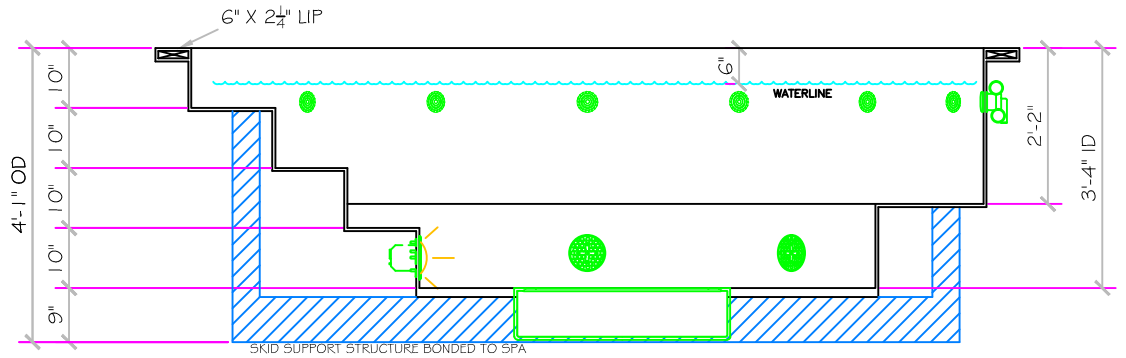
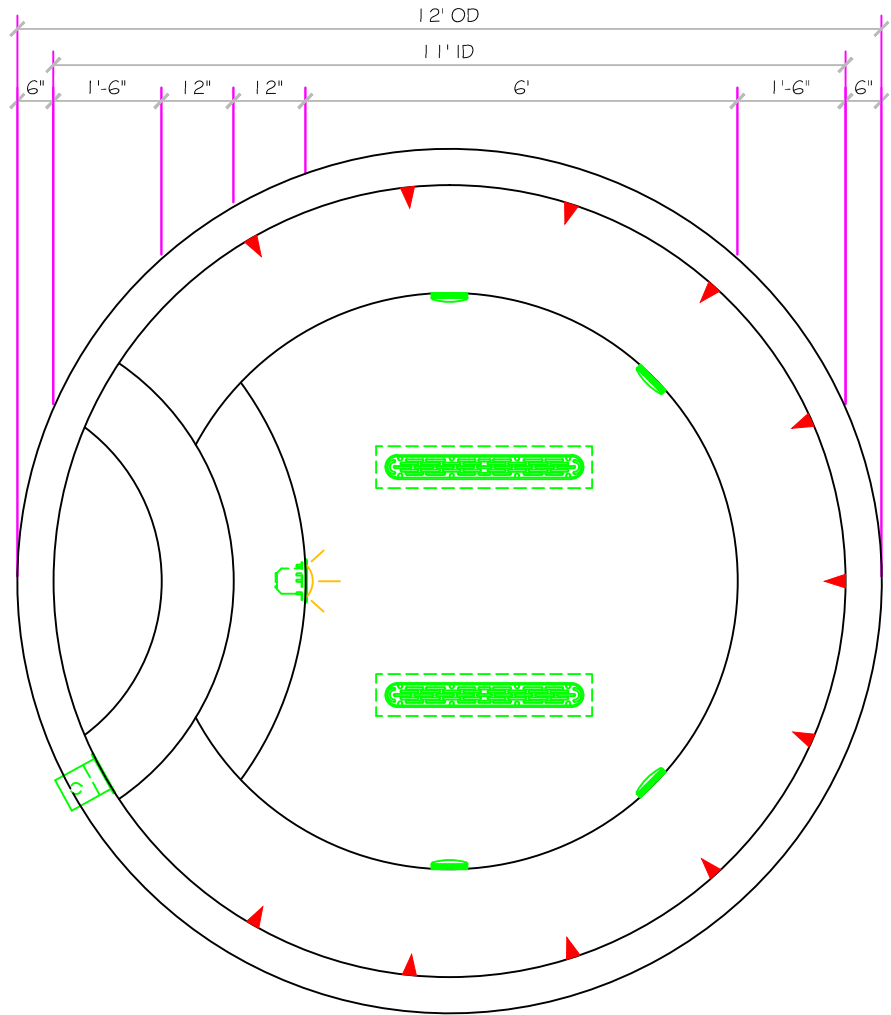


11' ROUND

ALL TILED SPA - Fits 11-12 Adults

| SPECIFICATIONS | |
|-----------------------------|--------------|
| SHELL WEIGHT: | 3000 LBS. |
| WATER WEIGHT: | 12267 LBS. |
| TOTAL SHELL & WATER WEIGHT: | 15267 LBS. |
| WATER VOLUME: | 249 Cu.Ft. |
| MAX WATER GAL: | 1863 GAL. |
| SURFACE AREA: | 95.0 SQ. FT. |
| IAPMO#: | 1138 |
| FDA#: | 2030305 |

| | |
|--|--|
| SKID SUPPORT STRUCTURE* BONDED TO SPA | |
| | |
| *SKIDS SUPPLIED BY NESPA | |
| LIGHT NICHE | |
| | SPA BRIGHT, 120 V, 100 WATT, 50' CORD, U.L. APPROVED |
| MAIN DRAIN | |
| | AquaStar 32CDFLR, 32" Channel Drain, Approved Max Flow Rate: Floor = 236 GPM @ 3.4 fps Wall = 136 GPM @ 1.9 fps V.G.B Approved Safety Drain |
| SIDEWALL SUCTION | |
| | 6" Round Hockey Puck Aquapro 6HPHxxx Sumplex Suction Outlet Floor/Wall 224 GPM @ 6.3fps Complies w/ ANSI Code ASME A112.19.8-2007 & VGB 2008 |
| SKIMMER | |
| | FRONT ACCESS SKIMMER, NSF APPROVED |
| JET | |
| | HYDRO INLETS 1-1/2" WATER - 1-1/2" AIR HYDROAIR #10-5100 COMPLIES W/ ANSI CODE ASME A112.19.8-07 UL APPROVED |
| RETURN | |
| | INLET FITTINGS 1-1/2" WALL TYPE W/ EYEBALL HYDROAIR #10-3500 COMPLIES W/ ANSI CODE ASME A112.19.8-07 UL APPROVED |
| FILL | |
| | INLET FITTINGS 1-1/2" WALL TYPE W/ EYEBALL HYDROAIR #10-3500 COMPLIES W/ ANSI CODE ASME A112.19.8-07 UL APPROVED |



All drawing dimensions supplied by NESPA ENTERPRISES INC. are for reference only. All CAD files were created using AutoCAD file (*.dwg.) and were provided as a service to our customers using AutoCAD. Errors sometimes occur during this process and with software incompatibility upon opening a file. NESPA ENTERPRISES INC. and/or any authorized distributor of our products will not be held responsible for problems arising from files which have been converted and does not warranty the documents against deficiencies or typographical errors of any kind. We recommend that all measurements are verified with actual physical product before any custom fabrication in the field occurs.