

SPECIFICATIONS	
DRY WEIGHT:	3100 LBS.
TOTAL WEIGHT:	19626 LBS.
WATER:	1982.2 GAL.
VOLUME:	265 Cu.Ft.
WEIGHT:	16526 LBS.
SURFACE AREA:	105.0 SQ. FT.
IAPMO#:	1138
FDA#:	2030305


# 14' LEGACY

ALL TILED SPA - Fits 10 Adults


**SKID SUPPORT STRUCTURE\* BONDED TO SPA**

\*SKIDS SUPPLIED BY NESPA

**LIGHT NICHE**


 SPA BRIGHT, 120 V, 100 WATT, 50' GORD, U.L. APPROVED

**MAIN DRAIN**




AquaStar 32CDFLFR, 32" Channel Drain, Approved Max Flow Rate: Floor = 236 GPM @ 3.4 fps Wall = 136 GPM @ 1.9 fps V.G.B Approved Safety Drain

**SIDEWALL SUCTION**




AquaStar 8AV, 8" Dia Frame, Approved Max Flow Rate: Floor = 83 GPM @ 3.2 fps Wall = 70 GPM @ 2.6 fps 8.8 Sq In - Open Area V.G.B Approved Safety Drain

**EQUALIZER**




5" HIGH FLOW SUCTIONS Waterway 640-357XV Super Hi-Flow Suction Assy, Max Flow 180 GPM Complies w/ ANSI Code ASME A112.19.8-2007 & VGB 2008

**SKIMMER**




HAYWARD SP-1084FVE SURFACE SKIMMER W/ EQUALIZER, NSF APPROVED

**JET**




HYDRO INLETS 1-1/2" WATER - 1-1/2" AIR HYDROAIR #10-5100 COMPLIES W/ ANSI CODE ASME A112.19.8-07 U.L. APPROVED

**RETURN**

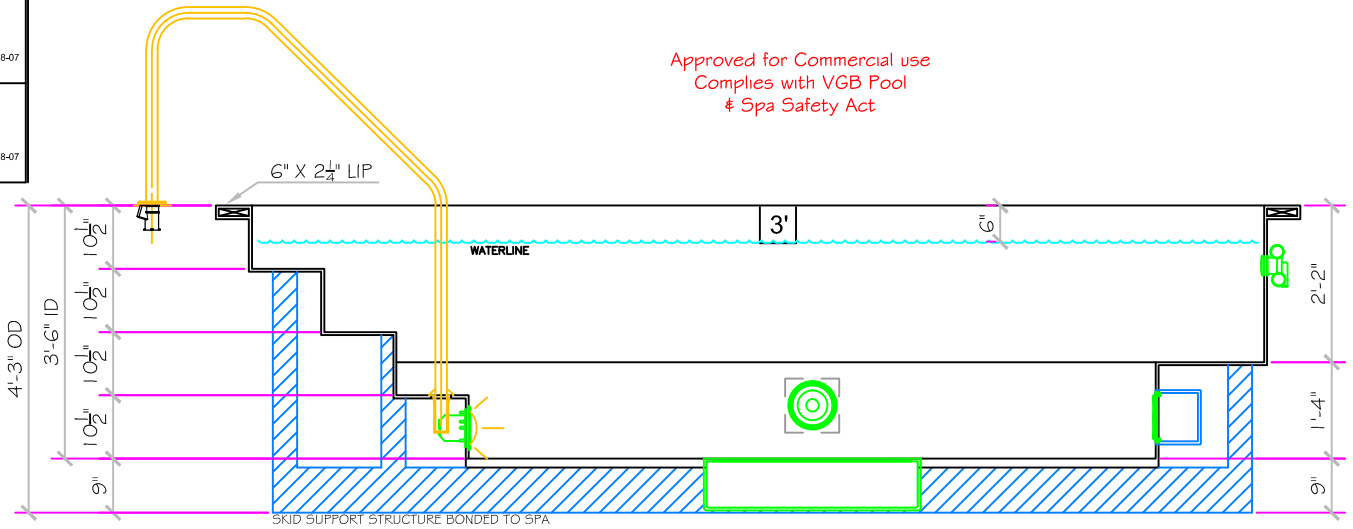
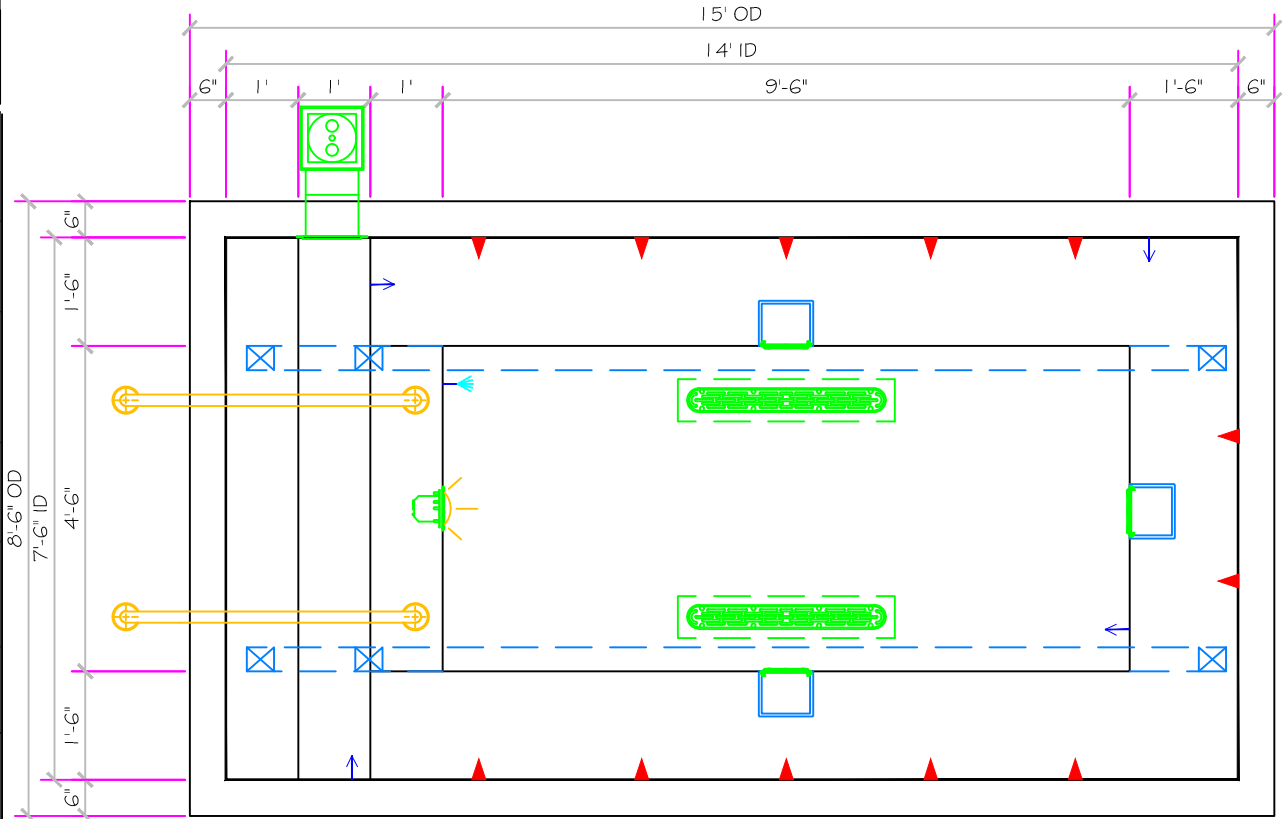


INLET FITTINGS 1-1/2" WALL TYPE W/ EYEBALL HYDROAIR #10-3500 COMPLIES W/ ANSI CODE ASME A112.19.8-07 U.L. APPROVED

**FILL**



INLET FITTINGS 1-1/2" WALL TYPE W/ EYEBALL HYDROAIR #10-3500 COMPLIES W/ ANSI CODE ASME A112.19.8-07 U.L. APPROVED



Approved for Commercial use  
Complies with VGB Pool  
& Spa Safety Act