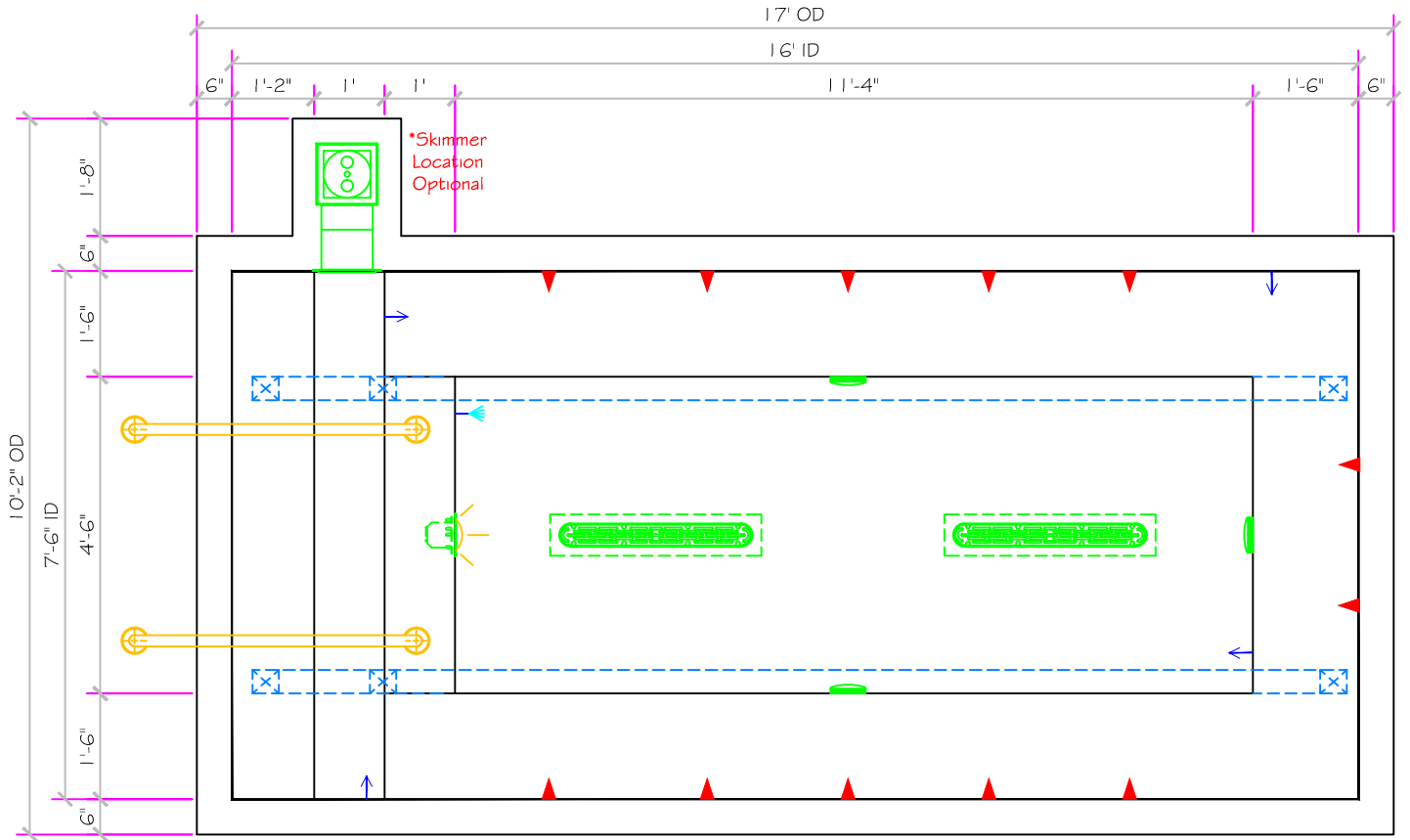
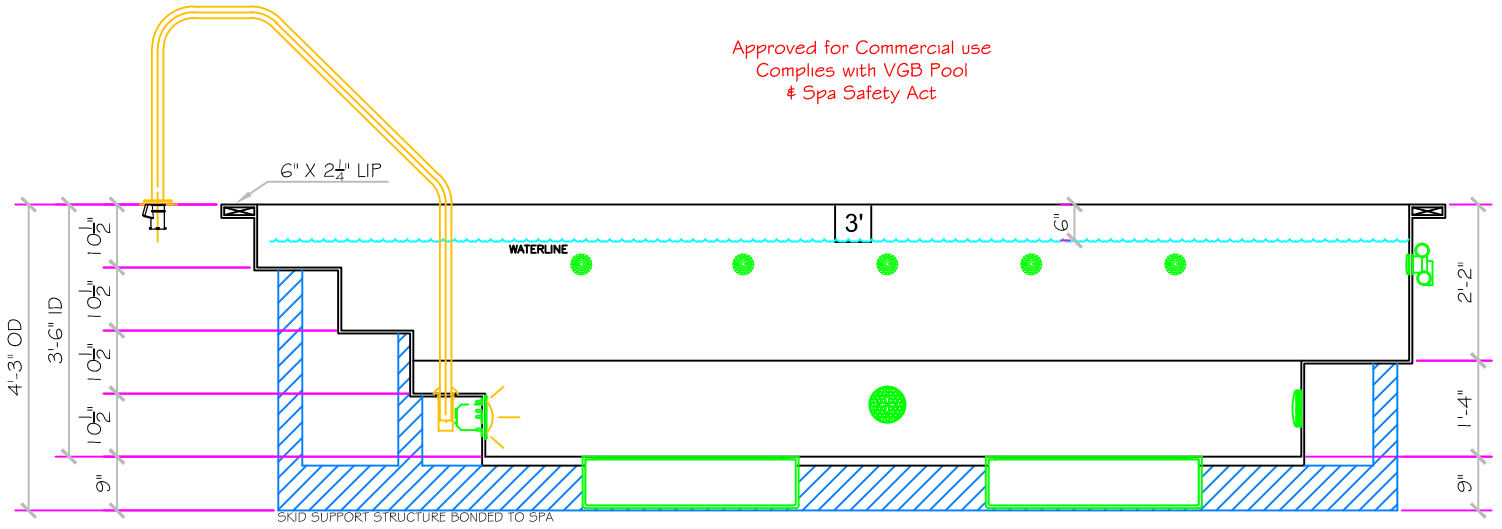


16' LEGACY

ALL TILED SPA - Fits 12 Adults



Approved for Commercial use
Complies with VGB Pool
& Spa Safety Act



SPECIFICATIONS	
SHELL WEIGHT	3390 LBS.
WATER WEIGHT	15366 LBS.
TOTAL SHELL & WATER WEIGHT	18715.7 LBS.
WATER VOLUME	308 Cu.Ft.
MAX WATER GAL.	2304 GAL.
SURFACE AREA	120.0 SQ. FT.
IAPMO#	1138
FDA#	2030305

SKID SUPPORT STRUCTURE* BONDED TO SPA

SKIDS SUPPLIED BY NESPA

LIGHT NICHE

SPI BRIGHT, 120 V, 100 WATT, 50' CORD, UL APPROVED

MAIN DRAIN

AquaStar 32CDFLFR, 32" Channel Drain, Approved Max Flow Rate: Floor = 236 GPM @ 3.4 f.p.s. W.B. = 135 GPM @ 3.0 f.p.s. V.G.B. Approved Safety Drain

SIDEWALL SUCTION

6" Round Hocking Pumps
Aquasun GPH4000
Summers Suction Outlet
FloorMat 226 GPM @ 6.3 f.p.s.
Complies w/ ANSI Code
ASME A112.19.8-2007 & VGB 2008

SKIMMER

HAYWARD SP-1084FVE
SURFACE SKIMMER
W/ EQUALIZER,
NSF APPROVED

JET

HYDRO INLETS
1" HP WATER + 1-1/2" AIR
HYDROAIR #10-510
COMPLIES W/ ANSI CODE ASME A112.19.8-07
UL APPROVED

RETURN

INLET FITTINGS
1-1/2" WALL TYPE W/ EYEBALL
HYDROAIR #10-350
COMPLIES W/ ANSI CODE ASME A112.19.8-07
UL APPROVED

FILL

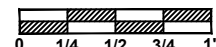
INLET FITTINGS
1-1/2" WALL TYPE W/ EYEBALL
HYDROAIR #10-350
COMPLIES W/ ANSI CODE ASME A112.19.8-07
UL APPROVED

All drawing dimensions supplied by **NESPA ENTERPRISES INC.** are for reference only. All CAD files were created using AutoCAD file (*.dwg.) and were provided as a service to our customers using AutoCAD. Errors sometimes occur during this process and with software incompatibility upon opening a file. **NESPA ENTERPRISES INC.** and/or any authorized distributor of our products will not be held responsible for problems arising from files which have been converted and does not warranty the documents against deficiencies or typographical errors of any kind. We recommend that all measurements are verified with actual physical product before any custom fabrication in the field occurs.

NESPA ENTERPRISES INC.

2800 Richter Ave. Suite C Oroville, CA 95966
Office: (530) 534-9910 Fax: (530) 534-9915
E-Mail: jim@tiledspas.com Web Site: www.tiledspas.com

SCALE
3/8" = 1"



DWG TYPE

SD

DWG NAME

COMMERCIAL MODELS 2012

DATE

10/3/2012

SHEET

PAGE 1 OF 1