

16' LEGACY

ALL TILED SPA - Fits 12 Adults

SPECIFICATIONS	
DRY WEIGHT:	3350 LBS.
TOTAL WEIGHT:	22557 LBS.
WATER:	2304 GAL.
VOLUME:	308 Cu.Ft.
WEIGHT:	19207 LBS.
SURFACE AREA:	120 SQ. FT.
IAPMO#:	1138
FDA#:	2030305

SKID SUPPORT STRUCTURE* BONDED TO SPA

SKIDS SUPPLIED BY NESPA

LIGHT NICHE

SPA BROW, 120 V, 100 WATT, 5' CORD, UL APPROVED

MAIN DRAIN

AquaStar 32CDPLFR, 32" Chained Drain, Approved Max Flow Rate: Floor = 236 GPM @ 3.4 fpa, Wall = 136 GPM @ 1.9 fpa, V.G.B Approved Safety Drain

SIDEWALL SUCTION

AquaStar 8AV, 8" Dia Frame, Approved Max Flow Rate: Floor = 68 GPM @ 3.2 fpa, Wall = 70 GPM @ 2.6 fpa, 8.8 Sq Ft - Open Area, V.G.B Approved Safety Drain

EQUALIZER

5" HIGH FLOW SUCTIONS Waterway 640-357X Super Hi-Flow Suction Assy. Max Flow: 160 GPM, Complies w/ ANSI Code ASME A112.19.5-2007 & VCB 2008

SKIMMER

HAYWARD SP-108MFVE SURFACE SKIMMER W/ EQUALIZER, NSF APPROVED

JET

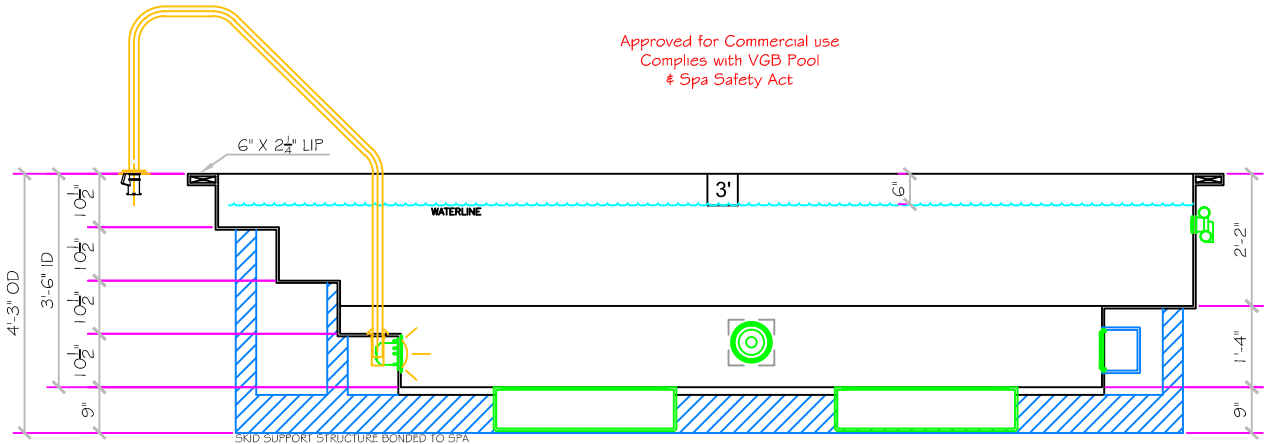
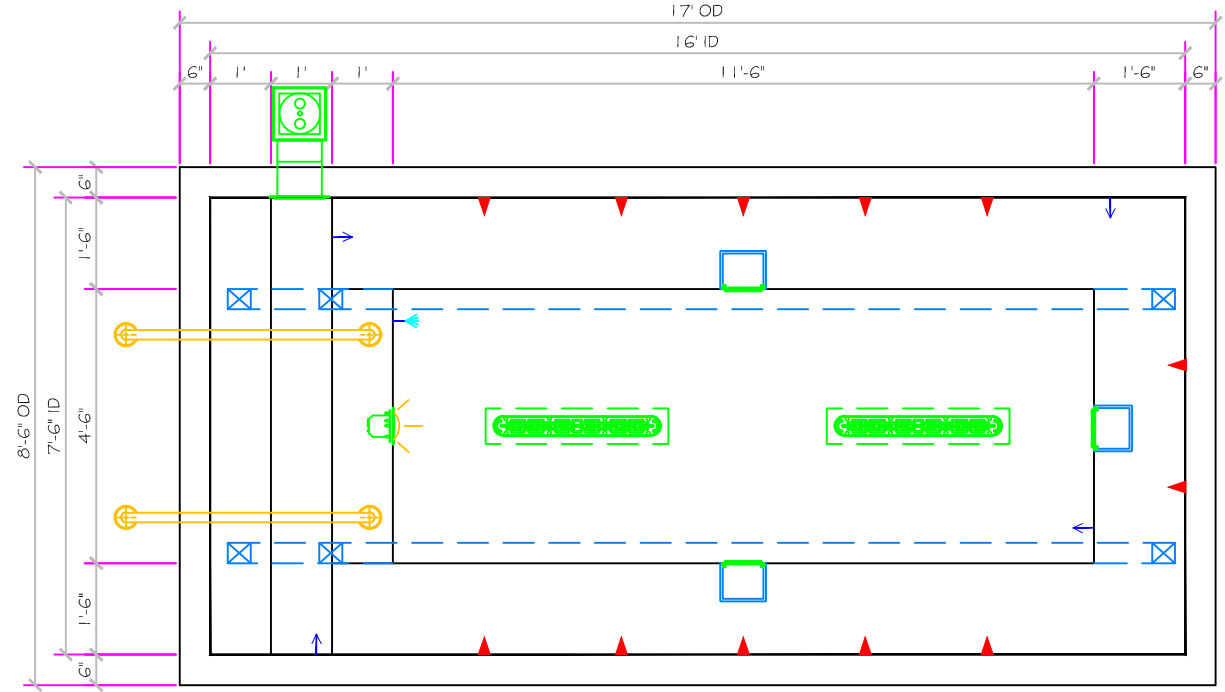
HYDRO INLETS 1-1/2" WATER - 1-1/2" AIR HYDRAIR #10310, COMPLIES W/ ANSI CODE ASME A112.19.8-07, UL APPROVED

RETURN

INLET FITTINGS 1-1/2" WALL TYPE W/ EYEBALL HYDRAIR #103500, COMPLIES W/ ANSI CODE ASME A112.19.8-07, UL APPROVED

FILL

INLET FITTINGS 1-1/2" WALL TYPE W/ EYEBALL HYDRAIR #103500, COMPLIES W/ ANSI CODE ASME A112.19.8-07, UL APPROVED



Approved for Commercial use
Complies with VGB Pool
& Spa Safety Act