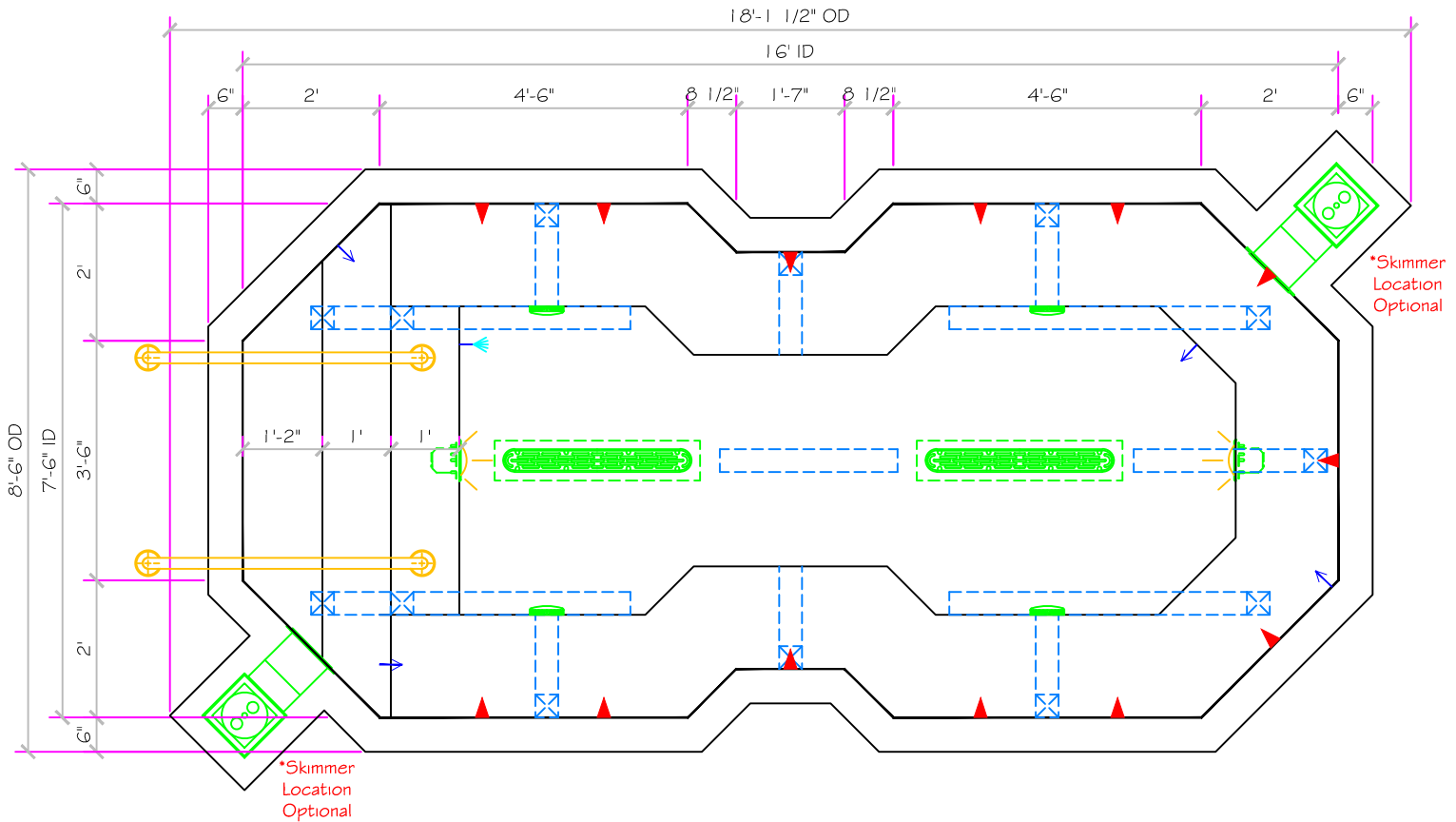
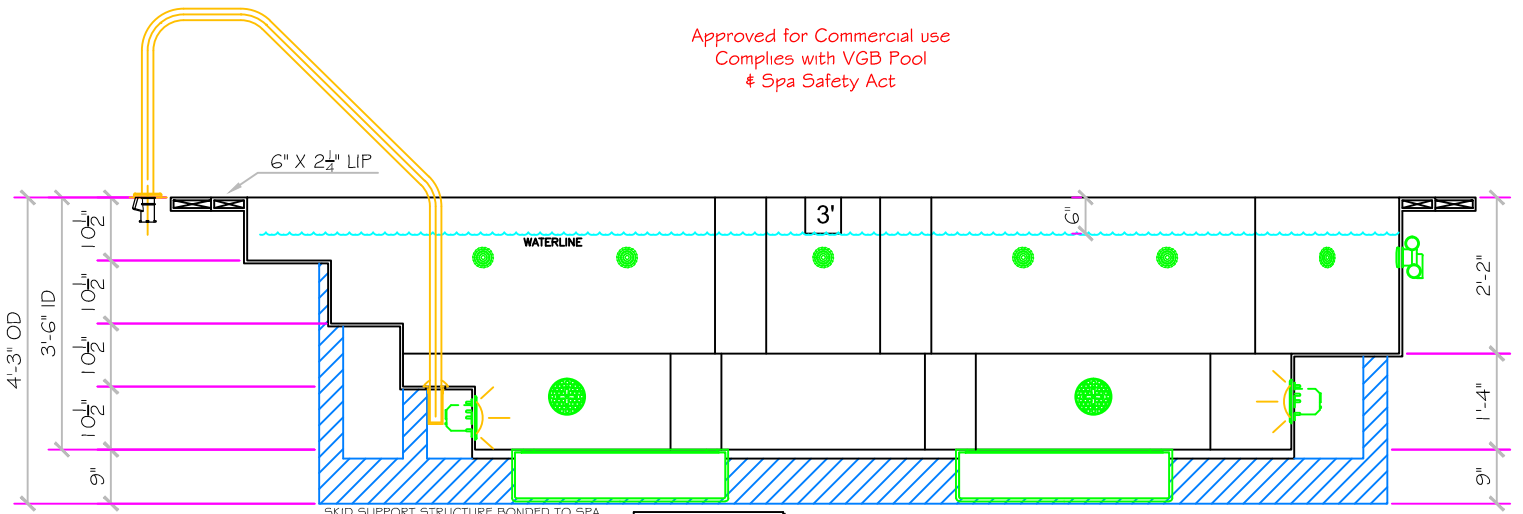


16' RENAISSANCE (SWIM SPA) ALL TILED SPA - Fits 10 Adults



Approved for Commercial use
Complies with VGB Pool
& Spa Safety Act



SPECIFICATIONS	
SHELL WEIGHT	3100 LBS.
WATER WEIGHT	14287 LBS.
TOTAL SHELL & WATER WEIGHT	17386.9 LBS.
WATER VOLUME	290 Cu.Ft
MAX WATER GAL.	2169 GAL.
SURFACE AREA	108.8 SQ. FT.
IAPMO#	1138
FDA#	2030305

SKID SUPPORT STRUCTURE BONDED TO SPA

WATER SUPPLY
1/2\"/>

SKIMMER
HAWAII SPA1084FVE SURFACE SKIMMER W/ FOAMER, NSF APPROVED

JET
PROP. WATER - 1/2\"/>

RETURN
INLET FITTINGS: PROP. BALL TYPE: 90° STEEL BALL, HUCKLAR #10350, COMPLIES W/ ANSI CODE ASME A112.18.4/7, UL APPROVED

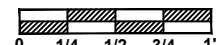
FILL
INLET FITTINGS: 1/2\"/>

All drawing dimensions supplied by **NESPA ENTERPRISES INC.** are for reference only. All CAD files were created using AutoCAD file (*.dwg.) and were provided as a service to our customers using AutoCAD. Errors sometimes occur during this process and with software incompatibility upon opening a file. **NESPA ENTERPRISES INC.** and/or any authorized distributor of our products will not be held responsible for problems arising from files which have been converted and does not warranty the documents against deficiencies or typographical errors of any kind. We recommend that all measurements are verified with actual physical product before any custom fabrication in the field occurs.

NESPA ENTERPRISES INC.

2800 Richter Ave. Suite C Oroville, CA 95966
Office: (530) 534-9910 Fax: (530) 534-9915
E-Mail: jim@tiledspas.com Web Site: www.tiledspas.com

SCALE
3/8" = 1"



DWG TYPE

SD

DWG NAME COMMERCIAL MODELS 2012

DATE 10/3/2012

SHEET PAGE 1 OF 1