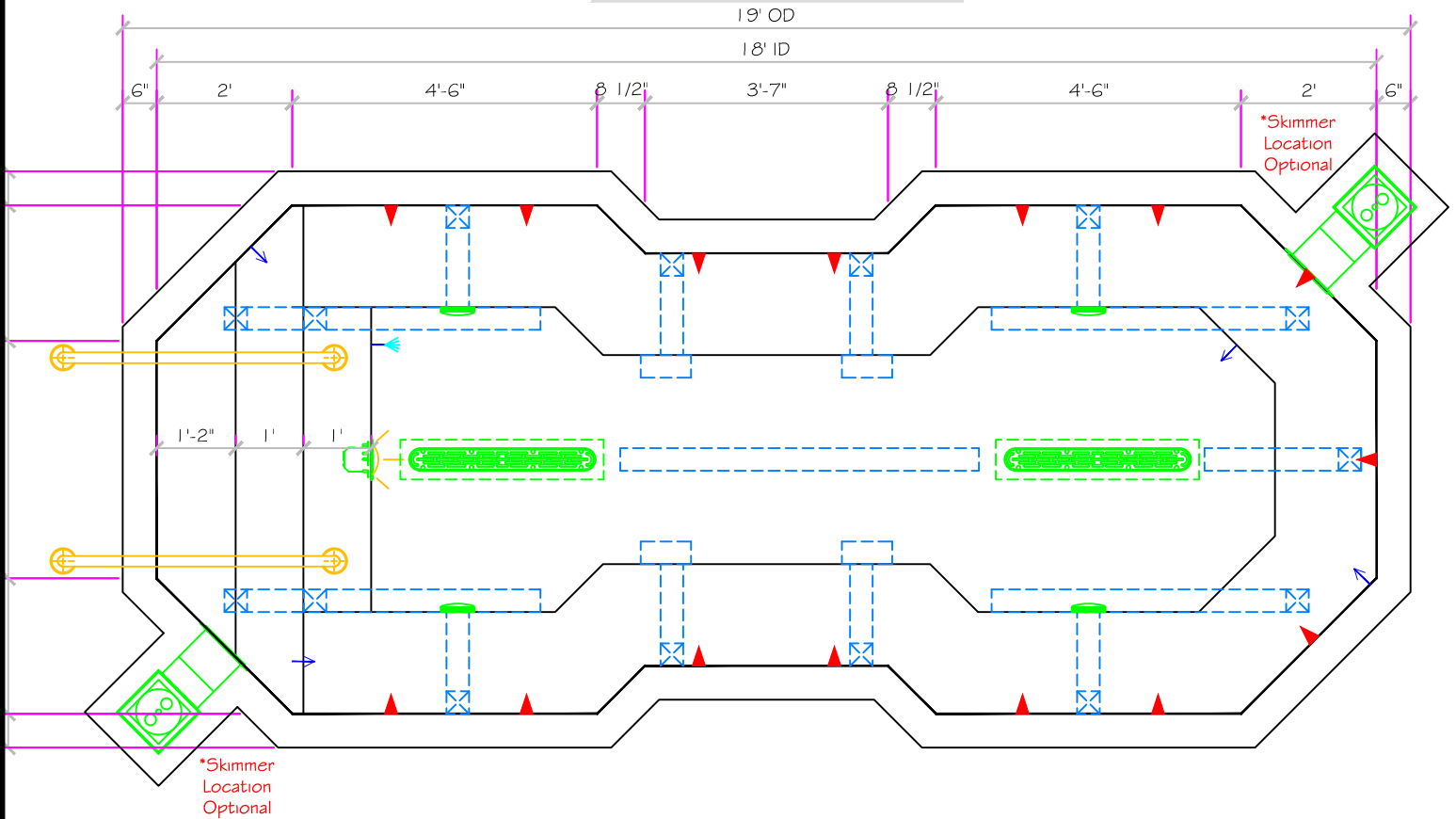
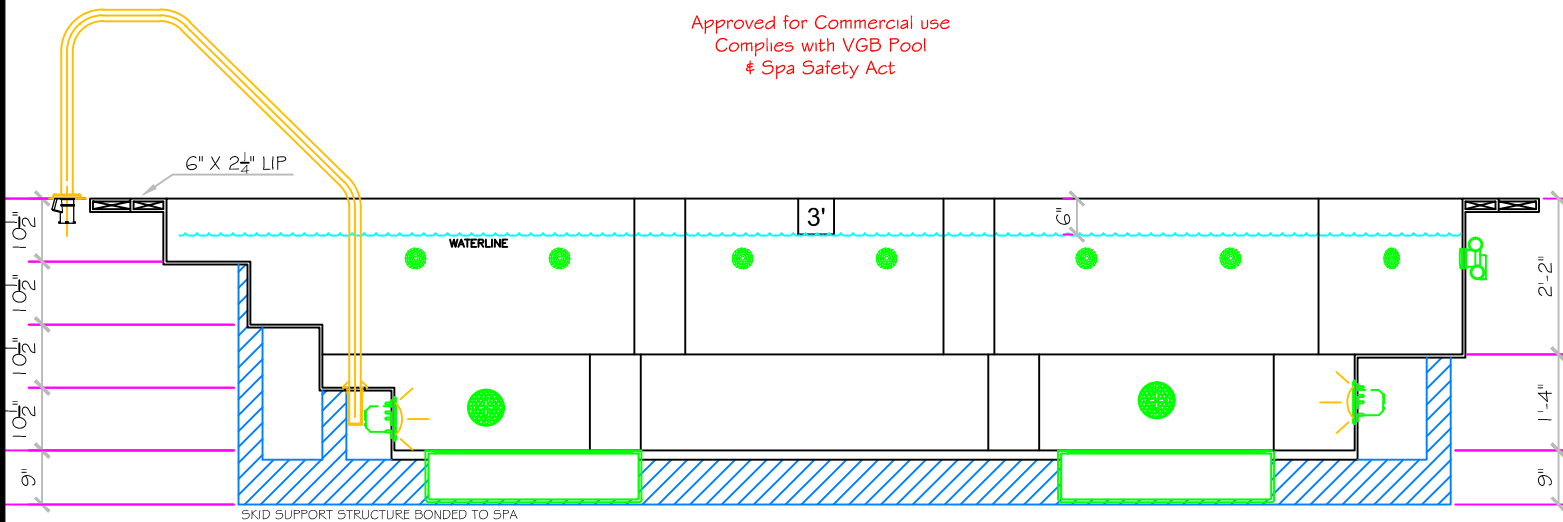


18' RENAISSANCE (SWIM SPA)

ALL TILED SPA - Fits 12 Adults



Approved for Commercial use
Complies with VGB Pool
& Spa Safety Act



SPECIFICATIONS	
SHELL WEIGHT:	3350 LBS.
WATER WEIGHT:	16214 LBS.
TOTAL SHELL & WATER WEIGHT:	19563.8 LBS.
WATER VOLUME:	325 Cu.Ft.
MAX WATER GAL:	2431 GAL.
SURFACE AREA:	120.9 SQ. FT.
IAPMO#:	1138
FDA#:	2030305

SKID SUPPORT STRUCTURE' BONDED TO SPA

*SKIDS SUPPLIED BY NESPA

LIGHT NICHE

Spa Bright, 120 V, 100 WATT, SP CORN, UL APPROVED

MAIN DRAIN

AlcaStar 32CDLRF, 3/2" Chained Drain, Approved Max Flow Rate: Floor = 228 GPM @ 3.4 lbs. Wall = 136 GPM @ 1.8 lbs VGB Approved Safety Drain

SIDEWALL SUCTION

6" Round Hockey Puck Aquaprop GPHProtec Sumpless Suction Outlet Floor/Wall 224 GPM @ 6.3lbs Complies w/ ANSI Code ASME A112.19.8-2007 & VGB 2008

SKIMMER

HAYWARD SP-1084FVE SURFACE SKIMMER W/ EQUALIZER NSF APPROVED

JET

HYDRO INLETS
1-1/2" WATER = 1-1/2" AIR
HYDROJET #154100
COMPLIES W/ ANSI CODE ASME A112.19.8-2007 UL APPROVED

RETURN

INLET FITTINGS
1-1/2" WALL TYPE W/ EYEBALL
HYDROJET #152000
COMPLIES W/ ANSI CODE ASME A112.19.8-2007 UL APPROVED

FILL

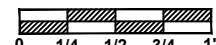
INLET FITTINGS
1-1/2" WALL TYPE W/ EYEBALL
HYDROJET #152000
COMPLIES W/ ANSI CODE ASME A112.19.8-2007 UL APPROVED

All drawing dimensions supplied by **NESPA ENTERPRISES INC.** are for reference only. All CAD files were created using AutoCAD file (*.dwg) and were provided as a service to our customers using AutoCAD. Errors sometimes occur during this process and with software incompatibility upon opening a file. **NESPA ENTERPRISES INC.** and/or any authorized distributor of our products will not be held responsible for problems arising from files which have been converted and does not warrant the documents against deficiencies or typographical errors of any kind. We recommend that all measurements are verified with actual physical product before any custom fabrication in the field occurs.

NESPA ENTERPRISES INC.

2800 Richter Ave. Suite C Oroville, CA 95966
Office: (530) 534-9910 Fax: (530) 534-9915
E-Mail: jim@tiledspas.com Web Site: www.tiledspas.com

SCALE
3/8" = 1"



DWG TYPE

SD

DWG NAME

COMMERCIAL MODELS 2012

DATE

10/3/2012

SHEET

PAGE 1 OF 1