

**NESPA**  
TILED SPAS

# **Production Booklet**

**for**

**217 E. 8th St. SPA**

2800 Richter Ave. Suite C, Oroville, CA 95965 • **voice:** (530)534-9910  
**fax:** (530)534-9915 • **email:** sales@tiledspas.com • **website:** www.tiledspas.com



## RECOMMENDED MAINTENANCE

### *Please Note:*

These are only recommended guidelines to care for a Nespa all tiled spa. Local codes may require additional procedures, therefore consult with a pool professional that is LA county Health Department certified for more information on local codes and requirements.

### ***SPA SURFACE***

Your spa tile is acid resistant and frost-proof. The Tile does not absorb germs or algae. Tile does not stain and is very easy to clean. Color does not fade or lose its luster. All grouts are epoxy based and are extremely durable. To remove scum line use soft nylon brush and small amounts of biodegradable soaps. Do not use abrasive brushes or chemicals.

### **MAINTENANCE**

#### **A. CHEMICALS:**

- 1) It is important to maintain a chlorine residual of 2 PPM in the spa. That residual can be provided by chlorine or bromine.
- 2) It is recommended to use Bromine or dichlor (granular) forms of chlorine. If bromine Tabs are used we suggest floating or inline dispenser.
- 3) Never use acid to lower Ph in the tile spa.
- 4) Never use trichlor chlorine (1" or 3") tablets in the Nespa spas.
- 5) Never place tablets in skimmer basket.

#### **B. DRAINING THE SPA:**

- 1) It is recommended to drain the spa at least once every 2 months depending on bath load and water clarity.
- 2) The spa should be drained through valve exiting re-circulation pump in the spa equipment room or sump pump.
- 3) Note: Use caution to drain spa in the winter months or rainy season when water table is at its highest. It is possible for the spa to float due to hydraulic pressure from surrounding water table. We advise that you consult with your local spa specialist prior to draining the spa.

#### **C. SPA EQUIPMENT:**

- 1) Clean filter cartridge at least once every month, or when needed; i.e., if water clarity does not improve after several days.
- 2) Keep area free and clear from leaves and debris build-up.
- 3) Keep area free and clear from flooding.

#### **D. SPA LIGHT:**

- 1) Spa light has to be on GFCI circuit. It is controlled at spa side with ON/OFF.

#### **E. TILE SERVICING:**

- 1) Contact manufacture when servicing tile or grout. @ (530) 534-9910

SPECIFICATIONS	
SHELL WEIGHT:	2500 LBS.
WATER WEIGHT:	8980 LBS.
TOTAL SHELL & WATER WEIGHT:	11479.9 LBS.
WATER VOLUME:	144 Cu.Ft.
WATER GALLONS:	1077 GAL.
SURFACE AREA:	64.0 SQ. FT.
ICC ES LISTED #:	PMG-1161

NESPA ENTERPRISES, Inc.



ICC ES Listed  
PMG-1161

WATERPROOF SKID SUPPORT  
STRUCTURE ATTACHED TO  
SPA AT NESPA FACTORY



\*SKIDS SUPPLIED  
BY NESPA

#### LIGHT NICHE



SPA BRIGHT, 120 V,  
100 WATT, 50' CORD,  
UL, APPROVED

#### SIDEWALL SUCTION



8" Round Hockey Puck  
AquaStar 6HPHxxx  
Simplex Suction Outlet  
Floor 177 GPM  
Wall 122 GPM  
Complies w/  
ANSI / ASME A112.19.8  
& NSF / ANSI 16-2011

#### EQUALIZER



8" Round Hockey Puck  
AquaStar 6HPHxxx  
Simplex Suction Outlet  
Floor 177 GPM  
Wall 122 GPM  
Complies w/  
ANSI / ASME A112.19.8  
& NSF / ANSI 16-2011

#### SKIMMER



HAYWARD SP-1084FVE  
SURFACE SKIMMER  
W/ EQUALIZERS,  
NSF / ANSI 50 - 2012

#### JET



HYDRO INLETS  
1-1/2" WATER - 1-1/2" AIR  
HYDROAIR #10-5100  
COMPLIES W/ ANSI CODE ASME A112.19.8-07  
UL APPROVED

#### RETURN

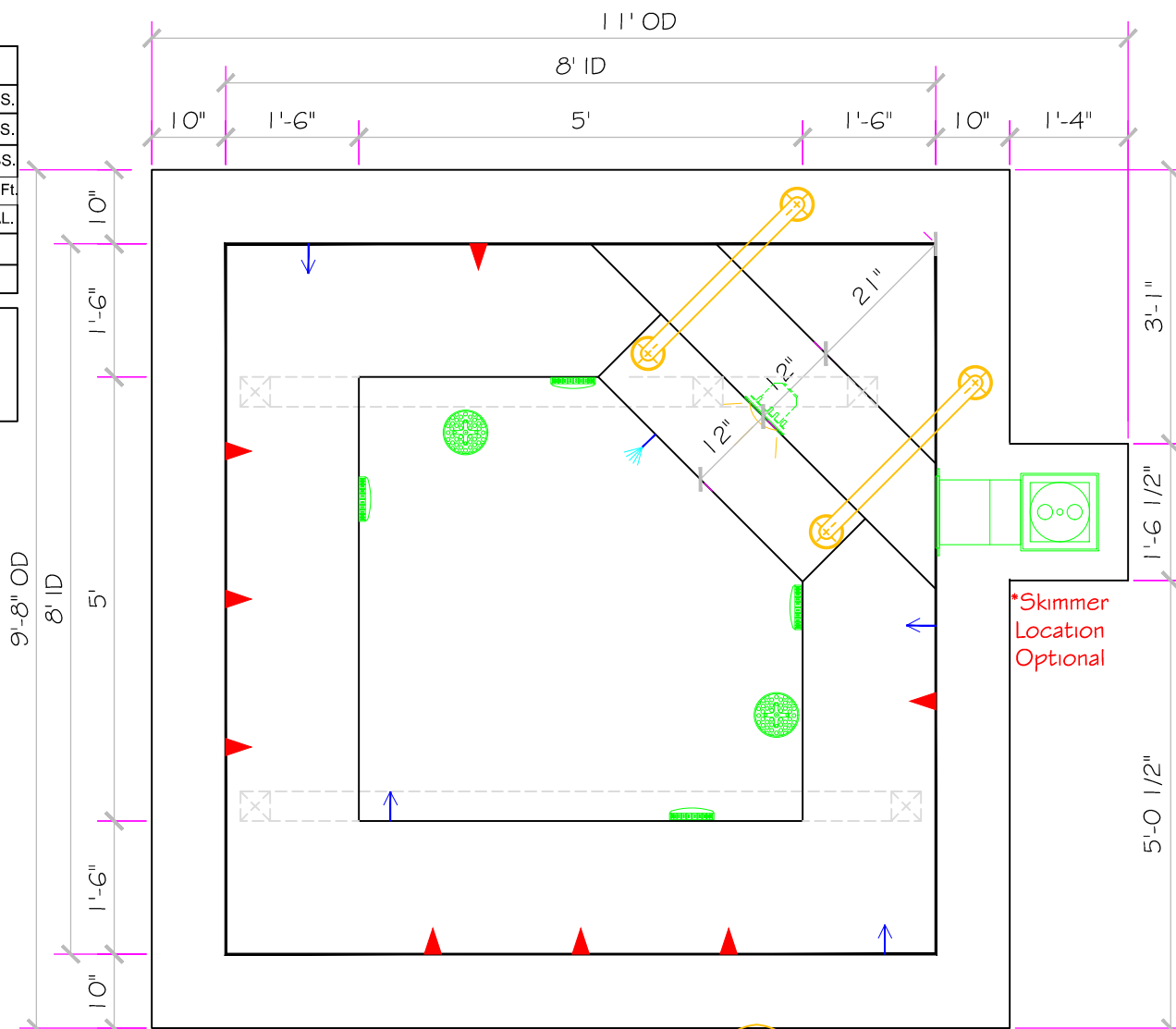


INLET FITTINGS  
1-1/2" WALL TYPE W/ EYEBALL  
HYDROAIR #10-3500  
COMPLIES W/ ANSI CODE ASME A112.19.8-07  
UL APPROVED

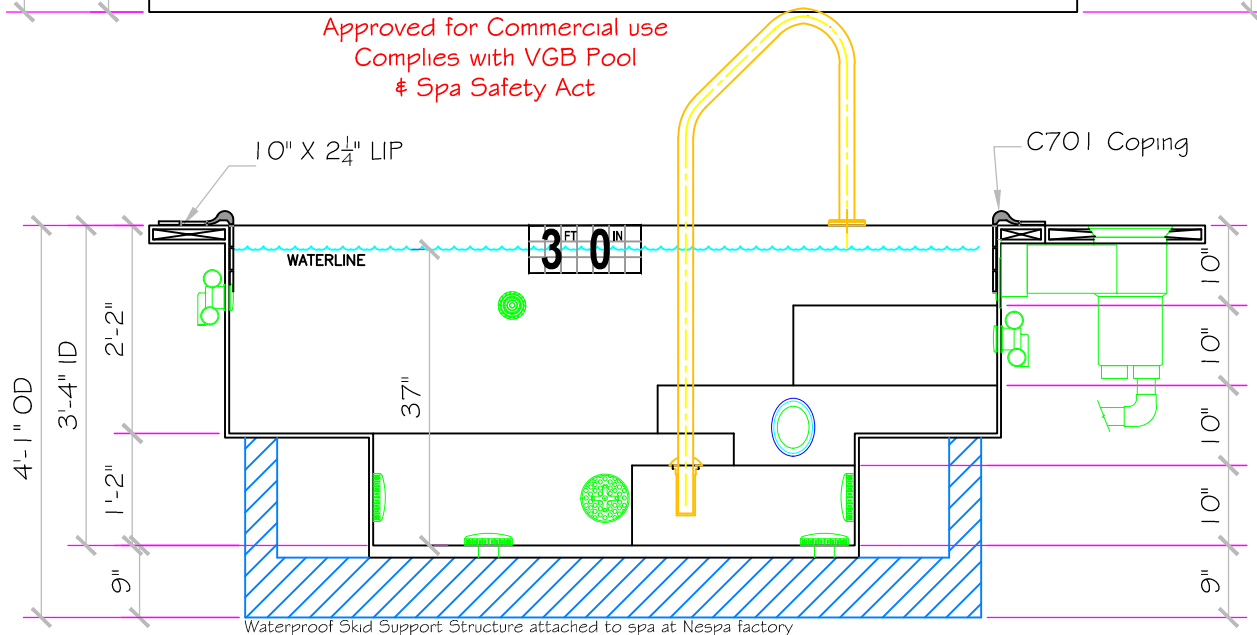
#### FILL



INLET FITTINGS  
1-1/2" WALL TYPE W/ EYEBALL  
HYDROAIR #10-3500  
COMPLIES W/ ANSI CODE ASME A112.19.8-07  
UL APPROVED



Approved for Commercial use  
Complies with VGB Pool  
& Spa Safety Act



All drawing dimensions supplied by **NESPA ENTERPRISES INC.** are for reference only. All CAD files were created using AutoCAD file (\*.dwg.) and were provided as a service to our customers using AutoCAD. Errors sometimes occur during this process and with software incompatibility upon opening a file. **NESPA ENTERPRISES INC.** and/or any authorized distributor of our products will not be held responsible for problems arising from files which have been converted and does not warrant the documents against deficiencies or typographical errors of any kind. We recommend that all measurements are verified with actual physical product before any custom fabrication in the field occurs.

## NESPA ENTERPRISES INC.

2800 Richter Ave. Suite C Oroville, CA 95966

Office: (530) 534-9910

Fax: (530) 534-9915

E-Mail: [jim@tiledspas.com](mailto:jim@tiledspas.com) Web Site: [www.tiledspas.com](http://www.tiledspas.com)



If printing as a PDF:

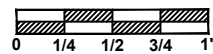
Page Scaling: ☐ None ☒ Scale to Fit

DWG NAME

217 E 8TH ST LA

SCALE

1/2" = 1'



ALL DIMENSIONS SUBJECT TO 1/4" TOLERANCES

**APPROVED**

DWG TYPE

SD

DATE  
1/8/2015

SHEET  
PAGE 1 OF 12

These drawings, concepts, and details contained herein are the original proprietary designs of **NESPA ENTERPRISES INC.**, developed over many years of experience in the industry and as such are protected by the copyright laws of the United States Government. Reproduction of any of the above without written permission to do so by **NESPA ENTERPRISES INC.**, is illegal.

- #1 - FIELD TILE: Dal Tile D152 MINT ICE
- #2 - WATERLINE (optional): Dal Tile D452 CYPRESS
- #3 - BENCH & STEP EDGES (optional): Dal Tile D452 CYPRESS
- #4 - TILED LIP (optional): Dal Tile D152 MINT ICE

Date: \_\_\_\_\_

Approval: \_\_\_\_\_

Dal Tile D152 MINT ICE

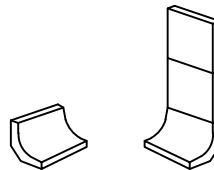
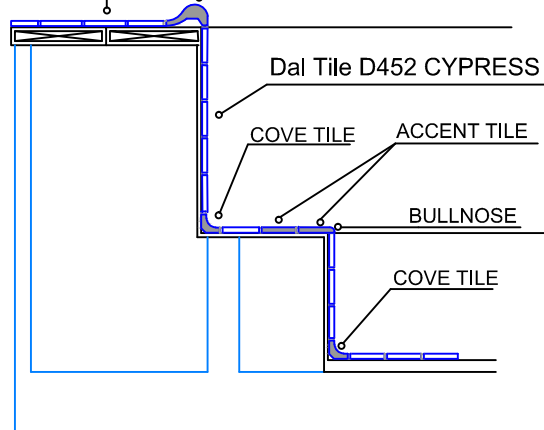


Dal Tile D452 CYPRESS

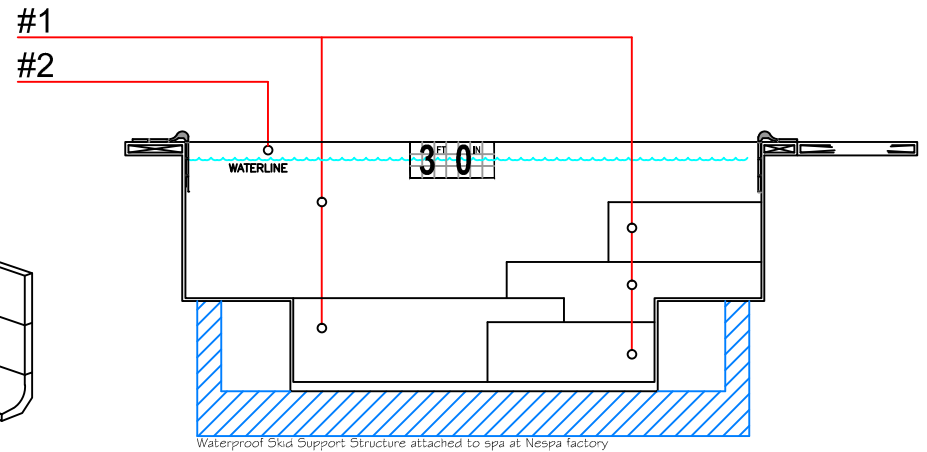
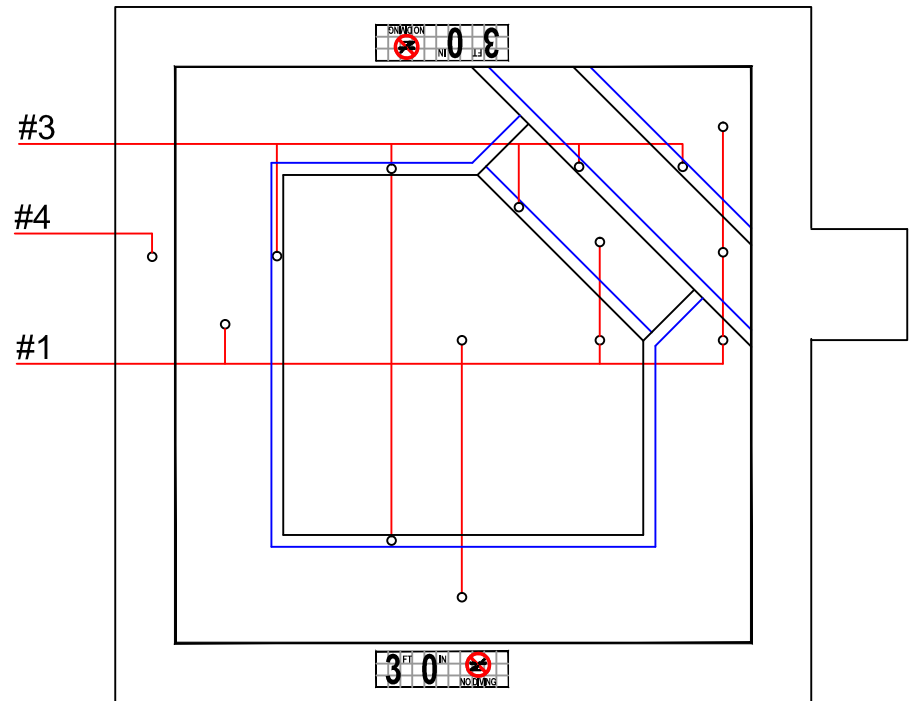


Dal Tile C701 - D152 MINT ICE

Dal Tile D152 MINT ICE



C-833  
COVE  
TILE



**APPROVED**

ALL DIMENSIONS SUBJECT TO 1/4" TOLERANCES

These drawings, concepts, and details contained herein are the original proprietary designs of **NESPA ENTERPRISES INC.**, developed over many years of experience in the industry and as such are protected by the copyright laws of the United States Government. Reproduction of any of the above without written permission to do so by **NESPA ENTERPRISES INC.**, is illegal.

**NESPA ENTERPRISES INC.**

2800 Richter Ave. Ste. C Oroville, CA 95966

Office: (530) 534-9910

Fax: (530) 534-9915

E-Mail: [jim@tiledspas.com](mailto:jim@tiledspas.com) Web Site: [www.tiledspas.com](http://www.tiledspas.com)



**If printing as a PDF:**

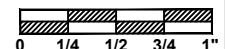
Page Scaling:

DWG NAME

217 E 8TH ST LA

SCALE

N/A



DATE

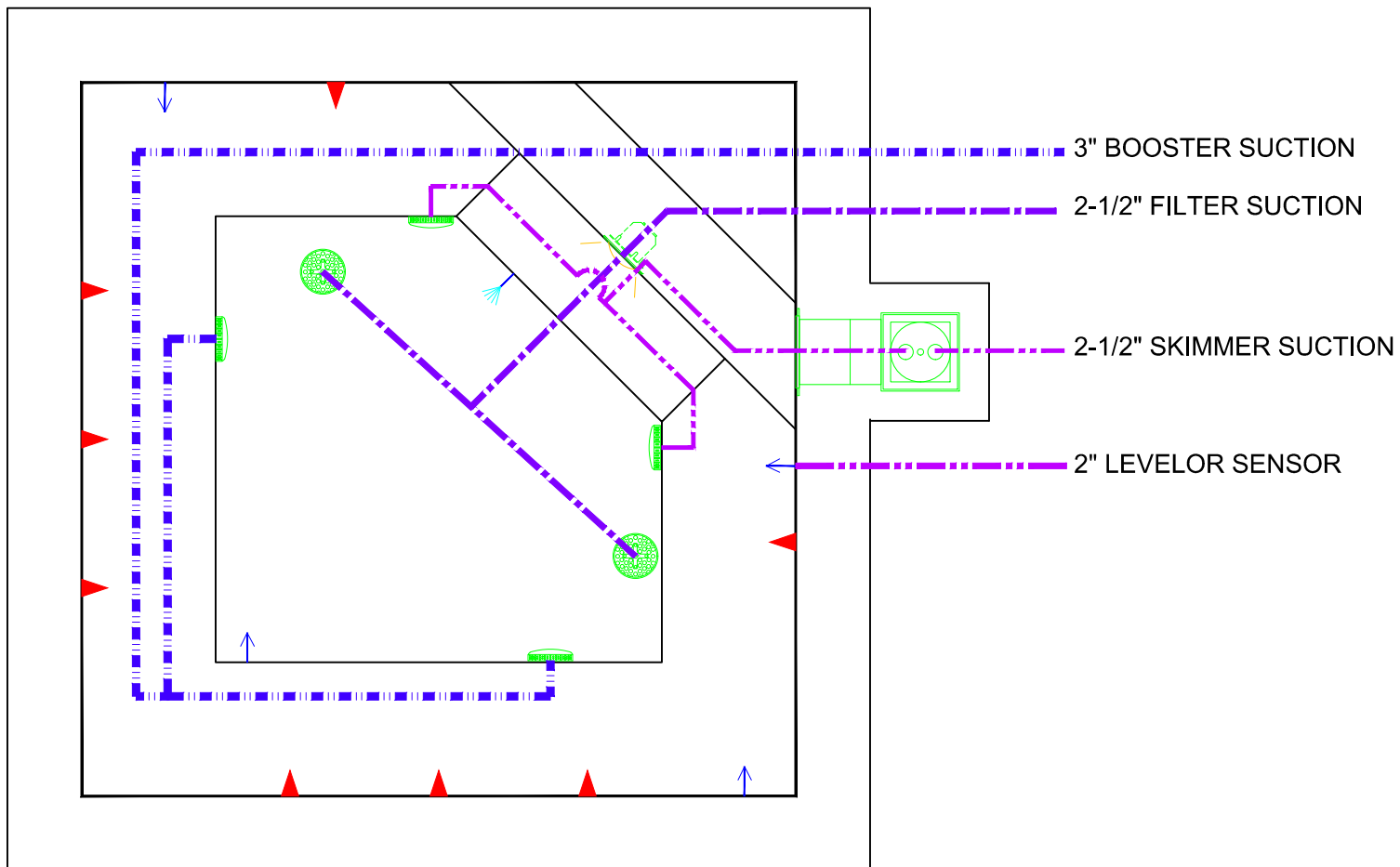
12/15/2014

DWG TYPE

Tile

SHEET

PAGE 2 OF 12



All drawing dimensions supplied by **NESPA ENTERPRISES INC.** are for reference only. All CAD files were created using AutoCAD file (\*.dwg.) and were provided as a service to our customers using AutoCAD. Errors sometimes occur during this process and with software incompatibility upon opening a file. **NESPA ENTERPRISES INC.** and/or any authorized distributor of our products will not be held responsible for problems arising from files which have been converted and does not warranty the documents against deficiencies or typographical errors of any kind. We recommend that all measurements are verified with actual physical product before any custom fabrication in the field occurs.

**APPROVED**

ALL DIMENSIONS SUBJECT TO 1/4" TOLERANCES

These drawings, concepts, and details contained herein are the original proprietary designs of **NESPA ENTERPRISES INC.**, developed over many years of experience in the industry and as such are protected by the copyright laws of the United States Government. Reproduction of any of the above without written permission to do so by **NESPA ENTERPRISES INC.**, is illegal.

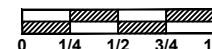
**NESPA ENTERPRISES INC.**  
 2800 Richter Ave. Ste. C Oroville, CA 95966  
 Office: (530) 534-9910 Fax: (530) 534-9915  
 E-Mail: [jim@tiledspas.com](mailto:jim@tiledspas.com) Web Site: [www.tiledspas.com](http://www.tiledspas.com)



**If printing as a PDF:**

Page Scaling:

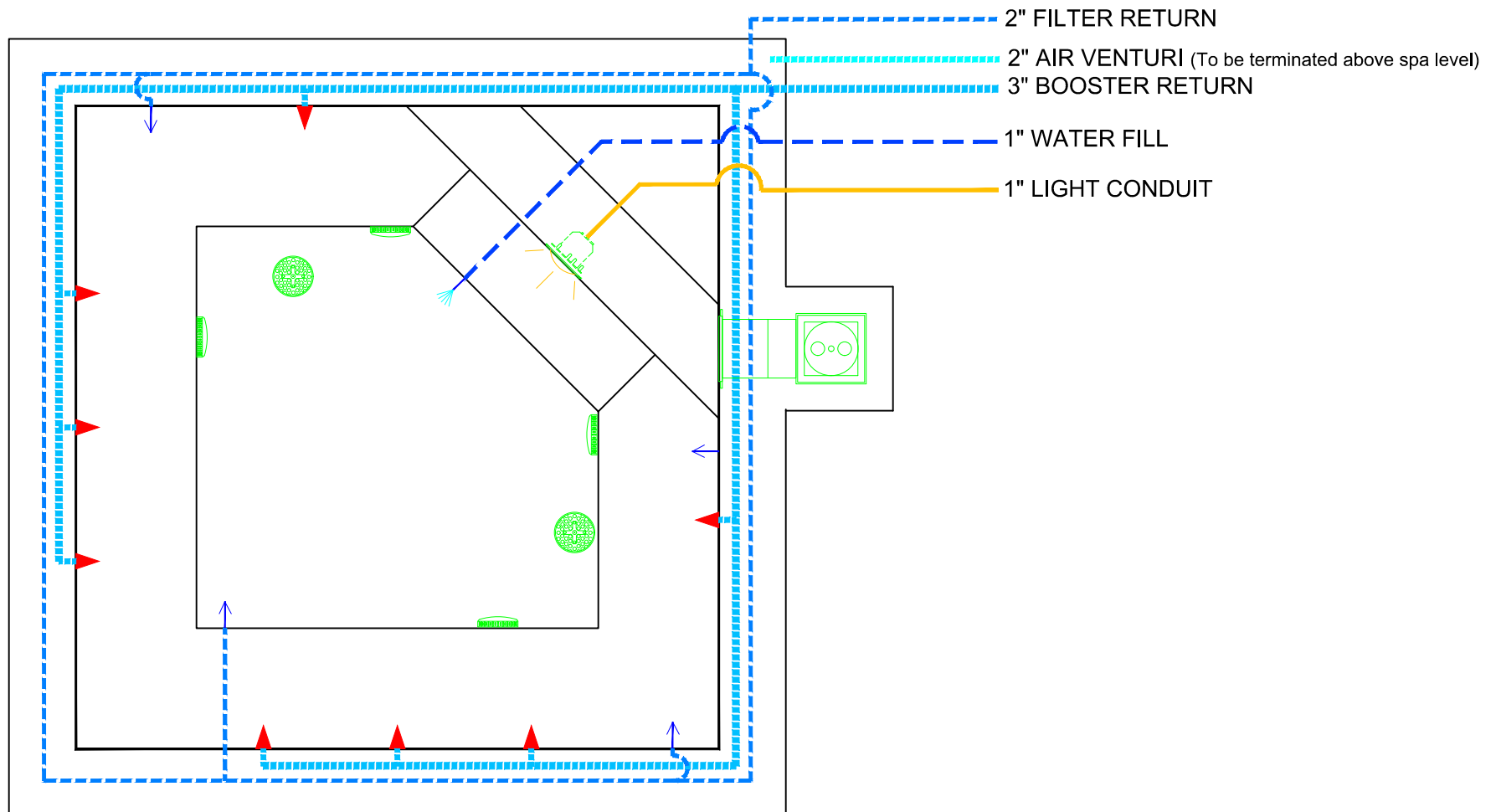
SCALE  
 1/2" = 1'



DWG NAME 217 E 8TH ST LA

DATE 12/15/2014

DWG TYPE Suction Plumbing  
 SHEET PAGE 3 OF 12



All drawing dimensions supplied by **NESPA ENTERPRISES INC.** are for reference only. All CAD files were created using AutoCAD file (\*.dwg.) and were provided as a service to our customers using AutoCAD. Errors sometimes occur during this process and with software incompatibility upon opening a file. **NESPA ENTERPRISES INC.** and/or any authorized distributor of our products will not be held responsible for problems arising from files which have been converted and does not warranty the documents against deficiencies or typographical errors of any kind. We recommend that all measurements are verified with actual physical product before any custom fabrication in the field occurs.

**APPROVED**

ALL DIMENSIONS SUBJECT TO 1/4" TOLERANCES

These drawings, concepts, and details contained herein are the original proprietary designs of **NESPA ENTERPRISES INC.**, developed over many years of experience in the industry and as such are protected by the copyright laws of the United States Government. Reproduction of any of the above without written permission to do so by **NESPA ENTERPRISES INC.**, is illegal.

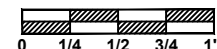
**NESPA ENTERPRISES INC.**  
 2800 Richter Ave. Ste. C Oroville, CA 95966  
 Office: (530) 534-9910 Fax: (530) 534-9915  
 E-Mail: [jim@tiledspas.com](mailto:jim@tiledspas.com) Web Site: [www.tiledspas.com](http://www.tiledspas.com)



**If printing as a PDF:**

Page Scaling:

SCALE  
 1/2" = 1'



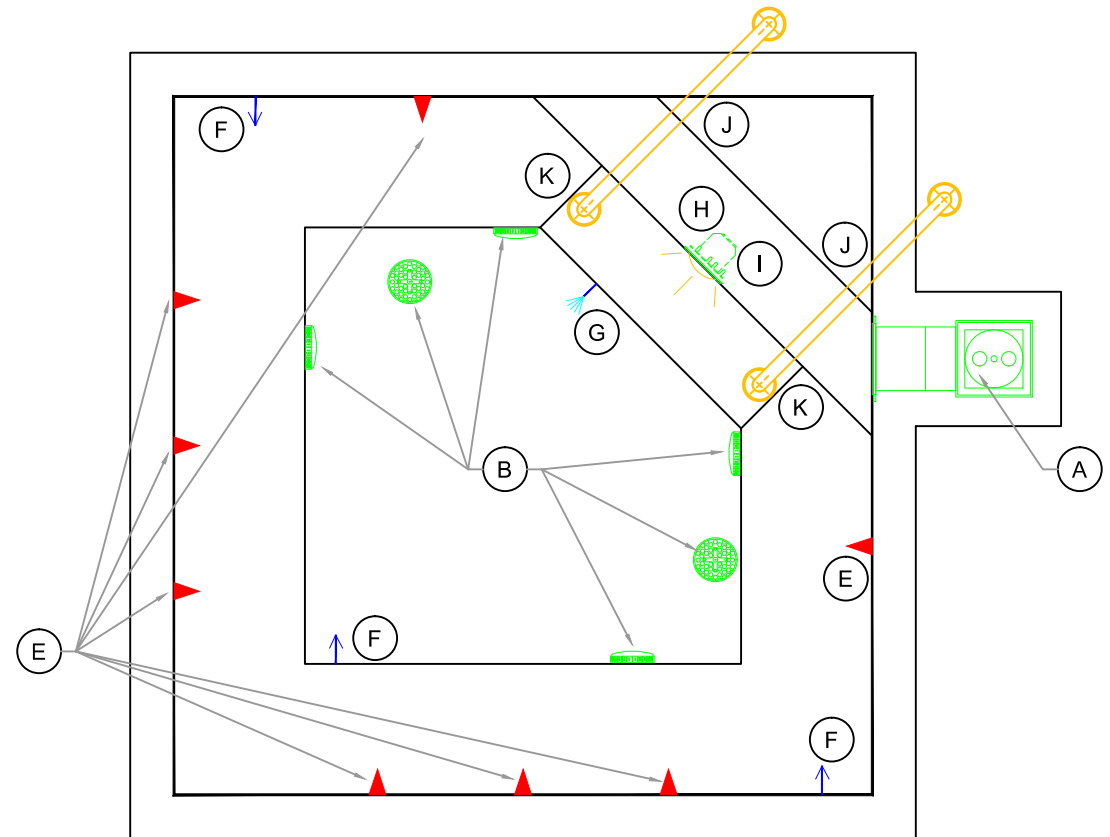
DWG NAME  
 217 E 8TH ST LA

DATE  
 12/15/2014

DWG TYPE  
 Return Plumbing  
 SHEET  
 PAGE 4 OF 12

## EQUIPMENT LIST

ITEM	DESCRIPTION	MANUFACTURER	CATALOG NO.	QTY.
A	SURFACE SKIMMER - AUTOMATIC W/ EQUALIZER, NSF APPROVED	HAYWARD	SP-1084FVE	1
B	6" Round Hockey Puck - Sumpluss Suction Outlet Floor 177 GPM - Wall 122 GPM Complies w/ ANSI / ASME A112.19.8 & NSF / ANSI 16-2011	AQUASTAR	6HPHAxxx	6
E	HYDRO JETS 1-1/2" WATER - 1-1/2" AIR COMPLIES W/ ANSI CODE ASME A112.19.8-07 UL APPROVED	HYDROAIR	10-5100	8
F	INLET FITTINGS 1-1/2" WALL TYPE W/ EYEBALL COMPLIES W/ ANSI CODE ASME A112.19.8-07 UL APPROVED	HYDROAIR	10-3500	4
G	WATER FILL 1-1/2" WALL TYPE W/ EYEBALL COMPLIES W/ ANSI CODE ASME A112.19.8-07 UL APPROVED	HYDROAIR	10-3500	1
H	UNDERWATER LIGHT, 120 VOLT, 100 WATT, w/ 50FT. of CORD, U.L. LISTED	PENTAIR	78106100	1
I	LIGHT NICHE - U.L. LISTED	PENTAIR	78242200	1
J	HAND RAIL, STAINLESS STEEL, 3' - 0" LENGTH,	CUSTOM	-	2
K	WEDGE ANCHORS, BRONZE	S.R. SMITH	EP-100A	2
N	Raypack Model 407, 399 BTU Low Nox - ASME rated natural gas	RAYPACK	407	1
O	CARTRIDGE FILTER 320 SQ. FT. CLEAN & CLEAR PLUS SERIES	PENTAIR	CCP-320	1
P	SELFPRIMING PUMP AND MOTOR, 60 GPM @ 60 FT. HEAD, 3/4 HP, 230 VOLT, 20 AMP, 1 PHASE, 2" DISCHARGE UNIT WITH PUMP STRAINER	PENTAIR	WFE-3	1
Q	SELFPRIMING PUMP AND MOTOR, 99 GPM @ 60 FT. HEAD, 1 1/2 HP, 230 VOLT, 20 AMP, 1 PHASE, 2" DISCHARGE UNIT WITH PUMP STRAINER	PENTAIR	WFE-6	1
U	WATER LEVEL CONTROL DEVICE	LEVELOR	K-1100	1
V	BROMINATOR, AUTOMATIC TYPE, OFF LINE	PENTAIR	RAINBOW 300	1
W	FLOWMETER - 2.5" PVC - 60 to 240-GPM Horizontal	BLUE WHITE	F-30250P	1
X	Pentair Compool LX 80 with Emergency Shut. Off, Spa Activation Button, (2) time clocks, & 15 min. or 30 min. Booster auto shut off.	PENTAIR	LX80	1



**APPROVED**

ALL DIMENSIONS SUBJECT TO 1/4" TOLERANCES

These drawings, concepts, and details contained herein are the original proprietary designs of **NESPA ENTERPRISES INC.**, developed over many years of experience in the industry and as such are protected by the copyright laws of the United States Government. Reproduction of any of the above without written permission to do so by **NESPA ENTERPRISES INC.**, is illegal.

**NESPA ENTERPRISES INC.**  
 2800 Richter Ave. Ste. C Oroville, CA 95966  
 Office: (530) 534-9910 Fax: (530) 534-9915  
 E-Mail: [jim@tiledspas.com](mailto:jim@tiledspas.com) Web Site: [www.tiledspas.com](http://www.tiledspas.com)



**If printing as a PDF:**

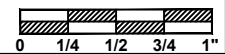
Page Scaling:

DWG NAME

217 E 8TH ST LA

SCALE

N/A



DATE

12/15/2014

DWG TYPE

Spa Equipment

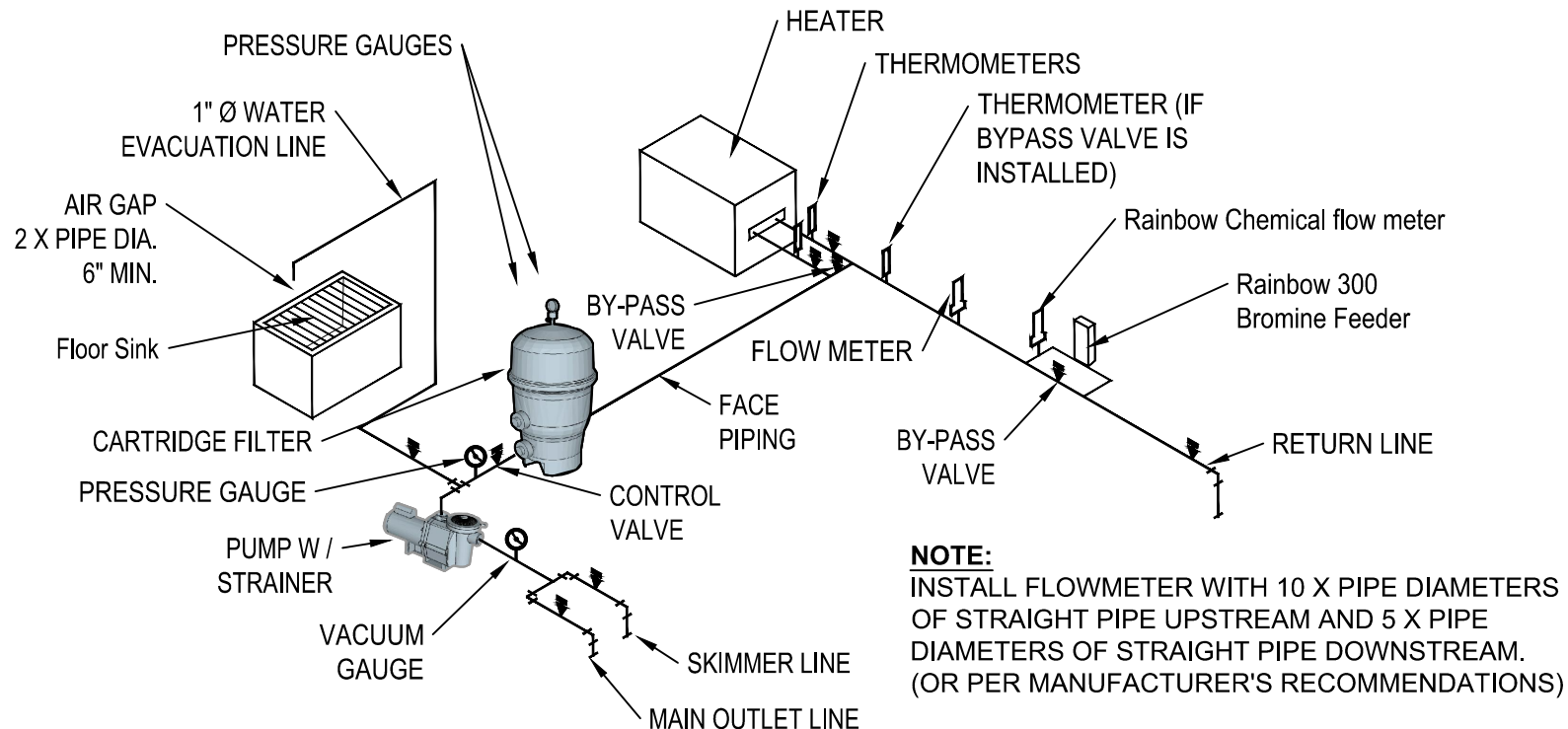
SHEET

PAGE 5 OF 12

**NOTE:**  
PROVIDE AIR RELIEF  
VALVE AT HIGH POINT  
OF SYSTEM.

**NOTE:**  
IF HEATER IS GREATER THAN 200,000  
BTU IT SHALL BE ASME CODE  
STAMPED & REGISTERED BY THE  
NATIONAL BOARD OF INSPECTORS.

**NOTE:**  
INTERLOCK CIRCULATION PUMP  
WITH ALL CHEMICAL FEEDERS  
AND HEATER IF FLOW SWITCH IS  
NOT PROVIDED ON HEATER.



**NOTE:**  
SIZE OF SUMP SHALL  
BE DETERMINED BY  
MECHANICAL ENGINEER.

**NOTE:**  
IDENTIFY ALL PLUMBING BY A  
COLOR CODE OR LABELS ON  
ALL PIPING & VALVES

**NOTE:**  
INSTALL FLOWMETER WITH 10 X PIPE DIAMETERS  
OF STRAIGHT PIPE UPSTREAM AND 5 X PIPE  
DIAMETERS OF STRAIGHT PIPE DOWNSTREAM.  
(OR PER MANUFACTURER'S RECOMMENDATIONS)

**NOTE:**  
THE SPA EQUIPMENT IS LOCATED  
BELOW WATER LEVEL - ADD  
ISOLATION VALVES ON EACH  
PIECE OF EQUIPMENT.

## SPA CIRCULATION EQUIPMENT SCHEMATIC

SCALE: NONE

**APPROVED**

ALL DIMENSIONS SUBJECT TO 1/4" TOLERANCES

These drawings, concepts, and details contained herein are the original proprietary designs of **NESPA ENTERPRISES INC.**, developed over many years of experience in the industry and as such are protected by the copyright laws of the United States Government. Reproduction of any of the above without written permission to do so by **NESPA ENTERPRISES INC.**, is illegal.

**NESPA ENTERPRISES INC.**  
2800 Richter Ave. Ste. C Oroville, CA 95966  
Office: (530) 534-9910 Fax: (530) 534-9915  
E-Mail: [jim@tiledspas.com](mailto:jim@tiledspas.com) Web Site: [www.tiledspas.com](http://www.tiledspas.com)



If printing as a PDF:

Page Scaling: None

SCALE  
N/A

DWG NAME  
217 E 8TH ST LA

DATE  
12/15/2014

DWG TYPE  
Equipment Schematic  
SHEET  
PAGE 6 OF 12

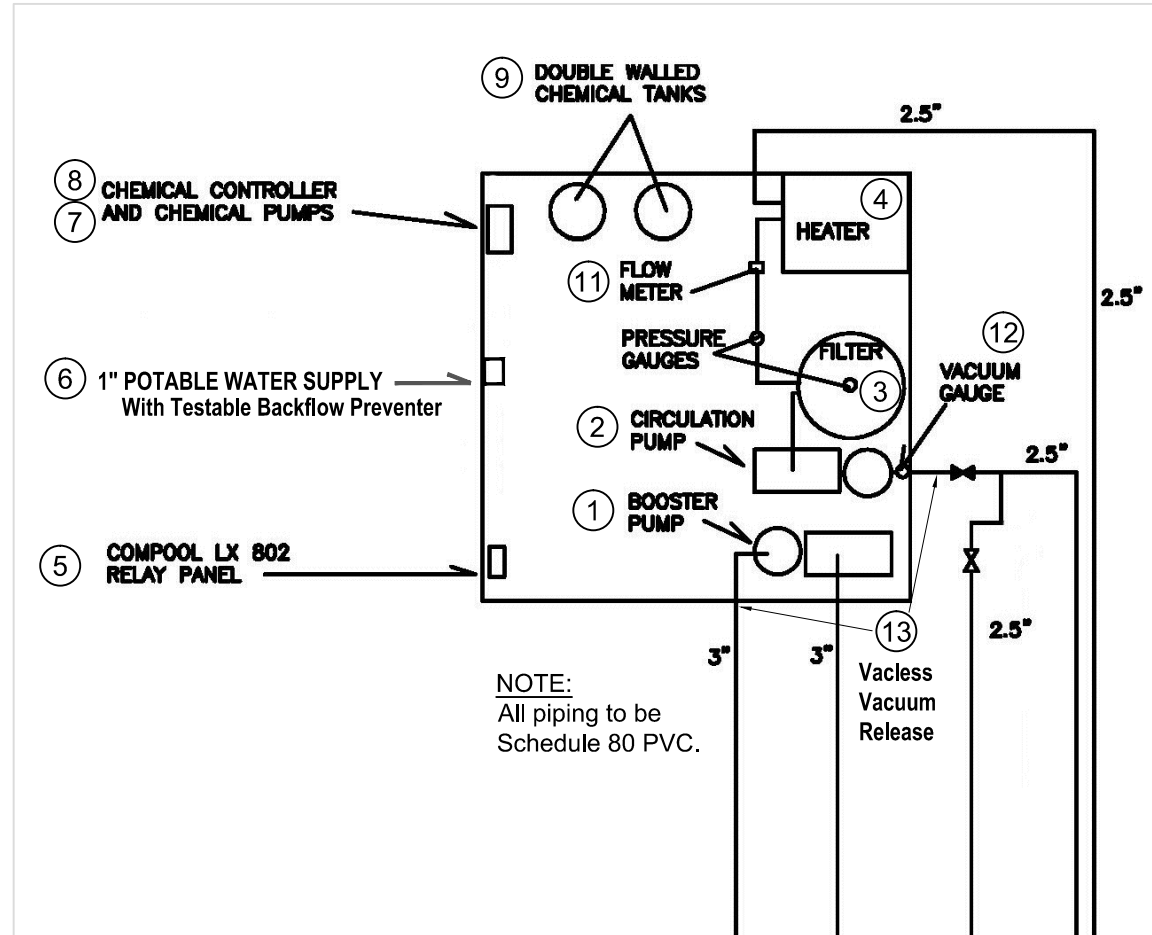


## SPA EQUIPMENT

1. BOOSTER PUMP- PENTAIR WHISPERFLOW - 2HP MODEL WFE-8X
2. CIRCULATION PUMP-PENTAIR WHISPERFLOW - 1HP MODEL WFE-4X
3. FILTER AND INFLUENT PRESSURE GAUGE- PENTAIR CLEAN AND CLEAR PLUS MODEL CCP-320
4. HEATER- RAYPAK NATURAL GAS MODEL C-R407A-EN-X-010230 LOW NOX ASME 399 BTU
5. CONTROL PANEL- PENTAIR COMPOOL MODEL LX 820, WITH EMERG. SHUT OFF
6. 1" POTABLE WATER SUPPLY WITH TESTABLE BACKFLOW PREVENTER
7. CHEMICAL PUMPS- STENNER MODEL 45M 1 3LBS. PER DAY
8. CHEMICAL CONTROL-CHEMTROL MODEL 255, PH AND PPM DISPLAY.
9. CHEMICAL CONTAINMENT TANKS- GEMINI MODEL 020 20GAL DOUBLEWALL
10. CHEMICAL TEST KIT- TAYLOR MODEL-K2000, DPD ,PH.
11. FLOWMETER- BLUE WHITE MODEL F-250
12. VACUUM GAUGE
13. ANTI ENTRAPMENT VACUUM RELEASE, VACLESS MODEL SVRS10ADJ

14. SIGNAGE COMPLIANT WITH COUNTY OF LOS ANGELES -DEPARTMENT OF PUBLIC HEALTH ENVIRONMENTAL HEALTH-RECREATIONAL WATERS PROGRAM SWIMMING POOL PLAN APPROVAL REQUIREMENTS.

1. POOL CAPACITY SIGN
2. NO DIVING SIGN
3. NO LIFEGUARD SIGN
4. ARTIFICIAL RESPIRATION AND CARDIOPULMONARY RESUSITATION SIGN
5. EMERGENCY SIGN
6. SPA WARNING SIGN
7. EMERGENCY SHUT-OFF SWITCH SIGN
8. DIARRHEA NOTICE SIGNAGE



**APPROVED**

ALL DIMENSIONS SUBJECT TO 1/4" TOLERANCES

These drawings, concepts, and details contained herein are the original proprietary designs of **NESPA ENTERPRISES INC.**, developed over many years of experience in the industry and as such are protected by the copyright laws of the United States Government. Reproduction of any of the above without written permission to do so by **NESPA ENTERPRISES INC.**, is illegal.

### NESPA ENTERPRISES INC.

2800 Richter Ave. Ste. C Oroville, CA 95966

Office: (530) 534-9910

Fax: (530) 534-9915

E-Mail: [jim@tiledspas.com](mailto:jim@tiledspas.com) Web Site: [www.tiledspas.com](http://www.tiledspas.com)



#### If printing as a PDF:

Page Scaling: None

DWG NAME

217 E 8TH ST LA

SCALE

N/A

DATE

12/15/2014

DWG TYPE

Equipment ID

SHEET

PAGE 7 OF 12

## SPA EQUIPMENT MANUFACTURER LINKS

BOOSTER PUMP- PENTAIR CHALLENGER 3HP MODEL CHII-N1-3 FE 3 132

<http://www.pentairpool.com/products/pumps-inground-challenger-high-flow-pumps-23.htm>

CIRCULATION PUMP-PENTAIR WHISPERFLOW 1HP MODEL WFE-4X

<http://www.pentairpool.com/products/pumps-inground-whisperflo-high-performance-pump-193.htm>

FILTER AND INFLUENT PRESSURE GAUGE- PENTAIR CLEAN AND CLEAR PLUS MODEL CCP-320

<http://www.pentairpool.com/products/filters-cartridge-clean-clear-plus-cartridge-filters-27.htm>

HEATER- RAYPAK NATURAL GAS MODEL C-R407A-EN-X-010230 LOW NOX ASME 399 BTU

<http://www.raypak.com/product.aspx?id=9E2AE95B-2AB1-4B62-BDCB-D0492BD719B1>

CONTROL PANEL- PENTAIR COMPOOL MODEL LX 820, WITH EMERG. SHUT OFF

<http://pentaircommercial.com/products/automation-lx80-lx820-systems-92.htm>

CHEMICAL PUMPS- STENNER MODEL 45M 1 3LBS. PER DAY

<http://stenner-pumps.com>

CHEMICAL CONTROL- CHEMTROL MODEL 255, PH AND PPM DISPLAY.

<http://sbcontrol.com/ch255.htm>

CHEMICAL CONTAINMENT TANKS- GEMINI MODEL 020 20GAL DOUBLE WALL UV RESISTANT.

<http://www.etanks.com/products/default.aspx?cat=1&subcat=58>

CHEMICAL TEST KIT- TAYLOR MODEL-K2000 DPD FOR CHLORINE,PHENOL RED FOR ACID

[https://www.taylortechnologies.com/products\\_kitinfo.asp?KitID=2223](https://www.taylortechnologies.com/products_kitinfo.asp?KitID=2223)

FLOWMETER- BLUE WHITE MODEL F250

[http://www.bluwhite.com/products/VariableArea/F-300/pitot\\_productpage.asp](http://www.bluwhite.com/products/VariableArea/F-300/pitot_productpage.asp)

VACUUM GAUGE

<http://www.grainger.com/product/Vacuum-Gauge-4FMF8?searchQuery=4fmf8>

VACLESS ANTI ENTRAPMENT VACUUM RELEASE

<http://www.Vacless.com>

**APPROVED**

ALL DIMENSIONS SUBJECT TO 1/4" TOLERANCES

### **NESPA ENTERPRISES INC.**

2800 Richter Ave. Suite C Oroville, CA 95966

Office: (530) 534-9910

Fax: (530) 534-9915

E-Mail: [jim@tiledspas.com](mailto:jim@tiledspas.com) Web Site: [www.tiledspas.com](http://www.tiledspas.com)

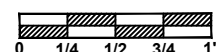


**If printing as a PDF:**

Page Scaling:

SCALE

N/A



DWG TYPE

EQ MFGs

DWG NAME

217 E 8TH ST LA

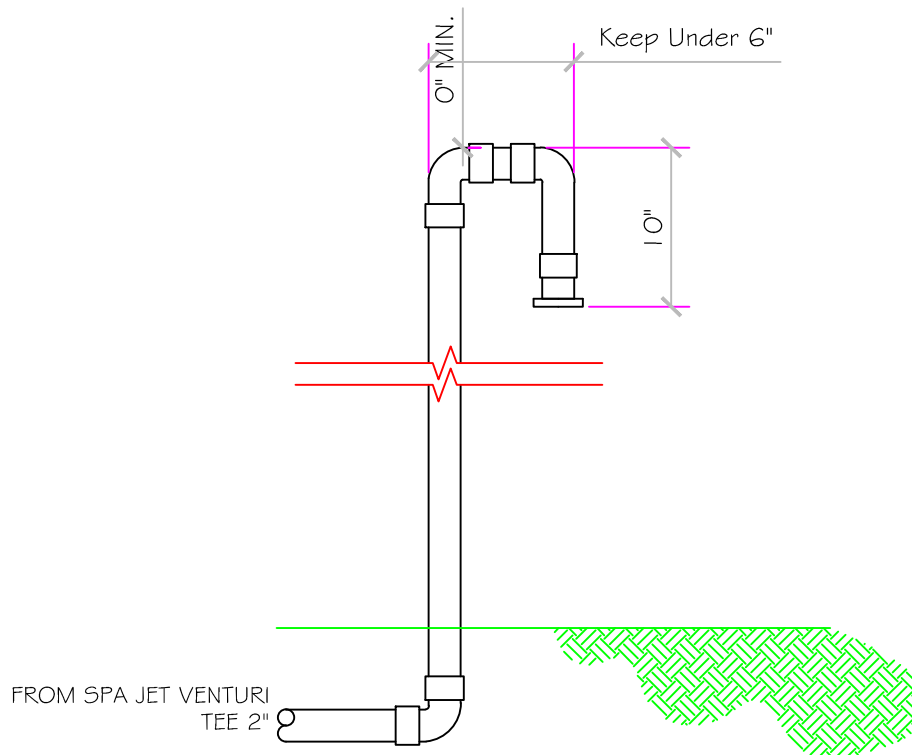
DATE

12/15/2014

SHEET

PAGE 8 OF 12

These drawings, concepts, and details contained herein are the original proprietary designs of [NESPA ENTERPRISES INC.](http://www.tiledspas.com), developed over many years of experience in the industry and as such are protected by the copyright laws of the United States Government. Reproduction of any of the above without written permission to do so by [NESPA ENTERPRISES INC.](http://www.tiledspas.com), is illegal.



## AIR SUPPLY LOOP DETAIL

All drawing dimensions supplied by [NESPA ENTERPRISES INC.](#) are for reference only. All CAD files were created using AutoCAD file (\*.dwg.) and were provided as a service to our customers using AutoCAD. Errors sometimes occur during this process and with software incompatibility upon opening a file. [NESPA ENTERPRISES INC.](#) and/or any authorized distributor of our products will not be held responsible for problems arising from files which have been converted and does not warranty the documents against deficiencies or typographical errors of any kind. We recommend that all measurements are verified with actual physical product before any custom fabrication in the field occurs.

**APPROVED**

ALL DIMENSIONS SUBJECT TO 1/4" TOLERANCES

### NESPA ENTERPRISES INC.

2800 Richter Ave. Suite C Oroville, CA 95966

Office: (530) 534-9910

Fax: (530) 534-9915

E-Mail: [jim@tiledspas.com](mailto:jim@tiledspas.com) Web Site: [www.tiledspas.com](http://www.tiledspas.com)



#### If printing as a PDF:

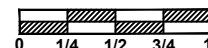
Page Scaling:

DWG NAME

217 E 8TH ST LA

SCALE

1" = 1'



DWG TYPE

Air Venturi Detail

DATE

12/15/2014

SHEET

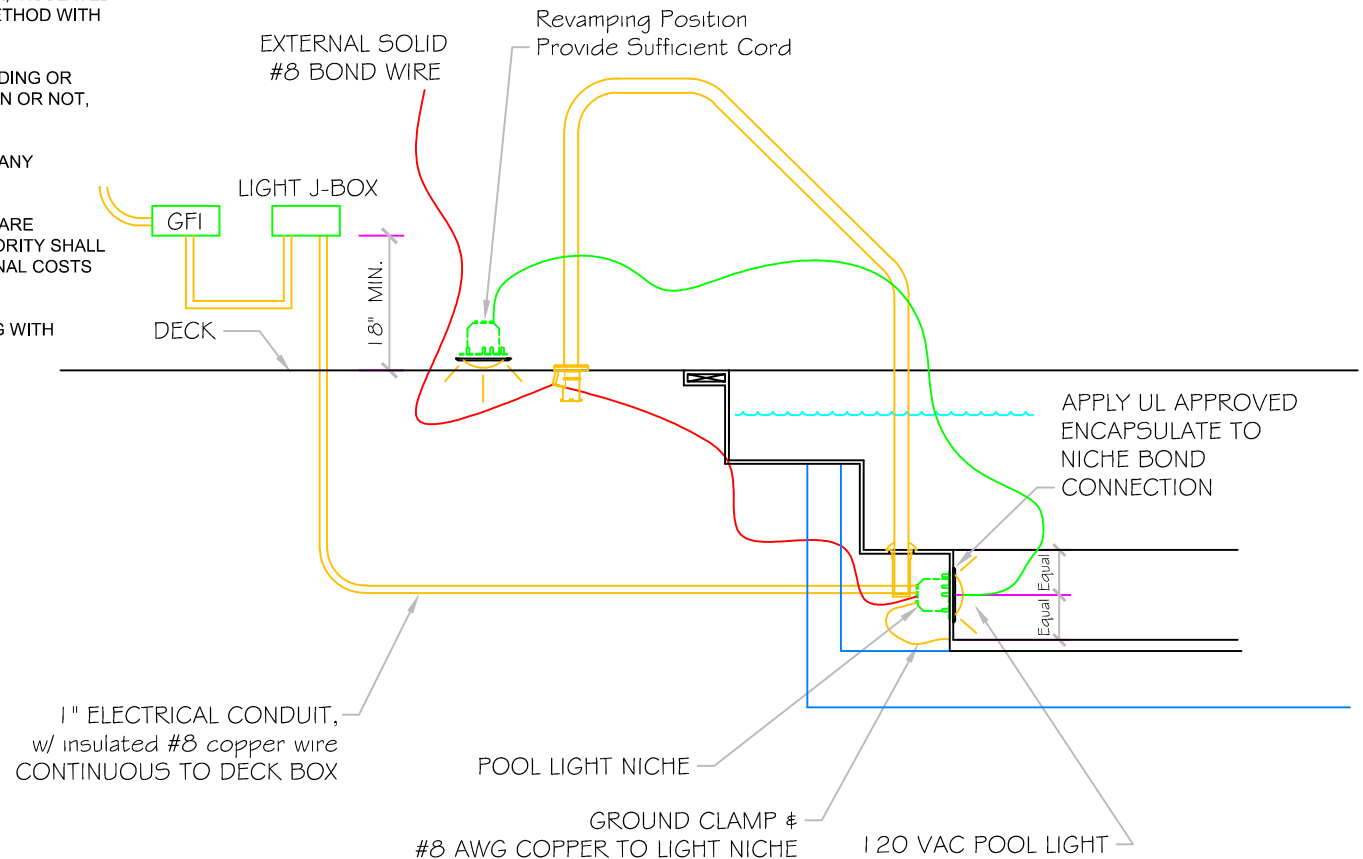
PAGE 9 OF 12

These drawings, concepts, and details contained herein are the original proprietary designs of [NESPA ENTERPRISES INC.](#), developed over many years of experience in the industry and as such are protected by the copyright laws of the United States Government. Reproduction of any of the above without written permission to do so by [NESPA ENTERPRISES INC.](#), is illegal.

## POOL BONDING REQUIREMENTS:

1. THE FOLLOWING PARTS SHALL BE BONDED TOGETHER AND CONNECTED TO THE COMMON BONDING GRID.
  - A. ALL THE METALLIC PARTS OF THE POOL STRUCTURE INCLUDING COPPING STONES, DECK, PERMANENT PLAY STRUCTURES, PERMANENT EXERCISE STRUCTURES.
  - B. ALL METAL FITTINGS WITHIN OR ATTACHED TO THE POOL STRUCTURE
  - C. METAL PARTS ASSOCIATED WITH THE POOL WATER CIRCULATING SYSTEM, INCLUDING PUMPS, FILTERS, AND HEATERS.
  - D. METAL PARTS ASSOCIATED WITH POOL COVERS
  - E. METAL SHEATHED CABLES AND RACEWAYS, METAL PIPING AND ALL FIXED METAL PARTS WITHIN 5 FEET HORIZONTALLY OF INSIDE WALLS OF POOL AND WITHIN 12 FEET ABOVE MAXIMUM WATER LEVEL OF POOL.
  - F. METAL PARTS ASSOCIATED WITH OBSERVATION STANDS, TOWERS, PLATFORMS, AND DIVING STRUCTURES.
2. BONDING CONDUCTORS SHALL BE MINIMUM #8 SOLID COPPER, INSULATED
- E.C. SHALL COORDINATE APPROVED CONNECTOR TYPE AND METHOD WITH LOCAL ELECTRICAL AND/ OR POOL INSPECTOR.
3. SPECIFIC MANUFACTURER'S INSTRUCTIONS REGARDING BONDING OR GROUNDING OF POOL EQUIPMENT, WHETHER INDICATED HEREIN OR NOT, SHALL BE STRICTLY FOLLOWED.
4. THE COMMON BONDING GRID SHALL NOT BE CONNECTED TO ANY ELECTRICAL DISTRIBUTION EQUIPMENT.
5. ANY PARTS IN ADDITION TO THOSE DESCRIBED HEREIN THAT ARE INDICATED BY POOL CONTRACTOR OR LOCAL INSPECTION AUTHORITY SHALL BE BONDED TO THE COMMON BONDING GRID WITH NO ADDITIONAL COSTS INCURRED BY THE OWNER.
6. THE ELECTRICAL CONTRACTOR SHALL COORDINATE BONDING WITH GENERAL CONTRACTOR.

## LIGHT DETAIL



**APPROVED**

ALL DIMENSIONS SUBJECT TO 1/4" TOLERANCES

These drawings, concepts, and details contained herein are the original proprietary designs of **NESPA ENTERPRISES INC.**, developed over many years of experience in the industry and as such are protected by the copyright laws of the United States Government. Reproduction of any of the above without written permission to do so by **NESPA ENTERPRISES INC.**, is illegal.

**NESPA ENTERPRISES INC.**

2800 Richter Ave. Ste. C Oroville, CA 95966

Office: (530) 534-9910

Fax: (530) 534-9915

E-Mail: [jim@tiledspas.com](mailto:jim@tiledspas.com) Web Site: [www.tiledspas.com](http://www.tiledspas.com)



**If printing as a PDF:**

Page Scaling:

DWG NAME

217 E 8TH ST LA

SCALE

N/A

DATE

12/15/2014

DWG TYPE

Light Detail

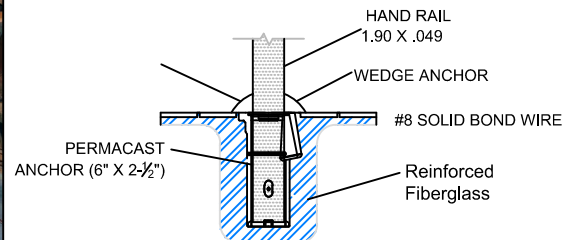
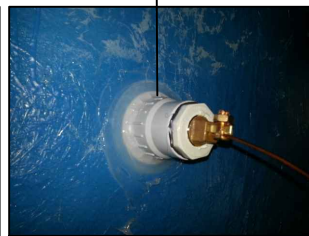
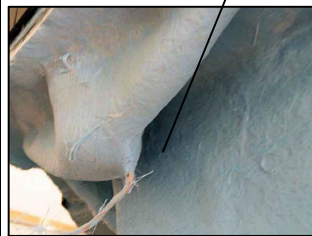
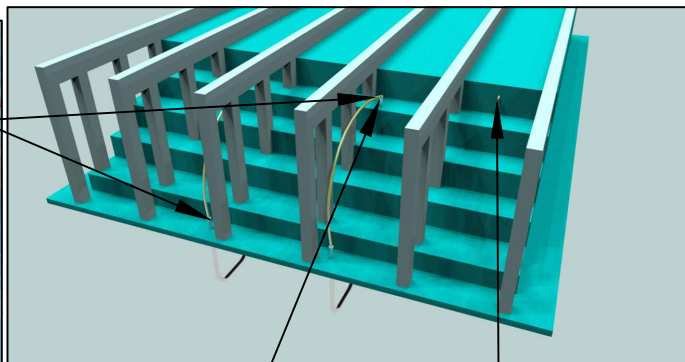
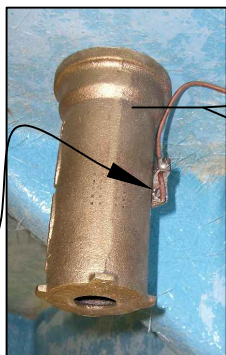
SHEET

PAGE 10 OF 12

## BONDING DETAIL



Typical Cup  
Anchor



**NOTE:**

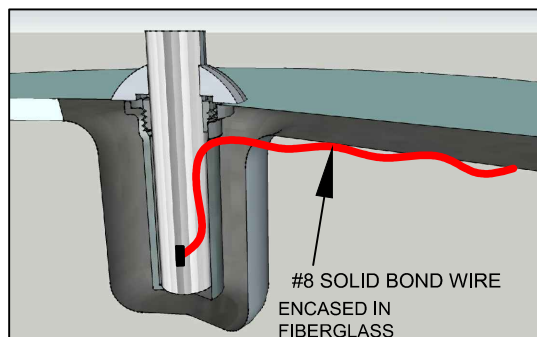
DETAIL REFLECTS ANCHOR INSTALLATION IN NESPA SHELLS ONLY.


CUP ANCHOR SHALL BE BONDED WITH A SOLID #8 COPPER BOND WIRE AND VERIFIED BY A CALIFORNIA LICENSED ELECTRICAL CONTRACTOR.

BOND WIRE WILL BE ENCASED AND COVERED IN FIBERGLASS TO PREVENT WATER LEAKAGE THRU SHELL.

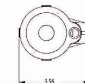
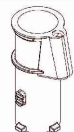
BOND WIRE SHALL EXIT AT EDGE OF SPA AND ATTACH TO DECK BONDING GRID.

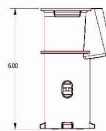
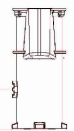
① Anchor  
Detail




**Swimming Pool Products**  
1871 Aspen Circle • Pueblo, Colorado 81008 • Phone 719-544-9544

**PS-6019-BC**  
**6 Inch Big Boy Socket**

- 6" Deep Socket
- Accommodates 1.50" OD Tubing
- Uses PW-4C Wedge
- Includes Wedge, Washer, Bolt and Bonding Screw

QTY	Parts List
1	PS-6019-BC Socket Bronze
1	PW-4C Wedge
1	Stainless Steel Washer
1	5/16-18 X 1-3/4" SS Bolt
1	10-24 X 3/8" Brass Screw

APPROVED

ALL DIMENSIONS SUBJECT TO 1/4" TOLERANCES

These drawings, concepts, and details contained herein are the original proprietary designs of **NESPA ENTERPRISES INC.**, developed over many years of experience in the industry and as such are protected by the copyright laws of the United States Government. Reproduction of any of the above without written permission to do so by **NESPA ENTERPRISES INC.**, is illegal.

**NESPA ENTERPRISES INC.**  
 2800 Richter Ave. Ste. C Oroville, CA 95966  
 Office: (530) 534-9910 Fax: (530) 534-9915  
 E-Mail: [jim@tiledspas.com](mailto:jim@tiledspas.com) Web Site: [www.tiledspas.com](http://www.tiledspas.com)



**If printing as a PDF:**

Page Scaling: None

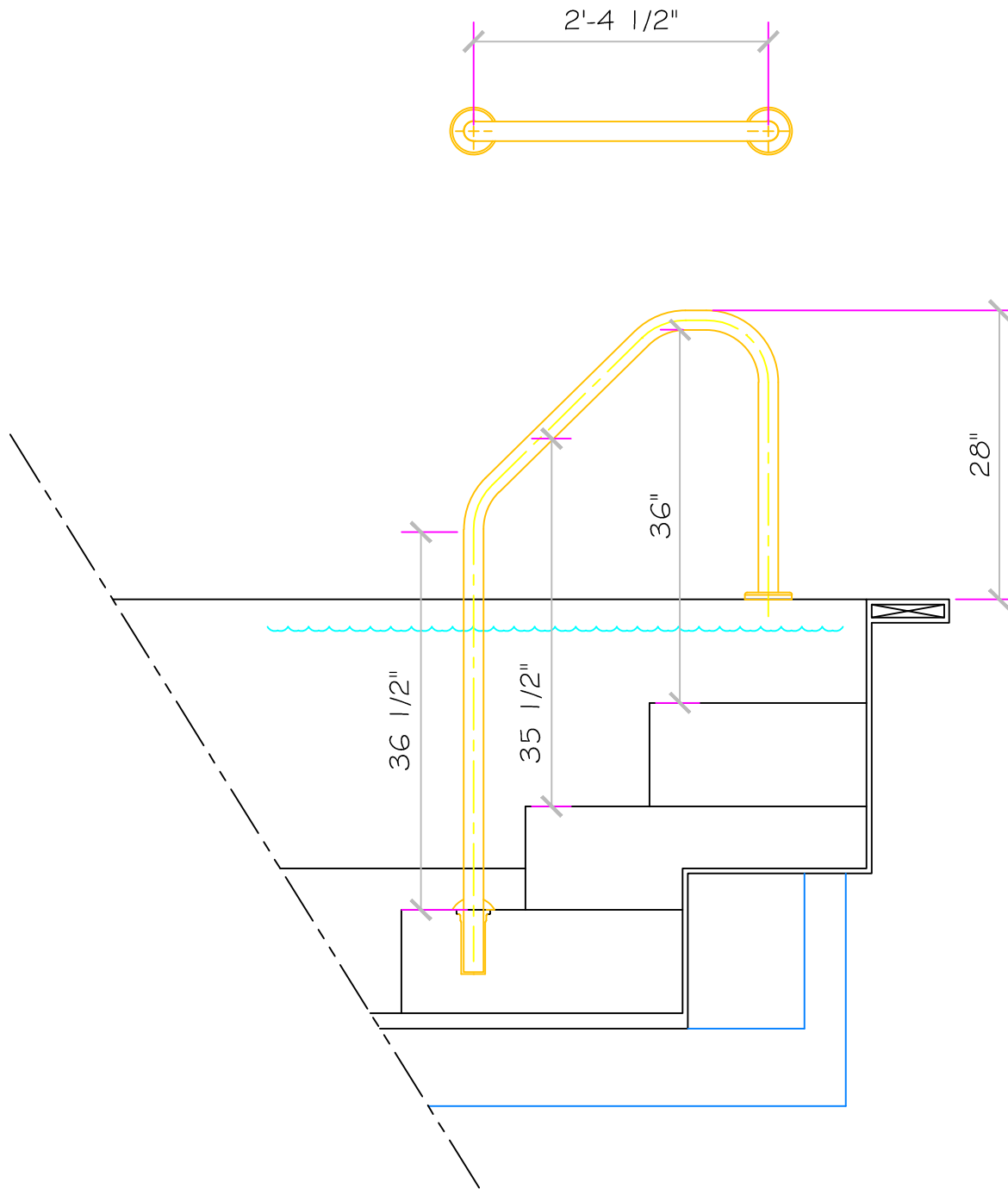
DWG NAME 217 E 8TH ST LA

SCALE  
N/A

DATE 12/15/2014

DWG TYPE  
Bonding Detail

SHEET  
PAGE 11 OF 12



**APPROVED**

ALL DIMENSIONS SUBJECT TO 1/4" TOLERANCES

These drawings, concepts, and details contained herein are the original proprietary designs of **NESPA ENTERPRISES INC.**, developed over many years of experience in the industry and as such are protected by the copyright laws of the United States Government. Reproduction of any of the above without written permission to do so by **NESPA ENTERPRISES INC.**, is illegal.

**NESPA ENTERPRISES INC.**

2800 Richter Ave. Ste. C Oroville, CA 95966

Office: (530) 534-9910

Fax: (530) 534-9915

E-Mail: [jim@tiledspas.com](mailto:jim@tiledspas.com) Web Site: [www.tiledspas.com](http://www.tiledspas.com)



**If printing as a PDF:**

Page Scaling:

DWG NAME

217 E 8TH ST LA

SCALE

3/4" = 1'

DATE

3/3/2015

DWG TYPE

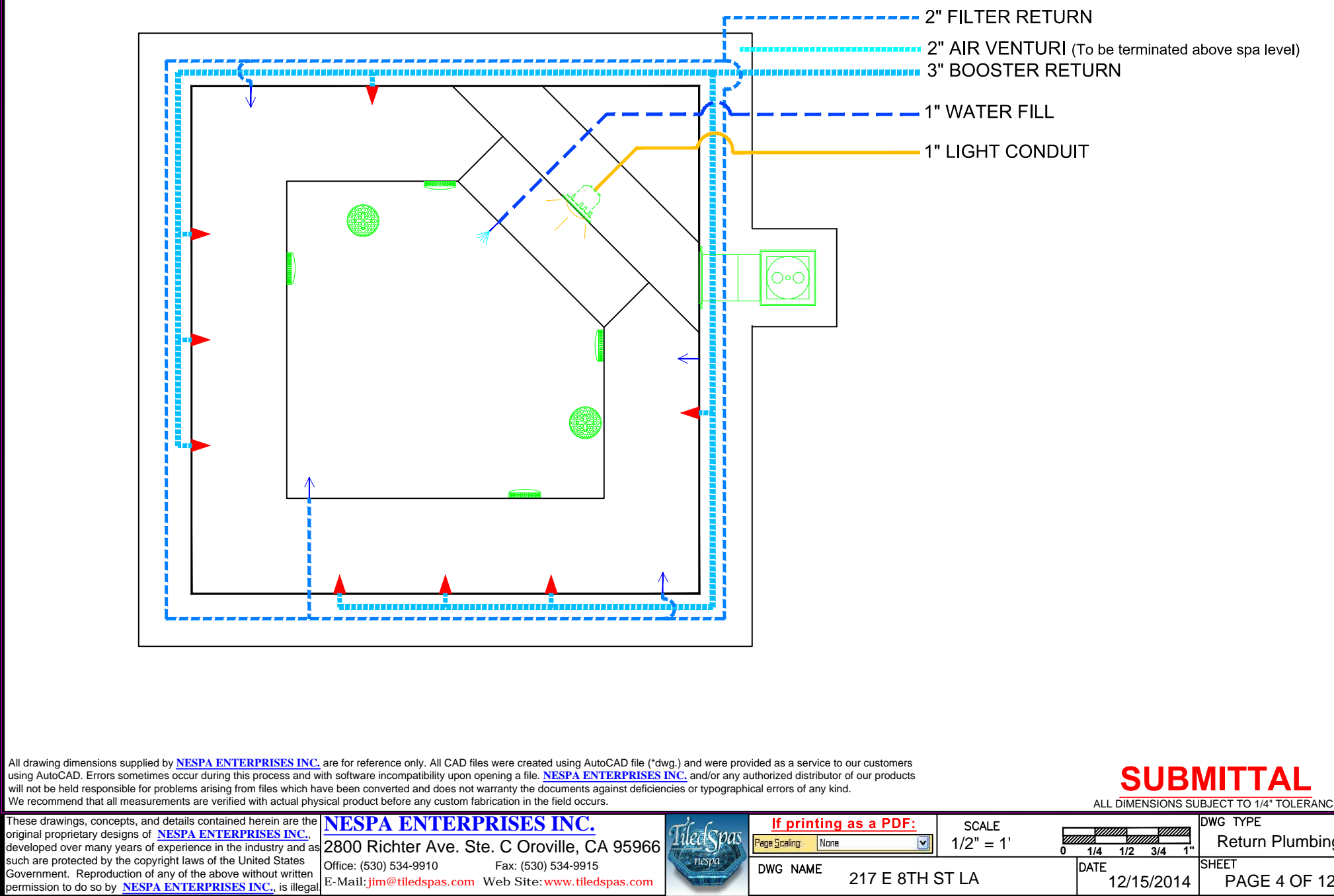
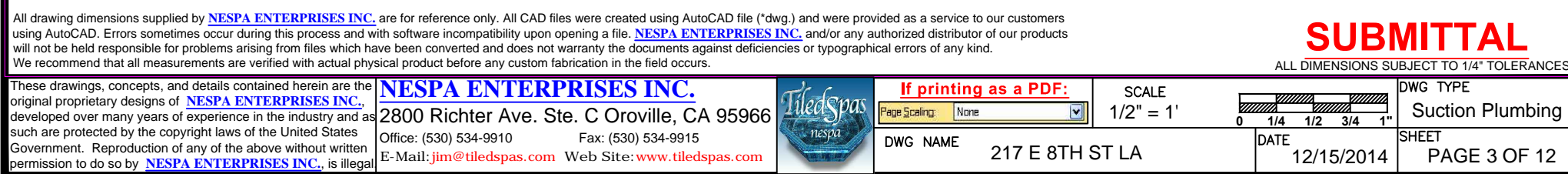
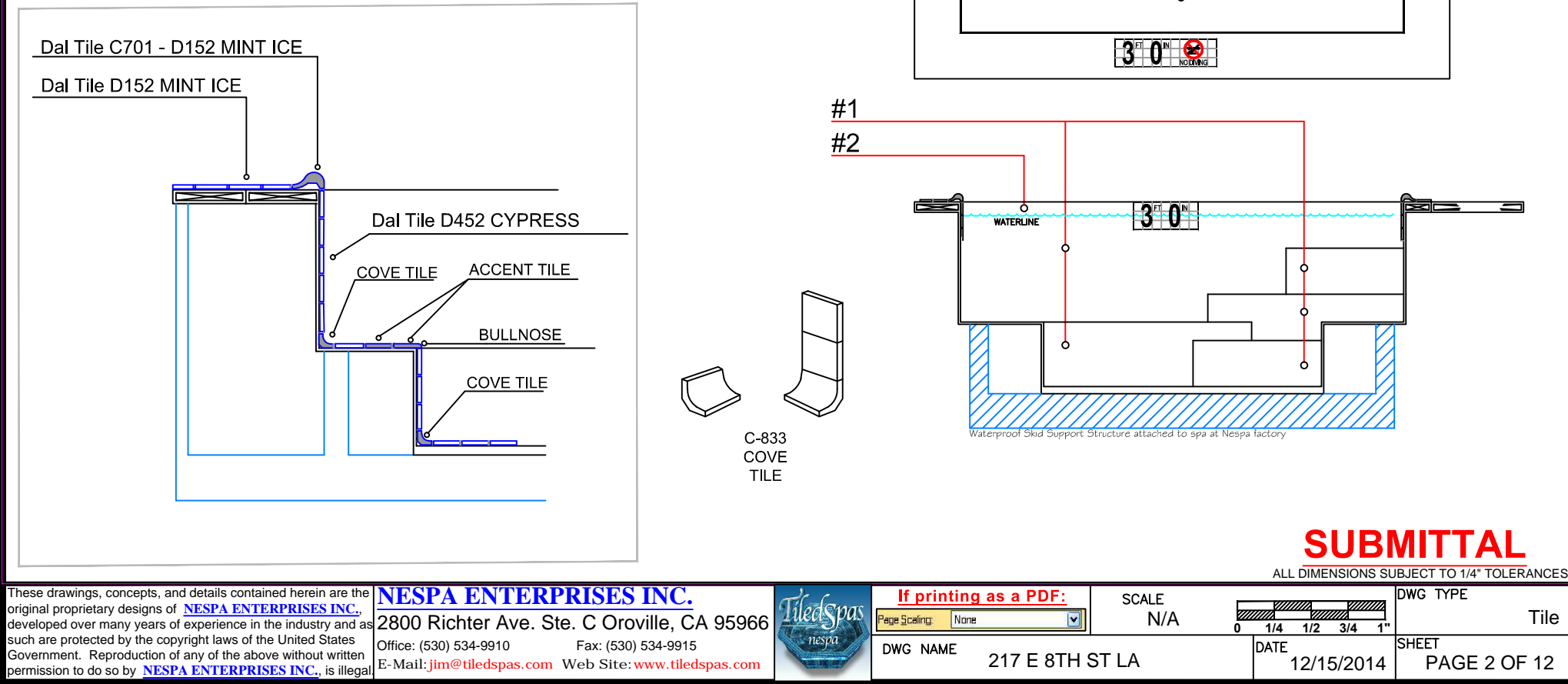
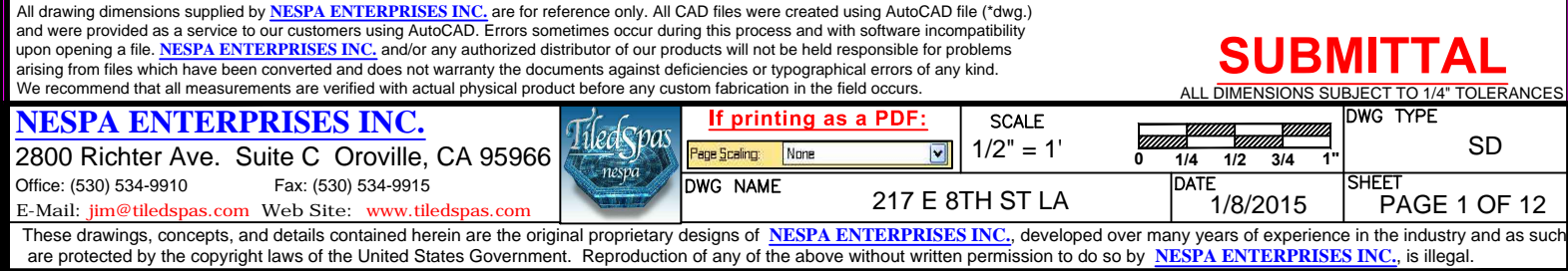
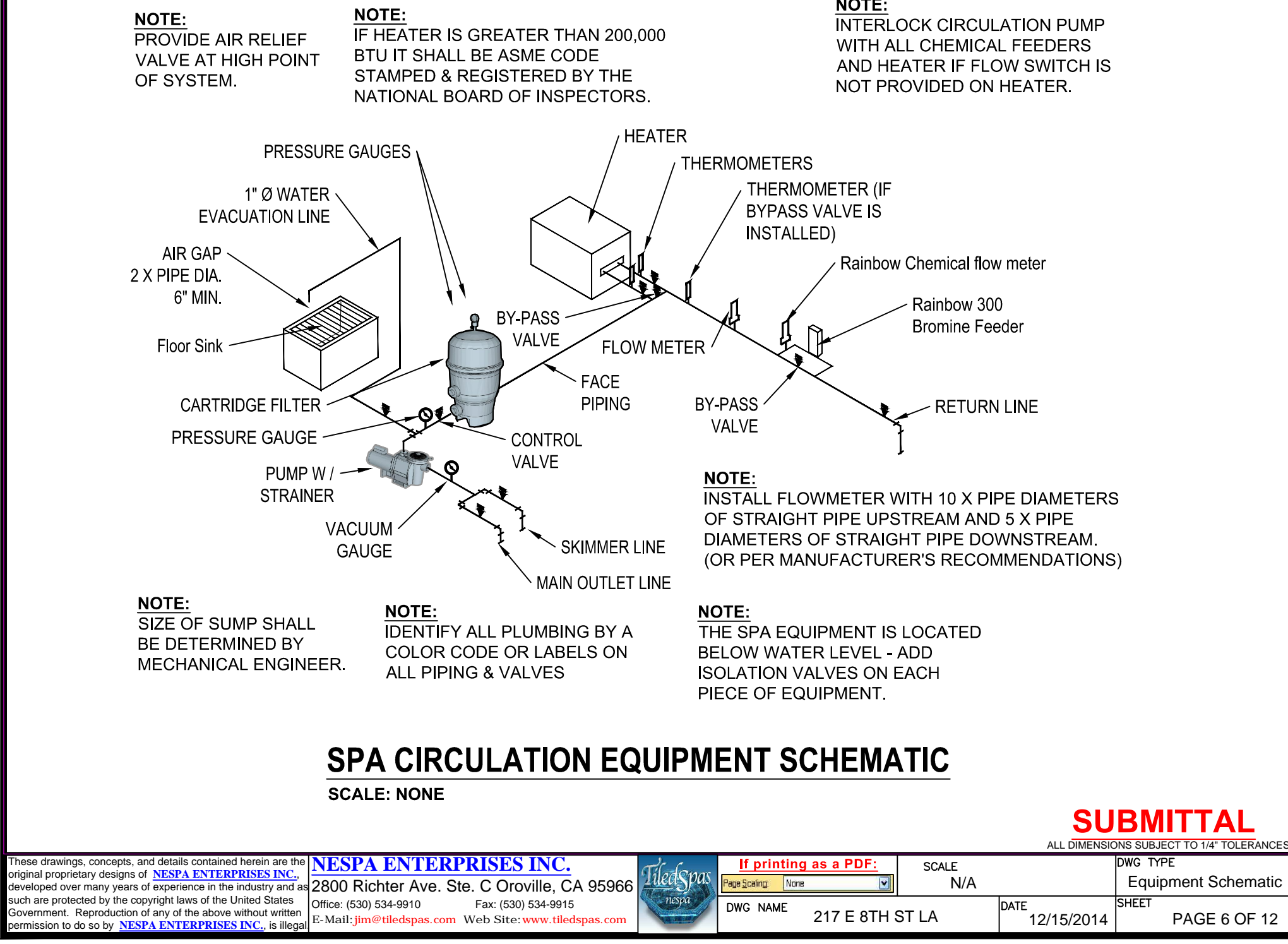
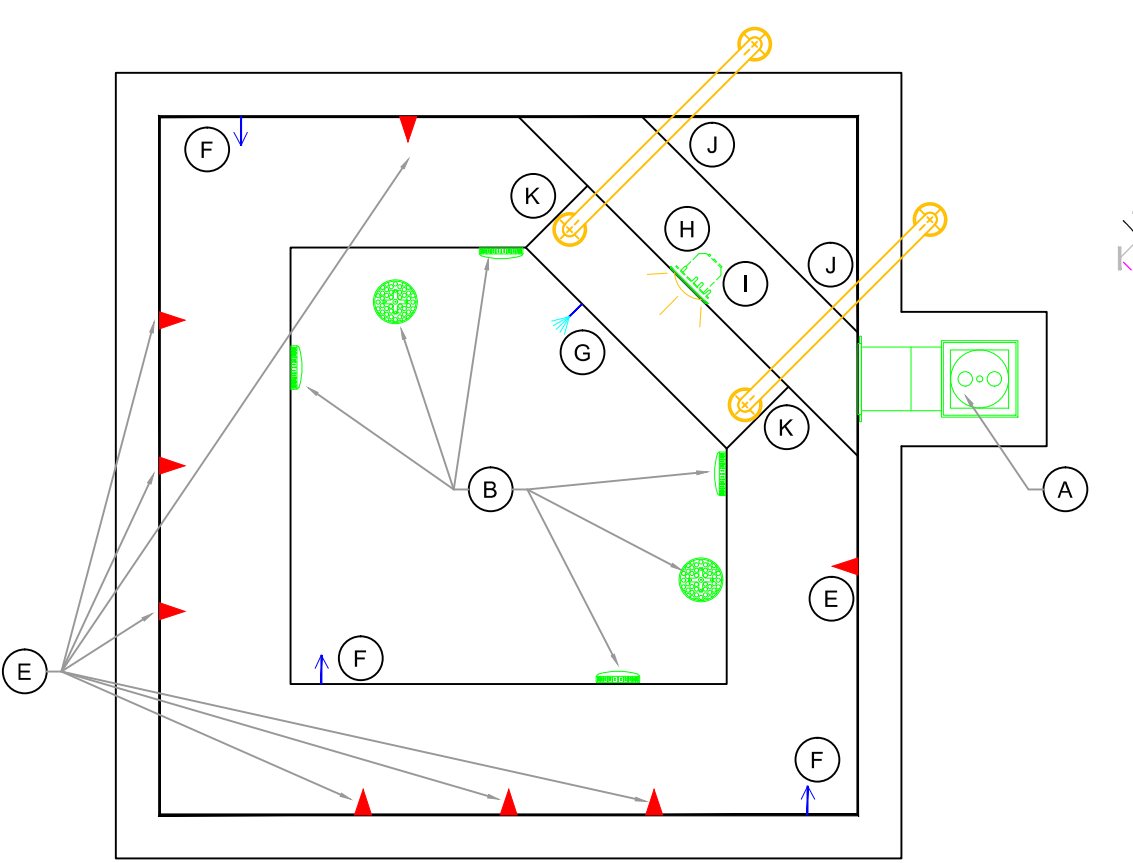
Handrail Detail

SHEET

PAGE 12 OF 12



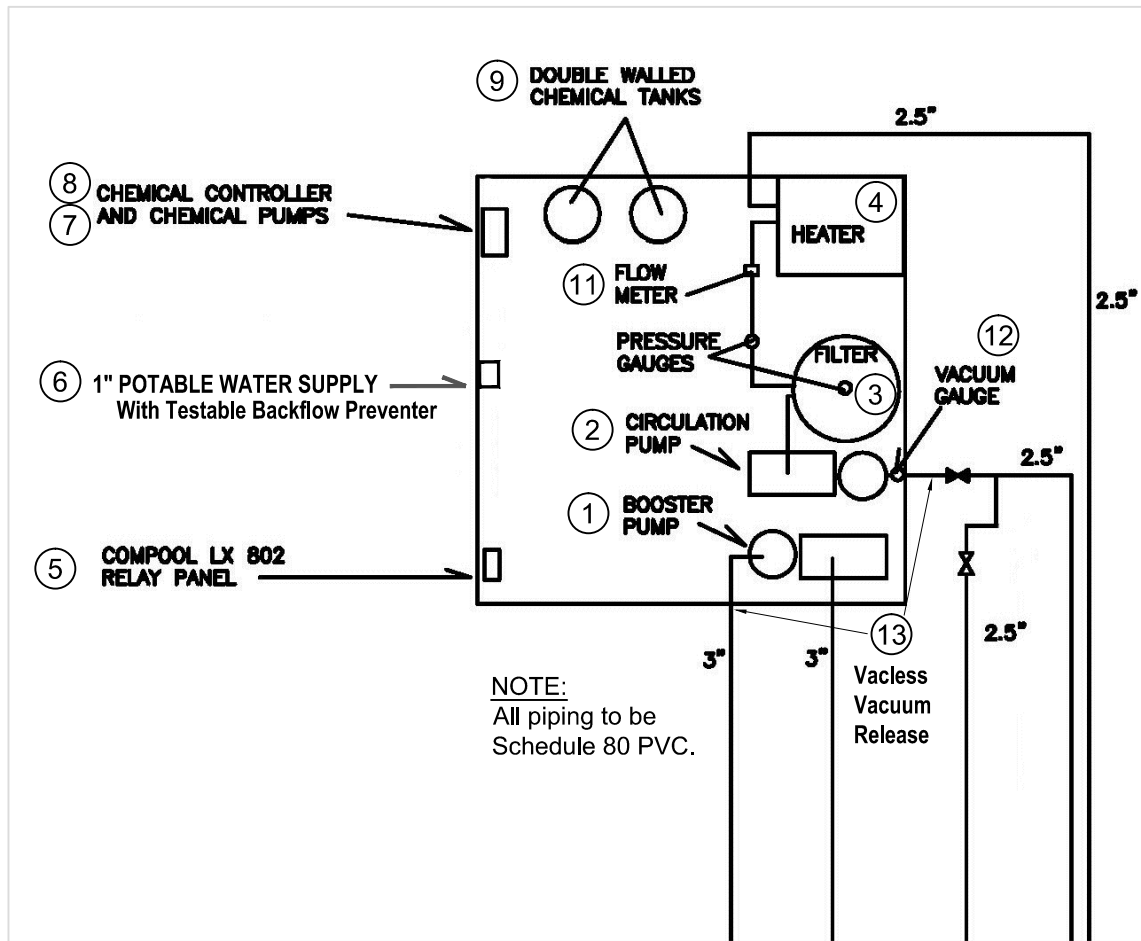
These drawings, concepts, and details contained herein are the original proprietary designs of **NESPA ENTERPRISES INC.**, developed over many years of experience in the industry and as such are protected by the copyright laws of the United States Government. Reproduction of any of the above without written permission to do so by **NESPA ENTERPRISES INC.**, is illegal.

[illegible]



# SPA EQUIPMENT

1. BOOSTER PUMP- PENTAIR WHISPERFLOW - 2HP MODEL WFE-4X
  2. CIRCULATION PUMP-PENTAIR WHISPERFLOW - 1HP MODEL WFE-4X
  3. FILTER AND INFLUENT PRESSURE GAUGE- PENTAIR CLEAN AND CLEAR PLUS MODEL CCP-320
  4. HEATER- RAYPAK NATURAL GAS MODEL C-R407A-EN-X-010230 LOW NOX ASME 399 BTU
  5. CONTROL PANEL- PENTAIR COMPOOL MODEL LX 820, WITH EMERG. SHUT OFF
  6. 1" POTABLE WATER SUPPLY WITH TESTABLE BACKFLOW PREVENTER
  7. CHEMICAL PUMPS- STENNER MODEL 45M 1 3LBS. PER DAY
  8. CHEMICAL CONTROL- CHEMTROL MODEL 255, PH AND PPM DISPLAY.
  9. CHEMICAL CONTAINMENT TANKS- GEMINI MODEL 020 20GAL DOUBLEWALL
  10. CHEMICAL TEST KIT- TAYLOR MODEL-K2000, DPD, PH.
  11. FLOWMETER- BLUE WHITE MODEL F-250
  12. VACUUM GAUGE
  13. ANTI ENTRAPMENT VACUUM RELEASE, VACLESS MODEL SVRS10A0D
  14. SIGNAGE COMPLIANT WITH COUNTY OF LOS ANGELES -DEPARTMENT OF PUBLIC HEALTH ENVIRONMENTAL HEALTH&RECREATIONAL WATERS PROGRAM SWIMMING POOL PLAN APPROVAL REQUIREMENTS.
1. POOL CAPACITY SIGN
  2. NO DIVING SIGN
  3. NO LIFEGUARD SIGN
  4. ARTIFICIAL RESPIRATION AND CARDIOPULMONARY RESUSITATION SIGN
  5. EMERGENCY SIGN
  6. SPA WARNING SIGN
  7. EMERGENCY SHUT-OFF SWITCH SIGN
  8. DIARRHEA NOTICE SIGNAGE



## SUBMITTAL

These drawings, concepts, and details contained herein are the original proprietary designs of **NESPA ENTERPRISES INC.**, developed over many years of experience in the industry and such are protected by the copyright laws of the United States Government. Reproduction of any of the above without written permission to do so by **NESPA ENTERPRISES INC.**, is illegal.

**NESPA ENTERPRISES INC.**  
2800 Richter Ave. Ste. C Oroville, CA 95966  
Office: (530) 534-9910 Fax: (530) 534-9915  
E-Mail: [jim@tiledspas.com](mailto:jim@tiledspas.com) Web Site: [www.tiledspas.com](http://www.tiledspas.com)

If printing as a PDF: SCALE: N/A DWG TYPE: Equipment ID  
DWG NAME: 217 E 8TH ST LA DATE: 12/15/2014 SHEET: PAGE 7 OF 12

# SPA EQUIPMENT MANUFACTURER LINKS

BOOSTER PUMP- PENTAIR CHALLENGER 3HP MODEL CHII-N1-3 FE 3 132  
<http://www.pentairpool.com/products/pumps-inground-challenger-high-flow-pumps-23.htm>

CIRCULATION PUMP-PENTAIR WHISPERFLOW 1HP MODEL WFE-4X  
<http://www.pentairpool.com/products/pumps-inground-whisperflo-high-performance-pump-193.htm>

FILTER AND INFLUENT PRESSURE GAUGE- PENTAIR CLEAN AND CLEAR PLUS MODEL CCP-320  
<http://www.pentairpool.com/products/filters-cartridge-clean-clear-plus-cartridge-filters-27.htm>

HEATER- RAYPAK NATURAL GAS MODEL C-R407A-EN-X-010230 LOW NOX ASME 399 BTU  
<http://www.raypak.com/product.aspx?id=9E2AE95B-2AB1-4B62-BDCB-D0492BD719B1>

CONTROL PANEL- PENTAIR COMPOOL MODEL LX 820, WITH EMERG. SHUT OFF  
<http://pentaircommercial.com/products/automation-lx80-lx820-systems-92.htm>

CHEMICAL PUMPS- STENNER MODEL 45M 1 3LBS. PER DAY  
<http://stenner-pumps.com>

CHEMICAL CONTROL- CHEMTROL MODEL 255, PH AND PPM DISPLAY.  
<http://sbcontrol.com/ch255.htm>

CHEMICAL CONTAINMENT TANKS- GEMINI MODEL 020 20GAL DOUBLE WALL UV RESISTANT.  
<http://www.etanks.com/products/default.aspx?cat=1&subcat=58>

CHEMICAL TEST KIT- TAYLOR MODEL-K2000 DPD FOR CHLORINE,PHENOL,RED FOR ACID  
[https://www.taylor technologies.com/products\\_kitinfo.asp?KitID=2223](https://www.taylor technologies.com/products_kitinfo.asp?KitID=2223)

FLOWMETER- BLUE WHITE MODEL F250  
[http://www.blwhite.com/products/VariableArea/F-300/pitot\\_productpage.asp](http://www.blwhite.com/products/VariableArea/F-300/pitot_productpage.asp)

VACUUM GAUGE  
<http://www.grainger.com/product/Vacuum-Gauge-4FMF8?searchQuery=4fmf8>

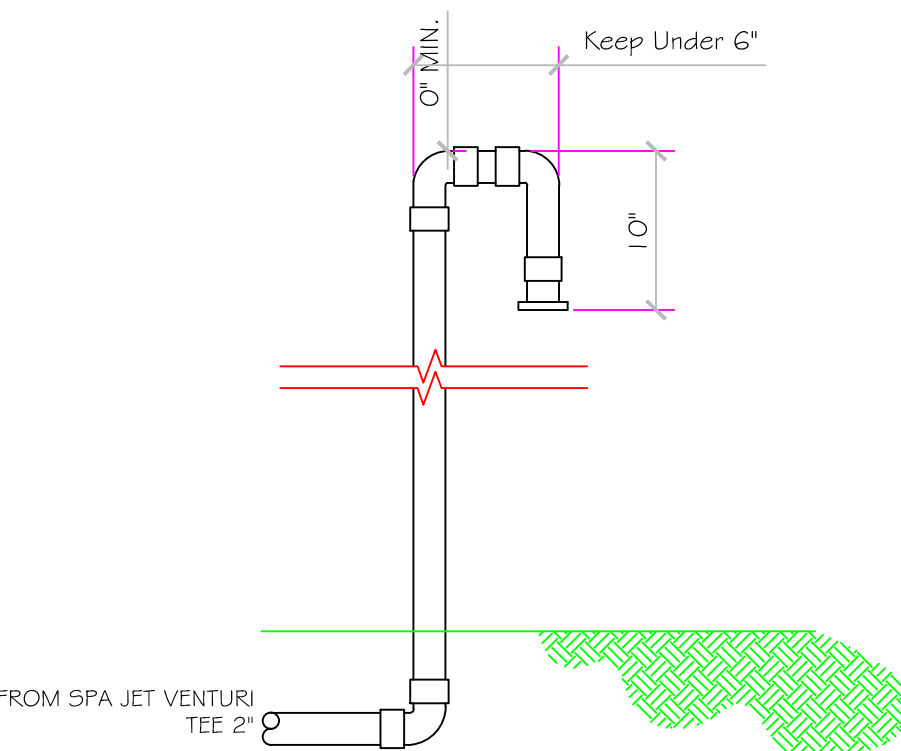
VACLESS ANTI ENTRAPMENT VACUUM RELEASE  
<http://www.Vacless.com>

## SUBMITTAL

These drawings, concepts, and details contained herein are the original proprietary designs of **NESPA ENTERPRISES INC.**, developed over many years of experience in the industry and such are protected by the copyright laws of the United States Government. Reproduction of any of the above without written permission to do so by **NESPA ENTERPRISES INC.**, is illegal.

**NESPA ENTERPRISES INC.**  
2800 Richter Ave. Suite C Oroville, CA 95966  
Office: (530) 534-9910 Fax: (530) 534-9915  
E-Mail: [jim@tiledspas.com](mailto:jim@tiledspas.com) Web Site: [www.tiledspas.com](http://www.tiledspas.com)

If printing as a PDF: SCALE: N/A DWG TYPE: Equipment MFG  
DWG NAME: 217 E 8TH ST LA DATE: 12/15/2014 SHEET: PAGE 8 OF 12



## AIR SUPPLY LOOP DETAIL

All drawing dimensions supplied by **NESPA ENTERPRISES INC.**, are for reference only. All CAD files were created using AutoCAD file (\*.dwg) and were provided as a service to our customers using AutoCAD. Errors sometimes occur during this process and with software incompatibility upon opening a file. **NESPA ENTERPRISES INC.**, and/or any authorized distributor of our products will not be held responsible for problems arising from files which have been converted and does not warranty the documents against deficiencies or typographical errors of any kind. We recommend that all measurements are verified with actual physical product before any custom fabrication in the field occurs.

## SUBMITTAL

These drawings, concepts, and details contained herein are the original proprietary designs of **NESPA ENTERPRISES INC.**, developed over many years of experience in the industry and as such are protected by the copyright laws of the United States Government. Reproduction of any of the above without written permission to do so by **NESPA ENTERPRISES INC.**, is illegal.

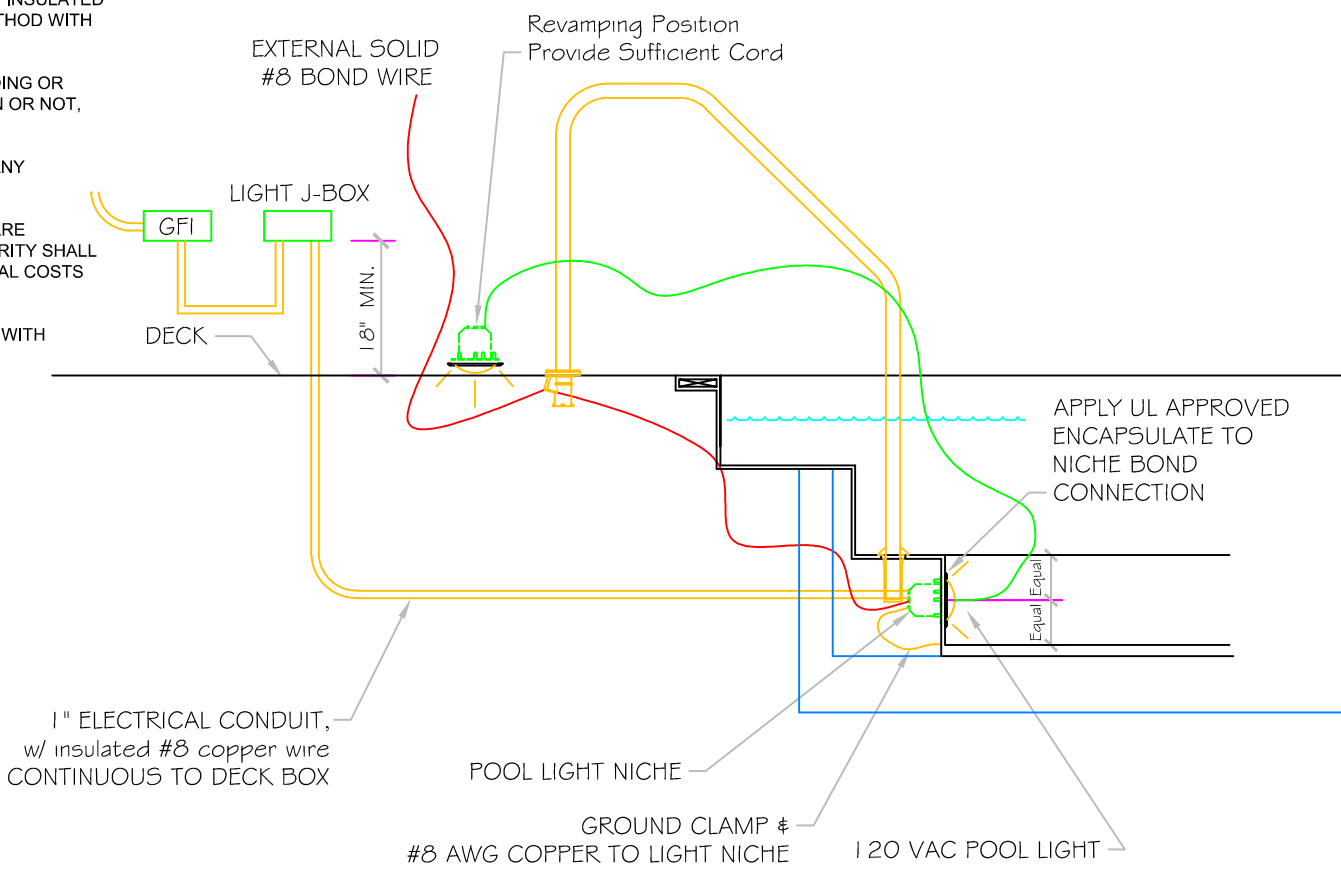
**NESPA ENTERPRISES INC.**  
2800 Richter Ave. Suite C Oroville, CA 95966  
Office: (530) 534-9910 Fax: (530) 534-9915  
E-Mail: [jim@tiledspas.com](mailto:jim@tiledspas.com) Web Site: [www.tiledspas.com](http://www.tiledspas.com)

If printing as a PDF: SCALE: 1" = 1' DWG TYPE: Air Venturi Detail  
DWG NAME: 217 E 8TH ST LA DATE: 12/15/2014 SHEET: PAGE 9 OF 12

# POOL BONDING REQUIREMENTS:

1. THE FOLLOWING PARTS SHALL BE BONDED TOGETHER AND CONNECTED TO THE COMMON BONDING GRID:
  - A. ALL THE METALLIC PARTS OF THE POOL STRUCTURE INCLUDING COPING STONES, DECK, PERMANENT PLAY STRUCTURES, PERMANENT EXERCISE STRUCTURES.
  - B. ALL METAL FITTINGS WITHIN OR ATTACHED TO THE POOL STRUCTURE
  - C. METAL PARTS ASSOCIATED WITH THE POOL WATER CIRCULATING SYSTEM, INCLUDING PUMPS, FILTERS, AND HEATERS.
  - D. METAL PARTS ASSOCIATED WITH POOL COVERS
  - E. METAL SHEATHED CABLES AND RACEWAYS, METAL PIPING AND ALL FIXED METAL PARTS WITHIN 5 FEET HORIZONTALLY OF INSIDE WALLS OF POOL AND WITHIN 12 FEET ABOVE MAXIMUM WATER LEVEL OF POOL.
  - F. METAL PARTS ASSOCIATED WITH OBSERVATION STANDS, TOWERS, PLATFORMS, AND DIVING STRUCTURES.
2. BONDING CONDUCTORS SHALL BE MINIMUM #8 SOLID COPPER, INSULATED E.C. SHALL COORDINATE APPROVED CONNECTOR TYPE AND METHOD WITH LOCAL ELECTRICAL AND/OR POOL INSPECTOR.
3. SPECIFIC MANUFACTURER'S INSTRUCTIONS REGARDING BONDING OR GROUNDING OF POOL EQUIPMENT, WHETHER INDICATED HEREIN OR NOT, SHALL BE STRICTLY FOLLOWED.
4. THE COMMON BONDING GRID SHALL NOT BE CONNECTED TO ANY ELECTRICAL DISTRIBUTION EQUIPMENT.
5. ANY PARTS IN ADDITION TO THOSE DESCRIBED HEREIN THAT ARE INDICATED BY POOL CONTRACTOR OR LOCAL INSPECTION AUTHORITY SHALL BE BONDED TO THE COMMON BONDING GRID WITH NO ADDITIONAL COSTS INCURRED BY THE OWNER.
6. THE ELECTRICAL CONTRACTOR SHALL COORDINATE BONDING WITH GENERAL CONTRACTOR.

## LIGHT DETAIL



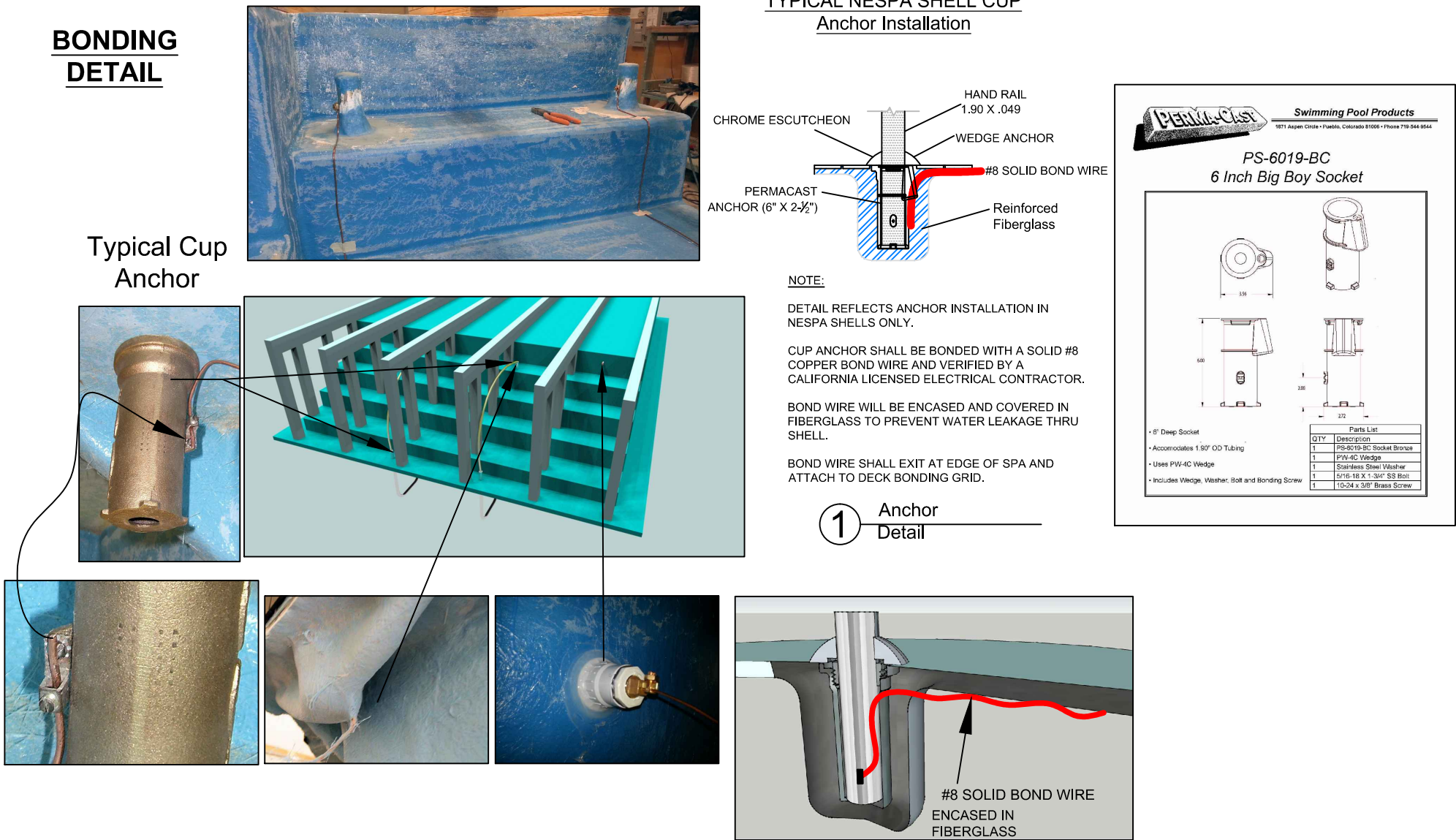
## SUBMITTAL

These drawings, concepts, and details contained herein are the original proprietary designs of **NESPA ENTERPRISES INC.**, developed over many years of experience in the industry and such are protected by the copyright laws of the United States Government. Reproduction of any of the above without written permission to do so by **NESPA ENTERPRISES INC.**, is illegal.

**NESPA ENTERPRISES INC.**  
2800 Richter Ave. Ste. C Oroville, CA 95966  
Office: (530) 534-9910 Fax: (530) 534-9915  
E-Mail: [jim@tiledspas.com](mailto:jim@tiledspas.com) Web Site: [www.tiledspas.com](http://www.tiledspas.com)

If printing as a PDF: SCALE: N/A DWG TYPE: Light Detail  
DWG NAME: 217 E 8TH ST LA DATE: 12/15/2014 SHEET: PAGE 10 OF 12

# BONDING DETAIL

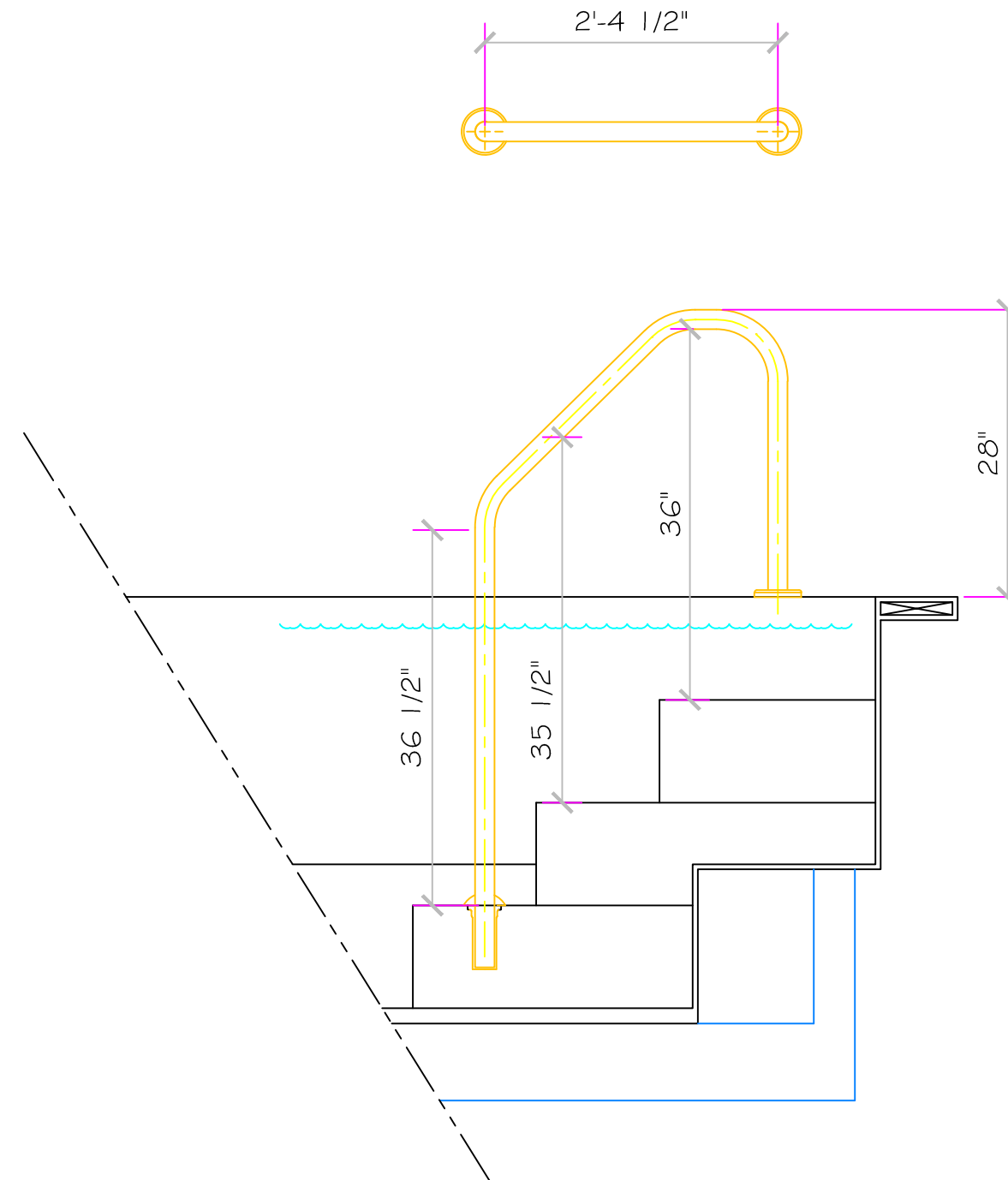


## SUBMITTAL

These drawings, concepts, and details contained herein are the original proprietary designs of **NESPA ENTERPRISES INC.**, developed over many years of experience in the industry and such are protected by the copyright laws of the United States Government. Reproduction of any of the above without written permission to do so by **NESPA ENTERPRISES INC.**, is illegal.

**NESPA ENTERPRISES INC.**  
2800 Richter Ave. Ste. C Oroville, CA 95966  
Office: (530) 534-9910 Fax: (530) 534-9915  
E-Mail: [jim@tiledspas.com](mailto:jim@tiledspas.com) Web Site: [www.tiledspas.com](http://www.tiledspas.com)

If printing as a PDF: SCALE: N/A DWG TYPE: Bonding Detail  
DWG NAME: 217 E 8TH ST LA DATE: 12/15/2014 SHEET: PAGE 11 OF 12



## SUBMITTAL

These drawings, concepts, and details contained herein are the original proprietary designs of **NESPA ENTERPRISES INC.**, developed over many years of experience in the industry and as such are protected by the copyright laws of the United States Government. Reproduction of any of the above without written permission to do so by **NESPA ENTERPRISES INC.**, is illegal.

**NESPA ENTERPRISES INC.**  
2800 Richter Ave. Ste. C Oroville, CA 95966  
Office: (530) 534-9910 Fax: (530) 534-9915  
E-Mail: [jim@tiledspas.com](mailto:jim@tiledspas.com) Web Site: [www.tiledspas.com](http://www.tiledspas.com)

If printing as a PDF: SCALE: 3/4" = 1' DWG TYPE: Handrail Detail  
DWG NAME: 217 E 8TH ST LA DATE: 3/3/2015 SHEET: PAGE 12 OF 12



# STANDARD NESPA IN-GROUND INSTALLATION *INSTRUCTIONS* **SET-UP AND EXCAVATION**

**Prerequisites:** Before installing your Nespa spa. You may be required to acquire a permit from your local State, County, and City building dept and or Health department. (Commercial jobs need Health Dept. Approval). Your spa installation must comply with the most current codes. ( **Uniform Swimming Pool, Spas & Hot Tub Code 2006 ( USPC 2006)**).

**Spa drawings:** Request from Nespa a current spa specific construction detail, plan and section, spa plumbing detail.

**Delivery Access:** Clearly determine the method of getting the spa to jobsite and into the hole. This may require the use of a crane, forklift, hoist, backhoe and/or manpower etc.

- 1) The following instructions are general guidelines and may not apply to your specific jobsite conditions. When excavating for your spa remember to provide for plumbing and light connection clearances. In order to determine how to excavate for your spa or swim spa, measure spas outside dimension ( O.D.) and add minimum 3” to all sides. This 3” clearance is to accommodate jet and suction plumbing. This 3” clearance can change or be reduced upon request. Note: skimmer location, this area may have to be larger than 3”, if commercial 22”.
- 2) **Freeze Climates-** If the spa is place into a vault (typical of freeze climates) a standard 18” or more of clearance minimum from spa perimeter should be provided. This dead air space is for possible future access to spa plumbing in case of a freeze. Area drain is mandatory. **Ask your local installer** for his experienced opinion. Do not hesitate to call us because we want to be sure that your installation progresses as smoothly as possible. If you have questions call us. (888) 479-4677.
- 2) **Hole depth** is determined by spa’s outside height dimension. This height may vary depending if spa has skids or no skids. The spa lip may be finished or non- finished. How is the perimeter deck elevation transitioning to the spa? Focus on the finish surrounding deck elevations, thickness of the finish material on spa upper horizontal lip, equal to lip or under the spa lip. This material can be tile, stone, concrete or brick.
- 3) **Preplumb** the spa before it goes into the hole. If there are needs for electrical , bonding or control conduits run them as well before dropping in hole. Connect bond wire to niche would be best.
- 4) **Spa should sit on level 3 ½” thick reinforced concrete pad. Sweep debris off pad prior to dropping in hole.**
- 5) **Install spa** into the hole on top of concrete pad. Use the Eye bolts provided for crane, forklift etc. rigging. Do not hold onto pipes. Use caution with suction and jet plumbing when lowering into hole. **DO NOT STRESS FITTINGS!** Fill Spa with water and check for leaks prior to backfill.

- 6) **Check site reference** points for proper spa positioning (i.e., squaring to house, garage, etc.).
- 7) **Shim to level spa.** Shim with non-compression able material. Re square to house, or ref. point.
- 8) **Dry pack** with cement the gaps that have been created when shimming spa level.
- 9) **Connect pipes to tees** if spa is preplumb. Installers properly support your new plumbing from stressing spas preplumb fittings. After electrical conduit and bond wire is connected to light niche, water test spa before back filling with sand.  
**NOTE: All Nespa products are water tested prior to leaving factory.**

### **ELECTRICAL:**

- 1) All electrical connections to spa or equipment should comply with the most recent national electrical code (NEC), state and local codes.
- 2) Connect electrical conduit to light niche. This work should be done or reviewed by a licensed electrician.
- 3) To install spa light you will need to include inside the PVC conduit to the light niche a solid #8 coated copper wire. (If you are use brass conduit, internal bond wire is not required.) This bond wire should be pulled with the light cord at the same time. This bond wire needs to be attached to the internal bonding lug of the light niche. An approved encapsulate should be applied to bond wire connection in niche.
- 4) An external #8 copper wire shall be connected to the external bonding lug on the rear of the light niche. This copper wire can then be used for additional bonding requirements (i.e., handrails or any other metallic object within 5' of the spa.

### **PLUMBING:**

- 1) **When plumbing a Nespa it is important to properly size the plumbing. We highly recommend that you follow the pump manufacturer's pipe sizing requirements and Uniform Swimming Pool, Spas & Hot Tub Code 2006 ( USPC 2006). This code book is available at [www.IAPMO.org](http://www.IAPMO.org) or (909) 472 4100.**
- 2) The jet air venturi should be a Hartford loop design adjacent to spa shell and air entry point can be located next to spa or remotely at equipment.
- 3) Fill spa with water and test the system for leaks PRIOR to backfilling with sand.

### **SAND BACK FILL:**

- 1) **With water in spa, back-fill around spa perimeter with dry plaster sand and wet wash with hydraulic attachment to hose. Let set for one hour and hydraulic dry again. Be sure water level in spa is at the highest level. Any questions please call us. ( 888) 479-4677.**
- 2) **If spa is free standing on elevated deck or a structure, it is important to fill spa with water and load area prior to installing coping or perimeter decking. If spa is installed in a vault situation a area drain is needed.**

# NESPA ENTERPRISES INC.

2800 Richter Ave. Suite E

Oroville, CA 95966

Office: (888) 479-4677 Fax: (530) 534-9915

E-Mail: nespa@pacbell.net www.tiledspas.com

## IN-GROUND

## INSTALLATION

\*ALL DIMENSIONS SUBJECT TO 1/4" TOLERANCES\*

SCALE: 1/2" = 1'-0"

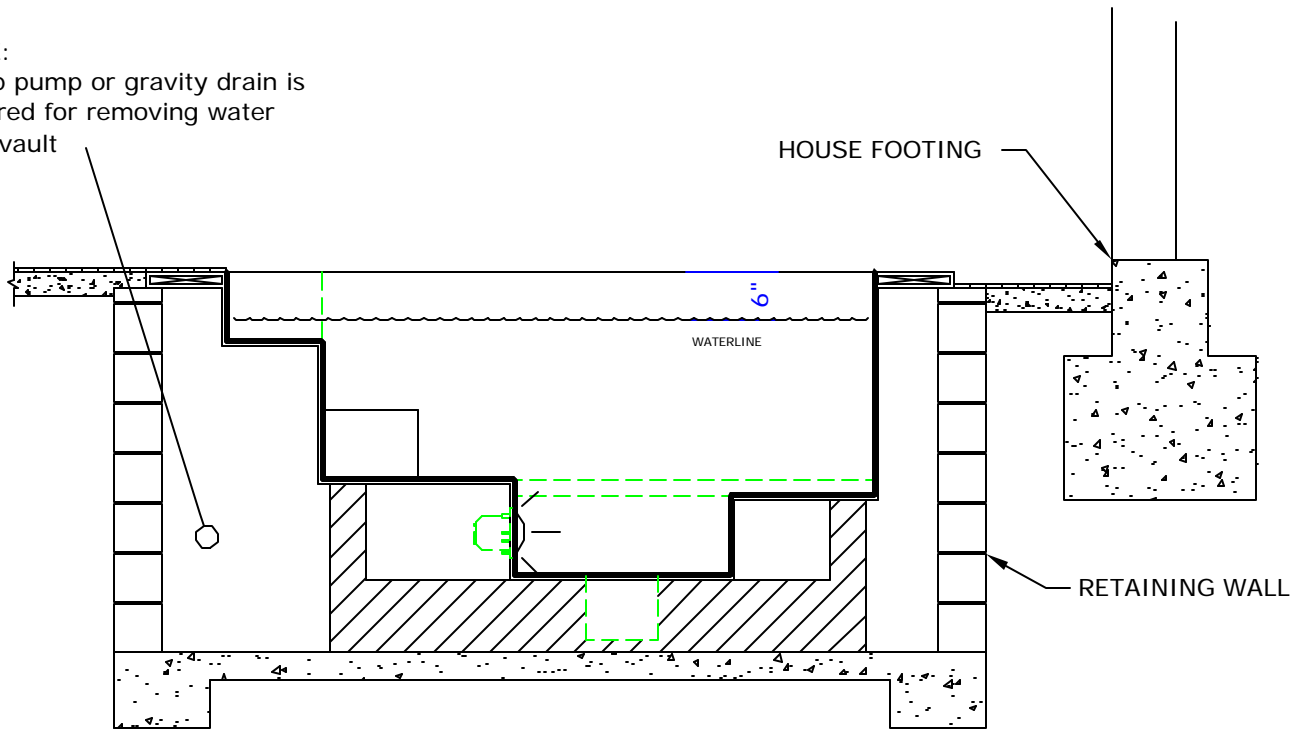
DATE: 3/27/02

JOB : STANDARD INSTALL

DW #: SI-1, SI-2

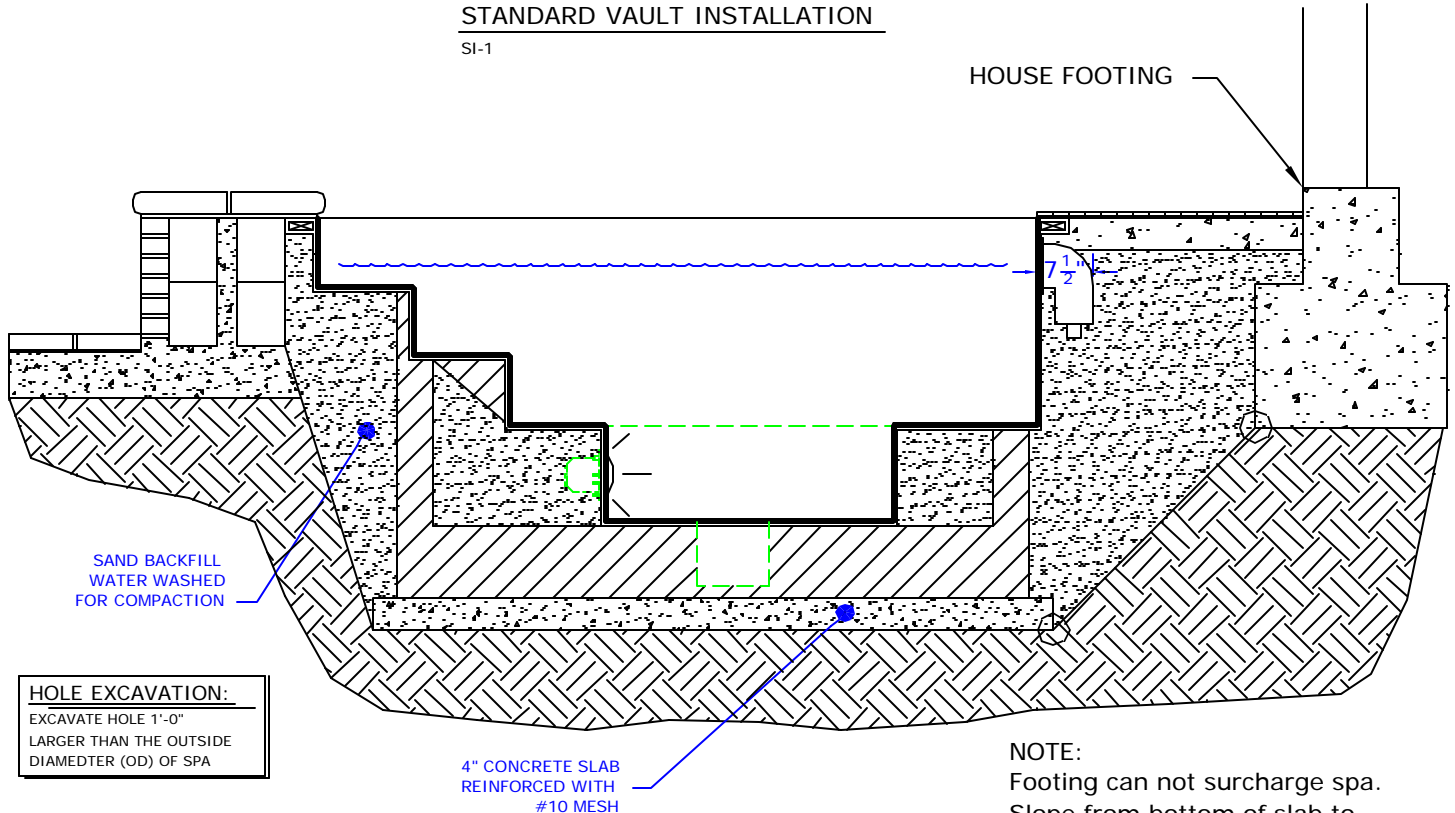
### NOTE:

Sump pump or gravity drain is required for removing water from vault



STANDARD VAULT INSTALLATION

SI-1



### HOLE EXCAVATION:

EXCAVATE HOLE 1'-0"  
LARGER THAN THE OUTSIDE  
DIAMETER (OD) OF SPA

4" CONCRETE SLAB  
REINFORCED WITH  
#10 MESH

STANDARD INGROUND INSTALLATION

SI-2

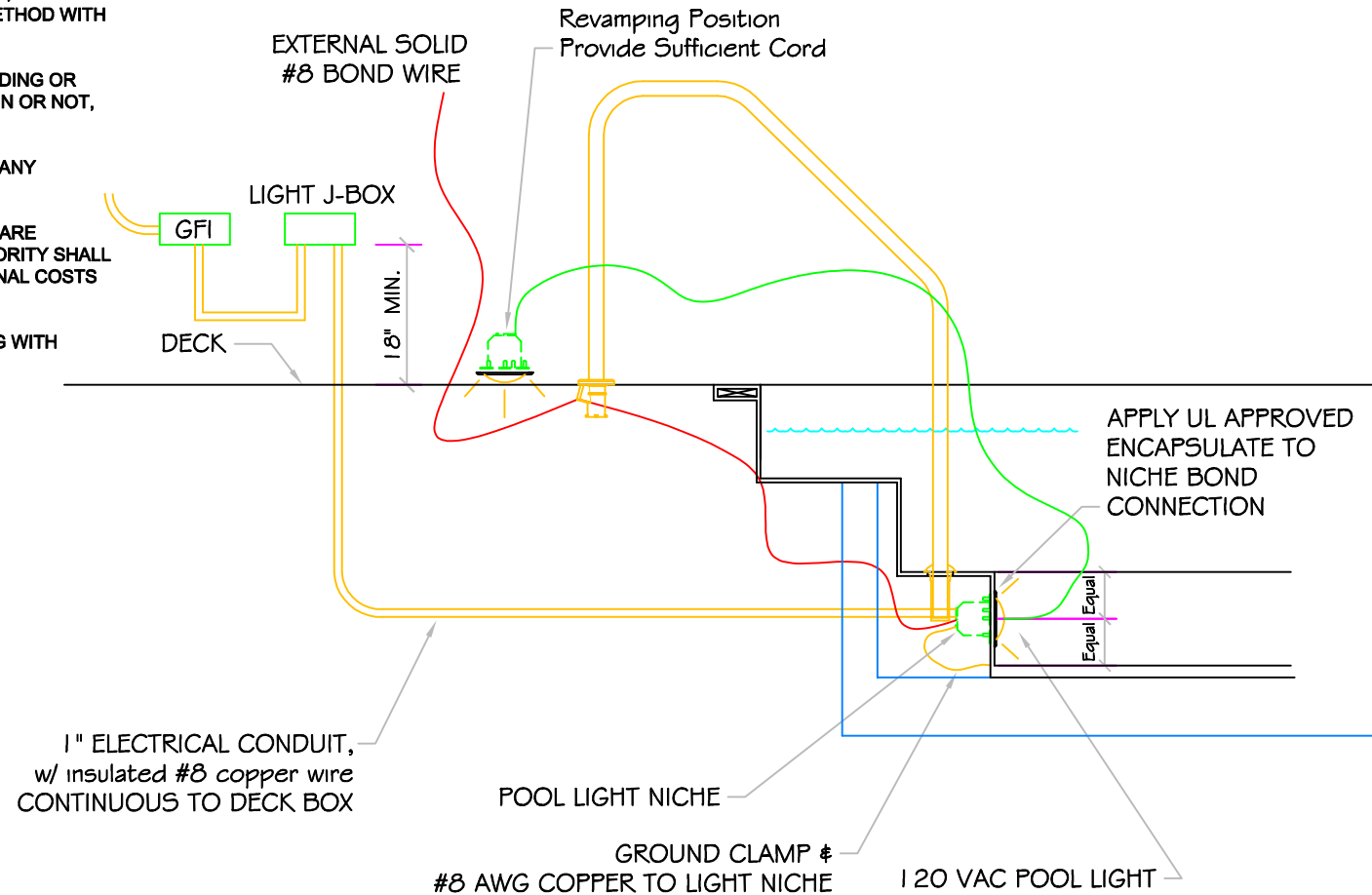
### NOTE:

Footing can not surcharge spa.  
Slope from bottom of slab to  
nearest corner of house footing  
must not exceed 1" = 1".

## POOL BONDING REQUIREMENTS:

1. THE FOLLOWING PARTS SHALL BE BONDED TOGETHER AND CONNECTED TO THE COMMON BONDING GRID.
  - A. ALL THE METALLIC PARTS OF THE POOL STRUCTURE INCLUDING COPYING STONES, DECK, PERMANENT PLAY STRUCTURES, PERMANENT EXERCISE STRUCTURES.
  - B. ALL METAL FITTINGS WITHIN OR ATTACHED TO THE POOL STRUCTURE
  - C. METAL PARTS ASSOCIATED WITH THE POOL WATER CIRCULATING SYSTEM, INCLUDING PUMPS, FILTERS, AND HEATERS.
  - D. METAL PARTS ASSOCIATED WITH POOL COVERS
  - E. METAL SHEATHED CABLES AND RACEWAYS, METAL PIPING AND ALL FIXED METAL PARTS WITHIN 5 FEET HORIZONTALLY OF INSIDE WALLS OF POOL AND WITHIN 12 FEET ABOVE MAXIMUM WATER LEVEL OF POOL.
  - F. METAL PARTS ASSOCIATED WITH OBSERVATION STANDS, TOWERS, PLATFORMS, AND DIVING STRUCTURES.
2. BONDING CONDUCTORS SHALL BE MINIMUM #8 SOLID COPPER, INSULATED E.C. SHALL COORDINATE APPROVED CONNECTOR TYPE AND METHOD WITH LOCAL ELECTRICAL AND/ OR POOL INSPECTOR.
3. SPECIFIC MANUFACTURER'S INSTRUCTIONS REGARDING BONDING OR GROUNDING OF POOL EQUIPMENT, WHETHER INDICATED HEREIN OR NOT, SHALL BE STRICTLY FOLLOWED.
4. THE COMMON BONDING GRID SHALL NOT BE CONNECTED TO ANY ELECTRICAL DISTRIBUTION EQUIPMENT.
5. ANY PARTS IN ADDITION TO THOSE DESCRIBED HEREIN THAT ARE INDICATED BY POOL CONTRACTOR OR LOCAL INSPECTION AUTHORITY SHALL BE BONDED TO THE COMMON BONDING GRID WITH NO ADDITIONAL COSTS INCURRED BY THE OWNER.
6. THE ELECTRICAL CONTRACTOR SHALL COORDINATE BONDING WITH GENERAL CONTRACTOR.

## LIGHT DETAIL



\*ALL DIMENSIONS SUBJECT TO 1/4" TOLERANCES\*

These drawings, concepts, and details contained herein are the original proprietary designs of NESPA ENTERPRISES, developed over many years of experience in the pool and spa industry and as such are protected by the copyright laws of the United States Government. Reproduction of any of the above without written permission to do so by NESPA ENTERPRISES, is illegal.

**NESPA ENTERPRISES INC.**  
2800 Richter Ave. Ste. C Oroville, CA 95966  
Office: (530) 534-9910 Fax: (530) 534-9915  
E-Mail: [sales@tiledspas.com](mailto:sales@tiledspas.com) Web Site: [www.tiledspas.com](http://www.tiledspas.com)



SIZE	DWG NAME	DWG TYPE
A	DETAILS	Detail
SCALE 1/2" = 1'	DATE 7/24/2008	SHEET PAGE 1 OF 1

## **NESPA ENTERPRISES, Inc. LIMITED WARRANTY**

**This LIMITED WARRANTY covering NESPA products is extended to the ORIGINAL PURCHASER-USER BY NESPA ENTERPRISES Inc.(NESPA), 2800 Richter Ave. Unit C California 95966.**

**NESPA products are thoroughly inspected and tested prior to factory shipment. NESPA warrants to the ORIGINAL PURCHASER-USER that NESPA Spas and Swim Spas will be free of defect in workmanship, accessories and parts, provided said accessories and parts were manufactured by NESPA. NESPA, under this LIMITED WARRANTY, warrants only that its Spas and Swim Spas shall be structurally sound, shall retain their shape, and shall retain water for the warranty period. NESPA warrants the adhesion of tile to fiberglass for a period of three (3) years and structural soundness for ten (10) years. NESPA warrants epoxy grout adhesion for a period of three years. If any such defects appear and are reported within the warranty period, NESPA shall repair or replace such defective parts without charge if an inspection proves the claim.**

**The provisions of the LIMITED WARRANTY shall not apply to tile cracked, split, chipped or damaged after the product has left the factory, nor damage to tile caused by freezing nor to damage, defect, malfunction or failure to conform with the above warranty provisions where the damage, defect, malfunction or failure to conform was caused during shipment or by distributor or by unreasonable use by ORIGINAL PURCHASER-USER including improper water balance and improper sand pack or support.**

**This LIMITED WARRANTY shall not apply to any plumbing, equipment, or installation of spas and Swim Spas and shall not apply to any alterations made to or upon NESPA products except alterations made by NESPA employees or NESPA authorized representatives.**

**This LIMITED WARRANTY is expressly in lieu of all other warranties expressed or implied including the warranties of merchantability and fitness for use and all other obligations or liabilities on NESPA'S part, and NESPA neither assumes nor authorizes any other person to assume for NESPA any other liability in connection with the sale of this NESPA product. This LIMITED WARRANTY shall not apply to this NESPA product or any part thereof which has been subject to accident, negligence, alteration, abuse or misuse. NESPA makes no warranty whatsoever with respect to accessories or parts not manufactured by NESPA.**

**The term "ORIGINAL PURCHASER-USER" as used in this LIMITED WARRANTY shall be deemed to mean that person for whom the NESPA product is originally installed.**

**The LIMITED WARRANTY provided herein and the obligations and liabilities of NESPA hereunder are exclusive and are in lieu of, and buyer and original PURCHASE-USER hereby waive all other remedies, warranties, guarantees or liabilities, expressed or implied, arising by law or otherwise (including without limitation and obligations of NESPA with respect to fitness, merchantability, and consequential damages) or whether or not occasioned by NESPA'S negligence.**

**This LIMITED WARRANTY shall not be extended, altered or varied except by a written instrument signed by NESPA and original PURCHASER-USER.**