



NESPA
TILED SPAS

Production Booklet

""for

: 47'G06VJ 'U0SPA

2800 Richter Ave. Suite C, Oroville, CA 95965 • **voice:** (530)534-9910
fax: (530)534-9915 • **email:** sales@tiledspas.com • **website:** www.tiledspas.com



RECOMMENDED MAINTENANCE

Please Note:

These are only recommended guidelines to care for a Nespa all tiled spa. Local codes may require additional procedures, therefore consult with a pool professional that is LA county Health Department certified for more information on local codes and requirements.

SPA SURFACE

Your spa tile is acid resistant and frost-proof. The Tile does not absorb germs or algae. Tile does not stain and is very easy to clean. Color does not fade or lose its luster. All grouts are epoxy based and are extremely durable. To remove scum line use soft nylon brush and small amounts of biodegradable soaps. Do not use abrasive brushes or chemicals.

MAINTENANCE

A. CHEMICALS:

- 1) It is important to maintain a chlorine residual of 2 PPM in the spa. That residual can be provided by chlorine or bromine.
- 2) It is recommended to use Bromine or dichlor (granular) forms of chlorine. If bromine Tabs are used we suggest floating or inline dispenser.
- 3) Never use acid to lower Ph in the tile spa.
- 4) Never use trichlor chlorine (1" or 3") tablets in the Nespa spas.
- 5) Never place tablets in skimmer basket.

B. DRAINING THE SPA:

- 1) It is recommended to drain the spa at least once every 2 months depending on bath load and water clarity.
- 2) The spa should be drained through valve exiting re-circulation pump in the spa equipment room or sump pump.
- 3) Note: Use caution to drain spa in the winter months or rainy season when water table is at its highest. It is possible for the spa to float due to hydraulic pressure from surrounding water table. We advise that you consult with your local spa specialist prior to draining the spa.

C. SPA EQUIPMENT:

- 1) Clean filter cartridge at least once every month, or when needed; i.e., if water clarity does not improve after several days.
- 2) Keep area free and clear from leaves and debris build-up.
- 3) Keep area free and clear from flooding.

D. SPA LIGHT:

- 1) Spa light has to be on GFCI circuit. It is controlled at spa side with ON/OFF.

E. TILE SERVICING:


- 1) Contact manufacture when servicing tile or grout. @ (530) 534-9910


SPECIFICATIONS	
SHELL WEIGHT:	2000 LBS.
WATER WEIGHT:	7421 LBS.
TOTAL SHELL & WATER WEIGHT:	9420.9 LBS.
WATER VOLUME:	119 Cu.Ft.
WATER GALLONS:	890 GAL.
SURFACE AREA:	56.3 SQ. FT.
IAPMO#:	1138
FDA#:	2030305

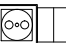
SKID SUPPORT STRUCTURE* BONDED TO SPA


*SKIDS SUPPLIED BY NESPA


LIGHT NICHE
 SPA BRIGHT, 120 V, 100 WATT, 50' CORD, U.L. APPROVED


MAIN DRAIN
 6" Round Hockey Puck AquaStar 6HPHAxxx Sumpless Suction Outlet Floor/Wall 224 GPM @ 6.3fps Complies w/ ANSI Code ASME A112.19.8-2007 & VGB 2008

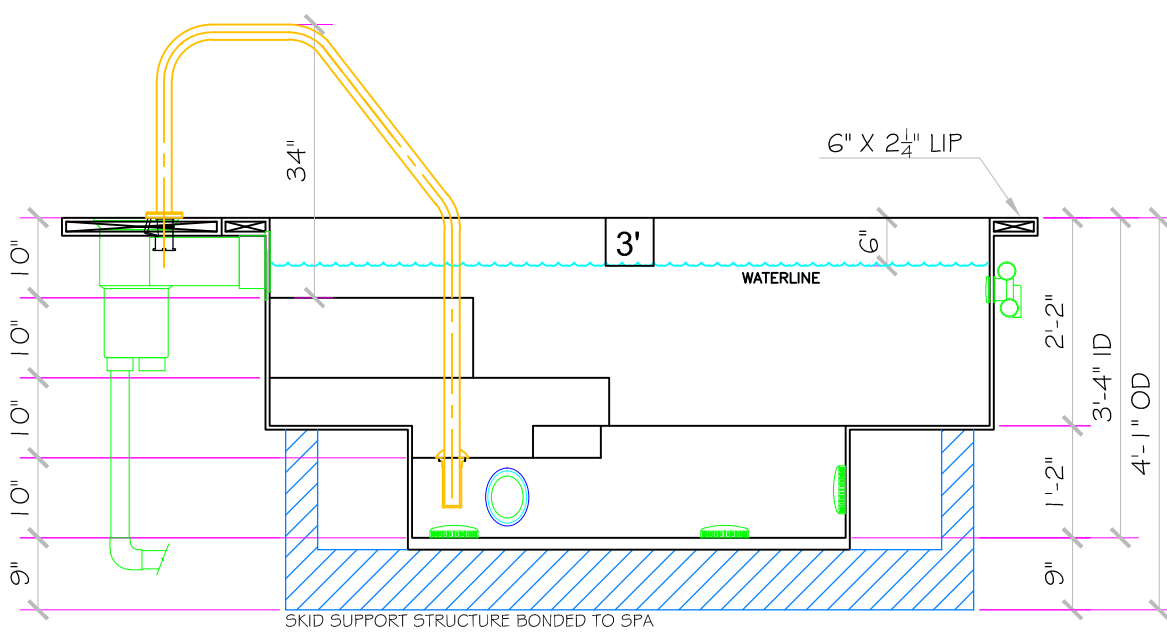
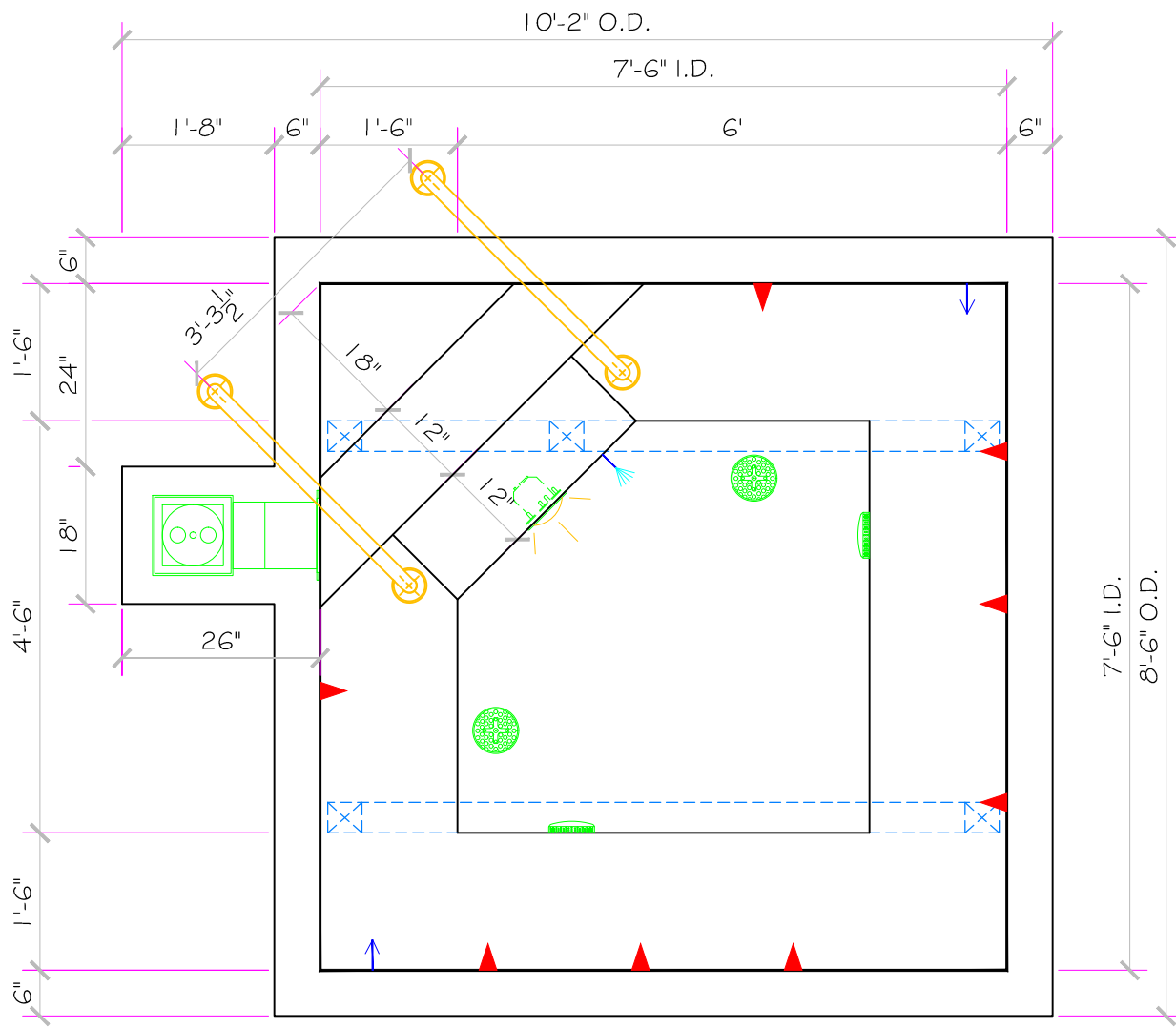
SIDEWALL SUCTION
 6" Round Hockey Puck AquaStar 6HPHAxxx Sumpless Suction Outlet Floor/Wall 224 GPM @ 6.3fps Complies w/ ANSI Code ASME A112.19.8-2007 & VGB 2008

SKIMMER
 HAYWARD SP-1084FVE SURFACE SKIMMER W/ EQUALIZER, NSF APPROVED

JET
 HYDRO INLETS 1-1/2" WATER - 1-1/2" AIR HYDROAIR #10-5100 COMPLIES W/ ANSI CODE ASME A112.19.8-07 U.L. APPROVED

RETURN
 INLET FITTINGS 1-1/2" WALL TYPE W/ EYEBALL HYDROAIR #10-3500 COMPLIES W/ ANSI CODE ASME A112.19.8-07 U.L. APPROVED

FILL
 INLET FITTINGS 1-1/2" WALL TYPE W/ EYEBALL HYDROAIR #10-3500 COMPLIES W/ ANSI CODE ASME A112.19.8-07 U.L. APPROVED



APPROVED

ALL DIMENSIONS SUBJECT TO 1/4" TOLERANCES

NESPA ENTERPRISES INC.
 2800 Richter Ave. Suite C Oroville, CA 95966
 Office: (530) 534-9910 Fax: (530) 534-9915
 E-Mail: sales@tiledspas.com Web Site: www.tiledspas.com



DWG NAME	825 E 4TH ST	DWG TYPE	SD
SCALE	1/2" = 1'	DATE	1/11/2012

SHEET	PAGE 1 OF 8
-------	-------------

These drawings, concepts, and details contained herein are the original proprietary designs of NESPA ENTERPRISES, developed over many years of experience in the pool and spa industry and as such are protected by the copyright laws of the United States Government. Reproduction of any of the above without written permission to do so by NESPA ENTERPRISES, is illegal.

- #1 - FIELD TILE: Slip-resistant 2"x 2" Dal Tile Arctic White D617
- #2 - WATERLINE (optional): Dal Tile 2 X 2 smooth glossy TBD contrast color
- #3 - BENCH & STEP EDGES (optional): Dal Tile 2 X 2 smooth glossy TBD contrast color
- #4 - TILED LIP (optional): Dal Tile - C701 - Arctic White D617

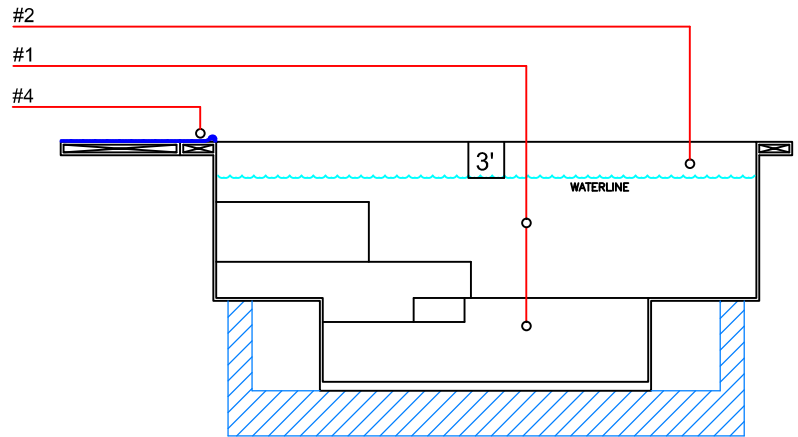
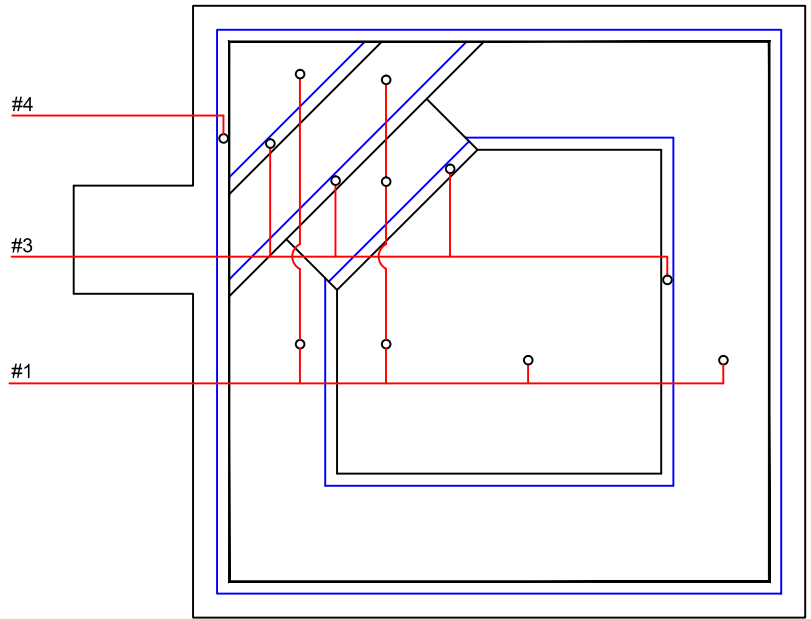
Date: _____

Approval: _____

#1 - GROUT: _____

#2 - GROUT: _____

#3 - GROUT: _____



APPROVED

ALL DIMENSIONS SUBJECT TO 1/4" TOLERANCES

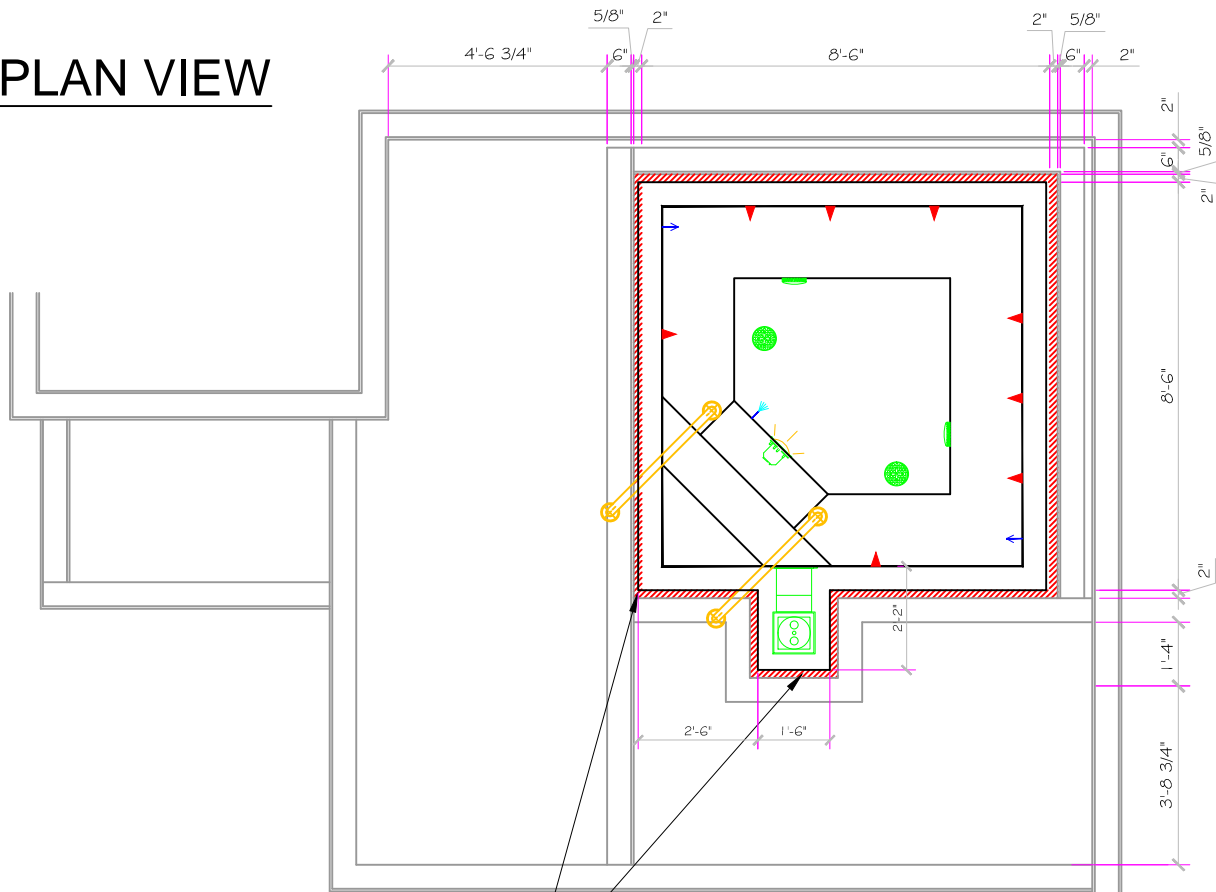
NESPA ENTERPRISES INC.
 2800 Richter Ave. Suite C Oroville, CA 95966
 Office: (530) 534-9910 Fax: (530) 534-9915
 E-Mail: sales@tiledspas.com Web Site: www.tiledspas.com



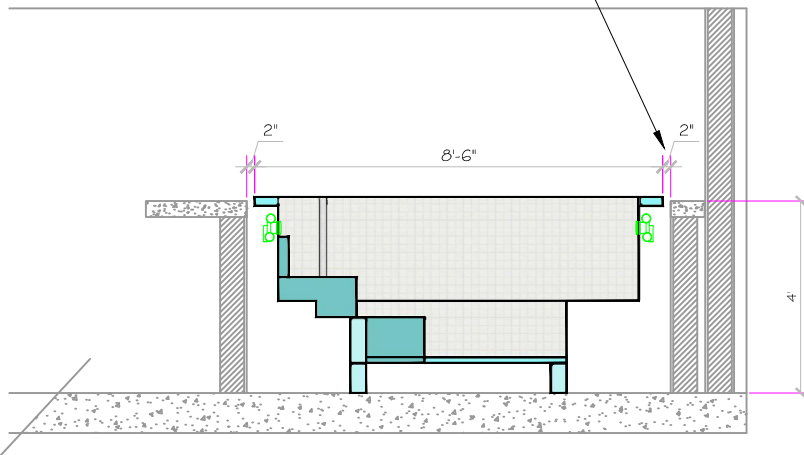
DWG NAME	825 E 4TH ST	DWG TYPE	Tile
SCALE	3/8" = 1'	DATE	12/6/2011
		SHEET	PAGE 2 OF 8

These drawings, concepts, and details contained herein are the original proprietary designs of NESPA ENTERPRISES, developed over many years of experience in the pool and spa industry and as such are protected by the copyright laws of the United States Government. Reproduction of any of the above without written permission to do so by NESPA ENTERPRISES, is illegal.

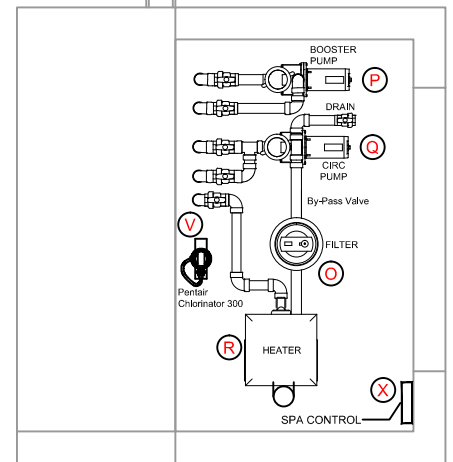
PLAN VIEW



Leave 2" gap clear around spa perimeter
Vault I.D. = 8' 10" x 8' 10"



SECTION VIEW



APPROVED

ALL DIMENSIONS SUBJECT TO 1/4" TOLERANCES

NESPA ENTERPRISES INC.

2800 Richter Ave. Suite C Oroville, CA 95966

Office: (530) 534-9910 Fax: (530) 534-9915

E-Mail: sales@tiledspas.com Web Site: www.tiledspas.com



DWG NAME

825 E 4TH ST

DWG TYPE

Spa Layout

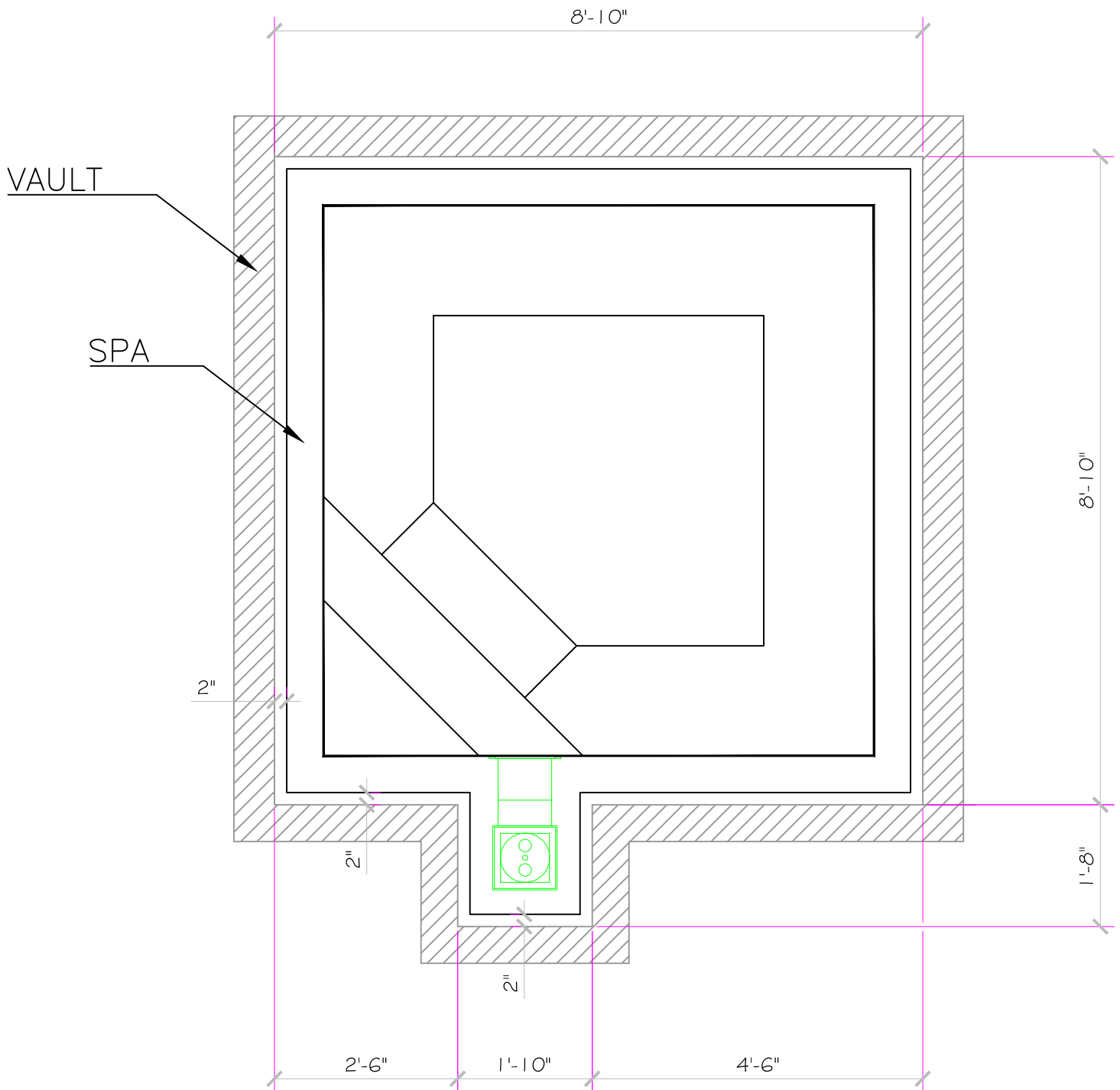
SCALE 1/4" = 1'

DATE 1/11/2012

SHEET

PAGE 3 OF 8

These drawings, concepts, and details contained herein are the original proprietary designs of NESPA ENTERPRISES, developed over many years of experience in the pool and spa industry and as such are protected by the copyright laws of the United States Government. Reproduction of any of the above without written permission to do so by NESPA ENTERPRISES, is illegal.



APPROVED

ALL DIMENSIONS SUBJECT TO 1/4" TOLERANCES

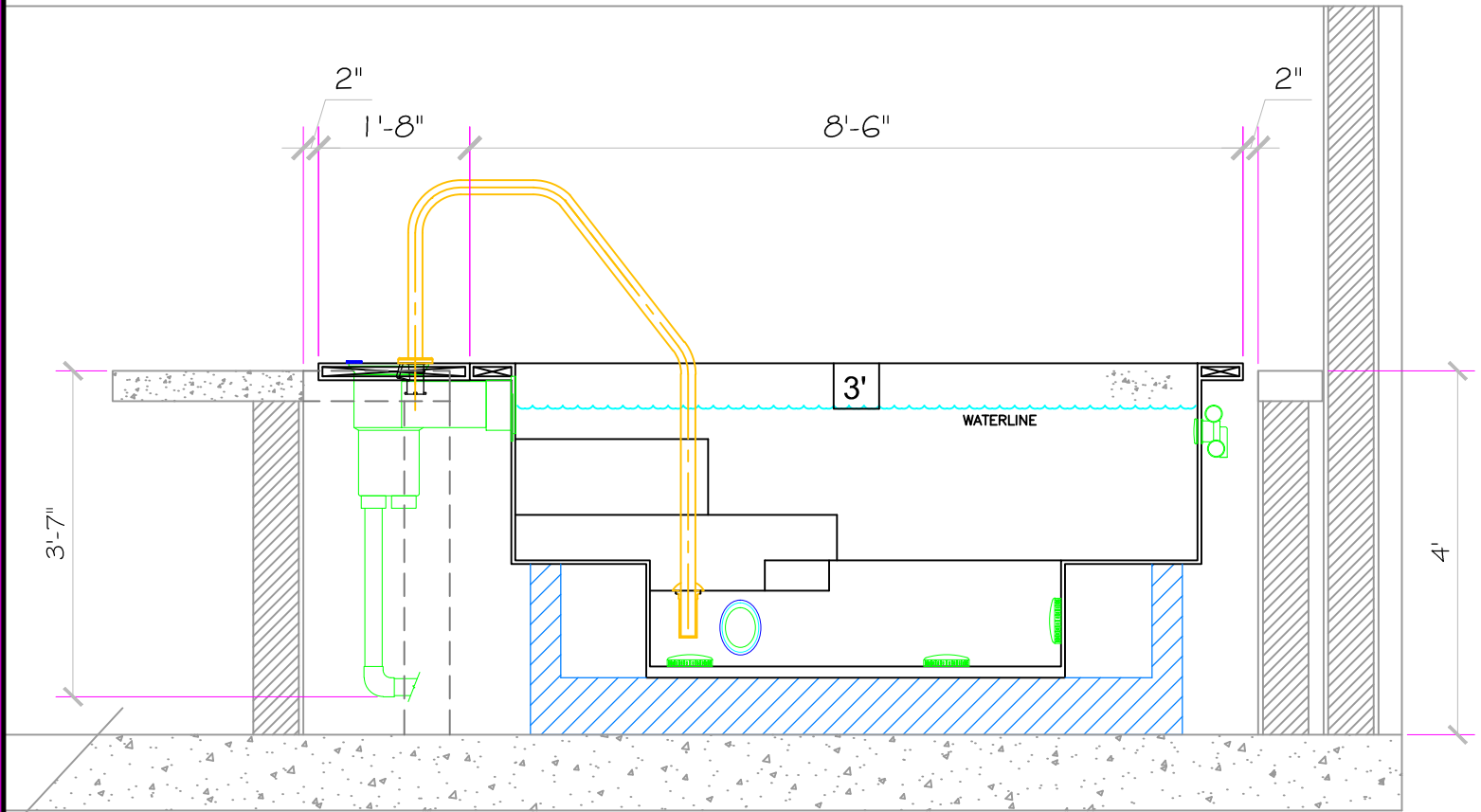
NESPA ENTERPRISES INC.
 2800 Richter Ave. Suite C Oroville, CA 95966
 Office: (530) 534-9910 Fax: (530) 534-9915
 E-Mail: sales@tiledspas.com Web Site: www.tiledspas.com



DWG NAME **825 E 4TH ST**
 SCALE **1/2" = 1'** DATE **1/11/2012**

DWG TYPE **Spa Layout**
 SHEET **PAGE 3a OF 8**

These drawings, concepts, and details contained herein are the original proprietary designs of NESPA ENTERPRISES, developed over many years of experience in the pool and spa industry and as such are protected by the copyright laws of the United States Government. Reproduction of any of the above without written permission to do so by NESPA ENTERPRISES, is illegal.



APPROVED

ALL DIMENSIONS SUBJECT TO 1/4" TOLERANCES

NESPA ENTERPRISES INC.
 2800 Richter Ave. Suite C Oroville, CA 95966
 Office: (530) 534-9910 Fax: (530) 534-9915
 E-Mail: sales@tiledspas.com Web Site: www.tiledspas.com



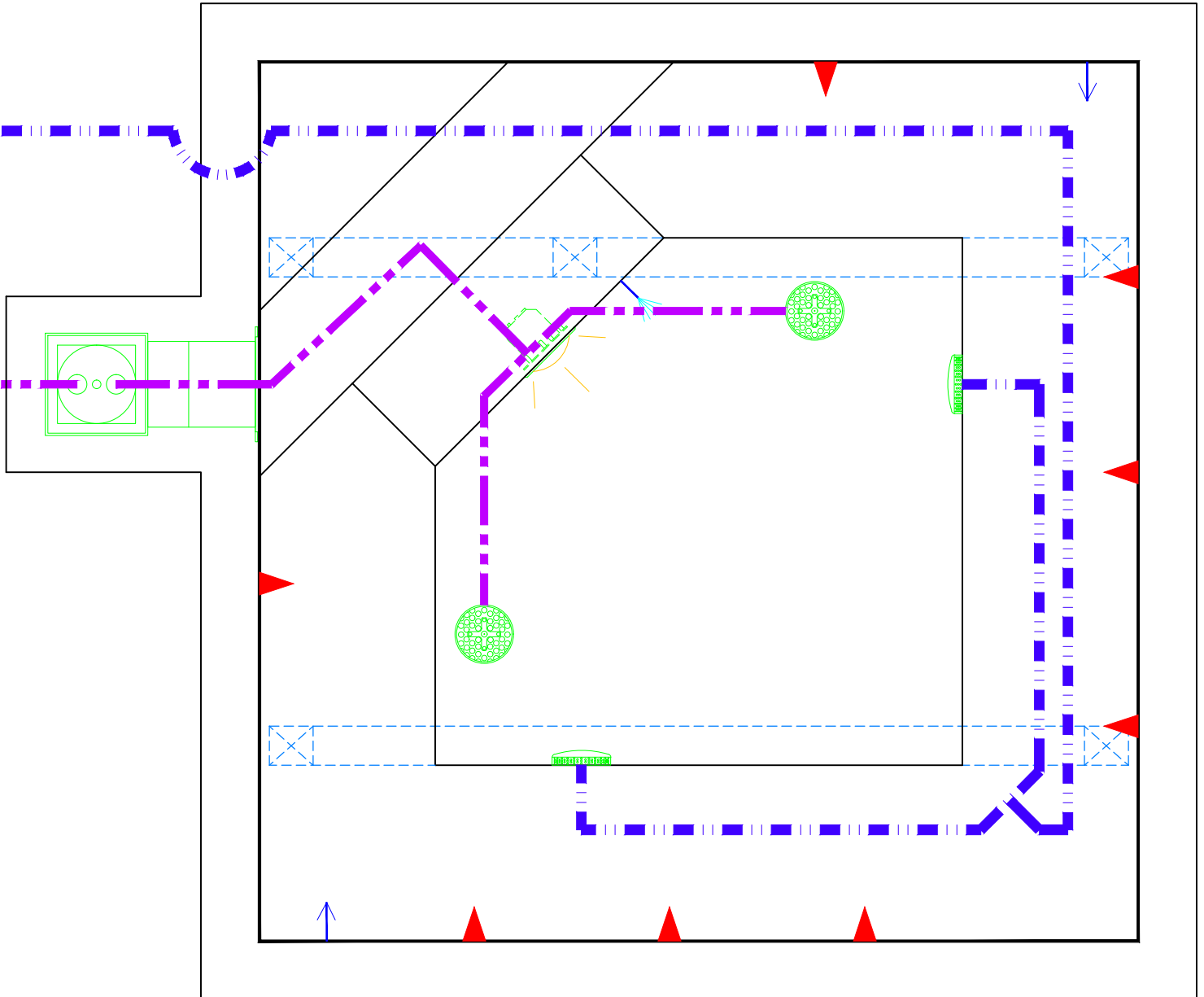
DWG NAME	825 E 4TH ST
SCALE	1/2" = 1'
DATE	1/12/2012

DWG TYPE	Spa Layout
SHEET	PAGE 3b OF 8

These drawings, concepts, and details contained herein are the original proprietary designs of NESPA ENTERPRISES, developed over many years of experience in the pool and spa industry and as such are protected by the copyright laws of the United States Government. Reproduction of any of the above without written permission to do so by NESPA ENTERPRISES, is illegal.

3" Booster Suction

2" Circulation Suction



APPROVED

ALL DIMENSIONS SUBJECT TO 1/4" TOLERANCES

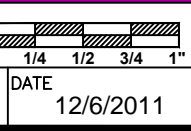
These drawings, concepts, and details contained herein are the original proprietary designs of NESPA ENTERPRISES, developed over many years of experience in the industry and as such are protected by the copyright laws of the United States Government. Reproduction of any of the above without written permission to do so by NESPA ENTERPRISES, is illegal.

NESPA ENTERPRISES INC.
 2800 Richter Ave. Ste. C Oroville, CA 95966
 Office: (530) 534-9910 Fax: (530) 534-9915
 E-Mail: jim@tiledspas.com Web Site: www.tiledspas.com



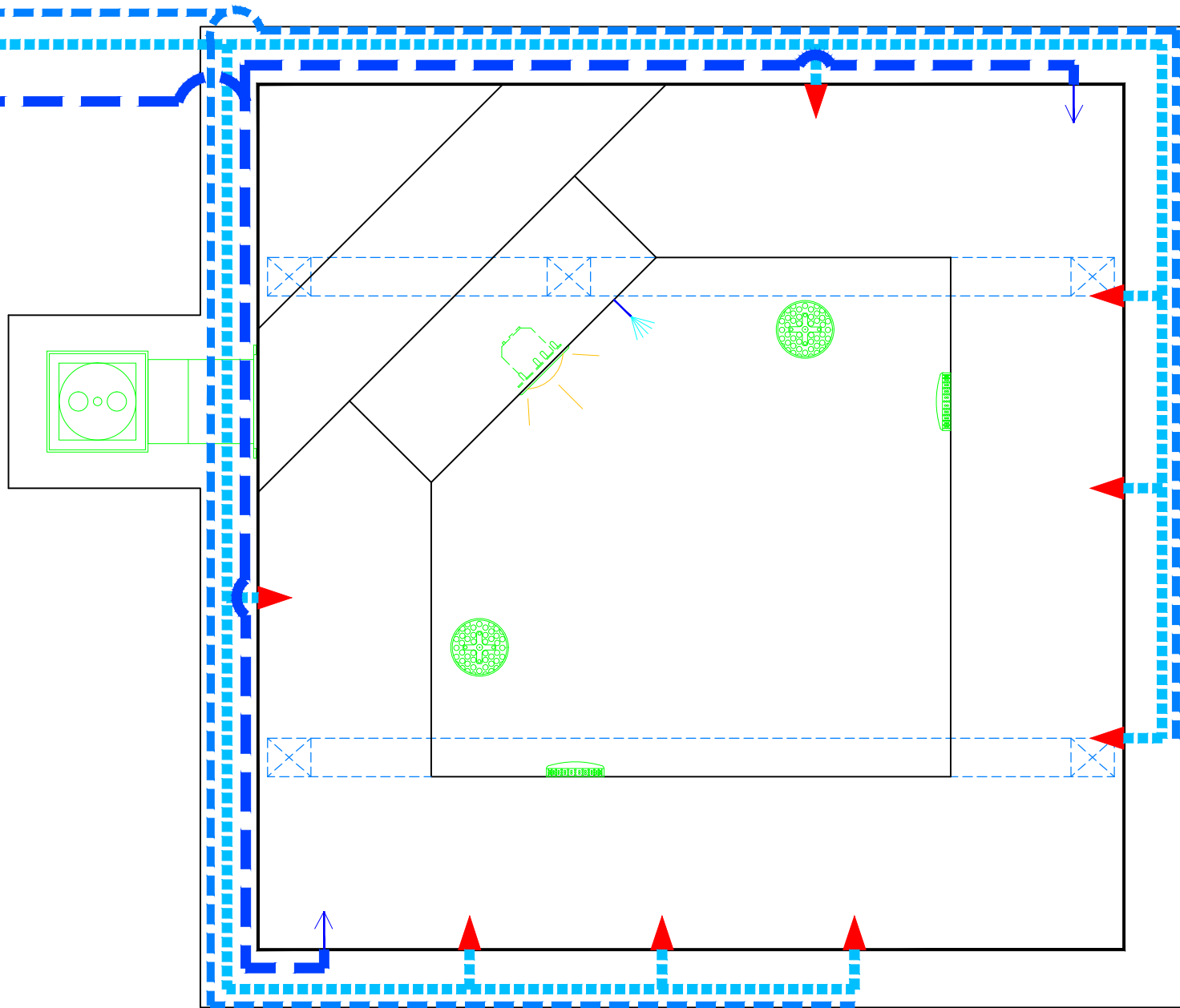
If printing as a PDF:
 Page Scaling:
 DWG NAME 825 E 4TH ST

SCALE
 3/4" = 1'
 DATE
 12/6/2011



DWG TYPE
 Suction Plumbing
 SHEET
 PAGE 4 OF 8

1-1/2" Air Venturi
 3" Booster Return
 2" Circulation Return



APPROVED

ALL DIMENSIONS SUBJECT TO 1/4" TOLERANCES

These drawings, concepts, and details contained herein are the original proprietary designs of NESPA ENTERPRISES, developed over many years of experience in the industry and as such are protected by the copyright laws of the United States Government. Reproduction of any of the above without written permission to do so by NESPA ENTERPRISES, is illegal.

NESPA ENTERPRISES INC.

2800 Richter Ave. Ste. C Oroville, CA 95966

Office: (530) 534-9910

Fax: (530) 534-9915

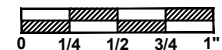
E-Mail: jim@tiledspas.com Web Site: www.tiledspas.com



If printing as a PDF:

Page Scaling:

SCALE
 3/4" = 1'



DWG NAME

825 E 4TH ST

DATE

12/6/2011

DWG TYPE

Return Plumbing

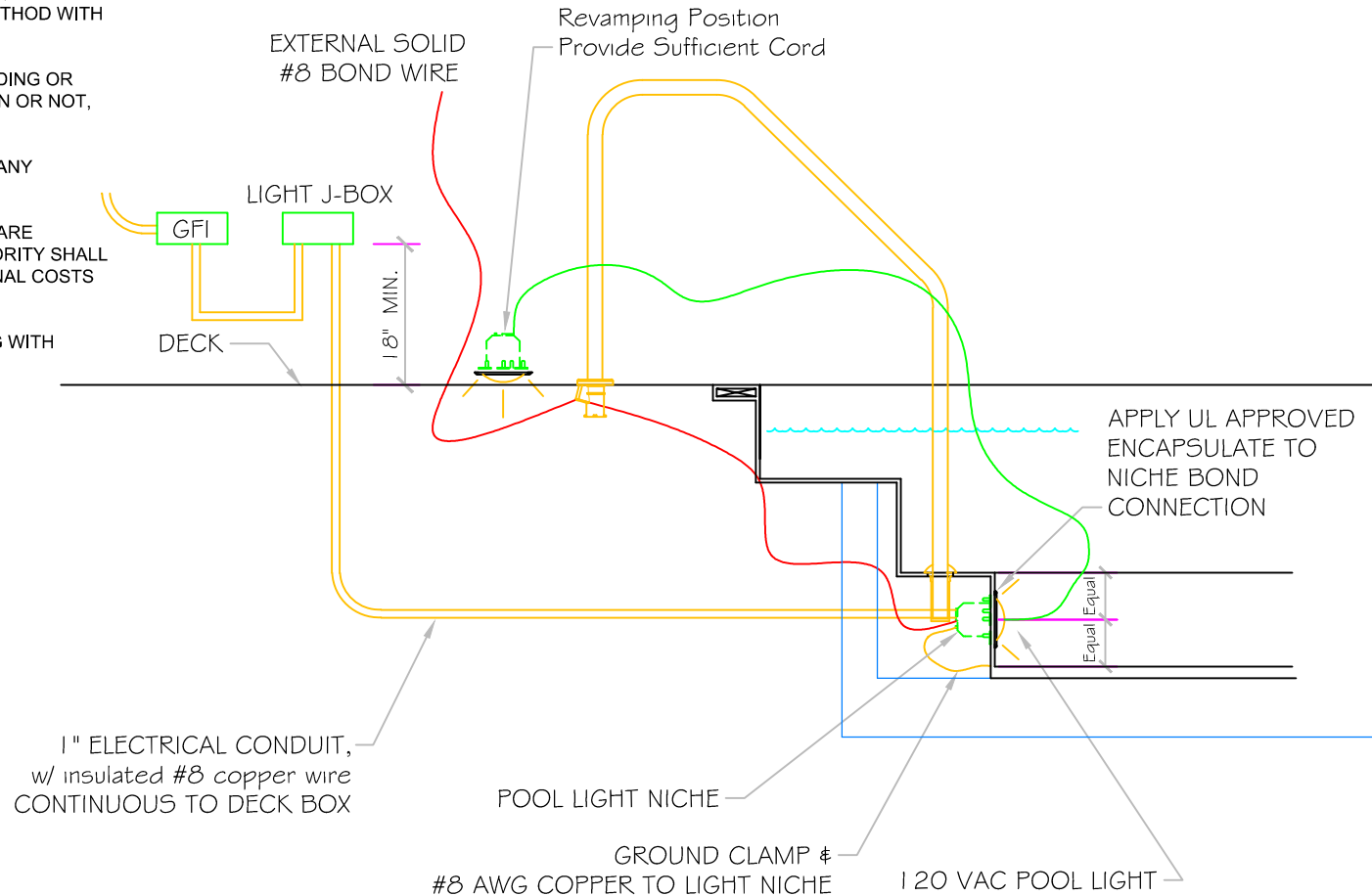
SHEET

PAGE 5 OF 8

POOL BONDING REQUIREMENTS:

1. THE FOLLOWING PARTS SHALL BE BONDED TOGETHER AND CONNECTED TO THE COMMON BONDING GRID.
 - A. ALL THE METALLIC PARTS OF THE POOL STRUCTURE INCLUDING COPPING STONES, DECK, PERMANENT PLAY STRUCTURES, PERMANENT EXERCISE STRUCTURES.
 - B. ALL METAL FITTINGS WITHIN OR ATTACHED TO THE POOL STRUCTURE
 - C. METAL PARTS ASSOCIATED WITH THE POOL WATER CIRCULATING SYSTEM, INCLUDING PUMPS, FILTERS, AND HEATERS.
 - D. METAL PARTS ASSOCIATED WITH POOL COVERS
 - E. METAL SHEATHED CABLES AND RACEWAYS, METAL PIPING AND ALL FIXED METAL PARTS WITHIN 5 FEET HORIZONTALLY OF INSIDE WALLS OF POOL AND WITHIN 12 FEET ABOVE MAXIMUM WATER LEVEL OF POOL.
 - F. METAL PARTS ASSOCIATED WITH OBSERVATION STANDS, TOWERS, PLATFORMS, AND DIVING STRUCTURES.
2. BONDING CONDUCTORS SHALL BE MINIMUM #8 SOLID COPPER, INSULATED E.C. SHALL COORDINATE APPROVED CONNECTOR TYPE AND METHOD WITH LOCAL ELECTRICAL AND/ OR POOL INSPECTOR.
3. SPECIFIC MANUFACTURER'S INSTRUCTIONS REGARDING BONDING OR GROUNDING OF POOL EQUIPMENT, WHETHER INDICATED HEREIN OR NOT, SHALL BE STRICTLY FOLLOWED.
4. THE COMMON BONDING GRID SHALL NOT BE CONNECTED TO ANY ELECTRICAL DISTRIBUTION EQUIPMENT.
5. ANY PARTS IN ADDITION TO THOSE DESCRIBED HEREIN THAT ARE INDICATED BY POOL CONTRACTOR OR LOCAL INSPECTION AUTHORITY SHALL BE BONDED TO THE COMMON BONDING GRID WITH NO ADDITIONAL COSTS INCURRED BY THE OWNER.
6. THE ELECTRICAL CONTRACTOR SHALL COORDINATE BONDING WITH GENERAL CONTRACTOR.

LIGHT DETAIL



NOTE:
All electrical wiring schematics must be reviewed and approved by electrical engineer or licensed electrician for the latest NEC code compliancy.

APPROVED

ALL DIMENSIONS SUBJECT TO 1/4" TOLERANCES

These drawings, concepts, and details contained herein are the original proprietary designs of NESPA ENTERPRISES, developed over many years of experience in the industry and as such are protected by the copyright laws of the United States Government. Reproduction of any of the above without written permission to do so by NESPA ENTERPRISES, is illegal.

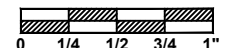
NESPA ENTERPRISES INC.
2800 Richter Ave. Ste. C Oroville, CA 95966
Office: (530) 534-9910 Fax: (530) 534-9915
E-Mail: jim@tiledspas.com Web Site: www.tiledspas.com



If printing as a PDF:

Page Scaling: None

SCALE
1/2" = 1'

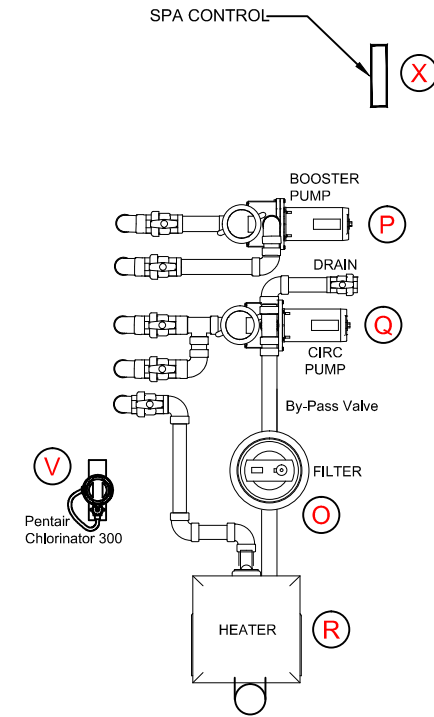
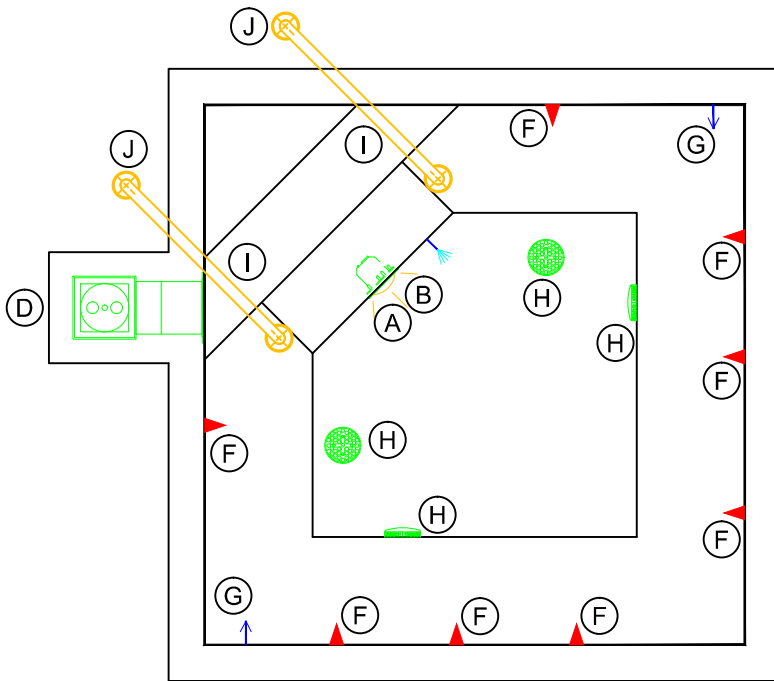


DWG TYPE
Light Detail

DWG NAME
825 E 4TH ST

DATE
12/6/2011

SHEET
PAGE 6 OF 8



ITEM	DESCRIPTION	MANUFACTURER	CATALOG NO.	QTY.
A	LIGHT NICHE (FOR UNDERWATER LIGHT) W/ 1" HUB	PENTAIR	782423	1
B	SPA BRIGHT UNDERWATER LIGHT, 120 VOLT, 100 WATT, 50' CORD, U.L. APPROVED	PENTAIR	78108100	1
C	LIGHT J-BOX	PENTAIR	78310700	1
D	SURFACE SKIMMER W/ EQUALIZER, NSF APPROVED	HAYWARD	SP-1084 FVE	1
F	HYDRO INLETS, 1 1/2" WATER, 1 1/2" AIR	HYDROAIR	10-5100	8
G	INLET FITTINGS, 1 1/2", WALL TYPE, W/ EYEBALL	HYDROAIR	10-3500	4
H	6" Round Hockey Puck <i>AquaStar 6HPHxxx</i> Sumplex Suction Outlet Floor/Wall 224 GPM @ 6.3fps Complies w/ ANSI Code ASME A112.19.8-2007 & VGB 2008	AQUASTAR	6HPHxxx	4
I	HAND RAIL, STAINLESS STEEL, 3' 0" LENGTH, W/ .065TUBING WALL THICKNESS	S.R. SMITH	3HR-3-065-1	2
J	BRONZE COMPRESSION CUP ANCHOR (6" X 1-1/2")	STANDARD BRONZE	PART # 5794	2

ITEM	DESCRIPTION	MANUFACTURER	CATALOG NO.	QTY.
O	CARTRIDGE FILTER 200 SQ. FT. CLEAN & CLEAR SERIES	PENTAIR/PAC FAB	CC200	1
P	SELFPRIMING PUMP AND MOTOR, 113 GPM @ 60 FT. HEAD, 2 HP, 230 VOLT, 20 AMP 1 PHASE, 2" DISCHARGE UNIT WITH PUMP STRAINER	PENTAIR	WFE-8	1
Q	SELFPRIMING PUMP AND MOTOR, 60 GPM @ 60 FT. HEAD, 3/4 HP, 230 VOLT, 20 AMP 1 PHASE, 2" DISCHARGE UNIT WITH PUMP STRAINER	PENTAIR	WFE-3	1
R	NATURAL GAS HEATER W/ POWER ASSISTED VENTILATION, 400,000 BTU	PENTAIR	MasterTemp 400K	1
V	AUTOMATIC CHLORINE / BROMINE FEEDER	PENTAIR	RAINBOW 320	1
T	Blue White Flow Meter, 2in Pvc Flowmeter 15-70 gpm	BLUE WHITE	F-300	1
U	SPA RULES SIGNAGE	-	-	1
X	CONTROLS SYSTEM, POWER CENTER W/ CIRCUIT BREAKER, DUAL TIME CLOCKS, REMOTE EMERGENCY SHUT OFF SWITCH AND JET ACTIVATION BUTTON (LOCATED ADJACENT TO SPA)	COMPOOL	LX802L	1

APPROVED

ALL DIMENSIONS SUBJECT TO 1/4" TOLERANCES

These drawings, concepts, and details contained herein are the original proprietary designs of NESPA ENTERPRISES, developed over many years of experience in the industry and as such are protected by the copyright laws of the United States Government. Reproduction of any of the above without written permission to do so by NESPA ENTERPRISES, is illegal.

NESPA ENTERPRISES INC.

2800 Richter Ave. Ste. C Oroville, CA 95966

Office: (530) 534-9910

Fax: (530) 534-9915

E-Mail: jim@tiledspas.com Web Site: www.tiledspas.com

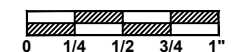


If printing as a PDF:

Page Scaling:

SCALE

3/8" = 1'



DWG NAME

825 E 4TH ST

DATE

12/6/2011

DWG TYPE

Equipment Layout

SHEET

PAGE 7 OF 8


O

Clean & Clear® Filters

Fiberglass Reinforced Polypropylene Tank

Featured Highlights

- NSF listed
- Chemical resistant
- Integrated continuous High Flow™ internal air relief*
- Chemical resistant tank body
- Lock ring with spring loaded latching device
- Corrosion resistant for easy cleaning
- High flow removal of media waste
- 1/4" drain and wash out
- High pressure backwash design



The Clean & Clear® Filter features a chemical resistant tank with no seal wear and a corrosion resistant for easy cleaning. All models are equipped with easy open valves for cleaning backwash. These filters are NSF listed, and are available in 30, 75, 100, 150, and 200 gallon flow rates.

Ordering Information

Product Model	Maximum Flow Rate (GPM)	Flow Rate (GPM) @ 1.0 PSI	Flow Rate (GPM) @ 1.5 PSI	Flow Rate (GPM) @ 2.0 PSI	Capacity (Gallons)	Capacity (Gallons)
CC30	30	28	26	24	30	30
CC75	75	70	65	60	75	75
CC100	100	90	85	80	100	100
CC150	150	140	130	120	150	150
CC200	200	180	170	160	200	200

Dimensions and Performance

Note: Actual system flow will depend on plumbing and other system components. Note: Pentair Pool Products does not recommend flow rates above 50 GPM.

Integrated continuous High Flow™ internal air relief is operating only when there is unobstructed flow in the circulating system. Note: Operating limits - maximum continuous operating pressure of 50 PSI. Maximum (shallow) applications, maximum operating water temperature maximum flow (50°F @ 100 GPM).

See page 123 for replacement parts.

P

WhisperFlo® High Performance Pump

By Pentair Pool Products



The industry standard by every measure

- WhisperFlo pumps are designed to operate at 100% efficiency. The variable speed motor allows for energy savings and reduces noise. The variable speed motor allows for energy savings and reduces noise.
- WhisperFlo pumps are designed to operate at 100% efficiency. The variable speed motor allows for energy savings and reduces noise. The variable speed motor allows for energy savings and reduces noise.
- WhisperFlo pumps are designed to operate at 100% efficiency. The variable speed motor allows for energy savings and reduces noise. The variable speed motor allows for energy savings and reduces noise.

Available from:

Pentair Pool Products

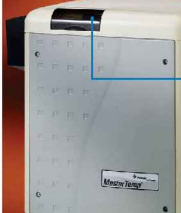
www.pentair.com

R

No matter what your criteria for top performance and value, MasterTemp® meets them all.

Fast, efficient, compact, quiet, safe and eco-friendly

- No matter what your criteria for top performance and value, MasterTemp® meets them all.
- No matter what your criteria for top performance and value, MasterTemp® meets them all.
- No matter what your criteria for top performance and value, MasterTemp® meets them all.



Available from:

Pentair Pool Products

www.pentair.com

Easy to install or retrofit in even the tightest spaces — models from 175W to 400W BTUs — all measure 27 1/2" x 27 1/2" x 20 1/2"

Roasting digital display shows more installation options and easier access to view operating information

Roasting, tough composite exterior for long life

Pool Sizing

Pool Size	175W BTU				200W BTU				250W BTU				300W BTU				350W BTU				400W BTU			
	Pool Size	Pool Size	Pool Size	Pool Size	Pool Size	Pool Size	Pool Size	Pool Size	Pool Size	Pool Size	Pool Size	Pool Size	Pool Size	Pool Size	Pool Size	Pool Size	Pool Size	Pool Size	Pool Size	Pool Size	Pool Size	Pool Size		
5	10	15	20	25	10	15	20	25	10	15	20	25	10	15	20	25	10	15	20	25	10	15	20	25

Spa Sizing

Spa Size	175W BTU				200W BTU				250W BTU				300W BTU				350W BTU				400W BTU			
	Spa Size	Spa Size	Spa Size	Spa Size	Spa Size	Spa Size	Spa Size	Spa Size	Spa Size	Spa Size	Spa Size	Spa Size	Spa Size	Spa Size	Spa Size	Spa Size	Spa Size	Spa Size	Spa Size	Spa Size	Spa Size	Spa Size	Spa Size	Spa Size
5	10	15	20	25	10	15	20	25	10	15	20	25	10	15	20	25	10	15	20	25	10	15	20	25

V

Rainbow™ Model 300/320 Automatic Chlorine/Bromine Feeders

By Pentair Pool Products



The efficient, easy way to sanitize your pool or spa

The Rainbow™ Model 300/320 Automatic Chlorine/Bromine Feeders are designed to provide a consistent, controlled release of sanitizer into your pool or spa. The feeders are made of durable, UV-resistant plastic and are easy to install and maintain.

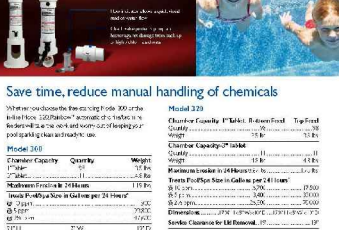
Available from:

Pentair Water Pool and Spa

www.pentair.com

Rainbow™ Model 300/320 Automatic Chlorine/Bromine Feeders

By Pentair Pool Products



Save time, reduce manual handling of chemicals

The Rainbow™ Model 300/320 Automatic Chlorine/Bromine Feeders are designed to provide a consistent, controlled release of sanitizer into your pool or spa. The feeders are made of durable, UV-resistant plastic and are easy to install and maintain.

Available from:

Pentair Water Pool and Spa

www.pentair.com

X

LX80 & LX820 Systems Commercial Pool/Spa Control Systems

By Pentair Water



Featured Highlights

- LX80 Commercial Pool/Spa Control System
- LX820 Commercial Pool/Spa Control System

Ordering Information

Product	Control Panel	Control Panel	Control Panel	Control Panel	Control Panel	Control Panel
LX80	175W BTU	200W BTU	250W BTU	300W BTU	350W BTU	400W BTU

APPROVED

ALL DIMENSIONS SUBJECT TO 1/4" TOLERANCES

These drawings, concepts, and details contained herein are the original proprietary designs of NESPA ENTERPRISES, developed over many years of experience in the industry and as such are protected by the copyright laws of the United States Government. Reproduction of any of the above without written permission to do so by NESPA ENTERPRISES, is illegal.

NESPA ENTERPRISES INC.
 2800 Richter Ave. Ste. C Oroville, CA 95966
 Office: (530) 534-9910 Fax: (530) 534-9915
 E-Mail: jim@tiledspas.com Web Site: www.tiledspas.com



If printing as a PDF:
 Page Scaling: None

DWG NAME: 825 E 4TH ST

SCALE: N/A

DATE: 12/6/2011

DWG TYPE: EQ Documents

SHEET: PAGE 8 OF 8



APPROVED

ALL DIMENSIONS SUBJECT TO 1/4" TOLERANCES

These drawings, concepts, and details contained herein are the original proprietary designs of NESPA ENTERPRISES, developed over many years of experience in the industry and as such are protected by the copyright laws of the United States Government. Reproduction of any of the above without written permission to do so by NESPA ENTERPRISES, is illegal.

NESPA ENTERPRISES INC.

2800 Richter Ave. Ste. C Oroville, CA 95966

Office: (530) 534-9910

Fax: (530) 534-9915

E-Mail: jim@tiledspas.com Web Site: www.tiledspas.com

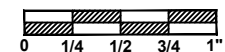


If printing as a PDF:

Page Scaling:

SCALE

N/A



DWG TYPE

Return Plumbing

DWG NAME

825 E 4TH ST

DATE

1/18/2012

SHEET

PAGE 1 OF 1

STANDARD NESPA IN-GROUND INSTALLATION *INSTRUCTIONS* **SET-UP AND EXCAVATION**

Prerequisites: Before installing your Nespa spa. You may be required to acquire a permit from your local State, County, and City building dept and or Health department. (Commercial jobs need Health Dept. Approval). Your spa installation must comply with the most current codes. (**Uniform Swimming Pool, Spas & Hot Tub Code 2006 (USPC 2006)**).

Spa drawings: Request from Nespa a current spa specific construction detail, plan and section, spa plumbing detail.

Delivery Access: Clearly determine the method of getting the spa to jobsite and into the hole. This may require the use of a crane, forklift, hoist, backhoe and/or manpower etc.

- 1) The following instructions are general guidelines and may not apply to your specific jobsite conditions. When excavating for your spa remember to provide for plumbing and light connection clearances. In order to determine how to excavate for your spa or swim spa, measure spas outside dimension (O.D.) and add minimum 3" to all sides. This 3" clearance is to accommodate jet and suction plumbing. This 3" clearance can change or be reduced upon request. Note: skimmer location, this area may have to be larger than 3", if commercial 22".
- 2) **Freeze Climates-** If the spa is placed into a vault (typical of freeze climates) a standard 18" or more of clearance minimum from spa perimeter should be provided. This dead air space is for possible future access to spa plumbing in case of a freeze. Area drain is mandatory. **Ask your local installer** for his experienced opinion. Do not hesitate to call us because we want to be sure that your installation progresses as smoothly as possible. If you have questions call us. (888) 479-4677.
- 2) **Hole depth** is determined by spa's outside height dimension. This height may vary depending if spa has skids or no skids. The spa lip may be finished or non-finished. How is the perimeter deck elevation transitioning to the spa? Focus on the finish surrounding deck elevations, thickness of the finish material on spa upper horizontal lip, equal to lip or under the spa lip. This material can be tile, stone, concrete or brick.
- 3) **Preplumb** the spa before it goes into the hole. If there are needs for electrical, bonding or control conduits run them as well before dropping in hole. Connect bond wire to niche would be best.
- 4) **Spa should sit on level 3 ½" thick reinforced concrete pad. Sweep debris off pad prior to dropping in hole.**
- 5) **Install spa** into the hole on top of concrete pad. Use the Eye bolts provided for crane, forklift etc. rigging. Do not hold onto pipes. Use caution with suction and jet plumbing when lowering into hole. **DO NOT STRESS FITTINGS!** Fill Spa with water and check for leaks prior to backfill.

- 6) **Check site reference** points for proper spa positioning (i.e., squaring to house, garage, etc.).
- 7) **Shim to level spa.** Shim with non-compression able material. Re square to house, or ref. point.
- 8) **Dry pack** with cement the gaps that have been created when shimming spa level.
- 9) **Connect pipes to tees** if spa is preplumb. Installers properly support your new plumbing from stressing spas preplumb fittings. After electrical conduit and bond wire is connected to light niche, water test spa before back filling with sand.
NOTE: All Nespa products are water tested prior to leaving factory.

ELECTRICAL:

- 1) All electrical connections to spa or equipment should comply with the most recent national electrical code (NEC), state and local codes.
- 2) Connect electrical conduit to light niche. This work should be done or reviewed by a licensed electrician.
- 3) To install spa light you will need to include inside the PVC conduit to the light niche a solid #8 coated copper wire. (If you are use brass conduit, internal bond wire is not required.) This bond wire should be pulled with the light cord at the same time. This bond wire needs to be attached to the internal bonding lug of the light niche. An approved encapsulate should be applied to bond wire connection in niche.
- 4) An external #8 copper wire shall be connected to the external bonding lug on the rear of the light niche. This copper wire can then be used for additional bonding requirements (i.e., handrails or any other metallic object within 5' of the spa.

PLUMBING:

- 1) **When plumbing a Nespa it is important to properly size the plumbing. We highly recommend that you follow the pump manufacturer's pipe sizing requirements and Uniform Swimming Pool, Spas & Hot Tub Code 2006 (USPC 2006). This code book is available at www.IAPMO.org or (909) 472 4100.**
- 2) The jet air venturi should be a Hartford loop design adjacent to spa shell and air entry point can be located next to spa or remotely at equipment.
- 3) Fill spa with water and test the system for leaks PRIOR to backfilling with sand.

SAND BACK FILL:

- 1) **With water in spa, back-fill around spa perimeter with dry plaster sand and wet wash with hydraulic attachment to hose. Let set for one hour and hydraulic dry again. Be sure water level in spa is at the highest level. Any questions please call us. (888) 479-4677.**
- 2) **If spa is free standing on elevated deck or a structure, it is important to fill spa with water and load area prior to installing coping or perimeter decking. If spa is installed in a vault situation a area drain is needed.**

NESPA ENTERPRISES INC.

2800 Richter Ave. Suite E

Oroville, CA 95966

Office: (888) 479-4677 Fax: (530) 534-9915

E-Mail: nespa@pacbell.net www.tiledspas.com

IN-GROUND

INSTALLATION

ALL DIMENSIONS SUBJECT TO 1/4" TOLERANCES

SCALE: 1/2" = 1'-0"

DATE: 3/27/02

JOB : STANDARD INSTALL

DW #: SI-1, SI-2

NOTE:

Sump pump or gravity drain is required for removing water from vault



STANDARD VAULT INSTALLATION

SI-1



HOLE EXCAVATION:

EXCAVATE HOLE 1'-0" LARGER THAN THE OUTSIDE DIAMETER (OD) OF SPA

4" CONCRETE SLAB REINFORCED WITH #10 MESH

STANDARD INGROUND INSTALLATION

SI-2

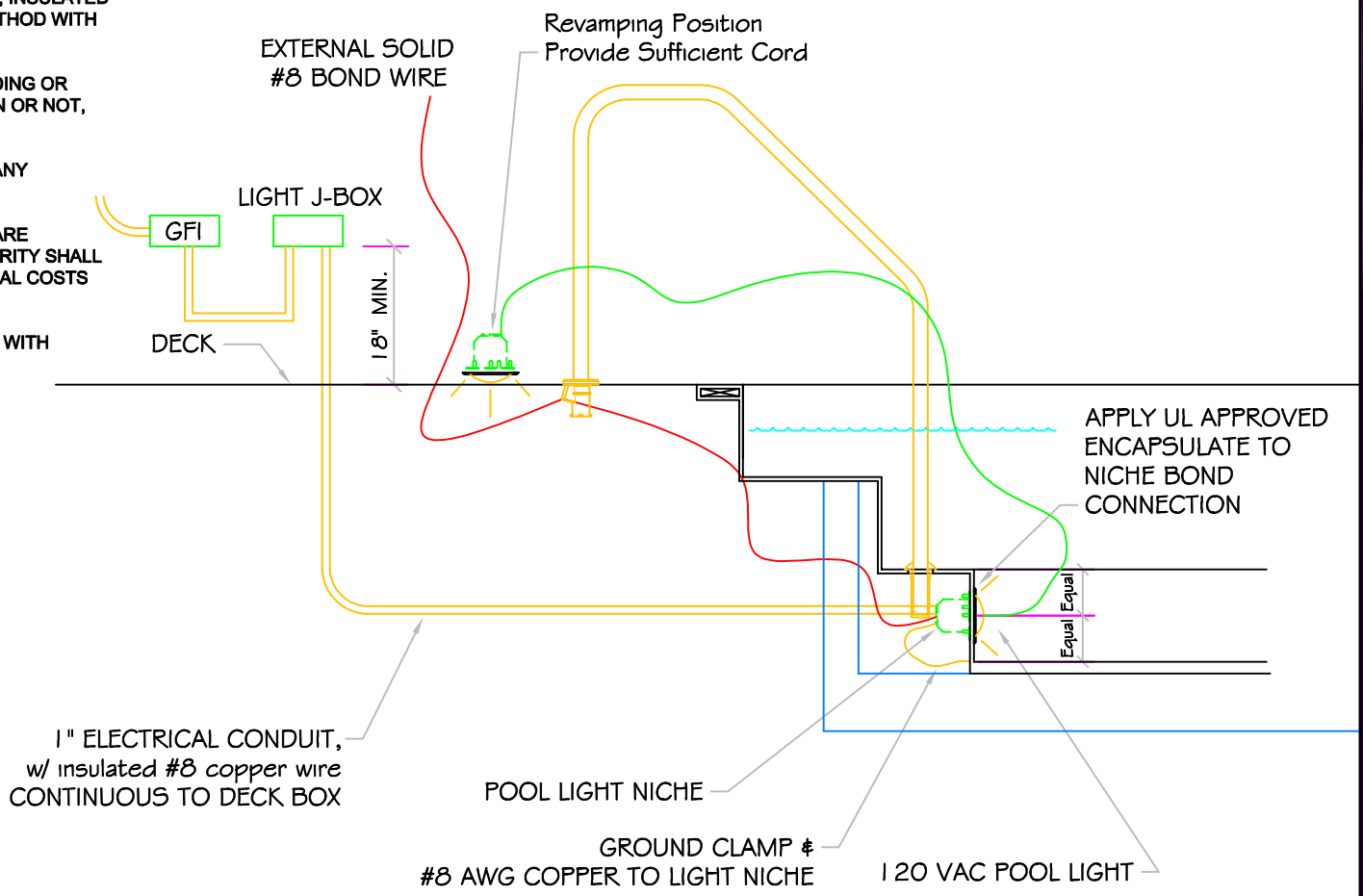
NOTE:

Footing can not surcharge spa. Slope from bottom of slab to nearest corner of house footing must not exceed 1" = 1".

POOL BONDING REQUIREMENTS:

1. THE FOLLOWING PARTS SHALL BE BONDED TOGETHER AND CONNECTED TO THE COMMON BONDING GRID.
 - A. ALL THE METALLIC PARTS OF THE POOL STRUCTURE INCLUDING COPING STONES, DECK, PERMANENT PLAY STRUCTURES, PERMANENT EXERCISE STRUCTURES.
 - B. ALL METAL FITTINGS WITHIN OR ATTACHED TO THE POOL STRUCTURE
 - C. METAL PARTS ASSOCIATED WITH THE POOL WATER CIRCULATING SYSTEM, INCLUDING PUMPS, FILTERS, AND HEATERS.
 - D. METAL PARTS ASSOCIATED WITH POOL COVERS
 - E. METAL SHEATHED CABLES AND RACEWAYS, METAL PIPING AND ALL FIXED METAL PARTS WITHIN 5 FEET HORIZONTALLY OF INSIDE WALLS OF POOL AND WITHIN 12 FEET ABOVE MAXIMUM WATER LEVEL OF POOL.
 - F. METAL PARTS ASSOCIATED WITH OBSERVATION STANDS, TOWERS, PLATFORMS, AND DIVING STRUCTURES.
2. BONDING CONDUCTORS SHALL BE MINIMUM #8 SOLID COPPER, INSULATED E.C. SHALL COORDINATE APPROVED CONNECTOR TYPE AND METHOD WITH LOCAL ELECTRICAL AND/ OR POOL INSPECTOR.
3. SPECIFIC MANUFACTURER'S INSTRUCTIONS REGARDING BONDING OR GROUNDING OF POOL EQUIPMENT, WHETHER INDICATED HEREIN OR NOT, SHALL BE STRICTLY FOLLOWED.
4. THE COMMON BONDING GRID SHALL NOT BE CONNECTED TO ANY ELECTRICAL DISTRIBUTION EQUIPMENT.
5. ANY PARTS IN ADDITION TO THOSE DESCRIBED HEREIN THAT ARE INDICATED BY POOL CONTRACTOR OR LOCAL INSPECTION AUTHORITY SHALL BE BONDED TO THE COMMON BONDING GRID WITH NO ADDITIONAL COSTS INCURRED BY THE OWNER.
6. THE ELECTRICAL CONTRACTOR SHALL COORDINATE BONDING WITH GENERAL CONTRACTOR.

LIGHT DETAIL



ALL DIMENSIONS SUBJECT TO 1/4" TOLERANCES

These drawings, concepts, and details contained herein are the original proprietary designs of NESPA ENTERPRISES, developed over many years of experience in the pool and spa industry and as such are protected by the copyright laws of the United States Government. Reproduction of any of the above without written permission to do so by NESPA ENTERPRISES, is illegal.

NESPA ENTERPRISES INC.
 2800 Richter Ave. Ste. C Oroville, CA 95966
 Office: (530) 534-9910 Fax: (530) 534-9915
 E-Mail: sales@tiledspas.com Web Site: www.tiledspas.com



SIZE A	DWG NAME DETAILS	DWG TYPE Detail
SCALE 1/2" = 1'	DATE 7/24/2008	SHEET PAGE 1 OF 1

NESPA ENTERPRISES, Inc. LIMITED WARRANTY

This LIMITED WARRANTY covering NESPA products is extended to the ORIGINAL PURCHASER-USER BY NESPA ENTERPRISES Inc.(NESPA), 2800 Richter Ave. Unit C California 95966.

NESPA products are thoroughly inspected and tested prior to factory shipment. NESPA warrants to the ORIGINAL PURCHASER-USER that NESPA Spas and Swim Spas will be free of defect in workmanship, accessories and parts, provided said accessories and parts were manufactured by NESPA. NESPA, under this LIMITED WARRANTY, warrants only that its Spas and Swim Spas shall be structurally sound, shall retain their shape, and shall retain water for the warranty period. NESPA warrants the adhesion of tile to fiberglass for a period of three (3) years and structural soundness for ten (10) years. NESPA warrants epoxy grout adhesion for a period of three years. If any such defects appear and are reported within the warranty period, NESPA shall repair or replace such defective parts without charge if an inspection proves the claim.

The provisions of the LIMITED WARRANTY shall not apply to tile cracked, split, chipped or damaged after the product has left the factory, nor damage to tile caused by freezing nor to damage, defect, malfunction or failure to conform with the above warranty provisions where the damage, defect, malfunction or failure to conform was caused during shipment or by distributor or by unreasonable use by ORIGINAL PURCHASER-USER including improper water balance and improper sand pack or support.

This LIMITED WARRANTY shall not apply to any plumbing, equipment, or installation of spas and Swim Spas and shall not apply to any alterations made to or upon NESPA products except alterations made by NESPA employees or NESPA authorized representatives.

This LIMITED WARRANTY is expressly in lieu of all other warranties expressed or implied including the warranties of merchantability and fitness for use and all other obligations or liabilities on NESPA'S part, and NESPA neither assumes nor authorizes any other person to assume for NESPA any other liability in connection with the sale of this NESPA product. This LIMITED WARRANTY shall not apply to this NESPA product or any part thereof which has been subject to accident, negligence, alteration, abuse or misuse. NESPA makes no warranty whatsoever with respect to accessories or parts not manufactured by NESPA.

The term "ORIGINAL PURCHASER-USER" as used in this LIMITED WARRANTY shall be deemed to mean that person for whom the NESPA product is originally installed.

The LIMITED WARRANTY provided herein and the obligations and liabilities of NESPA hereunder are exclusive and are in lieu of, and buyer and original PURCHASE-USER hereby waive all other remedies, warranties, guarantees or liabilities, expressed or implied, arising by law or otherwise (including without limitation and obligations of NESPA with respect to fitness, merchantability, and consequential damages) or whether or not occasioned by NESPA'S negligence.

This LIMITED WARRANTY shall not be extended, altered or varied except by a written instrument signed by NESPA and original PURCHASER-USER.