

PLAN APPROVAL DOCUMENTATION

PRELIMINARY

Please initial **Yes** or **No** for each item. Production will not start until all items are reviewed and approved.

1. I have reviewed and approved the Spa dimensions, width, length and height.(Pg 1)
Yes_____ No_____ Other _____
2. I have reviewed and approved the jet quantity and locations. (Pg 1)
Yes_____ No_____ Other _____
3. I have reviewed and approved the Spa Tile Type, Grout and Layout. (Pg 2)
Yes_____ No_____ Other _____

I approve the above drawings **X**_____ **Date:**_____

Any changes to these plans from here forward shall be directed in writing to Nespa.

SPA FABRICATION AUTHORIZATION

Nespa's engineering and structural manufacturing departments may find it necessary to make slight adjustments (= 1") to your spa. This may include the size of the spa (OD/ID), tile cuts, depths, jet location, bench steps etc. These adjustments must be made in the primary stages of building the spa. The adjustments are generally made to ad structural and aesthetic integrity to the vessel. IE: balance of supporting gussets (exterior) and less tile cuts/ symmetrical cuts, grout lines, etc. (interior)

Please initial next to the following number that describes your project needs .

- _____ 1. YES, I understand adjustments need to be made. Nespa will use their expertise to make these adjustments as needed. I give them the authority to make changes. I will receive final accurate drawings prior to receipt of spa or spa hole construction (if changes were made to the size)
- _____ 2. NO, No changes can be made even under 1". Dimensions are fixed. More tile cuts may be needed, Structural supports may be altered to accommodate.
- _____ 3. Nespa will need to contact us for any changes to spa dimensions prior to continued spa fabrication.

5/9/2013 10:50:17 AM

NESPA ENTERPRISES INC.

2800 Richter Ave. Suite C Oroville, CA 95966

Office: (530) 534-9910

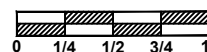
Fax: (530) 534-9915

E-Mail: jim@tiledspas.com Web Site: www.tiledspas.com



If printing as a PDF:

Page Scaling:



DWG TYPE

Revisions

DWG NAME

972 PALISADES

DATE

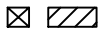





5/9/2013

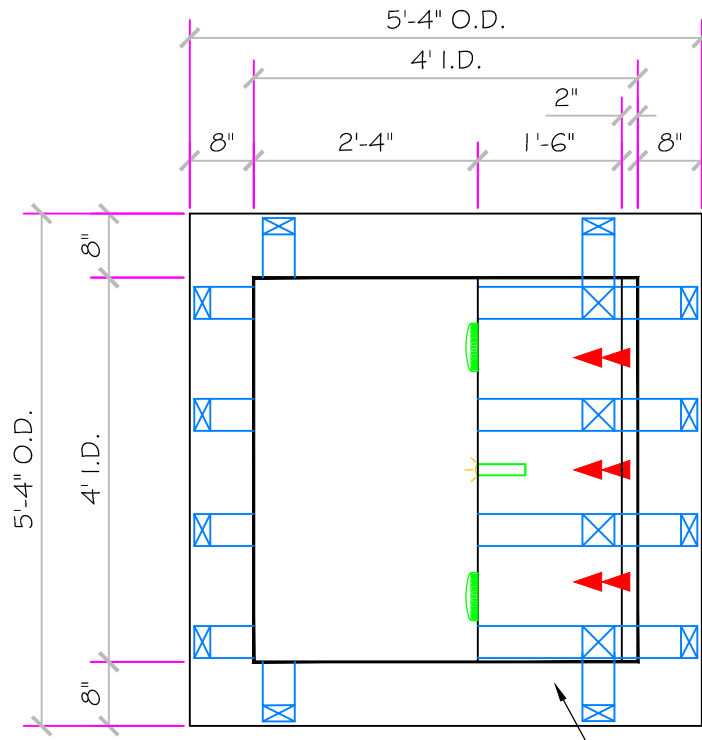
SHEET

Cover Sheet

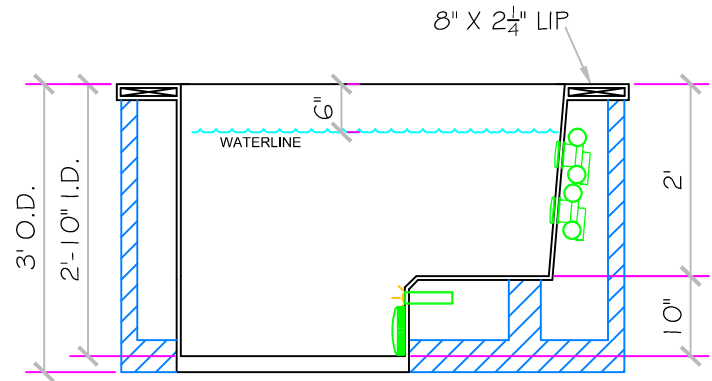
These drawings, concepts, and details contained herein are the original proprietary designs of NESPA ENTERPRISES, developed over many years of experience in the industry and as such are protected by the copyright laws of the United States Government. Reproduction of any of the above without written permission to do so by NESPA ENTERPRISES, is illegal.

SPECIFICATIONS	
SHELL WEIGHT	1200 LBS.
WATER WEIGHT	2432 LBS.
TOTAL SHELL & WATER WEIGHT	3632.1 LBS.
WATER VOLUME	39 Cu.Ft.
WATER GALLONS	292 GAL.
SURFACE AREA	16.0 SQ. FT.
ICC ES LISTED #	PMG-1161
FDA#	2030305

SKID SUPPORT STRUCTURE* BONDED TO SPA	
	
*SKIDS SUPPLIED BY NESPA	
LIGHT NICHE	
	L.E.D. SPA LIGHT
SIDEWALL SUCTION	
	6" Round Hockey Puck AquaStar 6MPHAcc Sumpless Suction Outlet Floor/Wall 224 GPM @ 6.3fps Complies w/ ANSI Code ASME A112.19.8-2007 & VGB 2008
JET	
	HYDRO INLETS 1-1/2" WATER - 1-1/2" AIR HYDROAIR #10-5100 COMPLIES W/ ANSI CODE ASME A112.19.8-07 UL APPROVED
RETURN	
	INLET FITTINGS 1-1/2" WALL TYPE W/ EYEBALL HYDROAIR #10-3800 COMPLIES W/ ANSI CODE ASME A112.19.8-07 UL APPROVED
FILL	
	INLET FITTINGS 1-1/2" WALL TYPE W/ EYEBALL HYDROAIR #10-3800 COMPLIES W/ ANSI CODE ASME A112.19.8-07 UL APPROVED



5kw Pack System Installed under Bench



PRELIMINARY

5/9/2013 10:50:18 AM

ALL DIMENSIONS SUBJECT TO 1/4" TOLERANCES

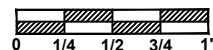
NESPA ENTERPRISES INC.
2800 Richter Ave. Suite C Oroville, CA 95966
Office: (530) 534-9910 Fax: (530) 534-9915
E-Mail: jim@tiledspas.com Web Site: www.tiledspas.com



If printing as a PDF:

Page Scaling:

SCALE
1/2" = 1'



DWG TYPE

SD

DWG NAME 972 PALISADES

DATE 5/8/2013

SHEET PAGE 1 OF 3

These drawings, concepts, and details contained herein are the original proprietary designs of NESPA ENTERPRISES, developed over many years of experience in the industry and as such are protected by the copyright laws of the United States Government. Reproduction of any of the above without written permission to do so by NESPA ENTERPRISES, is illegal.

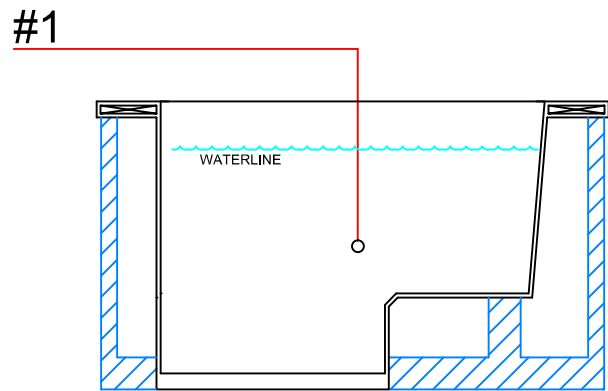
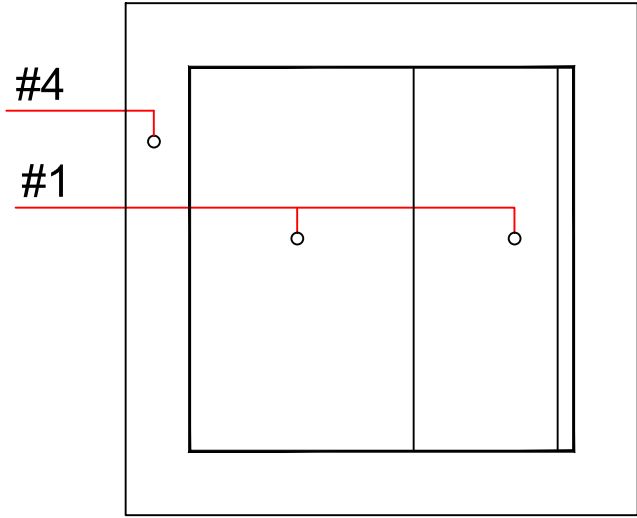
DalTile Sonterra 1" X 1"
SR 70 - Cancun Blue

- #1 - FIELD TILE: _____
- #2 - WATERLINE (optional): _____
- #3 - BENCH & STEP EDGES (optional): _____
- #4 - TILED LIP (optional): By Others

Date: _____

Approval: _____

- #1 - GROUT: _____
- #2 - GROUT: _____
- #3 - GROUT: _____



PRELIMINARY

5/9/2013 10:50:18 AM

ALL DIMENSIONS SUBJECT TO 1/4" TOLERANCES

NESPA ENTERPRISES INC.
 2800 Richter Ave. Suite C Oroville, CA 95966
 Office: (530) 534-9910 Fax: (530) 534-9915
 E-Mail: jim@tiledspas.com Web Site: www.tiledspas.com



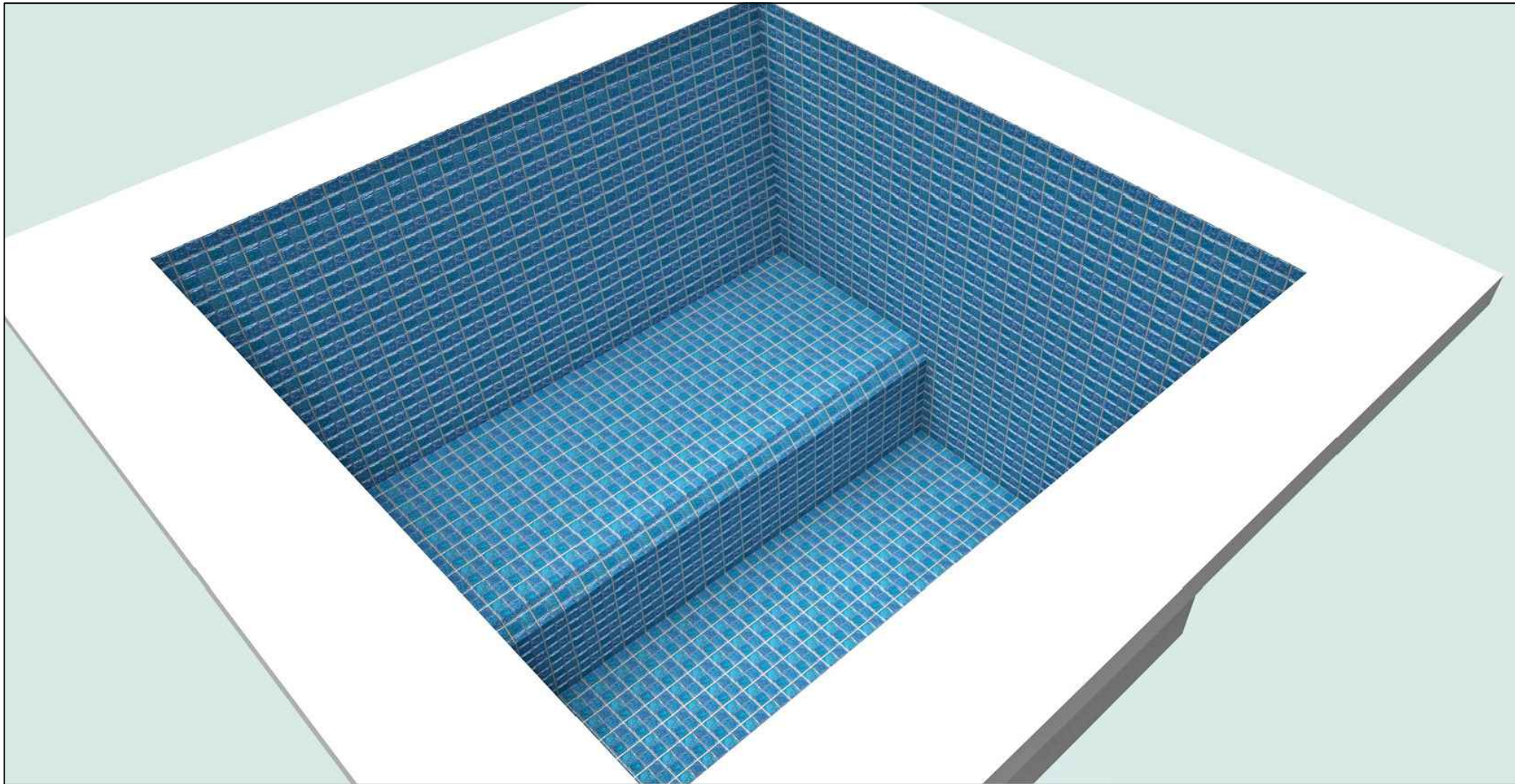
If printing as a PDF:
 Page Scaling:
 DWG NAME: 972 PALISADES

SCALE: 1/2" = 1'

 DATE: 5/8/2013

DWG TYPE: Tile
 SHEET: PAGE 2 OF 3

These drawings, concepts, and details contained herein are the original proprietary designs of NESPA ENTERPRISES, developed over many years of experience in the industry and as such are protected by the copyright laws of the United States Government. Reproduction of any of the above without written permission to do so by NESPA ENTERPRISES, is illegal.



5/9/2013 10:50:19 AM

All drawing dimensions supplied by [NESPA ENTERPRISES INC.](http://www.nespa.com) are for reference only. All CAD files were created using AutoCAD file (*.dwg.) and were provided as a service to our customers using AutoCAD. Errors sometimes occur during this process and with software incompatibility upon opening a file. [NESPA ENTERPRISES INC.](http://www.nespa.com) and/or any authorized distributor of our products will not be held responsible for problems arising from files which have been converted and does not warranty the documents against deficiencies or typographical errors of any kind. We recommend that all measurements are verified with actual physical product before any custom fabrication in the field occurs.

PRELIMINARY

ALL DIMENSIONS SUBJECT TO 1/4" TOLERANCES

These drawings, concepts, and details contained herein are the original proprietary designs of [NESPA ENTERPRISES INC.](http://www.nespa.com), developed over many years of experience in the industry and as such are protected by the copyright laws of the United States Government. Reproduction of any of the above without written permission to do so by [NESPA ENTERPRISES INC.](http://www.nespa.com), is illegal.

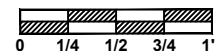
NESPA ENTERPRISES INC.
 2800 Richter Ave. Ste. C Oroville, CA 95966
 Office: (530) 534-9910 Fax: (530) 534-9915
 E-Mail: jim@tiledspas.com Web Site: www.tiledspas.com



If printing as a PDF:

Page Scaling:

SCALE
N/A



DWG TYPE
Render

DWG NAME
972 PALISADES

DATE
5/8/2013

SHEET
PAGE 3 OF 3