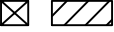








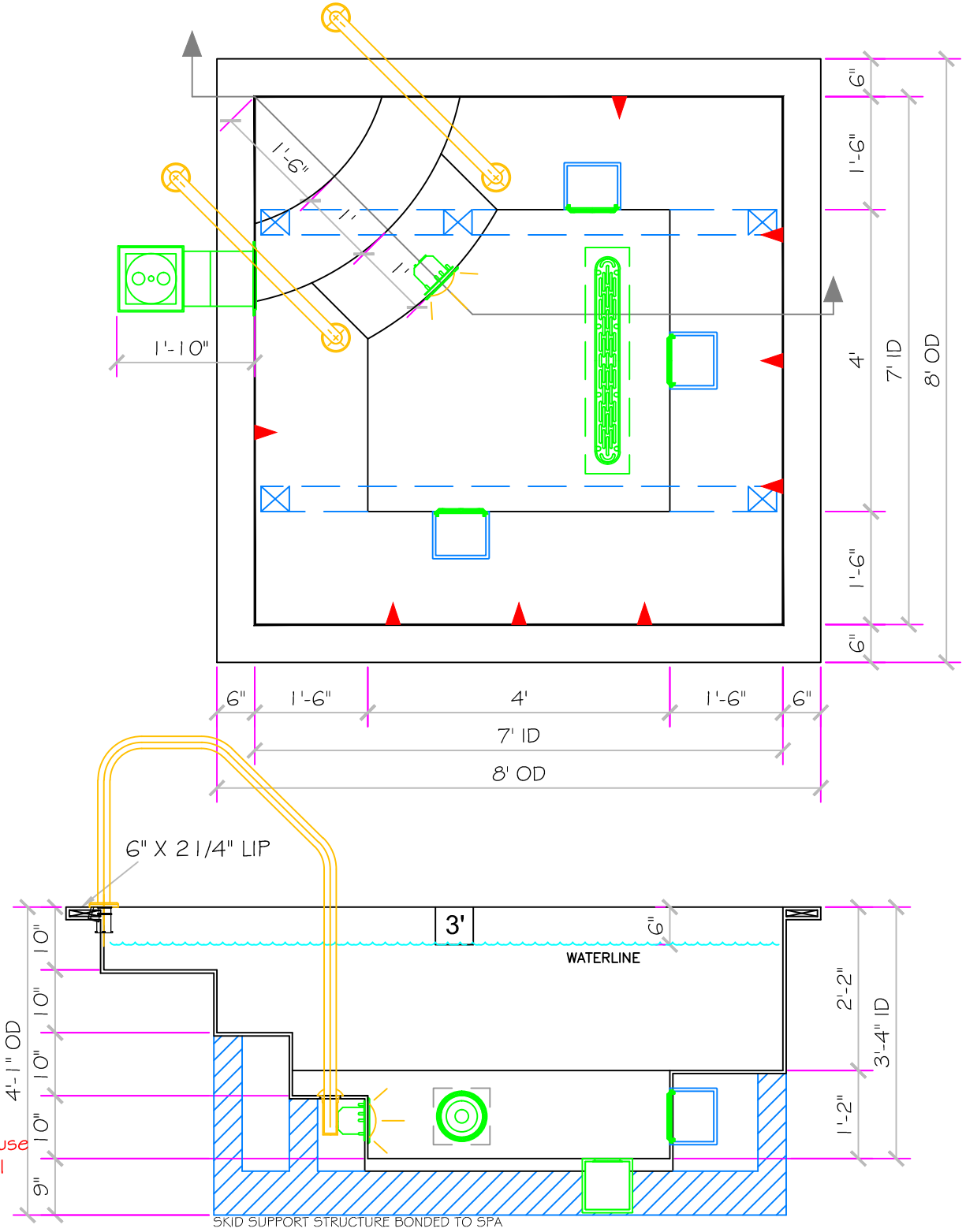


# ACAPULCO II

## ALL TILED SPA - Fits 4 Adults

SPECIFICATIONS	
DRY WEIGHT:	2000
TOTAL WEIGHT:	16094
WATER:	1690.5
VOLUME:	226
WEIGHT:	14094
SURFACE AREA:	49.0 SQ. FT.
IAPMO#:	1138
FDA#:	2030305

<b>SKID SUPPORT STRUCTURE* BONDED TO SPA</b>	
 *SKIDS SUPPLIED BY NESPA	
<b>LIGHT NICHE</b>	
 SPA BRIGHT, 120 V, 100 WATT, 50' CORD, U.L. APPROVED	
<b>MAIN DRAIN</b>	
 AquaStar 32CDFLFR, 32" Channel Drain, Approved Max Flow Rate: Floor = 236 GPM @ 3.4 fps Wall = 136 GPM @ 1.9 fps V.G.B Approved Safety Drain	
<b>SIDEWALL SUCTION</b>	
 AquaStar 8AV, 8" Dia Frame, Approved Max Flow Rate: Floor = 88 GPM @ 3.2 fps Wall = 70 GPM @ 2.6 fps 8.8 Sq In - Open Area V.G.B Approved Safety Drain	
<b>EQUALIZER</b>	
 5" HIGH FLOW SUCTIONS Waterway 640-357xV Super Hi-Flow Suction Assy. Max Flow 180 GPM Complies w/ ANSI Code ASME A112.19.8-2007 & VGB 2008	
<b>SKIMMER</b>	
 HAYWARD SP-1084FVE SURFACE SKIMMER W/ EQUALIZER, NSF APPROVED	
<b>JET</b>	
 HYDRO INLETS 1-1/2" WATER - 1-1/2" AIR HYDROAIR #10-5100 COMPLIES W/ ANSI CODE ASME A112.19.8-07 UL APPROVED	
<b>RETURN</b>	
 INLET FITTINGS 1-1/2" WALL TYPE W/ EYEBALL HYDROAIR #10-3500 COMPLIES W/ ANSI CODE ASME A112.19.8-07 UL APPROVED	
<b>FILL</b>	
 INLET FITTINGS 1-1/2" WALL TYPE W/ EYEBALL HYDROAIR #10-3500 COMPLIES W/ ANSI CODE ASME A112.19.8-07 UL APPROVED	



Approved for Commercial use  
Complies with VGB Pool  
& Spa Safety Act