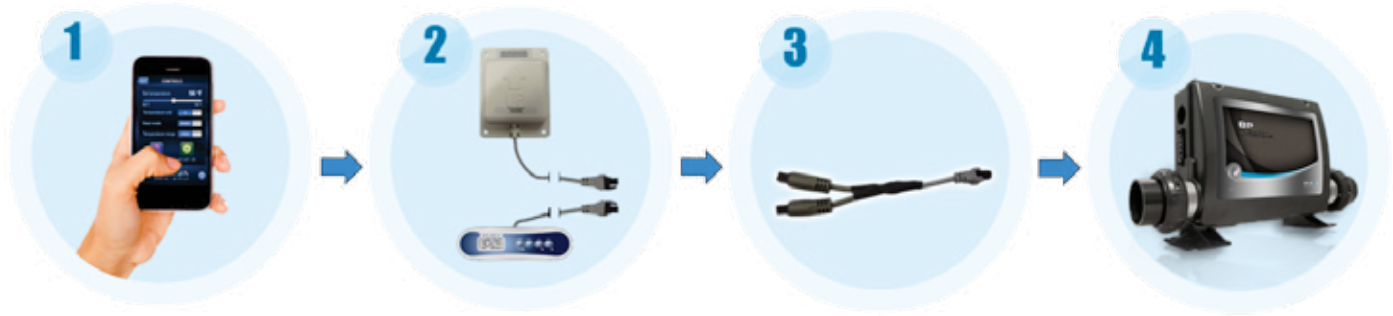


BP500 WI-FI Hardware Connections

Wireless System Control

Now you can control your system wirelessly. With a few simple connections and some additional hardware you can have full control of your spa system. To download the software go to the Apple Apps store and download the free spa app, run through the quick setup and your done.



Wireless Connection

WiFi Module (50254)
TP400 shown

Y-Cable 4 pin (25657)

For more information on our spa app please visit www.balboawatergroup.com/iphone-application or you can contact our technical support at 714.834.0384.

Note: All spa installation or repairs must be done by a qualified electrician in accordance with the country or local electrical codes in effect at the time of installation.

Additional Hardware Needed For WI-FI Connections



Y-Cable 4 Pin (25657)



WI-FI Module (50254)

Dimension:

Width 3.75" (95.25mm)

Height 4.75" (102.65mm)

Depth: 1.125" (28.57mm)