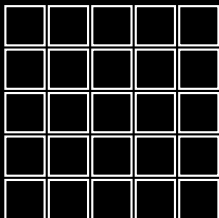


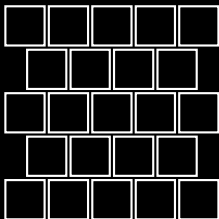
# brillante

Semi-transparent glass  
mosaic veined with enamels  
and aventurina stone.

*Mosaico semitransparente  
con vetas de esmalte y piedra  
aventurina.*



3/4" x 3/4" · 2 x 2 cm  
Aligned joint · *Junta alineada*



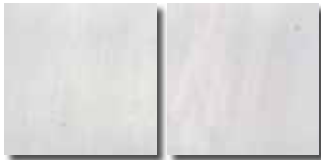
3/4" x 3/4" · 2 x 2 cm  
Staggered joint · *Junta partida*



**brillant** mix (3/4" x 3/4" · 2 x 2 cm)  
hotel ritz · miami beach, florida, usa

# BRILLANTE (3/4" x 3/4" · 2 x 2 cm)

brillante



281 Superior (1)



280



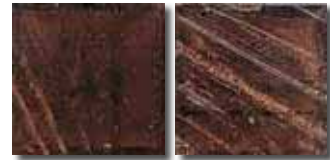
221



220



222



223



261



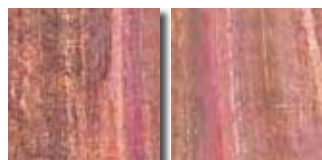
262



263



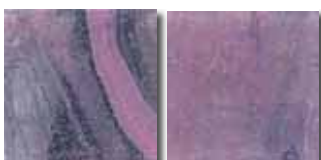
264



265



267 Superior (2)



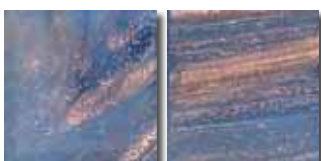
271 Superior (1)



272 Superior (1)



275



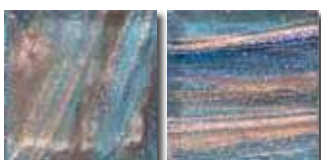
224



231



239



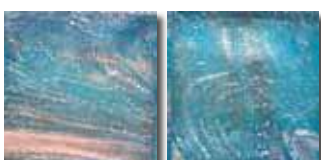
226



225



238



250



237



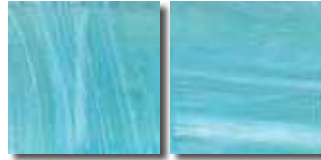
244



# BRILLANTE (3/4" x 3/4" · 2 x 2 cm)



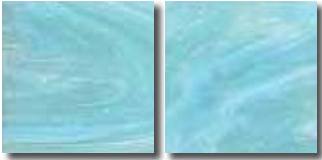
240



241



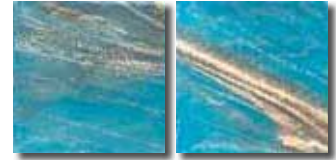
245



246



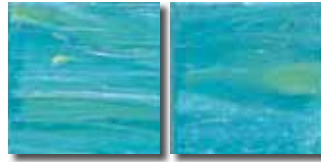
243



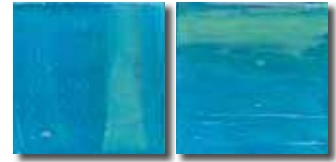
242



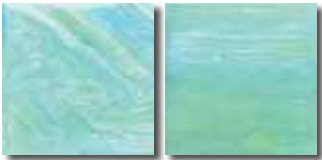
247



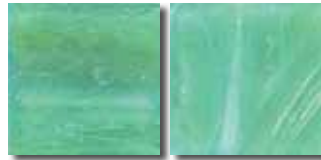
248



249



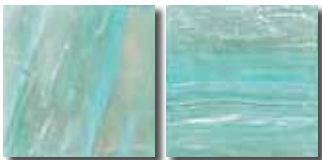
251



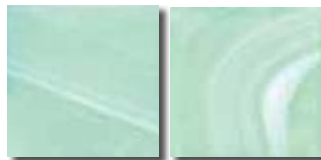
252



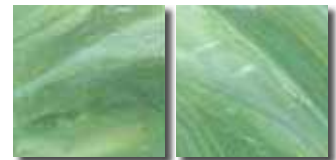
253



230



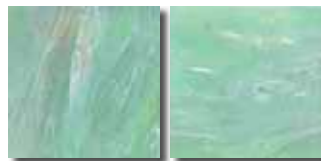
232



233



229



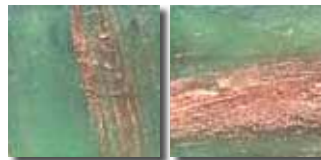
234



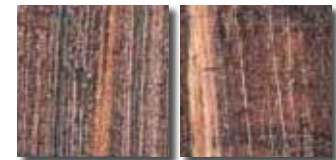
236



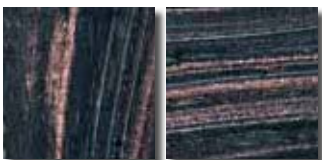
274



235



270



260



227



228