

NESPA
TILED SPAS

Production Booklet

for

Burke Williams Topanga SPAS

2800 Richter Ave. Suite C, Oroville, CA 95965 • **voice:** (530)534-9910
fax: (530)534-9915 • **email:** sales@tiledspas.com • **website:** www.tiledspas.com



RECOMMENDED MAINTENANCE

Please Note:

These are only recommended guidelines to care for a Nespa all tiled spa. Local codes may require additional procedures, therefore consult with a pool professional that is LA county Health Department certified for more information on local codes and requirements.

SPA SURFACE

Your spa tile is acid resistant and frost-proof. The Tile does not absorb germs or algae. Tile does not stain and is very easy to clean. Color does not fade or lose its luster. All grouts are epoxy based and are extremely durable. To remove scum line use soft nylon brush and small amounts of biodegradable soaps. Do not use abrasive brushes or chemicals.

MAINTENANCE

A. CHEMICALS:

- 1) It is important to maintain a chlorine residual of 2 PPM in the spa. That residual can be provided by chlorine or bromine.
- 2) It is recommended to use Bromine or dichlor (granular) forms of chlorine. If bromine Tabs are used we suggest floating or inline dispenser.
- 3) Never use acid to lower Ph in the tile spa.
- 4) Never use trichlor chlorine (1" or 3") tablets in the Nespa spas.
- 5) Never place tablets in skimmer basket.

B. DRAINING THE SPA:

- 1) It is recommended to drain the spa at least once every 2 months depending on bath load and water clarity.
- 2) The spa should be drained through valve exiting re-circulation pump in the spa equipment room or sump pump.
- 3) Note: Use caution to drain spa in the winter months or rainy season when water table is at its highest. It is possible for the spa to float due to hydraulic pressure from surrounding water table. We advise that you consult with your local spa specialist prior to draining the spa.

C. SPA EQUIPMENT:

- 1) Clean filter cartridge at least once every month, or when needed; i.e., if water clarity does not improve after several days.
- 2) Keep area free and clear from leaves and debris build-up.
- 3) Keep area free and clear from flooding.

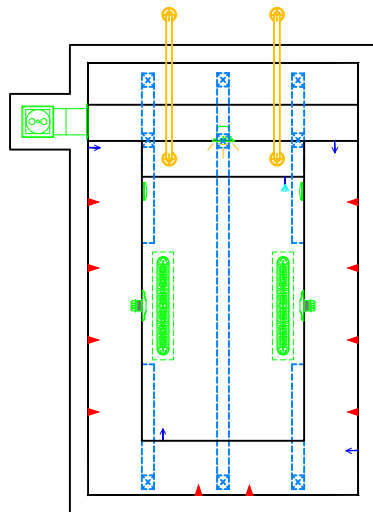
D. SPA LIGHT:

- 1) Spa light has to be on GFCI circuit. It is controlled at spa side with ON/OFF.

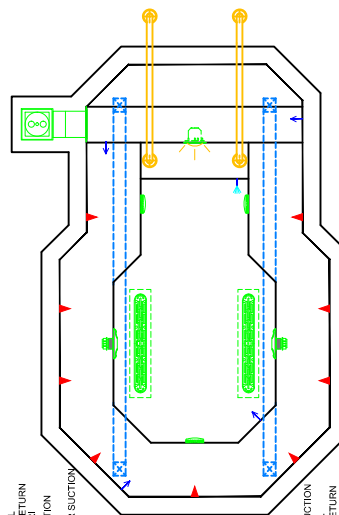
E. TILE SERVICING:

- 1) Contact manufacture when servicing tile or grout. @ (530) 534-9910

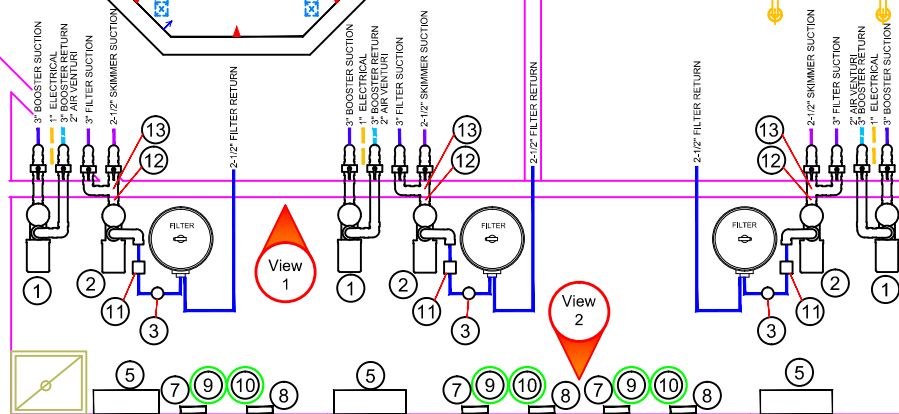
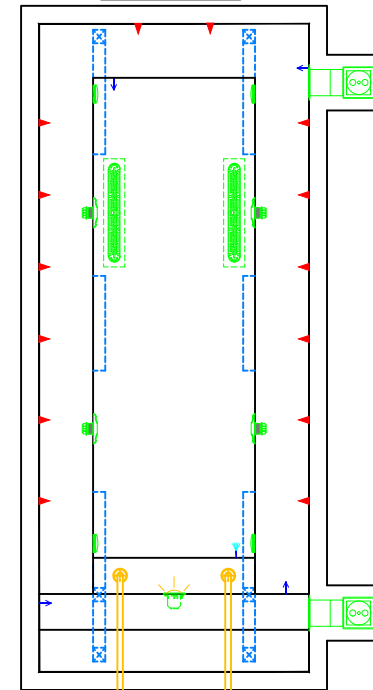
LEGACY 12

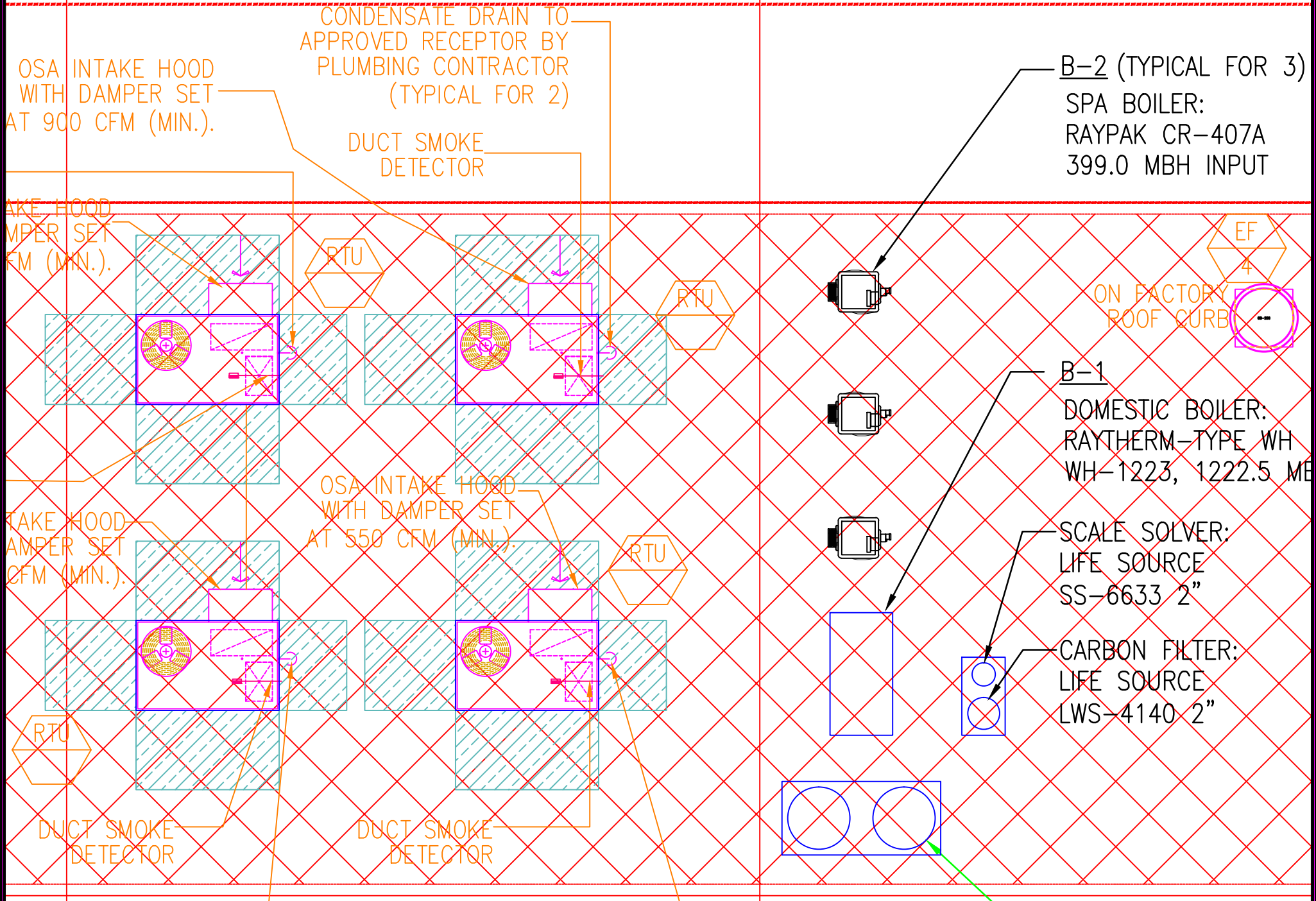


SWIM SPA 12



LEGACY 18





These drawings, concepts, and details contained herein are the original proprietary designs of **NESPA ENTERPRISES INC.**, developed over many years of experience in the industry and as such are protected by the copyright laws of the United States Government. Reproduction of any of the above without written permission to do so by **NESPA ENTERPRISES INC.**, is illegal.

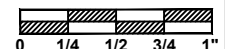
NESPA ENTERPRISES INC.
2800 Richter Ave. Ste. C Oroville, CA 95966
Office: (530) 534-9910 Fax: (530) 534-9915
E-Mail: jim@tiledspas.com Web Site: www.tiledspas.com



If printing as a PDF:

Page Scaling: None

SCALE
3/16" = 1'



DWG NAME

BURKE WILLIAMS TOPANGA

DATE

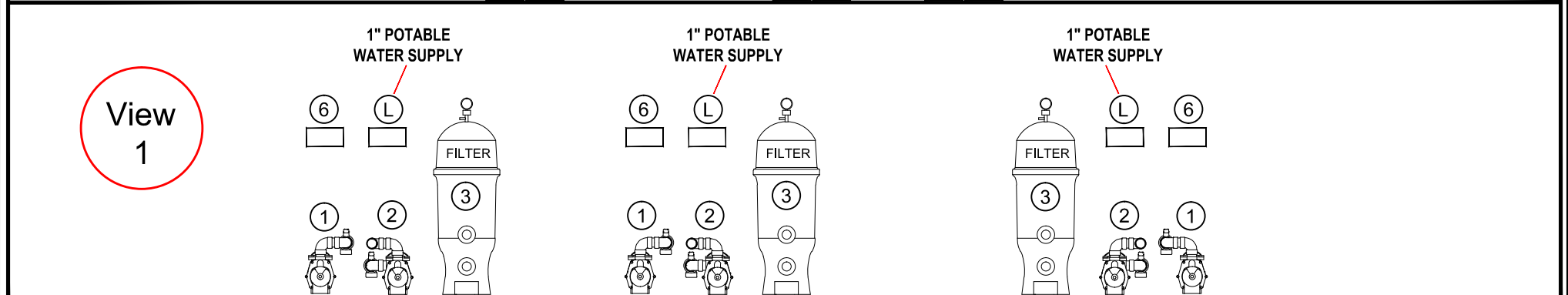
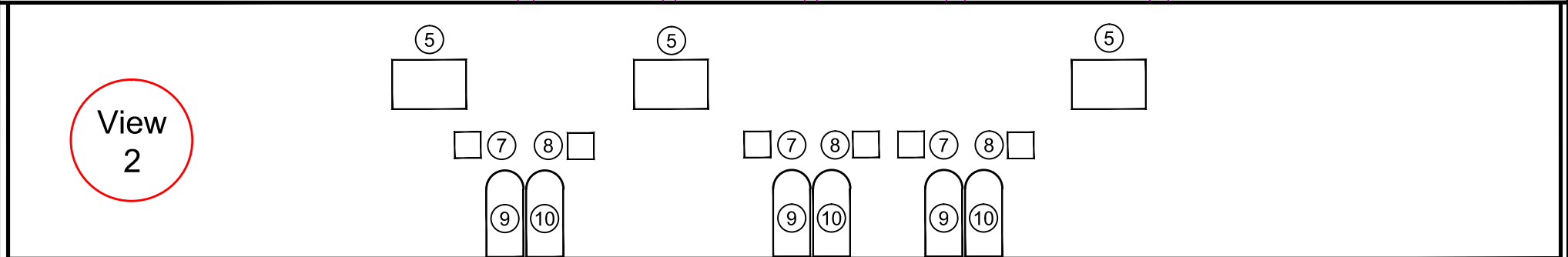
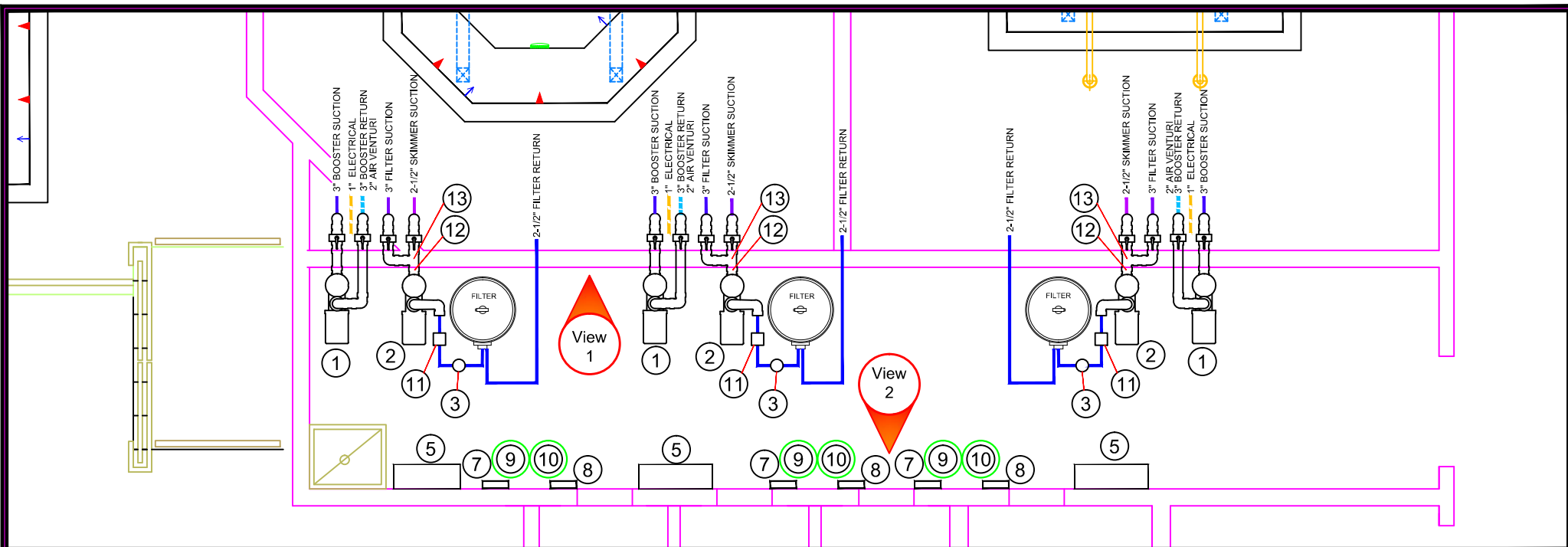
11/19/2014

DWG TYPE

Spa Layout (2)

SHEET

PAGE 1 OF 1



These drawings, concepts, and details contained herein are the original proprietary designs of **NESPA ENTERPRISES INC.**, developed over many years of experience in the industry and as such are protected by the copyright laws of the United States Government. Reproduction of any of the above without written permission to do so by **NESPA ENTERPRISES INC.**, is illegal.

NESPA ENTERPRISES INC.
 2800 Richter Ave. Ste. C Oroville, CA 95966
 Office: (530) 534-9910 Fax: (530) 534-9915
 E-Mail: jim@tiledspas.com Web Site: www.tiledspas.com



If printing as a PDF:
 Page Scaling:
 DWG NAME **BURKE WILLIAMS TOPANGA**

SCALE
 1/4" = 1'
 DATE **11/19/2014**

DWG TYPE
Spa EQ
 SHEET
PAGE 1 OF 1

SPA EQUIPMENT

1. BOOSTER PUMP- PENTAIR WHISPERFLOW - 2HP MODEL WFE-8X
2. CIRCULATION PUMP-PENTAIR WHISPERFLOW - 1-1/2HP MODEL WFE-6X
3. FILTER AND INFLUENT PRESSURE GAUGE- PENTAIR CLEAN AND CLEAR PLUS MODEL CCP-320
4. HEATER- RAYPAK NATURAL GAS MODEL C-R407A-EN-X-010230 LOW NOX ASME 399 BTU
5. CONTROL PANEL- PENTAIR COMPOOL MODEL LX 820, WITH EMERG. SHUT OFF
6. AUTOFILL- ZODIAC LEVELOR MODEL K-1100
7. CHEMICAL PUMPS- STENNER MODEL 45M 1 3LBS. PER DAY
8. CHEMICAL CONTROLLER-PENTAIR INTELLICHEM, #521355.
9. CHEMICAL CONTAINMENT TANKS- PENTAIR CHLORINE TANK #521397
10. CHEMICAL CONTAINMENT TANKS- PENTAIR ACID TANK #521378
11. FLOWMETER- BLUE WHITE MODEL F-250
12. VACUUM GAUGE
13. ANTI ENTRAPMENT VACUUM RELEASE, VACLESS MODEL SVRS10ADJ
14. SIGNAGE COMPLIANT WITH COUNTY OF LOS ANGELES -DEPARTMENT OF PUBLIC HEALTH ENVIRONMENTAL HEALTH-RECREATIONAL WATERS PROGRAM SWIMMING POOL PLAN APPROVAL REQUIREMENTS.
 1. POOL CAPACITY SIGN
 2. NO DIVING SIGN
 3. NO LIFEGUARD SIGN
 4. ARTIFICIAL RESPIRATION AND CARDIOPULMONARY RESUSITATION SIGN
 5. EMERGENCY SIGN
 6. SPA WARNING SIGN
 7. EMERGENCY SHUT-OFF SWITCH SIGN
 8. DIARRHEA NOTICE SIGNAGE

SPA EQUIPMENT MANUFACTURER LINKS

- BOOSTER PUMP- PENTAIR CHALLENGER 3HP MODEL CHII-N1-3 FE 3 132
<http://www.pentairpool.com/products/pumps-inground-challenger-high-flow-pumps-23.htm>
- CIRCULATION PUMP-PENTAIR WHISPERFLOW 1HP MODEL WFE-4X
<http://www.pentairpool.com/products/pumps-inground-whisperflo-high-performance-pump-193.htm>
- FILTER AND INFLUENT PRESSURE GAUGE- PENTAIR CLEAN AND CLEAR PLUS MODEL CCP-320
<http://www.pentairpool.com/products/filters-cartridge-clean-clear-plus-cartridge-filters-27.htm>
- HEATER- RAYPAK NATURAL GAS MODEL C-R407A-EN-X-010230 LOW NOX ASME 399 BTU
<http://www.raypak.com/product.aspx?id=9E2AE95B-2AB1-4B62-BDCB-D0492BD719B1>
- CONTROL PANEL- PENTAIR COMPOOL MODEL LX 820, WITH EMERG. SHUT OFF
<http://pentaircommercial.com/products/automation-lx80-lx820-systems-92.htm>
- AUTOFILL- ZODIAC LEVELOR MODEL K-1100
<http://www.zodiacpoolsystems.com/Products/Water-Leveling/K-1100.aspx>
- CHEMICAL PUMPS- STENNER MODEL 45M 1 3LBS. PER DAY
<http://stenner-pumps.com>
- CHEMICAL CONTROLLER-PENTAIR INTELLICHEM, #521355.
<http://www.pentairpool.com/pdfs/IntelliChemDS.pdf>
- CHEMICAL CONTAINMENT TANKS - PENTAIR CHLORINE TANK #521397 AND PENTAIR ACID TANK #521378
<http://www.pentairpool.com/products/automation-intellichem-chemical-controller-435.htm>
- CHEMICAL TEST KIT- TAYLOR MODEL-K2000 DPD FOR CHLORINE,PHENOL RED FOR ACID
https://www.taylor technologies.com/products_kitinfo.asp?KitID=2223
- FLOWMETER- BLUE WHITE MODEL F250
http://www.blwhite.com/products/VariableArea/F-300/pitot_productpage.asp
- VACUUM GAUGE
<http://www.grainger.com/product/Vacuum-Gauge-4FMF8?searchQuery=4fmf8>
- VACLESS ANTI ENTRAPMENT VACUUM RELEASE
<http://www.Vacless.com>

These drawings, concepts, and details contained herein are the original proprietary designs of **NESPA ENTERPRISES INC.**, developed over many years of experience in the industry and as such are protected by the copyright laws of the United States Government. Reproduction of any of the above without written permission to do so by **NESPA ENTERPRISES INC.**, is illegal.

NESPA ENTERPRISES INC.

2800 Richter Ave. Ste. C Oroville, CA 95966

Office: (530) 534-9910

Fax: (530) 534-9915

E-Mail: jim@tiledspas.com Web Site: www.tiledspas.com



If printing as a PDF:

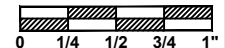
Page Scaling:

DWG NAME

BURKE WILLIAMS TOPANGA

SCALE

19/64" = 1'



DATE

11/19/2014

DWG TYPE

Spa EQ (2)

SHEET

PAGE 1 OF 1

SPECIFICATIONS	
SHELL WEIGHT:	4000 LBS.
WATER WEIGHT:	17511 LBS.
TOTAL SHELL & WATER WEIGHT:	21510.9 LBS.
WATER VOLUME:	351 Cu.Ft.
WATER GALLONS:	2625 GAL.
SURFACE AREA:	135.0 SQ. FT.
ICC ES LISTED #:	PMG-1161

NESPA ENTERPRISES, Inc.



ICC ES Listed
PMG-1161

WATERPROOF SKID SUPPORT
STRUCTURE ATTACHED TO
SPA AT NESPA FACTORY

☑️ *SKIDS SUPPLIED
BY NESPA

LIGHT NICHE

SPA BRIGHT, 120 V,
100 WATT, 50' CORD,
U.L. APPROVED

MAIN DRAIN



AquaStar 32CDFLR, 32" Channel Drain,
Approved Max Flow Rate Floor = 238 GPM
@ 3.4 fpm Wall = 136 GPM @ 1.9 fpm
Complies w/ ANSI / ASME A112.19.8
& NSF / ANSI 18-2011

MAIN DRAIN PUMP



Nespa AquaStar Approved Pump
IAPMO Approval # SP4900

SIDEWALL SUCTION



Paramount SDX 10"
HIGH FLOW SAFETY DRAIN
Area of Opening = 43.201 sq.in.
Floor = 200 GPM @ 1.485 fpm
Wall = 192 GPM @ 1.426 fpm
V.G.B. Approved Safety Drain

EQUALIZER



6" Round Hockey Puck
AquaStar 618PH400
Sumpluss Suction Outlet
Floor 177 GPM
Wall 122 GPM
Complies w/
ANSI / ASME A112.19.8
& NSF / ANSI 18-2011

SKIMMER



HAYWARD SP-1084FVE
SURFACE SKIMMER
W/ EQUALIZERS,
NSF / ANSI 50 - 2012

JET



HYDRO INLETS
1-1/2" WATER - 1-1/2" AIR
HYDROAIR #10-5100
COMPLIES W/ ANSI CODE ASME A112.19.8-07
UL APPROVED

RETURN

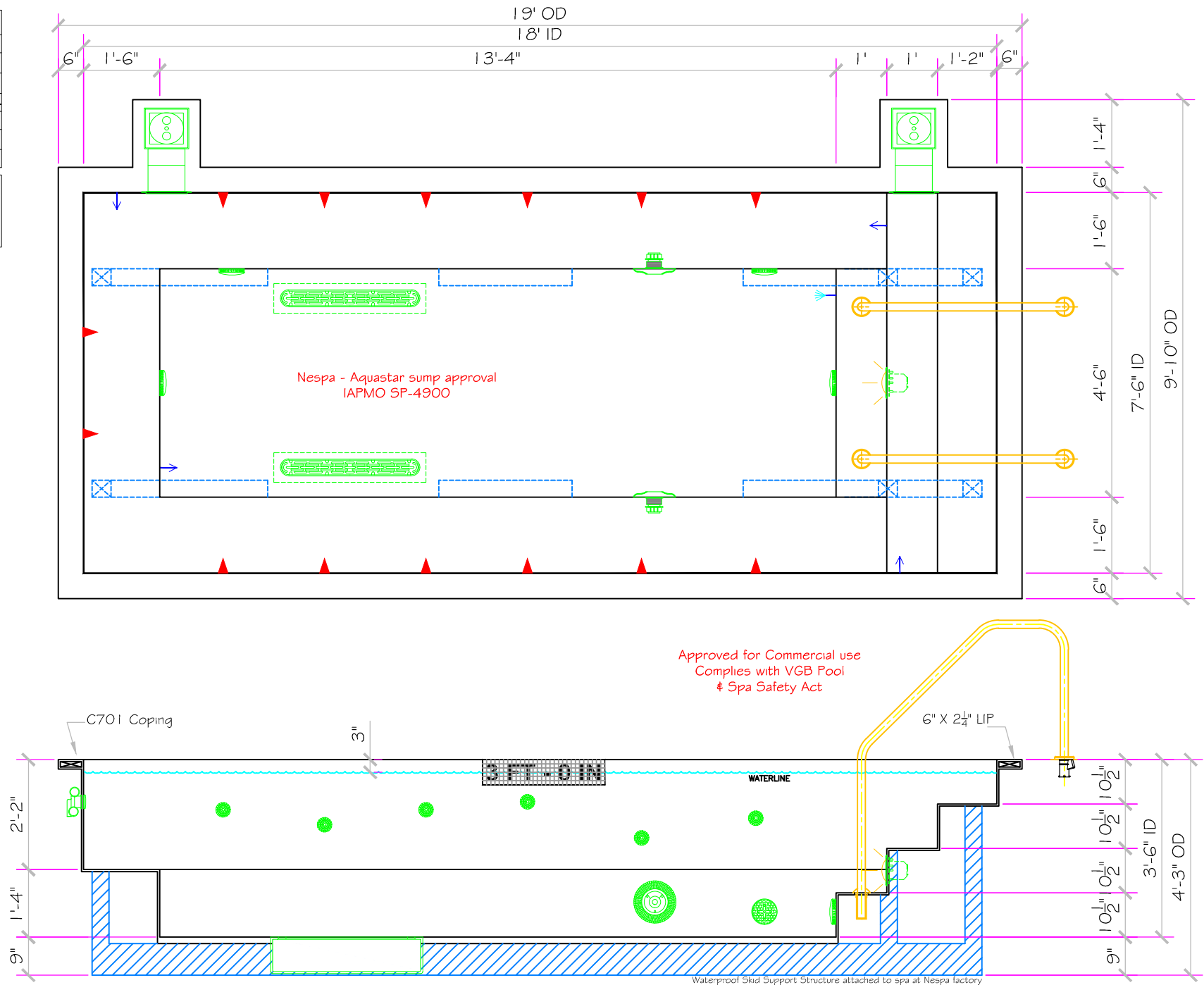


INLET FITTINGS
1-1/2" WALL TYPE W/ EYEBALL
HYDROAIR #10-300
COMPLIES W/ ANSI CODE ASME A112.19.8-07
UL APPROVED

FILL



INLET FITTINGS
1-1/2" WALL TYPE W/ EYEBALL
HYDROAIR #10-300
COMPLIES W/ ANSI CODE ASME A112.19.8-07
UL APPROVED



These drawings, concepts, and details contained herein are the original proprietary designs of **NESPA ENTERPRISES INC.**, developed over many years of experience in the industry and as such are protected by the copyright laws of the United States Government. Reproduction of any of the above without written permission to do so by **NESPA ENTERPRISES INC.**, is illegal.

NESPA ENTERPRISES INC.

2800 Richter Ave. Ste. C Oroville, CA 95966

Office: (530) 534-9910

Fax: (530) 534-9915

E-Mail: jim@tiledspas.com Web Site: www.tiledspas.com



If printing as a PDF:

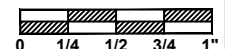
Page Scaling: None

DWG NAME

BURKE WILLIAMS TOPANGA

SCALE

3/8" = 1'



DATE

2/26/2015

DWG TYPE

Legacy 18'

SHEET

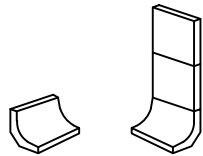
PAGE 1 OF 1

- #1 - FIELD TILE: Dal Tile 2 X 2 Mint Ice - D152
- #2 - WATERLINE (optional): Dal Tile Urban Putty 6461 (1)
- #3 - BENCH & STEP EDGES (optional): Dal Tile 2 X 2 Architectural Gray D109
- #4 - TILED LIP (optional): Dal Tile-C701-Urban Putty Speckle-D201

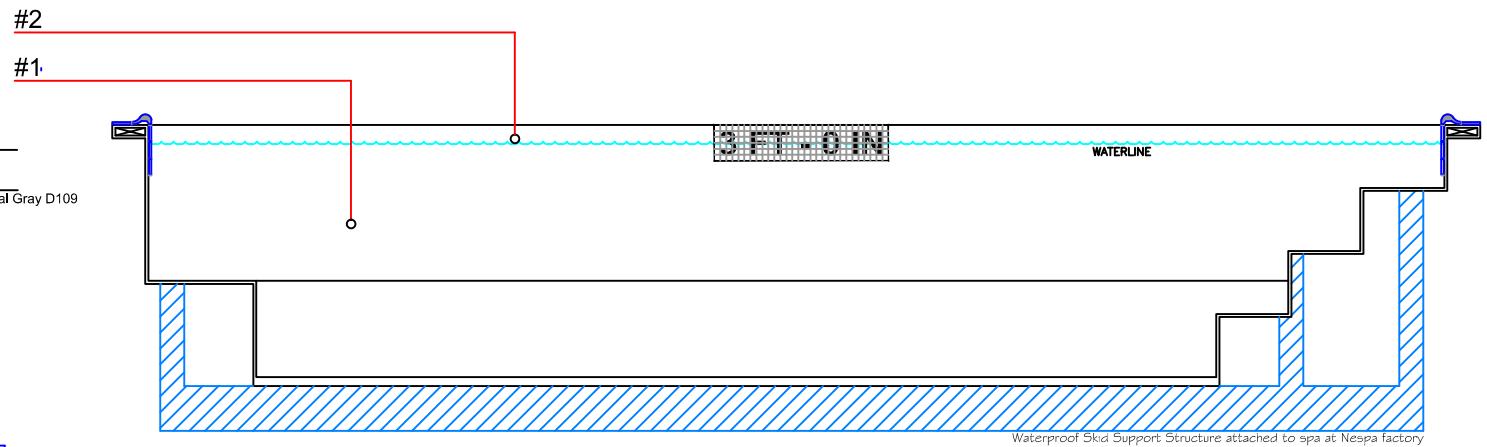
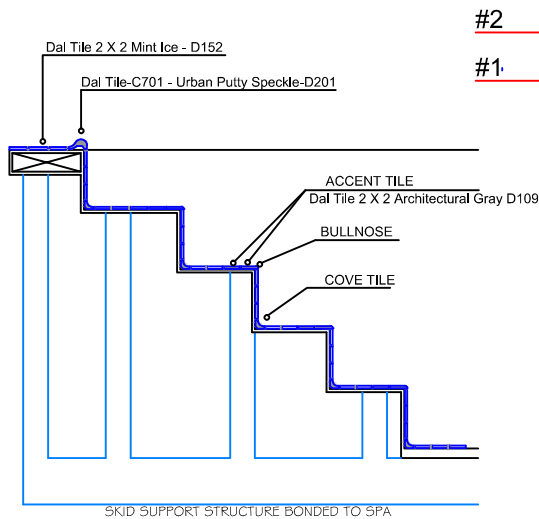
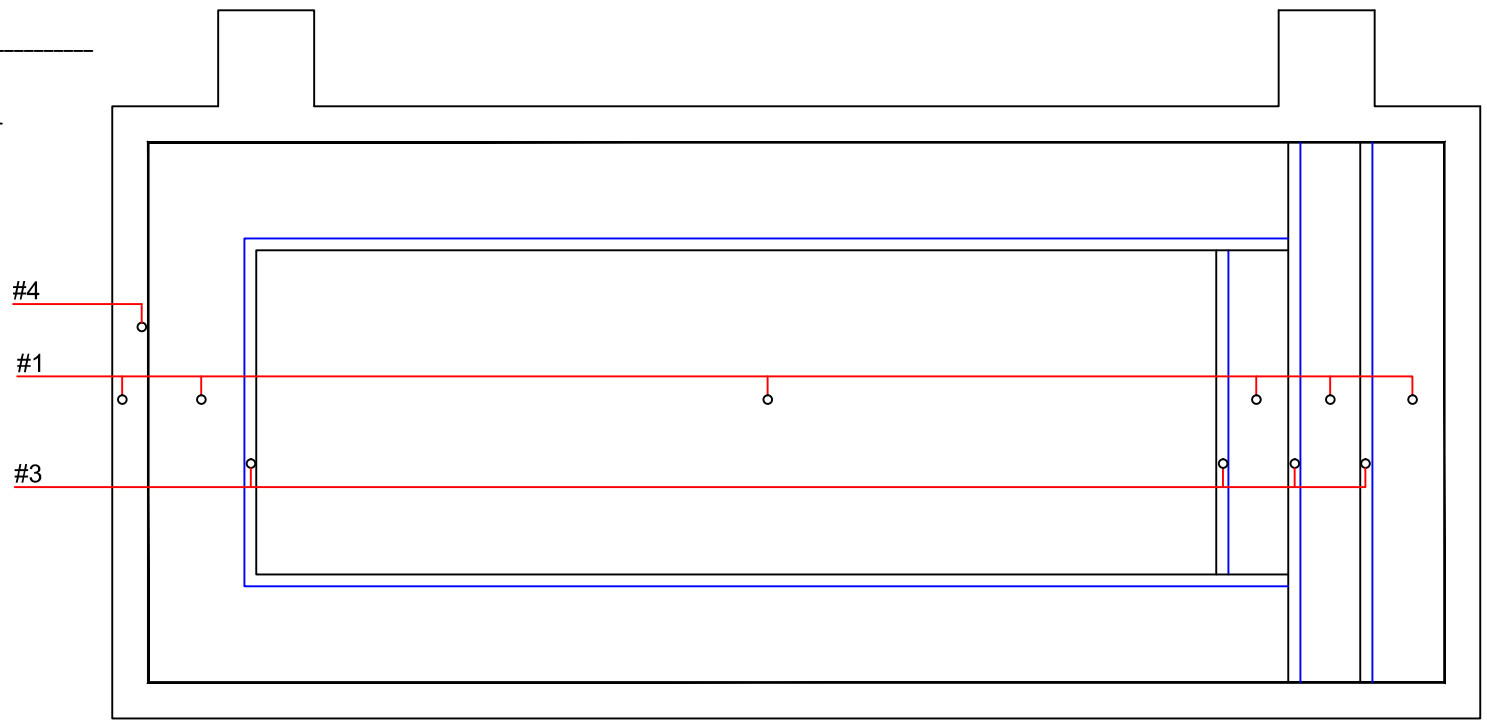
Date: _____

Approval: _____

- #1 - GROUT: _____
- #2 - GROUT: _____
- #3 - GROUT: _____



C-833
COVE
TILE



These drawings, concepts, and details contained herein are the original proprietary designs of **NESPA ENTERPRISES INC.**, developed over many years of experience in the industry and as such are protected by the copyright laws of the United States Government. Reproduction of any of the above without written permission to do so by **NESPA ENTERPRISES INC.**, is illegal.

NESPA ENTERPRISES INC.
2800 Richter Ave. Ste. C Oroville, CA 95966
Office: (530) 534-9910 Fax: (530) 534-9915
E-Mail: jim@tiledspas.com Web Site: www.tiledspas.com



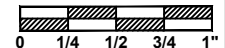
If printing as a PDF:

Page Scaling:

DWG NAME

BURKE WILLIAMS TOPANGA

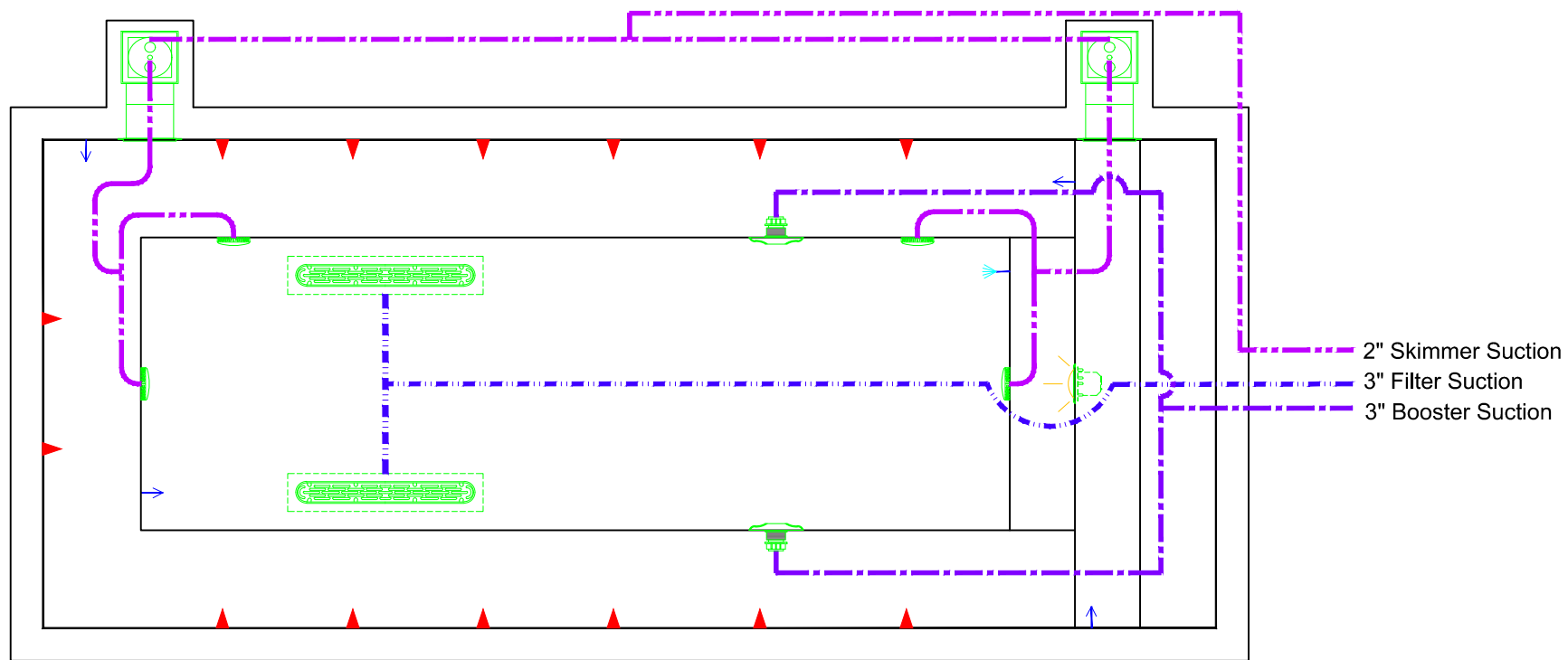
SCALE
3/8" = 1'



DATE

11/19/2014

DWG TYPE
Legacy 18 Tile
SHEET
PAGE 1 OF 1



These drawings, concepts, and details contained herein are the original proprietary designs of **NESPA ENTERPRISES INC.**, developed over many years of experience in the industry and as such are protected by the copyright laws of the United States Government. Reproduction of any of the above without written permission to do so by **NESPA ENTERPRISES INC.**, is illegal.

NESPA ENTERPRISES INC.

2800 Richter Ave. Ste. C Oroville, CA 95966

Office: (530) 534-9910

Fax: (530) 534-9915

E-Mail: jim@tiledspas.com Web Site: www.tiledspas.com



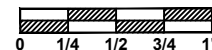
If printing as a PDF:

Page Scaling:

DWG NAME

BURKE WILLIAMS TOPANGA

SCALE
 3/8" = 1'



DATE

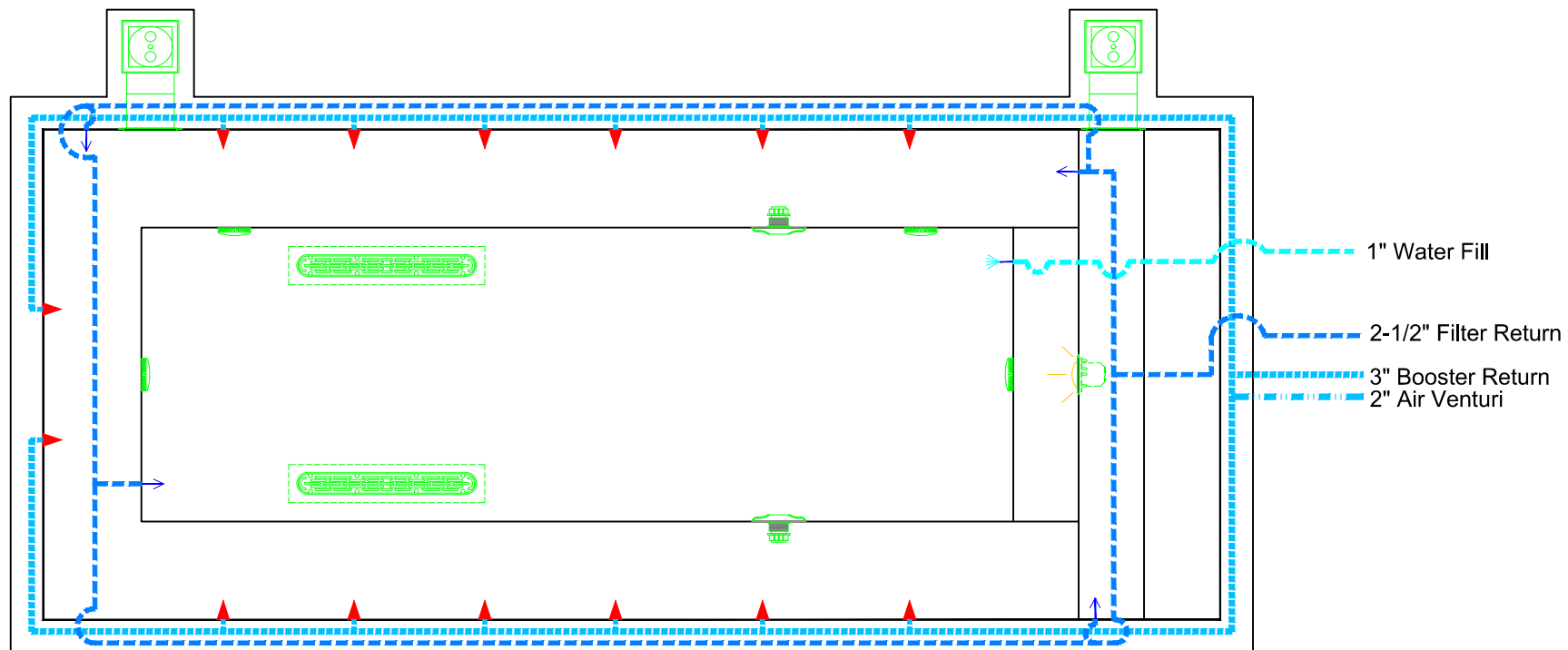
11/19/2014

DWG TYPE

Legacy 18 Suction

SHEET

PAGE 1 OF 1



These drawings, concepts, and details contained herein are the original proprietary designs of **NESPA ENTERPRISES INC.**, developed over many years of experience in the industry and as such are protected by the copyright laws of the United States Government. Reproduction of any of the above without written permission to do so by **NESPA ENTERPRISES INC.**, is illegal.

NESPA ENTERPRISES INC.

2800 Richter Ave. Ste. C Oroville, CA 95966

Office: (530) 534-9910

Fax: (530) 534-9915

E-Mail: jim@tiledspas.com Web Site: www.tiledspas.com



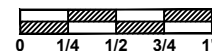
If printing as a PDF:

Page Scaling:

DWG NAME

BURKE WILLIAMS TOPANGA

SCALE
3/8" = 1'



DATE

11/19/2014

DWG TYPE

Legacy 18 Return

SHEET

PAGE 1 OF 1



Light 1" hub

Jet Air Venturi 2"

Pool Bond 2008

Reflection

Jet Return 3"

Pool water fill

Filter return 3"

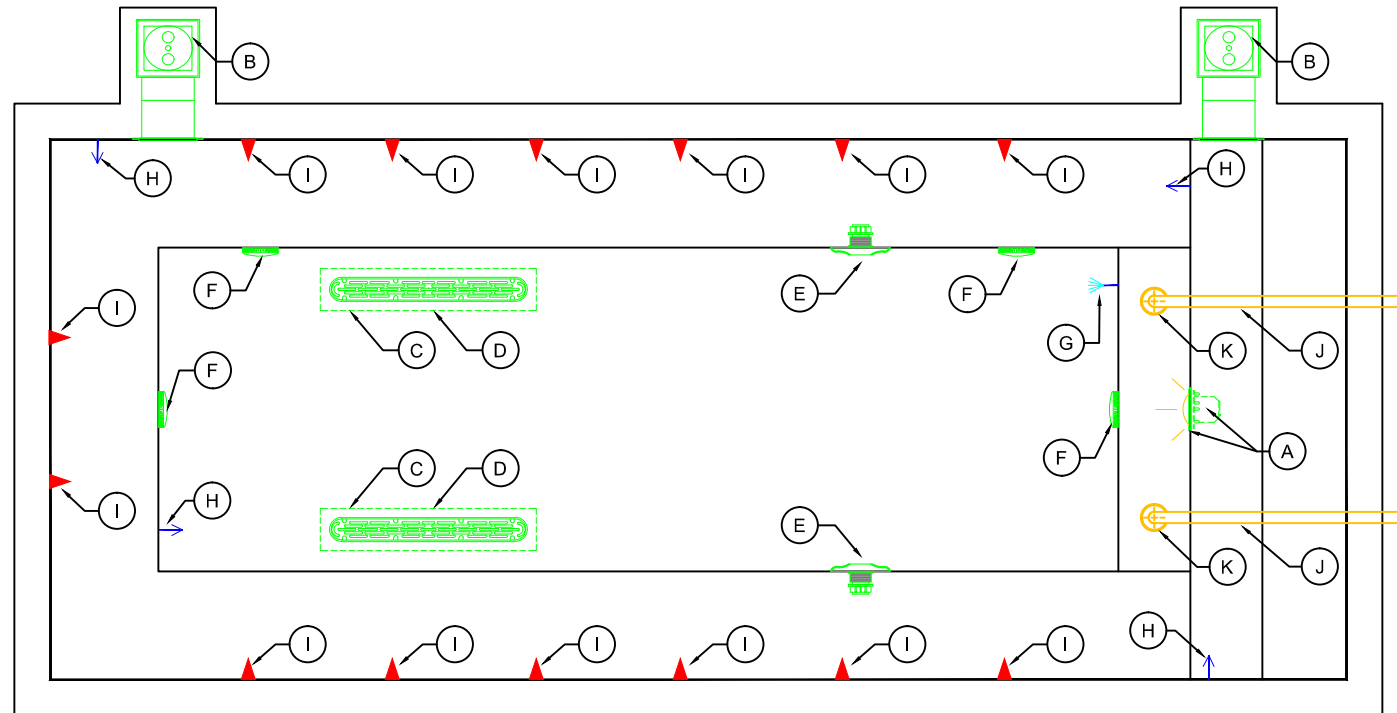
Booster Suction 3"

Skimmer 2"

Main Drain Suction 3"

EQUIPMENT LIST

ITEM	DESCRIPTION	MANUFACTURER	CATALOG NO.	QTY.
A	UNDERWATER LIGHT, 120 VOLT, 100 WATT, W/ 50 FT. OF CORD, U.L. LISTED.	PENTAIR	78106100	1
A	LIGHT NICHE, U.L. LISTED.	PENTAIR	78242200	1
B	SURFACE SKIMMER, AUTOMATIC.	HAYWARD	SP-1084FVE	2
C	AquaStar 32CDFLFR, 32" Channel Drain, Approved Max Flow Rate: Floor = 236 GPM @ 3.4 fps Wall = 136 GPM @ 1.9 fps V.G.B Approved Safety Drain	AQUASTAR	32CDFLFR	2
D	Nespa MAIN DRAIN SUMP IAPMO Approval # SP4900	NESPA	NESPA.32CD.4,2,2,2,5,2,5	2
E	Paramount SDX 10" Area of Opening = 43,201 in/sq Floor = 200 GPM @ 1,485 fps Wall = 192 GPM @ 1,426 fps Complies w/ ANSI / ASME A112.19.8 & NSF / ANSI 16-2011	PARAMOUNT	SDX-182-2212-01	2
F	6" Round Hockey Puck - Sumpless Suction Outlet Floor 177 GPM - Wall 122 GPM - Complies w/ ANSI / ASME A112.19.8 & NSF / ANSI 16-2011	AQUASTAR	6HPHAxxx	4
G	REFLECTION AND FILL PIPE FITTING W/ GRATE #SP1026	HAYWARD	SP-1023S	1
H	INLET FITTINGS, 1-1/2" CONNECTION W/ DIRECTIONAL EYEBALL FITTING, 3/4" ORIFICE #SP-1419-D.	HAYWARD	SP-1023S	4
I	HYDRO-INLET, 1-1/2" CONNECTION	HYDRO-AIR	10-5100	14
J	HAND RAIL, STAINLESS STEEL, W/ 1,90" TUBING W/ .065" WALL THICKNESS - 4' 0" LENGTH,	S. R. SMITH	3HR-4-065-1	2
K	WEDGE ANCHOR, BRONZE.	S. R. SMITH	IAS - 100	2



These drawings, concepts, and details contained herein are the original proprietary designs of **NESPA ENTERPRISES INC.**, developed over many years of experience in the industry and as such are protected by the copyright laws of the United States Government. Reproduction of any of the above without written permission to do so by **NESPA ENTERPRISES INC.**, is illegal.

NESPA ENTERPRISES INC.
2800 Richter Ave. Ste. C Oroville, CA 95966
Office: (530) 534-9910 Fax: (530) 534-9915
E-Mail: jim@tiledspas.com Web Site: www.tiledspas.com



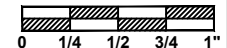
If printing as a PDF:

Page Scaling:

DWG NAME

BURKE WILLIAMS TOPANGA

SCALE
3/8" = 1'

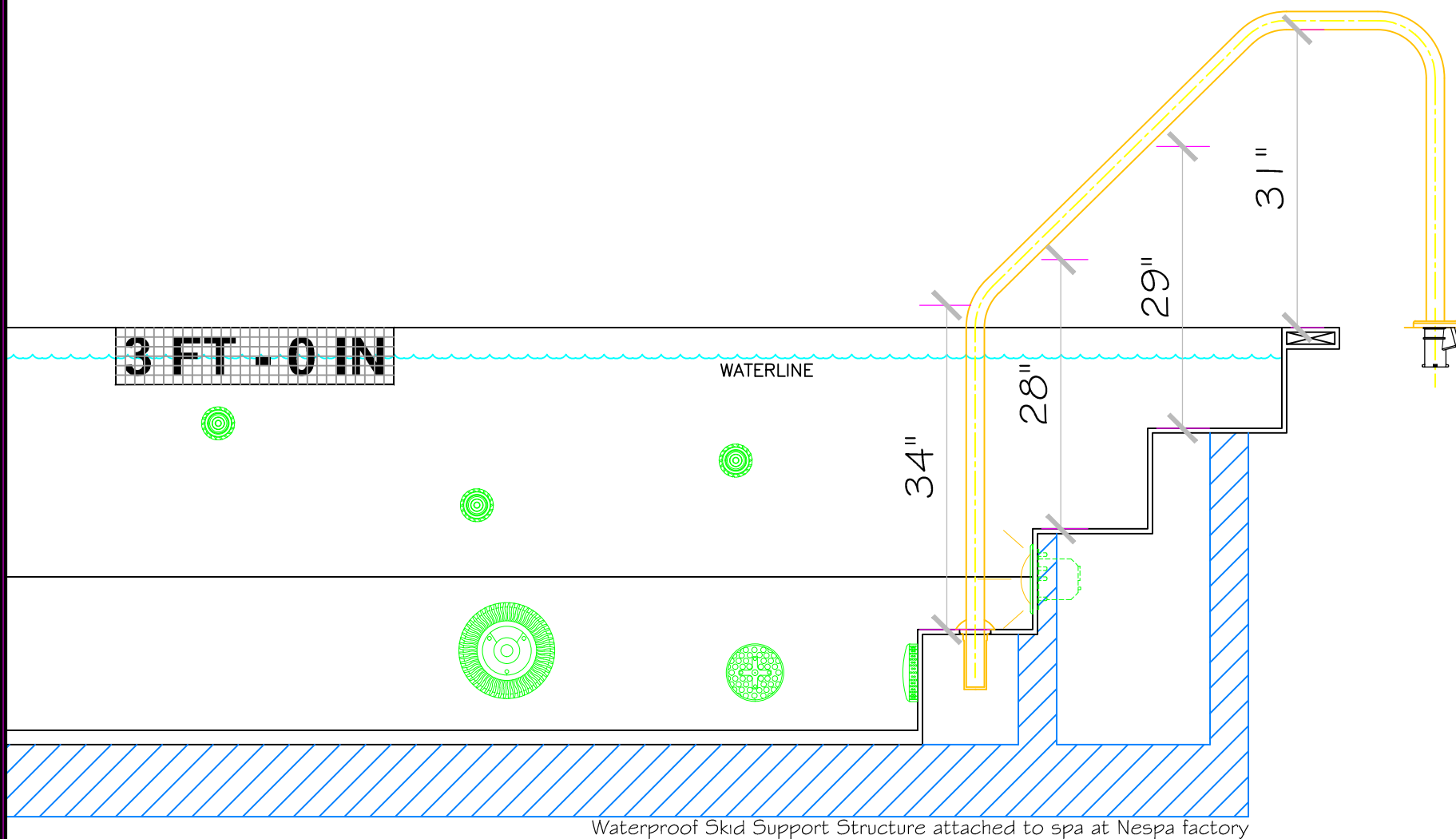


DATE

11/19/2014

DWG TYPE
Legacy 18 Spa EQ

SHEET
PAGE 1 OF 1



These drawings, concepts, and details contained herein are the original proprietary designs of **NESPA ENTERPRISES INC.**, developed over many years of experience in the industry and as such are protected by the copyright laws of the United States Government. Reproduction of any of the above without written permission to do so by **NESPA ENTERPRISES INC.**, is illegal.

NESPA ENTERPRISES INC.

2800 Richter Ave. Ste. C Oroville, CA 95966

Office: (530) 534-9910

Fax: (530) 534-9915

E-Mail: jim@tiledspas.com

Web Site: www.tiledspas.com



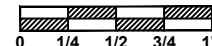
If printing as a PDF:

Page Scaling:

DWG NAME

BURKE WILLIAMS TOPANGA

SCALE
3/4" = 1'



DATE

11/19/2014

DWG TYPE

Legacy 18 Rail

SHEET

PAGE 1 OF 1

SHELL WEIGHT:	2300 LBS.
WATER WEIGHT:	9728 LBS.
TOTAL SHELL & WATER WEIGHT:	12028.3 LBS.
WATER VOLUME:	195 Cu.Ft.
WATER GALLONS:	1459 GAL.
SURFACE AREA:	77.6 SQ. FT.
ICC ES LISTED #:	PMG-1161



WATERPROOF SKID SUPPORT
STRUCTURE ATTACHED TO
SPA AT NESPA FACTORY

  *SKIDS SUPPLIED
BY NESPA

MAIN DRAIN

MAIN DRAIN SUMP

SIDEWALL SUCTION

EQUALIZER

SKIMMER

JET

RETURN

FILL

[illegible]

These drawings, concepts, and details contained herein are the original proprietary designs of **NESPA ENTERPRISES INC.**, developed over many years of experience in the industry and as such are protected by the copyright laws of the United States Government. Reproduction of any of the above without written permission to do so by **NESPA ENTERPRISES INC.**, is illegal.



PAGE 1 OF 1

- #1 - FIELD TILE: Dal Tile 2 X 2 Mint Ice - D152
- #2 - WATERLINE (optional): Dal Tile Urban Putty 6461 (1)
- #3 - BENCH & STEP EDGES (optional): Dal Tile 2 X 2 Architectural Gray D109
- #4 - TILED LIP (optional): Dal Tile-C701-Urban Putty Speckle-D201

Date: _____

Approval: _____

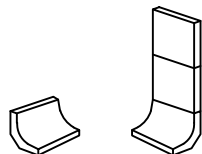
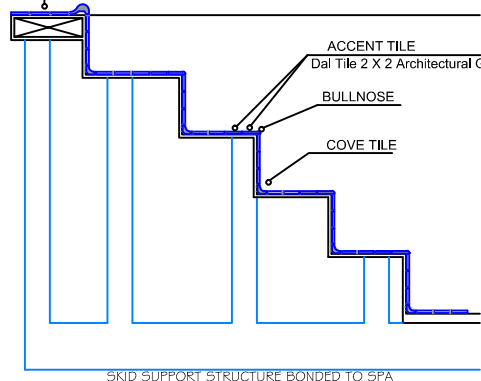
#1 - GROUT: _____

#2 - GROUT: _____

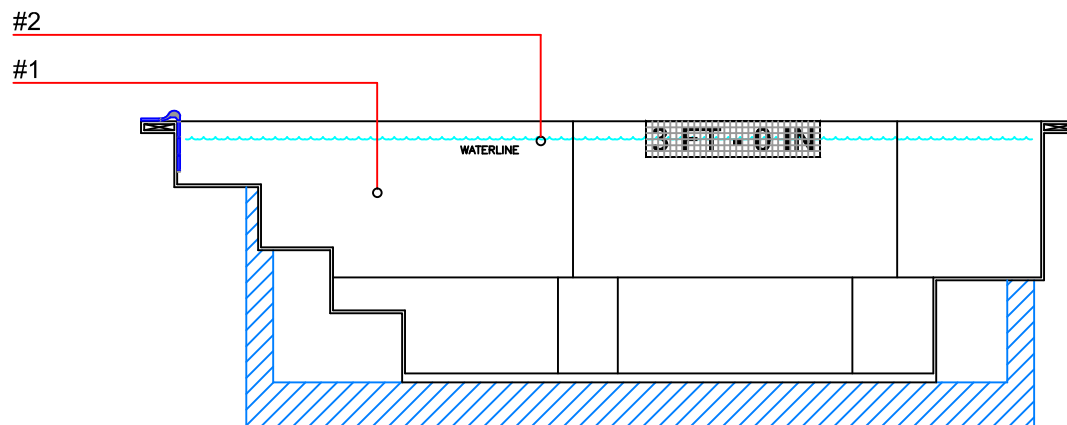
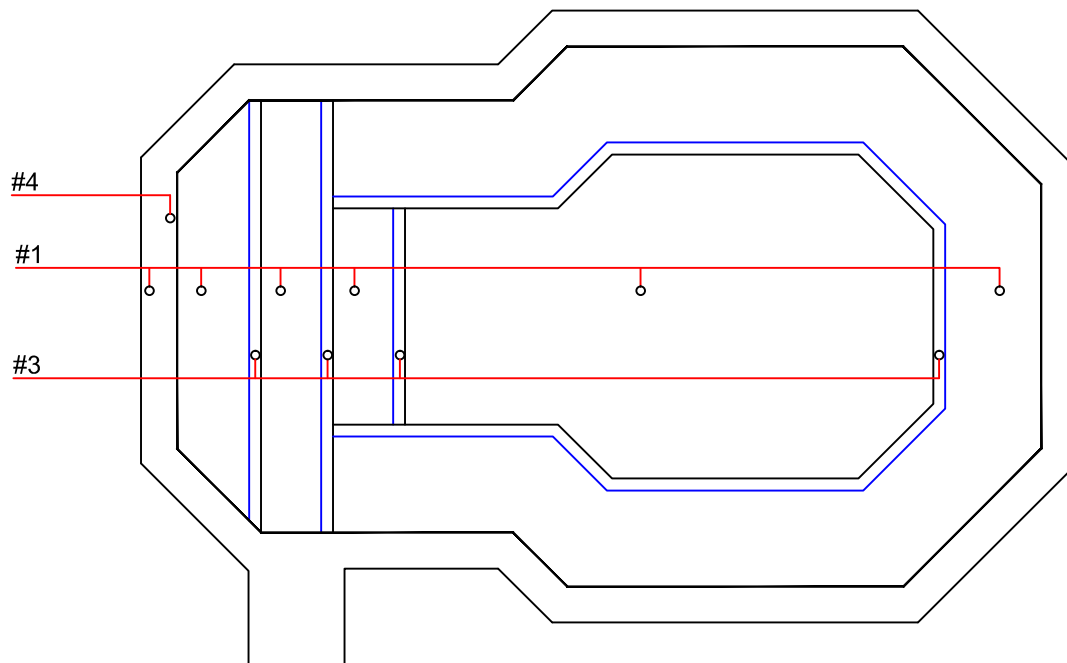
#3 - GROUT: _____

Dal Tile-C701 - Urban Putty Speckle-D201

Dal Tile 2 X 2 Mint Ice - D152



C-833
COVE
TILE



These drawings, concepts, and details contained herein are the original proprietary designs of **NESPA ENTERPRISES INC.**, developed over many years of experience in the industry and as such are protected by the copyright laws of the United States Government. Reproduction of any of the above without written permission to do so by **NESPA ENTERPRISES INC.**, is illegal.

NESPA ENTERPRISES INC.

2800 Richter Ave. Ste. C Oroville, CA 95966

Office: (530) 534-9910

Fax: (530) 534-9915

E-Mail: jim@tiledspas.com Web Site: www.tiledspas.com



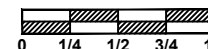
If printing as a PDF:

Page Scaling:

DWG NAME

BURKE WILLIAMS TOPANGA

SCALE
3/8" = 1'



DATE

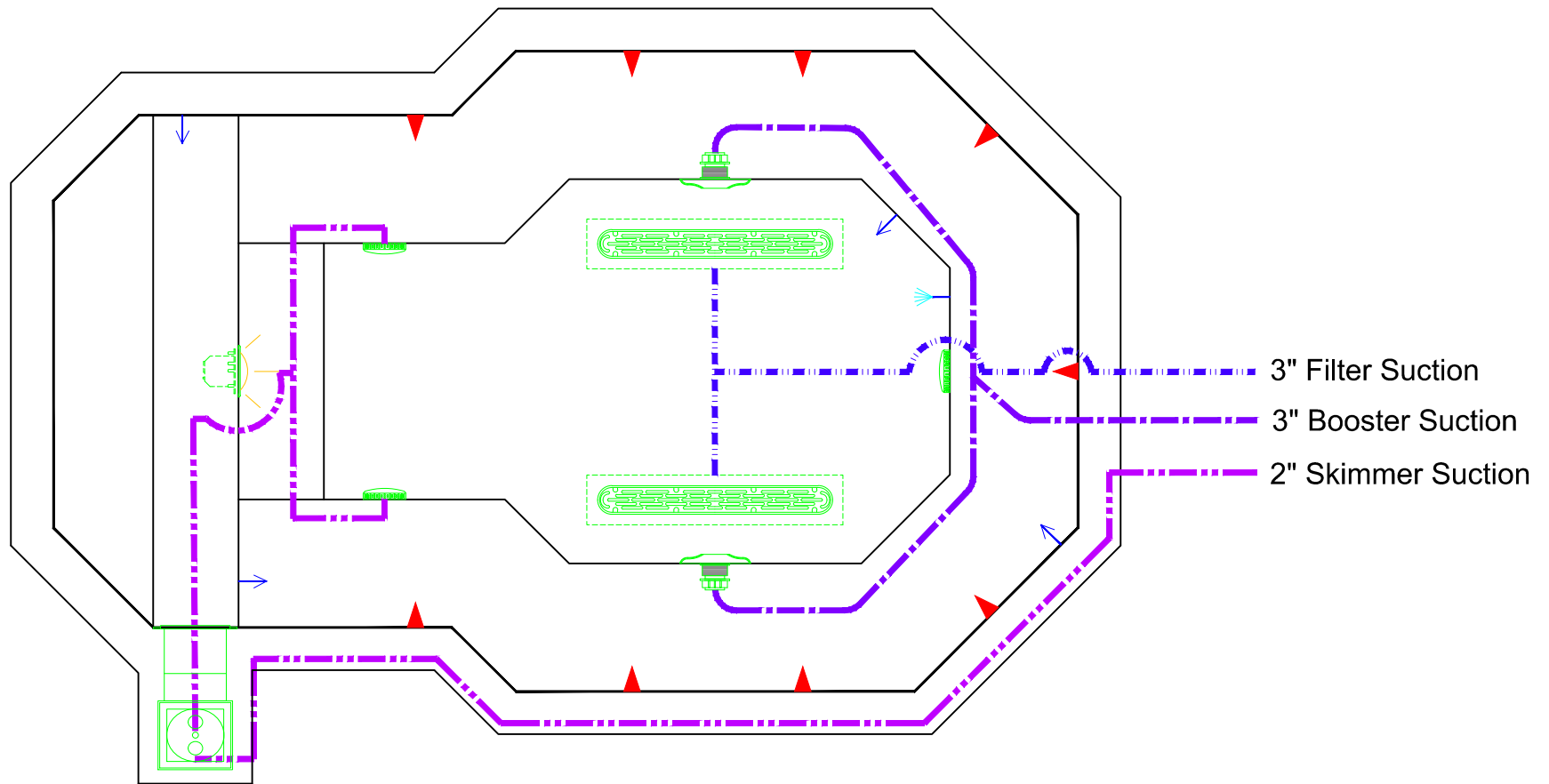
11/19/2014

DWG TYPE

Swim Spa 12 Tile

SHEET

PAGE 1 OF 1



These drawings, concepts, and details contained herein are the original proprietary designs of **NESPA ENTERPRISES INC.**, developed over many years of experience in the industry and as such are protected by the copyright laws of the United States Government. Reproduction of any of the above without written permission to do so by **NESPA ENTERPRISES INC.**, is illegal.

NESPA ENTERPRISES INC.

2800 Richter Ave. Ste. C Oroville, CA 95966

Office: (530) 534-9910

Fax: (530) 534-9915

E-Mail: jim@tiledspas.com Web Site: www.tiledspas.com



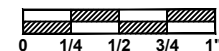
If printing as a PDF:

Page Scaling:

DWG NAME

BURKE WILLIAMS TOPANGA

SCALE
1/2" = 1'



DATE

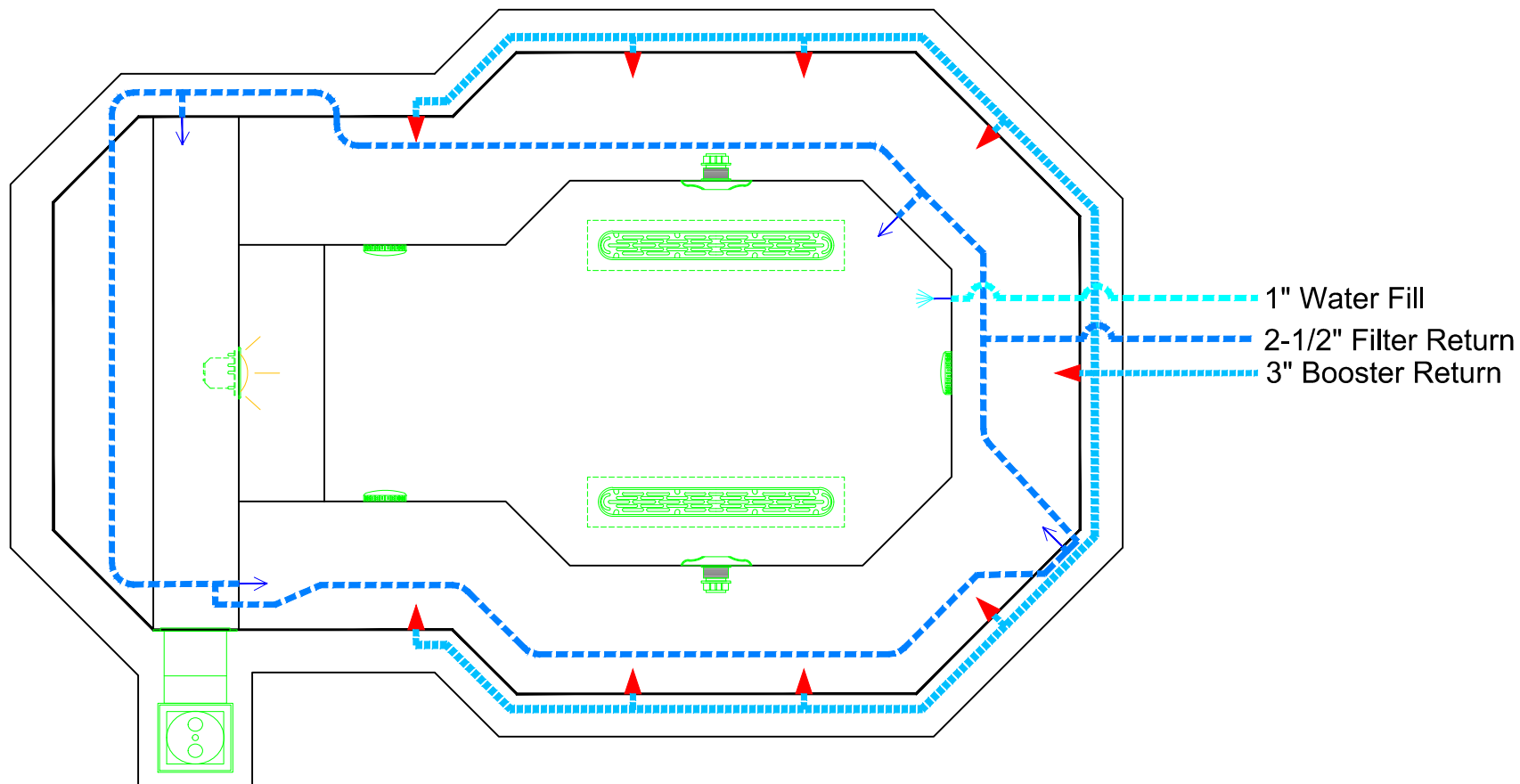
11/19/2014

DWG TYPE

Swim Spa 12 Suction

SHEET

PAGE 1 OF 1



These drawings, concepts, and details contained herein are the original proprietary designs of **NESPA ENTERPRISES INC.**, developed over many years of experience in the industry and as such are protected by the copyright laws of the United States Government. Reproduction of any of the above without written permission to do so by **NESPA ENTERPRISES INC.**, is illegal.

NESPA ENTERPRISES INC.

2800 Richter Ave. Ste. C Oroville, CA 95966

Office: (530) 534-9910

Fax: (530) 534-9915

E-Mail: jim@tiledspas.com Web Site: www.tiledspas.com



If printing as a PDF:

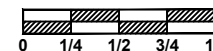
Page Scaling:

DWG NAME

BURKE WILLIAMS TOPANGA

SCALE

1/2" = 1'



DATE

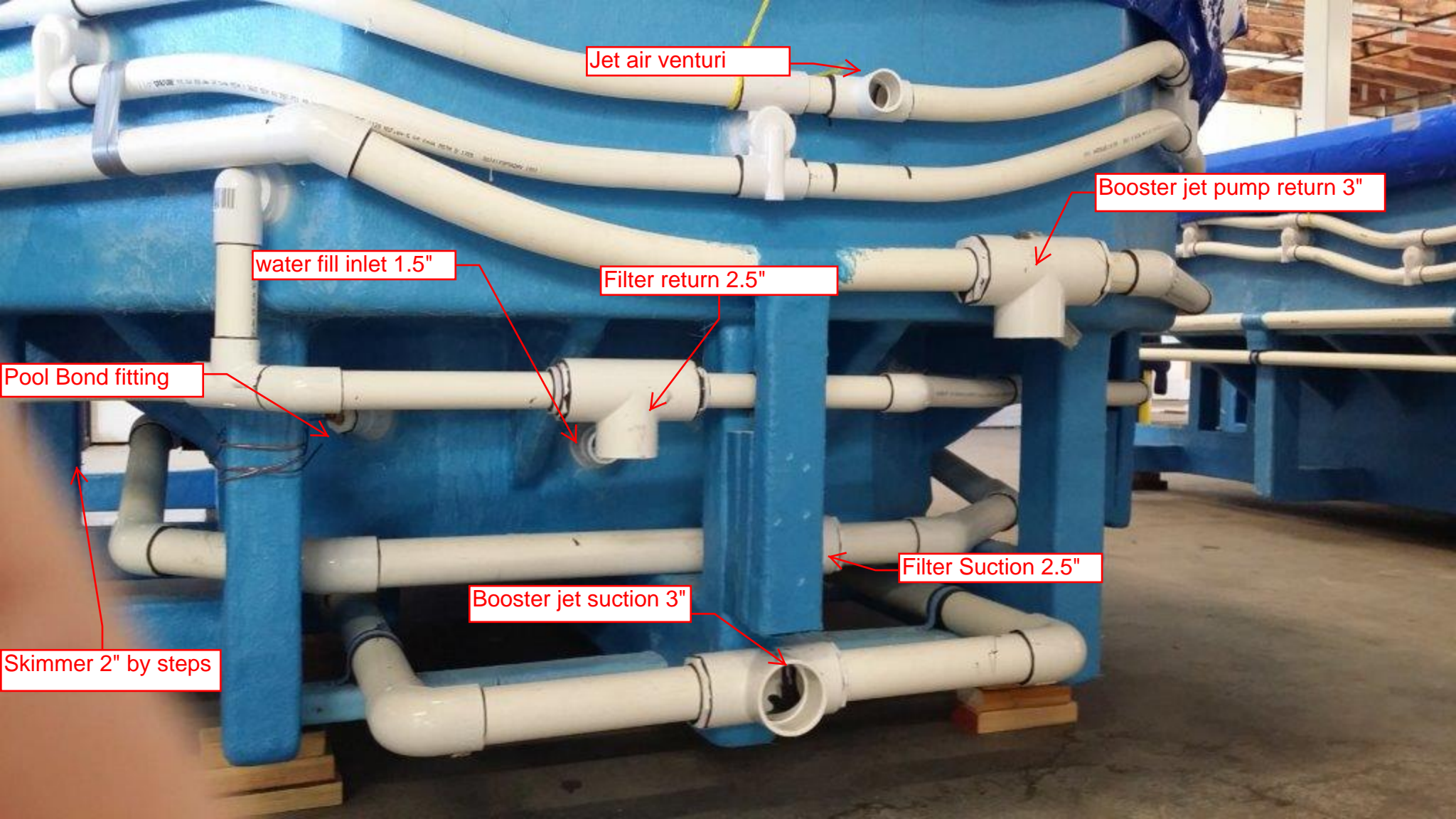
11/19/2014

DWG TYPE

Swim Spa 12 Return

SHEET

PAGE 1 OF 1



Jet air venturi

Booster jet pump return 3"

water fill inlet 1.5"

Filter return 2.5"

Pool Bond fitting

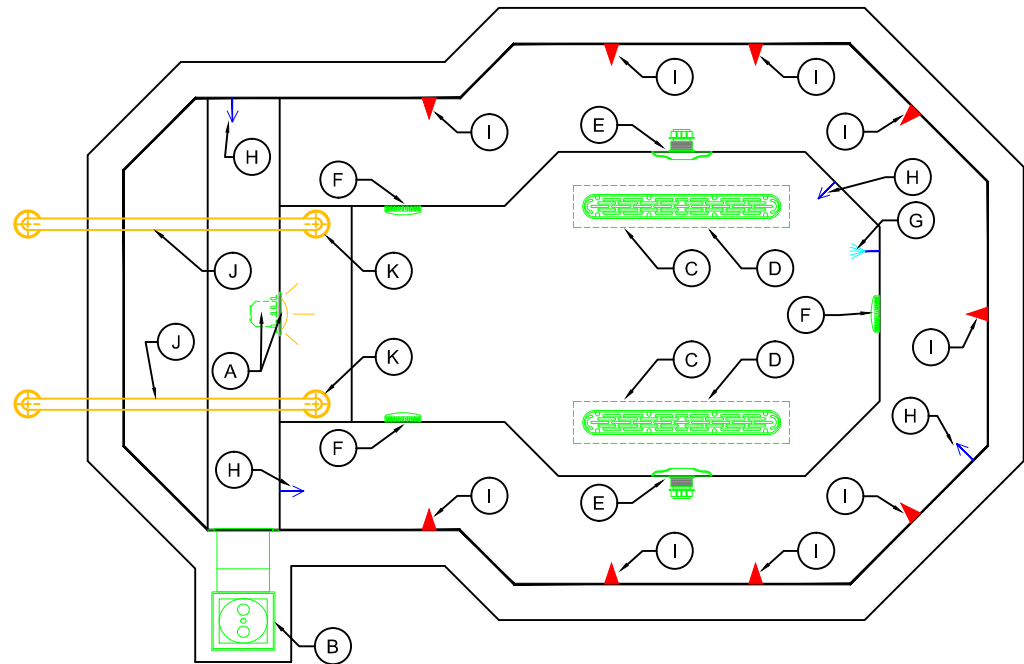
Filter Suction 2.5"

Booster jet suction 3"

Skimmer 2" by steps

EQUIPMENT LIST

ITEM	DESCRIPTION	MANUFACTURER	CATALOG NO.	QTY.
A	UNDERWATER LIGHT, 120 VOLT, 100 WATT, W/ 50 FT. OF CORD, U.L. LISTED.	PENTAIR	78106100	1
A	LIGHT NICHE, U.L. LISTED.	PENTAIR	78242200	1
B	SURFACE SKIMMER, AUTOMATIC.	HAYWARD	SP-1084FVE	2
C	<i>AquaStar</i> 32CDFLFR, 32" Channel Drain, Approved Max Flow Rate: Floor = 236 GPM @ 3.4 fps Wall = 136 GPM @ 1.9 fps V.G.B Approved Safety Drain	AQUASTAR	32CDFLFR	2
D	<i>Nespa</i> MAIN DRAIN SUMP IAPMO Approval # SP4900	NESPA	NESPA, 32CD, 4,2,2,2,5,2,5	2
E	<i>Paramount</i> SDX 10" Area of Opening = 43.201 in/sq Floor = 200 GPM @ 1.485 fps Wall = 192 GPM @ 1.426 fps Complies w/ ANSI / ASME A112.19.8 & NSF / ANSI 16-2011	PARAMOUNT	SDX-182-2212-01	2
F	6" Round Hockey Puck - <i>Sumpluss Suction Outlet</i> Floor 177 GPM - Wall 122 GPM - Complies w/ ANSI / ASME A112.19.8 & NSF / ANSI 16-2011	AQUASTAR	6HPHxxx	3
G	REFLECTION AND FILL PIPE FITTING W/ GRATE #SP1026	HAYWARD	SP-1023S	1
H	INLET FITTINGS, 1-1/2" CONNECTION W/ DIRECTIONAL EYEBALL FITTING, 3/4" ORIFICE #SP-1419-D.	HAYWARD	SP-1023S	4
I	HYDRO-INLET, 1-1/2" CONNECTION	HYDRO-AIR	10-5100	9
J	HAND RAIL, STAINLESS STEEL, W/ 1.90" TUBING W/ .065" WALL THICKNESS - 4' 0" LENGTH,	S. R. SMITH	3HR-4-065-1	2
K	WEDGE ANCHOR, BRONZE.	S. R. SMITH	IAS - 100	2



These drawings, concepts, and details contained herein are the original proprietary designs of **NESPA ENTERPRISES INC.**, developed over many years of experience in the industry and as such are protected by the copyright laws of the United States Government. Reproduction of any of the above without written permission to do so by **NESPA ENTERPRISES INC.**, is illegal.

NESPA ENTERPRISES INC.
 2800 Richter Ave. Ste. C Oroville, CA 95966
 Office: (530) 534-9910 Fax: (530) 534-9915
 E-Mail: jim@tiledspas.com Web Site: www.tiledspas.com



If printing as a PDF:

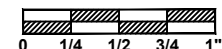
Page Scaling:

DWG NAME

BURKE WILLIAMS TOPANGA

SCALE

3/8" = 1'



DATE

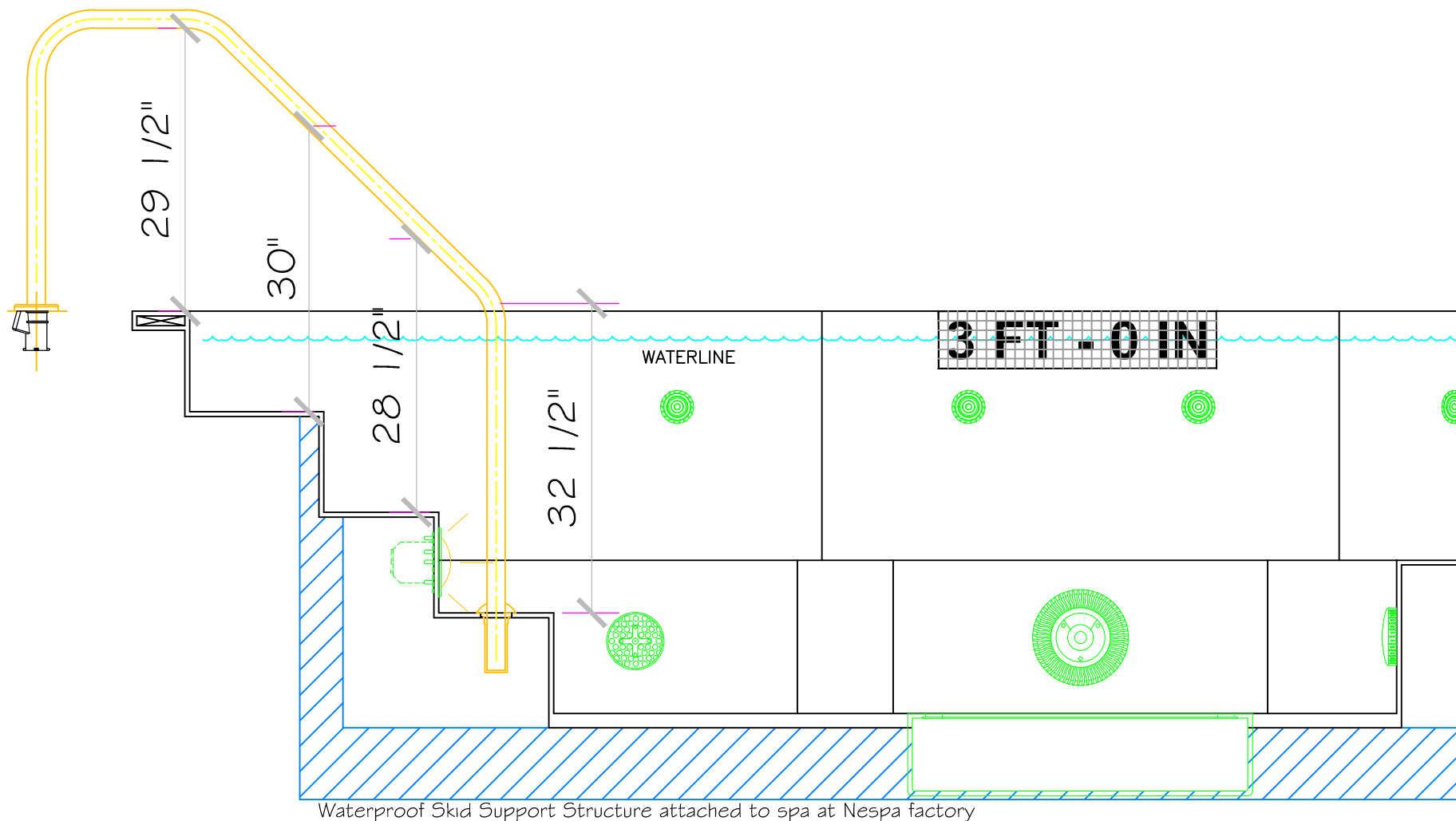
11/19/2014

DWG TYPE

Swim Spa 12 EQ

SHEET

PAGE 1 OF 1



SPECIFICATIONS

SHELL WEIGHT:	2850 LBS.
WATER WEIGHT:	11075 LBS.
TOTAL SHELL & WATER WEIGHT:	13925.3 LBS.
WATER VOLUME:	222 Cu.Ft.
WATER GALLONS:	1661 GAL.
SURFACE AREA:	90.0 SQ. FT.
ICC ES LISTED #:	PMG-1161

NESPA ENTERPRISES, Inc.



ICC ES Listed
PMG-1161

WATERPROOF SKID SUPPORT
STRUCTURE ATTACHED TO
SPA AT NESPA FACTORY

☒ ☐ "SKIDS SUPPLIED
BY NESPA"

LIGHT NICHE

SPR BRIGHT, 120 V,
100 WATT, 5' CORD,
UL APPROVED

MAIN DRAIN

AquaStar 32CFLFR, 32" Channel Drain,
Approved Max Flow Rate: Floor = 236 GPM
@ 3.4 fpm Wall = 136 GPM @ 1.9 fpm
Complies w/ ANSI / ASME A112.19.8
& NSF / ANSI 16-2011

MAIN DRAIN SUMP

Nespa Aquastar Approved Sump
IAPMO Approval # SP4900

SIDEWALL SECTION

Paramount SDX 10"
HIGH FLOW SAFETY DRAIN
Area of Opening = 43.201 in²
Floor = 200 GPM @ 1.485 fpm
Wall = 192 GPM @ 1.426 fpm
V.G.B Approved Safety Drain

EQUALIZER

6" Round Hookup Plug
AquaStar 6RPHR
Sumpless Suction Outfit
Floor 177 GPM
Wall 122 GPM
Complies w/
ANSI / ASME A112.19.8
& NSF / ANSI 16-2011

SKIMMER

HAYWARD SP-1084FVE
SURFACE SKIMMER
W/ EQUALIZERS
NSF / ANSI 50 - 2012

JET

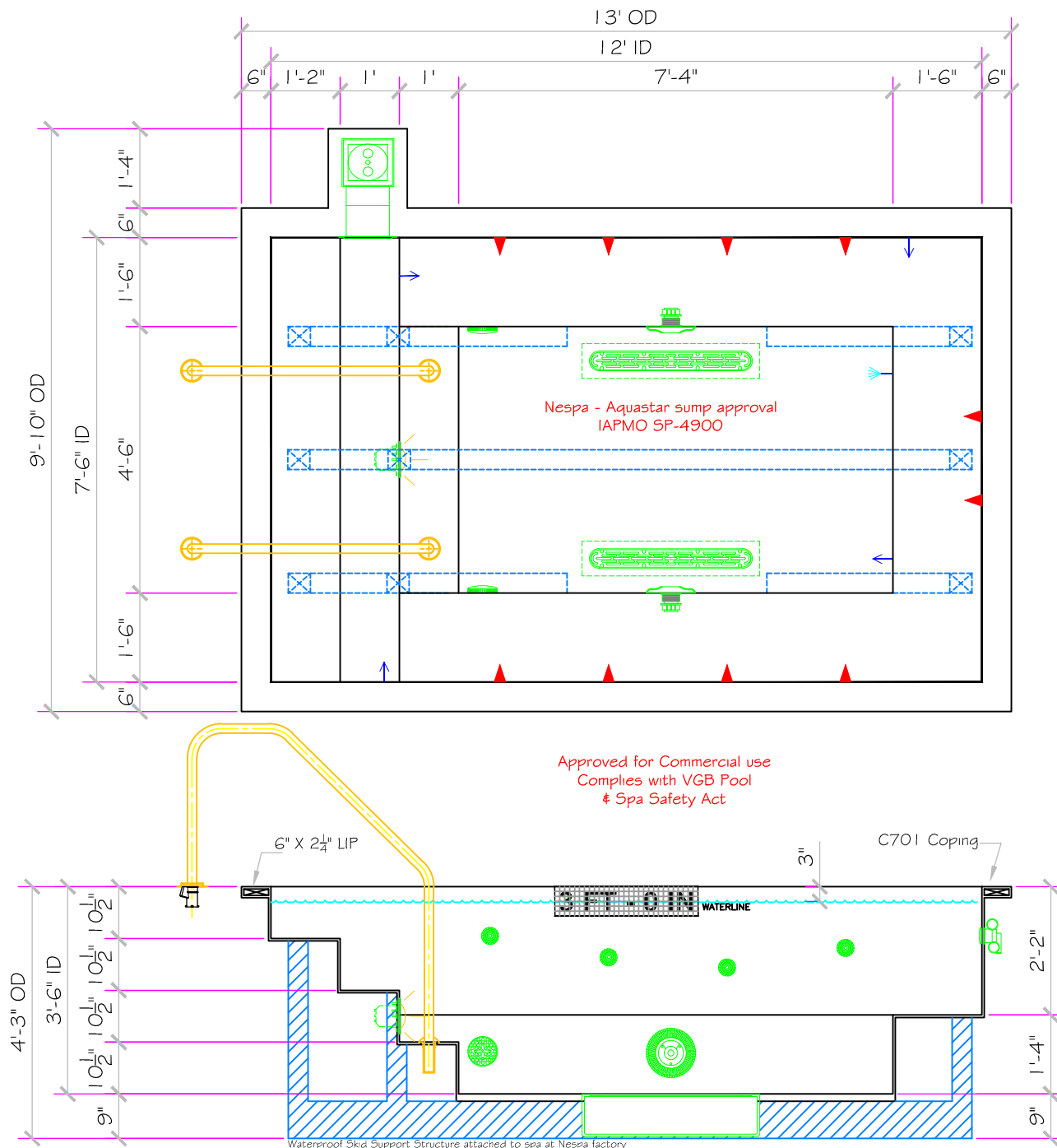
HYDRO INLETS
1-1/2" WATER = 1-1/2" AIR
HYDROAIR #10-510
COMPLIES W/ ANSI CODE ASME A112.19.8-07
UL APPROVED

RETURN

INLET FITTINGS
1-1/2" WALL TYPE W/ EYEBALL
HYDROAIR #10-350
COMPLIES W/ ANSI CODE ASME A112.19.8-07
UL APPROVED

FILL

INLET FITTINGS
1-1/2" WALL TYPE W/ EYEBALL
HYDROAIR #10-350
COMPLIES W/ ANSI CODE ASME A112.19.8-07
UL APPROVED



These drawings, concepts, and details contained herein are the original proprietary designs of **NESPA ENTERPRISES INC.**, developed over many years of experience in the industry and as such are protected by the copyright laws of the United States Government. Reproduction of any of the above without written permission to do so by **NESPA ENTERPRISES INC.**, is illegal.

NESPA ENTERPRISES INC.

2800 Richter Ave. Ste. C Oroville, CA 95966

Office: (530) 534-9910

Fax: (530) 534-9915

E-Mail: jim@tiledspas.com Web Site: www.tiledspas.com



If printing as a PDF:

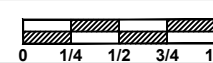
Page Scaling: None

DWG NAME

BURKE WILLIAMS TOPANGA

SCALE

3/8" = 1'



DATE

2/9/2015

DWG TYPE

Legacy 12'

SHEET

PAGE 1 OF 1

- #1 - FIELD TILE: Dal Tile 2 X 2 Mint Ice - D152
- #2 - WATERLINE (optional): Dal Tile Urban Putty 6461 (1)
- #3 - BENCH & STEP EDGES (optional): Dal Tile 2 X 2 Architectural Gray D109
- #4 - TILED LIP (optional): Dal Tile-C701-Urban Putty Speckle-D201

Date: _____

Approval: _____

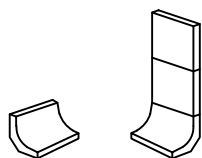
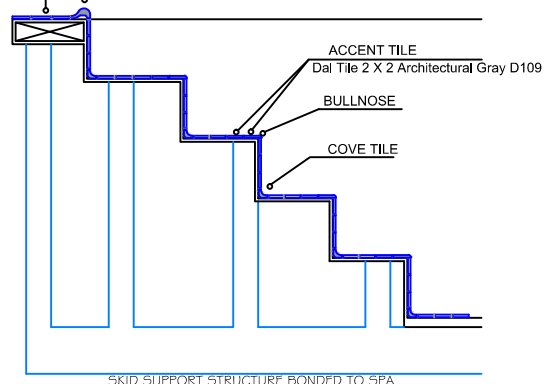
#1 - GROUT: _____

#2 - GROUT: _____

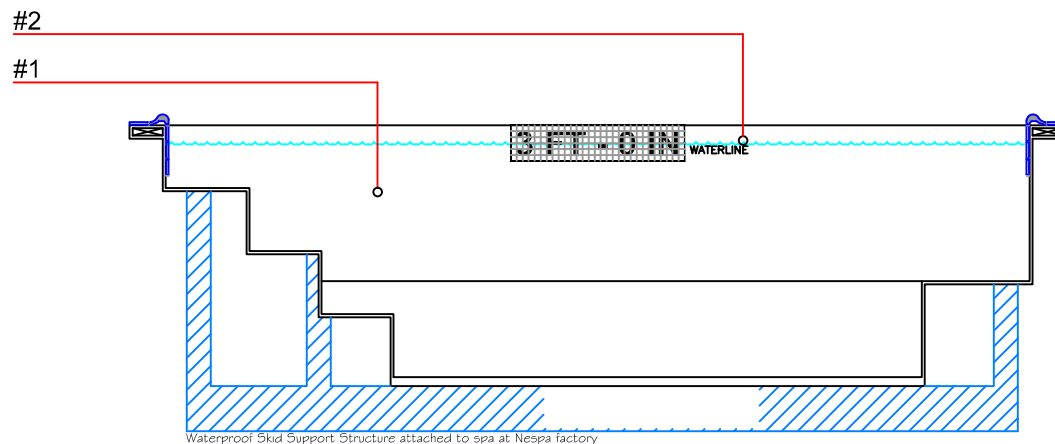
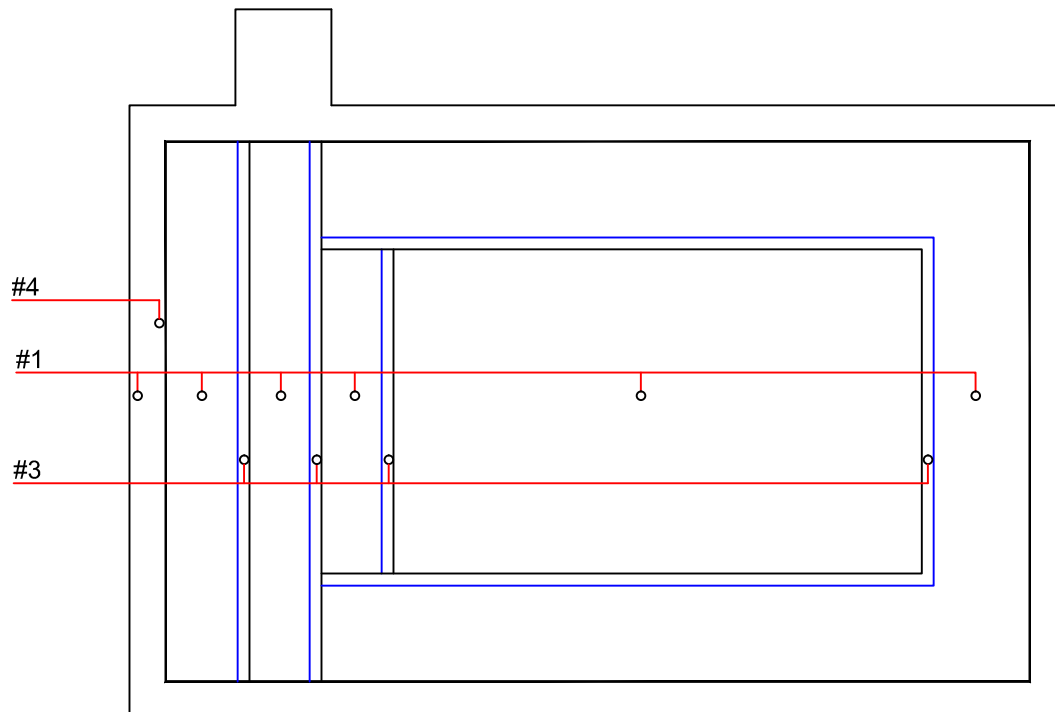
#3 - GROUT: _____

Dal Tile-C701 - Urban Putty Speckle-D201

Dal Tile 2 X 2 Mint Ice - D152



C-833
COVE
TILE



These drawings, concepts, and details contained herein are the original proprietary designs of **NESPA ENTERPRISES INC.**, developed over many years of experience in the industry and as such are protected by the copyright laws of the United States Government. Reproduction of any of the above without written permission to do so by **NESPA ENTERPRISES INC.**, is illegal.

NESPA ENTERPRISES INC.

2800 Richter Ave. Ste. C Oroville, CA 95966

Office: (530) 534-9910

Fax: (530) 534-9915

E-Mail: jim@tiledspas.com Web Site: www.tiledspas.com



If printing as a PDF:

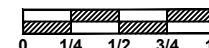
Page Scaling:

DWG NAME

BURKE WILLIAMS TOPANGA

SCALE

3/8" = 1'



DATE

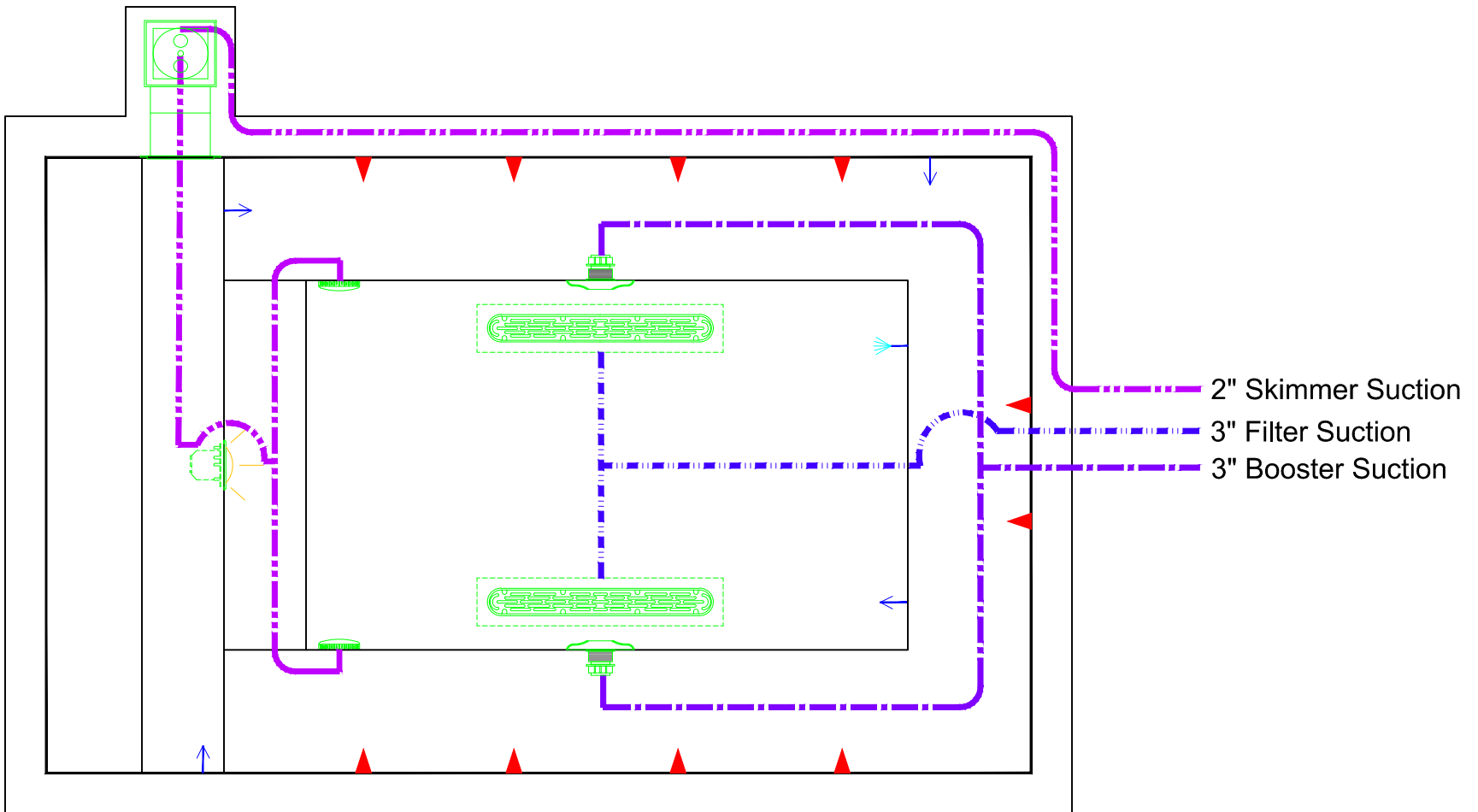
11/19/2014

DWG TYPE

Legacy 12 Tile

SHEET

PAGE 1 OF 1



These drawings, concepts, and details contained herein are the original proprietary designs of **NESPA ENTERPRISES INC.**, developed over many years of experience in the industry and as such are protected by the copyright laws of the United States Government. Reproduction of any of the above without written permission to do so by **NESPA ENTERPRISES INC.**, is illegal.

NESPA ENTERPRISES INC.

2800 Richter Ave. Ste. C Oroville, CA 95966

Office: (530) 534-9910

Fax: (530) 534-9915

E-Mail: jim@tiledspas.com Web Site: www.tiledspas.com



If printing as a PDF:

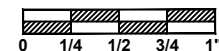
Page Scaling:

DWG NAME

BURKE WILLIAMS TOPANGA

SCALE

1/2" = 1'



DATE

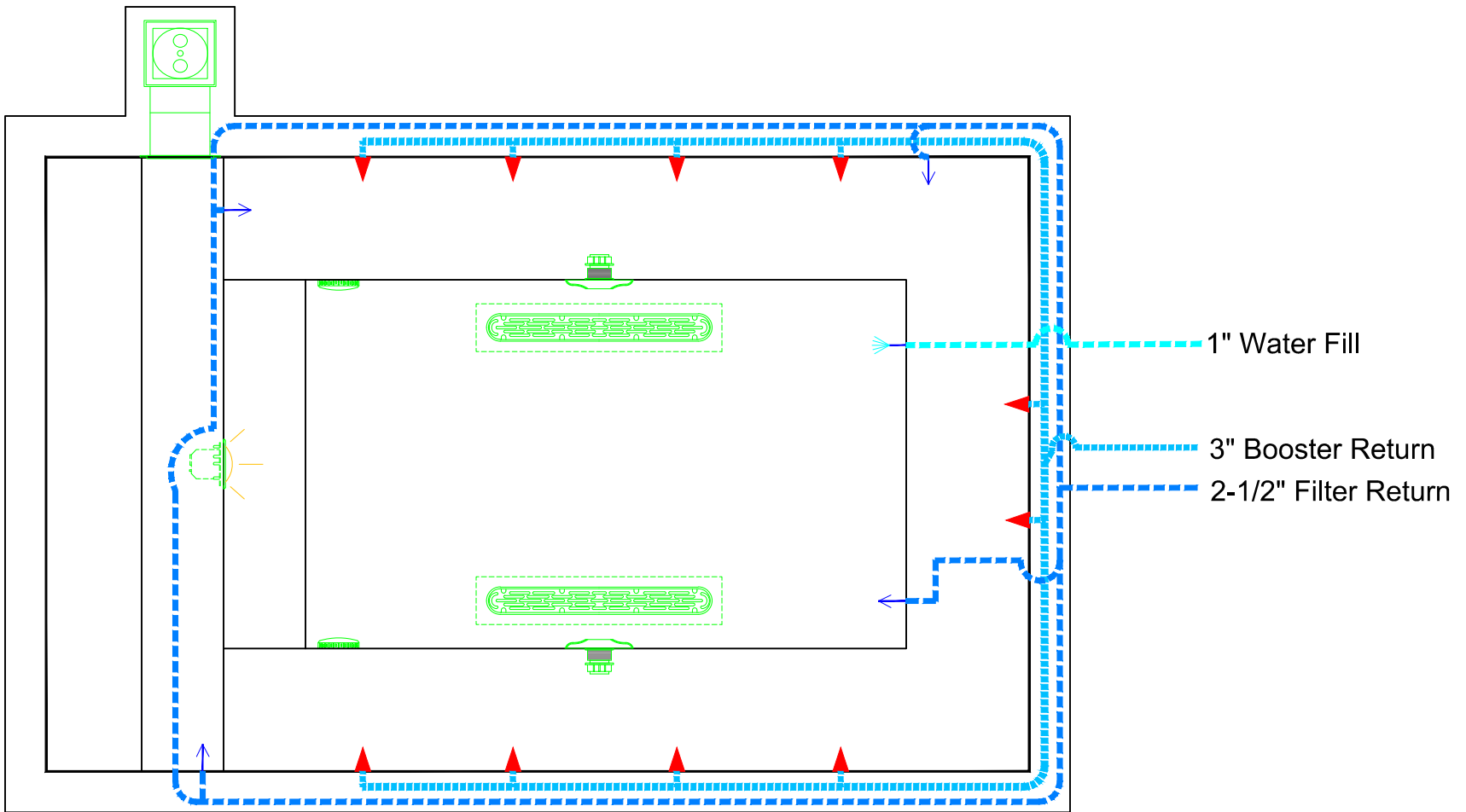
11/19/2014

DWG TYPE

Legacy 12 Suction

SHEET

PAGE 1 OF 1



These drawings, concepts, and details contained herein are the original proprietary designs of **NESPA ENTERPRISES INC.**, developed over many years of experience in the industry and as such are protected by the copyright laws of the United States Government. Reproduction of any of the above without written permission to do so by **NESPA ENTERPRISES INC.**, is illegal.

NESPA ENTERPRISES INC.

2800 Richter Ave. Ste. C Oroville, CA 95966

Office: (530) 534-9910

Fax: (530) 534-9915

E-Mail: jim@tiledspas.com Web Site: www.tiledspas.com



If printing as a PDF:

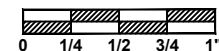
Page Scaling:

DWG NAME

BURKE WILLIAMS TOPANGA

SCALE

1/2" = 1'



DATE

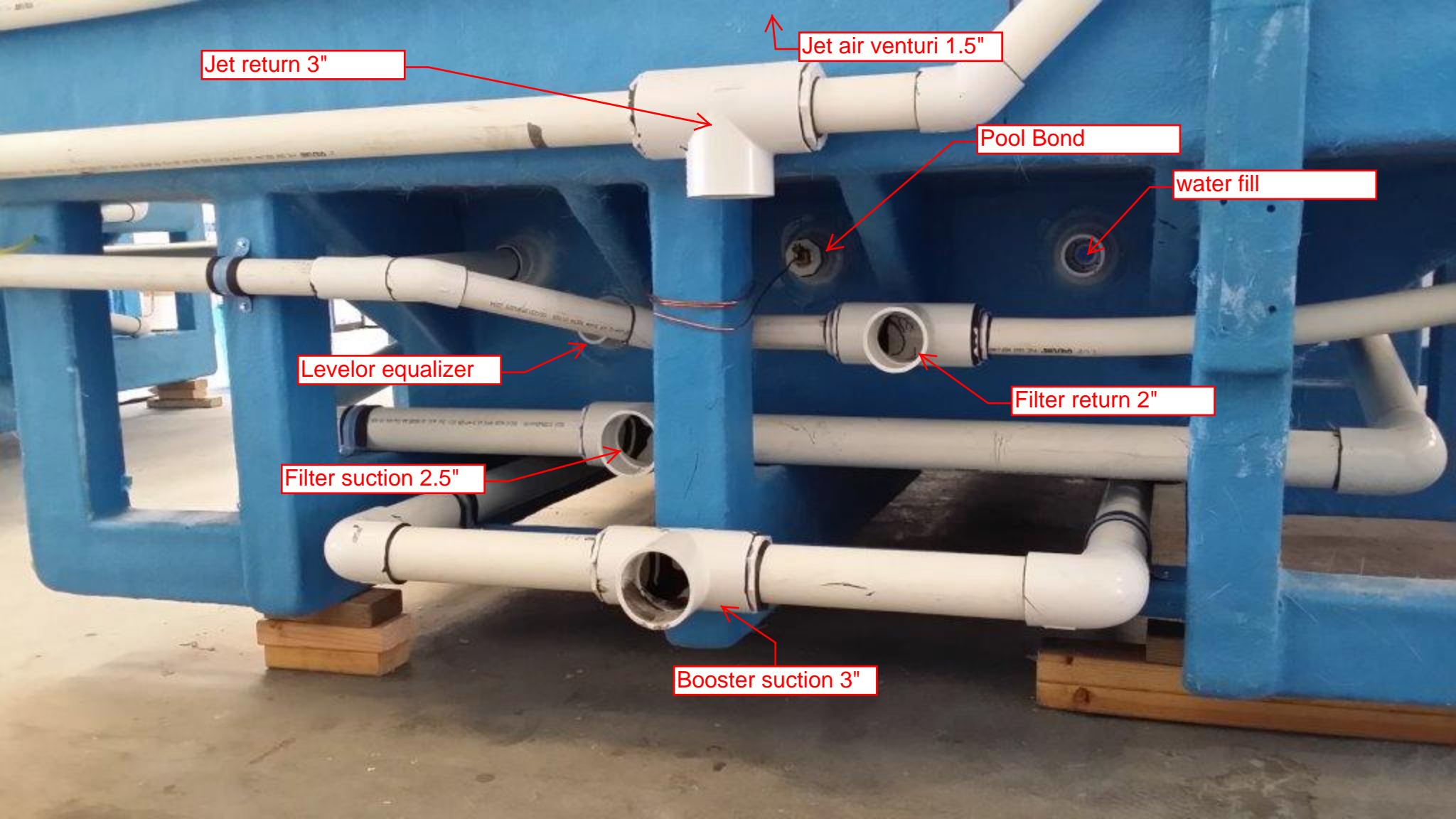
11/19/2014

DWG TYPE

Legacy 12 Return

SHEET

PAGE 1 OF 1



Jet return 3"

Jet air venturi 1.5"

Pool Bond

water fill

Levelor equalizer

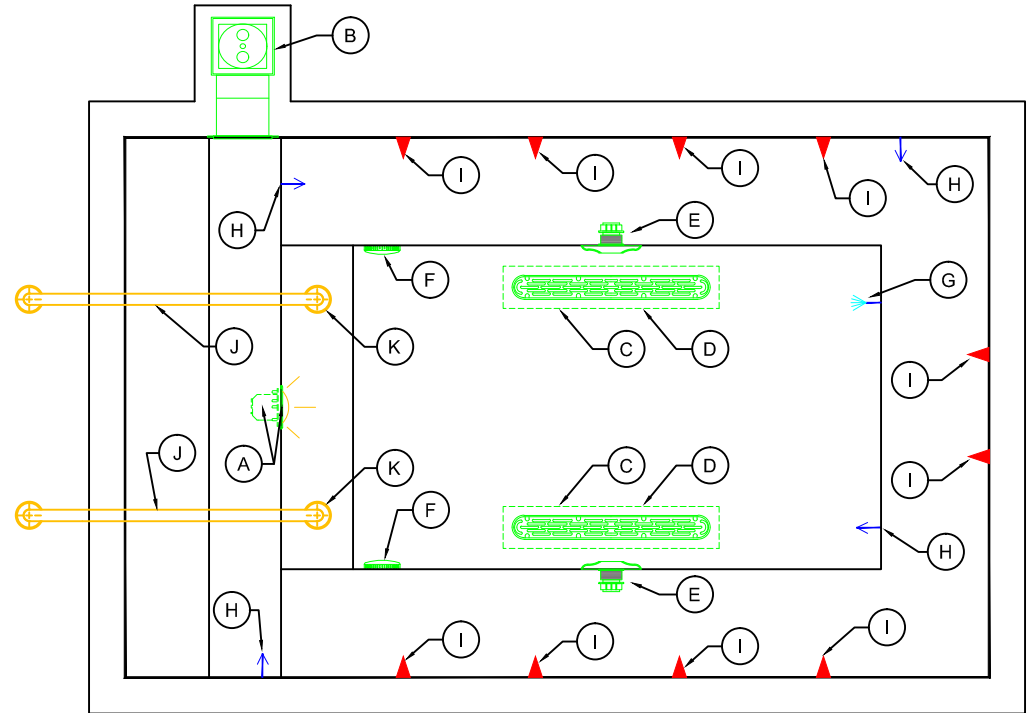
Filter return 2"

Filter suction 2.5"

Booster suction 3"

EQUIPMENT LIST

ITEM	DESCRIPTION	MANUFACTURER	CATALOG NO.	QTY.
A	UNDERWATER LIGHT, 120 VOLT, 100 WATT, W/ 50 FT. OF CORD, U.L. LISTED.	PENTAIR	78106100	1
A	LIGHT NICHE, U.L. LISTED.	PENTAIR	78242200	1
B	SURFACE SKIMMER, AUTOMATIC.	HAYWARD	SP-1084FVE	2
C	AquaStar 32CDFLFR, 32" Channel Drain, Approved Max Flow Rate: Floor = 236 GPM @ 3.4 fps Wall = 136 GPM @ 1.9 fps V.G.B Approved Safety Drain	AQUASTAR	32CDFLFR	2
D	Nespa MAIN DRAIN SUMP IAPMO Approval # SP4900	NESPA	NESPA,32CD, 4,2,2,2,5,2,5	2
E	Paramount SDX 10" Area of Opening = 43,201 in/sq Floor = 200 GPM @ 1,485 fps Wall = 192 GPM @ 1,426 fps Complies w/ ANSI / ASME A112.19.8 & NSF / ANSI 16-2011	PARAMOUNT	SDX-182-2212-01	2
F	6" Round Hockey Puck - Sumpleless Suction Outlet Floor 177 GPM - Wall 122 GPM - Complies w/ ANSI / ASME A112.19.8 & NSF / ANSI 16-2011	AQUASTAR	6HPHxxx	4
G	REFLECTION AND FILL PIPE FITTING W/ GRATE #SP1026	HAYWARD	SP-1023S	1
H	INLET FITTINGS, 1-1/2" CONNECTION W/ DIRECTIONAL EYEBALL FITTING, 3/4" ORIFICE #SP-1419-D.	HAYWARD	SP-1023S	4
I	HYDRO-INLET, 1-1/2" CONNECTION	HYDRO-AIR	10-5100	10
J	HAND RAIL, STAINLESS STEEL, W/ 1,90" TUBING W/ .065" WALL THICKNESS - 4' 0" LENGTH,	S. R. SMITH	3HR-4-065-1	2
K	WEDGE ANCHOR, BRONZE,	S. R. SMITH	IAS - 100	2



These drawings, concepts, and details contained herein are the original proprietary designs of **NESPA ENTERPRISES INC.**, developed over many years of experience in the industry and as such are protected by the copyright laws of the United States Government. Reproduction of any of the above without written permission to do so by **NESPA ENTERPRISES INC.**, is illegal.

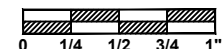
NESPA ENTERPRISES INC.
 2800 Richter Ave. Ste. C Oroville, CA 95966
 Office: (530) 534-9910 Fax: (530) 534-9915
 E-Mail: jim@tiledspas.com Web Site: www.tiledspas.com



If printing as a PDF:

Page Scaling:

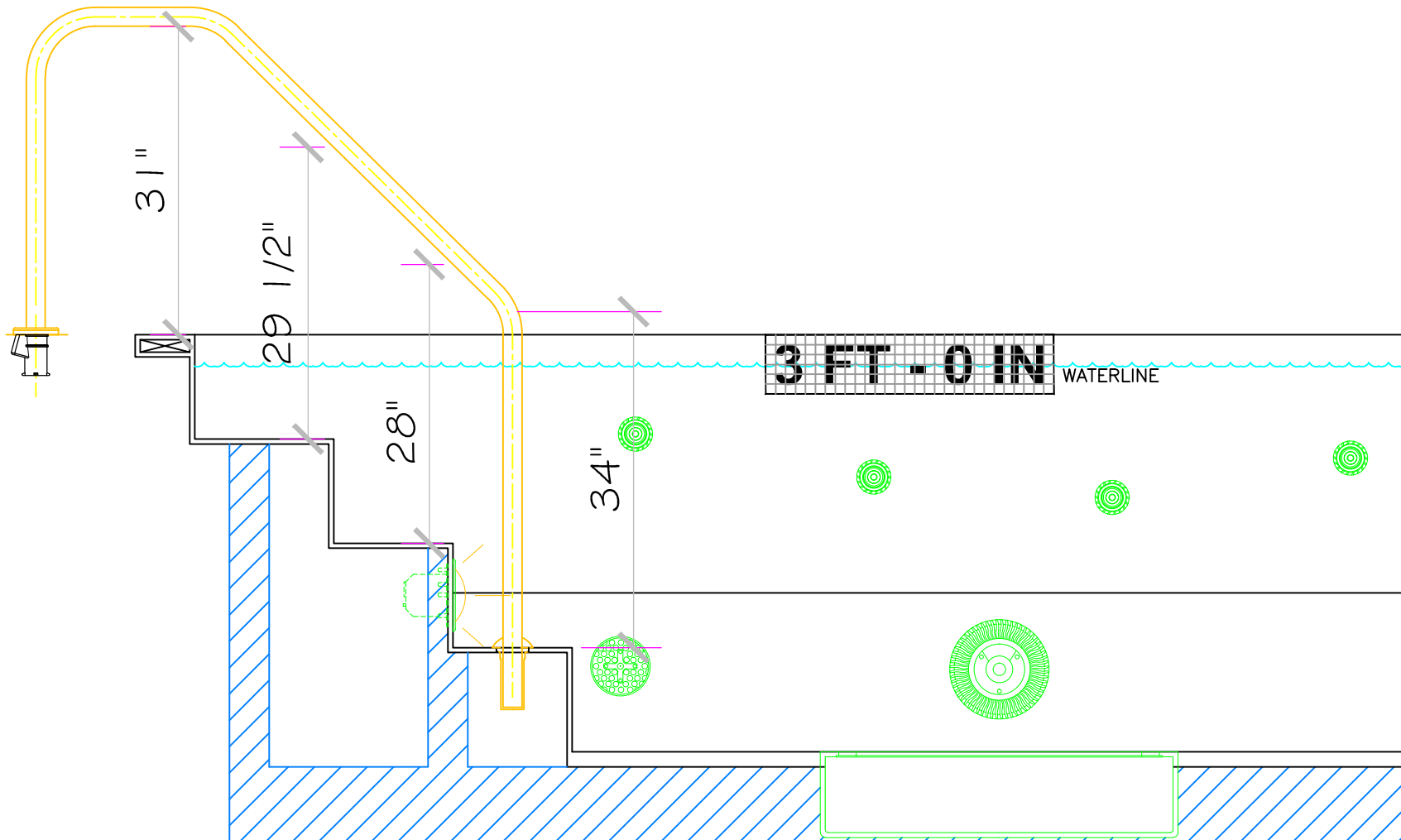
SCALE
 3/8" = 1'



DWG NAME **BURKE WILLIAMS TOPANGA**

DATE
 11/19/2014

DWG TYPE
 Legacy 12 EQ
 SHEET
 PAGE 1 OF 1



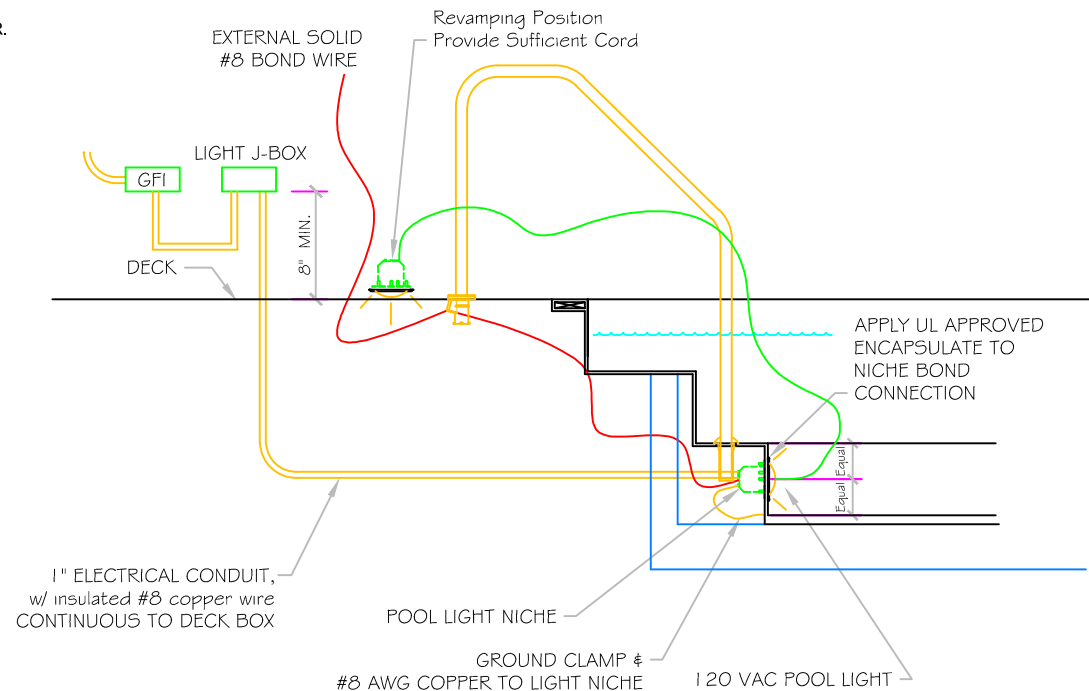
Waterproof Skid Support Structure attached to spa at Nespa factory

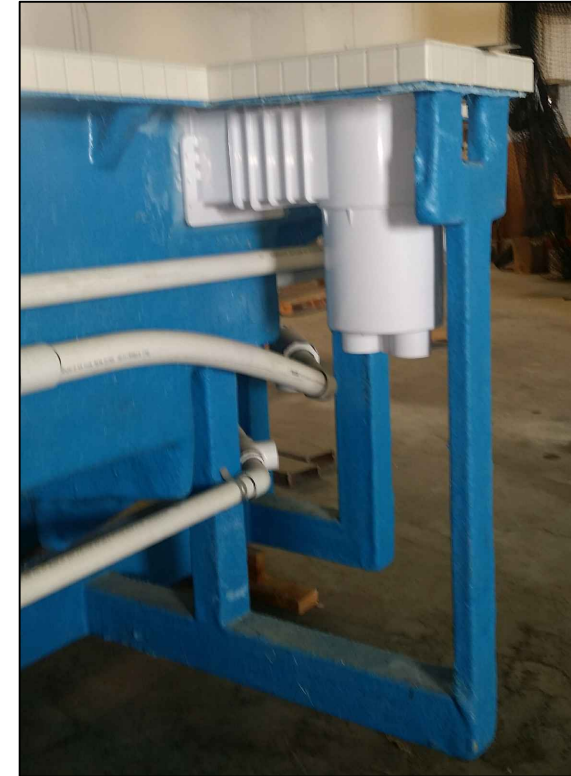
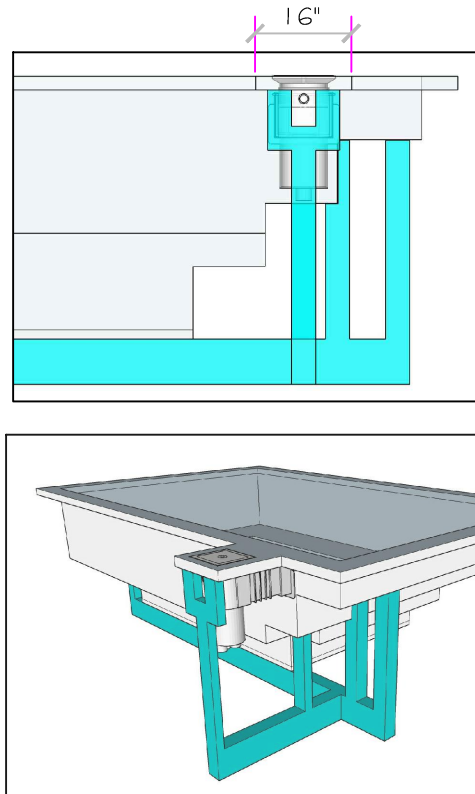
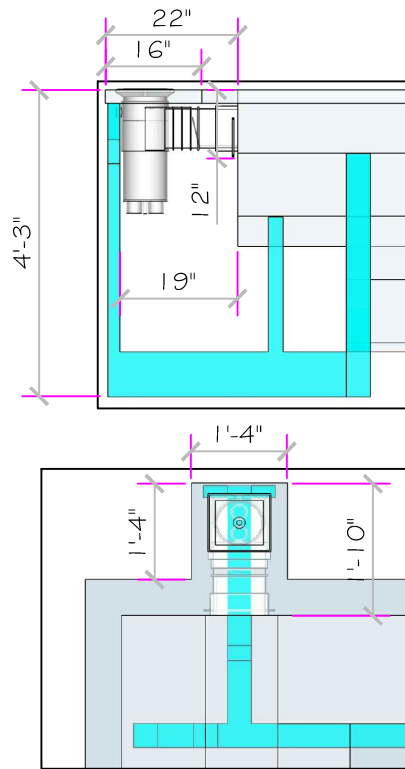


POOL BONDING REQUIREMENTS:

1. THE FOLLOWING PARTS SHALL BE BONDED TOGETHER AND CONNECTED TO THE COMMON BONDING GRID.
 - A. ALL THE METALLIC PARTS OF THE POOL STRUCTURE INCLUDING COPING STONES, DECK, PERMANENT PLAY STRUCTURES, PERMANENT EXERCISE STRUCTURES.
 - B. ALL METAL FITTINGS WITHIN OR ATTACHED TO THE POOL STRUCTURE
 - C. METAL PARTS ASSOCIATED WITH THE POOL WATER CIRCULATING SYSTEM, INCLUDING PUMPS, FILTERS, AND HEATERS.
 - D. METAL PARTS ASSOCIATED WITH POOL COVERS
 - E. METAL SHEATHED CABLES AND RACEWAYS, METAL PIPING AND ALL FIXED METAL PARTS WITHIN 5 FEET HORIZONTALLY OF INSIDE WALLS OF POOL AND WITHIN 12 FEET ABOVE MAXIMUM WATER LEVEL OF POOL.
 - F. METAL PARTS ASSOCIATED WITH OBSERVATION STANDS, TOWERS, PLATFORMS, AND DIVING STRUCTURES.
2. BONDING CONDUCTORS SHALL BE MINIMUM #8 SOLID COPPER, INSULATED E.C. SHALL COORDINATE APPROVED CONNECTOR TYPE AND METHOD WITH LOCAL ELECTRICAL AND/ OR POOL INSPECTOR.
3. SPECIFIC MANUFACTURER'S INSTRUCTIONS REGARDING BONDING OR GROUNDING OF POOL EQUIPMENT, WHETHER INDICATED HEREIN OR NOT, SHALL BE STRICTLY FOLLOWED.
4. THE COMMON BONDING GRID SHALL NOT BE CONNECTED TO ANY ELECTRICAL DISTRIBUTION EQUIPMENT.
5. ANY PARTS IN ADDITION TO THOSE DESCRIBED HEREIN THAT ARE INDICATED BY POOL CONTRACTOR OR LOCAL INSPECTION AUTHORITY SHALL BE BONDED TO THE COMMON BONDING GRID WITH NO ADDITIONAL COSTS INCURRED BY THE OWNER.
6. THE ELECTRICAL CONTRACTOR SHALL COORDINATE BONDING WITH GENERAL CONTRACTOR.

LIGHT DETAIL





HAYWARD MODEL SP1084 AUTO-SKIM
AUTOMATIC SURFACE SKIMMER
INSTALLATION AND OPERATING INSTRUCTIONS

The Auto-Skim is a rugged, versatile automatic skimmer for residential or commercial installations. The illustrations below show the standard SP1084 (K1), the SP1084V Skimmer/Main Drain Valve Assembly installed (K2), and the SP1084 with SP1078 Equalizer Valve and SP1082V Float Valve Assembly (K3). Consult inside pages for specific installation details and dimensions.

- BASIC UNIT**
 - FLOW ADJUSTMENT**—For full flow, move Flow Control Side Plate to full open. To adjust flow, move Side Plate to desired position over pump outlet.
 - TO VACUUM**—Remove cover and basket. Screw hose adapter into pump outlet. Fit vacuum hose with water and insert over hose adapter. Or use optional Skim-Vac over basket vacuum plate.
- SKIMMER WITH MAIN DRAIN CONNECTION**
 - FULL SKIM**—Place Valve Lever in straight-up position. Open Side Plate.
 - FULL MAIN DRAIN (SWEEP)**—Place Valve Lever down. Close Side Plate.
 - 1/2 SKIM - 1/2 MAIN DRAIN**—Place Valve Lever at 45° (half-down). Open Side Plate 1/2.
 - TO VACUUM**—Remove cover and basket. Place Valve Lever straight up. Fit vacuum hose with water and insert into opening in Valve Chamber. Or use optional Skim-Vac over basket vacuum plate.
- SP1084V-SKIMMER WITH EQUALIZER VALVE AND FLOAT VALVE ASSEMBLY**
 - EQUALIZER**—Model SP1078 Equalizer Check Valve Assembly installs over front port, and is used in conjunction with the SP1082V Float Valve Assembly. If water level drops below skimmer opening, or if skimmer flow is obstructed, the float will automatically snap shut and the equalizer valve will open. This directs all flow to the pump from the equalizer line and prevents airlock in the pump. When the pump is shut off, and the water level condition is corrected, the float will rise and the equalizer valve will close, allowing normal skimming operation when the pump is restarted.
 - TO VACUUM**—Select one connected skimmer and remove cover, basket and float valve assembly. Screw hose adapter into pump outlet. Fit vacuum hose with water and insert over hose adapter. Throttle down flow from other skimmer(s) until desired suction is obtained through vacuum plate.

NOTE: When two or more skimmers are plumbed into a common suction line, the flow is balanced through the skimmers by adjusting the Flow Control Side Plate at each unit.

SP1084 AUTO-SKIM
DIMENSIONS

INSTALLATION INSTRUCTIONS

EQUALIZER VALVE ASSEMBLY
 1. Remove screws, plug (if installed) and Flow Control Side Plate (if installed) from bottom of skimmer.
 2. Insert 1/2" Plug in SP1082V Valve Housing and place 1/2" Union of skimmer. Push or pull SKIMMER to the left (down) until 1/2" over PLUMB POINT (see connection).
 3. Insert Flow Housing Screw, with washer, through SKIMMER Flow Control Side Plate and into Valve Housing. Screw down until you reach in skimmer body. Tighten from mounting screw.

SKIMMER DRAIN FLANGE BY PASS ASSEMBLY
 1. Remove screw, plug (if installed) and Flow Control Side Plate (if installed) from bottom of skimmer.
 2. Attach 1/2" x 1/2" Tee/Female Plate to front assembly, using screw provided.
 3. Place Flow Valve Assembly, with G-ring into skimmer. Adjust Flow Control Tee/Female Plate as required.

SKIMMER DRAIN FLANGE BY PASS ASSEMBLY
 1. Place gasket over equalizer line port. Line up gasket over hole in body.
 2. Place Equalizer Assembly (with equalizer) port, solid side up.
 3. Insert mounting screws into side tabs and tighten and tighten (Mounting Screws).

VALVE HOUSING, FLOAT VALVE 1/2" HOUSING
 1. Remove screws, plug (if installed) and Flow Control Side Plate (if installed) from bottom of skimmer.
 2. Attach 1/2" x 1/2" Tee/Female Plate to front assembly, using screw provided.
 3. Place Flow Valve Assembly, with G-ring into skimmer. Adjust Flow Control Tee/Female Plate as required.

INSTALLATION INSTRUCTIONS

INSTRUCTIONS FOR WOOD PANEL

- Drill and cut out wall panel section per dimensions.
- Place gasket on skimmer face, making sure holes in gasket align with holes in skimmer face. (A very light application of adhesive correct will assist in holding gasket in place).
- Align skimmer face and gasket with skimmer face and install to wall panel at top center and bottom center with the two pre-installed mounting screws.
- If vinyl line pool, install line before proceeding with Step 5.
- Align skimmer face and gasket with skimmer face and install to wall panel at top center and bottom center with the two pre-installed mounting screws. Screws secure through 1. Place Plate, 2. Face.
- Insert vinyl pool, cut out line along inside edges of face plate.

INSTRUCTIONS FOR WOOD PANEL WITH VINYL LINER

- Drill and cut out wall panel approximately 1/8" larger than outside dimensions of skimmer face (NOT face plate).
- Insert skimmer into panel cut out from the rear, and butt the mounting flange against the rear of the panel. Use 1/2" screws, if necessary, to make face of skimmer flush with inside of the pool. Fasten the skimmer to the rear of the wood panel by screwing the proper length round head brass wood screws through the mounting flange holes.
- Place gasket on skimmer face, making sure holes in gasket align with holes in skimmer face. (A very light application of adhesive correct will assist in holding gasket in place).
- Install vinyl liner.
- Align skimmer gasket and face plate and fasten tightly to skimmer face with bushes (1/2" 1" screws). Place liner through face plate holes one at a time prior to inserting screws.
- Cut out vinyl liner along inside edges of face plate.

LOCATION OF SKIMMERS

To obtain the most effective skimming action over the entire pool surface, locate the skimmers relative to the prevailing wind and drift, shape of pool and water circulation pattern. The use of directional jet fittings will ensure the proper circulation pattern.

These drawings, concepts, and details contained herein are the original proprietary designs of **NESPA ENTERPRISES INC.**, developed over many years of experience in the industry and as such are protected by the copyright laws of the United States Government. Reproduction of any of the above without written permission to do so by **NESPA ENTERPRISES INC.**, is illegal.

NESPA ENTERPRISES INC.
 2800 Richter Ave. Ste. C Oroville, CA 95966
 Office: (530) 534-9910 Fax: (530) 534-9915
 E-Mail: jim@tiledspas.com Web Site: www.tiledspas.com



If printing as a PDF:

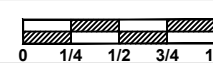
Page Scaling: None

DWG NAME

BURKE WILLIAMS TOPANGA

SCALE

3/8" = 1'



DATE

11/19/2014

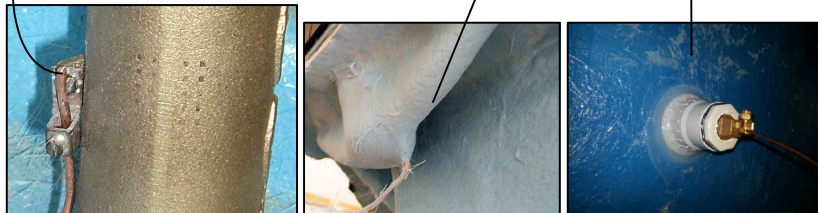
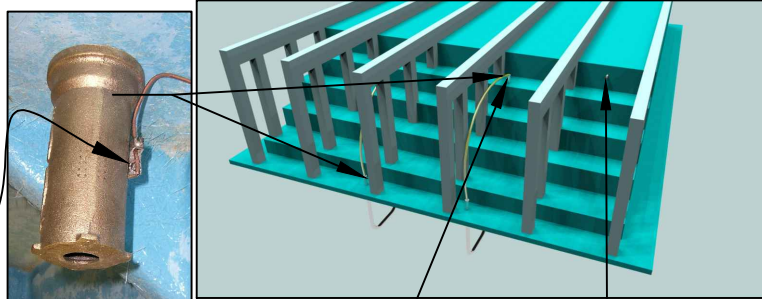
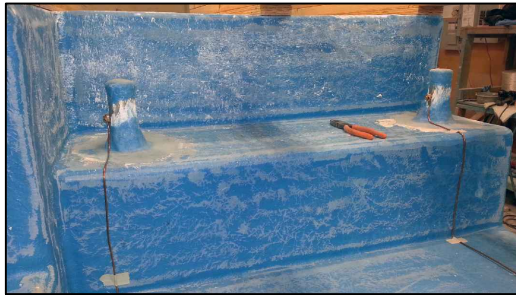
DWG TYPE

Skimmer Detail

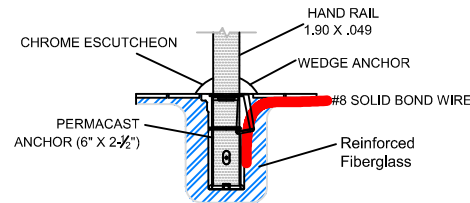
SHEET

PAGE 1 OF 1

Typical Cup Anchor



TYPICAL NESPA SHELL CUP Anchor Installation



NOTE:

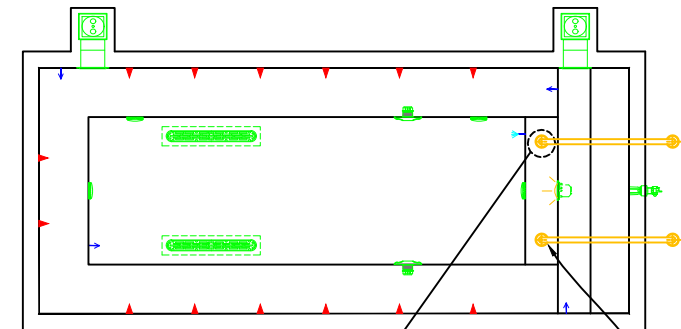
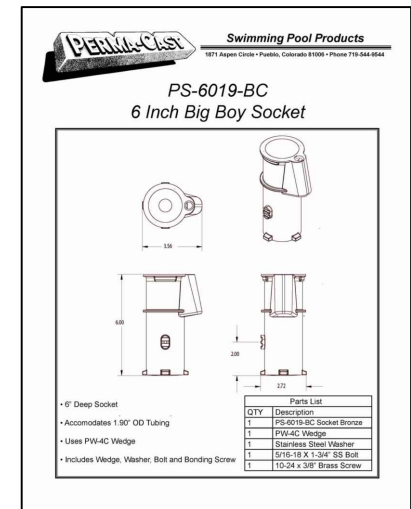
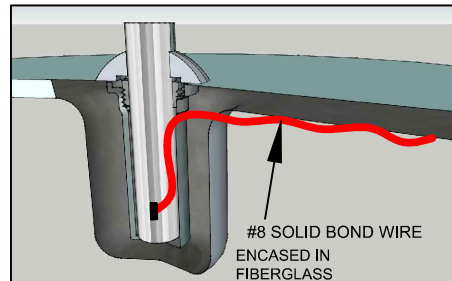
DETAIL REFLECTS ANCHOR INSTALLATION IN NESPA SHELLS ONLY.

CUP ANCHOR SHALL BE BONDED WITH A SOLID #8 COPPER BOND WIRE AND VERIFIED BY A CALIFORNIA LICENSED ELECTRICAL CONTRACTOR.

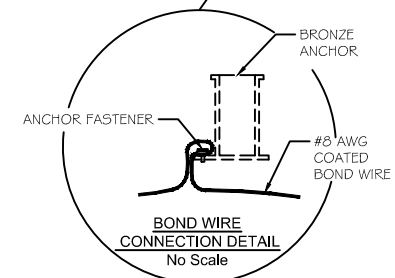
BOND WIRE WILL BE ENCASED AND COVERED IN FIBERGLASS TO PREVENT WATER LEAKAGE THRU SHELL.

BOND WIRE SHALL EXIT AT EDGE OF SPA AND ATTACH TO DECK BONDING GRID.

1 Anchor Detail



HANDRAILS AND ANCHORS



TYPICAL BONDING DETAIL

1. INSTALL PER NEC 2011, ARTICLE 680 REQUIREMENTS
2. USE #8 COATED TAILS OFF BOND LOOP TO EQUIPMENT AND STEEL NOT IMMEDIATELY ADJACENT TO BOND LOOP

STANDARD NESPA IN-GROUND INSTALLATION *INSTRUCTIONS* **SET-UP AND EXCAVATION**

Prerequisites: Before installing your Nespa spa. You may be required to acquire a permit from your local State, County, and City building dept and or Health department. (Commercial jobs need Health Dept. Approval). Your spa installation must comply with the most current codes. (**Uniform Swimming Pool, Spas & Hot Tub Code 2006 (USPC 2006)**).

Spa drawings: Request from Nespa a current spa specific construction detail, plan and section, spa plumbing detail.

Delivery Access: Clearly determine the method of getting the spa to jobsite and into the hole. This may require the use of a crane, forklift, hoist, backhoe and/or manpower etc.

- 1) The following instructions are general guidelines and may not apply to your specific jobsite conditions. When excavating for your spa remember to provide for plumbing and light connection clearances. In order to determine how to excavate for your spa or swim spa, measure spas outside dimension (O.D.) and add minimum 3” to all sides. This 3” clearance is to accommodate jet and suction plumbing. This 3” clearance can change or be reduced upon request. Note: skimmer location, this area may have to be larger than 3”, if commercial 22”.
- 2) **Freeze Climates-** If the spa is place into a vault (typical of freeze climates) a standard 18” or more of clearance minimum from spa perimeter should be provided. This dead air space is for possible future access to spa plumbing in case of a freeze. Area drain is mandatory. **Ask your local installer** for his experienced opinion. Do not hesitate to call us because we want to be sure that your installation progresses as smoothly as possible. If you have questions call us. (888) 479-4677.
- 2) **Hole depth** is determined by spa’s outside height dimension. This height may vary depending if spa has skids or no skids. The spa lip may be finished or non- finished. How is the perimeter deck elevation transitioning to the spa? Focus on the finish surrounding deck elevations, thickness of the finish material on spa upper horizontal lip, equal to lip or under the spa lip. This material can be tile, stone, concrete or brick.
- 3) **Preplumb** the spa before it goes into the hole. If there are needs for electrical , bonding or control conduits run them as well before dropping in hole. Connect bond wire to niche would be best.
- 4) **Spa should sit on level 3 ½” thick reinforced concrete pad. Sweep debris off pad prior to dropping in hole.**
- 5) **Install spa** into the hole on top of concrete pad. Use the Eye bolts provided for crane, forklift etc. rigging. Do not hold onto pipes. Use caution with suction and jet plumbing when lowering into hole. **DO NOT STRESS FITTINGS!** Fill Spa with water and check for leaks prior to backfill.

- 6) **Check site reference** points for proper spa positioning (i.e., squaring to house, garage, etc.).
- 7) **Shim to level spa.** Shim with non-compression able material. Re square to house, or ref. point.
- 8) **Dry pack** with cement the gaps that have been created when shimming spa level.
- 9) **Connect pipes to tees** if spa is preplumb. Installers properly support your new plumbing from stressing spas preplumb fittings. After electrical conduit and bond wire is connected to light niche, water test spa before back filling with sand.
NOTE: All Nespa products are water tested prior to leaving factory.

ELECTRICAL:

- 1) All electrical connections to spa or equipment should comply with the most recent national electrical code (NEC), state and local codes.
- 2) Connect electrical conduit to light niche. This work should be done or reviewed by a licensed electrician.
- 3) To install spa light you will need to include inside the PVC conduit to the light niche a solid #8 coated copper wire. (If you are use brass conduit, internal bond wire is not required.) This bond wire should be pulled with the light cord at the same time. This bond wire needs to be attached to the internal bonding lug of the light niche. An approved encapsulate should be applied to bond wire connection in niche.
- 4) An external #8 copper wire shall be connected to the external bonding lug on the rear of the light niche. This copper wire can then be used for additional bonding requirements (i.e., handrails or any other metallic object within 5' of the spa.

PLUMBING:

- 1) **When plumbing a Nespa it is important to properly size the plumbing. We highly recommend that you follow the pump manufacturer's pipe sizing requirements and Uniform Swimming Pool, Spas & Hot Tub Code 2006 (USPC 2006). This code book is available at www.IAPMO.org or (909) 472 4100.**
- 2) The jet air venturi should be a Hartford loop design adjacent to spa shell and air entry point can be located next to spa or remotely at equipment.
- 3) Fill spa with water and test the system for leaks PRIOR to backfilling with sand.

SAND BACK FILL:

- 1) **With water in spa, back-fill around spa perimeter with dry plaster sand and wet wash with hydraulic attachment to hose. Let set for one hour and hydraulic dry again. Be sure water level in spa is at the highest level. Any questions please call us. (888) 479-4677.**
- 2) **If spa is free standing on elevated deck or a structure, it is important to fill spa with water and load area prior to installing coping or perimeter decking. If spa is installed in a vault situation a area drain is needed.**

NESPA ENTERPRISES INC.

2800 Richter Ave. Suite E

Oroville, CA 95966

Office: (888) 479-4677 Fax: (530) 534-9915

E-Mail: nespa@pacbell.net www.tiledspas.com

IN-GROUND

INSTALLATION

ALL DIMENSIONS SUBJECT TO 1/4" TOLERANCES

SCALE: 1/2" = 1'-0"

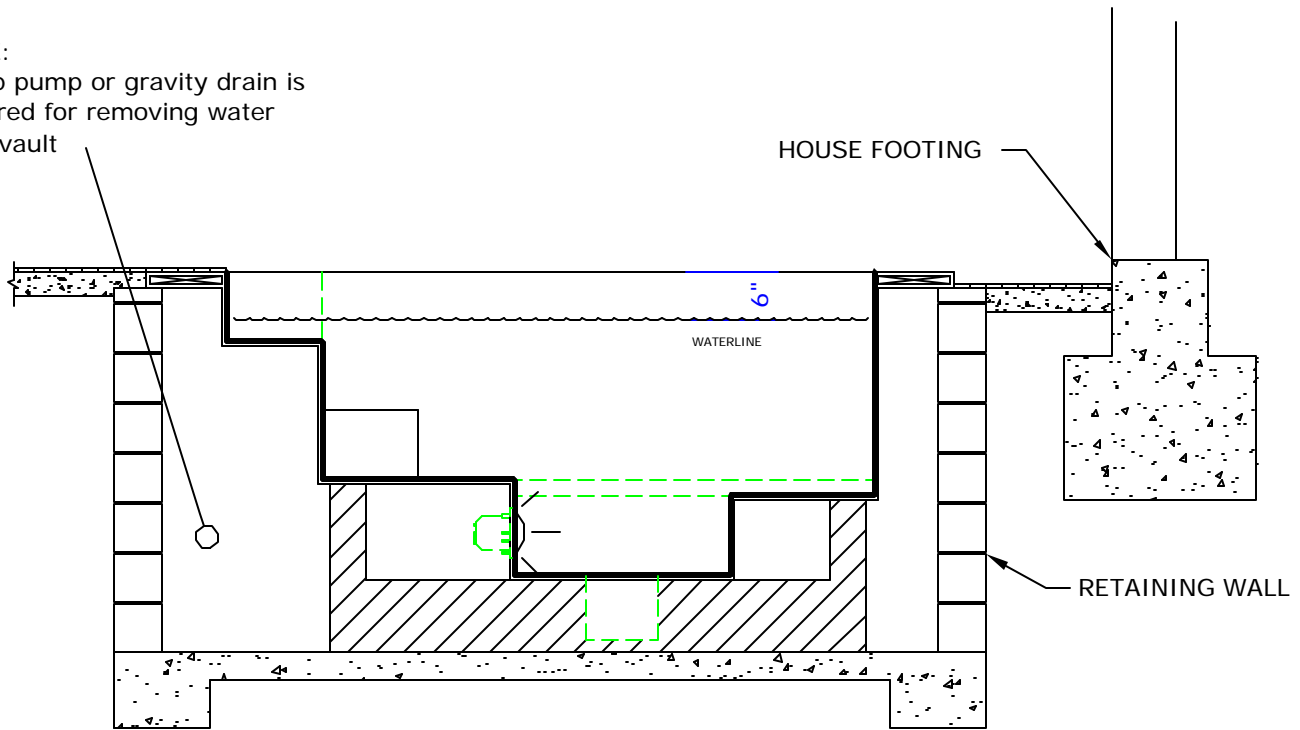
DATE: 3/27/02

JOB : STANDARD INSTALL

DW #: SI-1, SI-2

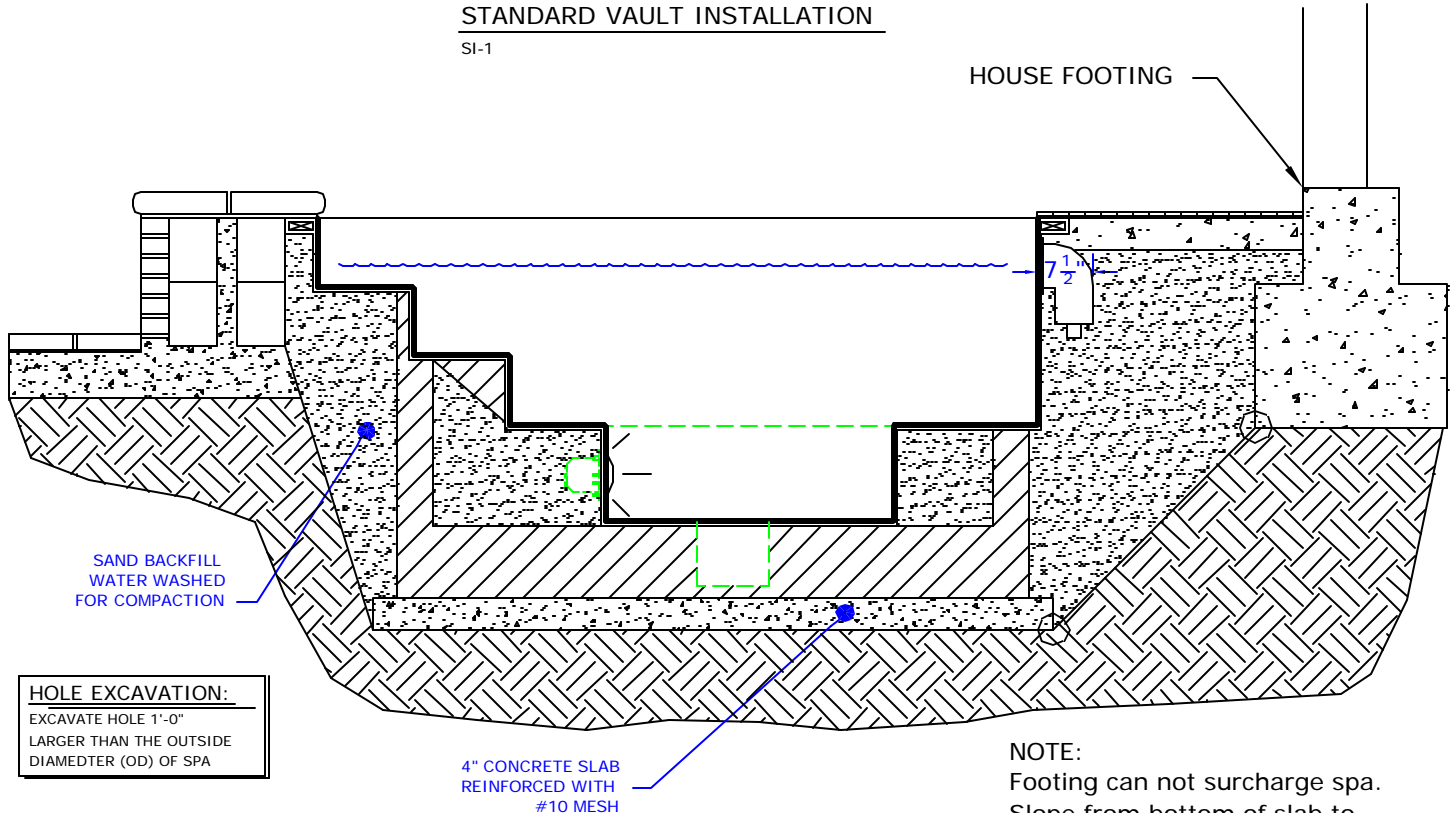
NOTE:

Sump pump or gravity drain is required for removing water from vault



STANDARD VAULT INSTALLATION

SI-1



SAND BACKFILL
WATER WASHED
FOR COMPACTION

HOLE EXCAVATION:

EXCAVATE HOLE 1'-0"
LARGER THAN THE OUTSIDE
DIAMETER (OD) OF SPA

4" CONCRETE SLAB
REINFORCED WITH
#10 MESH

STANDARD INGROUND INSTALLATION

SI-2

NOTE:

Footing can not surcharge spa.
Slope from bottom of slab to
nearest corner of house footing
must not exceed 1" = 1'.

NESPA ENTERPRISES, Inc. LIMITED WARRANTY

This LIMITED WARRANTY covering NESPA products is extended to the ORIGINAL PURCHASER-USER BY NESPA ENTERPRISES Inc.(NESPA), 2800 Richter Ave. Unit C California 95966.

NESPA products are thoroughly inspected and tested prior to factory shipment. NESPA warrants to the ORIGINAL PURCHASER-USER that NESPA Spas and Swim Spas will be free of defect in workmanship, accessories and parts, provided said accessories and parts were manufactured by NESPA. NESPA, under this LIMITED WARRANTY, warrants only that its Spas and Swim Spas shall be structurally sound, shall retain their shape, and shall retain water for the warranty period. NESPA warrants the adhesion of tile to fiberglass for a period of three (3) years and structural soundness for ten (10) years. NESPA warrants epoxy grout adhesion for a period of three years. If any such defects appear and are reported within the warranty period, NESPA shall repair or replace such defective parts without charge if an inspection proves the claim.

The provisions of the LIMITED WARRANTY shall not apply to tile cracked, split, chipped or damaged after the product has left the factory, nor damage to tile caused by freezing nor to damage, defect, malfunction or failure to conform with the above warranty provisions where the damage, defect, malfunction or failure to conform was caused during shipment or by distributor or by unreasonable use by ORIGINAL PURCHASER-USER including improper water balance and improper sand pack or support.

This LIMITED WARRANTY shall not apply to any plumbing, equipment, or installation of spas and Swim Spas and shall not apply to any alterations made to or upon NESPA products except alterations made by NESPA employees or NESPA authorized representatives.

This LIMITED WARRANTY is expressly in lieu of all other warranties expressed or implied including the warranties of merchantability and fitness for use and all other obligations or liabilities on NESPA'S part, and NESPA neither assumes nor authorizes any other person to assume for NESPA any other liability in connection with the sale of this NESPA product. This LIMITED WARRANTY shall not apply to this NESPA product or any part thereof which has been subject to accident, negligence, alteration, abuse or misuse. NESPA makes no warranty whatsoever with respect to accessories or parts not manufactured by NESPA.

The term "ORIGINAL PURCHASER-USER" as used in this LIMITED WARRANTY shall be deemed to mean that person for whom the NESPA product is originally installed.

The LIMITED WARRANTY provided herein and the obligations and liabilities of NESPA hereunder are exclusive and are in lieu of, and buyer and original PURCHASE-USER hereby waive all other remedies, warranties, guarantees or liabilities, expressed or implied, arising by law or otherwise (including without limitation and obligations of NESPA with respect to fitness, merchantability, and consequential damages) or whether or not occasioned by NESPA'S negligence.

This LIMITED WARRANTY shall not be extended, altered or varied except by a written instrument signed by NESPA and original PURCHASER-USER.