

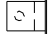




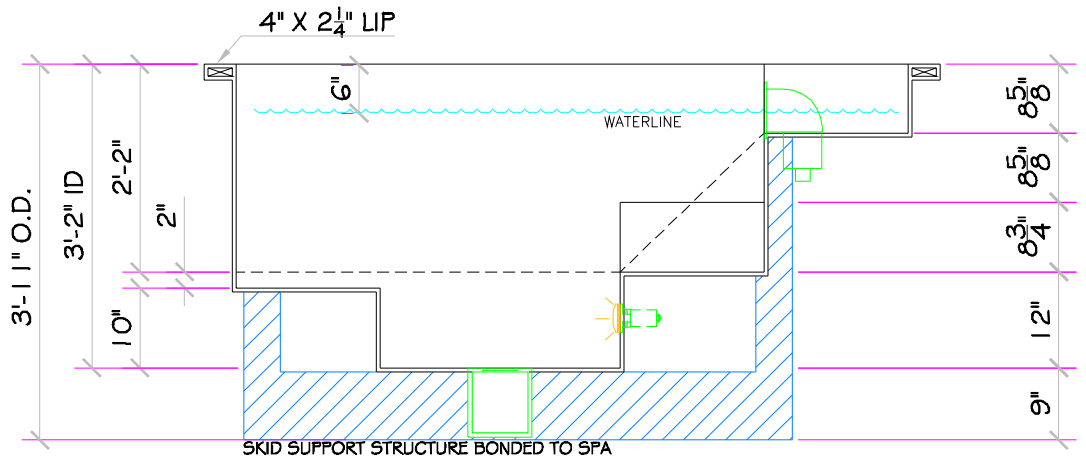
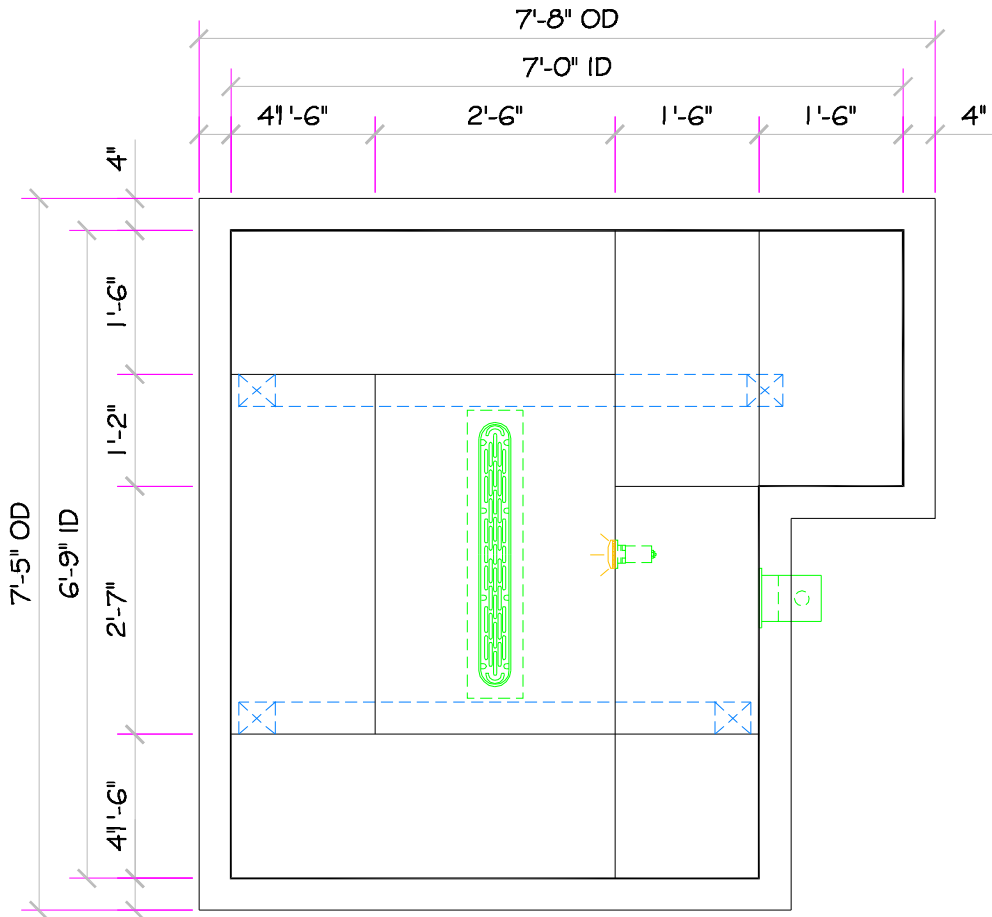


CAPRI

ALL TILED SPA - Fits 4 Adults

SPECIFICATIONS	
DRY WEIGHT:	1700 LBS.
TOTAL WEIGHT:	7375 LBS.
WATER:	681 GAL.
VOLUME:	91 Cu.Ft.
WEIGHT:	5675 LBS.
SURFACE AREA:	41 SQ. FT.
IAPMO#:	1138
FDA#:	2030305

SKID SUPPORT STRUCTURE* BONDED TO SPA	
	
*SKIDS SUPPLIED BY NESPA	
LIGHT NICHE	
 PAL 2000 LV LIGHT, 12 VOLT 50 WATT, U.L. APPROVED	
SKIMMER	
 FRONT ACCESS SKIMMER, NSF APPROVED	
MAIN DRAIN	
 AquaStar 32CDFLR, 32" Channel Drain, Approved Max Flow Rate: Floor = 236 GPM @ 3.4 fps Wall = 136 GPM @ 1.9 fps V.G.B Approved Safety Drain	
JET	
 HYDRO INLETS 1-1/2" WATER - 1-1/2" AIR HYDROAIR #10-5100 COMPLIES W/ ANSI CODE ASME A112.19.8-07 UL APPROVED	
RETURN	
 INLET FITTINGS 1-1/2" WALL TYPE W/ EYEBALL HYDROAIR #10-3500 COMPLIES W/ ANSI CODE ASME A112.19.8-07 UL APPROVED	
FILL	
 INLET FITTINGS 1-1/2" WALL TYPE W/ EYEBALL HYDROAIR #10-3500 COMPLIES W/ ANSI CODE ASME A112.19.8-07 UL APPROVED	



*** Complies with V.G.B. Pool and Spa Safety Act**

ALL DIMENSIONS SUBJECT TO 1/4" TOLERANCES

Apr 22, 2009 - 2:53pm

NESPA ENTERPRISES INC.

2800 Richter Ave. Suite C Oroville, CA 95966

Office: (530) 534-9910

Fax: (530) 534-9915

E-Mail: sales@tiledspas.com Web Site: www.tiledspas.com



DWG NAME

NESPA_RESIDENTIAL_MODELS

DWG TYPE

SD

SCALE 1/2" = 1'

DATE 4/22/2009

SHEET PAGE 1 OF 1

These drawings, concepts, and details contained herein are the original proprietary designs of NESPA ENTERPRISES, developed over many years of experience in the pool and spa industry and as such are protected by the copyright laws of the United States Government. Reproduction of any of the above without written permission to do so by NESPA ENTERPRISES, is illegal.