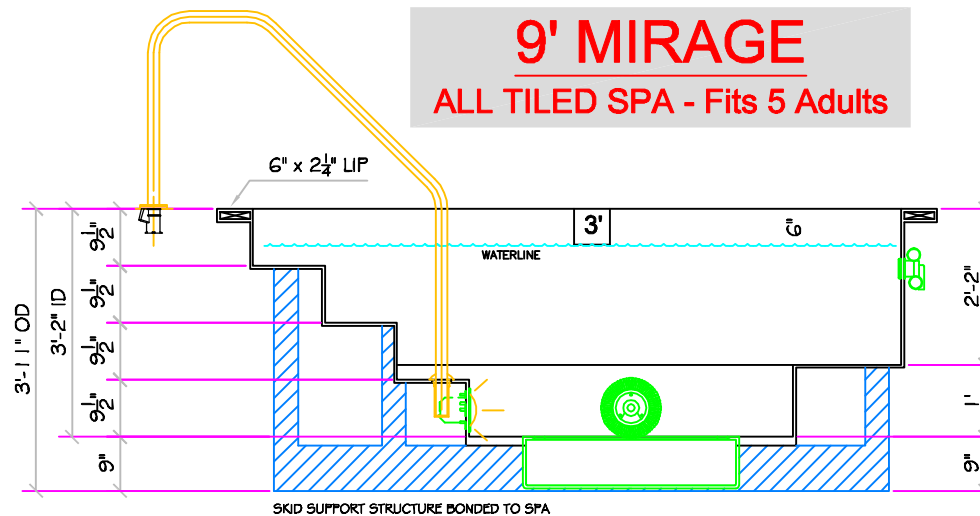
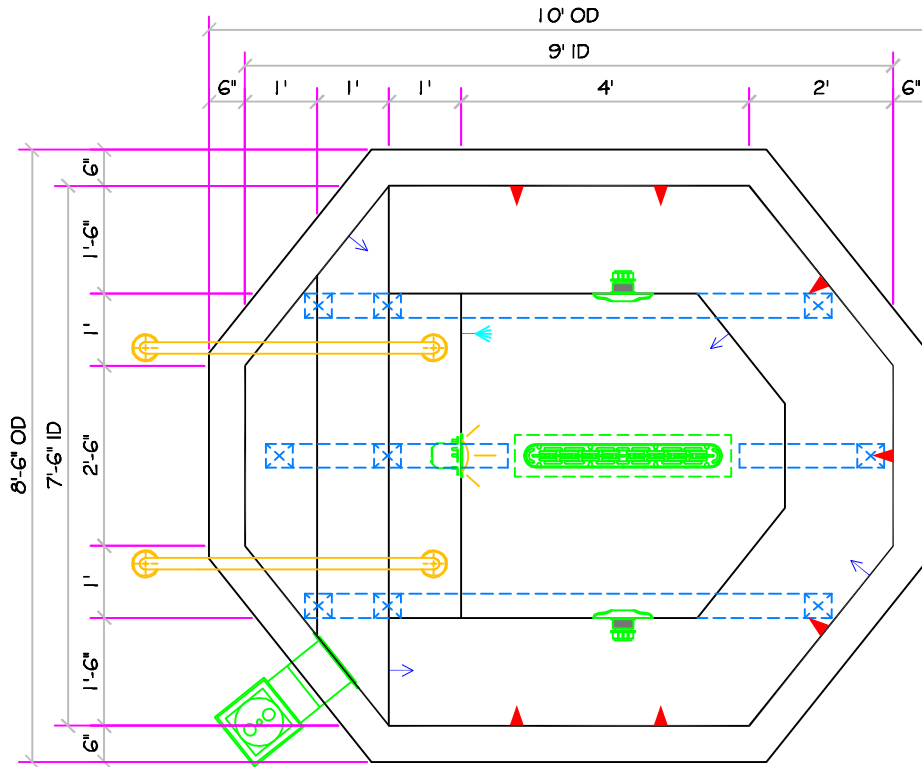


SPECIFICATIONS	
DRY WEIGHT:	2400 LBS.
TOTAL WEIGHT:	11131 LBS.
WATER:	1047 GAL.
VOLUME:	140 Cu.FL
WEIGHT:	8731 LBS.
SURFACE AREA:	58 SQ. FT.
IAPMO#:	1138
FDA#:	2030305

SKID SUPPORT STRUCTURE* BONDED TO SPA	
	*SKIDS SUPPLIED BY NESPA
LIGHT NICHE	
	SPA BRIGHT, 120 V, 100 WATT, 50' CORD, U.L. APPROVED
SKIMMER	
	HAYWARD SP-1084FVE SURFACE SKIMMER W/ EQUALIZER, NSF APPROVED
MAIN DRAIN	
	AguaStar 32CDFLFR, 32" Channel Drain, Approved Max Flow Rate/Floor = 236 GPM @ 3.4 fps, Wall = 136 GPM @ 1.9 fps, V.G.B Approved Safety Drain
SIDEWALL SUCTION	
	Paramount SDX 10" HIGH FLOW SAFETY DRAIN, Area of Opening = 43.201 in ² , Velocity @ 200 GPM = 1.485 fps, V.G.B Approved Safety Drain
JET	
	HYDRO INLETS, 1-1/2" WATER - 1-1/2" AIR, HYDROAIR #10-S100, COMPLIES W/ ANSI CODE ASME A112.19.8-07, U.L. APPROVED
RETURN	
	INLET FITTINGS, 1-1/2" WALL TYPE W/EYEBALL, HYDROAIR #10-3500, COMPLIES W/ ANSI CODE ASME A112.19.8-07, U.L. APPROVED
FILL	
	INLET FITTINGS, 1-1/2" WALL TYPE W/EYEBALL, HYDROAIR #10-3500, COMPLIES W/ ANSI CODE ASME A112.19.8-07, U.L. APPROVED



9' MIRAGE
ALL TILED SPA - Fits 5 Adults

*** Complies with V.G.B.
Pool and Spa Safety Act
APPROVED FOR
COMMERCIAL USE**

ALL DIMENSIONS SUBJECT TO 1/4" TOLERANCES

These drawings, concepts, and details contained herein are the original proprietary designs of NESPA ENTERPRISES, developed over many years of experience in the pool and spa industry and as such are protected by the copyright laws of the United States Government. Reproduction of any of the above without written permission to do so by NESPA ENTERPRISES, is illegal.

NESPA ENTERPRISES INC.

2800 Richter Ave. Ste. C Oroville, CA 95966

Office: (530) 534-9910

Fax: (530) 534-9915

E-Mail: sales@tiledspas.com Web Site: www.tiledspas.com



SIZE
A

DWG NAME

NESPA_IAPMO_MODELS

DWG TYPE

SD (LA)

SCALE 3/8" = 1'

DATE 3/31/2009

SHEET

PAGE 1 OF 1

Mar 31, 2009 - 1:36pm