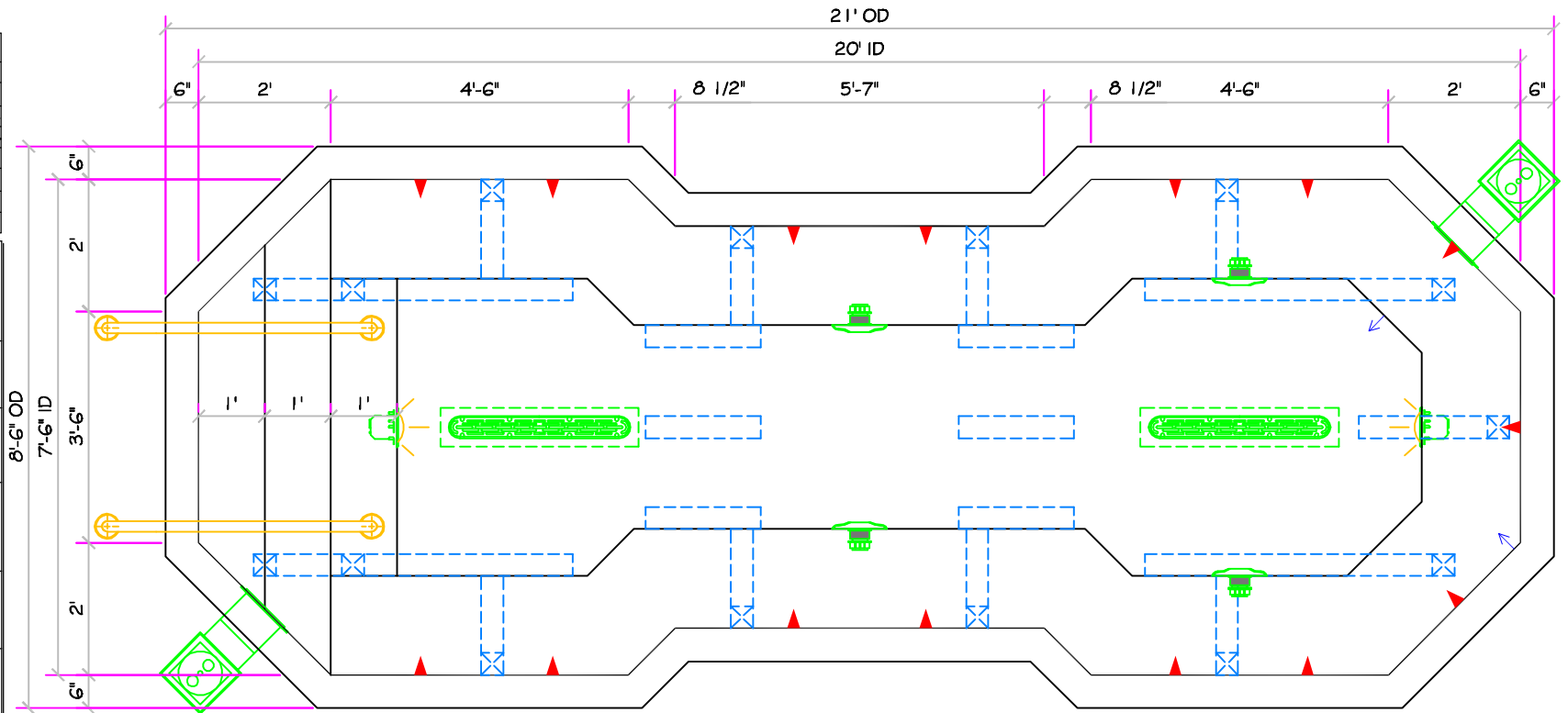


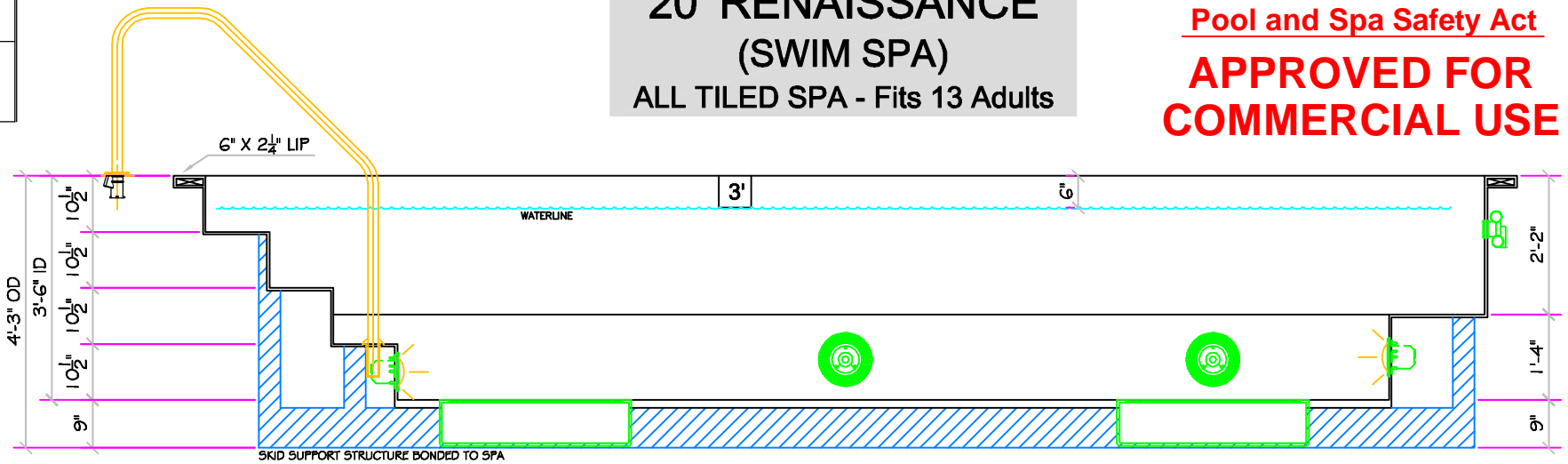
SPECIFICATIONS	
DRY WEIGHT:	3600 LBS.
TOTAL WEIGHT:	25988 LBS.
WATER:	2685 GAL.
VOLUME:	359 Cu.Ft.
WEIGHT:	22388 LBS.
SURFACE AREA:	133 SQ. FT.
IAPMO#:	1138
FDA#:	2030305

<b>SKID SUPPORT STRUCTURE* BONDED TO SPA</b>
SKIDS SUPPLIED BY NESPA
<b>LIGHT NICHE</b>
SPA BRIGHT - 120 V, 100 WATT, 50 CORD, U.L. APPROVED
<b>SKIMMER</b>
HAYWARD SP-1084FVE SURFACE SKIMMER W/EQUALIZER, NSF APPROVED
<b>MAIN DRAIN</b>
AquaStar 32CDFLFR, 32" Channel Drain, Approved Max Flow Rate: Floor = 236 GPM @ 3.4 fpm, Wall = 136 GPM @ 1.9 fpm, V.G.B. Approved Safety Drain
<b>SIDEWALL SUCTION</b>
Paramour SDX 10" HIGH FLOW SAFETY DRAIN, Area of Opening = 43.201 in <sup>2</sup> , Velocity @ 200 GPM = 1.485 fpm, V.G.B. Approved Safety Drain
<b>JET</b>
HYDRO INLETS, 1-1/2" WATER - 1-1/2" AIR, HYDROAIR #10-3500, COMPLIES W/ ANSI CODE ASME A112.19.8-07, U.L. APPROVED
<b>RETURN</b>
INLET FITTINGS, 1-1/2" WALL TYPE W/EYEBALL, HYDROAIR #10-3500, COMPLIES W/ ANSI CODE ASME A112.19.8-07, U.L. APPROVED
<b>FILL</b>
INLET FITTINGS, 1-1/2" WALL TYPE W/EYEBALL, HYDROAIR #10-3500, COMPLIES W/ ANSI CODE ASME A112.19.8-07, U.L. APPROVED



**20' RENAISSANCE  
(SWIM SPA)  
ALL TILED SPA - Fits 13 Adults**

**\* Complies with V.G.B.  
Pool and Spa Safety Act  
APPROVED FOR  
COMMERCIAL USE**



\*ALL DIMENSIONS SUBJECT TO 1/4" TOLERANCES\*

Feb 03, 2009 - 4:13pm

These drawings, concepts, and details contained herein are the original proprietary designs of NESPA ENTERPRISES, developed over many years of experience in the pool and spa industry and as such are protected by the copyright laws of the United States Government. Reproduction of any of the above without written permission to do so by NESPA ENTERPRISES, is illegal.

**NESPA ENTERPRISES INC.**  
2800 Richter Ave. Ste. C Oroville, CA 95966  
Office: (530) 534-9910 Fax: (530) 534-9915  
E-Mail: [sales@tiledspas.com](mailto:sales@tiledspas.com) Web Site: [www.tiledspas.com](http://www.tiledspas.com)



SIZE <b>A</b>	DWG NAME <b>NESPA_MASTER_MODELS</b>	DWG TYPE <b>SD (LA)</b>
SCALE <b>3/8" = 1'</b>	DATE <b>2/3/2009</b>	SHEET <b>PAGE 1 OF 1</b>