

SPECIFICATIONS	
DRY WEIGHT:	1600 LBS.
TOTAL WEIGHT:	5653 LBS.
WATER:	486 GAL.
VOLUME:	65 Cu.Ft.
WEIGHT:	4053 LBS.
SURFACE AREA:	30 SQ. FT.
IAPMO#:	1138
FDA#:	2030305

SKID SUPPORT STRUCTURE* BONDED TO SPA



*SKIDS SUPPLIED BY NESPA

LIGHT NICHE



SPA BRIGHT, 120 V, 100 WATT, 50' CORD, U.L. APPROVED

MAIN DRAIN



AquaStar 32CDFLFR, 32" Channel Drain, Approved Max Flow Rate: Floor = 236 GPM @ 3.4 fps Wall = 136 GPM @ 1.9 fps V.G.B Approved Safety Drain

SIDEWALL SUCTION



AquaStar 10AV, 10" Dia Frame, Approved Max Flow Rate: Floor = 206 GPM @ 5.8 fps Wall = 96 GPM @ 2.8 fps Max Flow = 210GPM V.G.B Approved Safety Drain

EQUALIZER



5" HIGH FLOW SUCTIONS Waterway 640-357xV Super Hi-Flo Suction Assy. Max Flow 180 GPM Complies w/ ANSI Code ASME A112.19.8-2007 & VGB 2008

SKIMMER



HAYWARD SP-1084FVE SURFACE SKIMMER W/ EQUALIZER, NSF APPROVED

JET

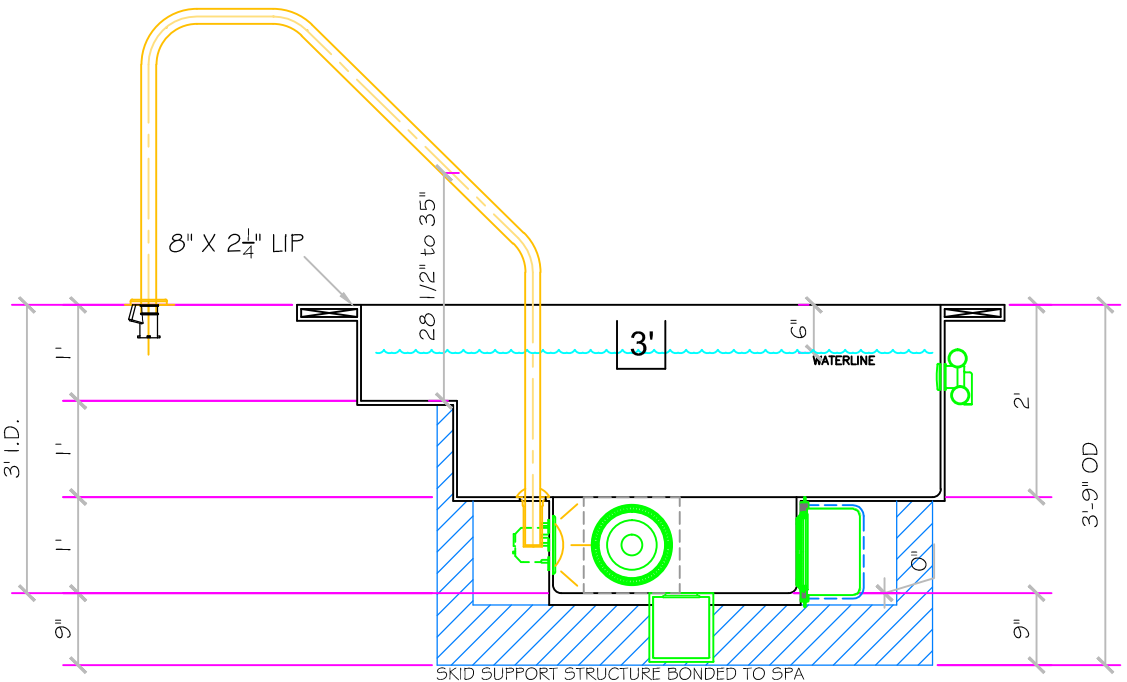
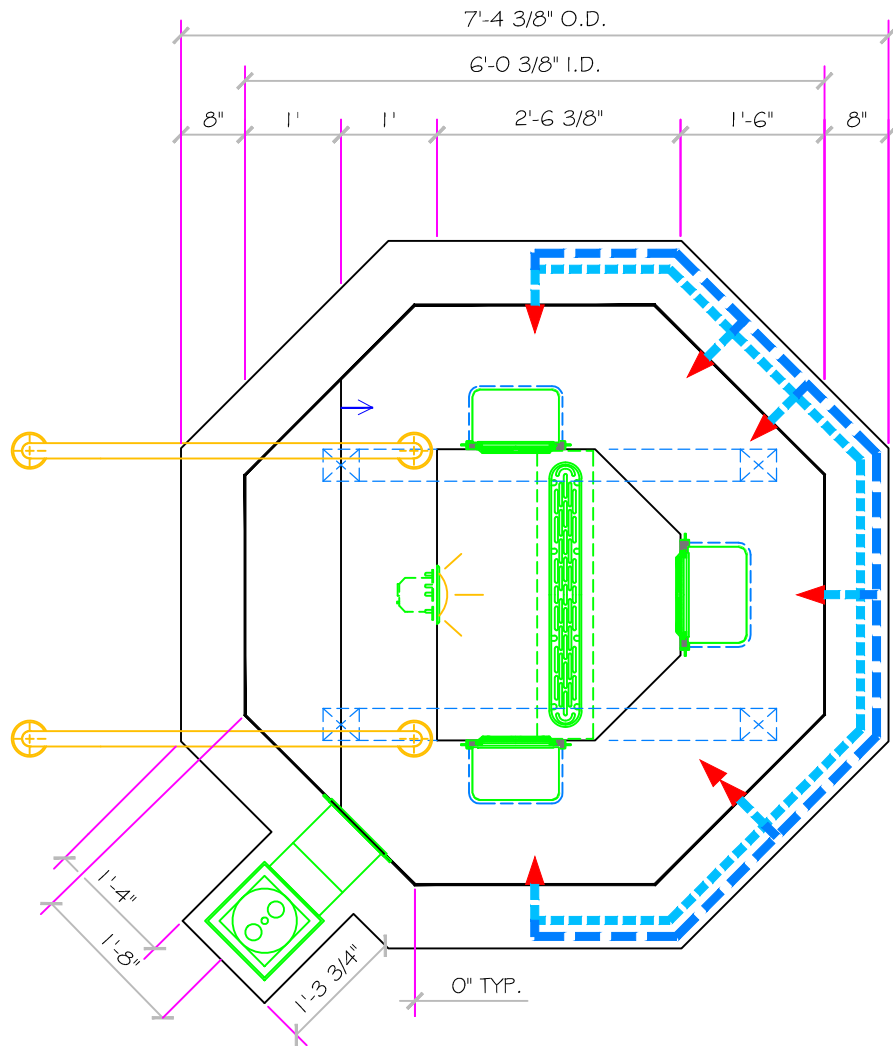
HYDRO INLETS 1-1/2" WATER = 1-1/2" AIR HYDROAIR #10-5100 COMPLIES W/ ANSI CODE ASME A112.19.8-07 UL APPROVED

RETURN

INLET FITTINGS 1-1/2" WALL TYPE W/ EYEBALL HYDROAIR #10-3500 COMPLIES W/ ANSI CODE ASME A112.19.8-07 UL APPROVED

FILL

INLET FITTINGS 1-1/2" WALL TYPE W/ EYEBALL HYDROAIR #10-3500 COMPLIES W/ ANSI CODE ASME A112.19.8-07 UL APPROVED



PRELIMINARY

ALL DIMENSIONS SUBJECT TO 1/4" TOLERANCES

NESPA ENTERPRISES INC.

2800 Richter Ave. Suite C Oroville, CA 95966

Office: (530) 534-9910

Fax: (530) 534-9915

E-Mail: sales@tiledspas.com Web Site: www.tiledspas.com

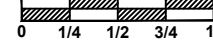


If printing as a PDF:

Page Scaling: None

SCALE

1/2" = 1'



DWG TYPE

SD

DWG NAME
COMMERCIAL MAXIMA SHOW SPA

DATE

9/30/2011

SHEET

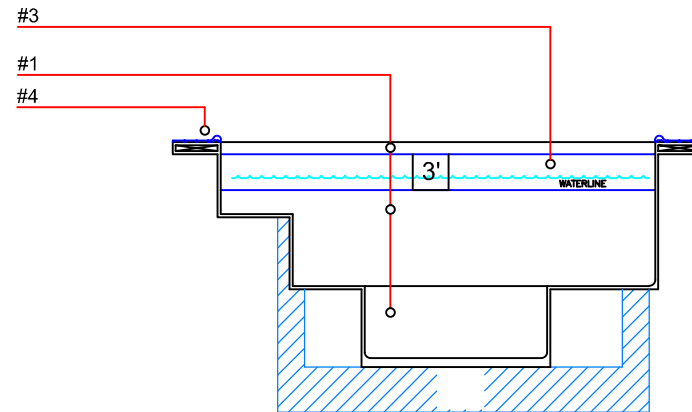
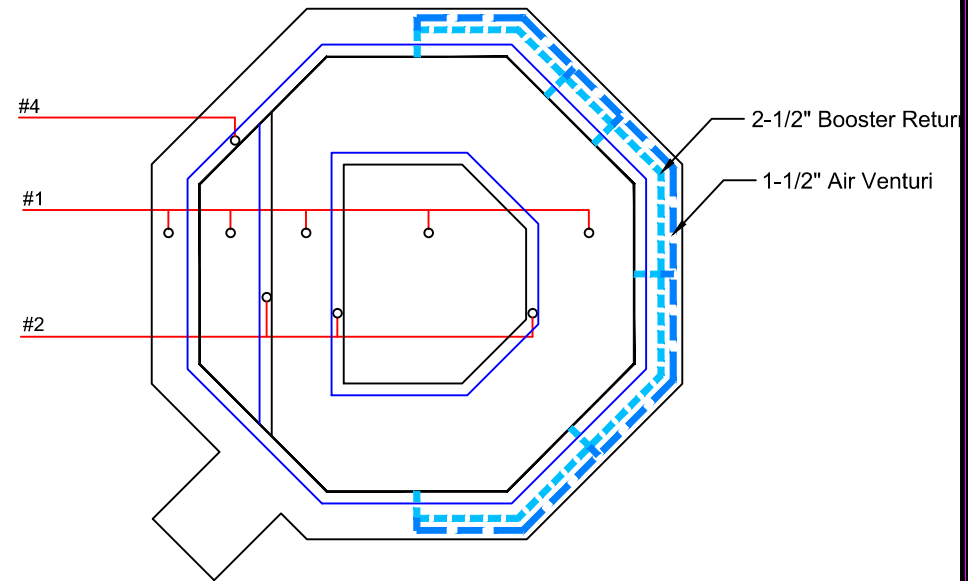
PAGE 1 OF 6

These drawings, concepts, and details contained herein are the original proprietary designs of NESPA ENTERPRISES, developed over many years of experience in the industry and as such are protected by the copyright laws of the United States Government. Reproduction of any of the above without written permission to do so by NESPA ENTERPRISES, is illegal.

- #1 - FIELD TILE: Dal Tile 2 X 2 Biscuit - D317
- #2 - WATERLINE (optional): Dal Tile 1 X 1 Sonterra Lt Blue - SR66
- #3 - BENCH & STEP EDGES (optional): Dal Tile 2 X 2 Waterfall - D169
- #4 - TILED LIP (optional): Dal Tile - C701 - Biscuit - D317

Date: _____
 Approval: _____

#1 - GROUT: _____
 #2 - GROUT: _____
 #3 - GROUT: _____



PRELIMINARY

ALL DIMENSIONS SUBJECT TO 1/4" TOLERANCES

These drawings, concepts, and details contained herein are the original proprietary designs of NESPA ENTERPRISES, developed over many years of experience in the industry and as such are protected by the copyright laws of the United States Government. Reproduction of any of the above without written permission to do so by NESPA ENTERPRISES, is illegal.

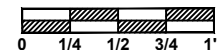
NESPA ENTERPRISES INC.
 2800 Richter Ave. Ste. C Oroville, CA 95966
 Office: (530) 534-9910 Fax: (530) 534-9915
 E-Mail: jim@tiledspas.com Web Site: www.tiledspas.com



If printing as a PDF:

Page Scaling:

SCALE
 3/8" = 1'

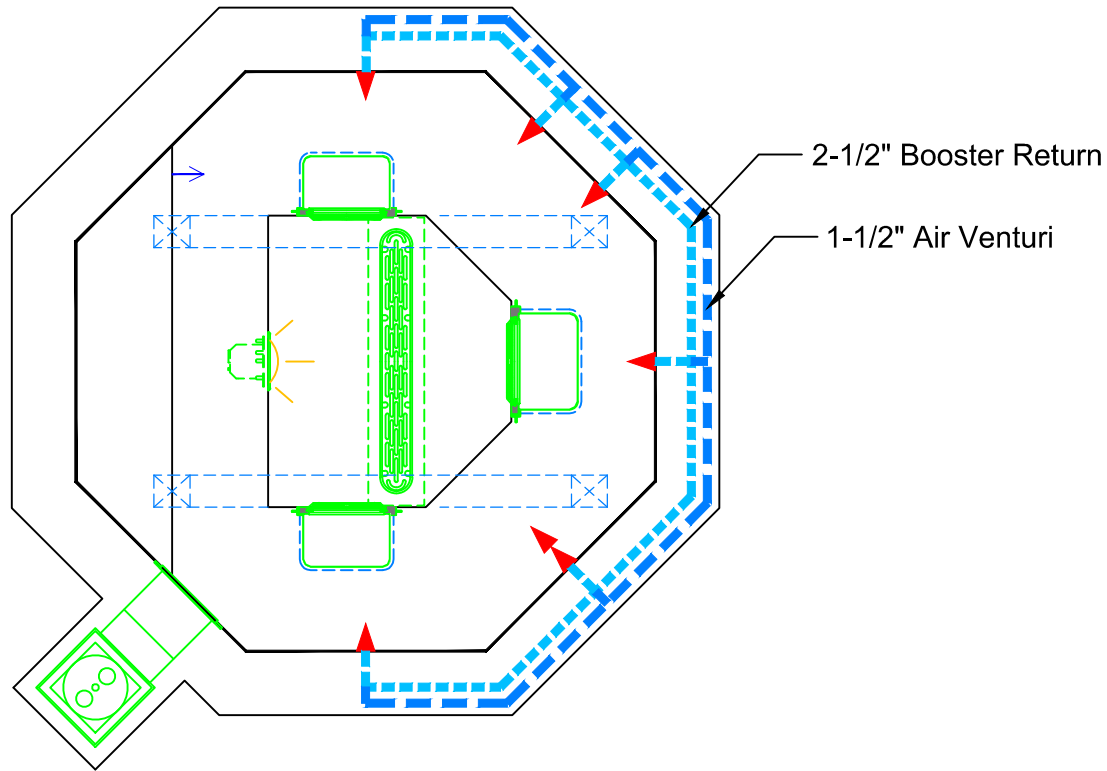


DWG NAME
 COMMERCIAL MAXIMA SHOW SPA

DATE
 9/30/2011

DWG TYPE
 Tile

SHEET
 PAGE 2 OF 6



PRELIMINARY

ALL DIMENSIONS SUBJECT TO 1/4" TOLERANCES

These drawings, concepts, and details contained herein are the original proprietary designs of NESPA ENTERPRISES, developed over many years of experience in the industry and as such are protected by the copyright laws of the United States Government. Reproduction of any of the above without written permission to do so by NESPA ENTERPRISES, is illegal.

NESPA ENTERPRISES INC.

2800 Richter Ave. Ste. C Oroville, CA 95966

Office: (530) 534-9910

Fax: (530) 534-9915

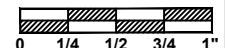
E-Mail: jim@tiledspas.com Web Site: www.tiledspas.com



If printing as a PDF:

Page Scaling:

SCALE
1/2" = 1'



DWG TYPE

Plumbing

DWG NAME
COMMERCIAL MAXIMA SHOW SPA

DATE
9/30/2011

SHEET
PAGE 3 OF 6



NESPA ENTERPRISES INC.

2800 Richter Ave. Suite C Oroville, CA 95966

Office: (530) 534-9910

Fax: (530) 534-9915

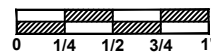
E-Mail: sales@tiledspas.com Web Site: www.tiledspas.com



If printing as a PDF:

Page Scaling:

SCALE
N/A



DWG TYPE

Pic

DWG NAME
COMMERCIAL MAXIMA SHOW SPA

DATE
9/30/2011

SHEET
PAGE 4 OF 6

These drawings, concepts, and details contained herein are the original proprietary designs of NESPA ENTERPRISES, developed over many years of experience in the industry and as such are protected by the copyright laws of the United States Government. Reproduction of any of the above without written permission to do so by NESPA ENTERPRISES, is illegal.



NESPA ENTERPRISES INC.

2800 Richter Ave. Suite C Oroville, CA 95966

Office: (530) 534-9910

Fax: (530) 534-9915

E-Mail: sales@tiledspas.com Web Site: www.tiledspas.com

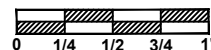


If printing as a PDF:

Page Scaling:

SCALE

N/A



DWG TYPE

Pic (3)

DWG NAME
COMMERCIAL MAXIMA SHOW SPA

DATE
9/30/2011

SHEET
PAGE 6 OF 6

These drawings, concepts, and details contained herein are the original proprietary designs of NESPA ENTERPRISES, developed over many years of experience in the industry and as such are protected by the copyright laws of the United States Government. Reproduction of any of the above without written permission to do so by NESPA ENTERPRISES, is illegal.