

COLORBODY™ PORCELAIN  
EVER™





EVER™

COLORBODY™ PORCELAIN



*floor • wall • countertop • exterior*

*Everlasting style and performance in a porcelain tile*

Ever offers the timeless versatility of limestone in a durable porcelain tile. Limestone has been used to create some of the most famous structures all over the world. Bring that timelessness to your space in a porcelain tile that is constructed to stand the test of time.





*Natural Stone Visual*

- True interpretation of natural stone creates timeless visual harmony
- Technical surface with micro-flakes of variable dimensions offer natural movement and layering

*Contemporary Color Palette & Visuals*

- The warm and cool palette offers six contemporary colors
- The colors can be mixed, matched, and coordinated with any space
- Multiple surface textures offer infinite creative potential

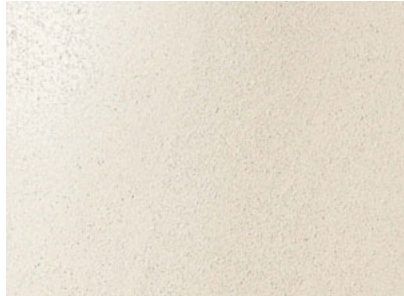
*Flexible Tile Size Options*

- Offers complete solutions for large commercial projects

EVER™ COLORBODY™ PORCELAIN

*floor • wall • countertop • exterior*

*Light Polished Field Tile*



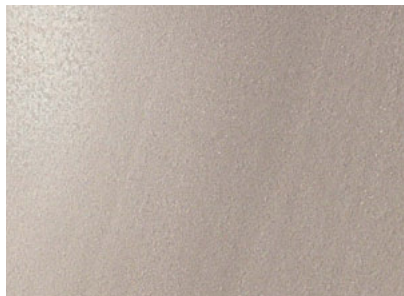
MOON EV01



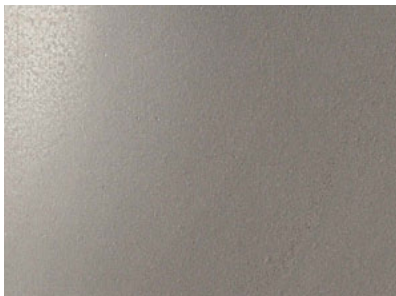
LIGHT EV02



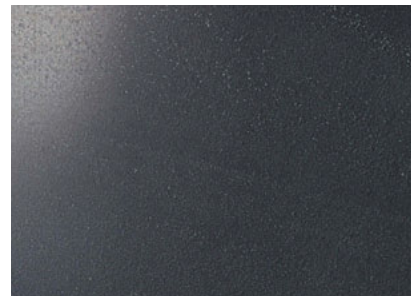
ARTIC EV03



ROCK EV04

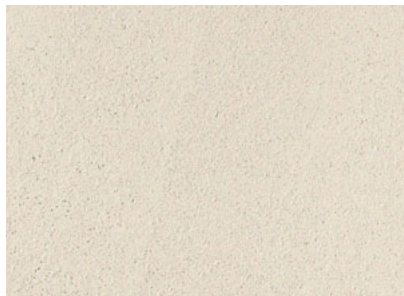


EARTH EV05



DARK EV06

*Unpolished Field Tile*



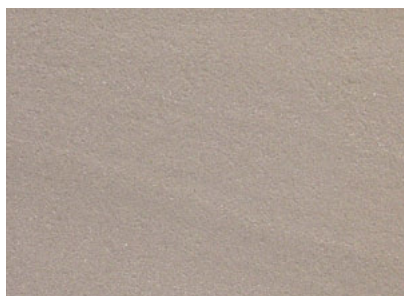
MOON EV01



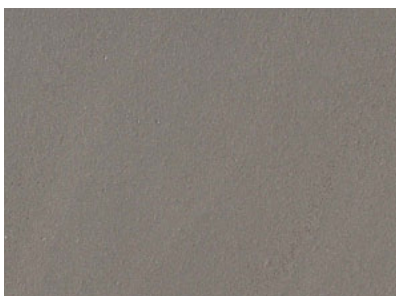
LIGHT EV02



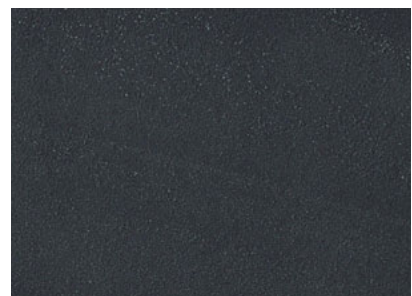
ARTIC EV03



ROCK EV04



EARTH EV05



DARK EV06



*Textured Field Tile*



MOON EV01



LIGHT EV02



CLOSE-UP  
OF TILE

ARTIC EV03



ROCK EV04



EARTH EV05



DARK EV06

*The Timeless Visual of Limestone*



DIRECTED SHADES  
& VEINING

CLOSE-UP  
OF TILE

MICRO-FLAKES OF  
VARIABLE DIMENSION





Photo features Rock Textured in 12 x 24 on the pool deck and Light Unpolished in 12 x 24 on the wall.

## SIZES

		SQ. FT. CARTON	PCS. PER CARTON
24 x 48 Field Tile*** (Unpolished & Light Polished)	(23.42" x 47.04") (60 cm x 120 cm)	15.5	2
24 x 24 Field Tile (Unpolished*, Light Polished**, Textured***)	(23.42" x 23.42") (60 cm x 60 cm)	11.62	3
18 x 18 Field Tile* (Unpolished)	(17.56" x 17.56") (45 cm x 45 cm)	10.89	5
16 x 24 Field Tile*** (Unpolished & Textured)	(15.59" x 23.42") (40 cm x 60 cm)	10.33	4
12 x 24 Field Tile (Unpolished* & Textured**)	(11.65" x 23.42") (30 cm x 60 cm)	11.62	6
8 x 24 Field Tile*** (Unpolished & Textured)	(7.71" x 23.42") (20 cm x 60 cm)	9.04	7
12 x 24 Brick Accent*	(11.65" x 23.42") (30 cm x 60 cm)	--	4

\* Stocked items  
\*\* Special Order with 2 week lead time  
\*\*\* Special Order with 6-8 week lead time

## RESIDENTIAL USAGE

FLOORS	WALLS	COUNTERTOPS	EXTERIOR PATIOS	EXTERIOR POOL DECKS
F	W	C	EP <sup>▲</sup>	ED <sup>◆</sup>

Suitable for exterior applications in freezing and non-freezing climates when proper installation methods are followed.

▲ Unpolished & Textured surfaces  
◆ Textured surface only

## COMMERCIAL USAGE

	INTERIOR			EXTERIOR	
	RESIDENTIAL	LIGHT COMMERCIAL	COMMERCIAL	RESIDENTIAL	COMMERCIAL
Floors/Patios	✓	✓	✓	✓ <sup>▲</sup>	✓ <sup>▲</sup>
Walls/Backsplashes	✓	✓	✓	✓	✓
Countertops	✓	✓	✓	✓	✓
Pool Decking	✓ <sup>◆</sup>	✓ <sup>◆</sup>	✓ <sup>◆</sup>	✓ <sup>◆</sup>	✓ <sup>◆</sup>
Pool Linings	✓	✓	✓	✓	✓

Suitable for exterior applications in freezing and non-freezing climates when proper installation methods are followed.

▲ Unpolished & Textured surfaces  
◆ Textured surface only

## NOTES

Manufacturer Warning: Tile with a polished surface has a dynamic coefficient of friction less than 0.42 as measured by the DCOF Acutest method. Tiles with DCOF Acutest values less than 0.42 are not recommended for use in areas with wet or slippery conditions. If such tiles are used as a walking surface where water, ice, oil, grease and/or other substances are present, such a condition could cause a reduction in foot traction and become unexpectedly slippery resulting in a fall or personal injury. See ANSI standard A137.1 section 6.2.2.1.10, available at [www.tileusa.com](http://www.tileusa.com).

Special care should be taken when grouting with dark pigmented colors. A grout release is recommended to prevent finely powdered pigments from lodging in the pores of the surface. Use of a latex modified thin-set is recommended for installation.


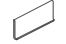
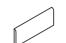

Special care needs to be given when installing tiles 20" and larger. Please refer to [www.daltile.com/LargeTiles](http://www.daltile.com/LargeTiles) for information.

Since there are variations in all fired ceramic products, tile and trim supplied for your particular installation may not match these samples. Final color selection should be made from actual tiles and trim and not from tile and trim samples or color reproductions. Manufactured in accordance with ANSI A137.1 standards.

Water, oil, grease, etc. create slippery conditions. Floor applications with exposure to these conditions require extra caution in product selection. Not for use on ramps.

For additional information, refer to "Factors to Consider" at <http://daltile.com/factors-to-consider.cfm>.

## TRIM (Available in Unpolished only)

	TYPE	NUMBER	SIZE	PCS. PER CARTON
	Gradino Step Tread***	S6CF6	12 x 24	6
	Cove Base**■	S-36C9T	6 x 12	30
	Bullnose*	S-43F9	3 x 24	10
	Cove Corner*	SC-36C9T	1 x 6	15

\* Stocked items  
\*\* Special Order with 2 week lead time  
\*\*\* Special Order with 6-8 week lead time

■ Cove Base trim is intended to coordinate with floor field tile in the standard 90-degree installation position.

## SHADE VARIATION

 HIGH (V3)  
Color variation from tile to tile and within each tile.

## INSTALLATION

THICKNESS	GROUT JOINT RECOMMENDATION
5/16"	1/8" (3/16" when rectangular sizes are used in a staggered brick-joint pattern, where the overlap does not exceed 33%)

## DYNAMIC C.O.F. (WET) : 1-2

The higher the rating, the higher the slip resistance.

1 < 0.42 (Light Polished)

2 ≥ 0.42 (Textured & Unpolished)

## STATIC C.O.F. (WET) : 1-2

1 0.50 - 0.59 (Light Polished)

2 ≥ 0.60 (Textured & Unpolished)

## TEST RESULTS

	ASTM#	TEXTURED	UNPOLISHED	POLISHED
Water Absorption	C373	< .05%	< .05%	< .05%
Breaking Strength	C648	> 450 lbs	> 450 lbs	> 450 lbs
Scratch Hardness	MOHS	8	8	8
Chemical Resistance	C650	Resistant	Resistant	Resistant
Dynamic C.O.F.	A137.1	Wet: ≥ 0.42	Wet: ≥ 0.42	Wet: < 0.42
Static C.O.F.	C1028	Wet: ≥ 0.65 Dry: ≥ 0.80	Wet: ≥ 0.60 Dry: ≥ 0.70	Wet: 0.50 - 0.59 Dry: ≥ 0.70

Dynamic C.O.F. (Wet) value as measured by the DCOF AcuTest™ helps to assess a product's suitability for a commercial environment. For more information, visit our website at [www.daltile.com/DCOF](http://www.daltile.com/DCOF).



EVER™

COLORBODY™ PORCELAIN



*floor • wall • countertop*



**daltile**  
**greenworks™**  
ENVIRONMENTAL LEADERSHIP THAT WORKS

By their very design, Daltile products can help make it easier for you to earn LEED™ points and/or points towards many industry leading green home building programs. From using recycled material content to establishing manufacturing facilities within 500 miles of your project, we help ensure you don't have to compromise your design to be environmentally conscious. For detailed information, visit [daltilegreenworks.com](http://daltilegreenworks.com).



TRU-EDGE

CERTIFIED  
**PORCELAIN**  
TILE  
0.5% or less water absorption



7834 C. F. Hawn Freeway | Dallas, TX 75217 | 214.398.1411 | 800.933.TILE  
For more information about Daltile products and services, visit our website at [daltile.com](http://daltile.com)

©2012 Dal-Tile Corporation (11/12) SSDTEVER12