

| SPECIFICATIONS | |
|----------------|------------|
| DRY WEIGHT: | 2700 LBS. |
| TOTAL WEIGHT: | 11618 LBS. |
| WATER: | 1070 GAL. |
| VOLUME: | 143 Cu.Ft. |
| WEIGHT: | 8918 LBS. |
| SURFACE AREA: | 65 SQ. FT. |
| IAPMO#: | 1138 |
| FDA#: | 2030305 |

SKID SUPPORT STRUCTURE* BONDED TO SPA

*SKIDS SUPPLIED BY NESPA

JET **FILL**

SUCTION

5" HIGH FLOW SUCTIONS
8.39 SQ. IN. OPEN AREA
208 GPM AT 1.5 FT/SEC
COMPLIES W/ ANSI CODE A112.19
UL APPROVED

EQUALIZER

4" 3.61 SQ. IN. OPEN AREA,
COMPLIES W/ ANSI CODE A112.19

MAIN DRAIN

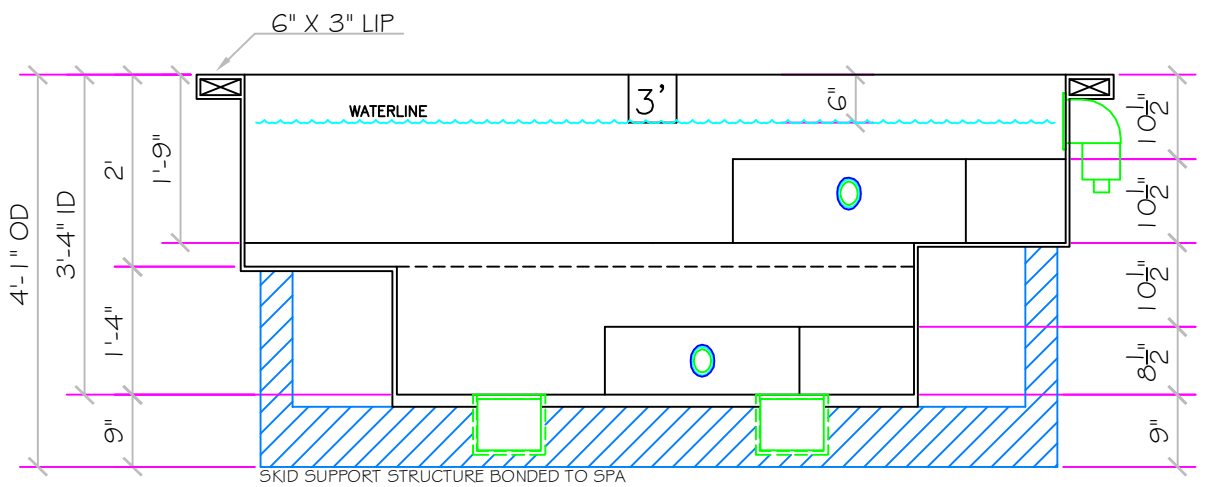
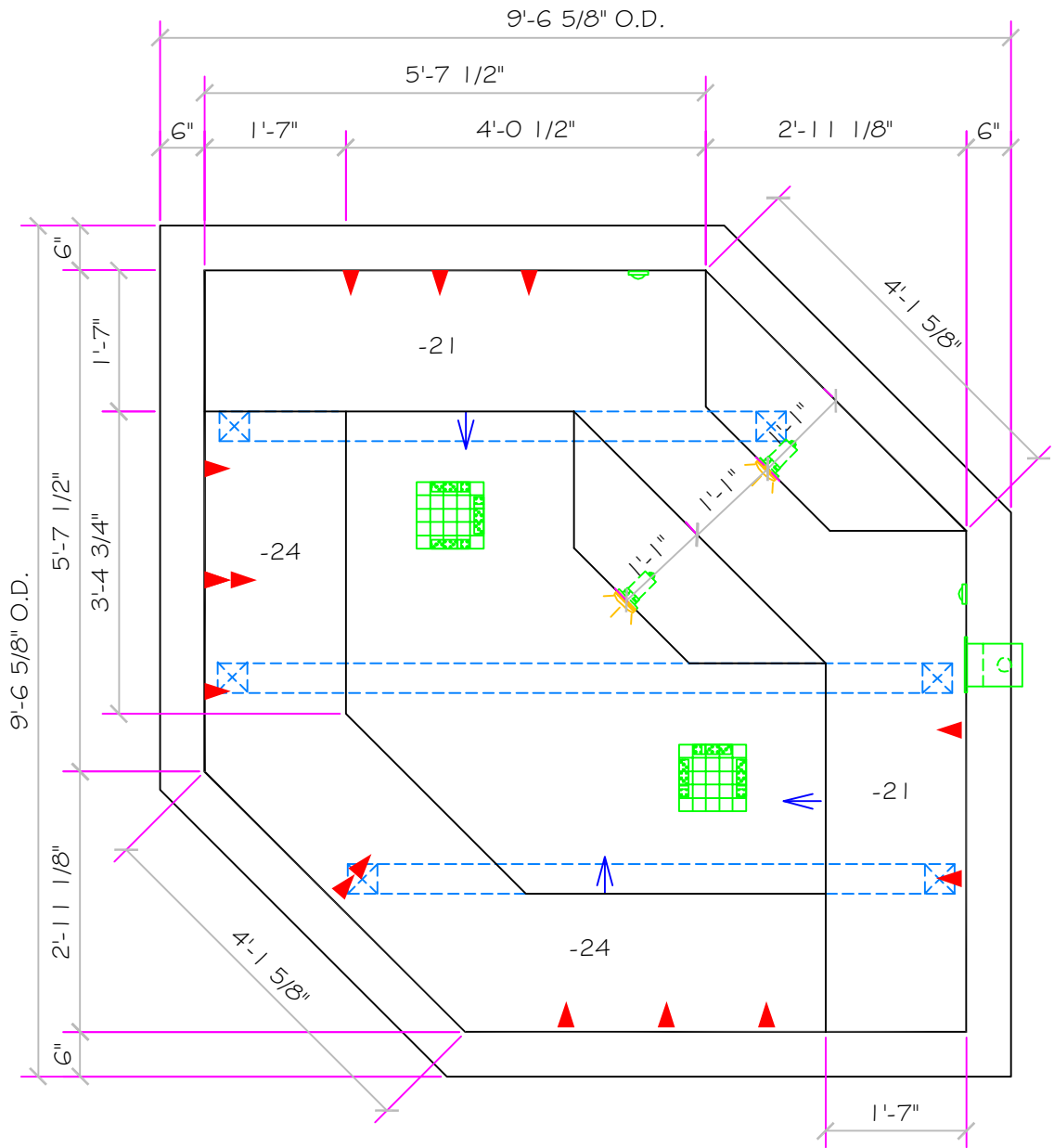
9" X 9" FRAME,
49 SQ. IN. OPEN AREA,
299 GPM @ 1 1/2 FT/SEC

LIGHT NICHE

LOW VOLTAGE LIGHT
U.L. APPROVED

SKIMMER

FRONT ACCESS
SKIMMER, NSF
APPROVED

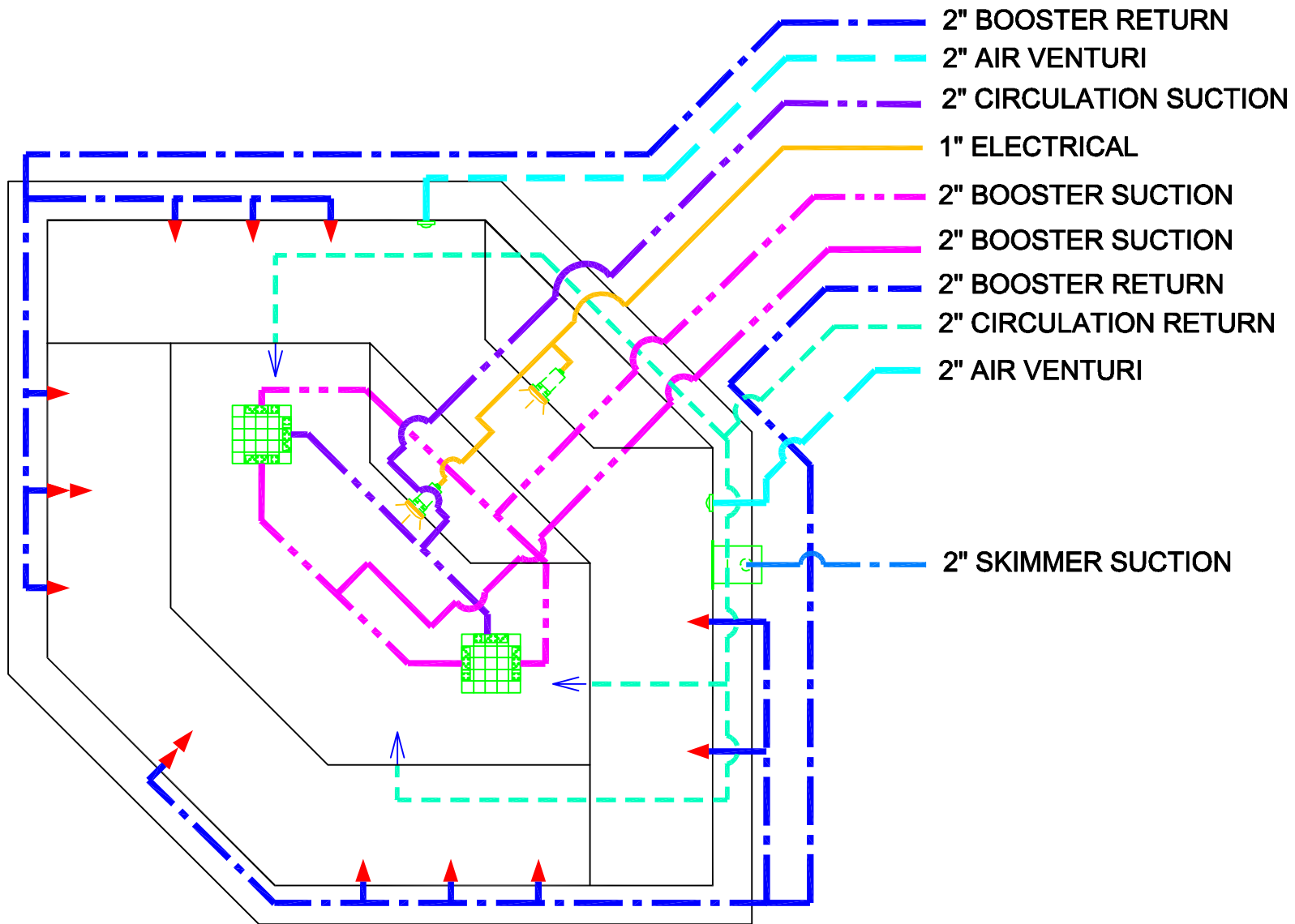


ALL DIMENSIONS SUBJECT TO 1/4" TOLERANCES

NESPA ENTERPRISES INC.
2800 Richter Ave. Suite C Oroville, CA 95966
Office: (530) 534-9910 Fax: (530) 534-9915
E-Mail: sales@tiledspas.com Web Site: www.tiledspas.com

| | | | |
|--------------------|----------------|-------------------|-------------------|
| SIZE A | DWG TYPE SD | DWG NO. FILOON | REV 0 |
| SCALE 1/2" = 1'-0" | | DATE 4/19/2007 | SHEET PAGE 1 OF 3 |

These drawings, concepts, and details contained herein are the original proprietary designs of NESPA ENTERPRISES, developed over many years of experience in the pool and spa industry and as such are protected by the copyright laws of the United States Government. Reproduction of any of the above without written permission to do so by NESPA ENTERPRISES, is illegal.



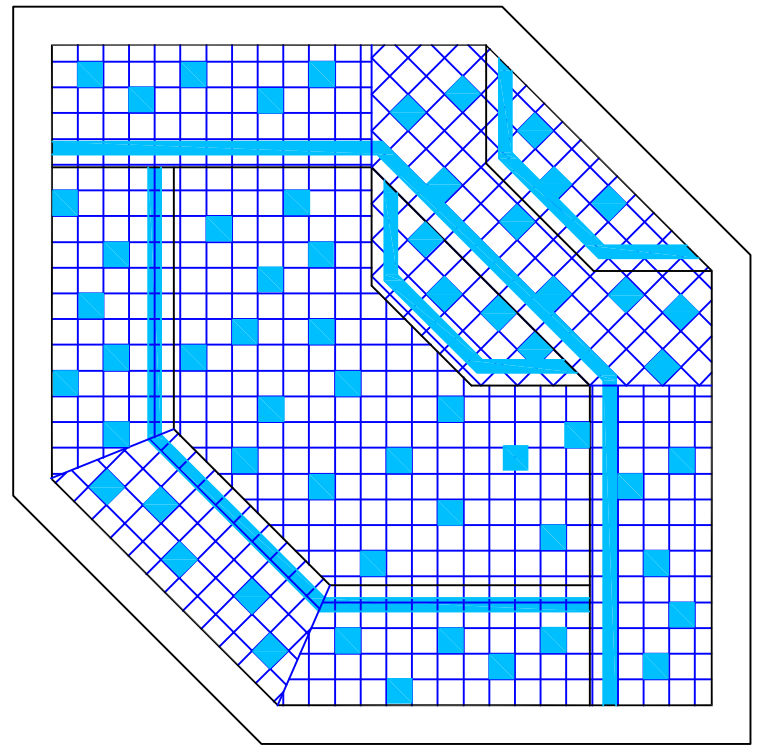
ALL DIMENSIONS SUBJECT TO 1/4" TOLERANCES

These drawings, concepts, and details contained herein are the original proprietary designs of NESPA ENTERPRISES, developed over many years of experience in the pool and spa industry and as such are protected by the copyright laws of the United States Government. Reproduction of any of the above without written permission to do so by NESPA ENTERPRISES, is illegal.

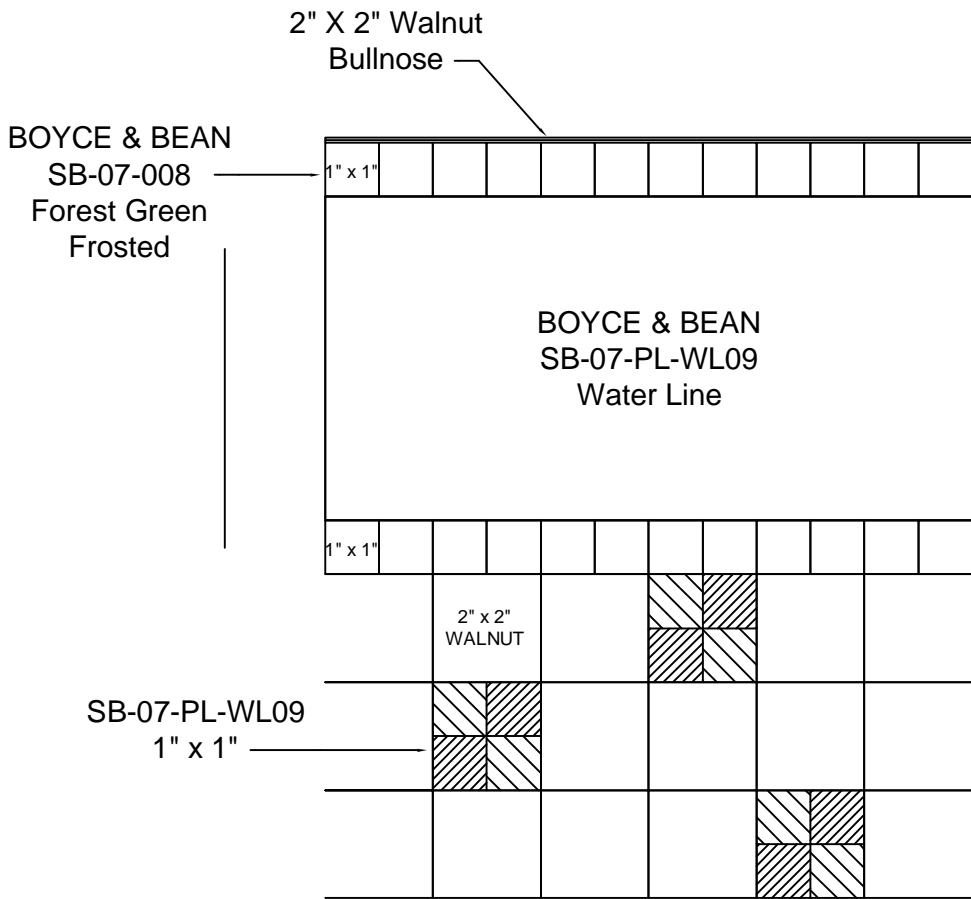
NESPA ENTERPRISES INC.
 2800 Richter Ave. Ste. C Oroville, CA 95966
 Office: (530) 534-9910 Fax: (530) 534-9915
 E-Mail: sales@tiledspas.com Web Site: www.tiledspas.com

| | | | |
|-----------------|----------------------|-------------------|-------------------|
| SIZE A | DWG TYPE Plumbing | DWG NO. FILOON | REV 0 |
| SCALE 1/2" = 1' | | DATE 4/19/2007 | SHEET PAGE 2 OF 3 |

- #1 - FIELD TILE : 2X2 WALNUT
(And Bench and Step Edge)
- #2 - WATERLINE (optional): BOYCE & BEANSB-07-PL-WL09
- #3 - BENCH & STEP TRIM BOYCE & BEAN SB-07-008
(2" behind Edges) Forest Green Frosted
- #4 - TILED LIP (horz & vert.) 2" X 2" Walnut Bullnose



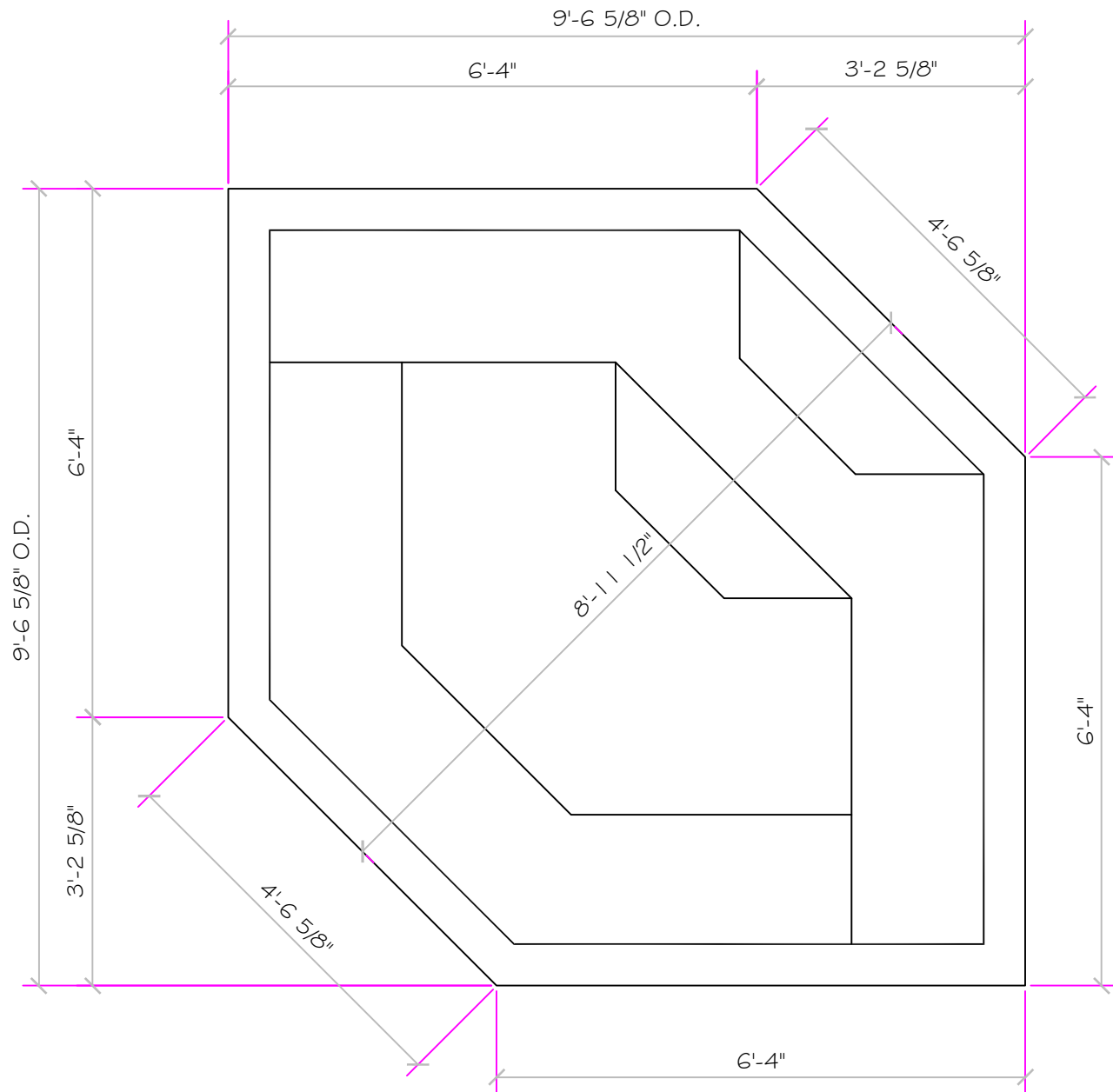
Date: _____
 Approval: _____
 #1 - GROUT: _____
 #2 - GROUT: _____
 #3 - GROUT: _____



ALL DIMENSIONS SUBJECT TO 1/4" TOLERANCES

| | | | | |
|--|-----------|------------------|-------------------|----------|
| NESPA ENTERPRISES INC. 2800 Richter Ave. Suite C Oroville, CA 95966 Office: (530) 534-9910 Fax: (530) 534-9915 E-Mail: sales@tiledspas.com Web Site: www.tiledspas.com | SIZE A | DWG TYPE TILE | DWG NO. FILOON | REV 0 |
| | SCALE N/A | DATE 4/19/2007 | SHEET PAGE 3 OF 3 | |

These drawings, concepts, and details contained herein are the original proprietary designs of NESPA ENTERPRISES, developed over many years of experience in the pool and spa industry and as such are protected by the copyright laws of the United States Government. Reproduction of any of the above without written permission to do so by NESPA ENTERPRISES, is illegal.



ALL DIMENSIONS SUBJECT TO 1/4" TOLERANCES

NESPA ENTERPRISES INC.

2800 Richter Ave. Suite C Oroville, CA 95966

Office: (530) 534-9910

Fax: (530) 534-9915

E-Mail: sales@tiledspas.com Web Site: www.tiledspas.com

SIZE
A

DWG TYPE

FIT

DWG NO.

FILOON

REV

0

SCALE 1/2" = 1'-0"

DATE

7/3/2007

SHEET

PAGE 1 OF 1

These drawings, concepts, and details contained herein are the original proprietary designs of NESPA ENTERPRISES, developed over many years of experience in the pool and spa industry and as such are protected by the copyright laws of the United States Government. Reproduction of any of the above without written permission to do so by NESPA ENTERPRISES, is illegal.