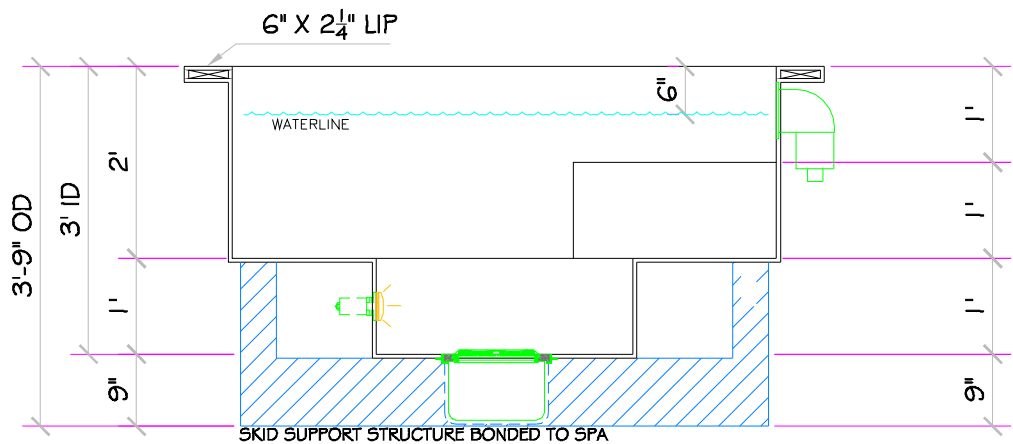
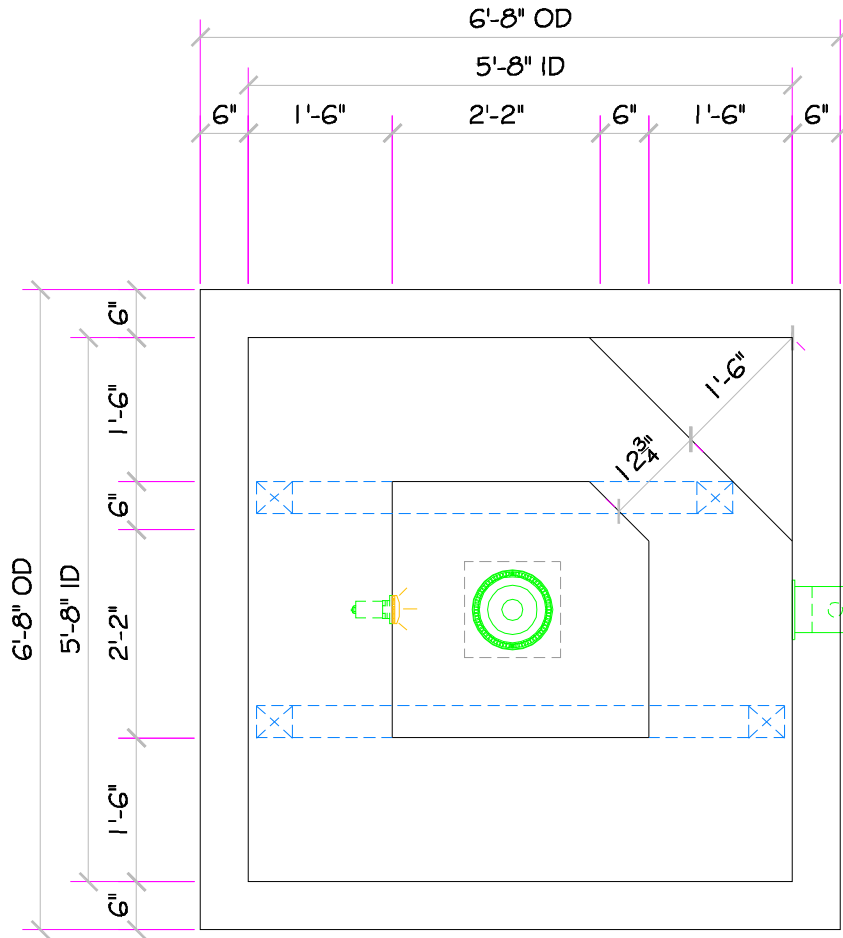


MONACO

ALL TILED SPA - Fits 3 Adults

SPECIFICATIONS	
DRY WEIGHT:	1600 LBS.
TOTAL WEIGHT:	5903 LBS.
WATER:	516 GAL.
VOLUME:	69 Cu.Ft.
WEIGHT:	4303 LBS.
SURFACE AREA:	32 SQ. FT.
IAPMO#:	1138
FDA#:	2030305

SKID SUPPORT STRUCTURE* BONDED TO SPA	
	*SKIDS SUPPLIED BY NESPA
LIGHT NICHE	
	PAL 2000 LV LIGHT, 12 VOLT 50 WATT, U.L. APPROVED
SKIMMER	
	FRONT ACCESS SKIMMER, NSF APPROVED
MAIN DRAIN	
	AquaStar 32CDLFR, 32" Channel Drain, Approved Max Flow Rate: Floor = 236 GPM @ 3.4 fps Wall = 136 GPM @ 1.9 fps V.G.B Approved Safety Drain
JET	
	HYDRO INLETS 1-1/2" WATER - 1-1/2" AIR HYDROAIR #10-5100 COMPLIES W/ ANSI CODE ASME A112.19.8-07 UL APPROVED
RETURN	
	INLET FITTINGS 1-1/2" WALL TYPE W/ EYEBALL HYDROAIR #10-3500 COMPLIES W/ ANSI CODE ASME A112.19.8-07 UL APPROVED
FILL	
	INLET FITTINGS 1-1/2" WALL TYPE W/ EYEBALL HYDROAIR #10-3500 COMPLIES W/ ANSI CODE ASME A112.19.8-07 UL APPROVED



*** Complies with V.G.B. Pool and Spa Safety Act**

ALL DIMENSIONS SUBJECT TO 1/4" TOLERANCES

Apr 22, 2009 - 2:54pm

NESPA ENTERPRISES INC.

2800 Richter Ave. Suite C Oroville, CA 95966

Office: (530) 534-9910

Fax: (530) 534-9915

E-Mail: sales@tiledspas.com Web Site: www.tiledspas.com



DWG NAME
NESPA_RESIDENTIAL_MODELS

DWG TYPE
SD

SCALE **1/2" = 1'**

DATE **4/22/2009**

SHEET **PAGE 1 OF 1**

These drawings, concepts, and details contained herein are the original proprietary designs of NESPA ENTERPRISES, developed over many years of experience in the pool and spa industry and as such are protected by the copyright laws of the United States Government. Reproduction of any of the above without written permission to do so by NESPA ENTERPRISES, is illegal.