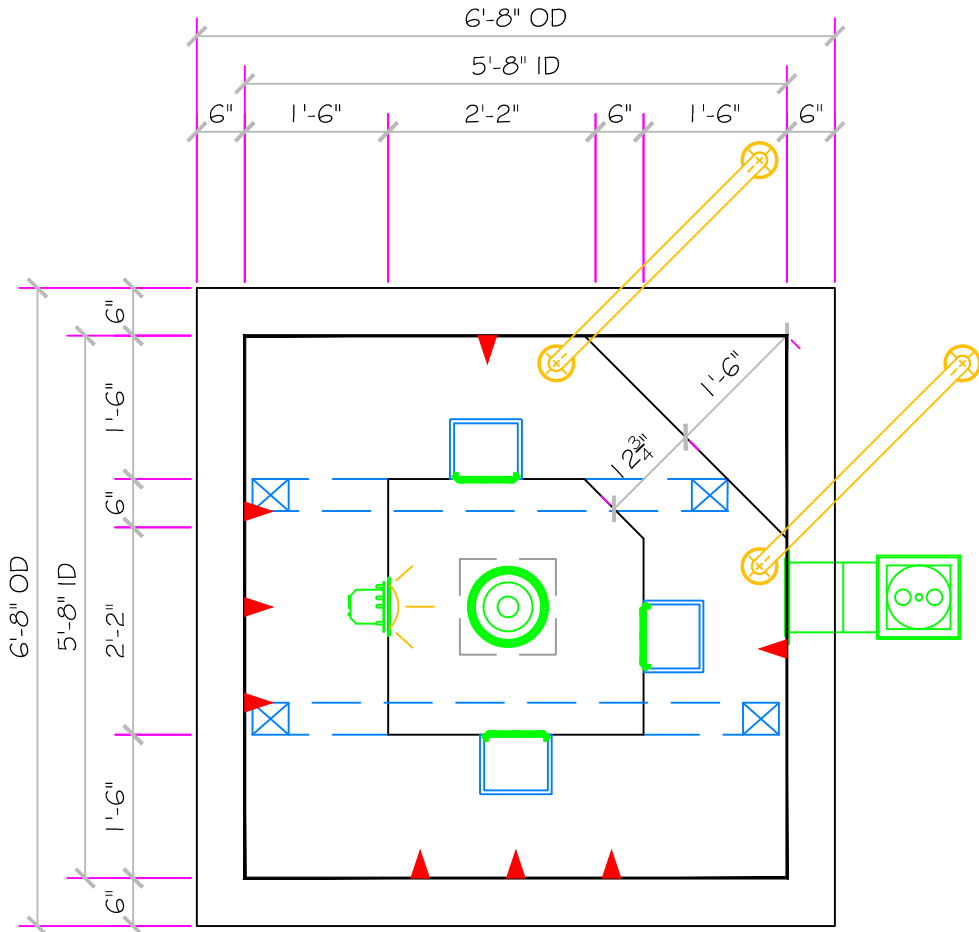


SPECIFICATIONS	
DRY WEIGHT:	1600 LBS.
TOTAL WEIGHT:	5903 LBS.
WATER:	516.1 GAL.
VOLUME:	69 Cu.Ft.
WEIGHT:	4303 LBS.
SURFACE AREA:	32.1 SQ. FT.
IAPMO#:	1138
FDA#:	2030305

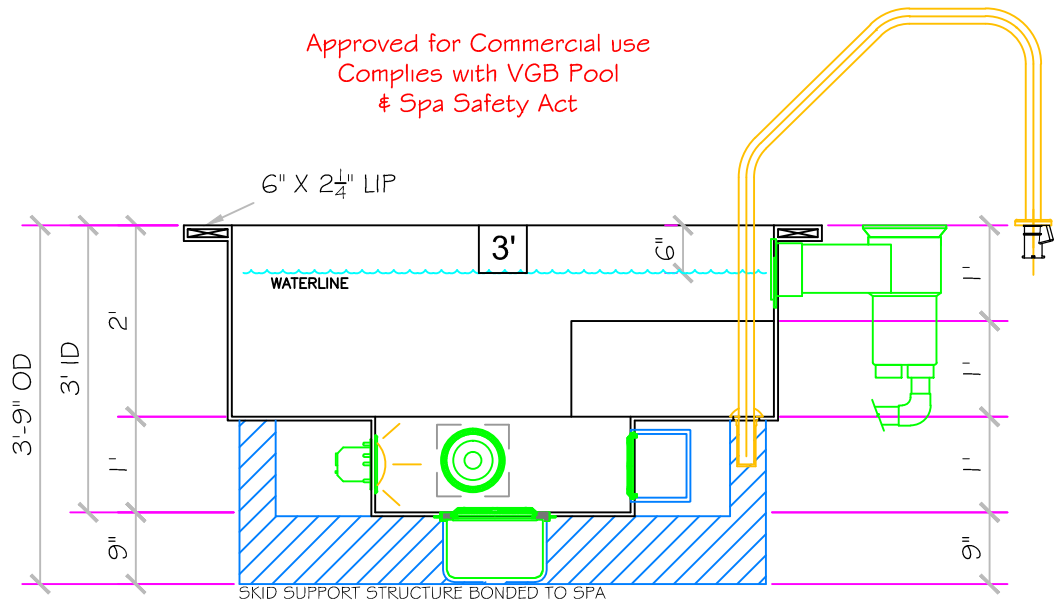
# MONACO

## ALL TILED SPA - Fits 3 Adults

<b>SKID SUPPORT STRUCTURE* BONDED TO SPA</b>	
	*SKIDS SUPPLIED BY NESPA
<b>LIGHT NICHE</b>	
	SPA BRIGHT, 120 V, 100 WATT, 50' CORD, U.L. APPROVED
<b>MAIN DRAIN</b>	
	AquaStar 32CDFLFR, 32" Channel Drain, Approved Max Flow Rate: Floor = 236 GPM @ 3.4 fps Wall = 136 GPM @ 1.9 fps V.G.B Approved Safety Drain
<b>SIDEWALL SUCTION</b>	
	AquaStar 8AV, 8" Dia Frame, Approved Max Flow Rate: Floor = 88 GPM @ 3.2 fps Wall = 70 GPM @ 2.6 fps 8.8 Sq In - Open Area V.G.B Approved Safety Drain
<b>EQUALIZER</b>	
	5" HIGH FLOW SUCTIONS Waterway 640-357xV Super Hi-Flo Suction Assy. Max Flow 180 GPM Complies w/ ANSI Code ASME A112.19.8-2007 & VGB 2008
<b>SKIMMER</b>	
	HAYWARD SP-1084FVE SURFACE SKIMMER W/ EQUALIZER, NSF APPROVED
<b>JET</b>	
	<b>HYDRO INLETS</b> 1-1/2" WATER - 1-1/2" AIR HYDROAIR #10-5100 COMPLIES W/ ANSI CODE ASME A112.19.8-07 UL APPROVED
<b>RETURN</b>	
	<b>INLET FITTINGS</b> 1-1/2" WALL TYPE W/ EYEBALL HYDROAIR #10-3500 COMPLIES W/ ANSI CODE ASME A112.19.8-07 UL APPROVED
<b>FILL</b>	
	<b>INLET FITTINGS</b> 1-1/2" WALL TYPE W/ EYEBALL HYDROAIR #10-3500 COMPLIES W/ ANSI CODE ASME A112.19.8-07 UL APPROVED



Approved for Commercial use  
Complies with VGB Pool  
& Spa Safety Act



SKID SUPPORT STRUCTURE BONDED TO SPA