



NESPA
TILED SPAS

Production Booklet

for

Mtn. Trek Cold Plunge

2800 Richter Ave. Suite C, Oroville, CA 95965 • **voice:** (530)534-9910
fax: (530)534-9915 • **email:** sales@tiledspas.com • **website:** www.tiledspas.com



RECOMMENDED MAINTENANCE

Please Note:

These are only recommended guidelines to care for a Nespa all tiled spa. Local codes may require additional procedures, therefore consult with a pool professional that is LA county Health Department certified for more information on local codes and requirements.

SPA SURFACE

Your spa tile is acid resistant and frost-proof. The Tile does not absorb germs or algae. Tile does not stain and is very easy to clean. Color does not fade or lose its luster. All grouts are epoxy based and are extremely durable. To remove scum line use soft nylon brush and small amounts of biodegradable soaps. Do not use abrasive brushes or chemicals.

MAINTENANCE

A. CHEMICALS:

- 1) It is important to maintain a chlorine residual of 2 PPM in the spa. That residual can be provided by chlorine or bromine.
- 2) It is recommended to use Bromine or dichlor (granular) forms of chlorine. If bromine Tabs are used we suggest floating or inline dispenser.
- 3) Never use acid to lower Ph in the tile spa.
- 4) Never use trichlor chlorine (1" or 3") tablets in the Nespa spas.
- 5) Never place tablets in skimmer basket.

B. DRAINING THE SPA:

- 1) It is recommended to drain the spa at least once every 2 months depending on bath load and water clarity.
- 2) The spa should be drained through valve exiting re-circulation pump in the spa equipment room or sump pump.
- 3) Note: Use caution to drain spa in the winter months or rainy season when water table is at its highest. It is possible for the spa to float due to hydraulic pressure from surrounding water table. We advise that you consult with your local spa specialist prior to draining the spa.

C. SPA EQUIPMENT:

- 1) Clean filter cartridge at least once every month, or when needed; i.e., if water clarity does not improve after several days.
- 2) Keep area free and clear from leaves and debris build-up.
- 3) Keep area free and clear from flooding.

D. SPA LIGHT:

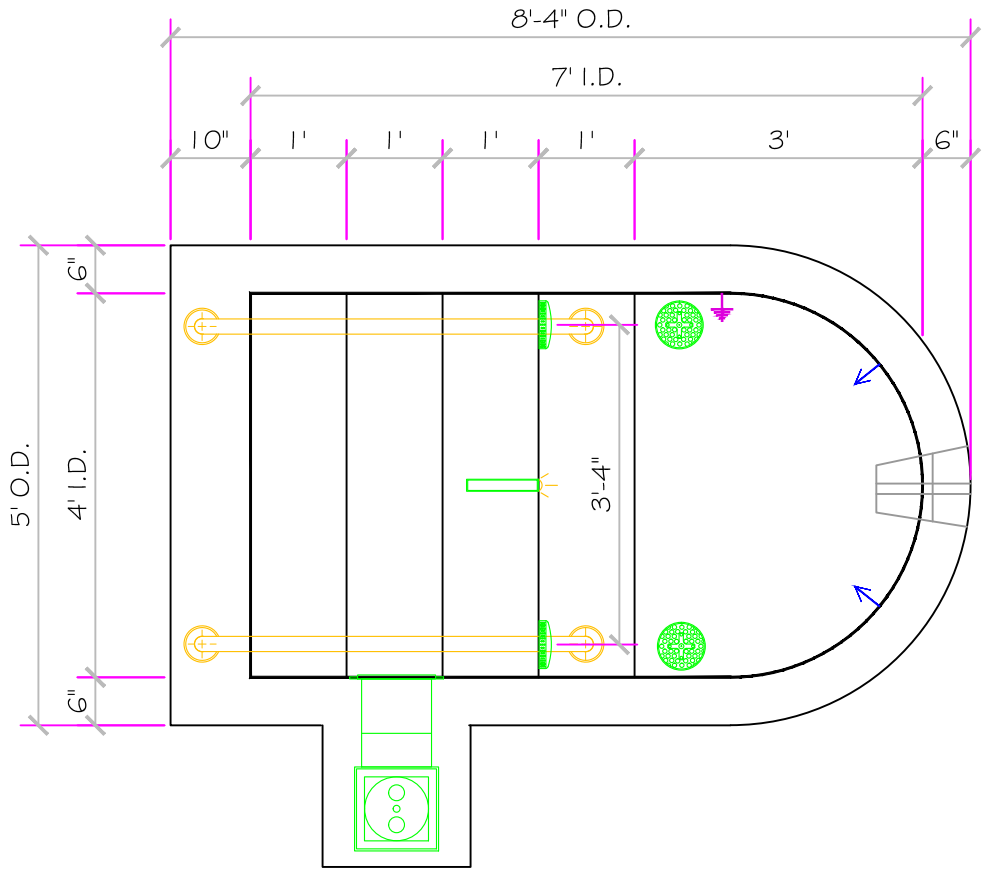
- 1) Spa light has to be on GFCI circuit. It is controlled at spa side with ON/OFF.

E. TILE SERVICING:

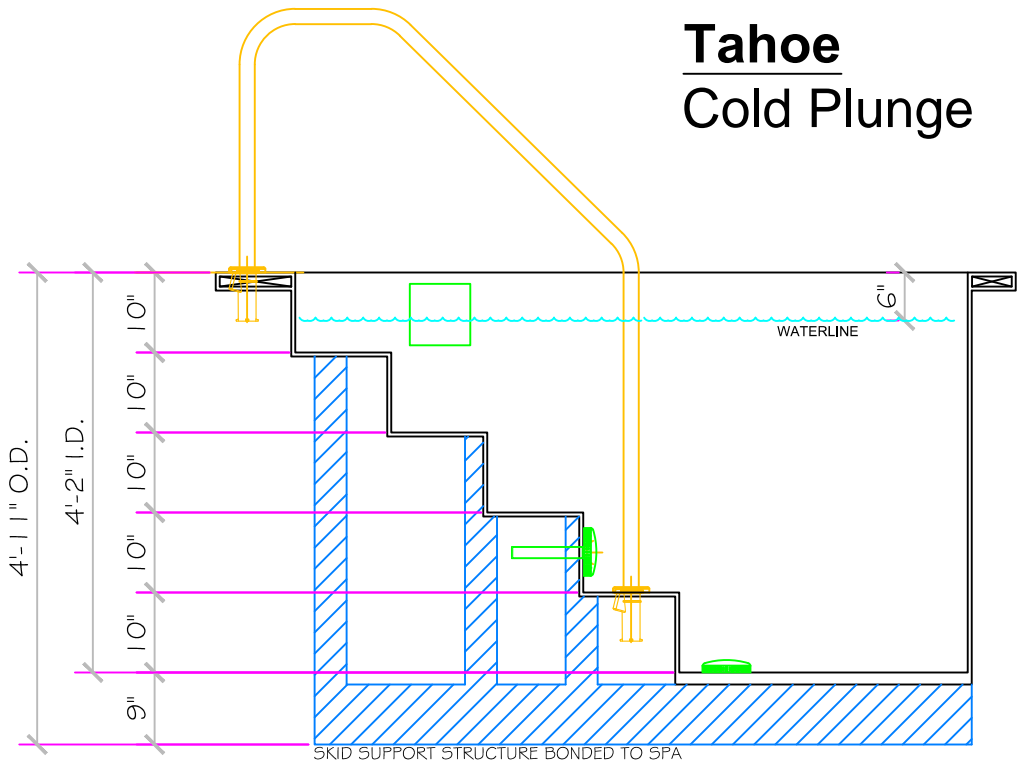
- 1) Contact manufacture when servicing tile or grout. @ (530) 534-9910

SPECIFICATIONS	
SHELL WEIGHT:	1500 LBS.
WATER WEIGHT:	3929 LBS.
TOTAL SHELL & WATER WEIGHT:	5428.7 LBS.
WATER VOLUME:	63 Cu.Ft.
WATER GALLONS:	471 GAL.
SURFACE AREA:	26.3 SQ. FT.
ICC ES LISTED #:	PMG-1161
FDA#:	2030305

SKID SUPPORT STRUCTURE* BONDED TO SPA	
	*SKIDS SUPPLIED BY NESPA
LIGHT NICHE	
	GloBrite LED Spa Light
MAIN DRAIN	
	6" Round Hockey Puck AquaStar 6HPH4xxx Sumpless Suction Outlet Floor/Wall 53.6 GPM @ 1.5 FPS - 11.4" Open Area Complies w/ ANSI Code ASME A112.19.8-2007 & VGB 2008
SKIMMER	
	HAYWARD SP-1084FVE SURFACE SKIMMER W/ EQUALIZER, NSF APPROVED
JET	
	HYDRO INLETS 1-1/2" WATER - 1-1/2" AIR HYDROAIR #10-5100 COMPLIES W/ ANSI CODE ASME A112.19.8-07 UL APPROVED
LEVEL SENSOR	
	INLET FITTINGS 1-1/2" WALL TYPE HYDROAIR #10-3500 COMPLIES W/ ANSI CODE ASME A112.19.8-07 UL APPROVED
RETURN	
	INLET FITTINGS 1-1/2" WALL TYPE W/ EYEBALL HYDROAIR #10-3500 COMPLIES W/ ANSI CODE ASME A112.19.8-07 UL APPROVED
FILL	
	INLET FITTINGS 1-1/2" WALL TYPE W/ EYEBALL HYDROAIR #10-3500 COMPLIES W/ ANSI CODE ASME A112.19.8-07 UL APPROVED



Tahoe Cold Plunge



All drawing dimensions supplied by [NESPA ENTERPRISES INC.](http://www.nespa.com) are for reference only. All CAD files were created using AutoCAD file (*.dwg) and were provided as a service to our customers using AutoCAD. Errors sometimes occur during this process and with software incompatibility upon opening a file. [NESPA ENTERPRISES INC.](http://www.nespa.com) and/or any authorized distributor of our products will not be held responsible for problems arising from files which have been converted and does not warranty the documents against deficiencies or typographical errors of any kind. We recommend that all measurements are verified with actual physical product before any custom fabrication in the field occurs.

APPROVED

ALL DIMENSIONS SUBJECT TO 1/4" TOLERANCES

NESPA ENTERPRISES INC.
2800 Richter Ave. Suite C Oroville, CA 95966
Office: (530) 534-9910 Fax: (530) 534-9915
E-Mail: jim@tiledspas.com Web Site: www.tiledspas.com



If printing as a PDF:

Page Scaling: None

SCALE
1/2" = 1'



DWG TYPE
Tahoe Plunge SD

DWG NAME
MOUNTAIN TREK

DATE
11/25/2013

SHEET
PAGE 1 OF 10

These drawings, concepts, and details contained herein are the original proprietary designs of [NESPA ENTERPRISES INC.](http://www.nespa.com), developed over many years of experience in the industry and as such are protected by the copyright laws of the United States Government. Reproduction of any of the above without written permission to do so by [NESPA ENTERPRISES INC.](http://www.nespa.com), is illegal.

1. **Field Tile:** Dal Tile Keystone: 1"x 1" Biscuit D-317
2. **Tab Bench Lip:** Dal Tile Keystone Trim: 2"x 2" Surface Bullnose, S-886 Navy Speckle D209
3. **Tab Coved Corner:** Dal Tile Keystone Trim: 2"x1" Inside Corner, C-833 Biscuit D-317
4. **Tab Lip:** Dal Tile Keystone Trim: 1"x 1" Biscuit D-317 **Edge Lip:** C701 Coping Biscuit D-317

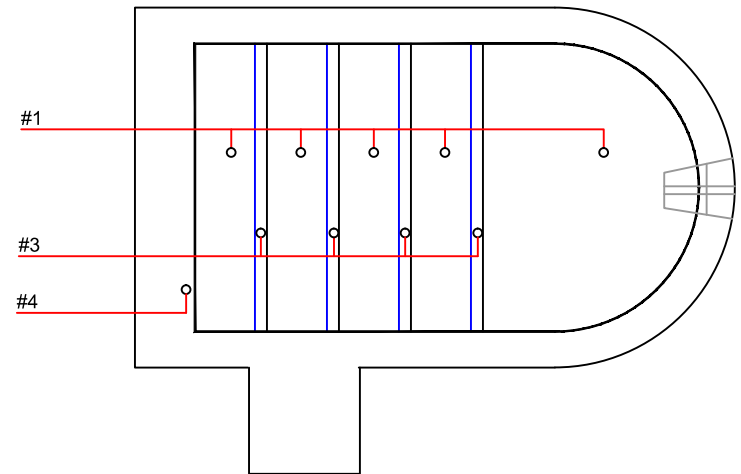
Date: _____

Approval: _____

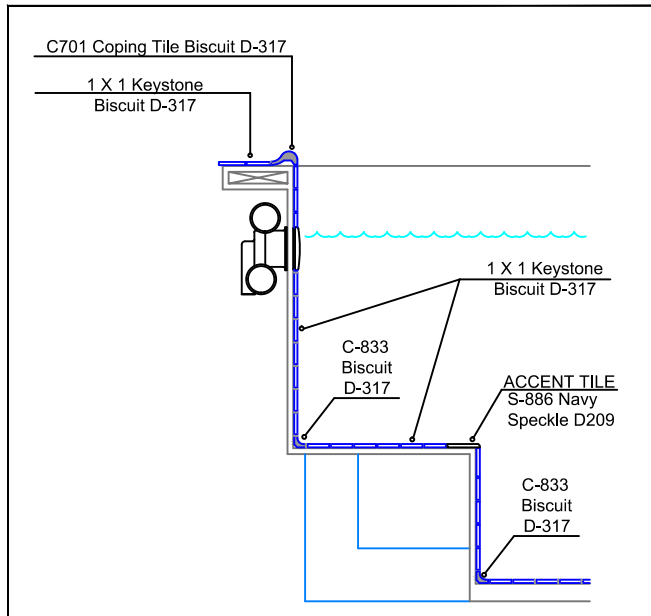
#1 - GROUT: _____

#2 - GROUT: _____

#3 - GROUT: _____



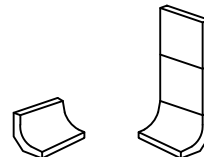
Tile Detail



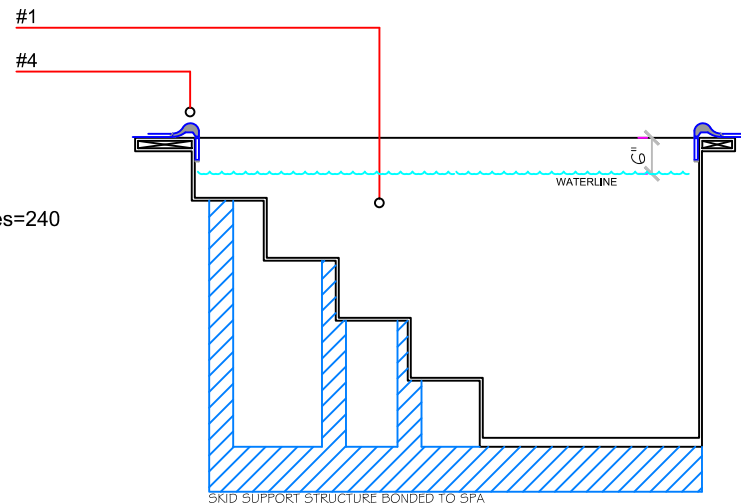
All tiles used to be Unglazed Porcelain intended for pool facilities with min. performance spec listed as below.

Dal Tile Keystone Shapes, Technical Data
<http://products.daltile.com/series.cfm?series=240>

D.C.O.F. Wet >= 0.42
 C.O.F. Wet >= 0.6
 C.O.F. Dry >= 0.7
 Moisture Absorption: < 0.5%
 Breaking Strength: >300 lbs
 MOH's N/A
 Chemical Resistance: Resistant
 Abrasion Resistance: 4 - Commercial



C-833
COVE
TILE



APPROVED

ALL DIMENSIONS SUBJECT TO 1/4" TOLERANCES

These drawings, concepts, and details contained herein are the original proprietary designs of **NESPA ENTERPRISES INC.**, developed over many years of experience in the industry and as such are protected by the copyright laws of the United States Government. Reproduction of any of the above without written permission to do so by **NESPA ENTERPRISES INC.**, is illegal.

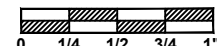
NESPA ENTERPRISES INC.
 2800 Richter Ave. Ste. C Oroville, CA 95966
 Office: (530) 534-9910 Fax: (530) 534-9915
 E-Mail: jim@tiledspas.com Web Site: www.tiledspas.com



If printing as a PDF:

Page Scaling: None

SCALE
3/8" = 1'



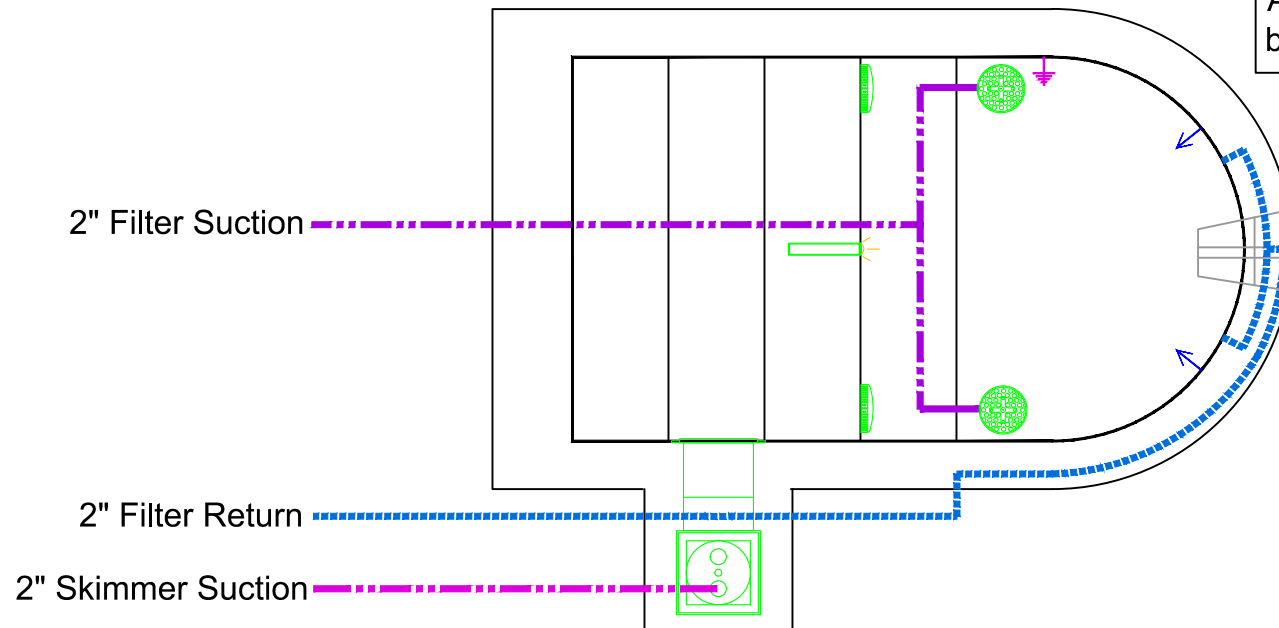
DWG TYPE
Plunge Tile

DWG NAME
MOUNTAIN TREK

DATE
11/26/2013

SHEET
PAGE 2 OF 10

NOTE:
All returns 24"
below water line



2" Filter Suction

2" Filter Return

2" Skimmer Suction

All drawing dimensions supplied by [NESPA ENTERPRISES INC.](http://www.nespa.com) are for reference only. All CAD files were created using AutoCAD file (*.dwg.) and were provided as a service to our customers using AutoCAD. Errors sometimes occur during this process and with software incompatibility upon opening a file. [NESPA ENTERPRISES INC.](http://www.nespa.com) and/or any authorized distributor of our products will not be held responsible for problems arising from files which have been converted and does not warranty the documents against deficiencies or typographical errors of any kind. We recommend that all measurements are verified with actual physical product before any custom fabrication in the field occurs. **APPROVED** ALL DIMENSIONS SUBJECT TO 1/4" TOLERANCES

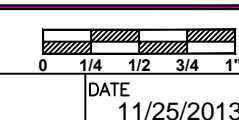
These drawings, concepts, and details contained herein are the original proprietary designs of [NESPA ENTERPRISES INC.](http://www.nespa.com), developed over many years of experience in the industry and as such are protected by the copyright laws of the United States Government. Reproduction of any of the above without written permission to do so by [NESPA ENTERPRISES INC.](http://www.nespa.com), is illegal

NESPA ENTERPRISES INC.
2800 Richter Ave. Ste. C Oroville, CA 95966
Office: (530) 534-9910 Fax: (530) 534-9915
E-Mail: jim@tiledspas.com Web Site: www.tiledspas.com



If printing as a PDF:
Page Scaling:

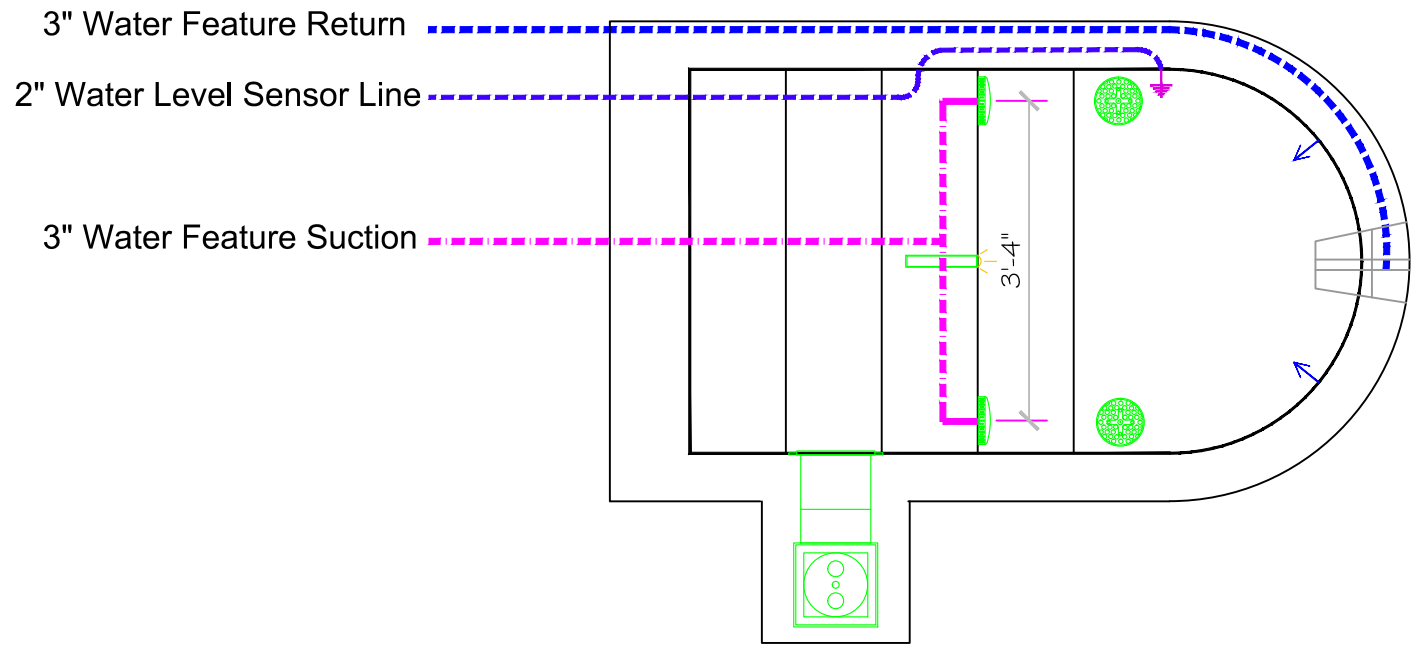
SCALE
1/2" = 1'



DWG TYPE
Plunge Plumbing
SHEET
PAGE 3 OF 10

DWG NAME
MOUNTAIN TREK

DATE
11/25/2013



All drawing dimensions supplied by [NESPA ENTERPRISES INC.](http://www.nespa.com) are for reference only. All CAD files were created using AutoCAD file (*.dwg) and were provided as a service to our customers using AutoCAD. Errors sometimes occur during this process and with software incompatibility upon opening a file. [NESPA ENTERPRISES INC.](http://www.nespa.com) and/or any authorized distributor of our products will not be held responsible for problems arising from files which have been converted and does not warranty the documents against deficiencies or typographical errors of any kind. We recommend that all measurements are verified with actual physical product before any custom fabrication in the field occurs. **APPROVED** ALL DIMENSIONS SUBJECT TO 1/4" TOLERANCES

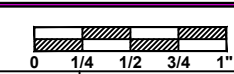
These drawings, concepts, and details contained herein are the original proprietary designs of [NESPA ENTERPRISES INC.](http://www.nespa.com), developed over many years of experience in the industry and as such are protected by the copyright laws of the United States Government. Reproduction of any of the above without written permission to do so by [NESPA ENTERPRISES INC.](http://www.nespa.com), is illegal.

NESPA ENTERPRISES INC.
 2800 Richter Ave. Ste. C Oroville, CA 95966
 Office: (530) 534-9910 Fax: (530) 534-9915
 E-Mail: jim@tiledspas.com Web Site: www.tiledspas.com



If printing as a PDF:
 Page Scaling:

SCALE
 1/2" = 1'



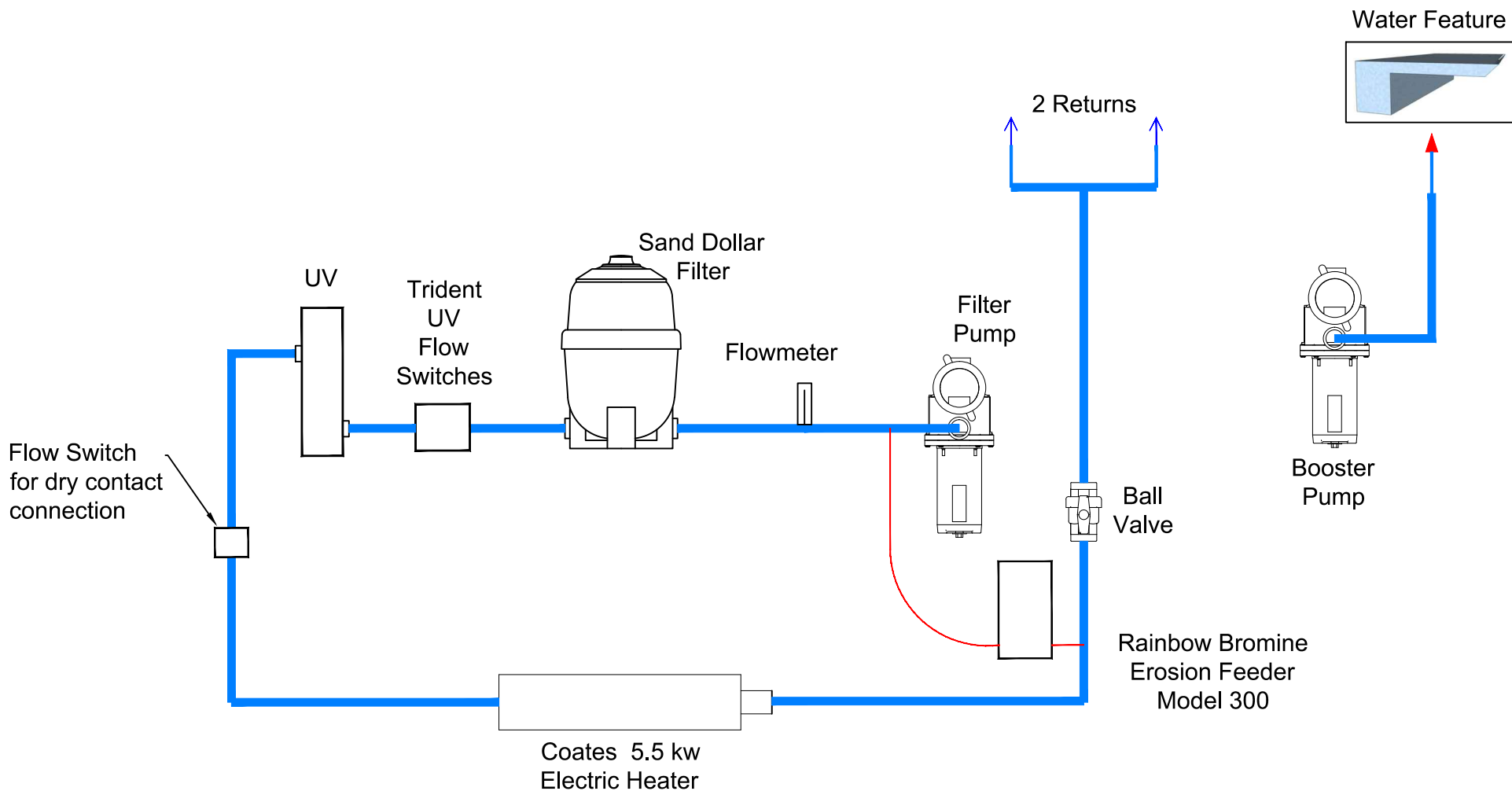
DWG TYPE
 Plunge Plumbing (2)

DWG NAME
 MOUNTAIN TREK

DATE
 11/25/2013

SHEET
 PAGE 4 OF 10

PLUNGE PLUMBING SCHEMATIC



APPROVED

ALL DIMENSIONS SUBJECT TO 1/4" TOLERANCES

These drawings, concepts, and details contained herein are the original proprietary designs of **NESPA ENTERPRISES INC.**, developed over many years of experience in the industry and as such are protected by the copyright laws of the United States Government. Reproduction of any of the above without written permission to do so by **NESPA ENTERPRISES INC.**, is illegal.

NESPA ENTERPRISES INC.
 2800 Richter Ave. Ste. C Oroville, CA 95966
 Office: (530) 534-9910 Fax: (530) 534-9915
 E-Mail: jim@tiledspas.com Web Site: www.tiledspas.com



If printing as a PDF:
 Page Scaling:

DWG NAME: MOUNTAIN TREK

SCALE: N/A

DATE: 11/25/2013

DWG TYPE: Plunge Plumbing (3)

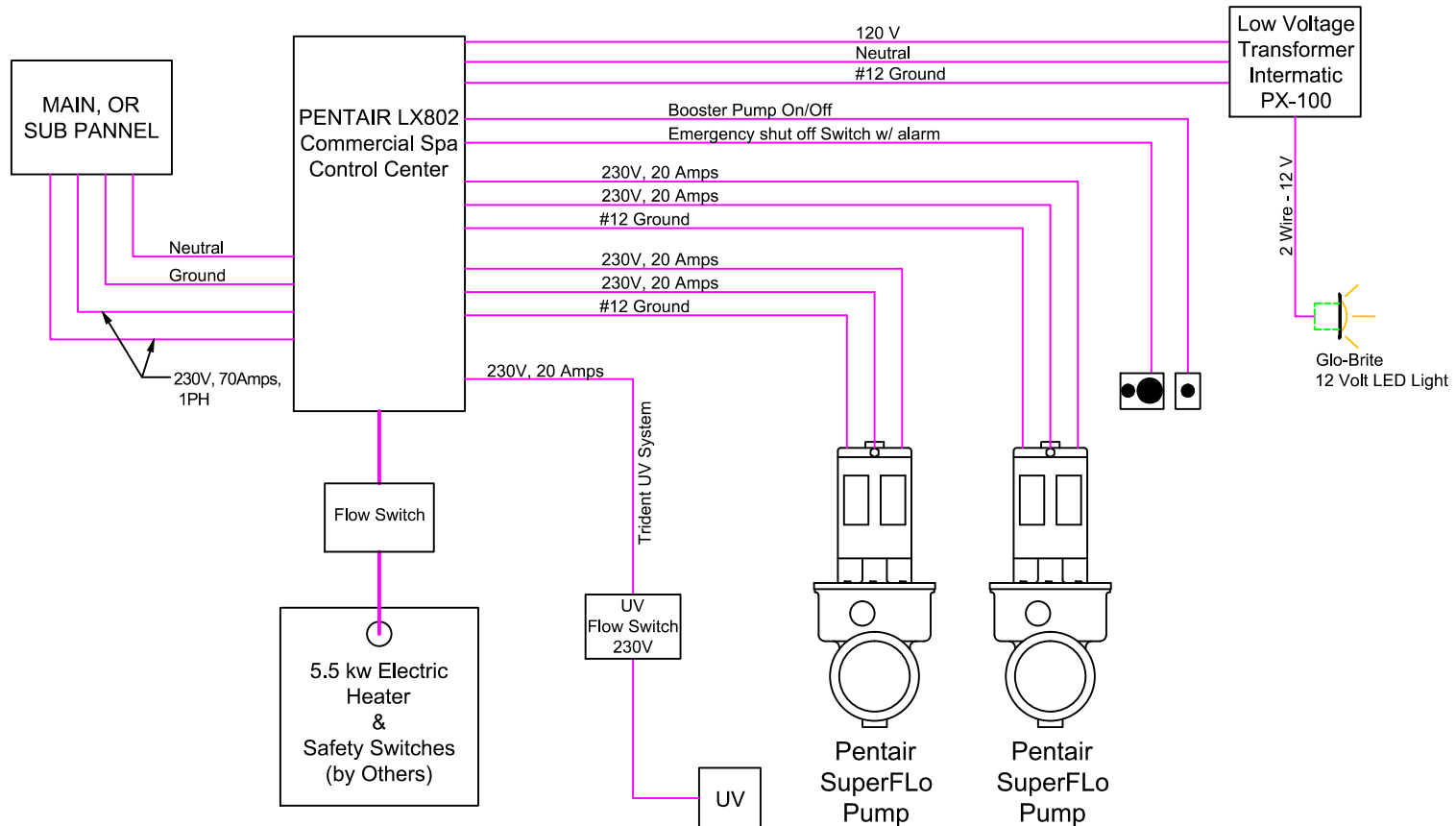
SHEET: PAGE 5 OF 10

0 1/4 1/2 3/4 1"

Plunge Electrical Schematic

2 PUMP - Electric Heater - Low Voltage Light

NOTE:
THIS SCHEMATIC IS FOR CONCEPTUAL PURPOSES ONLY.
ALL WORK SHALL BE PERFORMED BY A LICENSED
ELECTRICIAN AND COMPLY WITH THE NATIONAL
ELECTRICAL CODE.



APPROVED

ALL DIMENSIONS SUBJECT TO 1/4" TOLERANCES

These drawings, concepts, and details contained herein are the original proprietary designs of **NESPA ENTERPRISES INC.**, developed over many years of experience in the industry and as such are protected by the copyright laws of the United States Government. Reproduction of any of the above without written permission to do so by **NESPA ENTERPRISES INC.**, is illegal.

NESPA ENTERPRISES INC.
2800 Richter Ave. Ste. C Oroville, CA 95966
Office: (530) 534-9910 Fax: (530) 534-9915
E-Mail: jim@tiledspas.com Web Site: www.tiledspas.com



If printing as a PDF:

Page Scaling: None

SCALE

N/A



DWG TYPE

Plunge Electrical

DWG NAME

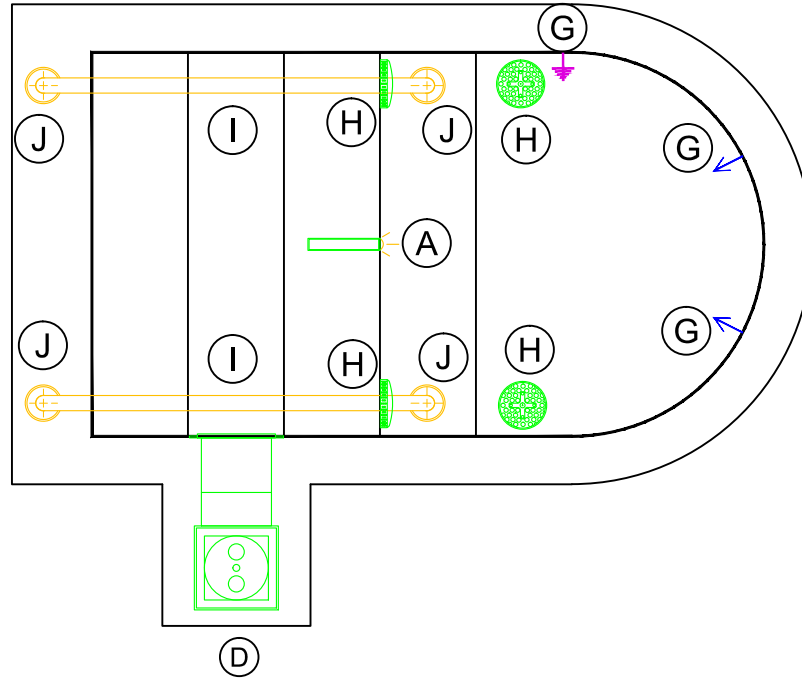
MOUNTAIN TREK

DATE

11/25/2013

SHEET

PAGE 6 OF 10



ITEM	DESCRIPTION	MANUFACTURER	CATALOG NO.	QTY.
A	Glo Brite LED Spa Light	PENTAIR	782423	1
D	SURFACE SKIMMER W/ EQUALIZER, NSF APPROVED	HAYWARD	SP-1084 FVE	1
G	INLET FITTINGS, 1 1/2", WALL TYPE, W/ EYEBALL	HYDROAIR	10-3500	4
H	6" Round Hockey Puck <i>AquaStar 6HPHAxxx Sumpless Suction Outlet</i> Floor/Wall 53.6 GPM @ 1.5 FPS - 11.4" Open Area Complies w/ ANSI Code ASME A112.19.8-2007 & VGB 2008	AQUASTAR	6HPHAxxx	4
I	SR Smith ADA 3 Bend Handrail W/ .065 TUBING WALL THICKNESS	S.R. SMITH	3HR-4ADA 4' ADA	2
J	Perma Cast CUP ANCHOR (6" X 1-1/2")	Perma Cast	PS-6019-BC	4

APPROVED

ALL DIMENSIONS SUBJECT TO 1/4" TOLERANCES

DWG TYPE
Plunge EQ

SHEET
PAGE 7 OF 10

These drawings, concepts, and details contained herein are the original proprietary designs of **NESPA ENTERPRISES INC.**, developed over many years of experience in the industry and as such are protected by the copyright laws of the United States Government. Reproduction of any of the above without written permission to do so by **NESPA ENTERPRISES INC.**, is illegal.

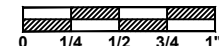
NESPA ENTERPRISES INC.
2800 Richter Ave. Ste. C Oroville, CA 95966
Office: (530) 534-9910 Fax: (530) 534-9915
E-Mail: jim@tiledspas.com Web Site: www.tiledspas.com



If printing as a PDF:

Page Scaling:

SCALE
1/2" = 1'



DWG NAME
MOUNTAIN TREK

DATE
11/25/2013

THE BEST AND
BRIGHTEST...



When you install Halo™ Halo LED Lighting in a pool/spa, possible rooftop or in-ground applications, Halo LED lights are the ultimate, cost-effective way to illuminate and enhance pool features like high ceilings, steps, bench seating and other outdoor water features.

Halo LED offers the industry's most advanced technology for bright, energy-efficient lighting—while using less energy than comparable outdoor water lights.

Don't settle for an ordinary outdoor lighting experience. Let Halo LED Lighting illuminate your outdoor water features, and make your evening routine and landscape maintenance more beautiful and safer.

PRODUCT FEATURES:

- The brightest and most efficient LED light available.
- 4.5 footed feet reduce 75% energy use—programmable light shows.
- The perfect complement to Halo™ Halo™ Color-changing LED Pool Lighting for outdoor applications.
- UL Listed.

THE SIMPLICITY OF COMPATIBILITY

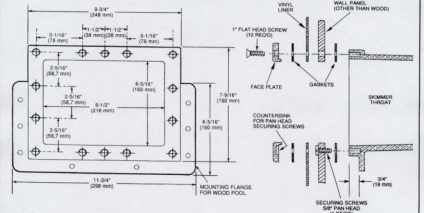
The Halo LED light is more than a standard outdoor lighting LED light. It is fully compatible with our Halo™ Halo™ LED pool lights. When used with our optional Halo™ Halo™ Halo™ LED light, Halo™ Halo™ LED light will automatically adjust its light output to match the color of the pool lighting.

For the ultimate in convenience and control, consider an IntelliBreed™ or IntelliBreed™ Automation System. You can program and control light shows from home or on the go with our many options, including an in-home central panel, mobile devices, and the IntelliBreed™ Inter-Net for your IntelliBreed™ or IntelliBreed™ mobile digital device.



D

INSTALLATION INSTRUCTIONS



CUT OUT PANELS: A - HEIGHT MAX. 8 1/2" (215mm MAX. #1 (20mm) ONLY, OR FINISH 1 1/2" (38mm) AS SHOWN. B - WIDTH MAX. 20" (508mm MAX. #1 (20mm) ONLY, OR FINISH 1 1/2" (38mm) AS SHOWN. THREE FOR THREE SCREWS, TWO FOR SECURING SCREWS.

- INSTRUCTIONS FOR OTHER THAN WOOD PANEL**
1. Drill and cut out wall panel section per dimensions.
 2. Place gasket on skimmer face, making sure holes in gasket align with holes in skimmer face. (A very light application of adhesive cement will assist in holding gasket in place.)
 3. Align skimmer face and gasket with drilled panel holes and fasten to wall panel at top center and bottom center with the two top head securing screws.
 4. If vinyl liner pool, install liner before proceeding with Step 5.
 5. Align second gasket and face plate and fasten tightly to panel liner through face plate holes one at a time prior to Gasket 3. Tighten. 4. Wall Panel 5. Gasket 6. Inlet Skimmer Face.
 6. If vinyl liner pool, cut out liner along inside edges of face plate.
- INSTRUCTIONS FOR WOOD PANEL WITH VINYL LINER**
1. Cut out wall panel approximately 1/8" larger than outside dimensions of skimmer face (NOT face plate).
 2. Insert skimmer into panel out of the rear, and bit the mounting flange against the rear of the panel. Use "U" bolts, if necessary, to make face of skimmer flush with inside of the pool. Fasten the skimmer to the rear of the wood panel by ensuring the proper length round head brass wood screws through the mounting flange holes.
 3. Place gasket on skimmer face, making sure holes in gasket align with holes in skimmer face. (A very light application of adhesive cement will assist in holding gasket in place.)
 4. Install vinyl liner.
 5. Align second gasket and face plate and fasten tightly to skimmer face with header (52) 7" screws. Place liner through face plate holes one at a time prior to inserting screws.
 6. Cut out vinyl liner along inside edges of face plate.

LOCATION OF SKIMMERS

To obtain the most effective skimming action over the entire pool surface, locate the skimmers relative to the pump suction outlet where 1-1/2" piping is desired. A 2" pipe slug is furnished for closing off the main circulation pattern. The use of directional outlet fittings will ensure the proper circulation pattern.

D

**HAYWARD MODEL SP1084 AUTO-SKIM
AUTOMATIC SURFACE SKIMMER
INSTALLATION AND OPERATING INSTRUCTIONS**

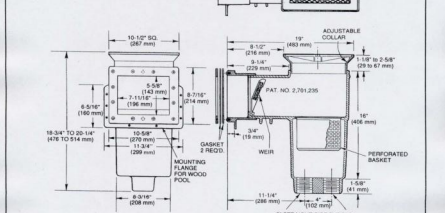
The Auto-Skim is a rugged, versatile automatic skimmer for residential or commercial installations. The illustrations below show the standard SP1084 (#1), the SP1082V Skimmer-Main Drain Valve Assembly installed (#2), and the SP1084 with SP1078 Equalizer Valve and SP1082V Float Valve Assembly (#3). Consult inside pages for specific installation details and dimensions.

- 1. BASIC UNIT**
- A. FLOW ADJUSTMENT—For full flow, move Flo-Control Slide Plate to full open. To adjust flow, move Slide Plate to desired position over pump outlet.
- B. TO VACUUM—Remove cover and basket. Screw hose adapter into pump outlet. Fill vacuum hose with water and insert over hose adapter. Or use optional Skim-Vac over basket vacuum plate.
- 2. SKIMMER WITH MAIN DRAIN CONNECTION**
- A. FULL SKIM—Place Valve Lever in straight-up position. Close Slide Plate.
- B. FULL MAIN DRAIN (SWEEP)—Place Valve Lever down. Close Slide Plate.
- C. 1/2 SKIM - 1/2 MAIN DRAIN—Place Valve Lever at 45° (Half-down). Open Slide Plate 1/2.
- D. TO VACUUM—Remove cover and basket. Place Valve Lever straight up. Fill vacuum hose with water, and insert into opening in Valve Chamber. Or use optional Skim-Vac over basket vacuum plate.
- 3. SP1084V-SKIMMER WITH EQUALIZER VALVE AND FLOAT VALVE ASSEMBLY**
- A. EQUALIZER—Model SP1078 Equalizer Check Valve Assembly installs over front port, and is used in conjunction with the SP1082V Float Valve Assembly. If water level drops below skimmer opening, or if skimmer flow is obstructed, the float will automatically stop and the equalizer valve will open. This diverts all flow to the pump from the equalizer line and prevents a lock-in the pump. When the pump is shut off, and the water level continues to drop, the float will rise and the equalizer valve will close, allowing normal skimming operation when the pump is restarted.
- B. TO VACUUM—Select one convenient skimmer and remove cover, basket and float valve assembly. Screw hose adapter into pump outlet. Fill vacuum hose with water and insert over hose adapter. Throttle down flow from other skimmers until desired suction is obtained through vacuum.

NOTE: When two or more skimmers are plumbed into a common suction line, the flow is balanced through the skimmers by adjusting the Flo-Control Slide Plate at each unit.

D

SP1084 AUTO-SKIM DIMENSIONS



INSTALLATION INSTRUCTIONS

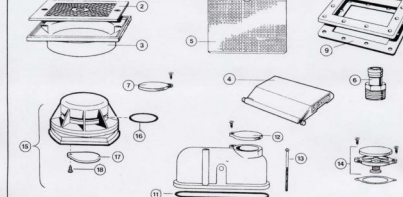
- EQUALIZER VALVE ASSEMBLY SP1078**
1. Place gasket over equalizer line.
 2. Place Equalizer Assembly over equalizer port, with side up.
 3. Insert retaining screws thru ear flange and gasket and tighten retaining screws.
- SKIMMER MAIN DRAIN VALVE ASSEMBLY SP1082V**
1. Remove screws, spacer ring (if installed) and original slide plate from bottom of SP1082 skimmer.
 2. Insert 1" Ring in SP1082V Valve Housing and place in bottom of skimmer. Push "U" Bolt MAIN DRAIN line port through Port "B" over PUMP PORT (rear connection).
 3. Insert front Retaining Screw, with washer, into Valve Housing and screw down tightly into skimmer body.
 4. Insert rear Retaining Screw, with washer, into Valve Housing. Screw down firmly into insert in skimmer body. Tighten front retaining screw.
- SKIMMER MAIN DRAIN BY-PASS ASSEMBLY SP1082V**
1. Remove cover, spacer ring (if installed) and Flo-Control Slide Plate (if installed) from bottom of basic skimmer.
 2. Attach Flo-Control Trimmer Plate to float assembly using screws provided.
 3. Place Float Valve Assembly, with O-ring into skimmer. Adjust Flo-Control Trimmer Plate as required.

D

D

F

PARTS AND ACCESSORIES



KEY	PART NUMBER	DESCRIPTION	NO. REQ'D.
1	SPX1082E1	Cover Retaining Screw	2
2	SPX1082E	Cover	1
3	SPX1082V	Adjusting Collar	1
4	SPX1082C	Water Assembly	1
5	SPX1082CA	Basket	1
6	SPX1082C3	Vacuum Adapter	1
7	SPX1082H1A	Flo-Control Slide Plate w/Screw	1
8	SPX1082	Face Plate	1
9	SPX1084B	Gasket	2
10a	SPX1084CLA	Screw (Short)	12
10b	SPX1084CLM	Screw (Long)	12
PARTS AND ACCESSORIES			
11	SPX1082B8	O-Ring	1
12	SPX1082H1A	Flo-Control Slide Plate w/Screw	1
13	SPX1082E2	Retaining Screw	2
14	SP1078	Equalizer Valve Assembly	1
15	SP1082V	Float Valve Assembly	1
16	SPX1072P	Float Valve O-Ring	1
17	SPX1072PA	Flo-Control Plate	1
18	SPX1072B	Retaining Screw	1

REPAIR PARTS ARE AVAILABLE THROUGH YOUR LOCAL AUTHORIZED HAYWARD DISTRIBUTOR

HAYWARD POOL PRODUCTS, INC.
 Hayward Pool Products, Inc. 800 Fairmount Avenue, Hayward, CA 94541
 Hayward Pool Products, Inc. 2015 Peninsula Boulevard, Peninsula, CA 94075
 Hayward Pool Products, Inc. 2865 Peninsula Drive, Danville, CA 94504
 Hayward Pool Products, Inc. 3932 St. Quentin in Yuba City, CA 95991
 ©2000 Hayward Printed in U.S.A.

IT Industries Registered Quality System POOL/SPA Products Hydro Jet™ Series Jet Assemblies

Specifications:
 Outlet: 1 1/2" (38mm) or 2" (51mm) NPT
 Hole Size: Use 2 3/8" hole size
 Options: Hard Hat 16-5303

Hydro Jet™ 1 1/4" Fitting Thread Length

Hydro Jet™ 2 1/2" Fitting Thread Length

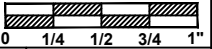
Hydro Jet™ For 1 1/2" PVC Pipe Extension

Hydro Jet™ Extension - For Gunite / Hot Map

Page D-3

APPROVED

ALL DIMENSIONS SUBJECT TO 1/4" TOLERANCES



DWG TYPE
Plunge EQ Docs

DATE
11/25/2013

SHEET
PAGE 8 OF 10

These drawings, concepts, and details contained herein are the original proprietary designs of **NESPA ENTERPRISES INC.**, developed over many years of experience in the industry and as such are protected by the copyright laws of the United States Government. Reproduction of any of the above without written permission to do so by **NESPA ENTERPRISES INC.**, is illegal.

NESPA ENTERPRISES INC.
 2800 Richter Ave. Ste. C Oroville, CA 95966
 Office: (530) 534-9910 Fax: (530) 534-9915
 E-Mail: jim@tiledspas.com Web Site: www.tiledspas.com



If printing as a PDF:
 Page Scaling: None

SCALE
N/A

DWG NAME
MOUNTAIN TREK

DATE
11/25/2013

SHEET
PAGE 8 OF 10

- 1. Field Tile:** Dal Tile Keystone: 1"x 1" Biscuit D-317
- 2. Tub Bench Lip:** Dal Tile Keystone Trim: 2"x 2" Surface Bullnose, S-886 Navy Speckle D209
- 3. Tub Covered Corner:** Dal Tile Keystone Trim: 2"x1" Inside Corner, C-833 Biscuit D-317
- 4. Tub Lip:** Dal Tile Keystone Trim: 1"x 1" Biscuit D-317 **Edge Lip:** C701 Coping Biscuit D-317

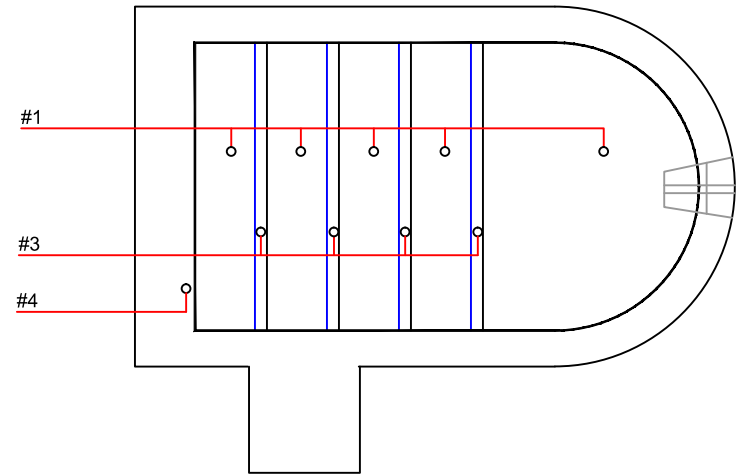
Date: _____

Approval: _____

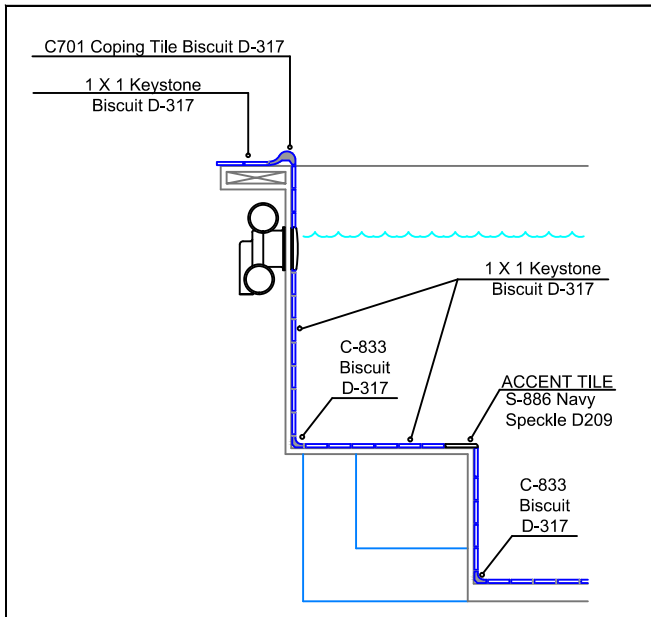
#1 - GROUT: _____

#2 - GROUT: _____

#3 - GROUT: _____



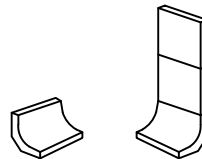
Tile Detail



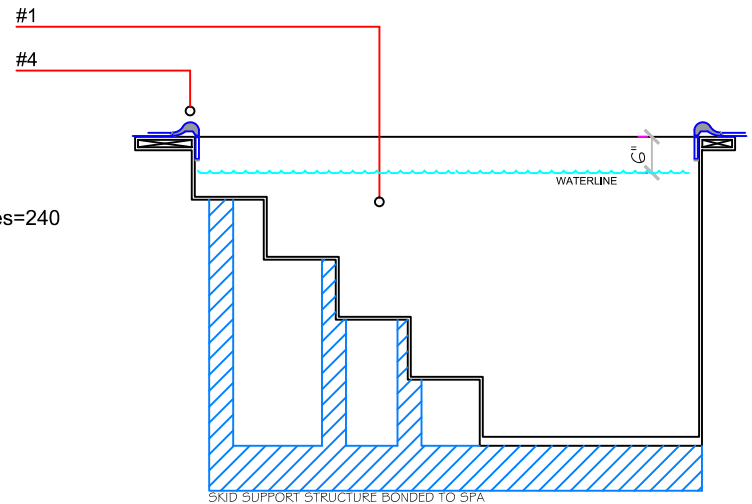
All tiles used to be Unglazed Porcelain intended for pool facilities with min. performance spec listed as below.

Dal Tile Keystone Shapes, Technical Data
<http://products.daltile.com/series.cfm?series=240>

D.C.O.F. Wet >= 0.42
 C.O.F. Wet >= 0.6
 C.O.F. Dry >= 0.7
 Moisture Absorption: < 0.5%
 Breaking Strength: >300 lbs
 MOH's N/A
 Chemical Resistance: Resistant
 Abrasion Resistance: 4 - Commercial



C-833
COVE
TILE



APPROVED

ALL DIMENSIONS SUBJECT TO 1/4" TOLERANCES

These drawings, concepts, and details contained herein are the original proprietary designs of **NESPA ENTERPRISES INC.**, developed over many years of experience in the industry and as such are protected by the copyright laws of the United States Government. Reproduction of any of the above without written permission to do so by **NESPA ENTERPRISES INC.**, is illegal.

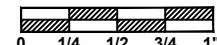
NESPA ENTERPRISES INC.
 2800 Richter Ave. Ste. C Oroville, CA 95966
 Office: (530) 534-9910 Fax: (530) 534-9915
 E-Mail: jim@tiledspas.com Web Site: www.tiledspas.com



If printing as a PDF:

Page Scaling:

SCALE
3/8" = 1'



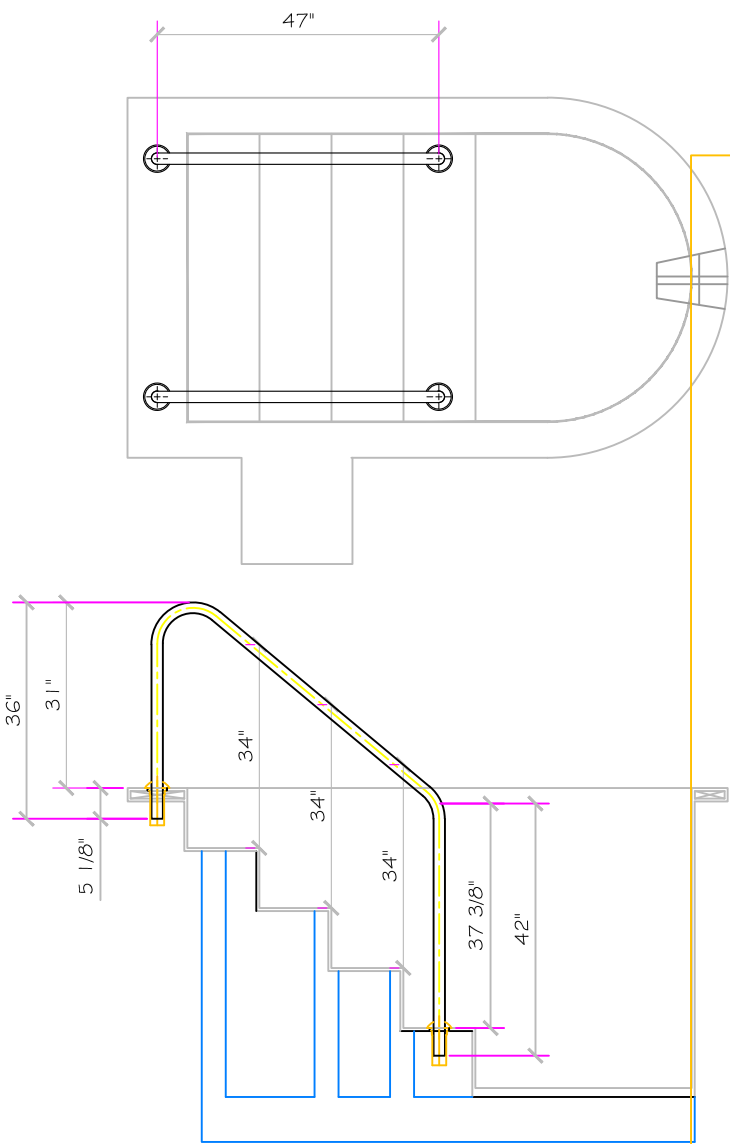
DWG TYPE
Plunge Tile (2)

DWG NAME

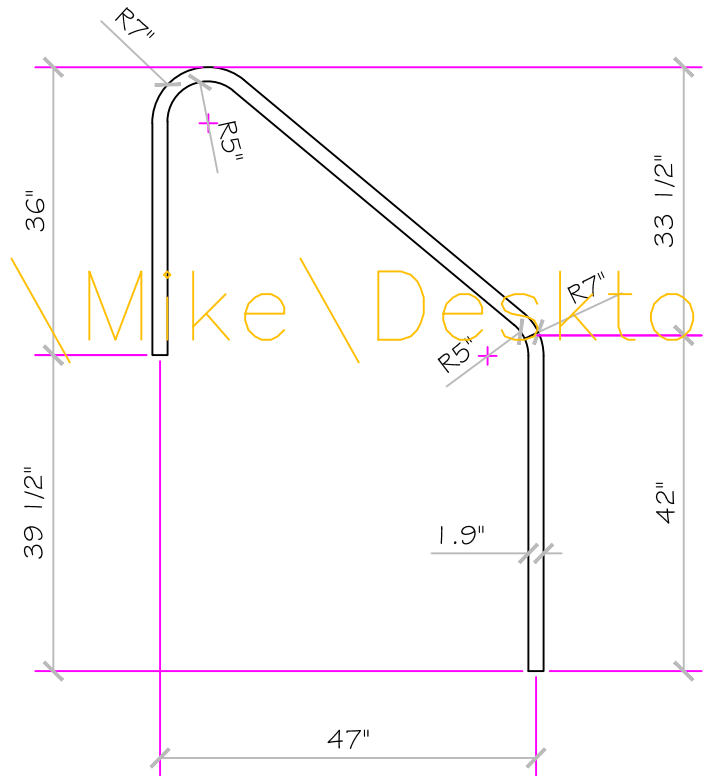
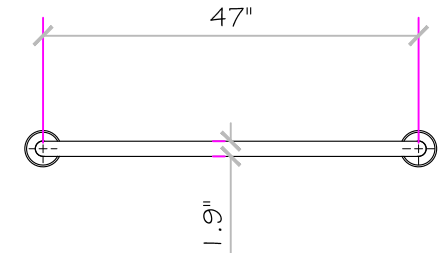
MOUNTAIN TREK

DATE
11/26/2013

SHEET
PAGE 2 OF 10



SCALE
3/8" = 1'



SCALE
1/2" = 1'

C:\Users\Mike\Desktop\

C:

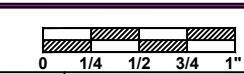
These drawings, concepts, and details contained herein are the original proprietary designs of **NESPA ENTERPRISES INC.**, developed over many years of experience in the industry and as such are protected by the copyright laws of the United States Government. Reproduction of any of the above without written permission to do so by **NESPA ENTERPRISES INC.**, is illegal.

NESPA ENTERPRISES INC.
2800 Richter Ave. Ste. C Oroville, CA 95966
Office: (530) 534-9910 Fax: (530) 534-9915
E-Mail: jim@tiledspas.com Web Site: www.tiledspas.com



If printing as a PDF:
Page Scaling: None

SCALE
As Noted



DWG TYPE
Plunge Handrail

DWG NAME
MOUNTAIN TREK

DATE
1/31/2014

SHEET
PAGE 1 OF 1

ArcFall/RAINARC INSTALLATION: GUNITE APPLICATION

READ ENTIRE INSTRUCTIONS FIRST!

The following instructions will help you make a trouble free installation of the Custom Cascades ArcFall or RainArc. Installation must be made according to manufactures recommendations for warranty to be valid. If you need assistance during installation you may call Oreg at 800.420.3255

Before you begin, KNOW the appropriate CPM requirements for your specific water feature. Calculate in head loss, pump sizing and plumbing to meet these requirements. Remember more water, valved is better than not enough.

STEP 1. NOTCHING THE BOND BEAM

- Select the desired location for installation. Bend steel reinforcement to allow for installation of the ArcFall/RainArc manifold.
- Notch the bond beam or wall low enough to allow the face of the ArcFall/RainArc (the front opening) to finish 1/2" more than the entire overhang of the coping. For example, if coping material cantilevers out 2" the ArcFall/RainArc needs to be 2 1/2" below the bottom of the coping.
- Leave enough room at face of ArcFall/RainArc for any finishing materials, plus an extended 1/4" at top of ArcFall/RainArc opening.

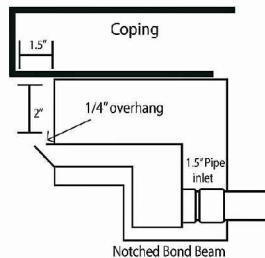
STEP 2. PLUMBING

Plumbing line must be blown clean of debris BEFORE attaching water feature. Water supply to manifold MUST be filtered between pump and water feature.

- Connect a length of standard one and one half inch (1 1/2") schedule 40 PVC piping approximately twelve (12") inches long (to extend in back of pool wall) and glue into PVC male adapter on the back of the waterfall manifold.
- Plumbing multiple units: Plumbing two or more units together is done using a two-way valve for each waterfall unit to be installed. The use of multiple valves allows the flow rate to be balanced for each unit. Valves should be positioned near the C. FREEZE PROTECTION can be achieved by plumbing the unit so water drains easily from the system. For winterizing, blow lines and follow normal procedure.

STEP 3. SETTING ARCFALL/RAINARC MANIFOLD

- Set manifold in place with mortar, **MORTAR BACK AND BOTTOM ONLY IMPORTANT:** Adjust front of lip to desired position of finished wall inside pool. Be sure to leave adequate overhang to accommodate 1/4" overhang beyond finished wall.
- Level ArcFall/RainArc manifold.
- To help secure the waterfall in position until concrete is dry, cover finished setting with one half (1/2") inch or three quarters (3/4") inch plywood. Place bricks or a cinder block on top of the plywood to distribute weight evenly over the waterfall manifold and the bond beam.



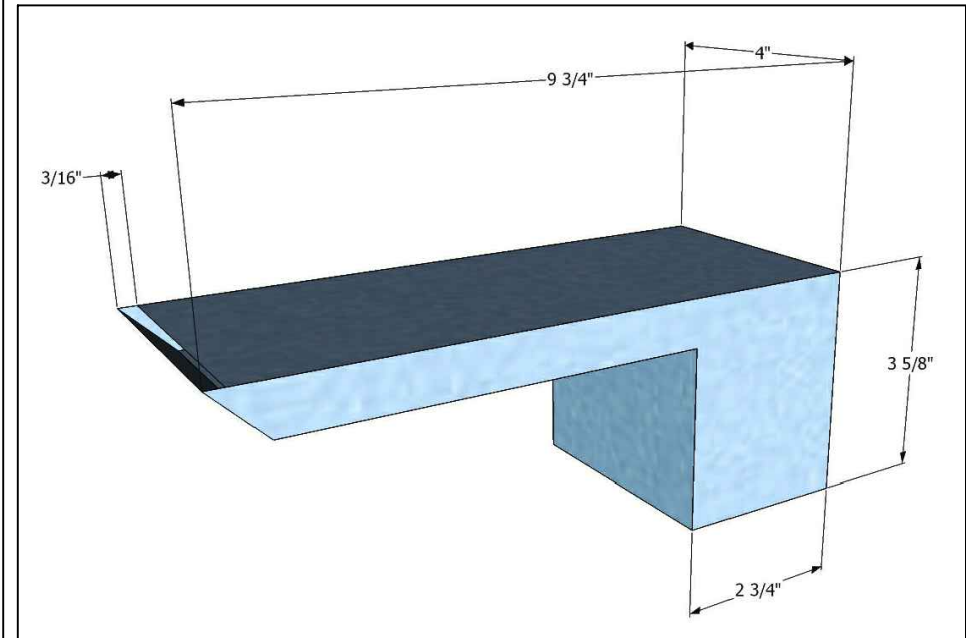
STEP 4. FINISHING

- Remove protective plywood cover and install mortar, coping (brick, etc). Take caution to keep all concrete away from ArcFall lip area. Be sure the finished wall surface is 1/4" behind waterfall lip edge.
- Once concrete has cured you may remove the masking tape from the ArcFall lip. After start up, you may use a credit card or similar item to clean debris that may have fallen into ArcFall lip. Gently slide card along the opening while the Arc Fall is running. Do not use sharp objects such as hacksaw blade, knife etc. Sharp objects may cause damage to the lip and or support ribs inside the unit and affect the ArcFalls performance. Gently pull any debris in the lip opening area out.
- Adjust the valve(s) for desired effect. When more than one ArcFall has been installed, adjust each valve until proper effect and balance are accomplished.

WARRANTY:

It is Oreg policy to replace or credit our customer for defective parts returned due to workmanship or material failure during the first year of sale. Prior factory approval is required for returns, along with original receipt. Failure to follow manufacture recommended instructions for installation and or care voids all warranty. Oreg Corporation is not responsible for cost of removal of product, or installation of replacement unit. Oreg is not responsible for shipping to or from facility, or damage done by shipper.

Stainless steel units are made with the highest grade of metal available. To keep debris from settling on the lip area, the waterfalls should be wiped down with a clean cloth periodically. When minerals or chemicals settle on the unit over a period of time, surface rust may develop. If this occurs, a scotch brite pad can be used to rub it off. It is important to use long, single strokes, parallel to the lip. This process may dull a stainless steel brushed finish, leaving a pewter type look. It will not compromise the quality of the metal. Your waterfall is designed with little to no maintenance in mind. It is our hope that you enjoy the soothing sounds and find its shimmering water playful and inviting. We sincerely hope your water feature brings you and your family refreshing fun and beauty for your pool. Our family has been in the swimming pool industry for over 40 years. It is our experience and attention to detail that creates the finest quality products for your swimming pool.



APPROVED

ALL DIMENSIONS SUBJECT TO 1/4" TOLERANCES

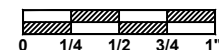
These drawings, concepts, and details contained herein are the original proprietary designs of **NESPA ENTERPRISES INC.**, developed over many years of experience in the industry and as such are protected by the copyright laws of the United States Government. Reproduction of any of the above without written permission to do so by **NESPA ENTERPRISES INC.**, is illegal

NESPA ENTERPRISES INC.
2800 Richter Ave. Ste. C Oroville, CA 95966
Office: (530) 534-9910 Fax: (530) 534-9915
E-Mail: jim@tiledspas.com Web Site: www.tiledspas.com



If printing as a PDF:
Page Scaling:

SCALE
N/A

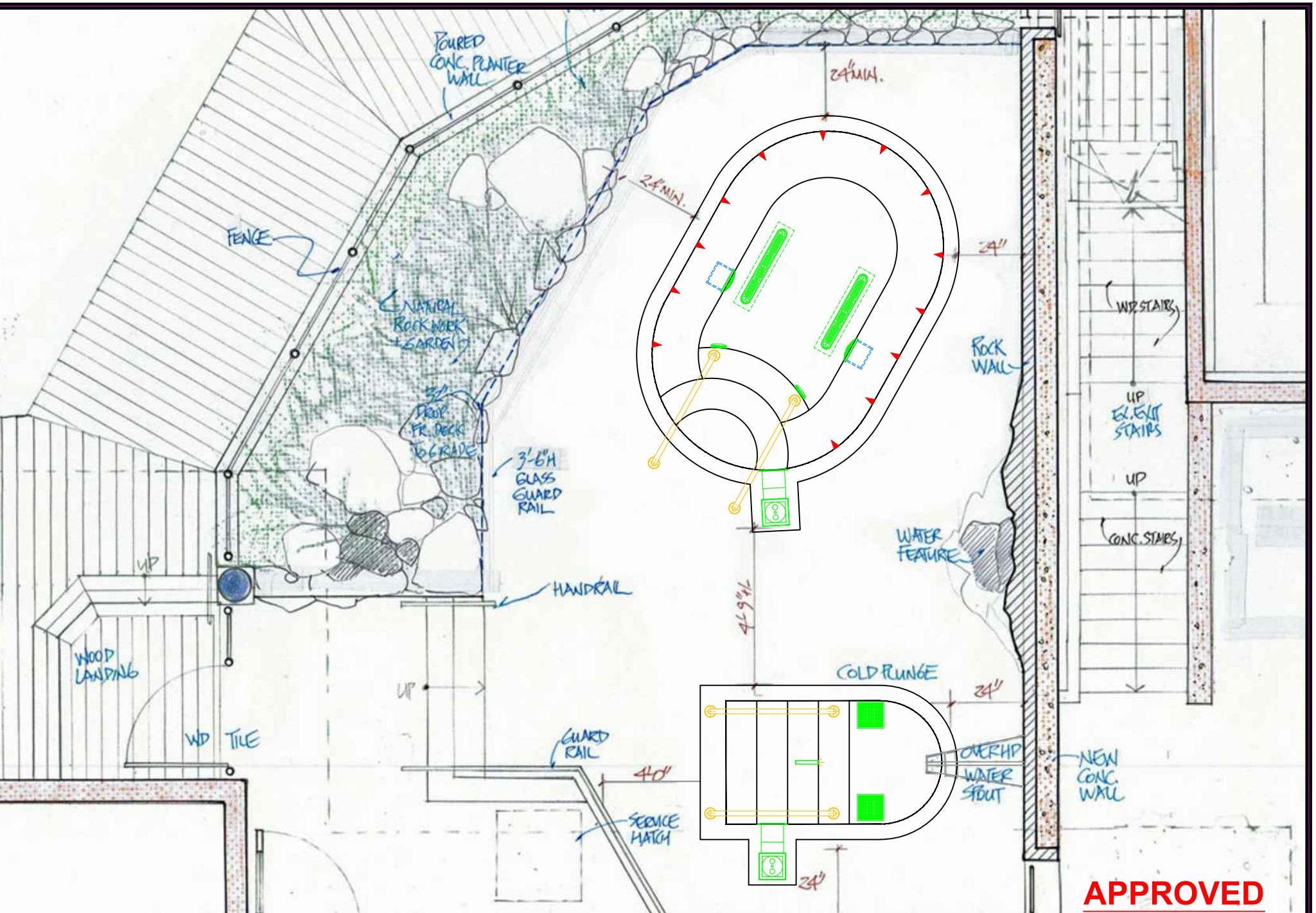


DWG TYPE
Water Feature

DWG NAME
MOUNTAIN TREK

DATE
11/25/2013

SHEET
PAGE 10 OF 10



APPROVED

ALL DIMENSIONS SUBJECT TO 1/4" TOLERANCES

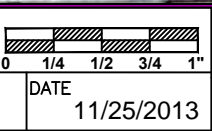
These drawings, concepts, and details contained herein are the original proprietary designs of **NESPA ENTERPRISES INC.**, developed over many years of experience in the industry and as such are protected by the copyright laws of the United States Government. Reproduction of any of the above without written permission to do so by **NESPA ENTERPRISES INC.**, is illegal.

NESPA ENTERPRISES INC.
 2800 Richter Ave. Ste. C Oroville, CA 95966
 Office: (530) 534-9910 Fax: (530) 534-9915
 E-Mail: jim@tiledspas.com Web Site: www.tiledspas.com



If printing as a PDF:
 Page Scaling:

SCALE
 1/4" = 1'



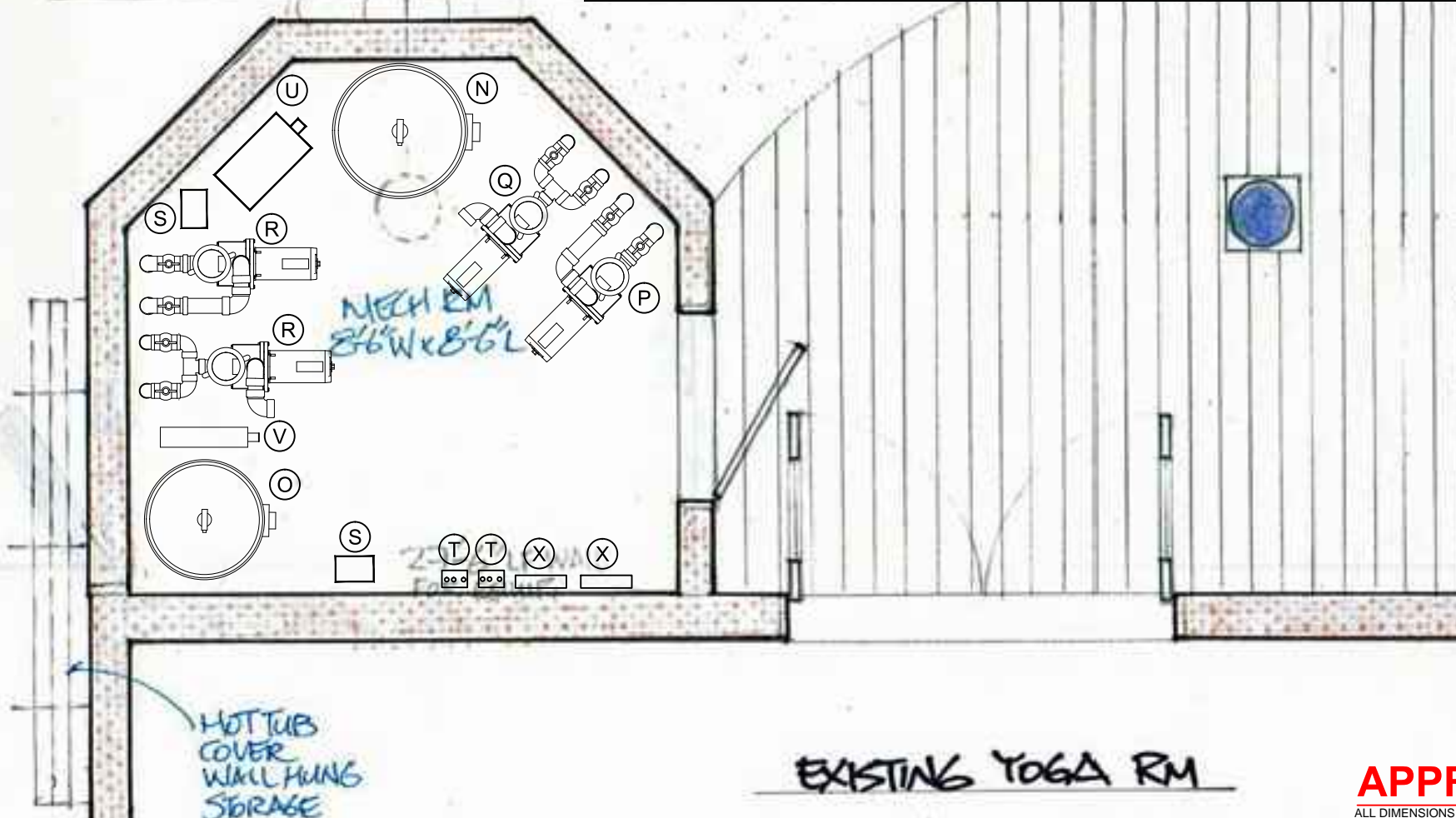
DWG TYPE
 Layout

SHEET
 PAGE 1 OF 8

DWG NAME
 MOUNTAIN TREK

DATE
 11/25/2013

ITEM	DESCRIPTION	MANUFACTURER	CATALOG NO.	QTY.
N	Sand Dollar Filter	Pentair	145300	1
O	Sand Dollar Filter	Pentair	145241	1
P	Whisperflow - 3hp - 120 gpm	Pentair	WFE-12	1
Q	SuperFlo Pump - 3/4 hp - 55 gpm	Pentair		1
R	SuperFlo Pump - 1/2hp - 43 gpm	Pentair		2
S	Trident UV System	Trident		2
T	Light J Box			2
U	18 kw Electric Heater	Coates	12418CE	1
V	5.5 kw Electric Heater	Coates	12406ST	1
X	LX 802 L - Control Box			1



APPROVED

ALL DIMENSIONS SUBJECT TO 1/4" TOLERANCES

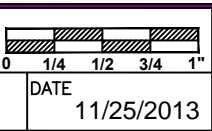
These drawings, concepts, and details contained herein are the original proprietary designs of **NESPA ENTERPRISES INC.**, developed over many years of experience in the industry and as such are protected by the copyright laws of the United States Government. Reproduction of any of the above without written permission to do so by **NESPA ENTERPRISES INC.**, is illegal.

NESPA ENTERPRISES INC.
 2800 Richter Ave. Ste. C Oroville, CA 95966
 Office: (530) 534-9910 Fax: (530) 534-9915
 E-Mail: jim@tiledspas.com Web Site: www.tiledspas.com



If printing as a PDF:
 Page Scaling:

SCALE
 3/8" = 1'

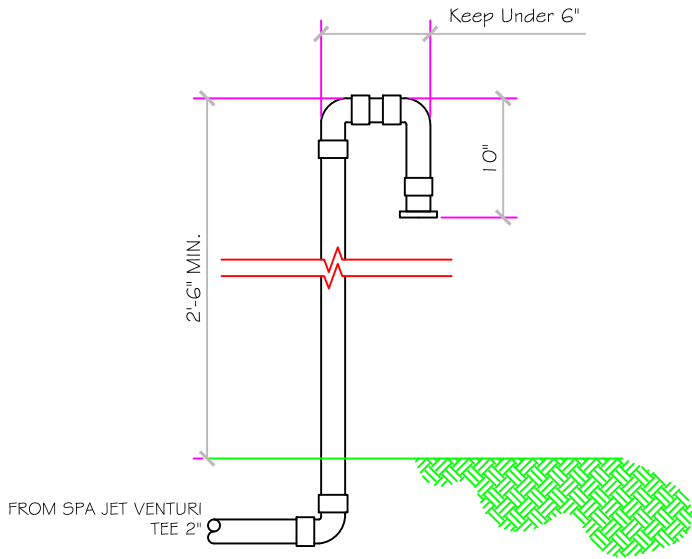


DWG TYPE
 EQ Layout

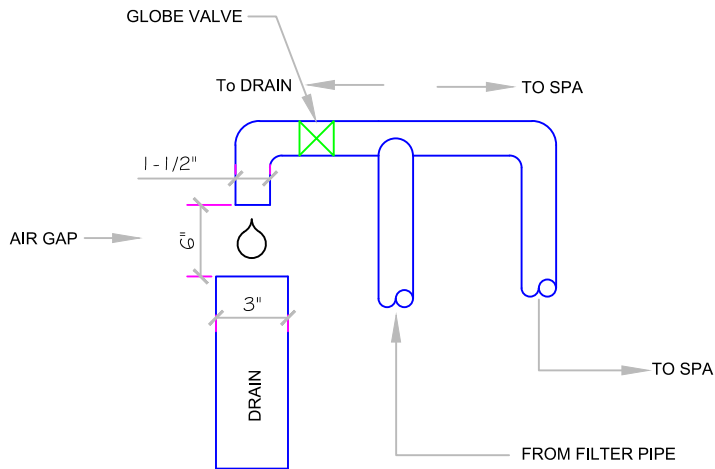
SHEET
 PAGE 2 OF 8

DWG NAME
 MOUNTAIN TREK

DATE
 11/25/2013

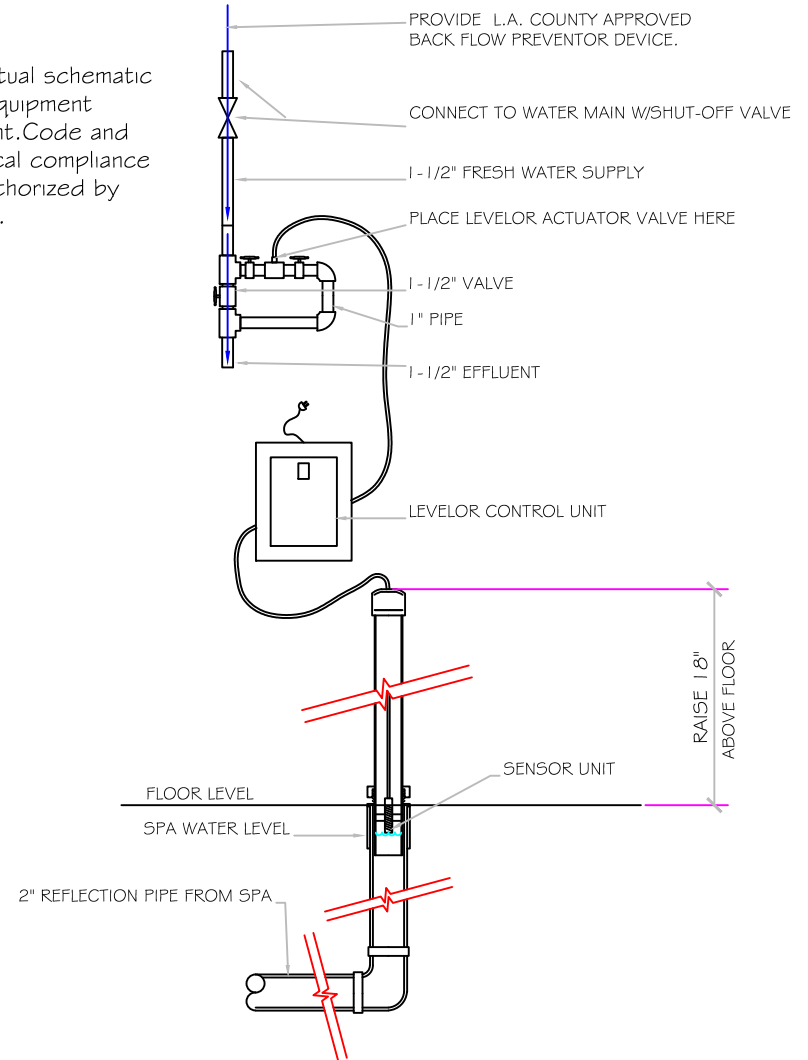


AIR SUPPLY LOOP DETAIL



DRAIN TO WASTE DETAIL

Note:
Conceptual schematic of spa equipment placement. Code and Mechanical compliance to be authorized by engineer.



WATER LEVEL CONTROL

APPROVED

ALL DIMENSIONS SUBJECT TO 1/4" TOLERANCES

These drawings, concepts, and details contained herein are the original proprietary designs of **NESPA ENTERPRISES INC.**, developed over many years of experience in the industry and as such are protected by the copyright laws of the United States Government. Reproduction of any of the above without written permission to do so by **NESPA ENTERPRISES INC.**, is illegal.

NESPA ENTERPRISES INC.

2800 Richter Ave. Ste. C Oroville, CA 95966

Office: (530) 534-9910

Fax: (530) 534-9915

E-Mail: jim@tiledspas.com Web Site: www.tiledspas.com

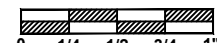


If printing as a PDF:

Page Scaling: None

SCALE

3/4" = 1'



DWG TYPE

Plumbing Detail

DWG NAME

MOUNTAIN TREK

DATE

11/25/2013

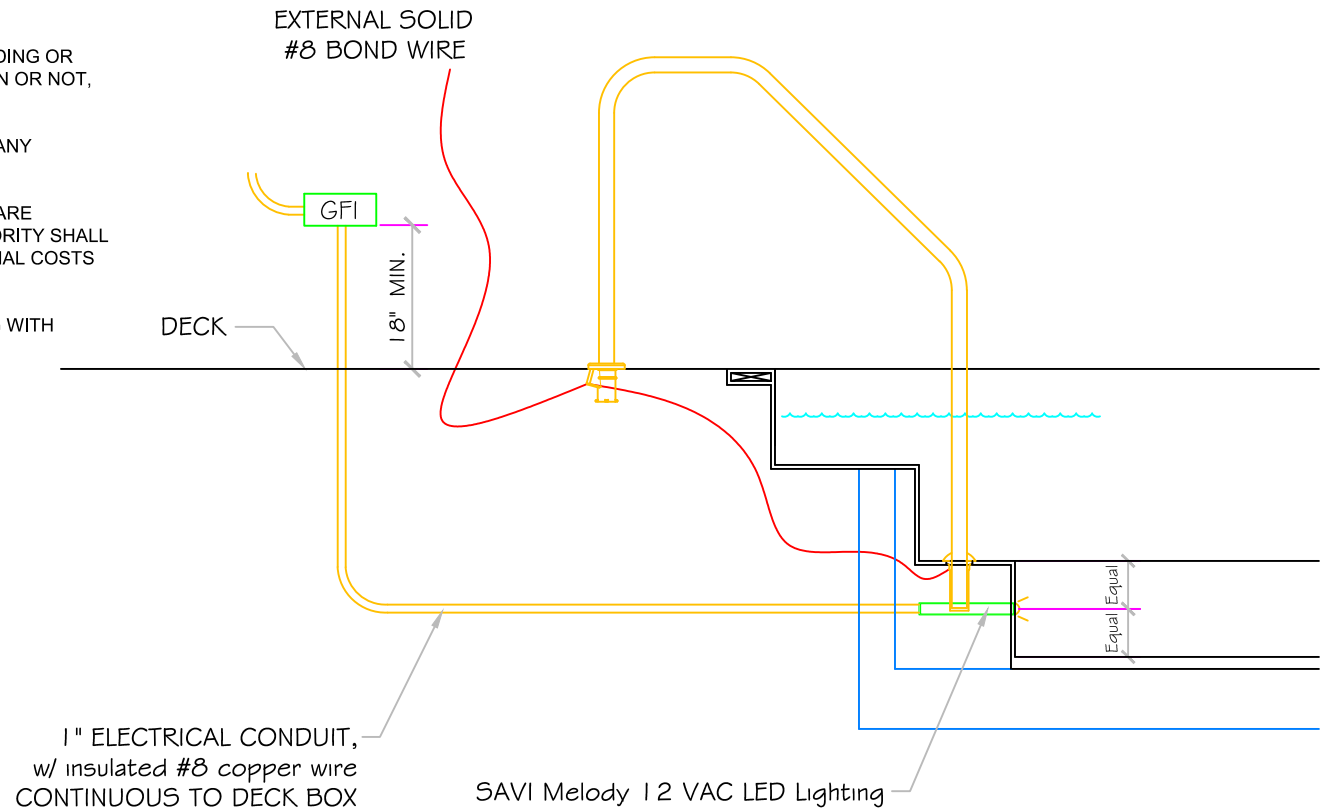
SHEET

PAGE 3 OF 8

POOL BONDING REQUIREMENTS:

1. THE FOLLOWING PARTS SHALL BE BONDED TOGETHER AND CONNECTED TO THE COMMON BONDING GRID.
 - A. ALL THE METALLIC PARTS OF THE POOL STRUCTURE INCLUDING COPPING STONES, DECK, PERMANENT PLAY STRUCTURES, PERMANENT EXERCISE STRUCTURES.
 - B. ALL METAL FITTINGS WITHIN OR ATTACHED TO THE POOL STRUCTURE
 - C. METAL PARTS ASSOCIATED WITH THE POOL WATER CIRCULATING SYSTEM, INCLUDING PUMPS, FILTERS, AND HEATERS.
 - D. METAL PARTS ASSOCIATED WITH POOL COVERS
 - E. METAL SHEATHED CABLES AND RACEWAYS, METAL PIPING AND ALL FIXED METAL PARTS WITHIN 5 FEET HORIZONTALLY OF INSIDE WALLS OF POOL AND WITHIN 12 FEET ABOVE MAXIMUM WATER LEVEL OF POOL.
 - F. METAL PARTS ASSOCIATED WITH OBSERVATION STANDS, TOWERS, PLATFORMS, AND DIVING STRUCTURES.
2. BONDING CONDUCTORS SHALL BE MINIMUM #8 SOLID COPPER, INSULATED E.C. SHALL COORDINATE APPROVED CONNECTOR TYPE AND METHOD WITH LOCAL ELECTRICAL AND/ OR POOL INSPECTOR.
3. SPECIFIC MANUFACTURER'S INSTRUCTIONS REGARDING BONDING OR GROUNDING OF POOL EQUIPMENT, WHETHER INDICATED HEREIN OR NOT, SHALL BE STRICTLY FOLLOWED.
4. THE COMMON BONDING GRID SHALL NOT BE CONNECTED TO ANY ELECTRICAL DISTRIBUTION EQUIPMENT.
5. ANY PARTS IN ADDITION TO THOSE DESCRIBED HEREIN THAT ARE INDICATED BY POOL CONTRACTOR OR LOCAL INSPECTION AUTHORITY SHALL BE BONDED TO THE COMMON BONDING GRID WITH NO ADDITIONAL COSTS INCURRED BY THE OWNER.
6. THE ELECTRICAL CONTRACTOR SHALL COORDINATE BONDING WITH GENERAL CONTRACTOR.

LED LIGHT DETAIL



APPROVED

ALL DIMENSIONS SUBJECT TO 1/4" TOLERANCES

These drawings, concepts, and details contained herein are the original proprietary designs of **NESPA ENTERPRISES INC.**, developed over many years of experience in the industry and as such are protected by the copyright laws of the United States Government. Reproduction of any of the above without written permission to do so by **NESPA ENTERPRISES INC.**, is illegal.

NESPA ENTERPRISES INC.
 2800 Richter Ave. Ste. C Oroville, CA 95966
 Office: (530) 534-9910 Fax: (530) 534-9915
 E-Mail: jim@tiledspas.com Web Site: www.tiledspas.com

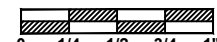


If printing as a PDF:

Page Scaling:

SCALE

1/2" = 1'



DWG TYPE

Bonding Detail

DWG NAME

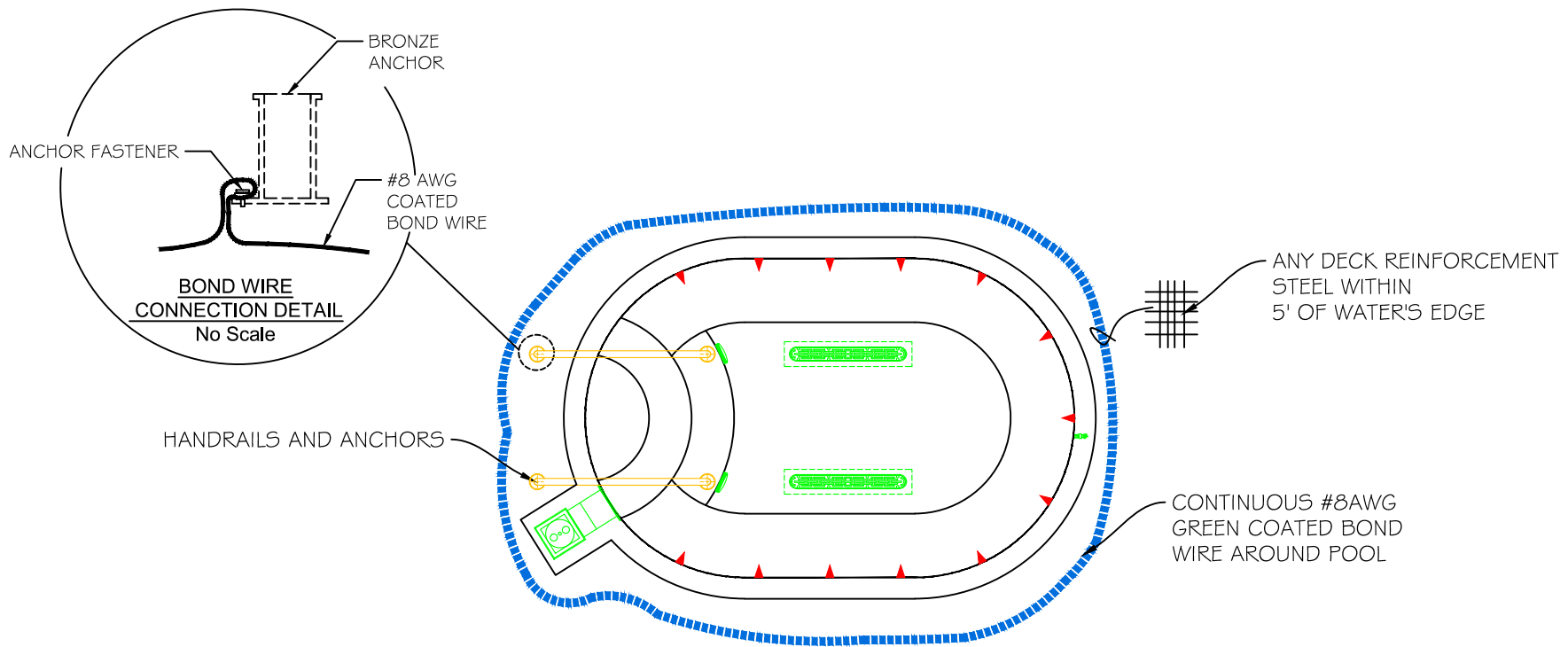
MOUNTAIN TREK

DATE

11/25/2013

SHEET

PAGE 4 OF 8



TYPICAL BONDING DETAIL

1. INSTALL PER NEC 2008, SECTION 680 REQUIREMENTS
2. USE #8 COATED TAILS OFF BOND LOOP TO EQUIPMENT AND STEEL NOT IMMEDIATELY ADJACENT TO BOND LOOP

APPROVED

ALL DIMENSIONS SUBJECT TO 1/4" TOLERANCES

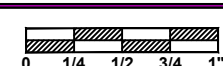
These drawings, concepts, and details contained herein are the original proprietary designs of **NESPA ENTERPRISES INC.**, developed over many years of experience in the industry and as such are protected by the copyright laws of the United States Government. Reproduction of any of the above without written permission to do so by **NESPA ENTERPRISES INC.**, is illegal.

NESPA ENTERPRISES INC.
 2800 Richter Ave. Ste. C Oroville, CA 95966
 Office: (530) 534-9910 Fax: (530) 534-9915
 E-Mail: jim@tiledspas.com Web Site: www.tiledspas.com



If printing as a PDF:
 Page Scaling:

SCALE
 1/4" = 1'



DWG TYPE
 Bonding Detail (2)

DWG NAME
 MOUNTAIN TREK

DATE
 11/25/2013

SHEET
 PAGE 5 OF 8

ICC-ES PMG Listing

PMG-1161



Effective Date: September 1, 2013

This listing is subject to re-examination in one year.

www.icc-es-pmg.org | (800) 423-6587 | (562) 699-0543 A Subsidiary of the International Code Council®

CSI: DIVISION: 13 00 00 – SPECIAL CONSTRUCTION
Section: 13 17 00 – Tub and Pools

Product certification system:

The ICC-ES product certification system includes testing samples taken from the market or supplier's stock, or a combination of both, to verify compliance with applicable codes and standards. The system also involves factory inspections, and assessment and surveillance of the supplier's quality system.

Product: Spa Shell (Tile Lined FRP)

Listee: Nespa Enterprises, Inc.
2800 Richter Avenue, Suite C
Oroville, CA 95966
www.tiledspas.com

Compliance with the following codes:

2012 and 2009 International Swimming Pool and Spa Code™ (ISPSA)
2012 and 2009 Uniform Swimming Pool, Spa and Hot Tub Code® (USPSHTC)
**Uniform Swimming Pool, Spa and Hot Tub Code is a copyrighted publication of the International Association of Plumbing and Mechanical Officials*

Compliance with the following standards:

ANSI Z124.7-2013 American National Standard for Prefabricated Plastic Spa Shells

Identification:

Each unit of Spa Shell shall be marked with manufacturer's name or trademark and ICC-ES PMG mark of conformity. Marking shall be permanent and legible so as to be visible after installation. A label shall be permanently affixed to each unit in a visible location and shall include the manufacturer's name and/or trademark, and model designation. Units manufactured as "Shell Only" shall be so identified and labeled. Unit shall be permitted to be marked "ANSI Z124.7" signifying compliance with the standard.

Installation:

Each unit of Spa shell shall be installed in accordance with manufacturer's published installation instructions and applicable codes.

Listings are not to be construed as representing aesthetics or any other attributes not specifically addressed, nor are they to be construed as an endorsement of the subject of the listing or a recommendation for its use. There is no warranty by ICC Evaluation Service, LLC, express or implied, as to any finding or other matter in this listing, or as to any product covered by the listing.

Models:

Acapulco	Mirage 9'
Acapulco II	Mirage 11'
Acapulco III	Mirage 13'
Acapulco IV	Mirage 15'
Blackthorne	Mirage 17'
Capri	Monaco
Caribbean	Nespa Swim Spa 12'
Corsica	Nespa Swim Spa 16'
Corsica-Modified	Nespa Swim Spa 18'
Eight Ft. Round	Nespa Swim Spa 20'
Imperia	Rimini
Imperia II	Rimini Commercial
Kidney*	Round* 7'
Legacy 10'	Round* 9'
Legacy 12'	Round* 11'
Legacy 14'	Serenity* 12'
Legacy 16'	Six Ft. Round
Legacy 18'	Tahoe*
Legacy 20'	Ten Ft. Round
Maxima	Vallarta

Note: Models with an "*" indicate that the tile size must be 2" x 2"

Tile lined, polyester resin reinforced fiberglass spa shells in various colors, sizes, and configurations. May or may not be provided with insulation. All units, whether factory or field assembled, are required to have suction fittings installed which are certified to ASME A112.19.8 for anti-hair and body entrapment. All units are listed for above or below ground installation and may be portable or permanent.

Conditions of listing:

1. NESPA's Spa Shell shall be installed in accordance with manufacturer's published installation instruction and applicable codes.
2. NESPA Spa Shell is manufactured in Oroville, California under a quality control program with annual inspection by ICC-ES.

APPROVED

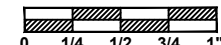
ALL DIMENSIONS SUBJECT TO 1/4" TOLERANCES



If printing as a PDF:

Page Scaling:

SCALE
N/A

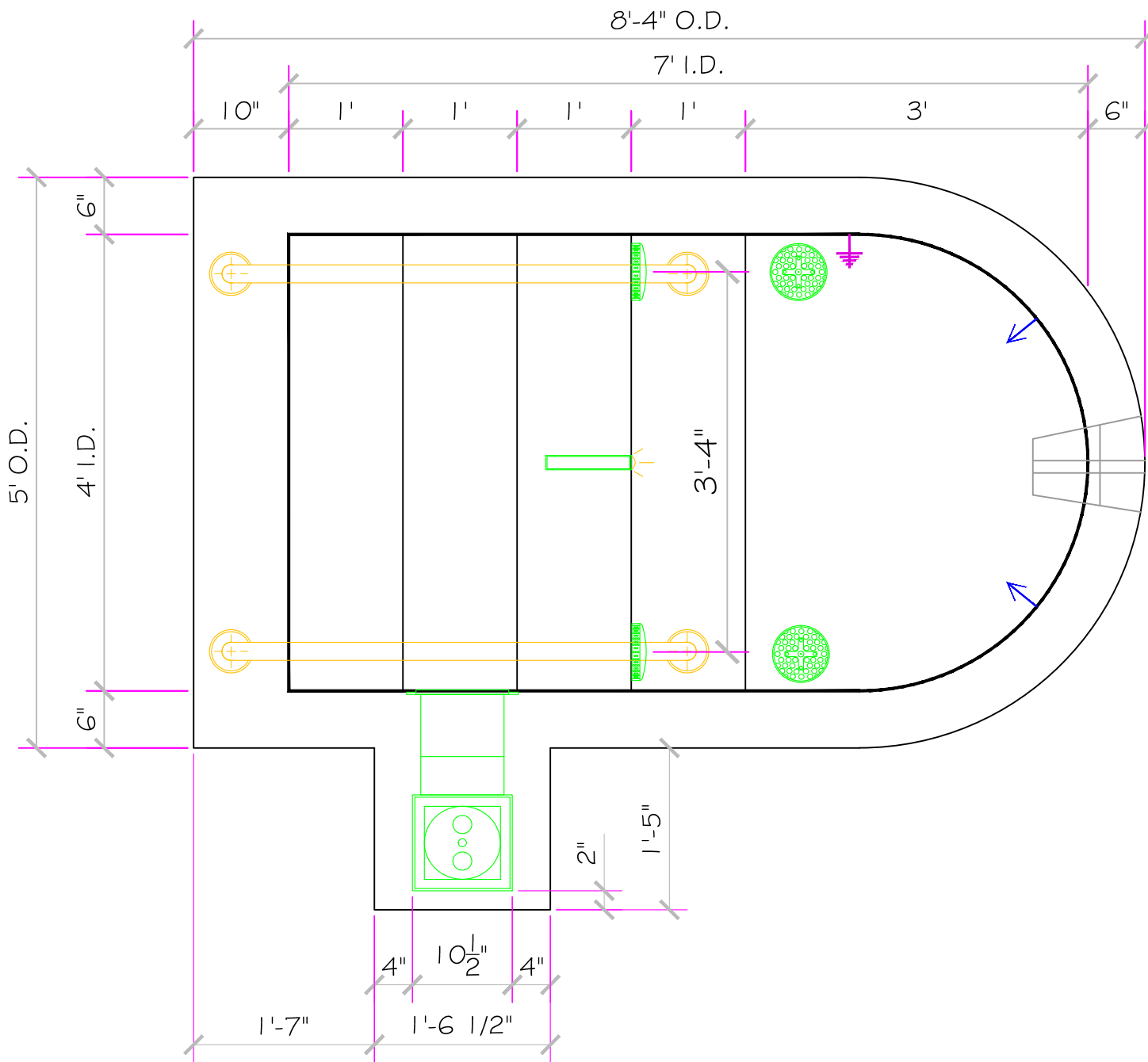


DWG TYPE
ICC Docs

DWG NAME
MOUNTAIN TREK

DATE
11/25/2013

SHEET
PAGE 8 OF 8



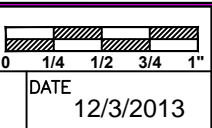
These drawings, concepts, and details contained herein are the original proprietary designs of **NESPA ENTERPRISES INC.**, developed over many years of experience in the industry and as such are protected by the copyright laws of the United States Government. Reproduction of any of the above without written permission to do so by **NESPA ENTERPRISES INC.**, is illegal.

NESPA ENTERPRISES INC.
 2800 Richter Ave. Ste. C Oroville, CA 95966
 Office: (530) 534-9910 Fax: (530) 534-9915
 E-Mail: jim@tiledspas.com Web Site: www.tiledspas.com



If printing as a PDF:
 Page Scaling:

SCALE
 3/4" = 1'

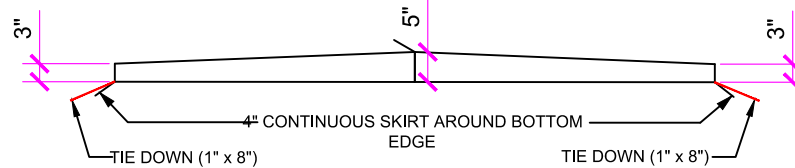
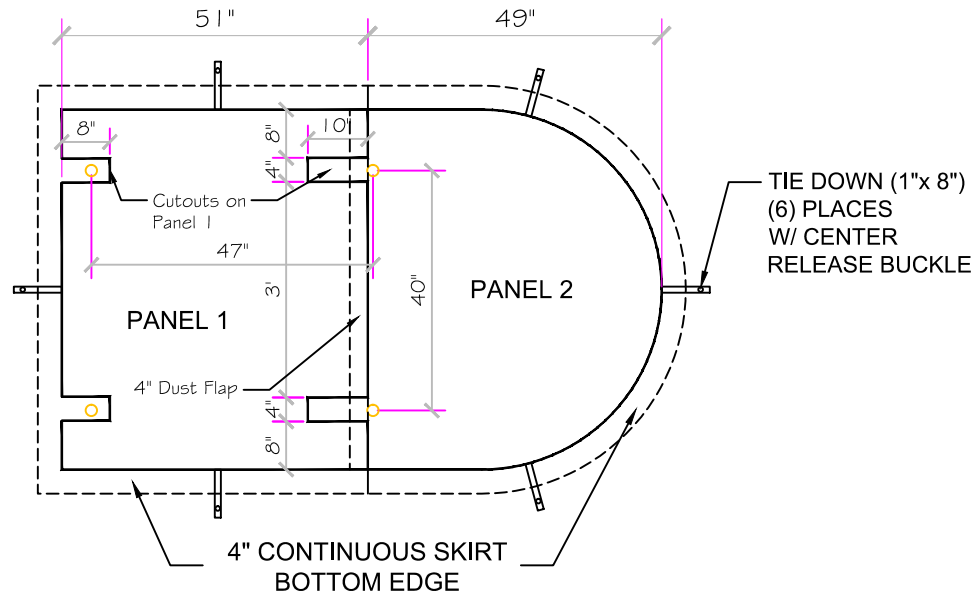


DWG TYPE
 Plunge Skimmer

SHEET
 PAGE 1 OF 1

DWG NAME
 MOUNTAIN TREK

DATE
 12/3/2013



SPA COVER #204-R1

Rust - 2 PC.

For: Mountain Trek

STANDARD NESPA IN-GROUND INSTALLATION INSTRUCTIONS **SET-UP AND EXCAVATION**

Prerequisites: Before installing your Nespa spa. You may be required to acquire a permit from your local State, County, and City building dept and or Health department. (Commercial jobs need Health Dept. Approval). Your spa installation must comply with the most current codes. (**Uniform Swimming Pool, Spas & Hot Tub Code 2006 (USPC 2006)**).

Spa drawings: Request from Nespa a current spa specific construction detail, plan and section, spa plumbing detail.

Delivery Access: Clearly determine the method of getting the spa to jobsite and into the hole. This may require the use of a crane, forklift, hoist, backhoe and/or manpower etc.

- 1) The following instructions are general guidelines and may not apply to your specific jobsite conditions. When excavating for your spa remember to provide for plumbing and light connection clearances. In order to determine how to excavate for your spa or swim spa, measure spas outside dimension (O.D.) and add minimum 3" to all sides. This 3" clearance is to accommodate jet and suction plumbing. This 3" clearance can change or be reduced upon request. Note: skimmer location, this area may have to be larger than 3", if commercial 22".
- 2) **Freeze Climates-** If the spa is placed into a vault (typical of freeze climates) a standard 18" or more of clearance minimum from spa perimeter should be provided. This dead air space is for possible future access to spa plumbing in case of a freeze. Area drain is mandatory. **Ask your local installer** for his experienced opinion. Do not hesitate to call us because we want to be sure that your installation progresses as smoothly as possible. If you have questions call us. (888) 479-4677.
- 2) **Hole depth** is determined by spa's outside height dimension. This height may vary depending if spa has skids or no skids. The spa lip may be finished or non-finished. How is the perimeter deck elevation transitioning to the spa? Focus on the finish surrounding deck elevations, thickness of the finish material on spa upper horizontal lip, equal to lip or under the spa lip. This material can be tile, stone, concrete or brick.
- 3) **Preplumb** the spa before it goes into the hole. If there are needs for electrical, bonding or control conduits run them as well before dropping in hole. Connect bond wire to niche would be best.
- 4) **Spa should sit on level 3 ½" thick reinforced concrete pad. Sweep debris off pad prior to dropping in hole.**
- 5) **Install spa** into the hole on top of concrete pad. Use the Eye bolts provided for crane, forklift etc. rigging. Do not hold onto pipes. Use caution with suction and jet plumbing when lowering into hole. **DO NOT STRESS FITTINGS!** Fill Spa with water and check for leaks prior to backfill.

- 6) **Check site reference** points for proper spa positioning (i.e., squaring to house, garage, etc.).
- 7) **Shim to level spa.** Shim with non-compression able material. Re square to house, or ref. point.
- 8) **Dry pack** with cement the gaps that have been created when shimming spa level.
- 9) **Connect pipes to tees** if spa is preplumb. Installers properly support your new plumbing from stressing spas preplumb fittings. After electrical conduit and bond wire is connected to light niche, water test spa before back filling with sand.
NOTE: All Nespa products are water tested prior to leaving factory.

ELECTRICAL:

- 1) All electrical connections to spa or equipment should comply with the most recent national electrical code (NEC), state and local codes.
- 2) Connect electrical conduit to light niche. This work should be done or reviewed by a licensed electrician.
- 3) To install spa light you will need to include inside the PVC conduit to the light niche a solid #8 coated copper wire. (If you are use brass conduit, internal bond wire is not required.) This bond wire should be pulled with the light cord at the same time. This bond wire needs to be attached to the internal bonding lug of the light niche. An approved encapsulate should be applied to bond wire connection in niche.
- 4) An external #8 copper wire shall be connected to the external bonding lug on the rear of the light niche. This copper wire can then be used for additional bonding requirements (i.e., handrails or any other metallic object within 5' of the spa.

PLUMBING:

- 1) **When plumbing a Nespa it is important to properly size the plumbing. We highly recommend that you follow the pump manufacturer's pipe sizing requirements and Uniform Swimming Pool, Spas & Hot Tub Code 2006 (USPC 2006). This code book is available at www.IAPMO.org or (909) 472 4100.**
- 2) The jet air venturi should be a Hartford loop design adjacent to spa shell and air entry point can be located next to spa or remotely at equipment.
- 3) Fill spa with water and test the system for leaks PRIOR to backfilling with sand.

SAND BACK FILL:

- 1) **With water in spa, back-fill around spa perimeter with dry plaster sand and wet wash with hydraulic attachment to hose. Let set for one hour and hydraulic dry again. Be sure water level in spa is at the highest level. Any questions please call us. (888) 479-4677.**
- 2) **If spa is free standing on elevated deck or a structure, it is important to fill spa with water and load area prior to installing coping or perimeter decking. If spa is installed in a vault situation a area drain is needed.**

NESPA ENTERPRISES INC.

2800 Richter Ave. Suite E

Oroville, CA 95966

Office: (888) 479-4677 Fax: (530) 534-9915

E-Mail: nespa@pacbell.net www.tiledspas.com

IN-GROUND

INSTALLATION

ALL DIMENSIONS SUBJECT TO 1/4" TOLERANCES

SCALE: 1/2" = 1'-0"

DATE: 3/27/02

JOB : STANDARD INSTALL

DW #: SI-1, SI-2

NOTE:

Sump pump or gravity drain is required for removing water from vault



STANDARD VAULT INSTALLATION

SI-1



HOLE EXCAVATION:

EXCAVATE HOLE 1'-0" LARGER THAN THE OUTSIDE DIAMETER (OD) OF SPA

4" CONCRETE SLAB REINFORCED WITH #10 MESH

STANDARD INGROUND INSTALLATION

SI-2

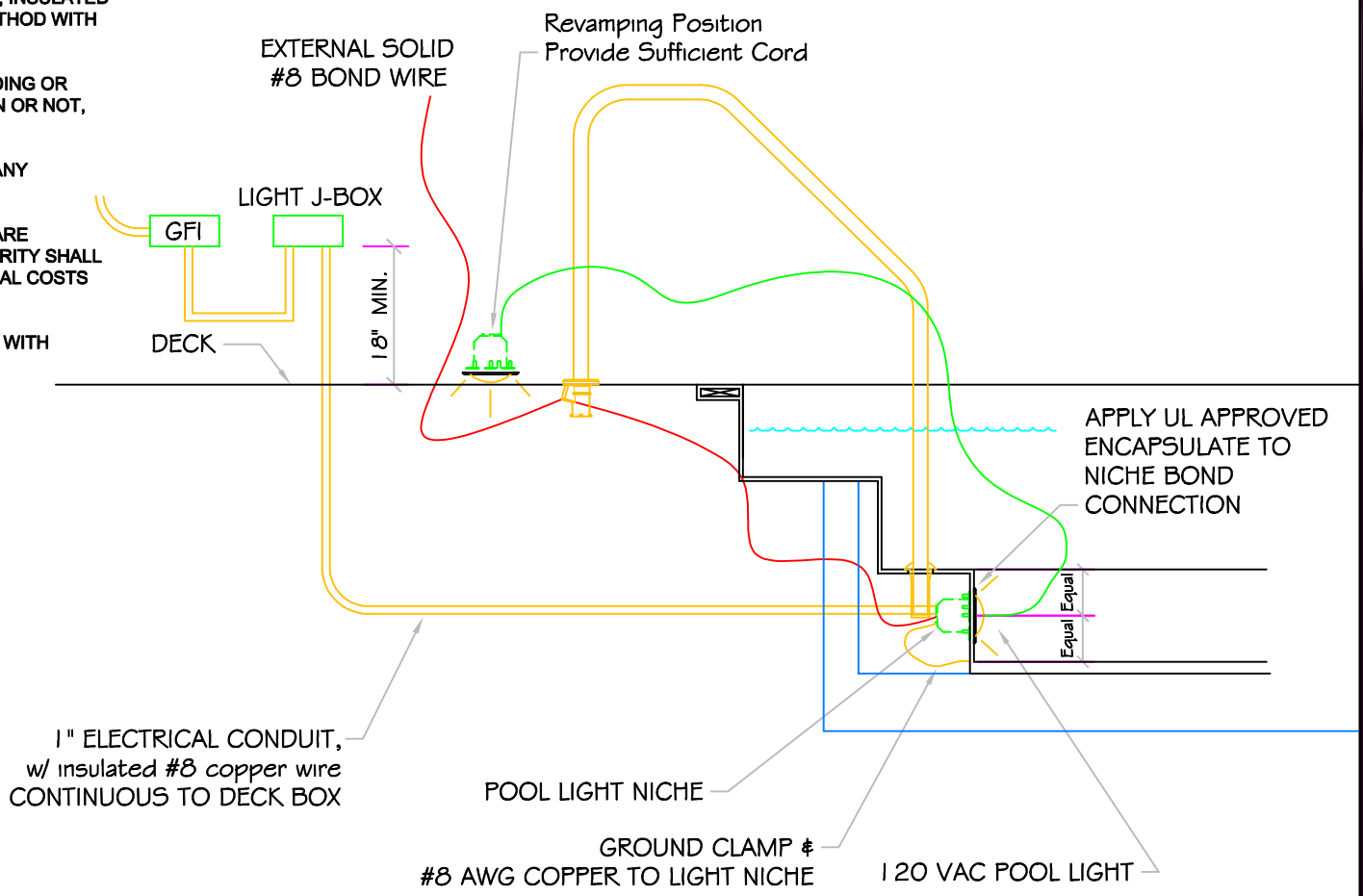
NOTE:

Footing can not surcharge spa. Slope from bottom of slab to nearest corner of house footing must not exceed 1" = 1".

POOL BONDING REQUIREMENTS:

1. THE FOLLOWING PARTS SHALL BE BONDED TOGETHER AND CONNECTED TO THE COMMON BONDING GRID.
 - A. ALL THE METALLIC PARTS OF THE POOL STRUCTURE INCLUDING COPING STONES, DECK, PERMANENT PLAY STRUCTURES, PERMANENT EXERCISE STRUCTURES.
 - B. ALL METAL FITTINGS WITHIN OR ATTACHED TO THE POOL STRUCTURE
 - C. METAL PARTS ASSOCIATED WITH THE POOL WATER CIRCULATING SYSTEM, INCLUDING PUMPS, FILTERS, AND HEATERS.
 - D. METAL PARTS ASSOCIATED WITH POOL COVERS
 - E. METAL SHEATHED CABLES AND RACEWAYS, METAL PIPING AND ALL FIXED METAL PARTS WITHIN 5 FEET HORIZONTALLY OF INSIDE WALLS OF POOL AND WITHIN 12 FEET ABOVE MAXIMUM WATER LEVEL OF POOL.
 - F. METAL PARTS ASSOCIATED WITH OBSERVATION STANDS, TOWERS, PLATFORMS, AND DIVING STRUCTURES.
2. BONDING CONDUCTORS SHALL BE MINIMUM #8 SOLID COPPER, INSULATED E.C. SHALL COORDINATE APPROVED CONNECTOR TYPE AND METHOD WITH LOCAL ELECTRICAL AND/ OR POOL INSPECTOR.
3. SPECIFIC MANUFACTURER'S INSTRUCTIONS REGARDING BONDING OR GROUNDING OF POOL EQUIPMENT, WHETHER INDICATED HEREIN OR NOT, SHALL BE STRICTLY FOLLOWED.
4. THE COMMON BONDING GRID SHALL NOT BE CONNECTED TO ANY ELECTRICAL DISTRIBUTION EQUIPMENT.
5. ANY PARTS IN ADDITION TO THOSE DESCRIBED HEREIN THAT ARE INDICATED BY POOL CONTRACTOR OR LOCAL INSPECTION AUTHORITY SHALL BE BONDED TO THE COMMON BONDING GRID WITH NO ADDITIONAL COSTS INCURRED BY THE OWNER.
6. THE ELECTRICAL CONTRACTOR SHALL COORDINATE BONDING WITH GENERAL CONTRACTOR.

LIGHT DETAIL



ALL DIMENSIONS SUBJECT TO 1/4" TOLERANCES

These drawings, concepts, and details contained herein are the original proprietary designs of NESPA ENTERPRISES, developed over many years of experience in the pool and spa industry and as such are protected by the copyright laws of the United States Government. Reproduction of any of the above without written permission to do so by NESPA ENTERPRISES, is illegal.

NESPA ENTERPRISES INC.
 2800 Richter Ave. Ste. C Oroville, CA 95966
 Office: (530) 534-9910 Fax: (530) 534-9915
 E-Mail: sales@tiledspas.com Web Site: www.tiledspas.com



SIZE A	DWG NAME DETAILS	DWG TYPE Detail
SCALE 1/2" = 1'	DATE 7/24/2008	SHEET PAGE 1 OF 1

NESPA ENTERPRISES, Inc. LIMITED WARRANTY

This LIMITED WARRANTY covering NESPA products is extended to the ORIGINAL PURCHASER-USER BY NESPA ENTERPRISES Inc.(NESPA), 2800 Richter Ave. Unit C California 95966.

NESPA products are thoroughly inspected and tested prior to factory shipment. NESPA warrants to the ORIGINAL PURCHASER-USER that NESPA Spas and Swim Spas will be free of defect in workmanship, accessories and parts, provided said accessories and parts were manufactured by NESPA. NESPA, under this LIMITED WARRANTY, warrants only that its Spas and Swim Spas shall be structurally sound, shall retain their shape, and shall retain water for the warranty period. NESPA warrants the adhesion of tile to fiberglass for a period of three (3) years and structural soundness for ten (10) years. NESPA warrants epoxy grout adhesion for a period of three years. If any such defects appear and are reported within the warranty period, NESPA shall repair or replace such defective parts without charge if an inspection proves the claim.

The provisions of the LIMITED WARRANTY shall not apply to tile cracked, split, chipped or damaged after the product has left the factory, nor damage to tile caused by freezing nor to damage, defect, malfunction or failure to conform with the above warranty provisions where the damage, defect, malfunction or failure to conform was caused during shipment or by distributor or by unreasonable use by ORIGINAL PURCHASER-USER including improper water balance and improper sand pack or support.

This LIMITED WARRANTY shall not apply to any plumbing, equipment, or installation of spas and Swim Spas and shall not apply to any alterations made to or upon NESPA products except alterations made by NESPA employees or NESPA authorized representatives.

This LIMITED WARRANTY is expressly in lieu of all other warranties expressed or implied including the warranties of merchantability and fitness for use and all other obligations or liabilities on NESPA'S part, and NESPA neither assumes nor authorizes any other person to assume for NESPA any other liability in connection with the sale of this NESPA product. This LIMITED WARRANTY shall not apply to this NESPA product or any part thereof which has been subject to accident, negligence, alteration, abuse or misuse. NESPA makes no warranty whatsoever with respect to accessories or parts not manufactured by NESPA.

The term "ORIGINAL PURCHASER-USER" as used in this LIMITED WARRANTY shall be deemed to mean that person for whom the NESPA product is originally installed.

The LIMITED WARRANTY provided herein and the obligations and liabilities of NESPA hereunder are exclusive and are in lieu of, and buyer and original PURCHASE-USER hereby waive all other remedies, warranties, guarantees or liabilities, expressed or implied, arising by law or otherwise (including without limitation and obligations of NESPA with respect to fitness, merchantability, and consequential damages) or whether or not occasioned by NESPA'S negligence.

This LIMITED WARRANTY shall not be extended, altered or varied except by a written instrument signed by NESPA and original PURCHASER-USER.