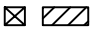






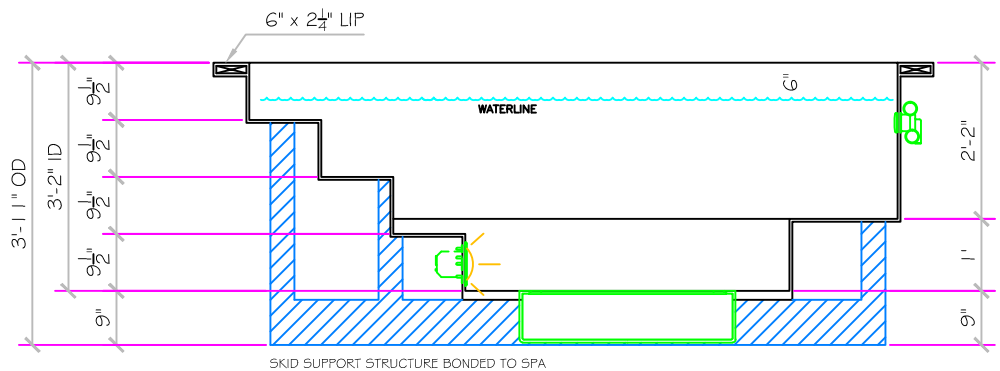
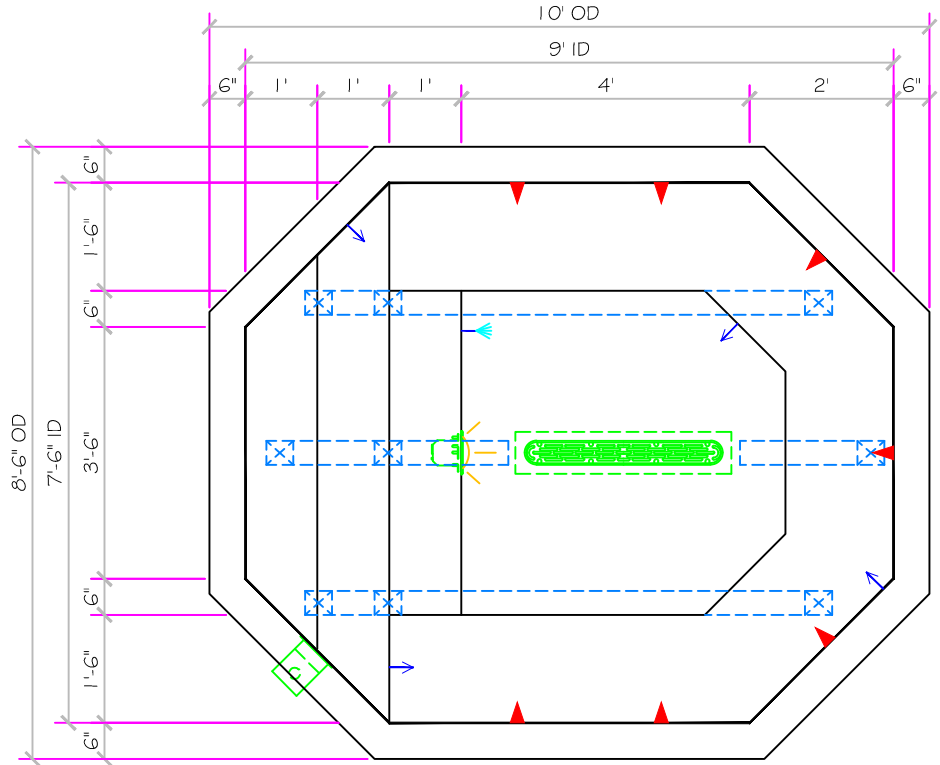


9' MIRAGE

ALL TILED SPA - Fits 5 Adults

| SPECIFICATIONS | |
|----------------|-------------|
| DRY WEIGHT: | 2400 LBS. |
| TOTAL WEIGHT: | 11380 LBS. |
| WATER: | 1077.1 GAL. |
| VOLUME: | 144 Cu.Ft. |
| WEIGHT: | 8980 LBS. |
| SURFACE AREA: | 60 SQ. FT. |
| IAPMO#: | 1138 |
| FDA#: | 2030305 |

| | |
|---|--|
| SKID SUPPORT STRUCTURE* BONDED TO SPA | |
|  | *SKIDS SUPPLIED BY NESPA. |
| LIGHT NICHE | |
|  | SPA BRIGHT, 120 V, 100 WATT, 50' CORD, U.L. APPROVED |
| MAIN DRAIN | |
|  | AsusStar 32CDFR, 32" Channel Drain, Approved Max Flow Rate: Floor = 225 GPM @ 3.4 fps Wall = 136 GPM @ 1.9 fps V.G.B Approved Safety Drain |
| SKIMMER | |
|  | FRONT ACCESS SKIMMER, NSF APPROVED |
| JET | |
|  | HYDRO INLETS 1-1/2" WATER - 1-1/2" AIR HYDROAIR #10-5100 COMPLIES W/ ANSI CODE ASME A112.19.8-07 UL APPROVED |
| RETURN | |
|  | INLET FITTINGS 1-3/8" WALL TYPE W/ EYEBALL HYDROAIR #10-3500 COMPLIES W/ ANSI CODE ASME A112.19.8-07 UL APPROVED |
| FILL | |
|  | INLET FITTINGS 1-1/2" WALL TYPE W/ EYEBALL HYDROAIR #10-3500 COMPLIES W/ ANSI CODE ASME A112.19.8-07 UL APPROVED |



ALL DIMENSIONS SUBJECT TO 1/4" TOLERANCES

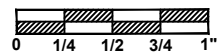
NESPA ENTERPRISES INC.
 2800 Richter Ave. Suite C Oroville, CA 95966
 Office: (530) 534-9910 Fax: (530) 534-9915
 E-Mail: jim@tiledspas.com Web Site: www.tiledspas.com



If printing as a PDF:

Page Scaling:

SCALE
3/8" = 1"



DWG TYPE
SD

DWG NAME
NESPA_RES_MODELS

DATE
8/2/2010

SHEET
PAGE 1 OF 1

These drawings, concepts, and details contained herein are the original proprietary designs of NESPA ENTERPRISES, developed over many years of experience in the industry and as such are protected by the copyright laws of the United States Government. Reproduction of any of the above without written permission to do so by NESPA ENTERPRISES, is illegal.