

PLAN APPROVAL DOCUMENTATION

PRELIMINARY

Please initial **Yes** or **No** for each item. Production will not start until all items are reviewed and approved.

1. I have reviewed and approved the Spa dimensions, width, length and height.(Pg 1)
Yes _____ No _____ Other _____
2. I have reviewed and approved the jet quantity, locations, and elevations. (Pg 2)
Yes _____ No _____ Other _____
3. I have reviewed and approved the Spa Tile Type, Grout and Layout. (Pg 3)
Yes _____ No _____ Other _____
4. I have reviewed and approved the Spa Plumbing Layout (Pg 5&6)
Yes _____ No _____ Other _____
5. I have reviewed and approved the Spa Location and Orientation (Pg 4&7)
Yes _____ No _____ Other _____
6. I have reviewed and approved the Spa Cover (Pg 8)
Yes _____ No _____ Other _____

I approve the above drawings **X** _____ Date: _____

Any changes to these plans from here forward shall be directed in writing to Nespa.


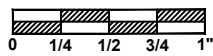
SPA FABRICATION AUTHORIZATION

Nespa's engineering and structural manufacturing departments may find it necessary to make slight adjustments (= 1") to your spa. This may include the size of the spa (OD/ID), tile cuts, depths, jet location, bench steps etc. These adjustments must be made in the primary stages of building the spa. The adjustments are generally made to ad structural and aesthetic integrity to the vessel. IE: balance of supporting gussets (exterior) and less tile cuts/ symmetrical cuts, grout lines, etc. (interior)

Please initial next to the following number that describes your project needs .

- _____ 1. YES, I understand adjustments need to be made. Nespa will use their expertise to make these adjustments as needed. I give them the authority to make changes. I will receive final accurate drawings prior to receipt of spa or spa hole construction (if changes were made to the size)
- _____ 2. NO, No changes can be made even under 1". Dimensions are fixed. More tile cuts may be needed, Structural supports may be altered to accommodate.
- _____ 3. Nespa will need to contact us for any changes to spa dimensions prior to continued spa fabrication.

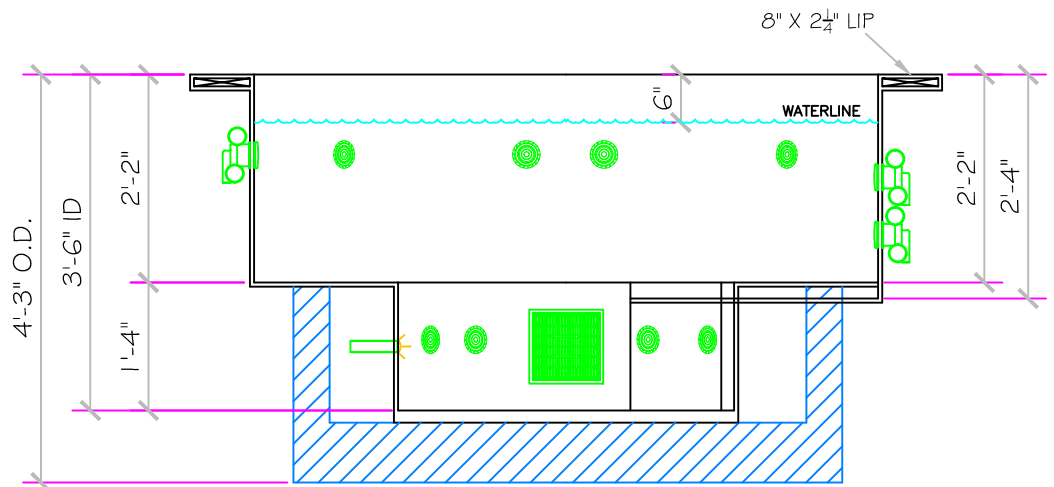
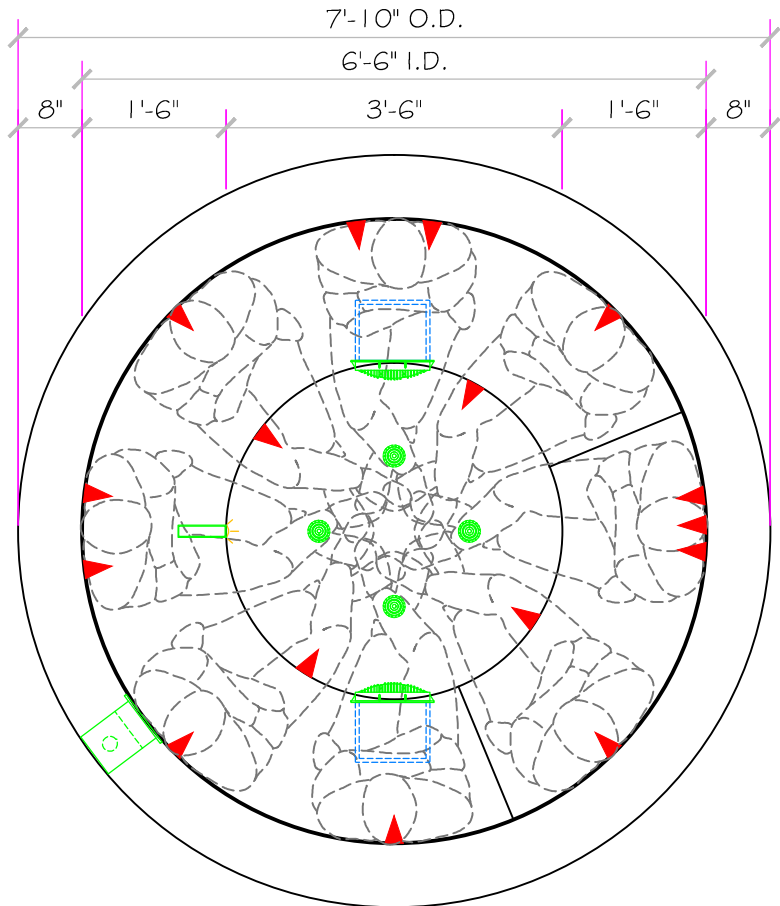
All drawing dimensions supplied by [NESPA ENTERPRISES INC.](#) are for reference only. All CAD files were created using AutoCAD file (*.dwg.) and were provided as a service to our customers using AutoCAD. Errors sometimes occur during this process and with software incompatibility upon opening a file. [NESPA ENTERPRISES INC.](#) and/or any authorized distributor of our products will not be held responsible for problems arising from files which have been converted and does not warranty the documents against deficiencies or typographical errors of any kind. We recommend that all measurements are verified with actual physical product before any custom fabrication in the field occurs.

NESPA ENTERPRISES INC. 2800 Richter Ave. Suite C Oroville, CA 95966 Office: (530) 534-9910 Fax: (530) 534-9915 E-Mail: jim@tiledspas.com Web Site: www.tiledspas.com		If printing as a PDF: Page Scaling: <input type="text" value="None"/>			DWG TYPE
		DWG NAME RAGGED POINT		DATE 5/16/2013	SHEET

These drawings, concepts, and details contained herein are the original proprietary designs of NESPA ENTERPRISES, developed over many years of experience in the industry and as such are protected by the copyright laws of the United States Government. Reproduction of any of the above without written permission to do so by NESPA ENTERPRISES, is illegal.

SPECIFICATIONS	
SHELL WEIGHT	1800 LBS.
WATER WEIGHT	4138 LBS.
TOTAL SHELL & WATER WEIGHT	5938.3 LBS.
WATER VOLUME	84 Cu.Ft.
WATER GALLONS	628 GAL.
SURFACE AREA	33.2 SQ. FT.
ICC ES LISTED #	PMG-1161
FDA#	2030305

SKID SUPPORT STRUCTURE* BONDED TO SPA	
	*SKIDS SUPPLIED BY NESPA
LIGHT NICHE	
	LED Spa Light
MAIN DRAIN	
	WATERWAY # 640-4700 V 9" X 9" FRAME, 39.9 sq. in. open area - Max Flow 289 GPM @ 2.33 fps (floor) Max Flow 198 GPM @ 1.59 fps (wall) COMPLIES W/ ANSI CODE ASME A112.19.8-07 UL APPROVED
SKIMMER	
	FRONT ACCESS SKIMMER, NSF APPROVED
JET	
	HYDRO INLETS 1-1/2" WATER - 1-1/2" AIR HYDROAIR #10-5100 COMPLIES W/ ANSI CODE ASME A112.19.8-07 UL APPROVED
RETURN	
	INLET FITTINGS 1-1/2" WALL TYPE W/ EYEBALL HYDROAIR #10-3500 COMPLIES W/ ANSI CODE ASME A112.19.8-07 UL APPROVED
FILL	
	INLET FITTINGS 1-1/2" WALL TYPE W/ EYEBALL HYDROAIR #10-3500 COMPLIES W/ ANSI CODE ASME A112.19.8-07 UL APPROVED



All drawing dimensions supplied by [NESPA ENTERPRISES INC.](http://www.nespa.com) are for reference only. All CAD files were created using AutoCAD file (*.dwg.) and were provided as a service to our customers using AutoCAD. Errors sometimes occur during this process and with software incompatibility upon opening a file. [NESPA ENTERPRISES INC.](http://www.nespa.com) and/or any authorized distributor of our products will not be held responsible for problems arising from files which have been converted and does not warrant the documents against deficiencies or typographical errors of any kind. We recommend that all measurements are verified with actual physical product before any custom fabrication in the field occurs.

5/16/2013 10:56:47 AM

PRELIMINARY

ALL DIMENSIONS SUBJECT TO 1/4" TOLERANCES

NESPA ENTERPRISES INC.
2800 Richter Ave. Suite C Oroville, CA 95966
Office: (530) 534-9910 Fax: (530) 534-9915
E-Mail: jim@tiledspas.com Web Site: www.tiledspas.com



If printing as a PDF:

Page Scaling:

DWG NAME: RAGGED POINT


SCALE
1/2" = 1'

DATE: 5/14/2013


0 1/4 1/2 3/4 1"


DWG TYPE: SD
SHEET: PAGE 1 OF 8


These drawings, concepts, and details contained herein are the original proprietary designs of [NESPA ENTERPRISES INC.](http://www.nespa.com), developed over many years of experience in the industry and as such are protected by the copyright laws of the United States Government. Reproduction of any of the above without written permission to do so by [NESPA ENTERPRISES INC.](http://www.nespa.com), is illegal.


LIGHT NICHE
 LED Spa Light

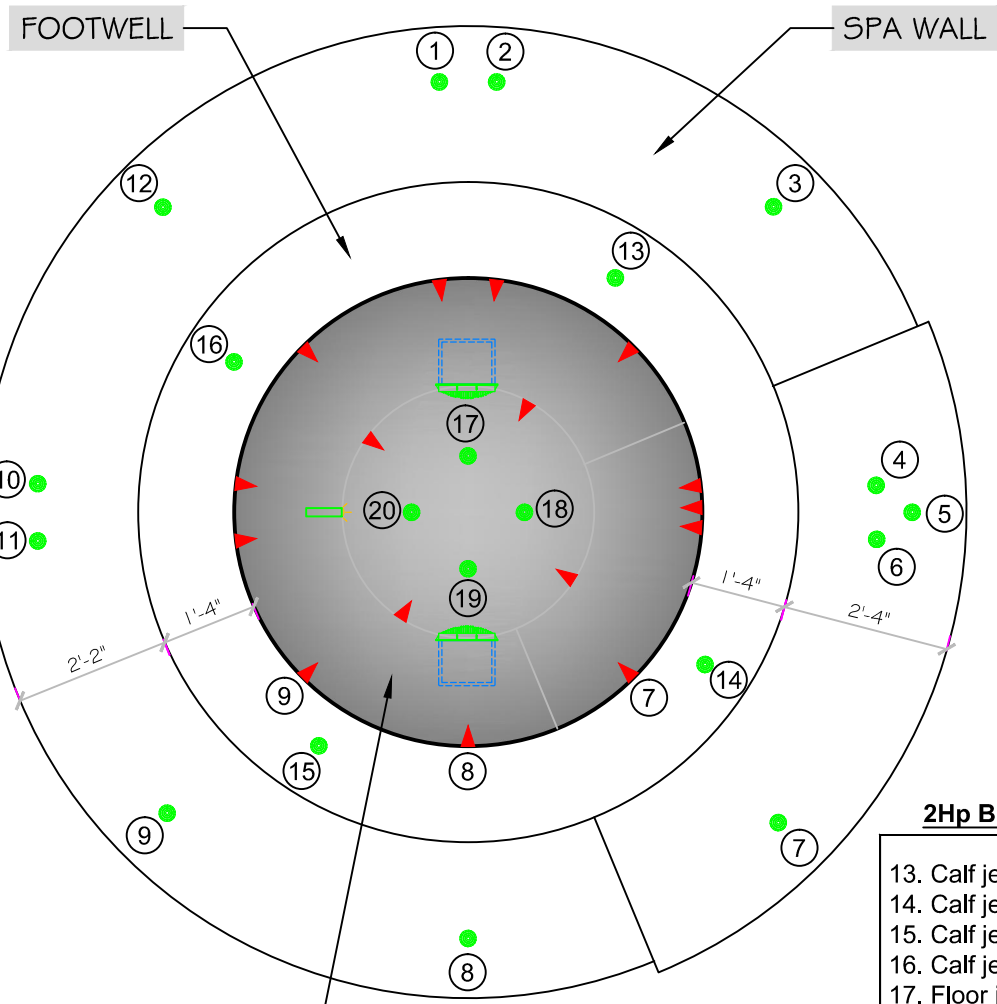
MAIN DRAIN
 WATERWAY # 640-4700 V
 9" X 9" FRAME, 39.9 sq. in.
 open area - Max Flow 289 GPM
 @ 2.33 fps (flow)
 Max Flow 198 GPM @ 1.59 fps
 (wall) COMPLIES W/ ANSI CODE
 ASME A112.19.8-07
 UL APPROVED

SKIMMER
 FRONT ACCESS
 SKIMMER, NSF
 APPROVED

JET
 HYDRO INLETS
 1-1/2" WATER - 1-1/2" AIR
 HYDROAIR #10-S100
 COMPLIES W/ ANSI CODE ASME A112.19.8-07
 UL APPROVED

RETURN
 INLET FITTINGS
 1-1/2" WALL TYPE W/ EYEBALL
 HYDROAIR #10-3500
 COMPLIES W/ ANSI CODE ASME A112.19.8-07
 UL APPROVED

FILL
 INLET FITTINGS
 1-1/2" WALL TYPE W/ EYEBALL
 HYDROAIR #10-3500
 COMPLIES W/ ANSI CODE ASME A112.19.8-07
 UL APPROVED



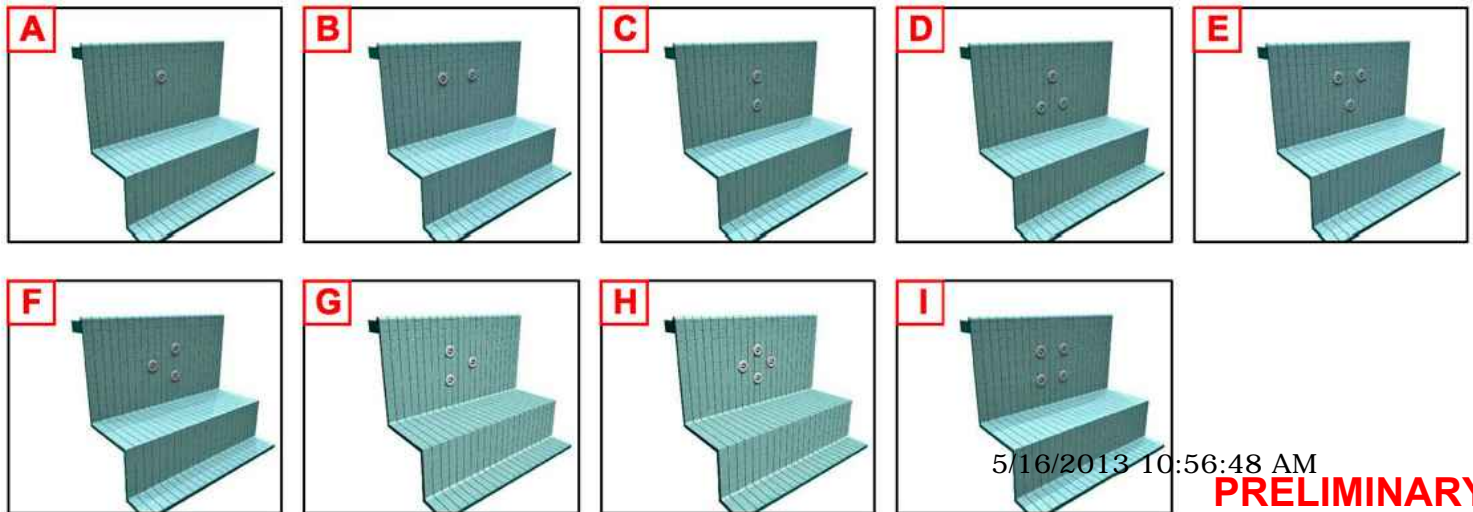
**Upper Wall
 3Hp Booster Pump**

- 1. Wall Jet elevation +15
- 2. " " " +15
- 3. " " " +10
- 4. " " " +8
- 5. " " " +14
- 6. " " " +8
- 7. " " " +20
- 8. " " " +16
- 9. " " " +11
- 10. " " " +13
- 11. " " " +13
- 12. " " " +9

**Floor
 2Hp Booster Pump**

- 13. Calf jet el. +12
- 14. Calf jet el. +13
- 15. Calf jet el. +11
- 16. Calf jet el. +12
- 17. Floor jet
- 18. Floor jet
- 19. Floor jet
- 20. Floor jet

JET CONFIGURATIONS



5/16/2013 10:56:48 AM

PRELIMINARY

NESPA ENTERPRISES INC.
 2800 Richter Ave. Suite C Oroville, CA 95966
 Office: (530) 534-9910 Fax: (530) 534-9915
 E-Mail: jim@tiledspas.com Web Site: www.tiledspas.com



If printing as a PDF:

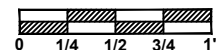
Page Scaling:

DWG NAME

RAGGED POINT

SCALE

3/8" = 1"



DWG TYPE

JETS

DATE

5/16/2013

SHEET

PAGE 2 OF 8

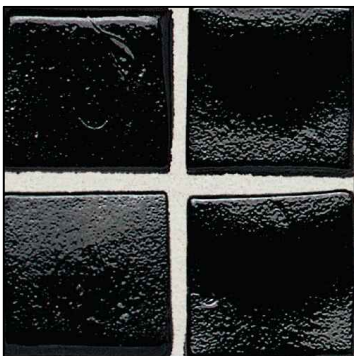
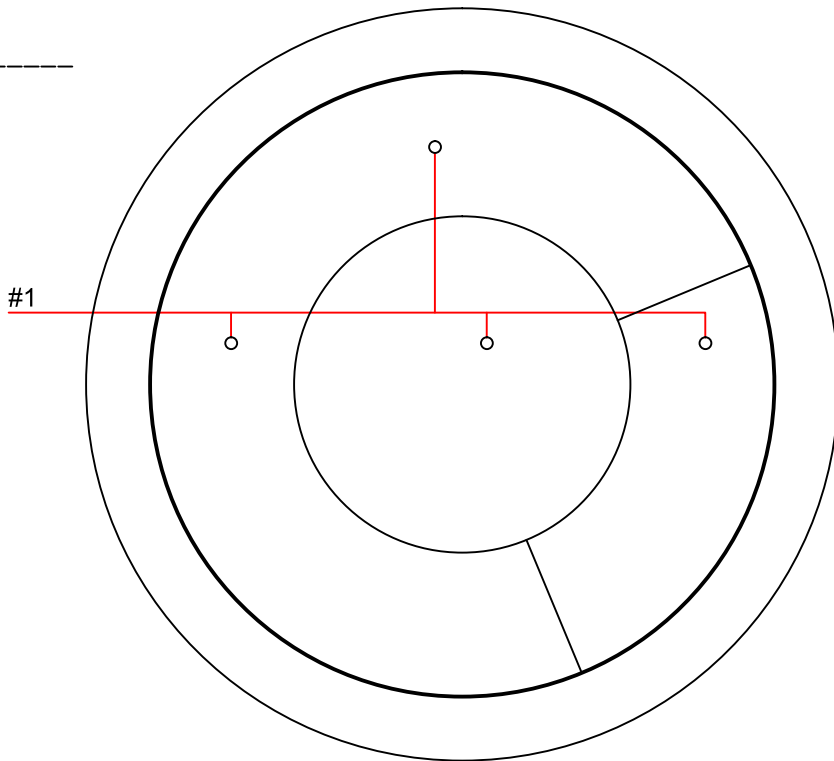
DalTile - Sonterra - SR-62 - Black - 1" X 1"

- #1 - FIELD TILE: _____
- #2 - WATERLINE (optional): _____
- #3 - BENCH & STEP EDGES (optional): _____
- #4 - TILED LIP (optional): _____

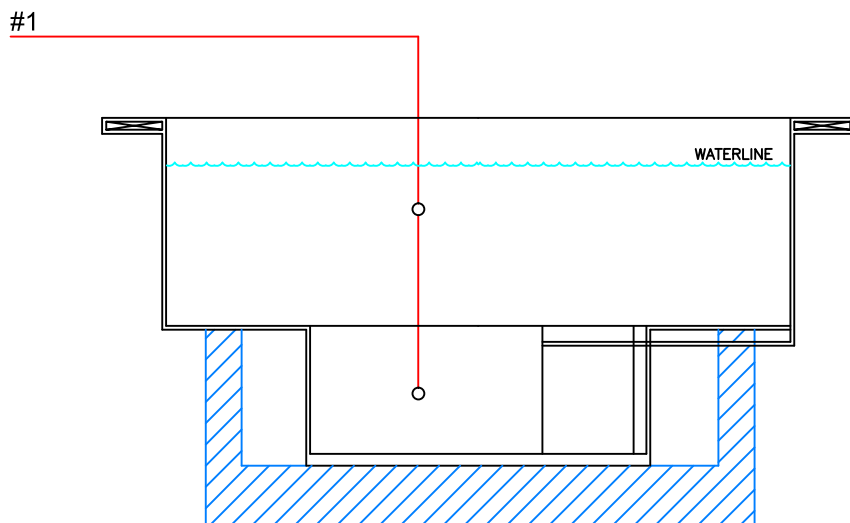
Date: _____

Approval: _____

- #1 - GROUT: _____
- #2 - GROUT: _____
- #3 - GROUT: _____



**DalTile - Sonterra
SR-62 - Black
1" X 1"**



All drawing dimensions supplied by [NESPA ENTERPRISES INC.](http://www.nespa.com) are for reference only. All CAD files were created using AutoCAD file (*.dwg.) and were provided as a service to our customers using AutoCAD. Errors sometimes occur during this process and with software incompatibility upon opening a file. [NESPA ENTERPRISES INC.](http://www.nespa.com) and/or any authorized distributor of our products will not be held responsible for problems arising from files which have been converted and does not warranty the documents against deficiencies or typographical errors of any kind. We recommend that all measurements are verified with actual physical product before any custom fabrication in the field occurs.

5/16/2013 10:56:49 AM

PRELIMINARY

ALL DIMENSIONS SUBJECT TO 1/4" TOLERANCES

NESPA ENTERPRISES INC.
2800 Richter Ave. Suite C Oroville, CA 95966
Office: (530) 534-9910 Fax: (530) 534-9915
E-Mail: jim@tiledspas.com Web Site: www.tiledspas.com



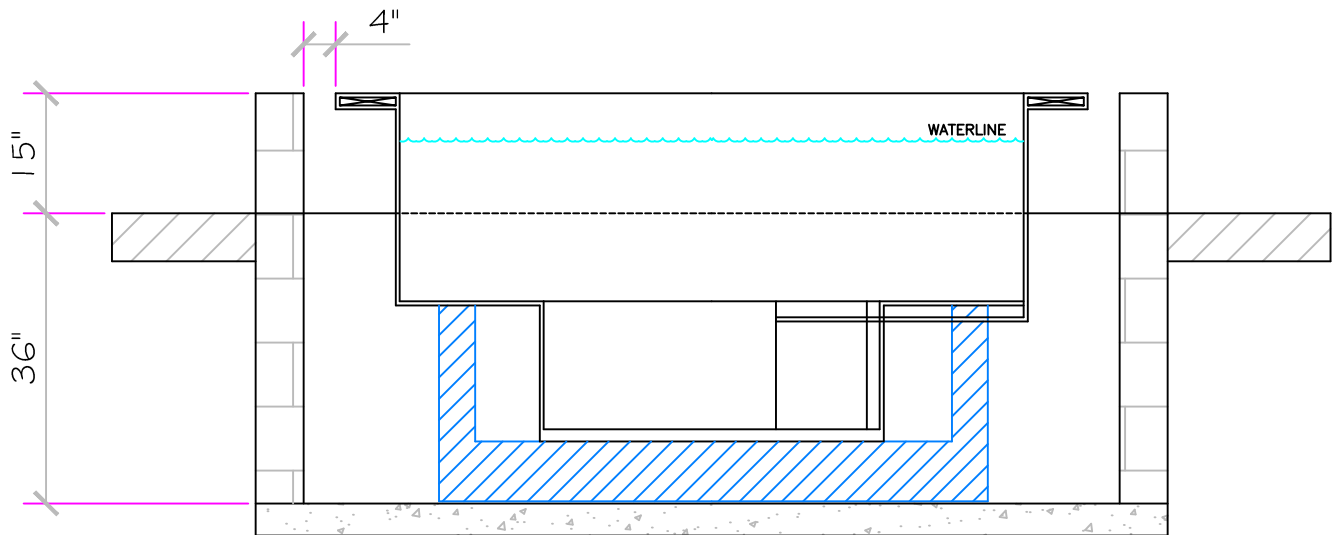
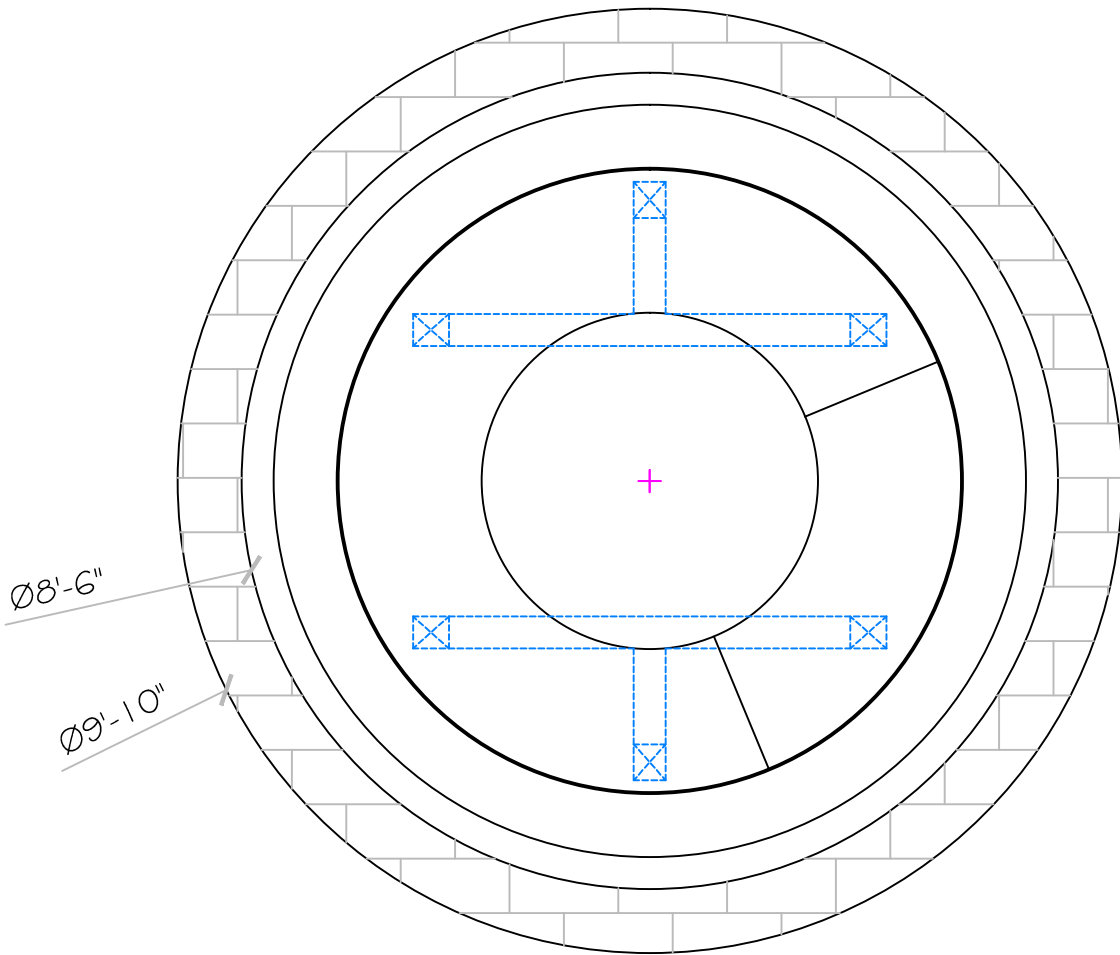
If printing as a PDF:
Page Scaling:
DWG NAME: **RAGGED POINT**

SCALE
1/2" = 1'

DATE
5/14/2013

DWG TYPE
Tile
SHEET
PAGE 3 OF 8

These drawings, concepts, and details contained herein are the original proprietary designs of [NESPA ENTERPRISES INC.](http://www.nespa.com), developed over many years of experience in the industry and as such are protected by the copyright laws of the United States Government. Reproduction of any of the above without written permission to do so by [NESPA ENTERPRISES INC.](http://www.nespa.com), is illegal.



All drawing dimensions supplied by **NESPA ENTERPRISES INC.** are for reference only. All CAD files were created using AutoCAD file (*.dwg.) and were provided as a service to our customers using AutoCAD. Errors sometimes occur during this process and with software incompatibility upon opening a file. **NESPA ENTERPRISES INC.** and/or any authorized distributor of our products will not be held responsible for problems arising from files which have been converted and does not warrant the documents against deficiencies or typographical errors of any kind. We recommend that all measurements are verified with actual physical product before any custom fabrication in the field occurs.

5/16/2013 10:56:49 AM

PRELIMINARY

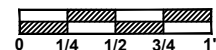
ALL DIMENSIONS SUBJECT TO 1/4" TOLERANCES

NESPA ENTERPRISES INC.
 2800 Richter Ave. Suite C Oroville, CA 95966
 Office: (530) 534-9910 Fax: (530) 534-9915
 E-Mail: jim@tiledspas.com Web Site: www.tiledspas.com



If printing as a PDF:
 Page Scaling:

SCALE
 1/2" = 1'



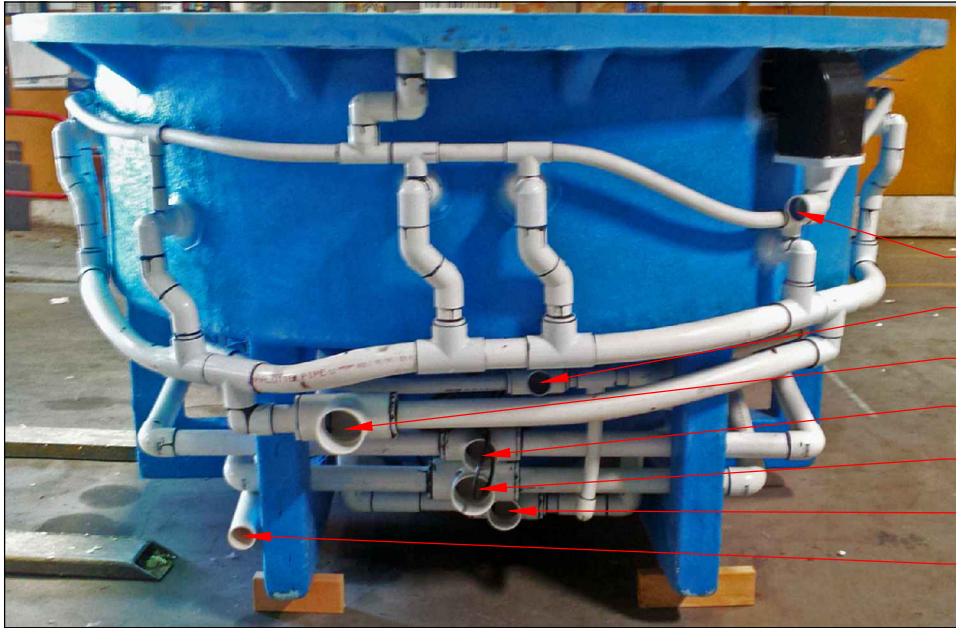
DWG TYPE
 Spa Layout

DWG NAME
 RAGGED POINT

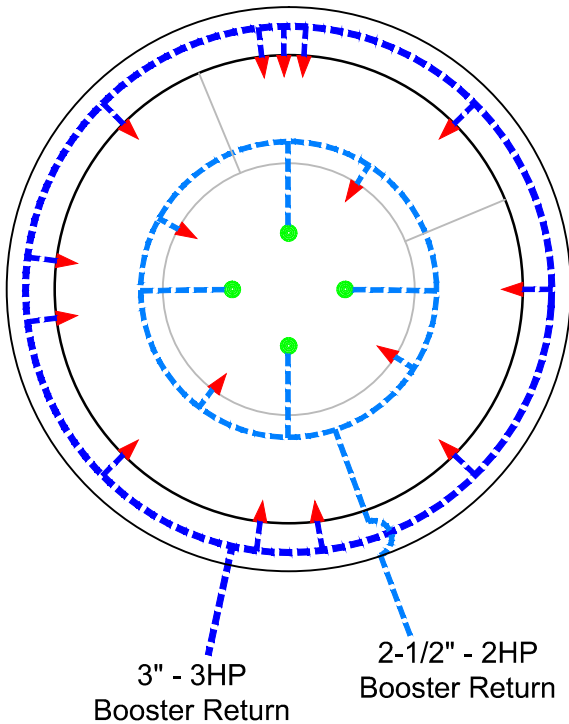
DATE
 5/14/2013

SHEET
 PAGE 4 OF 8

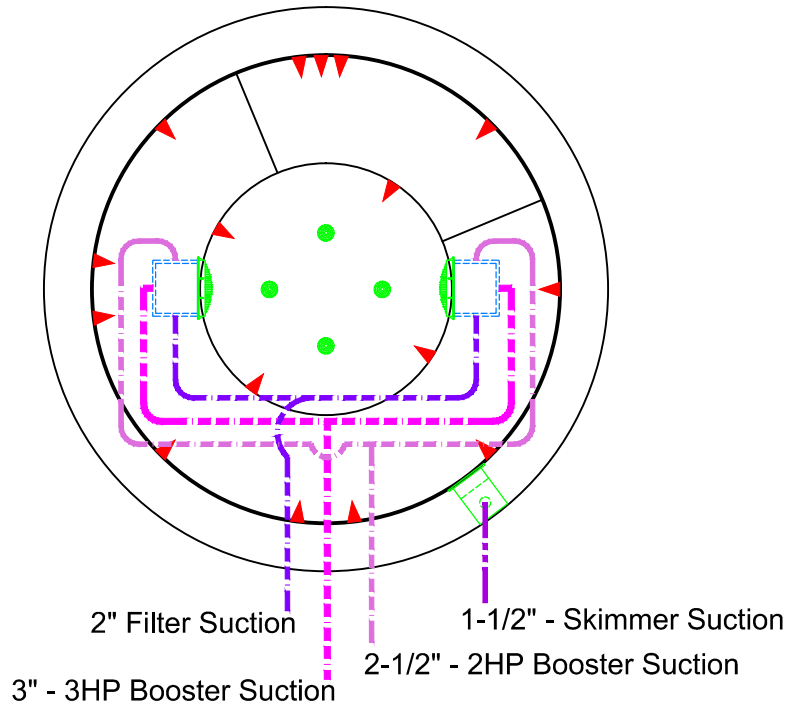
These drawings, concepts, and details contained herein are the original proprietary designs of **NESPA ENTERPRISES INC.**, developed over many years of experience in the industry and as such are protected by the copyright laws of the United States Government. Reproduction of any of the above without written permission to do so by **NESPA ENTERPRISES INC.**, is illegal.



- 1-1/2" Skimmer Suction
- 2-1/2" Filter Return
- 3" - 3HP Booster Return
- 2-1/2" - 2HP Booster Suction
- 3" - 3HP Booster Suction
- 2-1/2" - 2HP Booster Return
- 2" Filter Suction



**RETURN
PLUMBING**



**SUCTION
PLUMBING**

5/16/2013 10:56:50 AM

PRELIMINARY

ALL DIMENSIONS SUBJECT TO 1/4" TOLERANCES

NESPA ENTERPRISES INC.

2800 Richter Ave. Suite C Oroville, CA 95966

Office: (530) 534-9910

Fax: (530) 534-9915

E-Mail: jim@tiledspas.com Web Site: www.tiledspas.com



If printing as a PDF:

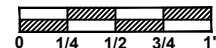
Page Scaling:

DWG NAME

RAGGED POINT

SCALE

3/8" = 1"



DATE

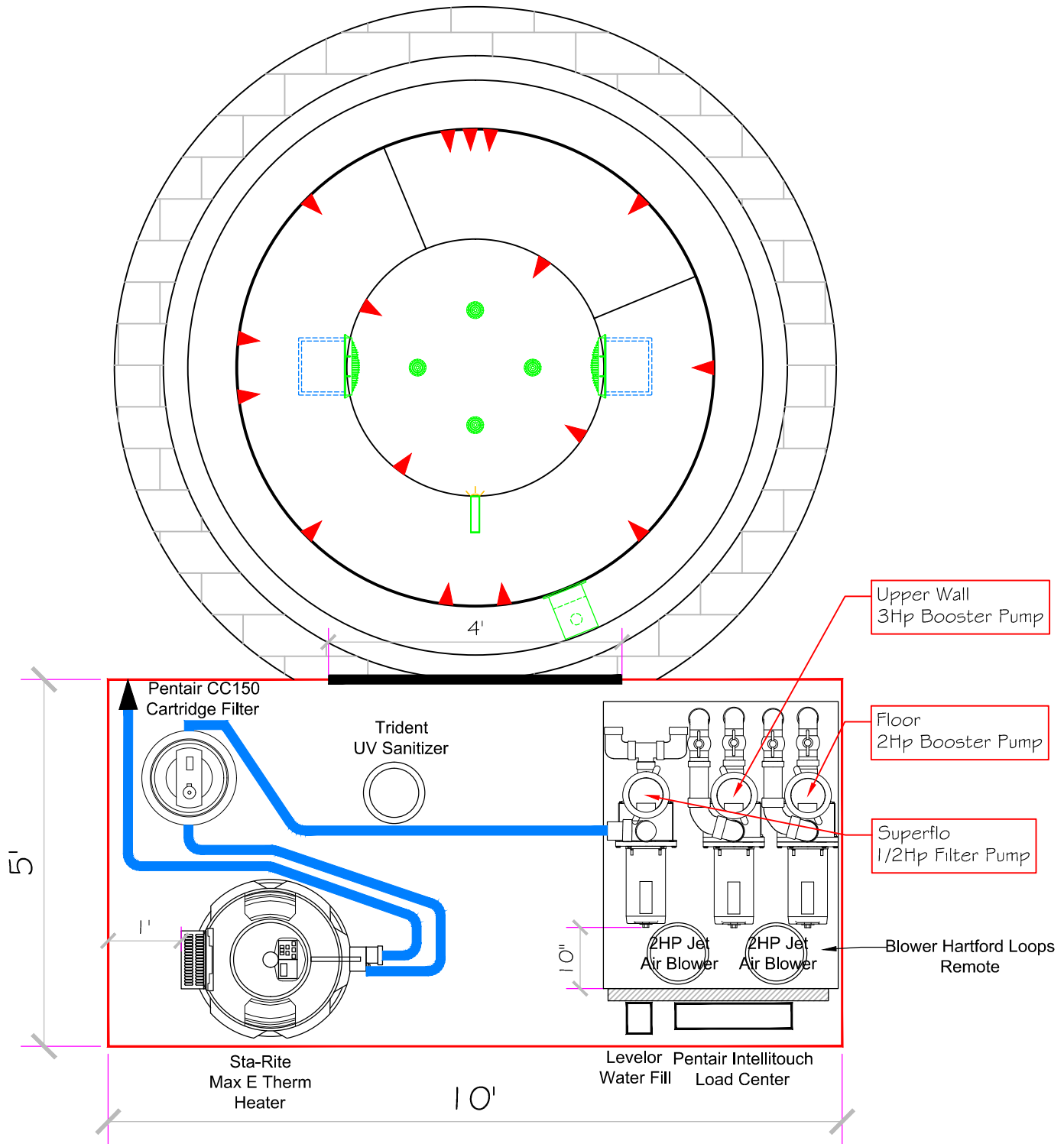
5/14/2013

DWG TYPE

Spa Plumbing

SHEET

PAGE 5 OF 8



All drawing dimensions supplied by **NESPA ENTERPRISES INC.** are for reference only. All CAD files were created using AutoCAD file (*.dwg.) and were provided as a service to our customers using AutoCAD. Errors sometimes occur during this process and with software incompatibility upon opening a file. **NESPA ENTERPRISES INC.** and/or any authorized distributor of our products will not be held responsible for problems arising from files which have been converted and does not warrant the documents against deficiencies or typographical errors of any kind. We recommend that all measurements are verified with actual physical product before any custom fabrication in the field occurs.

5/16/2013 10:56:51 AM

PRELIMINARY

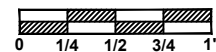
ALL DIMENSIONS SUBJECT TO 1/4" TOLERANCES

NESPA ENTERPRISES INC.
 2800 Richter Ave. Suite C Oroville, CA 95966
 Office: (530) 534-9910 Fax: (530) 534-9915
 E-Mail: jim@tiledspas.com Web Site: www.tiledspas.com



If printing as a PDF:
 Page Scaling:
 DWG NAME: RAGGED POINT

SCALE
 1/2" = 1'

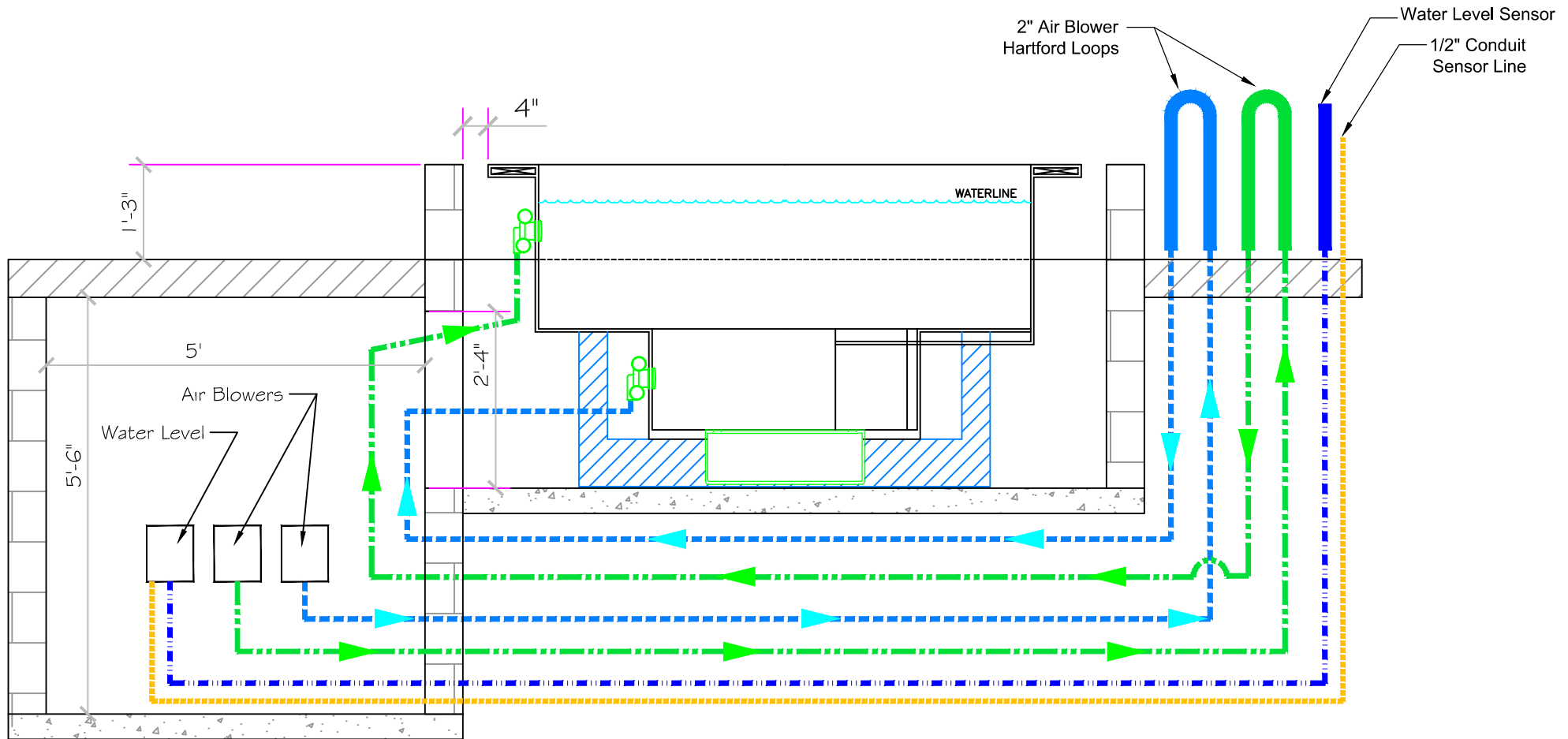


DWG TYPE
 EQ Layout

DATE
 5/16/2013

SHEET
 PAGE 6 OF 8

These drawings, concepts, and details contained herein are the original proprietary designs of **NESPA ENTERPRISES INC.**, developed over many years of experience in the industry and as such are protected by the copyright laws of the United States Government. Reproduction of any of the above without written permission to do so by **NESPA ENTERPRISES INC.**, is illegal.



5/16/2013 10:56:52 AM

All drawing dimensions supplied by **NESPA ENTERPRISES INC.** are for reference only. All CAD files were created using AutoCAD file (*.dwg.) and were provided as a service to our customers using AutoCAD. Errors sometimes occur during this process and with software incompatibility upon opening a file. **NESPA ENTERPRISES INC.** and/or any authorized distributor of our products will not be held responsible for problems arising from files which have been converted and does not warrant the documents against deficiencies or typographical errors of any kind. We recommend that all measurements are verified with actual physical product before any custom fabrication in the field occurs.

PRELIMINARY

ALL DIMENSIONS SUBJECT TO 1/4" TOLERANCES

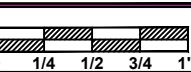
These drawings, concepts, and details contained herein are the original proprietary designs of **NESPA ENTERPRISES INC.**, developed over many years of experience in the industry and as such are protected by the copyright laws of the United States Government. Reproduction of any of the above without written permission to do so by **NESPA ENTERPRISES INC.**, is illegal.

NESPA ENTERPRISES INC.
 2800 Richter Ave. Ste. C Oroville, CA 95966
 Office: (530) 534-9910 Fax: (530) 534-9915
 E-Mail: jim@tiledspas.com Web Site: www.tiledspas.com



If printing as a PDF:
 Page Scaling: None

SCALE
 1/2" = 1'

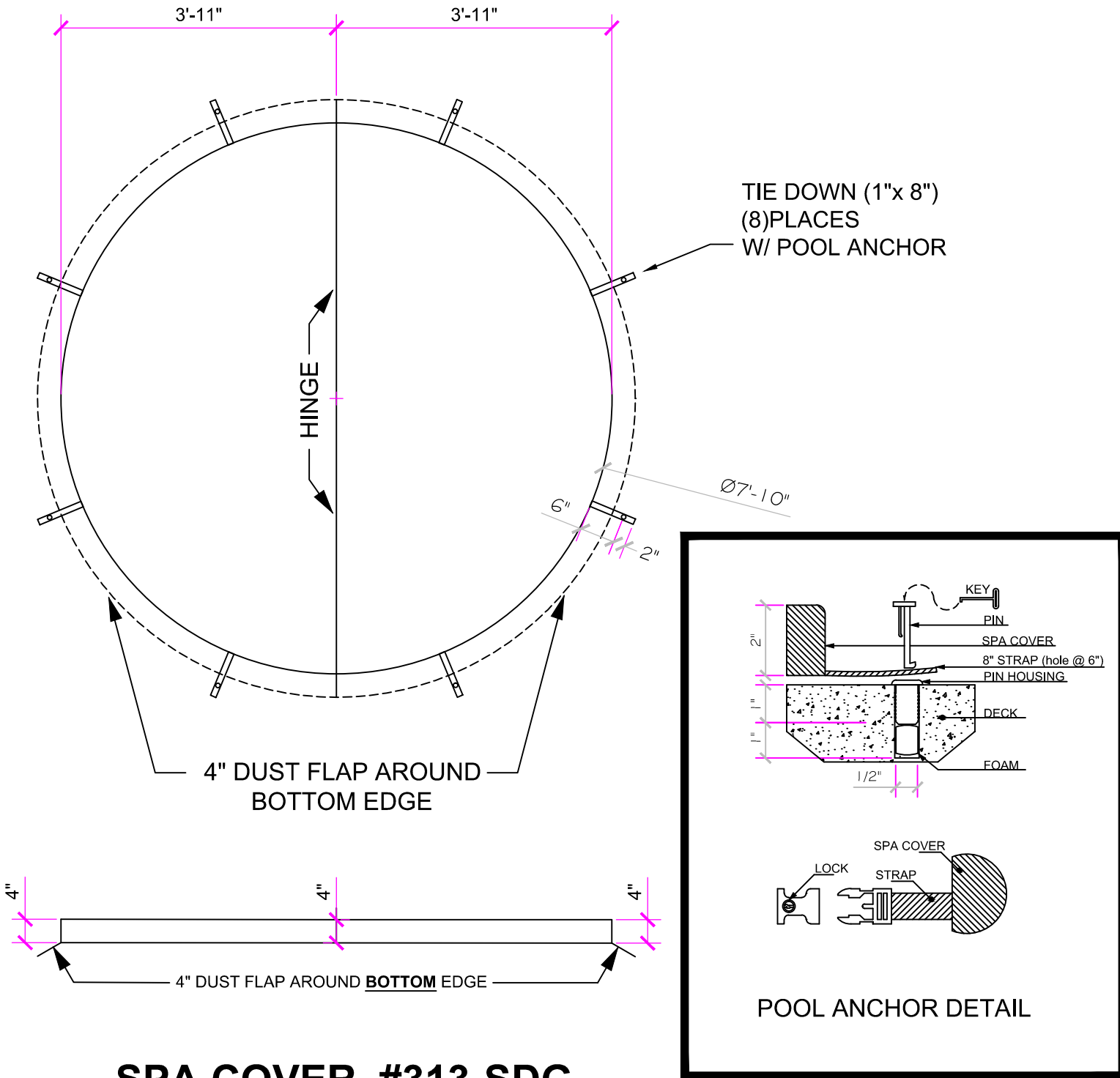


DWG TYPE
 EQ Layout (2)

DWG NAME
 RAGGED POINT

DATE
 5/16/2013

SHEET
 PAGE 7 OF 8



SPA COVER #313-SDG
GREY - 1 PC.
1.5 Lbs Foam
 For: Ragged Point

5/16/2013 10:56:52 AM

PRELIMINARY

ALL DIMENSIONS SUBJECT TO 1/4" TOLERANCES

NESPA ENTERPRISES INC.

2800 Richter Ave. Suite C Oroville, CA 95966

Office: (530) 534-9910

Fax: (530) 534-9915

E-Mail: jim@tiledspas.com Web Site: www.tiledspas.com



If printing as a PDF:

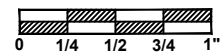
Page Scaling:

DWG NAME

RAGGED POINT

SCALE

1/2" = 1'



DATE

5/14/2013

DWG TYPE

Cover

SHEET

PAGE 8 OF 8