



NESPA ENTERPRISES INC.

2800 Richter Ave. Suite C
 Oroville, CA 95966
 Office: (530) 534-9910
 Fax: (530) 534-9915
 E-Mail: sales@tiledspas.com
 Web Site: www.tiledspas.com

12' LEGACY

SPA DETAIL

ALL DIMENSIONS SUBJECT TO 1/4" TOLERANCES

SCALE: 3/8" = 1'-0"

DATE: 3/1/2006

JOB: STADIUM

DR#: WMS-STD- SD07

SKID SUPPORT STRUCTURE* BONDED TO SPA

*SKIDS SUPPLIED BY NESPA

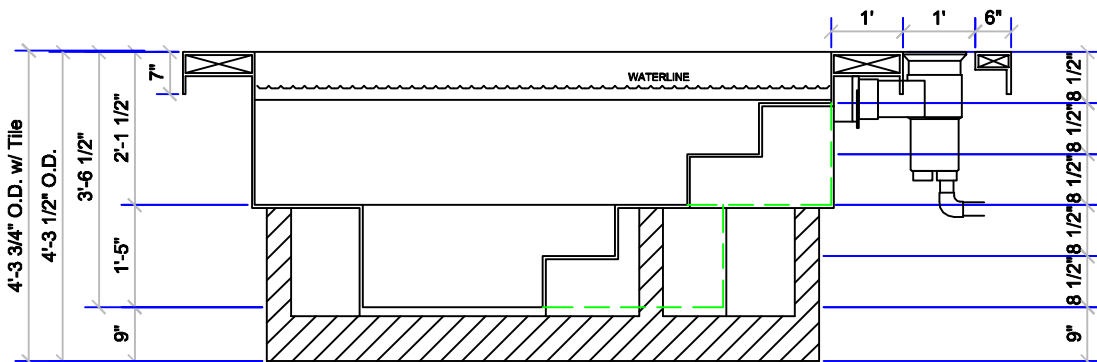
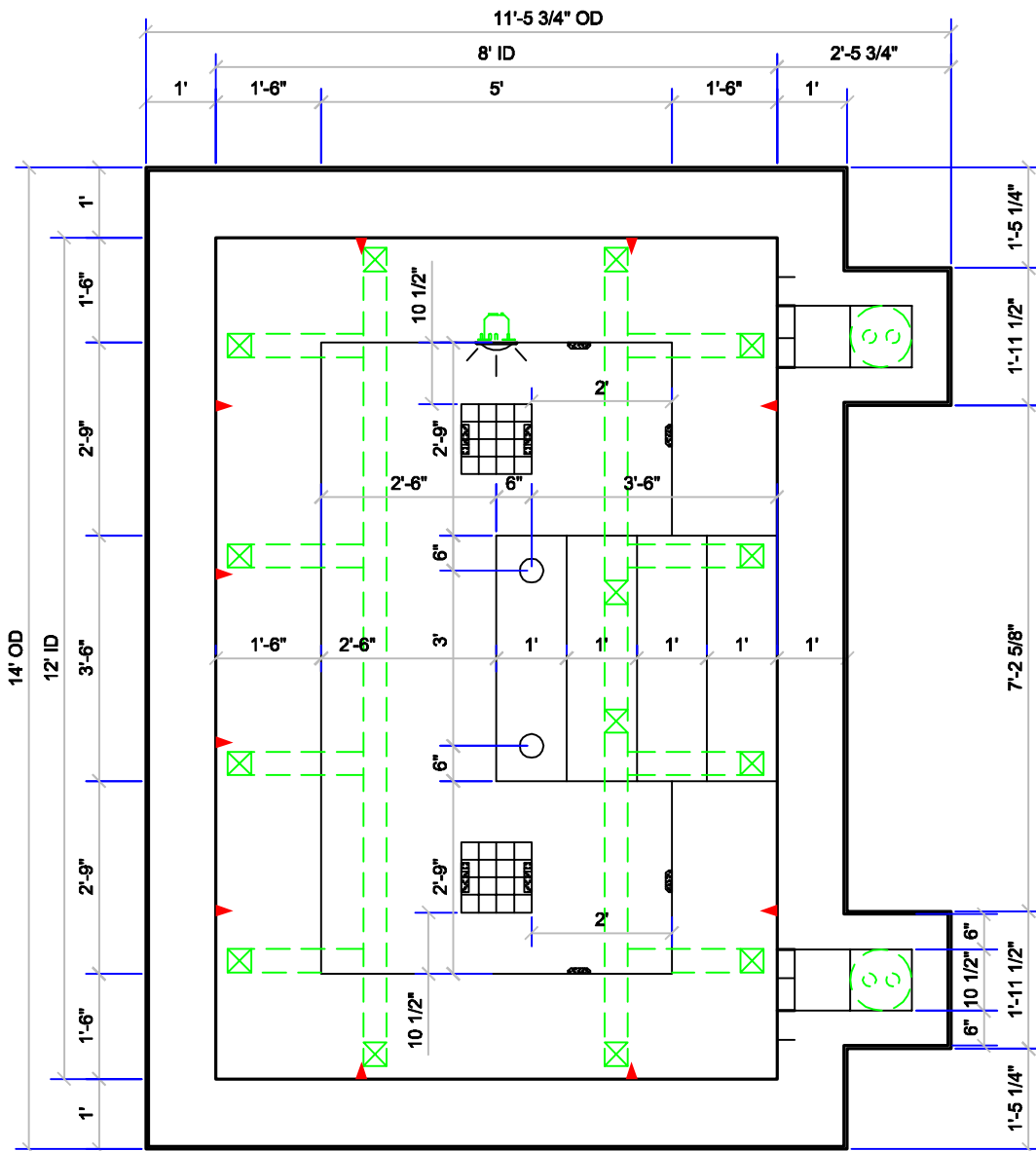
MAIN DRAIN

12" X 12"

LIGHT NICH

HAYWARD SKIMMER NSF APPROVED

SPECIFICATIONS
 DRY WEIGHT: 2000 lbs.
 WET WEIGHT: 14100 lbs.
 WATER: 1450 GALLONS
 SURFACE AREA: 96 sq.ft.
 IAPMO#: 1138
 FDA#: 2030305



These drawings, concepts, and details contained herein are the original proprietary designs of NESPA ENTERPRISES, developed over many years of experience in the pool and spa industry and as such are protected by the copyright laws of the United States Government. Reproduction of any of the above without written permission to do so by NESPA ENTERPRISES, is illegal.



NESPA ENTERPRISES INC.

2800 Richter Ave. Suite C
Oroville, CA 95966
Office: (530) 534-9910
Fax: (530) 534-9915
E-Mail: sales@tiledspas.com
Web Site: www.tiledspas.com

12' LEGACY

SPA DETAIL

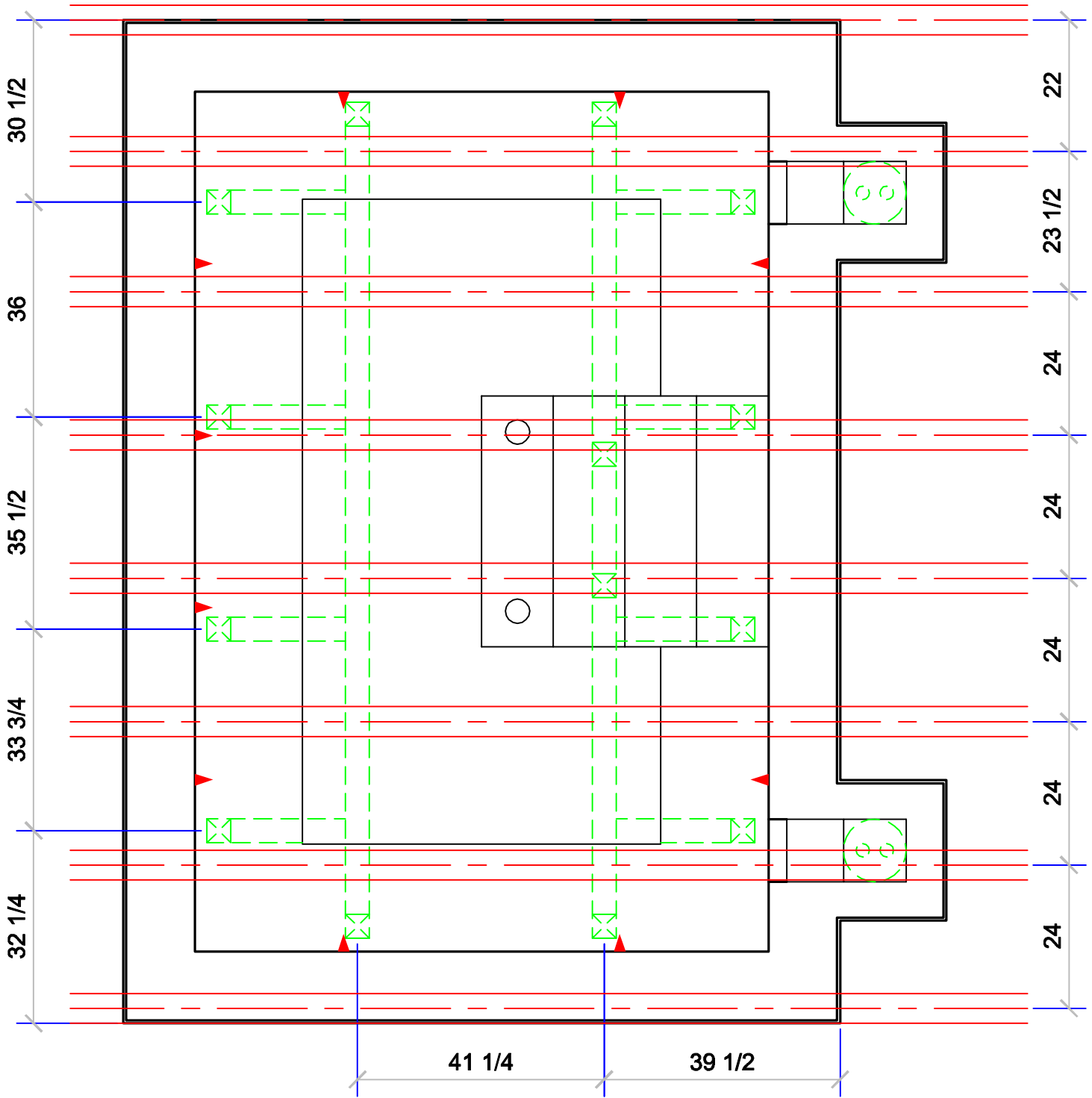
SCALE: 1/2" = 1'-0"

DATE: 3/17/2006

JOB: STADIUM

DR#:WMS-SKID_STEEL

ALL DIMENSIONS SUBJECT TO 1/4" TOLERANCES



These drawings, concepts, and details contained herein are the original proprietary designs of NESPA ENTERPRISES, developed over many years of experience in the pool and spa industry and as such are protected by the copyright laws of the United States Government. Reproduction of any of the above without written permission to do so by NESPA ENTERPRISES, is illegal.



NESPA ENTERPRISES INC.

2800 Richter Ave. Suite C
Oroville, CA 95966
Office: (530) 534-9910
Fax: (530) 534-9915
E-Mail: sales@tiledspas.com
Web Site: www.tiledspas.com

12' LEGACY

TILE DETAIL

SCALE: 3/8" = 1'-0"

DATE: 3/1/2006

JOB: STADIUM

DR#:WMS-STD- TD07

ALL DIMENSIONS SUBJECT TO 1/4" TOLERANCES

Tile Selection Instructions

MATERIALS:

DAL TILE, KEYSTONE SERIES, 2X2 NONGLAZED MOSAIC.
TILE TO BE SLIP RESISTANT.

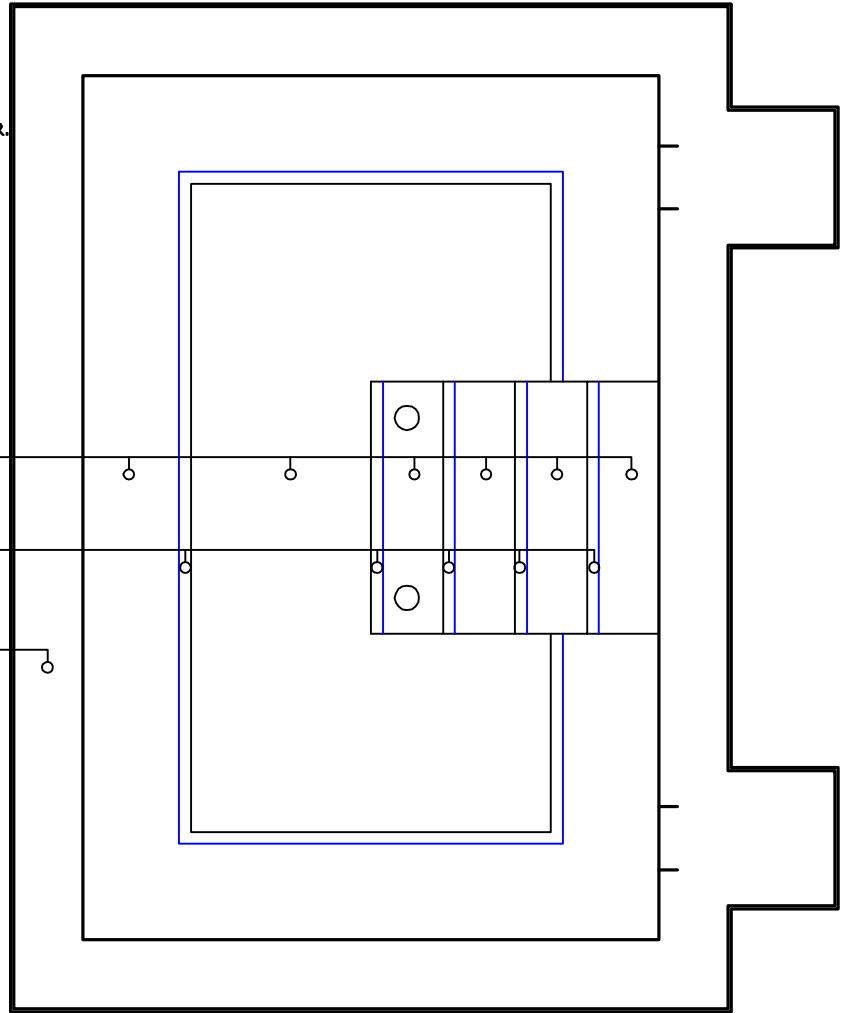
LOCATIONS:

1. SELECT DAL 2x2 TILE FOR GENERAL FIELD TILE. USUALLY LIGHT IN COLOR.
2. SELECT DAL TILE FOR WATERLINE (TOP 6" OF VERTICAL WALL BELOW LIP). TILE CAN BE SAME AS STEP & BENCH EDGES, FIELD AND OR OTHER.
3. SELECT, DARKER THAN FIELD, DAL 2x2 TILE FOR STEP & BENCH EDGES.
4. SELECT TILE FOR HORIZONTAL LIP EDGE (NOTE:IF C701 COPING TILE IS REQUESTED (Special Order) A 6-8 WEEK LEAD TIME WILL BE REQUIRED).

#1 Dal DK01 "Blue Blend" 1X1

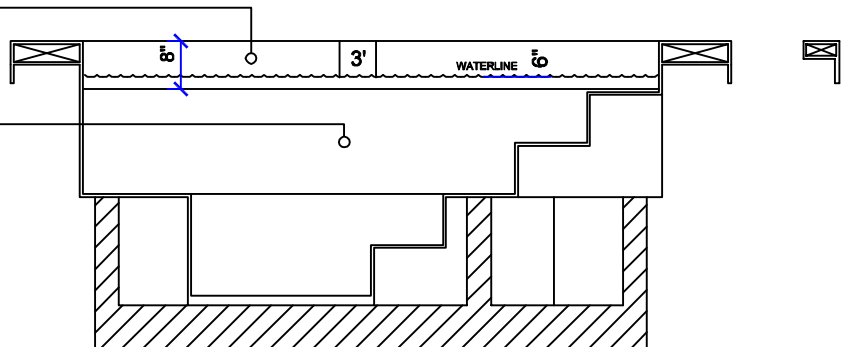
#3 Dal D469 "Galaxy" 2X2 Bullnose

#4 Dal D469 "Galaxy" 2X2 Bullnose to outside



#2 Dal 9469 "Galaxy Gloss" 2X2 8" Wide Band

#1 Dal DK01 "Blue Blend" 1X1





NESPA ENTERPRISES INC.

2800 Richter Ave. Suite C
Oroville, CA 95966
Office: (530) 534-9910
Fax: (530) 534-9915
E-Mail: sales@tiledspas.com
Web Site: www.tiledspas.com

12' LEGACY

FABRICATION DETAIL

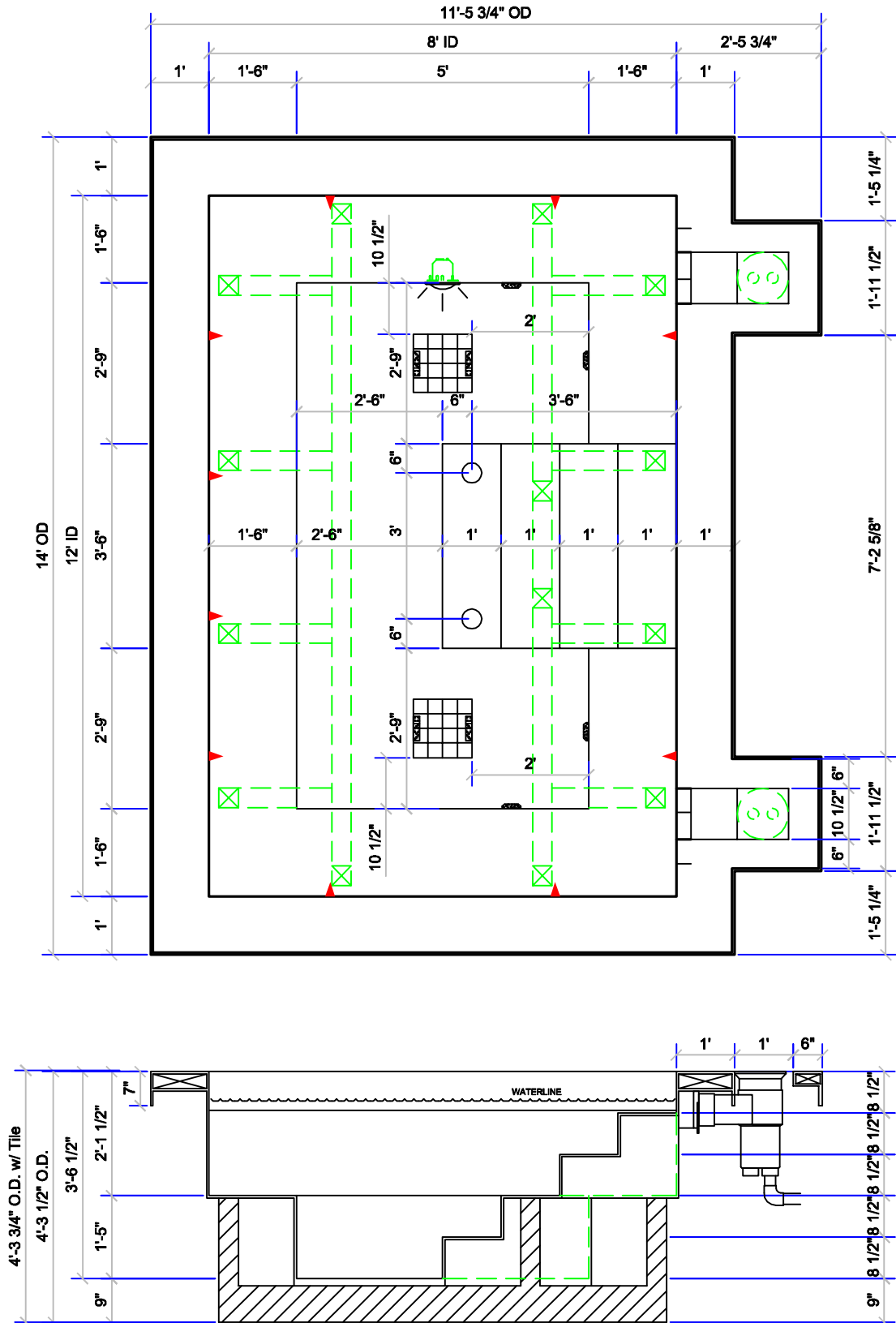
ALL DIMENSIONS SUBJECT TO 1/4" TOLERANCES

SCALE: 3/8" = 1'-0"

DATE: 3/1/2006

JOB: STADIUM

DR#: WMS-STD- FAB01



These drawings, concepts, and details contained herein are the original proprietary designs of NESPA ENTERPRISES, developed over many years of experience in the pool and spa industry and as such are protected by the copyright laws of the United States Government. Reproduction of any of the above without written permission to do so by NESPA ENTERPRISES, is illegal.



NESPA ENTERPRISES INC.

2800 Richter Ave. Suite C
Oroville, CA 95966
Office: (530) 534-9910
Fax: (530) 534-9915
E-Mail: sales@tiledspas.com
Web Site: www.tiledspas.com

12' LEGACY HANDRAIL DETAIL

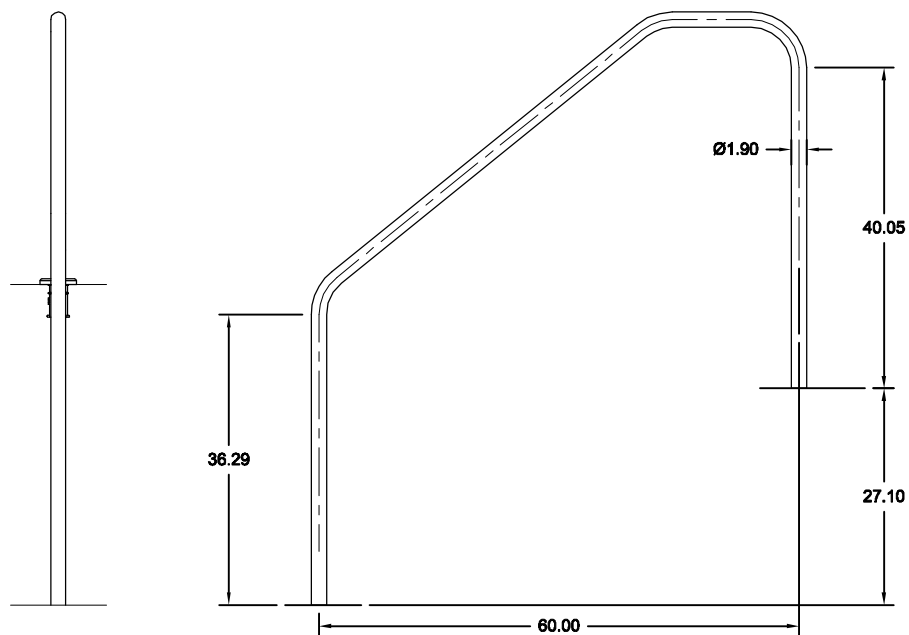
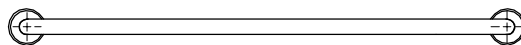
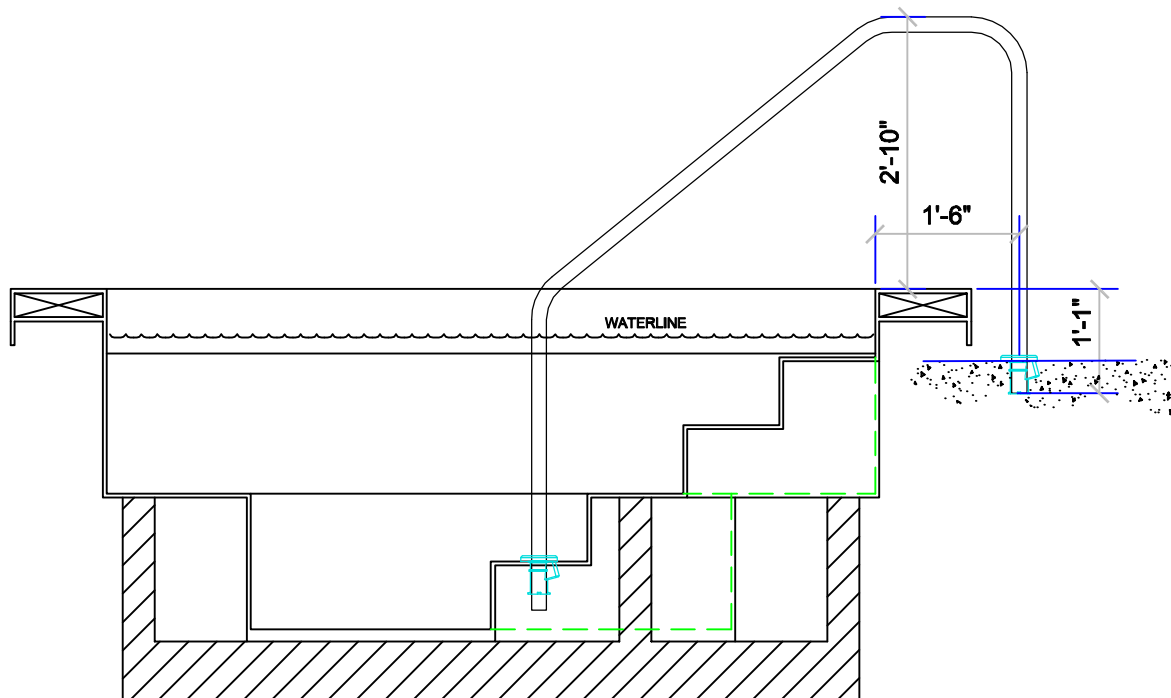
ALL DIMENSIONS SUBJECT TO 1/4" TOLERANCES

SCALE: 1/2" = 1'-0"

DATE: 8/15/2006

JOB: STADIUM

DR#: Rail Detail



These drawings, concepts, and details contained herein are the original proprietary designs of NESPA ENTERPRISES, developed over many years of experience in the pool and spa industry and as such are protected by the copyright laws of the United States Government. Reproduction of any of the above without written permission to do so by NESPA ENTERPRISES, is illegal.



NESPA ENTERPRISES INC.

2800 Richter Ave. Suite C
Oroville, CA 95966
Office: (530) 534-9910 Fax: (530) 534-9915
E-Mail: sales@tiledspas.com
Web Site: www.tiledspas.com

13' x 32' POOL

POOL DETAIL

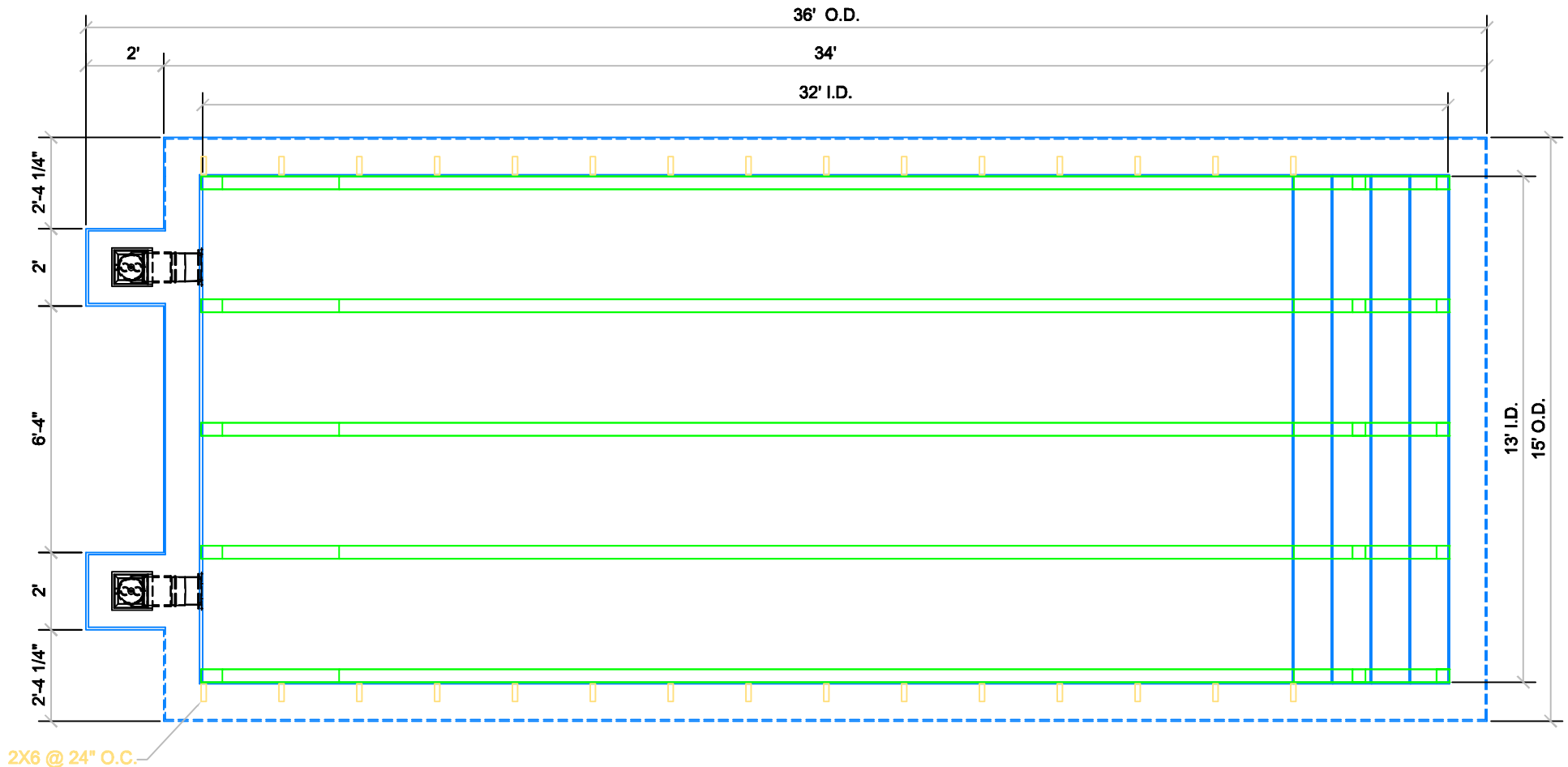
ALL DIMENSIONS SUBJECT TO 1/4" TOLERANCES

SCALE: 1/4" = 1'

DATE: 02/17/06

JOB: STADIUM

DR#: WMS-STD-PD04





NESPA ENTERPRISES INC.

2800 Richter Ave. Suite C
Oroville, CA 95966
Office: (530) 534-9910 Fax: (530) 534-9915
E-Mail: sales@tiledspas.com
Web Site: www.tiledspas.com

13' x 32' POOL POOL/VAULT DETAIL

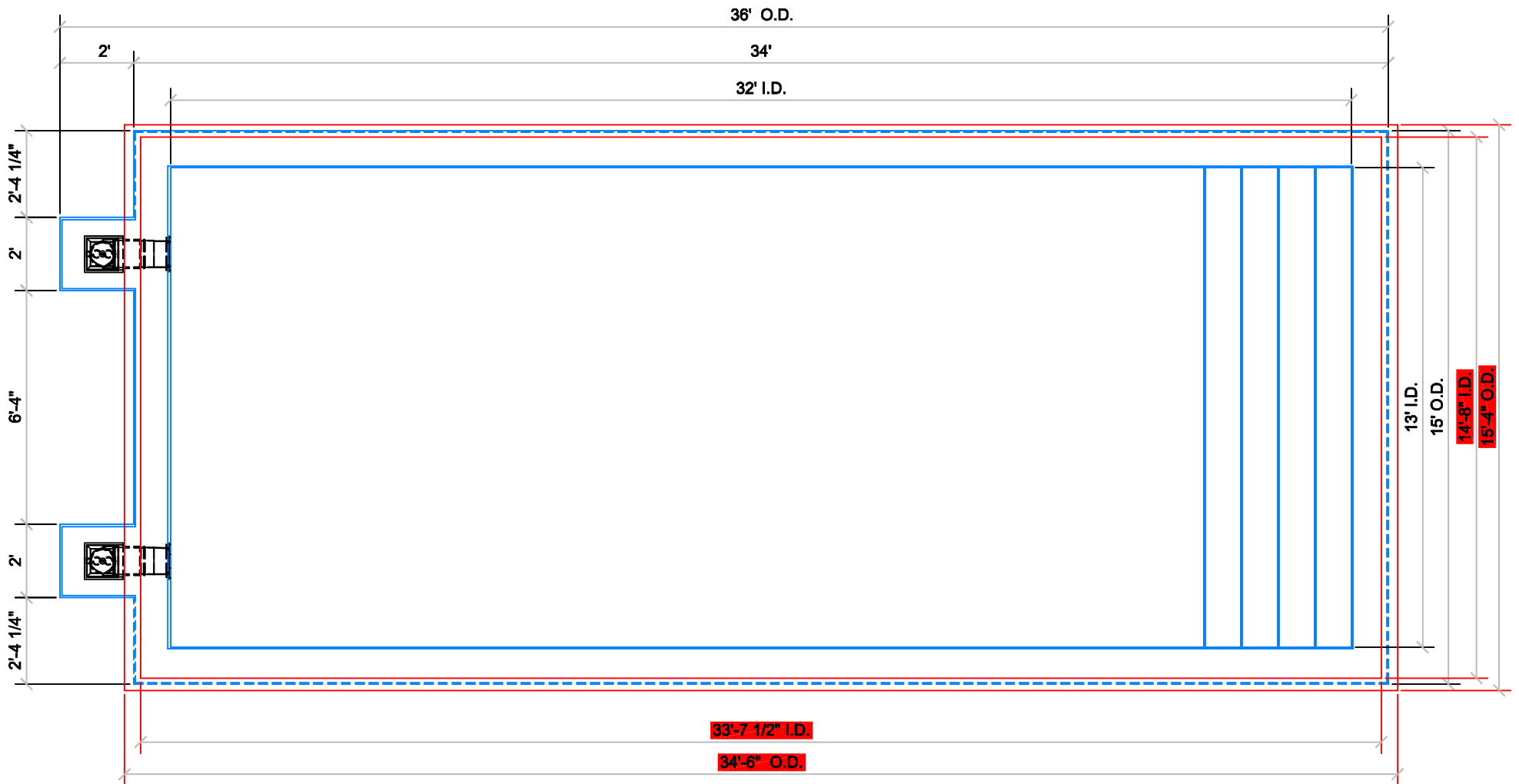
ALL DIMENSIONS SUBJECT TO 1/4" TOLERANCES

SCALE: 1/4" = 1'

DATE: 03/17/06

JOB: STADIUM

DR#: WMS-STD-PVLTD02





NESPA ENTERPRISES INC.

2800 Richter Ave. Suite C
Oroville, CA 95966
Office: (530) 534-9910 Fax: (530) 534-9915
E-Mail: sales@tiledspas.com
Web Site: www.tiledspas.com

13' x 32' POOL

POOL RENDER

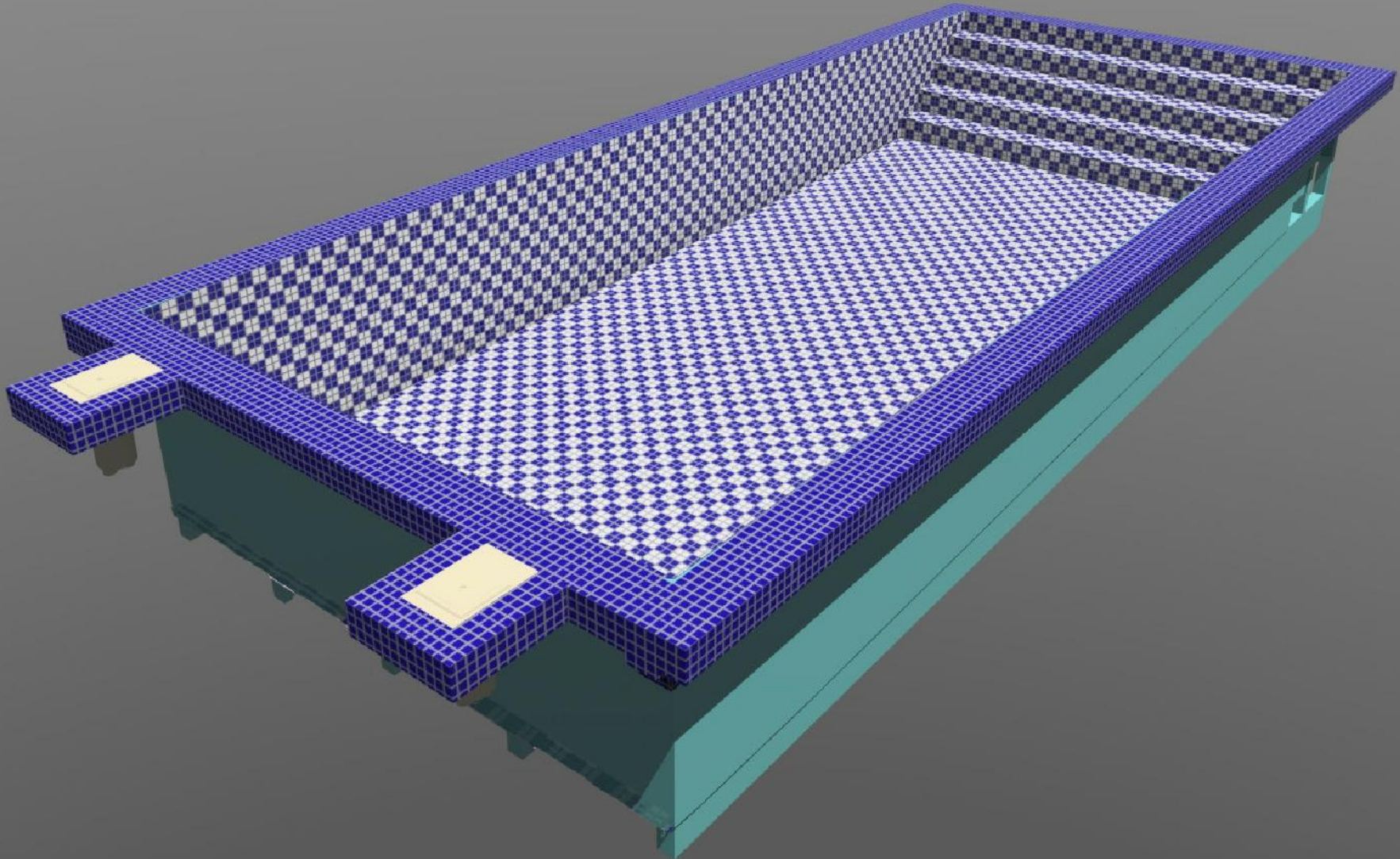
ALL DIMENSIONS SUBJECT TO 1/4" TOLERANCES

SCALE: N/A

DATE: 03/22/06

JOB: STADIUM

DR#: WMS-STD-RENDER





NESPA ENTERPRISES INC.

2800 Richter Ave. Suite C
Oroville, CA 95966
Office: (530) 534-9910 Fax: (530) 534-9915
E-Mail: sales@tiledspas.com
Web Site: www.tiledspas.com

13' x 32' POOL

Step Profile

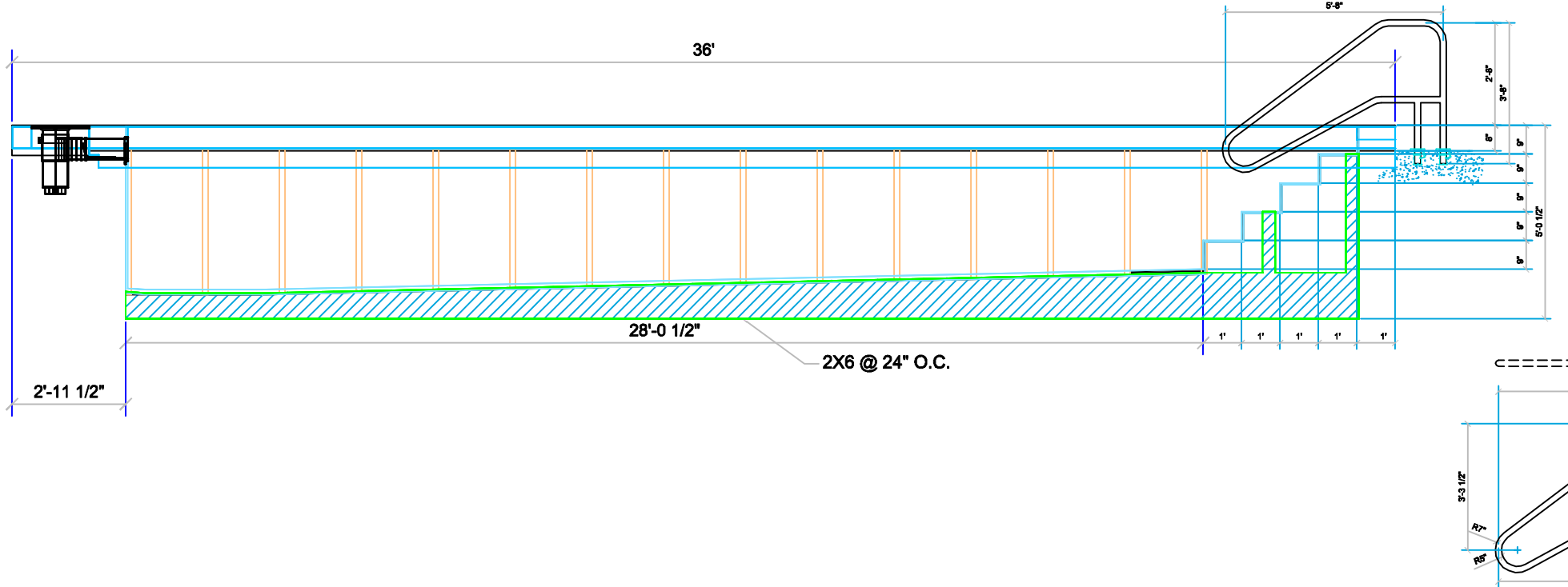
ALL DIMENSIONS SUBJECT TO 1/4" TOLERANCES

SCALE: 1/2" = 1'-0"

DATE: 02/17/06

JOB: STADIUM

DR#: WMS-STD-PLD05





NESPA ENTERPRISES INC.

2800 Richter Ave. Suite C
 Oroville, CA 95966
 Office: (530) 534-9910 Fax: (530) 534-9915
 E-Mail: sales@tiledspas.com
 Web Site: www.tiledspas.com

13' x 32' POOL

RAIL DETAIL Profile

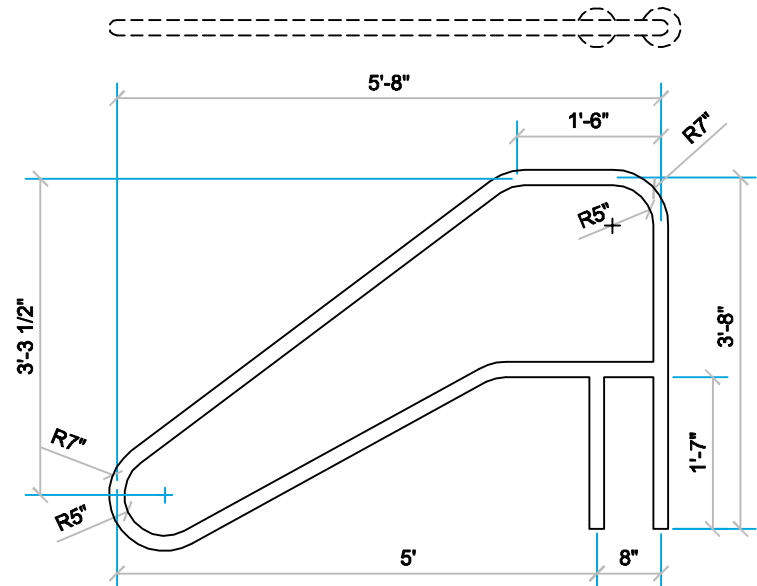
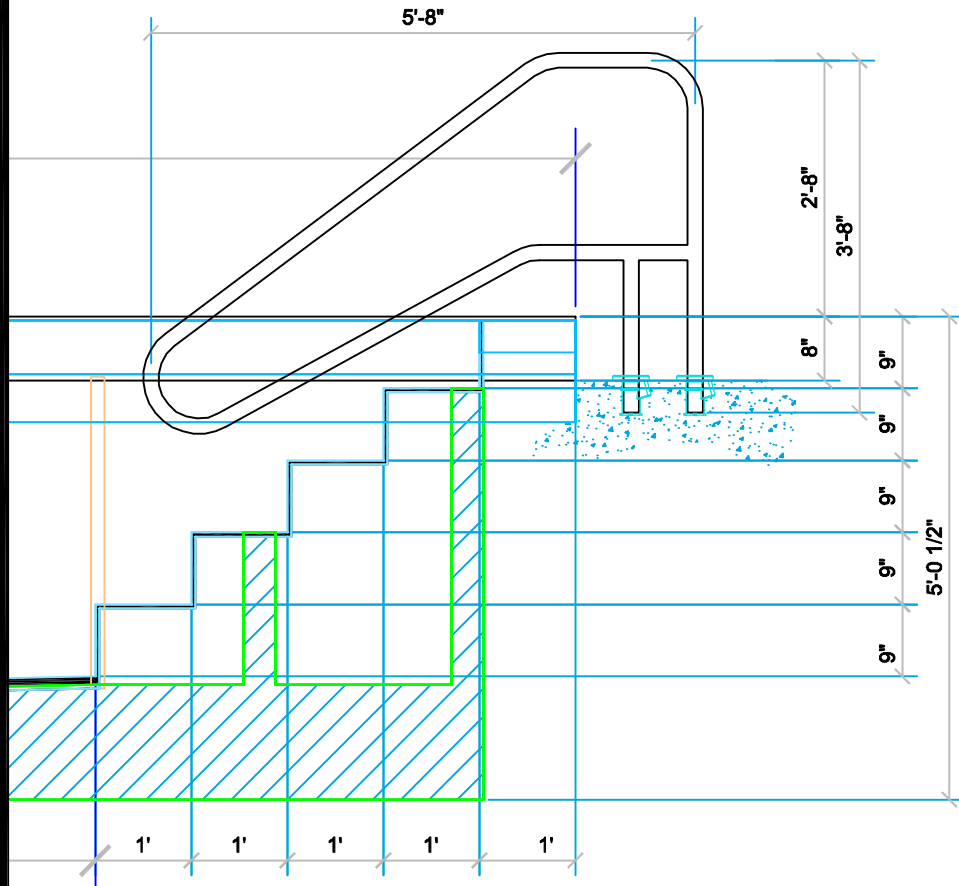
ALL DIMENSIONS SUBJECT TO 1/4" TOLERANCES

SCALE: 1/2" = 1'-0"

DATE: 08/15/06

JOB: STADIUM

DR#: WMS-STD-RD04





NESPA ENTERPRISES INC.

2800 Richter Ave. Suite C
 Oroville, CA 95966
 Office: (530) 534-9910 Fax: (530) 534-9915
 E-Mail: sales@tiledspas.com
 Web Site: www.tiledspas.com

13' x 32' POOL

STEEL DETAIL

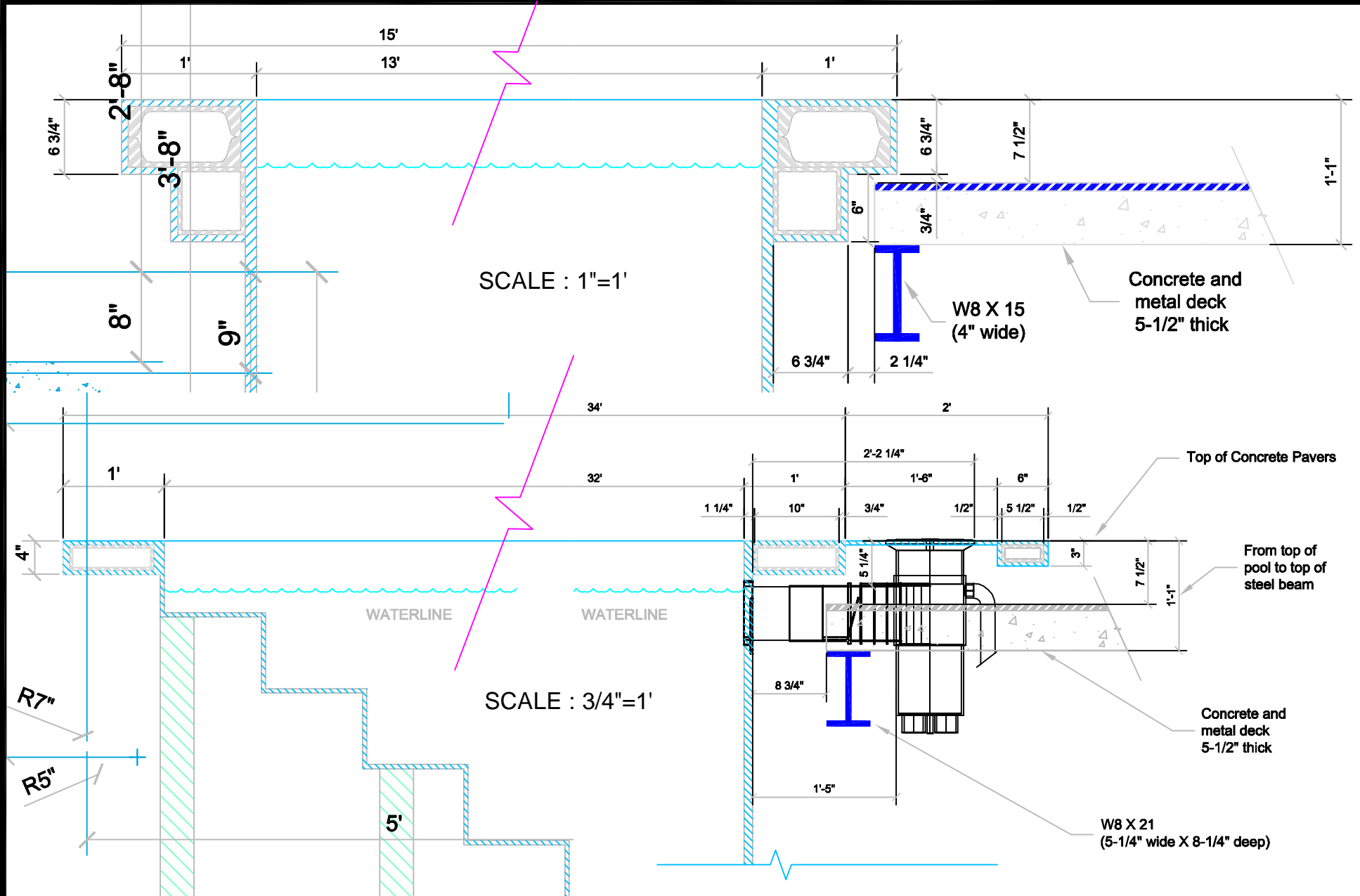
ALL DIMENSIONS SUBJECT TO 1/4" TOLERANCES

SCALE: AS NOTED

DATE: 03/17/06

JOB: STADIUM

DR#: WMS-STD-STLD09



These drawings, concepts, and details contained herein are the original proprietary designs of NESPA ENTERPRISES, developed over many years of experience in the pool and spa industry and as such are protected by the copyright laws of the United States Government. Reproduction of any of the above without written permission to do so by NESPA ENTERPRISES, is illegal.



NESPA ENTERPRISES INC.

2800 Richter Ave. Suite C
Oroville, CA 95966
Office: (530) 534-9910 Fax: (530) 534-9915
E-Mail: sales@tiledspas.com
Web Site: www.tiledspas.com

13' x 32' POOL

STEEL DETAIL

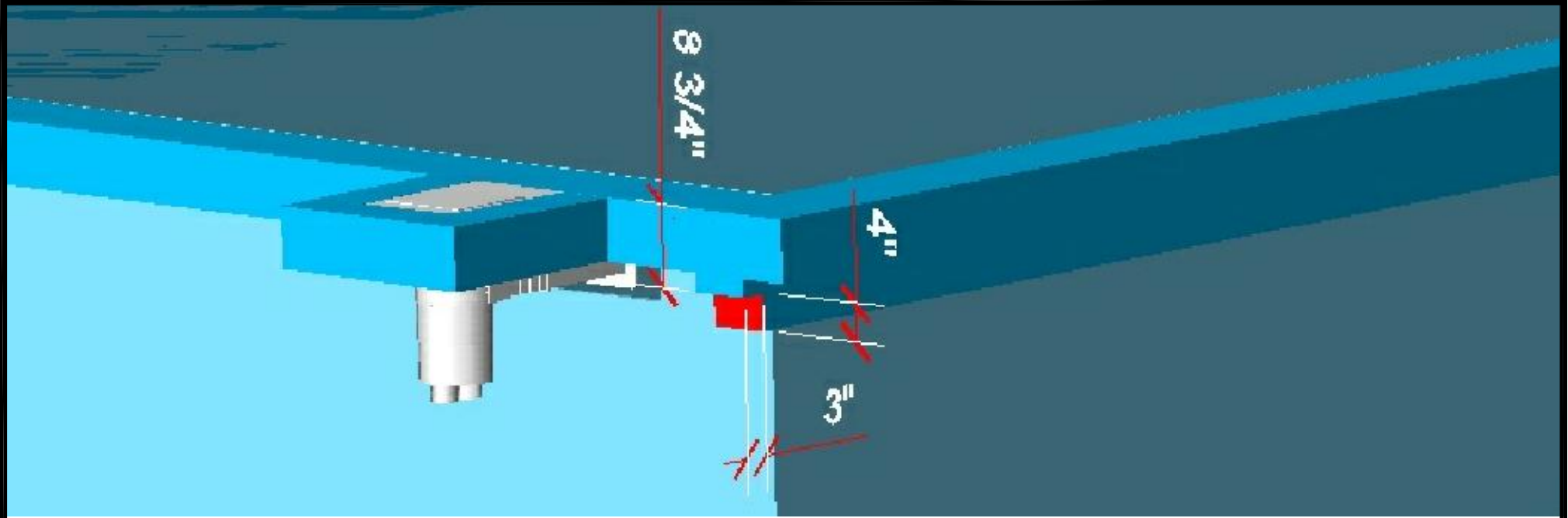
ALL DIMENSIONS SUBJECT TO 1/4" TOLERANCES

SCALE: AS NOTED

DATE: 03/21/06

JOB: STADIUM

DR#: WMS-STD-STLD10



These drawings, concepts, and details contained herein are the original proprietary designs of NESPA ENTERPRISES, developed over many years of experience in the pool and spa industry and as such are protected by the copyright laws of the United States Government. Reproduction of any of the above without written permission to do so by NESPA ENTERPRISES, is illegal.



NESPA ENTERPRISES INC.

2800 Richter Ave. Suite C
Oroville, CA 95966
Office: (530) 534-9910 Fax: (530) 534-9915
E-Mail: sales@tiledspas.com
Web Site: www.tiledspas.com

13' x 32' POOL

POOL/VAULT CORNER DETAIL

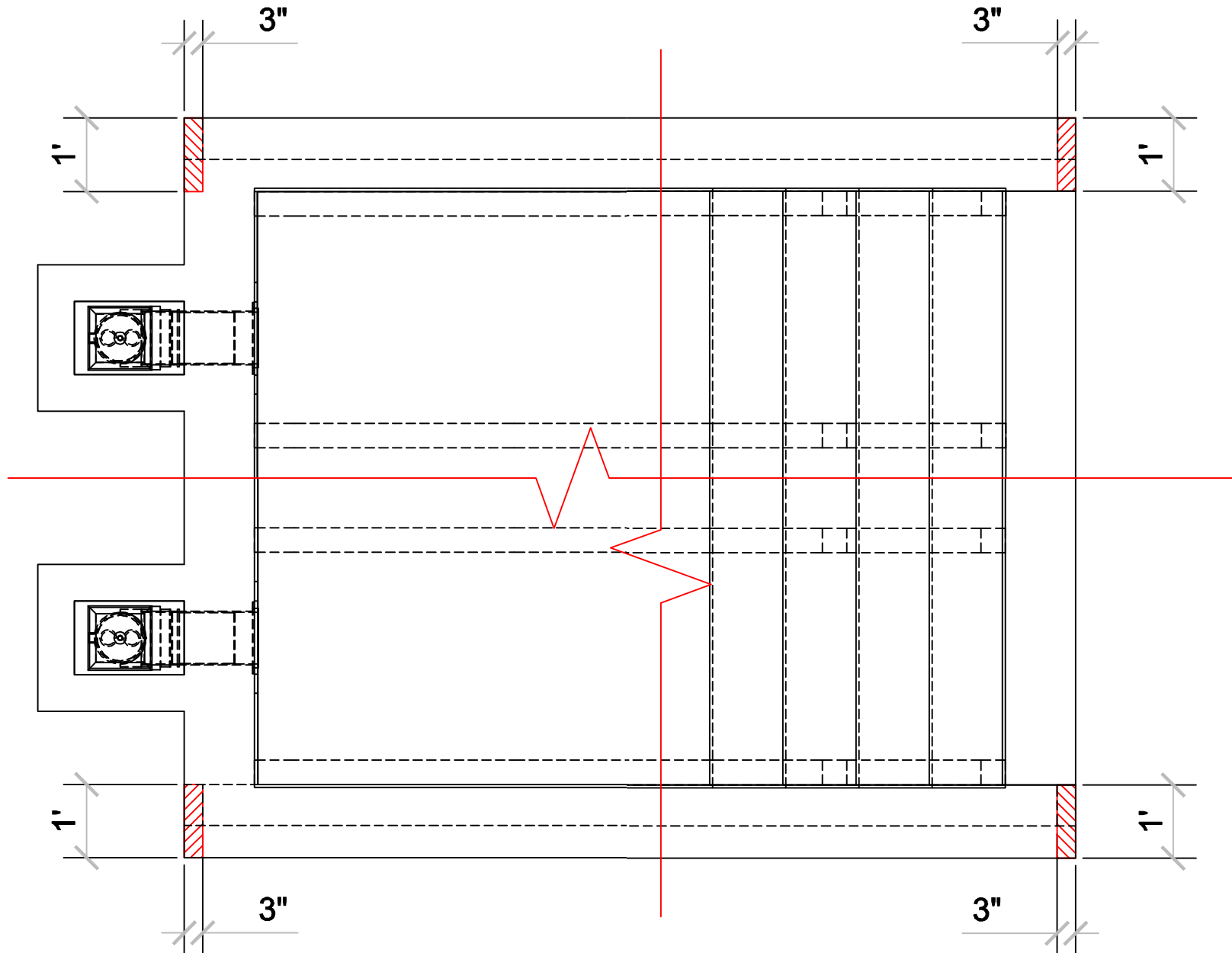
ALL DIMENSIONS SUBJECT TO 1/4" TOLERANCES

SCALE: 1/2" = 1'

DATE: 03/22/06

JOB: STADIUM

DR#: WMS-STD-PVLTD03



These drawings, concepts, and details contained herein are the original proprietary designs of NESPA ENTERPRISES, developed over many years of experience in the pool and spa industry and as such are protected by the copyright laws of the United States Government. Reproduction of any of the above without written permission to do so by NESPA ENTERPRISES, is illegal.



NESPA ENTERPRISES INC.

2800 Richter Ave. Suite C
Oroville, CA 95966
Office: (530) 534-9910 Fax: (530) 534-9915
E-Mail: sales@tiledspas.com
Web Site: www.tiledspas.com

13' x 32' POOL

PLUMBING DETAIL

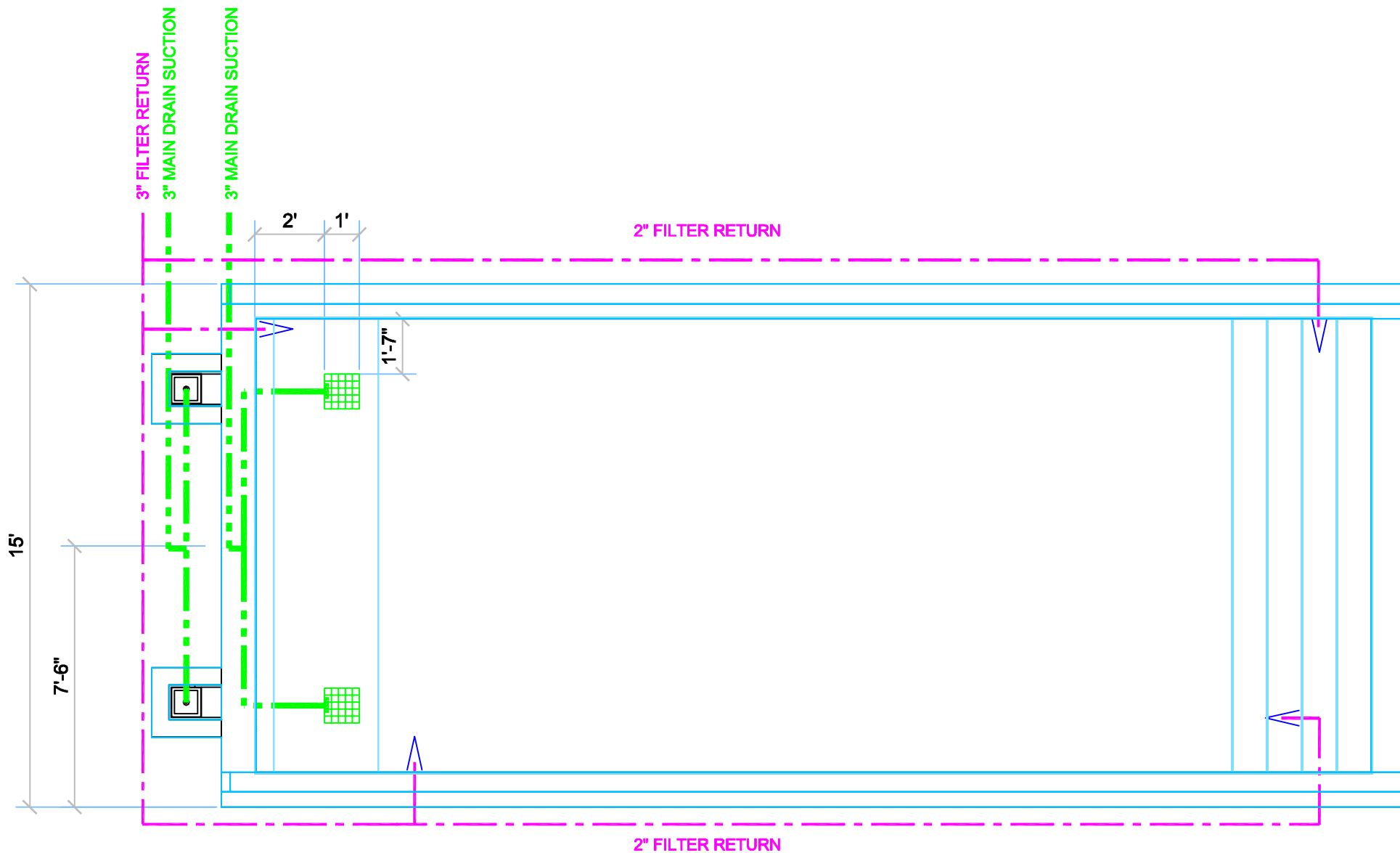
ALL DIMENSIONS SUBJECT TO 1/4" TOLERANCES

SCALE: 3/8" = 1'-0"

DATE: 03/08/06

JOB: STADIUM

DR#: WMS-STD-PLB04





NESPA ENTERPRISES INC.

2800 Richter Ave. Suite C
Oroville, CA 95966
Office: (530) 534-9910 Fax: (530) 534-9915
E-Mail: sales@tiledspas.com
Web Site: www.tiledspas.com

13' x 32' POOL

TILE DETAIL

SCALE: 1/4" = 1'-0"

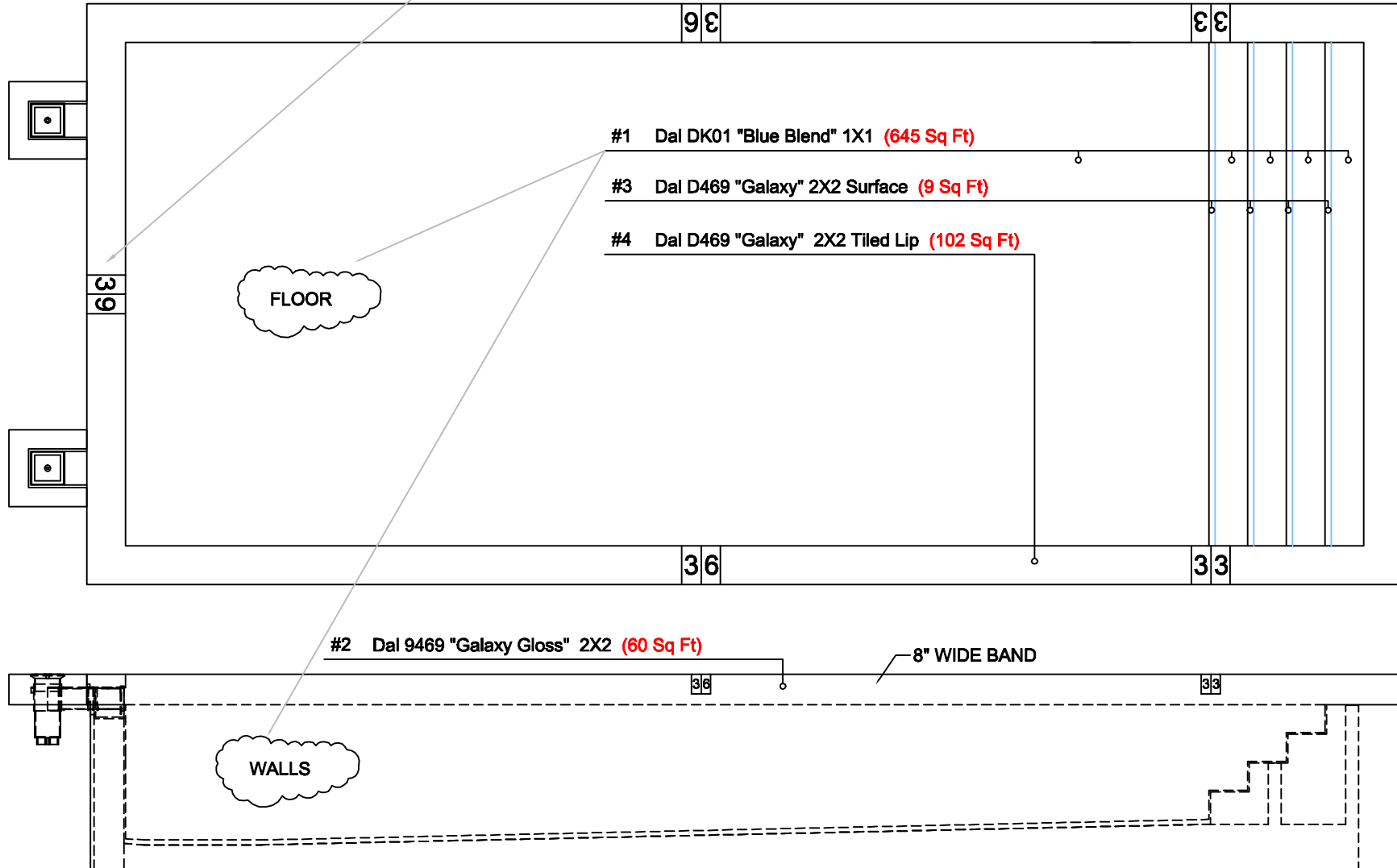
DATE: 03/08/06

JOB: STADIUM

DR#: WMS-STD-TLD04

ALL DIMENSIONS SUBJECT TO 1/4" TOLERANCES

DEPTH MARKERS
4" High Numbers on Deck
2" Min. on Wall





NESPA ENTERPRISES INC.

2800 Richter Ave. Suite C
Oroville, CA 95966
Office: (530) 534-9910 Fax: (530) 534-9915
E-Mail: sales@tiledspas.com
Web Site: www.tiledspas.com

13' x 32' POOL

FABRICATION

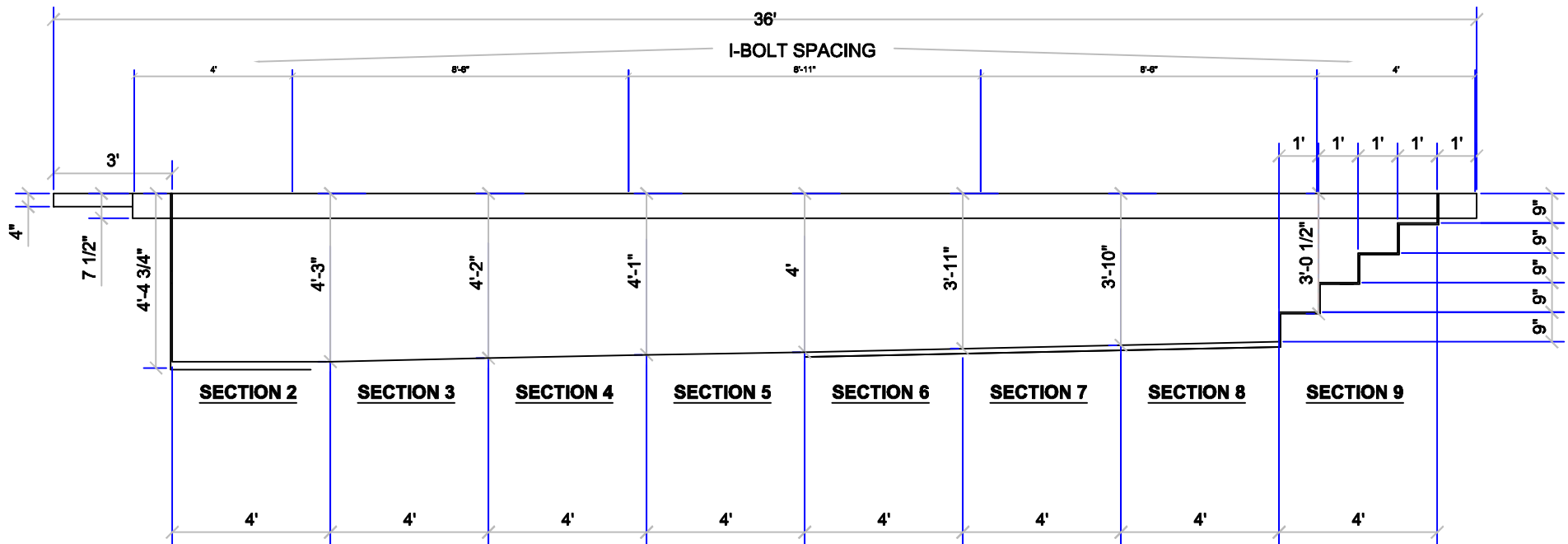
ALL DIMENSIONS SUBJECT TO 1/4" TOLERANCES

SCALE: 1/4" = 1'

DATE: 01/27/06

JOB: STADIUM

DR#: WMS-STD-FB01





NESPA ENTERPRISES INC.

2800 Richter Ave. Suite C
 Oroville, CA 95966
 Office: (530) 534-9910 Fax: (530) 534-9915
 E-Mail: sales@tiledspas.com
 Web Site: www.tiledspas.com

13' x 32' POOL

Handrail Detail

ALL DIMENSIONS SUBJECT TO 1/4" TOLERANCES

SCALE: 3/4" = 1'-0"

DATE: 05/03/06

JOB: STADIUM

DR#: WMS-STD-Handrail

