


# VALLARTA

## ALL TILED SPA - Fits 4 Adults

SPECIFICATIONS	
DRY WEIGHT:	2200 LBS.
TOTAL WEIGHT:	8748 LBS.
WATER:	785.4 GAL.
VOLUME:	105 Cu.Ft.
WEIGHT:	6548 LBS.
SURFACE AREA:	45.0 SQ. FT.
IAPMO#:	1138
FDA#:	2030305

**SKID SUPPORT STRUCTURE\* BONDED TO SPA**




\*SKIDS SUPPLIED BY NESPA

**LIGHT NICHE**




SPA BRIGHT, 120 V, 100 WATT, 50' CORD, U.L. APPROVED

**MAIN DRAIN**




AquaStar 32CDFLR, 32" Channel Drain, Approved Max Flow Rate: Floor = 236 GPM @ 3.4 fps Wall = 136 GPM @ 1.9 fps V.G.B Approved Safety Drain

**SIDEWALL SUCTION**



AquaStar 8AV, 8" Dia Frame, Approved Max Flow Rate: Floor = 88 GPM @ 3.2 fps Wall = 70 GPM @ 2.6 fps 8.8 Sq In - Open Area V.G.B Approved Safety Drain

**EQUALIZER**




5" HIGH FLOW SUCTIONS Waterway 640-357V Super Hi-Flo Suction Assy. Max Flow 180 GPM Complies w/ ANSI Code ASME A112.19.8-2007 & VGB 2008

**SKIMMER**




HAYWARD SP-1084FVE SURFACE SKIMMER W/ EQUALIZER, NSF APPROVED

**JET**




HYDRO INLETS 1-1/2" WATER - 1-1/2" AIR HYDROAIR #10-5100 COMPLIES W/ ANSI CODE ASME A112.19.8-07 UL APPROVED

**RETURN**

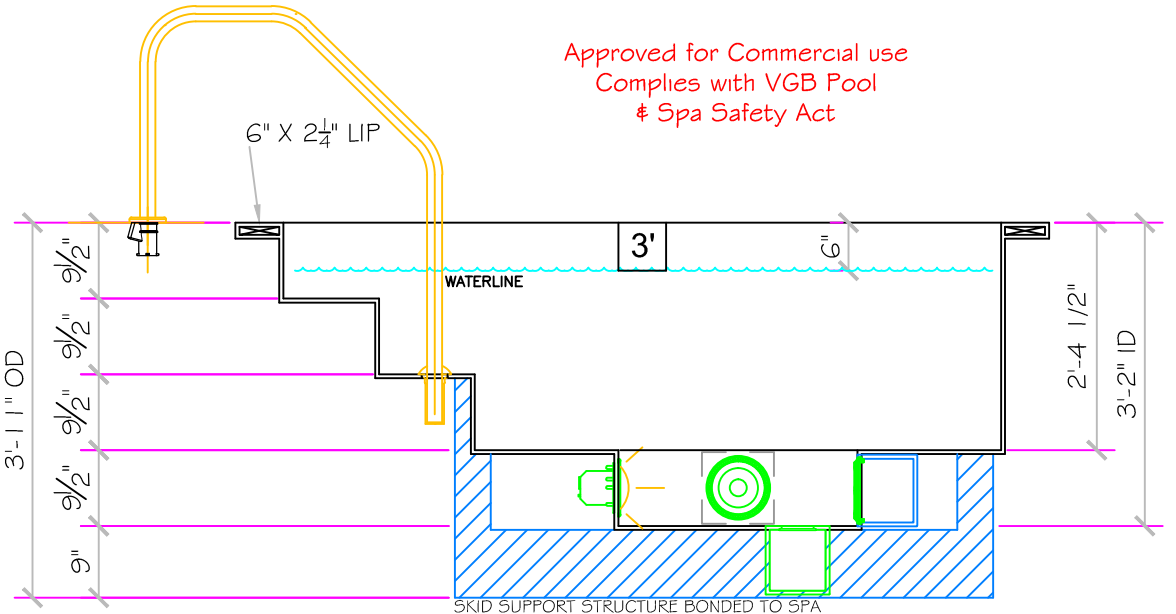
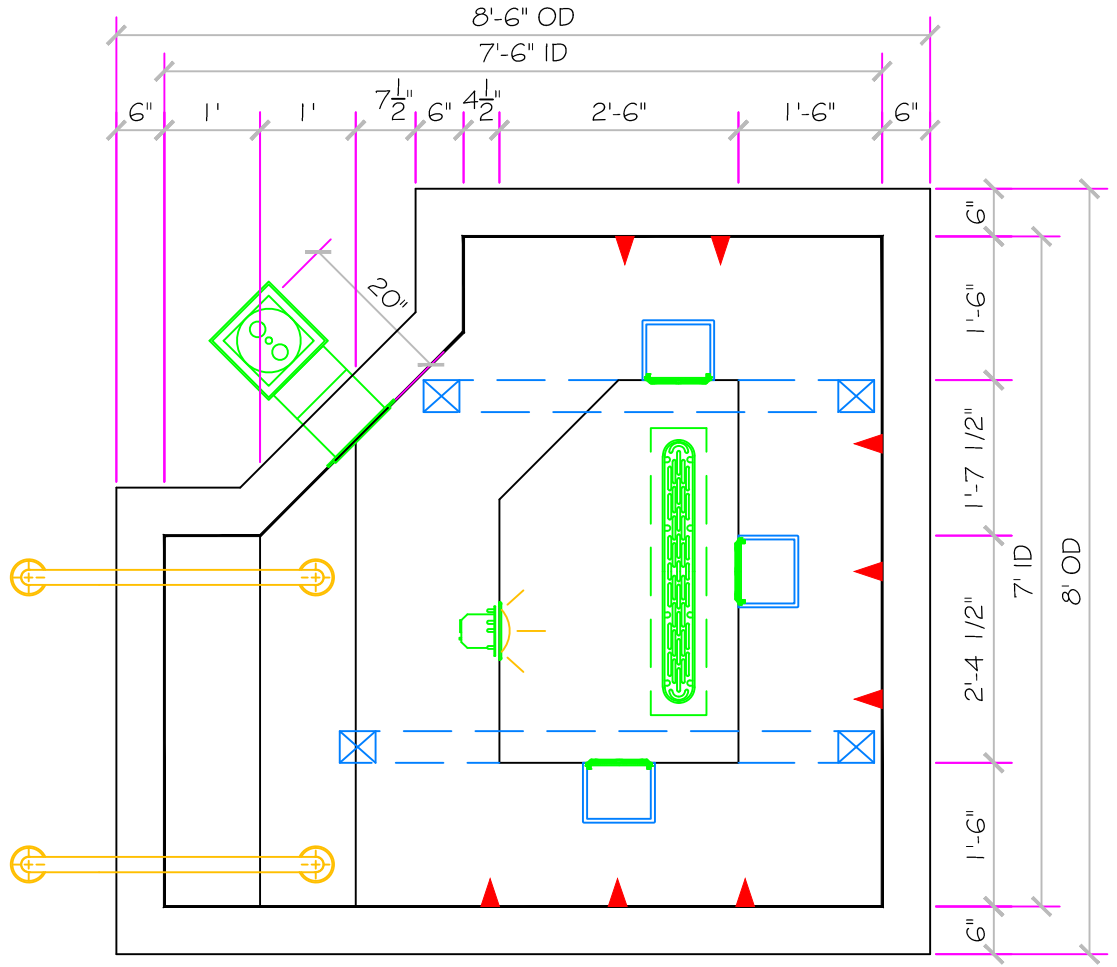


INLET FITTINGS 1-1/2" WALL TYPE W/ EYEBALL HYDROAIR #10-3500 COMPLIES W/ ANSI CODE ASME A112.19.8-07 UL APPROVED

**FILL**



INLET FITTINGS 1-1/2" WALL TYPE W/ EYEBALL HYDROAIR #10-3500 COMPLIES W/ ANSI CODE ASME A112.19.8-07 UL APPROVED



Approved for Commercial use  
Complies with VGB Pool  
& Spa Safety Act