

Quick Install Guide For bwa™ Kit - BP501/601

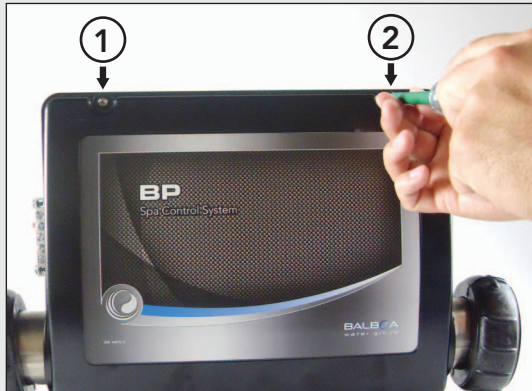
TOOL YOU WILL NEED

– Phillips screwdriver 

WARNING!

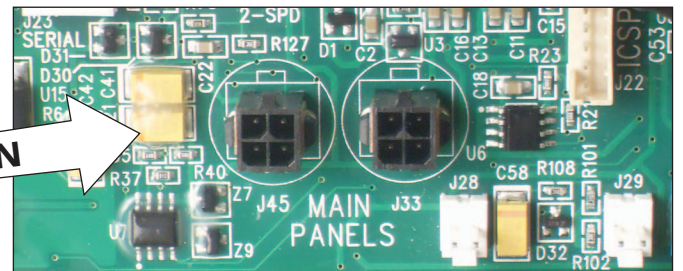
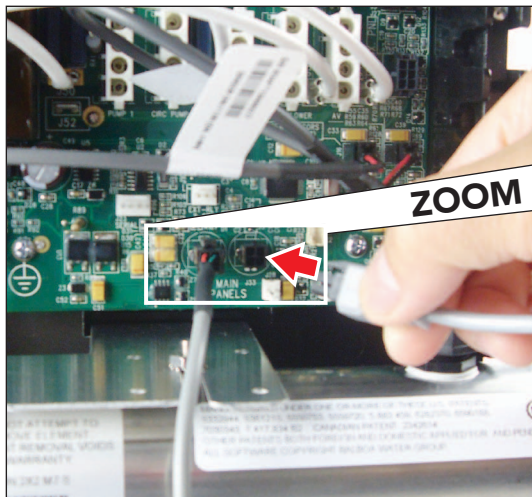
Please contact an electrician or your local electrical company to connect the Wi-Fi connector for you. **DO NOT OPEN THE SPA SYSTEM AND ATTEMPT TO CONNECT THE WI-FI CONNECTOR YOURSELF.** The high electrical voltage will harm or kill you.

STEP 1



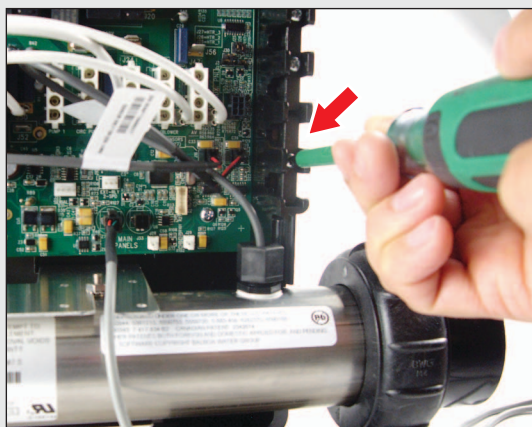
– Use a phillips screwdriver to remove the 2 top screws that hold the system cover in place.

STEP 2



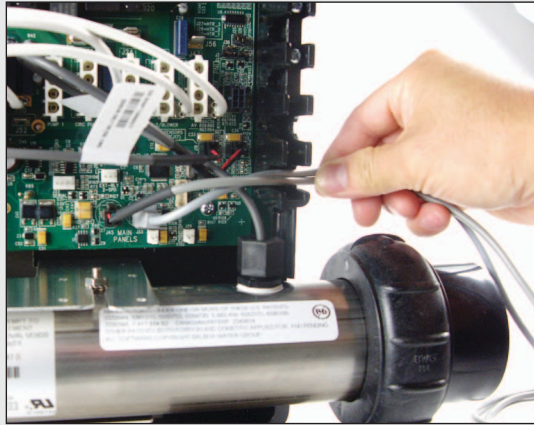
– Insert the Balboa Wi-Fi Cable into either Panel Jack J45 or J33.

STEP 3



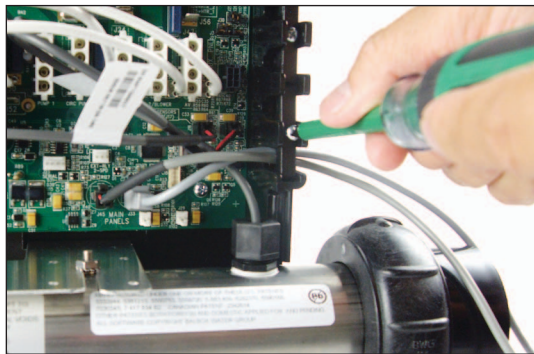
– Remove 1 screw to open the cable holder.

STEP 4

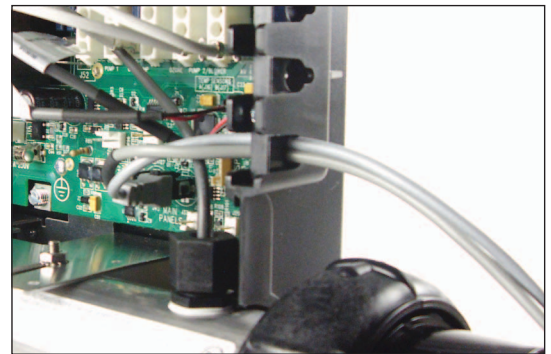


- Place the Wi-Fi cable and Control Panel cable inside the wire holder.

STEP 5

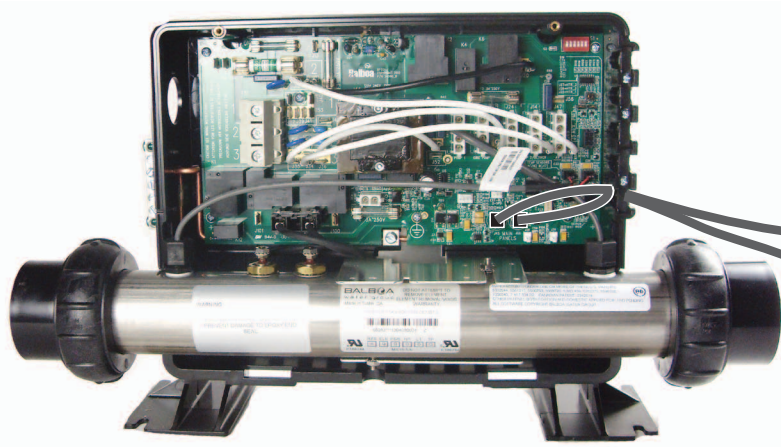


- Insert the plastic holder and screw back in place. Make sure the 2 cable wires are secure in place.



- Close up shot of how the 2 wires should look.
- Close the Control Panel System cover and secure the 2 top screws. **YOU'RE DONE!**

This is how your system should look like when finished.



Note: Place the Wi-Fi module away from any metal tub supports.