

NESPA ENTERPRISES INC.

2800 Richter Ave. Suite E
 Oroville, CA 95966
 Office: (888) 479-4677 Fax: (530) 543-9915
 E-Mail: sales@tiledspas.com www.tiledspas.com

ACAPULCO

SCALE: 1/2" = 1'-0"

DATE: 12/28/01

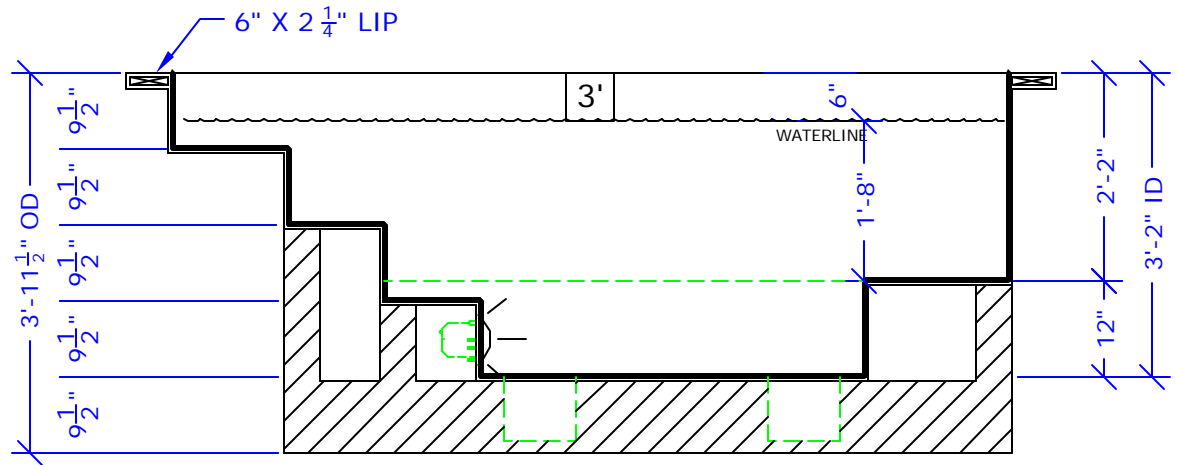
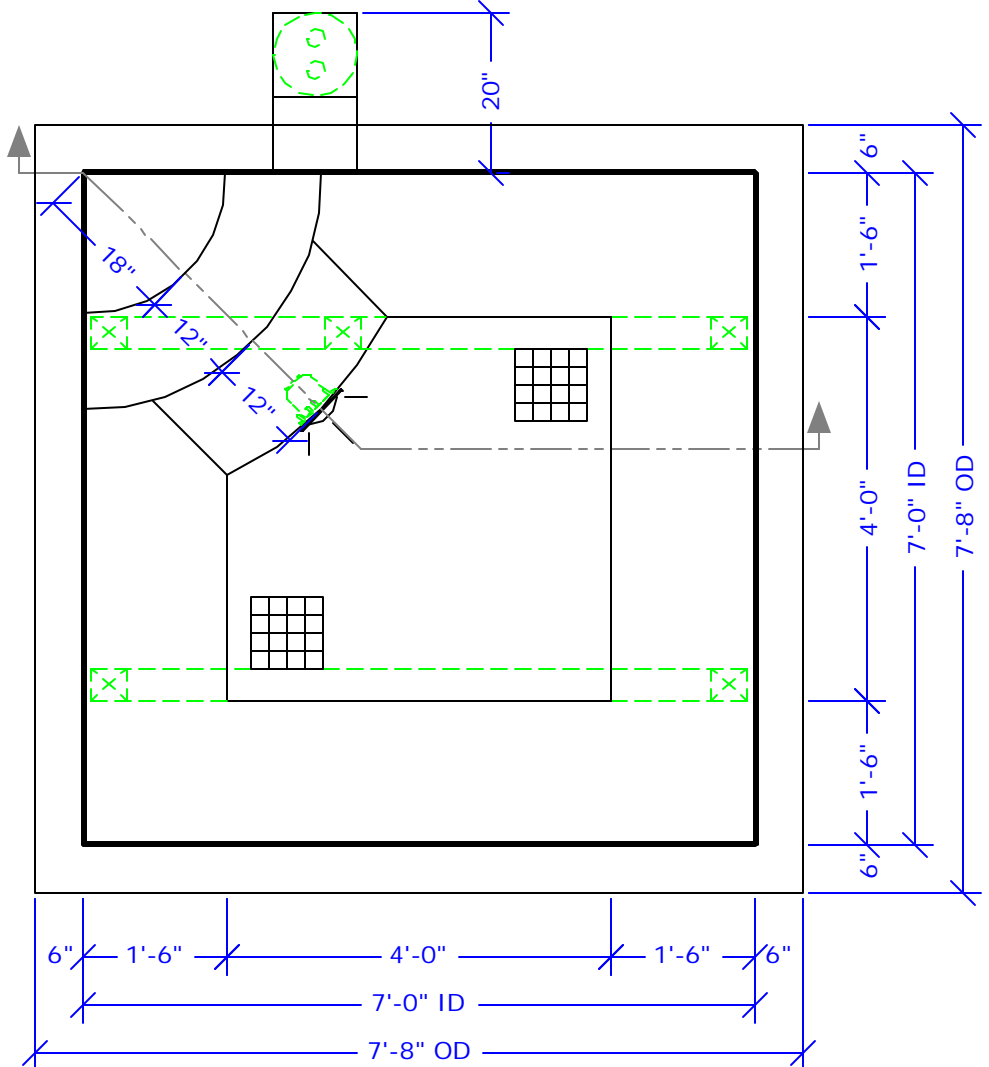
JOB :

COMMERCIAL

ALL DIMENSIONS SUBJECT TO 1/4" TOLERANCES

SKID SUPPORT STRUCTURE	
MAIN DRAIN	
	9" X 9"
LIGHT NICH	
HAYWARD SKIMMER NSF APPROVED	

SPECIFICATIONS	
DRY WEIGHT: 1200 lbs.	
WET WEIGHT: 8885 lbs.	
WATER: 925 GALLONS	
SURFACE AREA: 49 sq.ft.	
IAPMO#: 1138	
FDA#: 2030305	
SPECS BASED ON FULL TUB	



These drawings, concepts, and details contained herein are the original proprietary designs of NESPA ENTERPRISES, developed over many years of experience in the pool and spa industry and as such are protected by the copyright laws of the United States Government. Reproduction of any of the above without written permission to do so by NESPA ENTERPRISES, is illegal.