

NESPA ENTERPRISES INC.

2800 Richter Ave. Suite C, Oroville, CA 95966  
 Office: (530) 534-9910 Fax: (530) 534-9915  
 E-Mail: sales@tiledspas.com www.tiledspas.com

# SWIM SPA

## SPA DETAIL

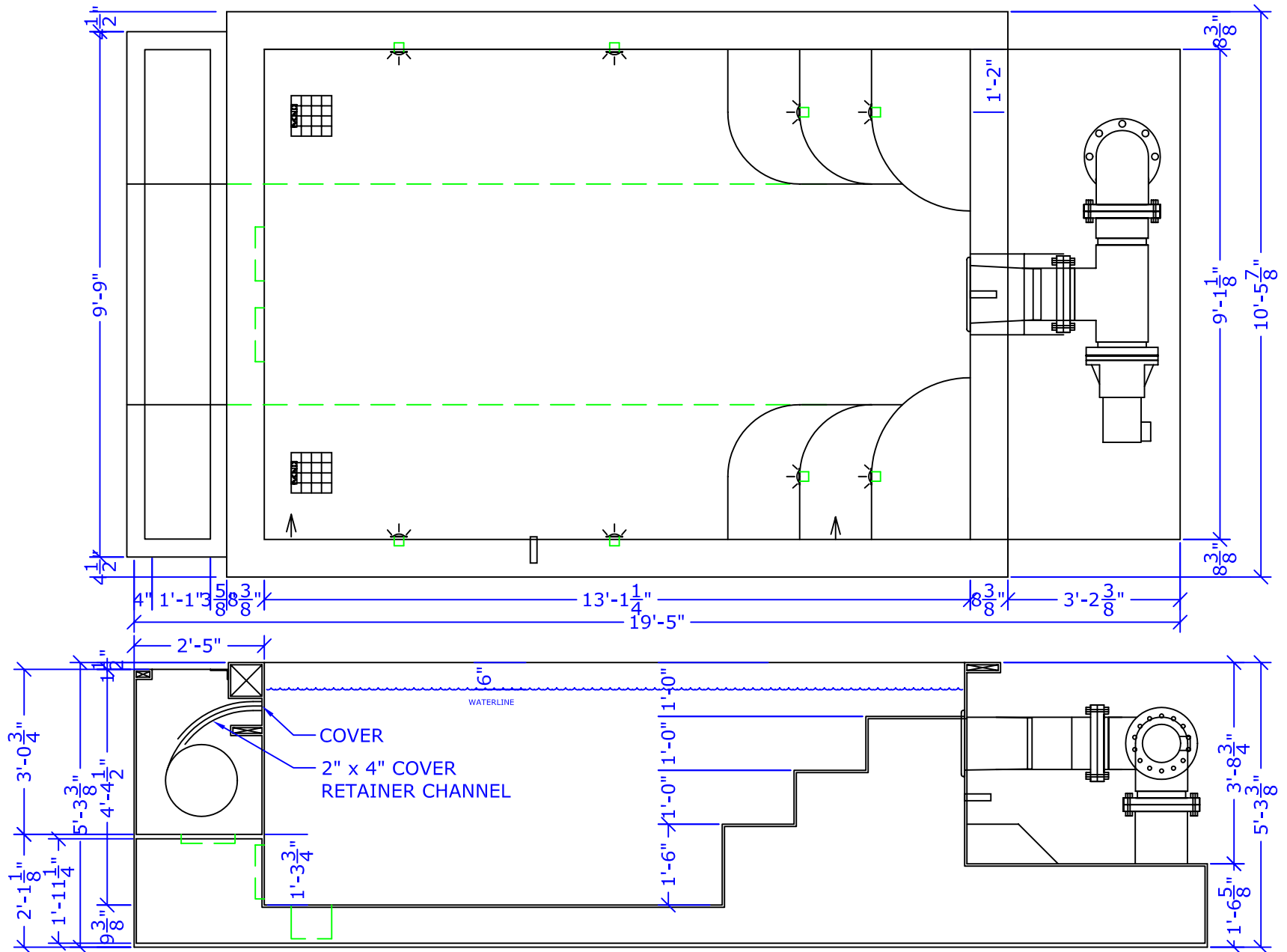
\*ALL DIMENSIONS SUBJECT TO 1/4" TOLERANCES\*

SCALE: 3/8" = 1'-0"

DATE: 7/12/04

JOB: SCHLICHTMANN

DR#: OCS-SCH-SW-SD15



NESPA ENTERPRISES INC.

2800 Richter Ave. Suite C  
Oroville, CA 95966

Office: (530) 534-9910 Fax: (530) 534-9915  
E-Mail: sales@tiledspas.com www.tiledspas.com

# SWIM SPA

## TILE LOCTION

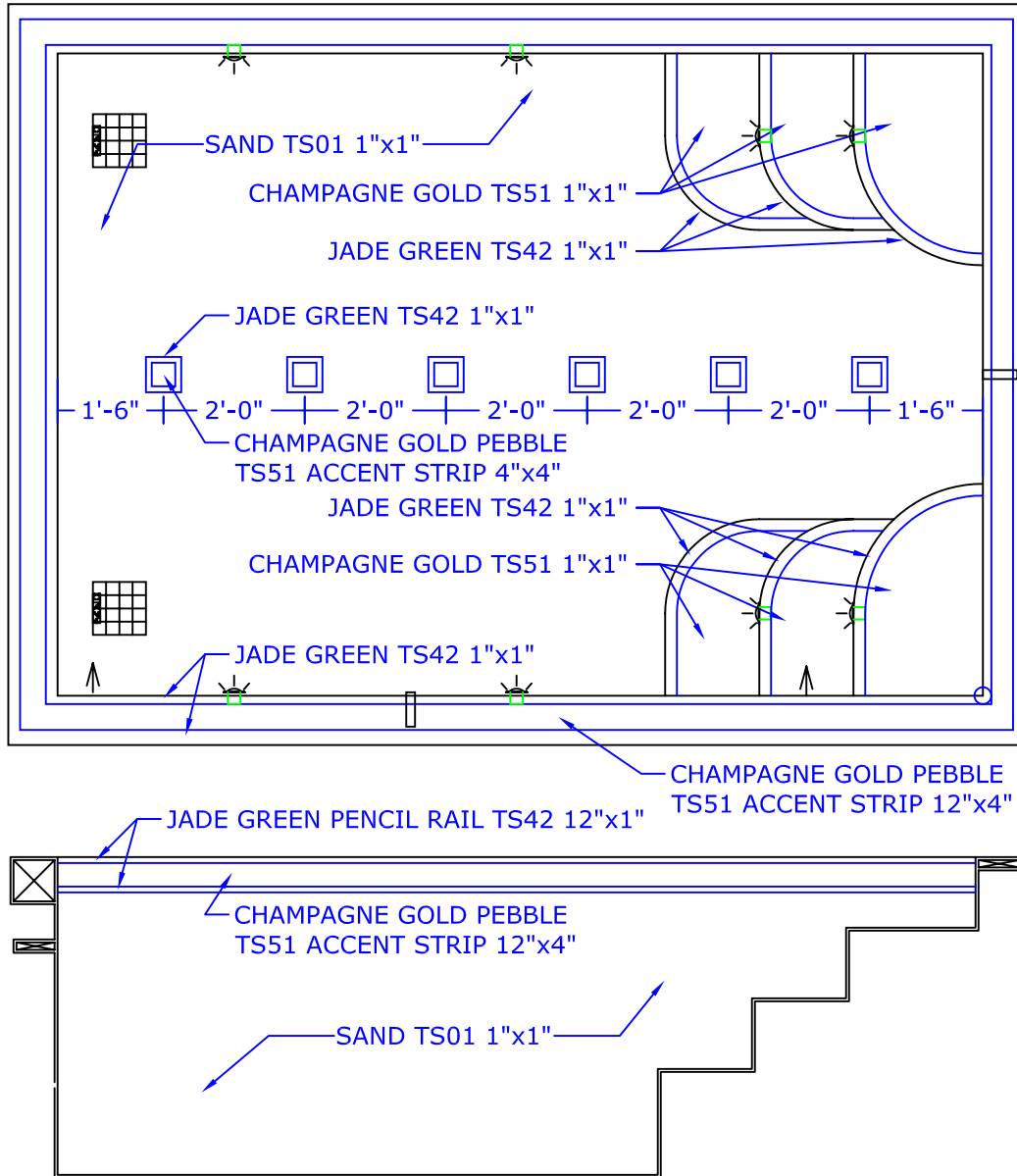
\*ALL DIMENSIONS SUBJECT TO 1/4" TOLERANCES\*

SCALE: 3/8" = 1'-0"

DATE: 5/20/04

JOB: SCHLICHTMANN

DR#: OCS-SCH-SW-TL01



NESPA ENTERPRISES INC.

2800 Richter Ave. Suite C, Oroville, CA 95966  
Office: (530) 534-9910 Fax: (530) 534-9915  
E-Mail: sales@tiledspas.com www.tiledspas.com

# SWIM SPA

## SONAR GUARD LAYOUT

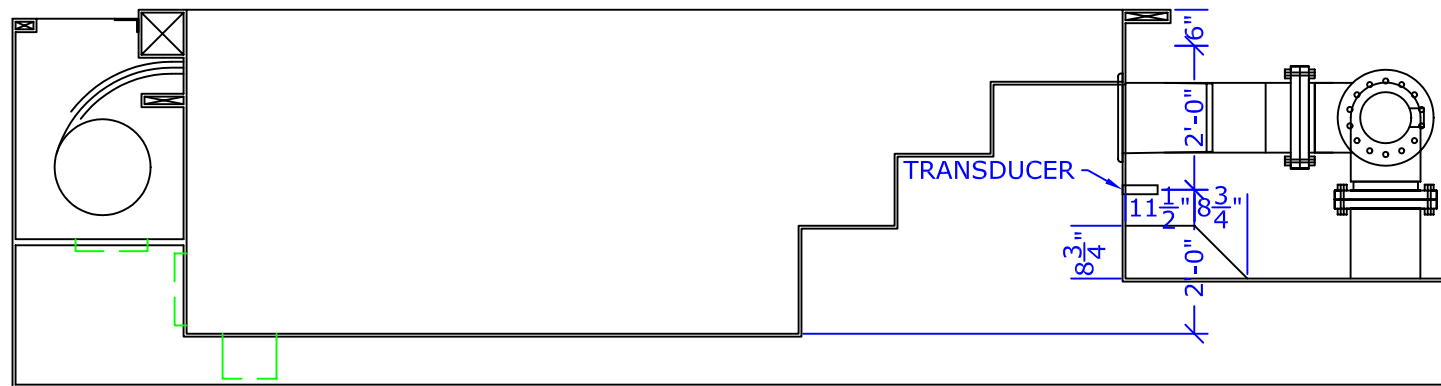
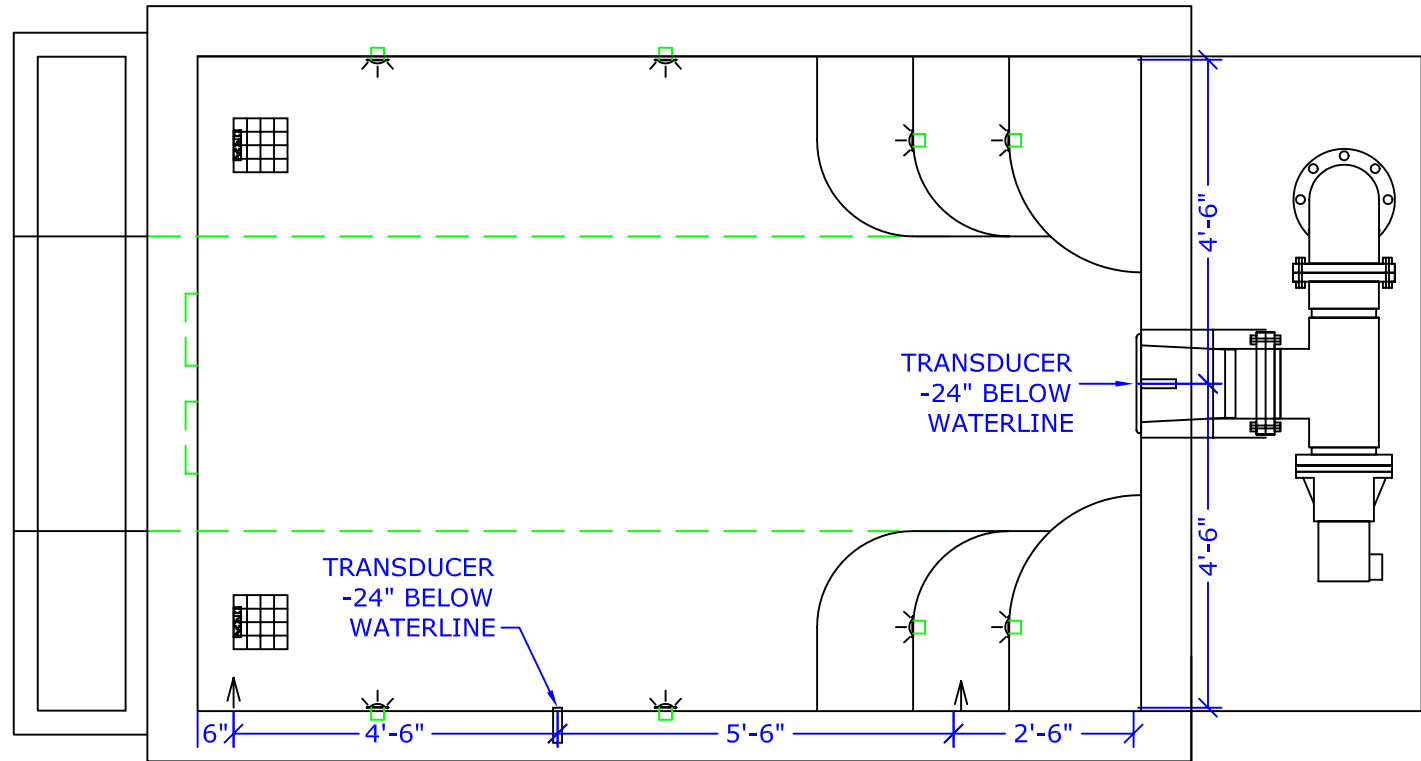
\*ALL DIMENSIONS SUBJECT TO 1/4" TOLERANCES\*

SCALE: 3/8" = 1'-0"

DATE: 6/24/04

JOB: SCHLICHTMANN

DR#: OCS-SCH-SW-SGL02



NESPA ENTERPRISES INC.

2800 Richter Ave. Suite C, Oroville, CA 95966  
Office: (530) 534-9910 Fax: (530) 534-9915  
E-Mail: sales@tiledspas.com www.tiledspas.com

SWIM SPA

PLUMBING LAYOUT

\*ALL DIMENSIONS SUBJECT TO 1/4" TOLERANCES\*

SCALE: 3/8" = 1'-0"

DATE: 7/12/04

JOB: SCHLICHTMANN

DR#: OCS-SCH-SW-EL01

