

NESPA ENTERPRISES INC.

2800 Richter Ave. Suite C
 Oroville, CA 95966
 Office: (530) 534-9910 Fax: (530) 534-9915
 E-Mail: sales@tiledspas.com www.tiledspas.com

IMPERIA TYP

SYCAMORE 1

ALL DIMENSIONS SUBJECT TO 1/4" TOLERANCES


SCALE: 1/2" = 1'-0"

DATE: 06/21/05

JOB: SAN YSIDRO #1


DR#:

SKID SUPPORT STRUCTURE* BONDED TO SPA

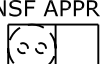


*SKIDS SUPPLIED BY NESPA

LIGHT NICH

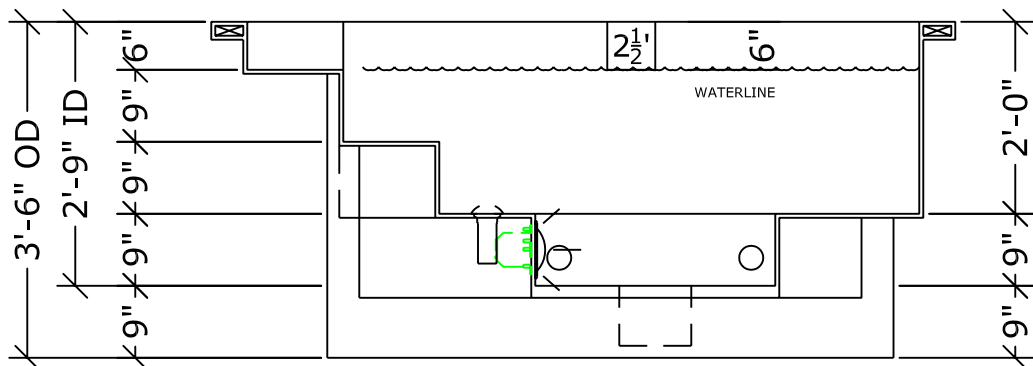
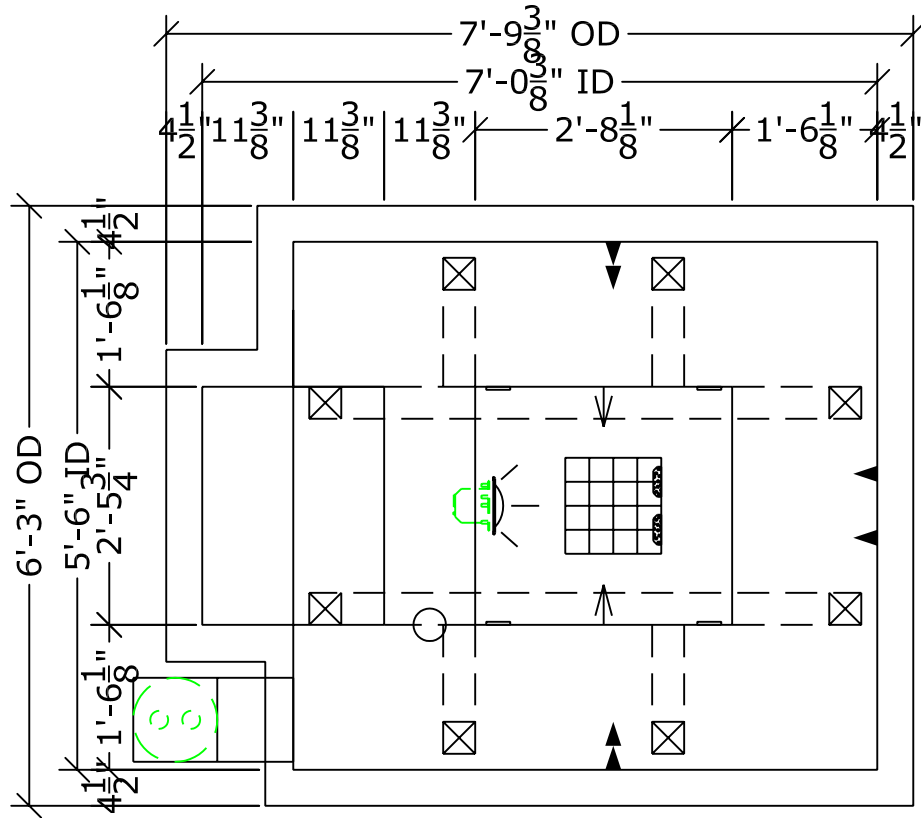


HAYWARD SKIMMER NSF APPROVED



SPECIFICATIONS

DRY WEIGHT: 1050 lbs.
 WET WEIGHT: 4120 lbs.
 WATER: 410 GALLONS
 SURFACE AREA: 35 sq.ft.
 IAPMO#: 1138
 FDA#: 2030305



NESPA ENTERPRISES INC.

2800 Richter Ave. Suite C
 Oroville, CA 95966
 Office: (530) 534-9910 Fax: (530) 534-9915
 E-Mail: sales@tiledspas.com www.tiledspas.com

IMPERIA TYP

SYCAMORE 2

ALL DIMENSIONS SUBJECT TO 1/4" TOLERANCES


SCALE: 1/2" = 1'-0"

DATE: 06/21/05

JOB: SAN YSIDRO #2


DR#:

SKID SUPPORT STRUCTURE* BONDED TO SPA

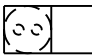


*SKIDS SUPPLIED BY NESPA

LIGHT NICH

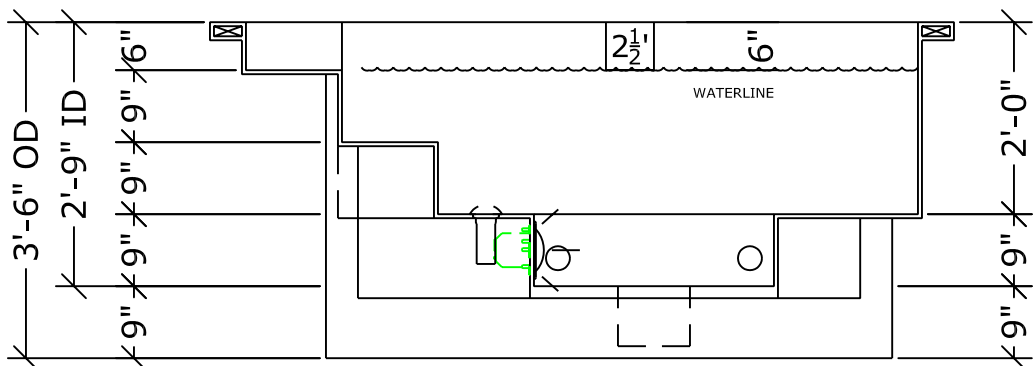
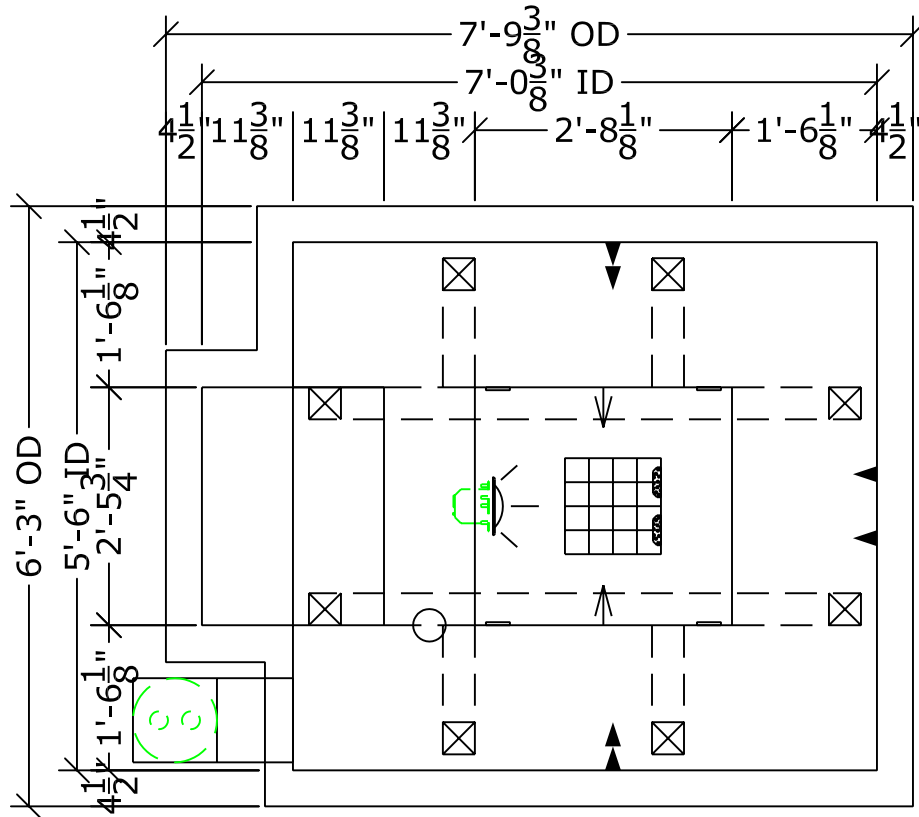


HAYWARD SKIMMER NSF APPROVED



SPECIFICATIONS

DRY WEIGHT: 1050 lbs.
 WET WEIGHT: 4120 lbs.
 WATER: 410 GALLONS
 SURFACE AREA: 35 sq.ft.
 IAPMO#: 1138
 FDA#: 2030305



NESPA ENTERPRISES INC.

2800 Richter Ave. Suite C
 Oroville, CA 95966
 Office: (530) 534-9910 Fax: (530) 534-9915
 E-Mail: sales@tiledspas.com www.tiledspas.com

IMPERIA TYP

SYCAMORE 3

ALL DIMENSIONS SUBJECT TO 1/4" TOLERANCES


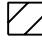
SCALE: 1/2" = 1'-0"

DATE: 06/21/05

JOB: SAN YSIDRO #3

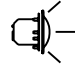
DR#:

SKID SUPPORT STRUCTURE* BONDED TO SPA

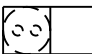



*SKIDS SUPPLIED BY NESPA

LIGHT NICH

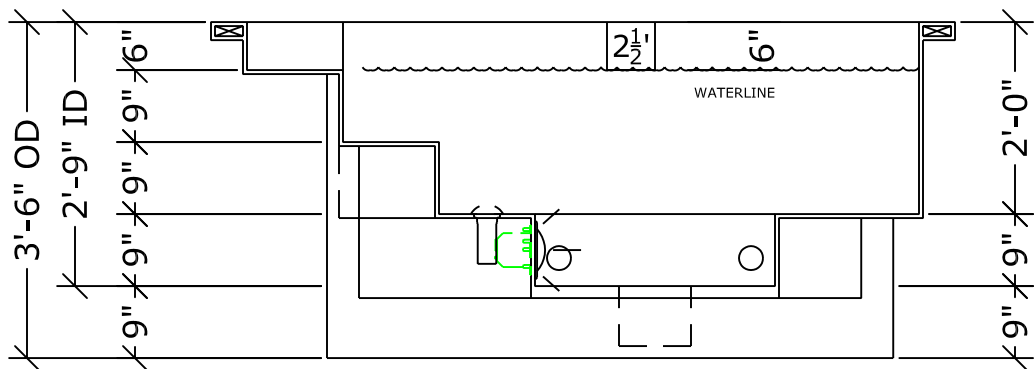
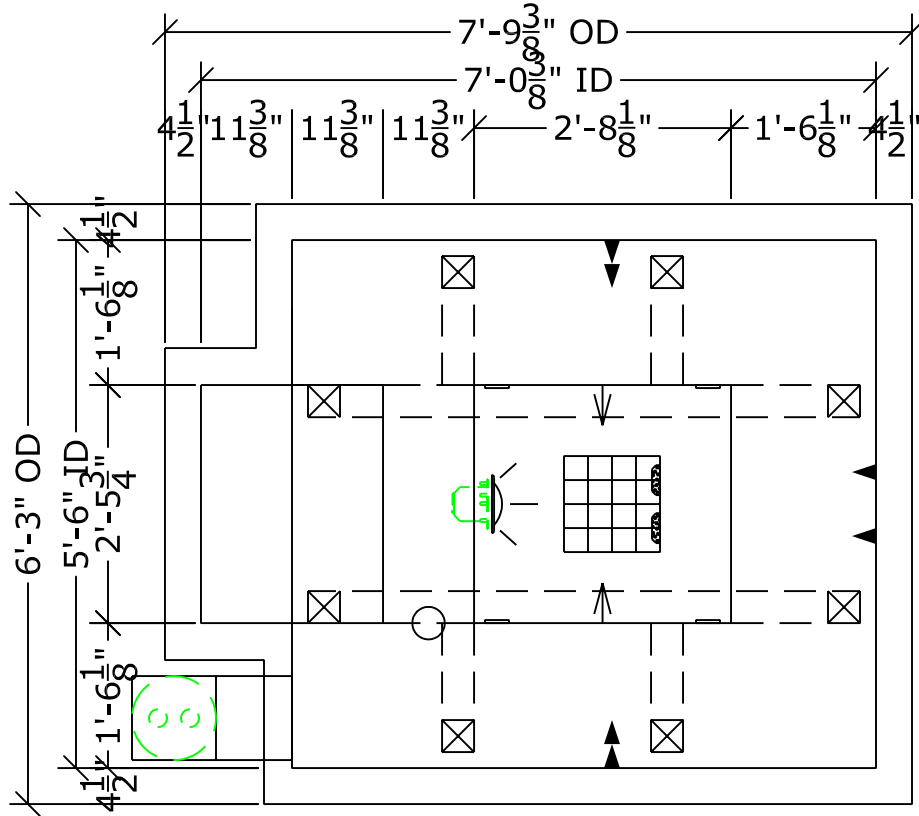


HAYWARD SKIMMER NSF APPROVED



SPECIFICATIONS

DRY WEIGHT: 1050 lbs.
 WET WEIGHT: 4120 lbs.
 WATER: 410 GALLONS
 SURFACE AREA: 35 sq.ft.
 IAPMO#: 1138
 FDA#: 2030305



NESPA ENTERPRISES INC.

2800 Richter Ave. Suite C
 Oroville, CA 95966
 Office: (530) 534-9910 Fax: (530) 534-9915
 E-Mail: sales@tiledspas.com www.tiledspas.com

WEINGAND N

SPA DETAIL

ALL DIMENSIONS SUBJECT TO 1/4" TOLERANCES


SCALE: 1/2" = 1'-0"

DATE: 06/21/05

JOB: SAN YSIDRO #4

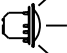
DR#:

SKID SUPPORT STRUCTURE* BONDED TO SPA




*SKIDS SUPPLIED BY NESPA

LIGHT NICH

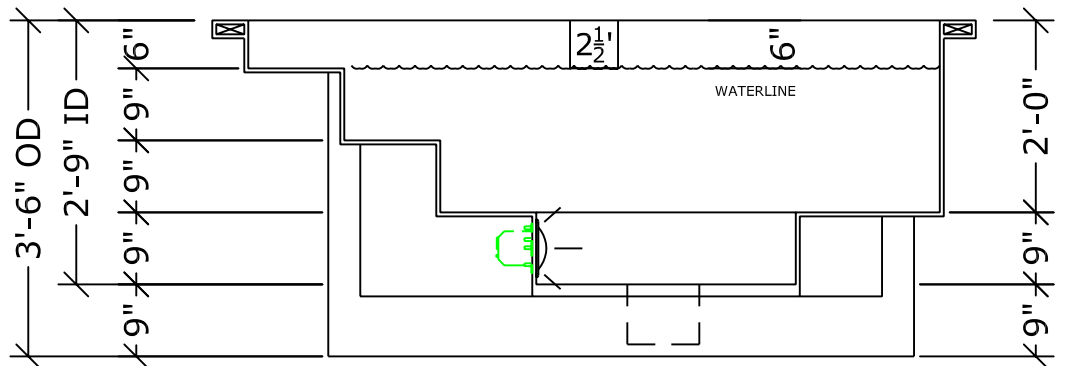
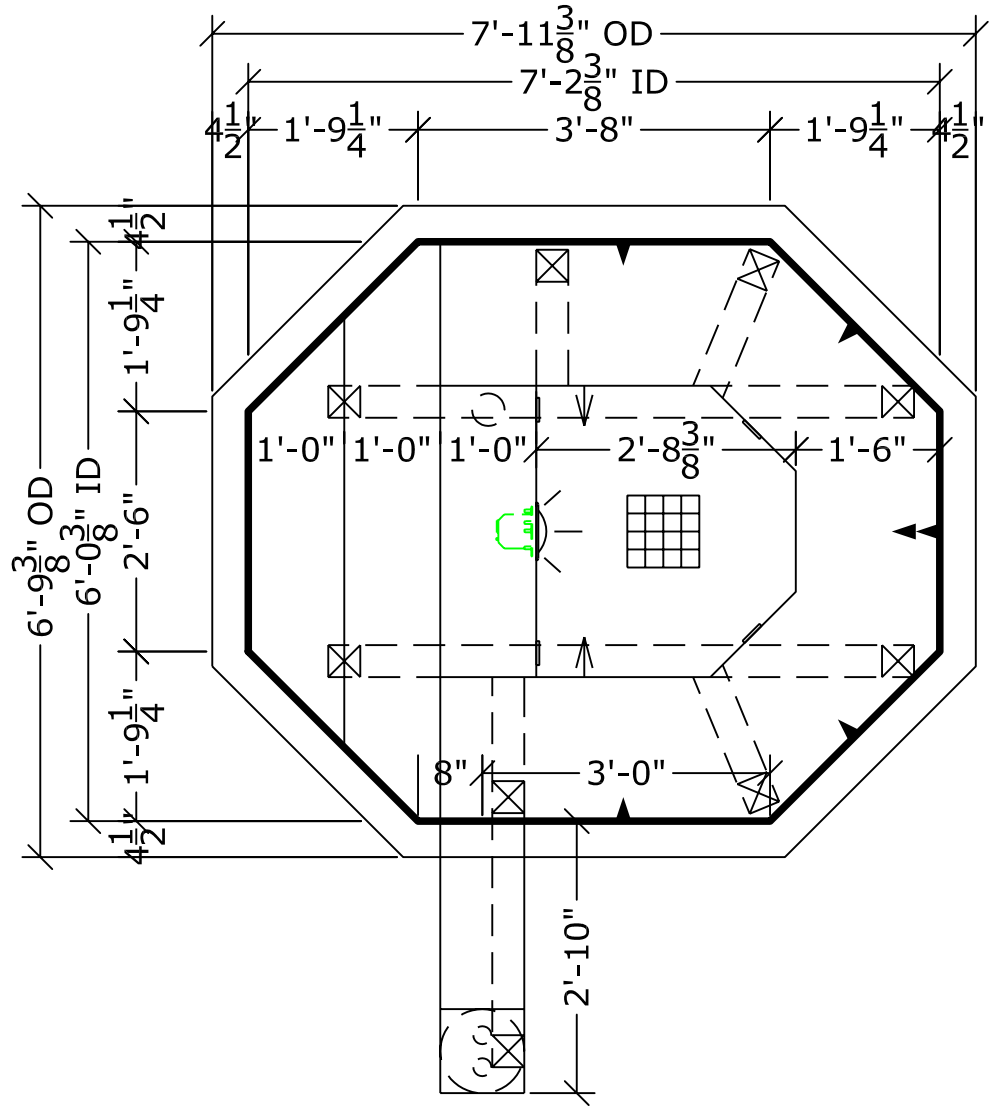


HAYWARD SKIMMER NSF APPROVED



SPECIFICATIONS

DRY WEIGHT: 1050 lbs.
 WET WEIGHT: 4450 lbs.
 WATER: 410 GALLONS
 SURFACE AREA: 37 sq.ft.
 IAPMO#: 1138
 FDA#: 2030305



NESPA ENTERPRISES INC.

2800 Richter Ave. Suite C

Oroville, CA 95966

Office: (530) 534-9910 Fax: (530) 534-9915

E-Mail: sales@tiledspas.com www.tiledspas.com

IMPERIA TYP

WEINGAND SOUTH

ALL DIMENSIONS SUBJECT TO 1/4" TOLERANCES

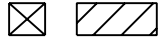
SCALE: 1/2" = 1'-0"

DATE: 06/21/05

JOB: SAN YSIDRO #5

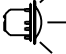
DR#:

SKID SUPPORT STRUCTURE* BONDED TO SPA

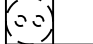


*SKIDS SUPPLIED BY NESPA

LIGHT NICH

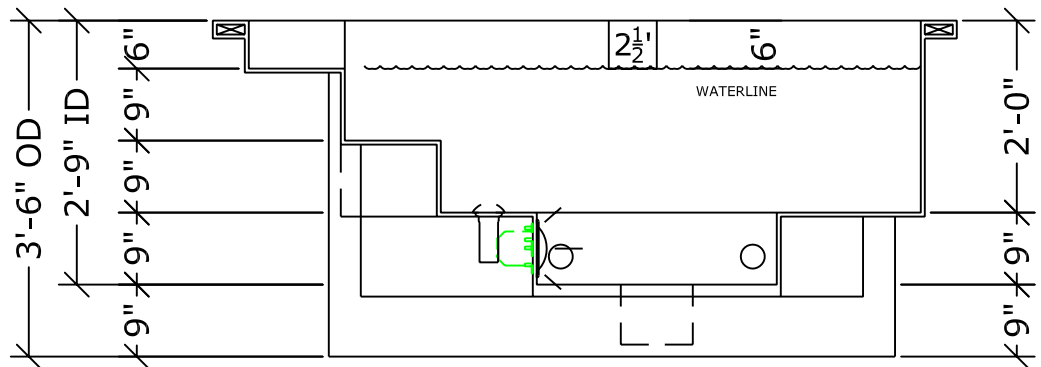
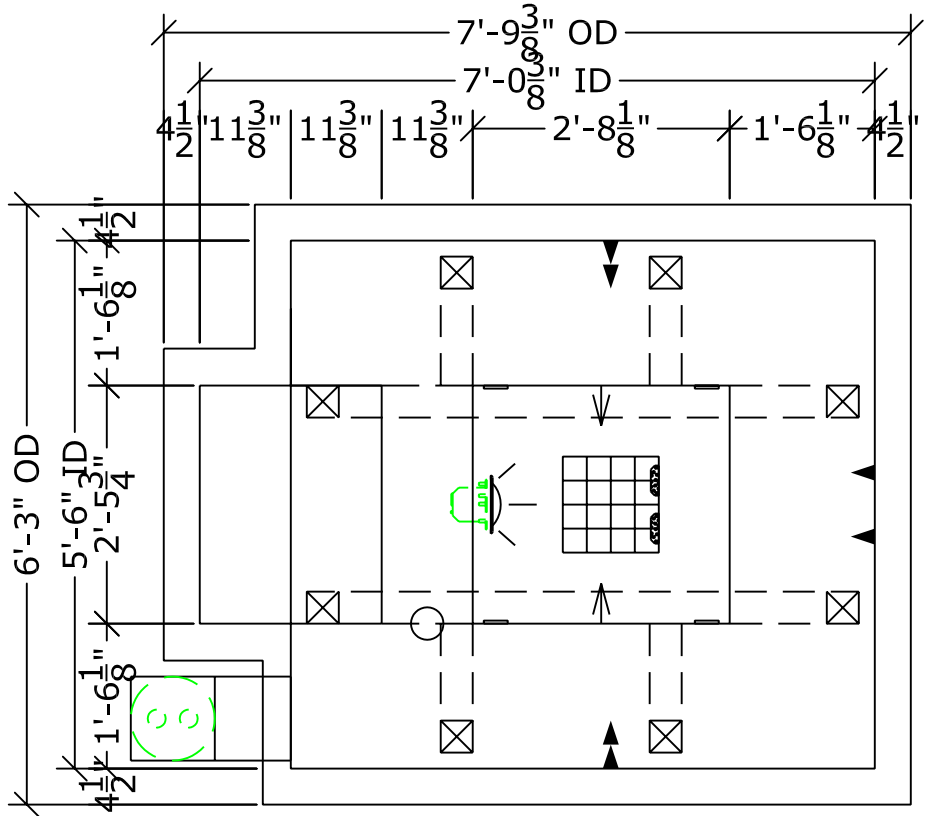


HAYWARD SKIMMER NSF APPROVED



SPECIFICATIONS

DRY WEIGHT: 1050 lbs.
 WET WEIGHT: 4120 lbs.
 WATER: 410 GALLONS
 SURFACE AREA: 35 sq.ft.
 IAPMO#: 1138
 FDA#: 2030305



NESPA ENTERPRISES INC.

2800 Richter Ave. Suite C

Oroville, CA 95966

Office: (530) 534-9910 Fax: (530) 534-9915

E-Mail: sales@tiledspas.com www.tiledspas.com

WILLOW 1

SPA DETAIL

SCALE: 1/2" = 1'-0"

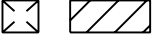
DATE: 06/21/05

JOB: SAN YSIDRO #6

DR#:

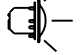
ALL DIMENSIONS SUBJECT TO 1/4" TOLERANCES

SKID SUPPORT STRUCTURE* BONDED TO SPA

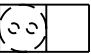


*SKIDS SUPPLIED BY NESPA

LIGHT NICH

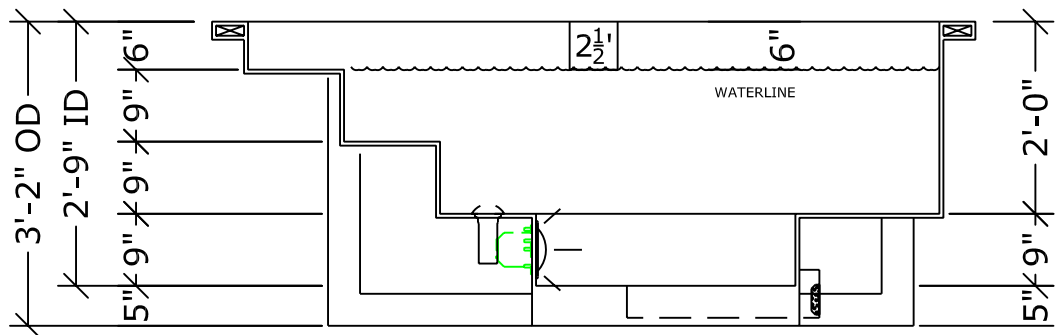
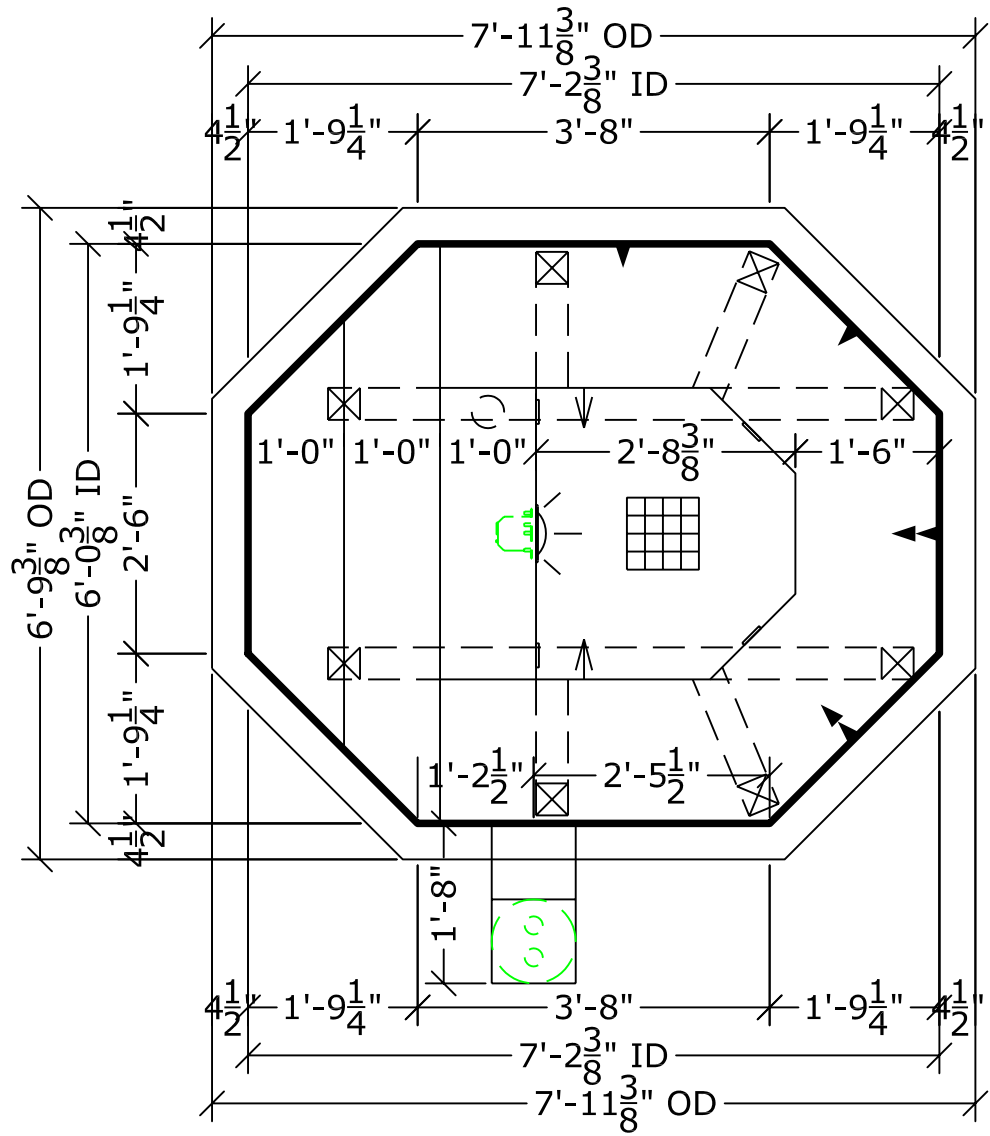


HAYWARD SKIMMER NSF APPROVED



SPECIFICATIONS

DRY WEIGHT: 1050 lbs.
 WET WEIGHT: 4450 lbs.
 WATER: 410 GALLONS
 SURFACE AREA: 37 sq.ft.
 IAPMO#: 1138
 FDA#: 2030305



NESPA ENTERPRISES INC.

2800 Richter Ave. Suite C
 Oroville, CA 95966
 Office: (530) 534-9910 Fax: (530) 534-9915
 E-Mail: sales@tiledspas.com www.tiledspas.com

IMPERIA TYP

WILLOW 2

ALL DIMENSIONS SUBJECT TO 1/4" TOLERANCES


SCALE: 1/2" = 1'-0"

DATE: 06/21/05

JOB: SAN YSIDRO #7


DR#:

SKID SUPPORT STRUCTURE* BONDED TO SPA




*SKIDS SUPPLIED BY NESPA

LIGHT NICH

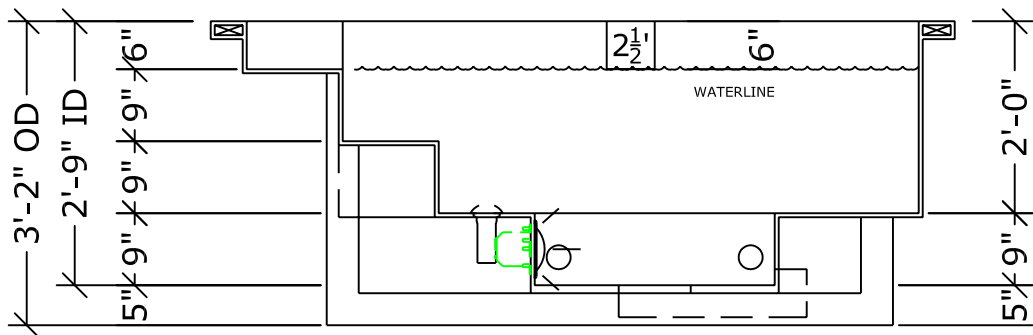
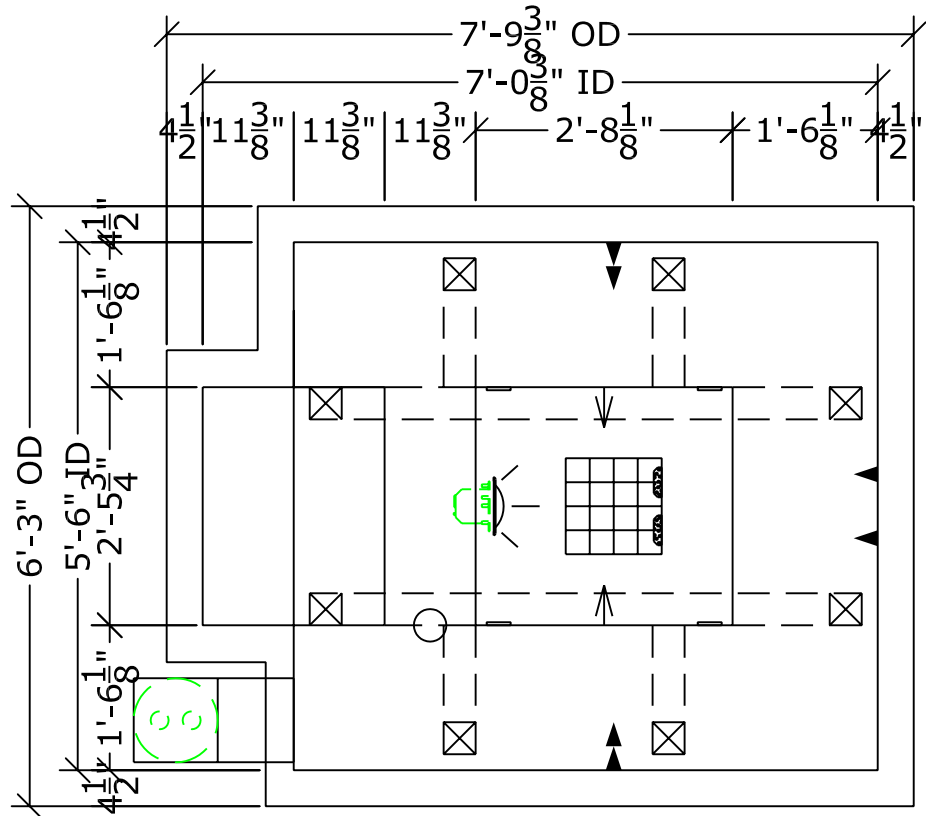


HAYWARD SKIMMER NSF APPROVED



SPECIFICATIONS

DRY WEIGHT: 1050 lbs.
 WET WEIGHT: 4120 lbs.
 WATER: 410 GALLONS
 SURFACE AREA: 35 sq.ft.
 IAPMO#: 1138
 FDA#: 2030305



NESPA ENTERPRISES INC.

2800 Richter Ave. Suite C

Oroville, CA 95966

Office: (530) 534-9910 Fax: (530) 534-9915

E-Mail: sales@tiledspas.com www.tiledspas.com

WILLOW TREE

SPA DETAIL

SCALE: 1/2" = 1'-0"

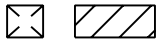
DATE: 06/21/05

JOB: SAN YSIDRO #8

DR#:

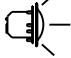
ALL DIMENSIONS SUBJECT TO 1/4" TOLERANCES

SKID SUPPORT STRUCTURE* BONDED TO SPA

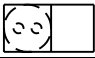


*SKIDS SUPPLIED BY NESPA

LIGHT NICH



HAYWARD SKIMMER NSF APPROVED

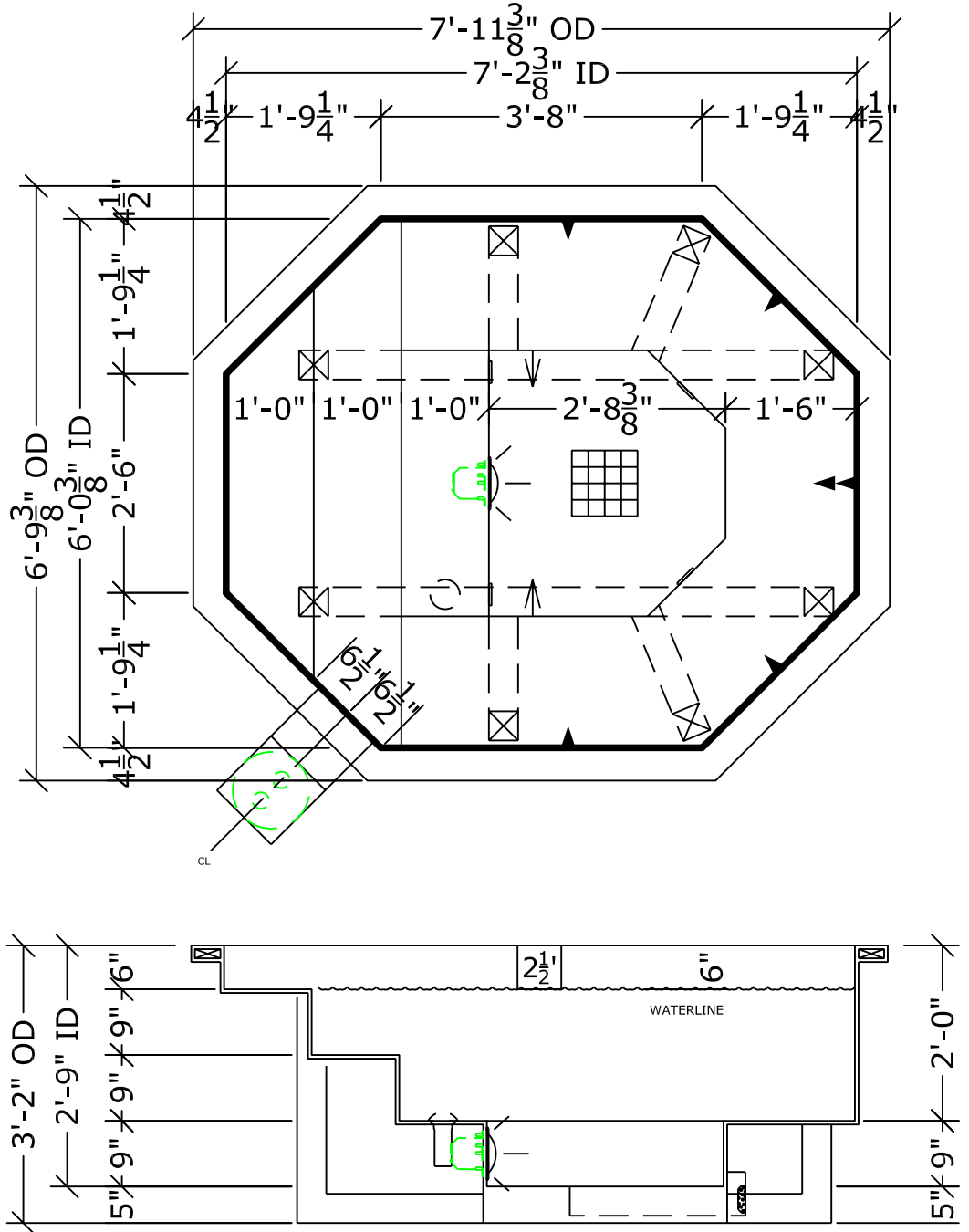


SPECIFICATIONS

DRY WEIGHT: 1050 lbs.
 WET WEIGHT: 4450 lbs.
 WATER: 410 GALLONS
 SURFACE AREA: 37 sq.ft.
 IAPMO#: 1138
 FDA#: 2030305

NOTE:

IN LAST FAX, SKIMMER WAS LOCATED ABOVE THE FIRST STEP, THAT CANT BE DONE, THE FIRST STEP IS 6.5" AND THE SKIMMER NEEDS 7.5"



NESPA ENTERPRISES INC.

2800 Richter Ave. Suite C
Oroville, CA 95966

Office: (530) 534-9910 Fax: (530) 534-9915
E-Mail: sales@tiledspas.com www.tiledspas.com

OAK GROVE SOUTH

SPA DETAIL

ALL DIMENSIONS SUBJECT TO 1/4" TOLERANCES

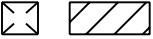
SCALE: 1/2" = 1'-0"

DATE: 06/21/05

JOB: SAN YSIDRO #10

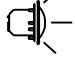
DR#:

SKID SUPPORT STRUCTURE* BONDED TO SPA

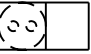


*SKIDS SUPPLIED BY NESPA

LIGHT NICH



HAYWARD SKIMMER NSF APPROVED

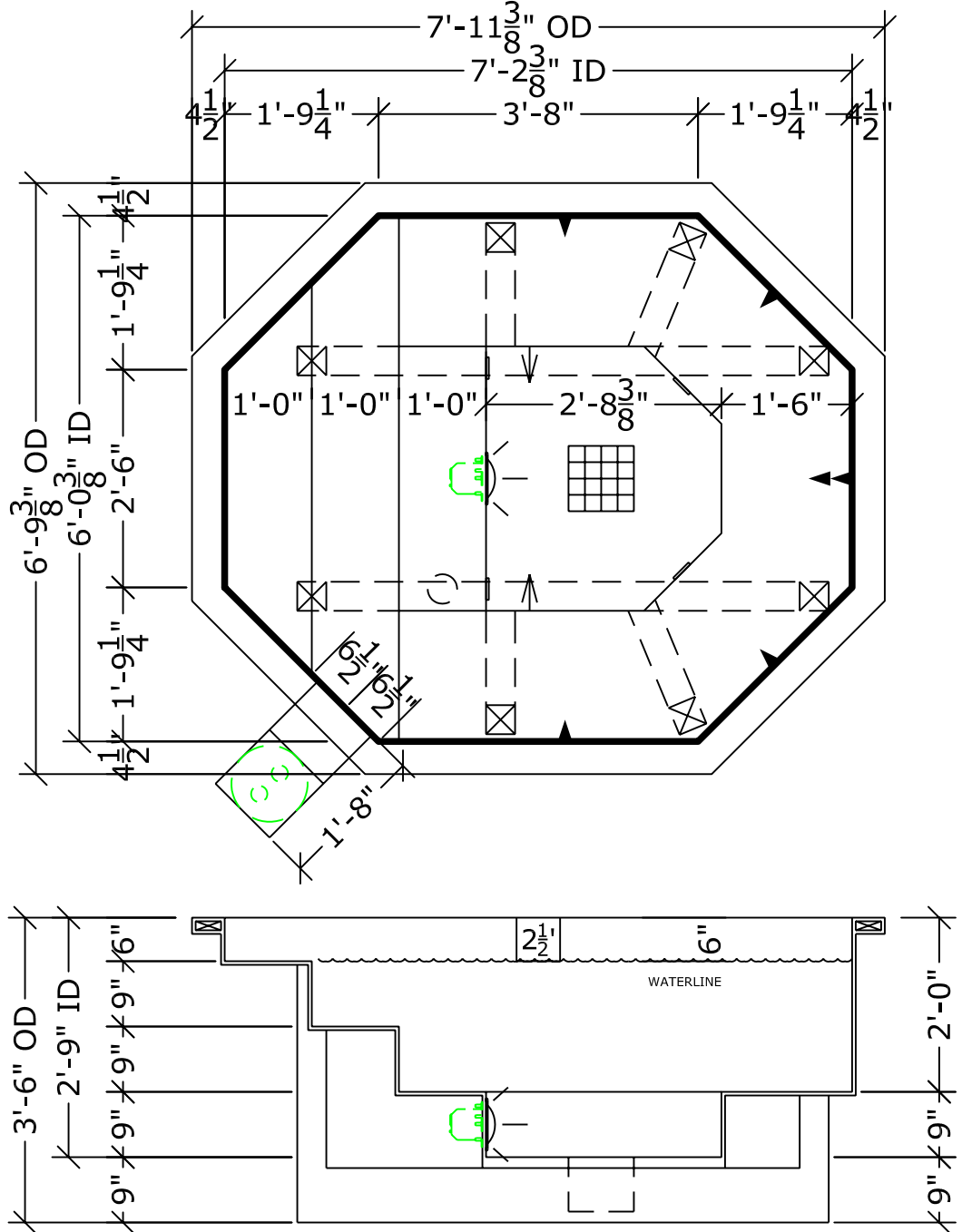


SPECIFICATIONS

DRY WEIGHT: 1050 lbs.
WET WEIGHT: 4450 lbs.
WATER: 410 GALLONS
SURFACE AREA: 37 sq.ft.
IAPMO#: 1138
FDA#: 2030305

NOTE:

IN LAST FAX, THERE WAS NO REFERENCE TO THIS SPA



NESPA ENTERPRISES INC.

2800 Richter Ave. Suite C
 Oroville, CA 95966
 Office: (530) 534-9910 Fax: (530) 534-9915
 E-Mail: sales@tiledspas.com www.tiledspas.com

TERRACE

SPA DETAIL

SCALE: 1/2" = 1'-0"


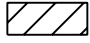
DATE: 06/21/05

JOB: SAN YSIDRO #13

DR#:

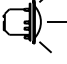
ALL DIMENSIONS SUBJECT TO 1/4" TOLERANCES

SKID SUPPORT STRUCTURE* BONDED TO SPA

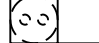



*SKIDS SUPPLIED BY NESPA

LIGHT NICH

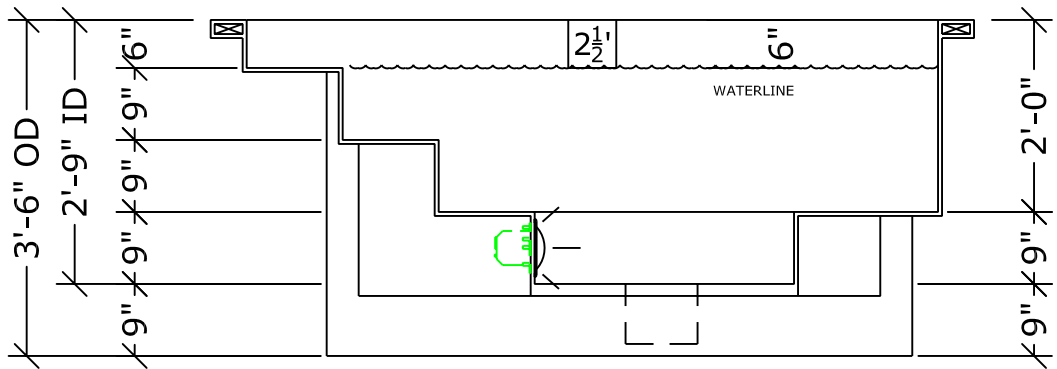
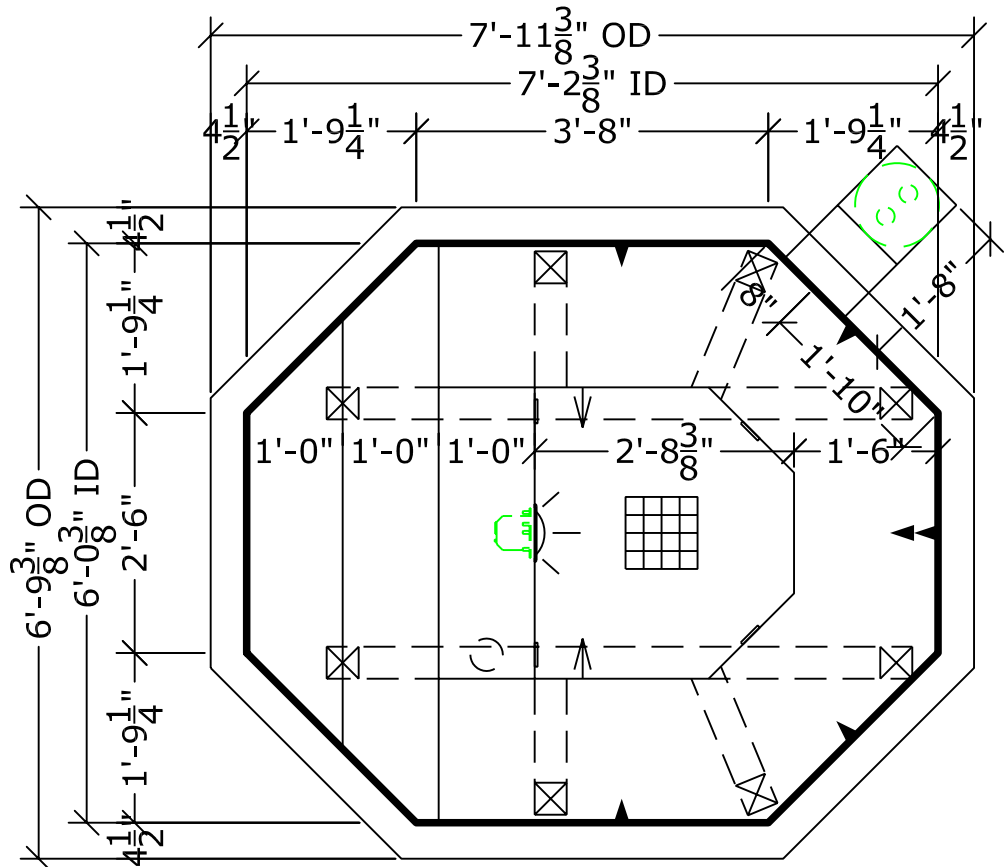


HAYWARD SKIMMER NSF APPROVED



SPECIFICATIONS

DRY WEIGHT: 1050 lbs.
 WET WEIGHT: 4450 lbs.
 WATER: 410 GALLONS
 SURFACE AREA: 37 sq.ft.
 IAPMO#: 1138
 FDA#: 2030305



NESPA ENTERPRISES INC.

2800 Richter Ave. Suite C

Oroville, CA 95966

Office: (530) 534-9910 Fax: (530) 534-9915

E-Mail: sales@tiledspas.com www.tiledspas.com

IMPERIA TYP

TANGERINE

SCALE: 1/2" = 1'-0"

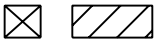
DATE: 06/21/05

JOB: SAN YSIDRO #15

DR#:


ALL DIMENSIONS SUBJECT TO 1/4" TOLERANCES

SKID SUPPORT STRUCTURE* BONDED TO SPA

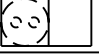


*SKIDS SUPPLIED BY NESPA

LIGHT NICH

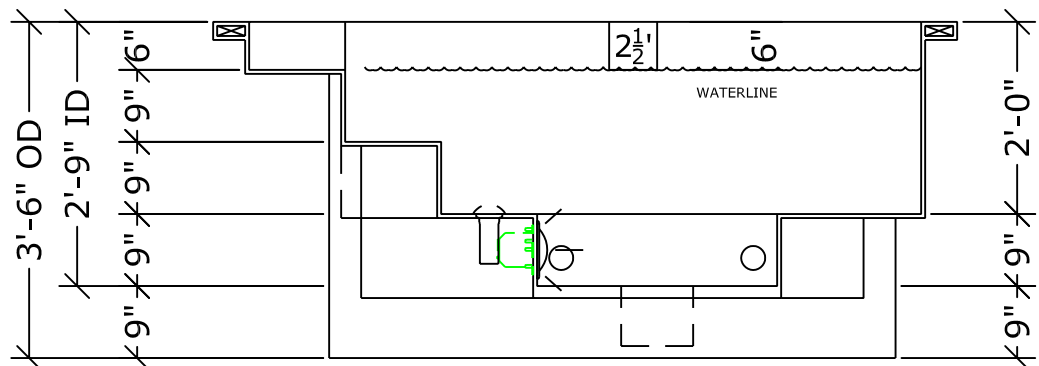
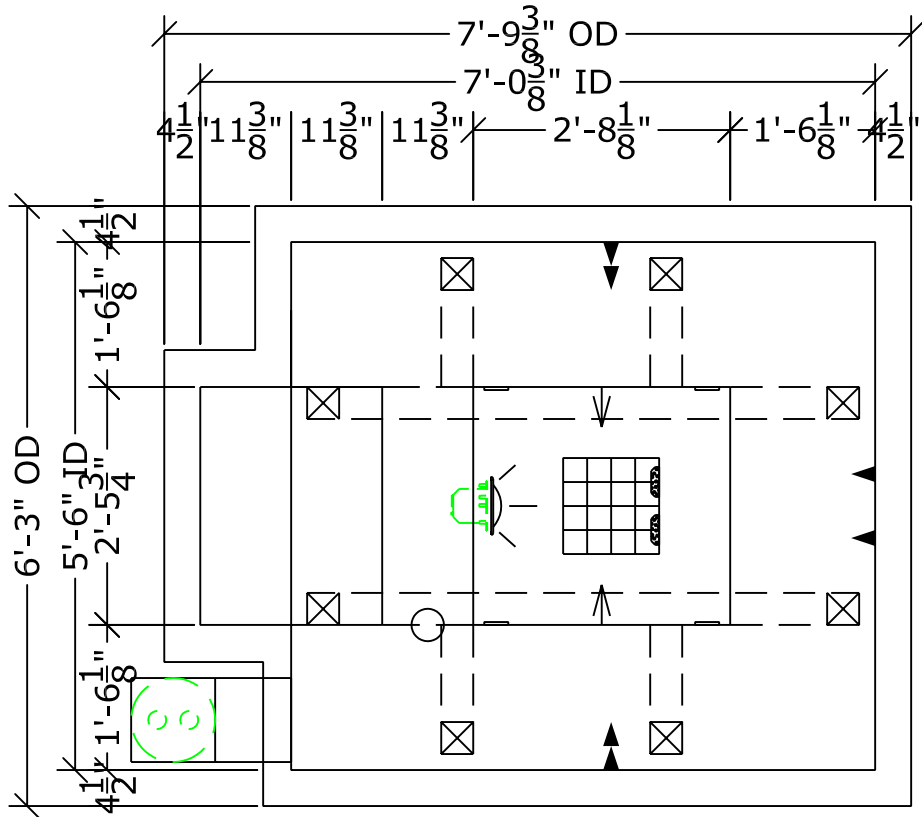


HAYWARD SKIMMER NSF APPROVED



SPECIFICATIONS

DRY WEIGHT: 1050 lbs.
 WET WEIGHT: 4120 lbs.
 WATER: 410 GALLONS
 SURFACE AREA: 35 sq.ft.
 IAPMO#: 1138
 FDA#: 2030305



NESPA ENTERPRISES INC.

2800 Richter Ave. Suite C

Oroville, CA 95966

Office: (530) 534-9910 Fax: (530) 534-9915

E-Mail: sales@tiledspas.com www.tiledspas.com

IMPERIA TYP

WEST ORANGE

ALL DIMENSIONS SUBJECT TO 1/4" TOLERANCES

SCALE: 1/2" = 1'-0"

DATE: 06/21/05

JOB: SAN YSIDRO #16

DR#:

SKID SUPPORT STRUCTURE* BONDED TO SPA

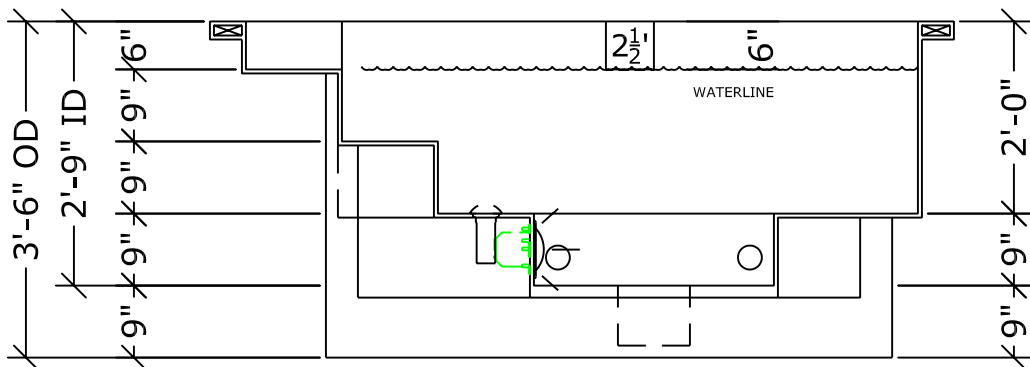
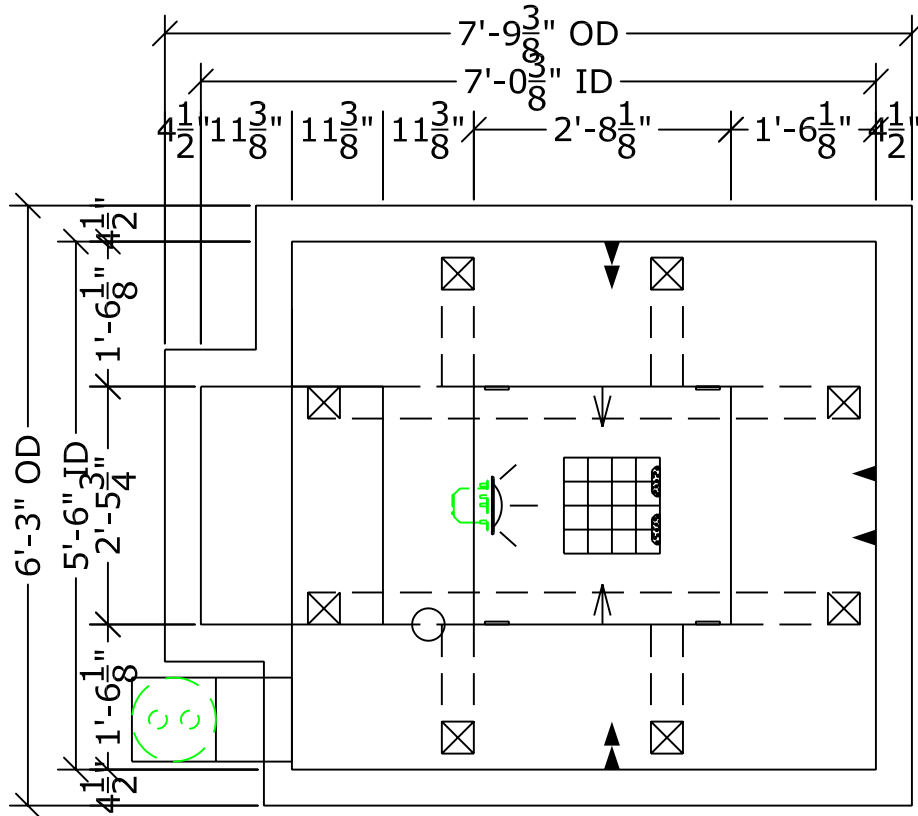
*SKIDS SUPPLIED BY NESPA

LIGHT NICH

HAYWARD SKIMMER NSF APPROVED

SPECIFICATIONS

DRY WEIGHT: 1050 lbs.
 WET WEIGHT: 4120 lbs.
 WATER: 410 GALLONS
 SURFACE AREA: 35 sq.ft.
 IAPMO#: 1138
 FDA#: 2030305



NESPA ENTERPRISES INC.

2800 Richter Ave. Suite C

Oroville, CA 95966

Office: (530) 534-9910 Fax: (530) 534-9915

E-Mail: sales@tiledspas.com www.tiledspas.com

IMPERIA TYP

EAST ORANGE

ALL DIMENSIONS SUBJECT TO 1/4" TOLERANCES

SCALE: 1/2" = 1'-0"

DATE: 06/24/05

JOB: SAN YSIDRO #17

DR#:

